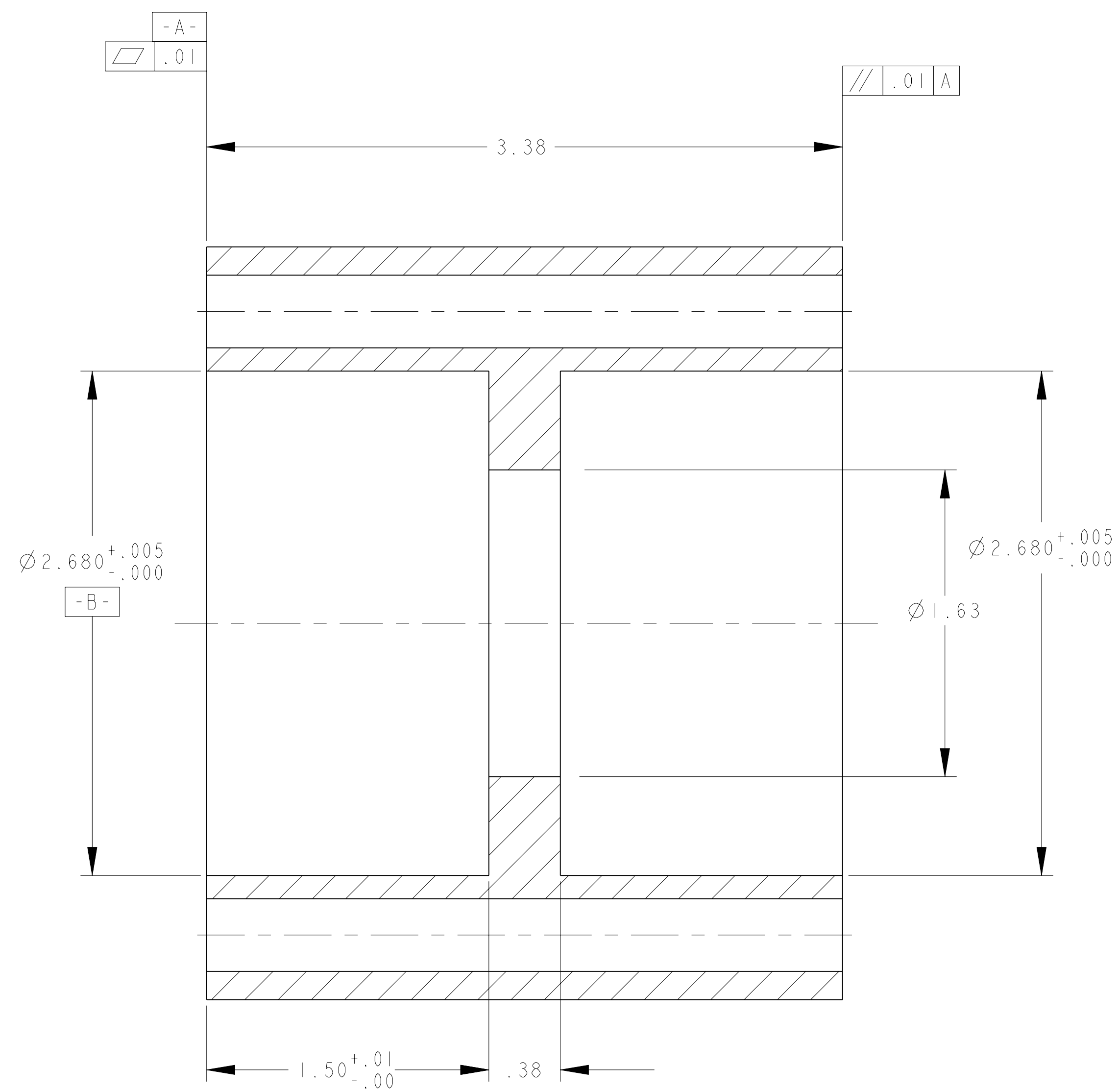
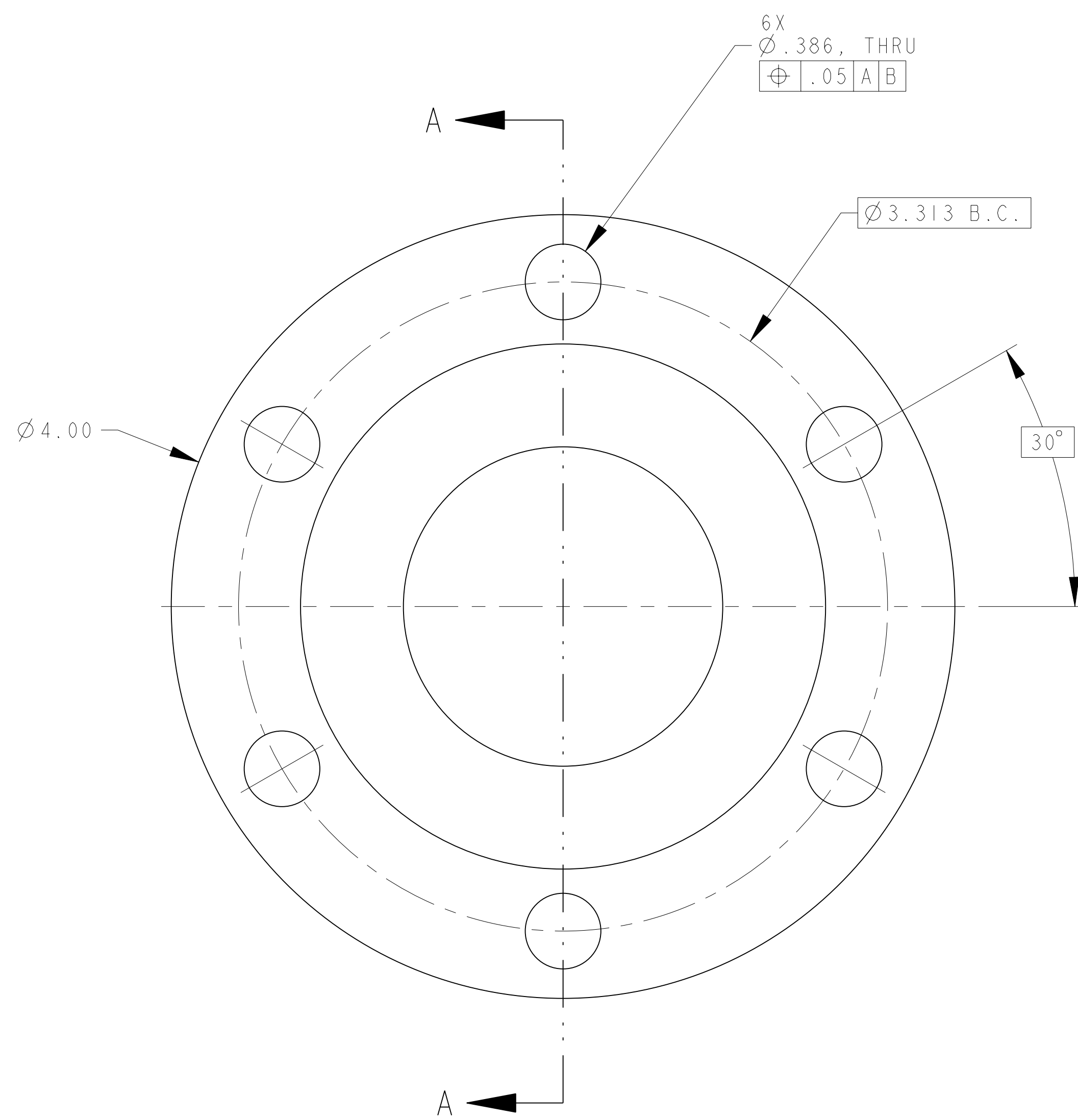


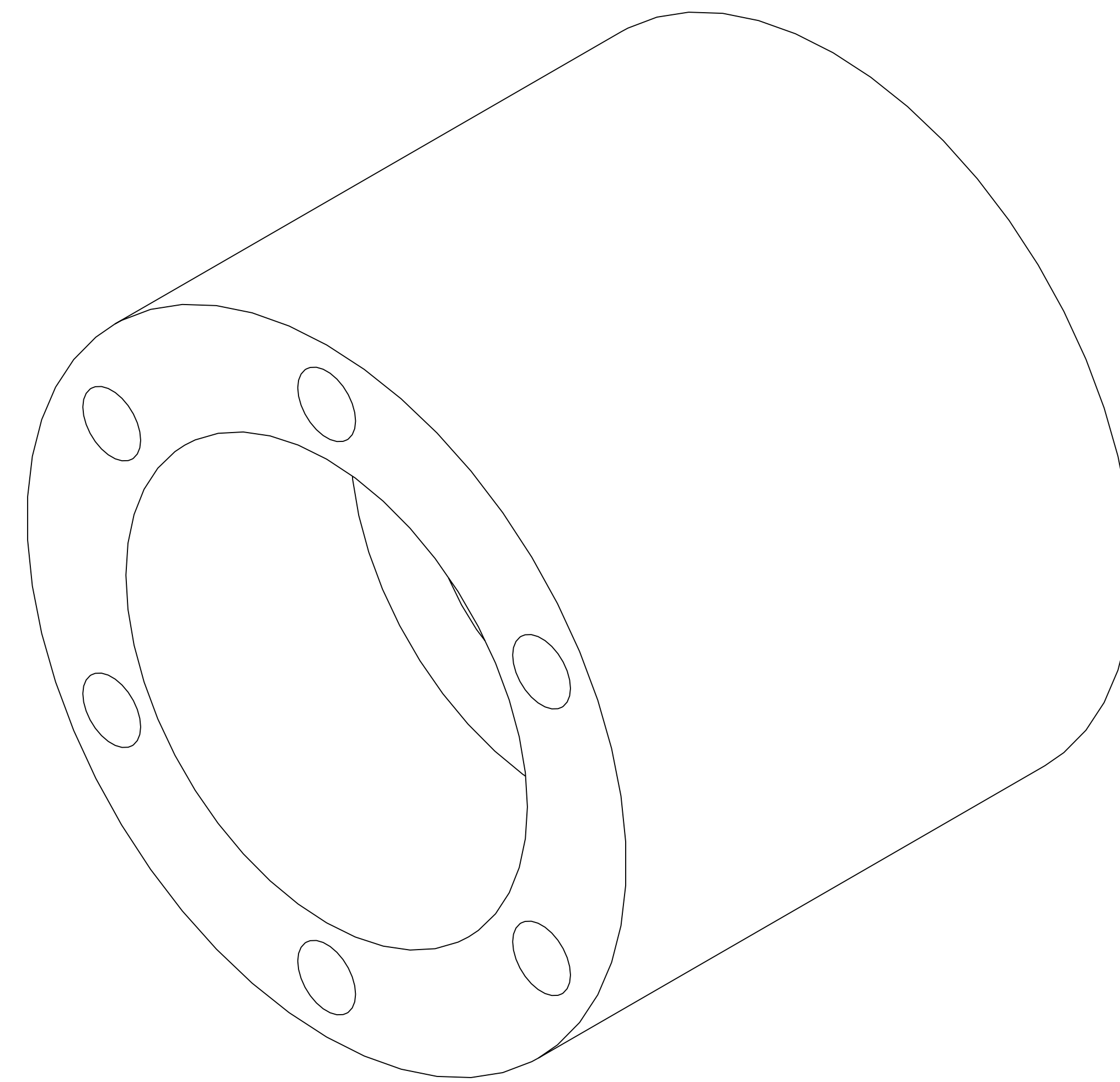
NEXT ASS'Y: **1** FINAL ASS'Y:

NOTES:

1. INTERPRET DIMENSIONS AND TOLERANCES PER ANSI Y14.5M
2. DIMENSIONS ARE IN INCHES
3. DIMENSIONS APPLY AT TEMPERATURE OF 20-30°C (68-86°F)
4. DRAWING DEPICTS FINAL MACHINED STATE OF PART DEFINED BY
PRO/ENGINEER FILE SE124-035.PRT
5. APPROXIMATE WEIGHT= 6.49 lbs.



SECTION A-A

ISOMETRIC VIEW

SCALE: 2.00

next assy	AR	-	VERTICAL LOWER SUPPORT INSERT	316L SST	ASTM A479	I
	CAGE CODE	PART OR IDENTIFYING NO	NOMENCLATURE OR DESCRIPTION	MATERIAL	SPECIFICATION	FIND NO


NEXT ASSEMBLY
PARTS LIST

												SCALE NOTED TOLERANCES UNLESS OTHERWISE SPECIFIED		DES PAUL MILLER 08-17-04 DRW PAUL MILLER 08-17-04 CHR J. M. RAY 04-07-05		Oak Ridge National Laboratory managed for the DEPARTMENT OF ENERGY under U.S. GOVERNMENT contract DE-AC05-00OR21725 UT-BATTELLE, Tennessee	
												FRACTIONS XX DECIMALS ±.01 XXX DECIMALS ±.005 ANGLES ±0°15' BREAK SHARP EDGES .06 MAX FINISH .125 UNLESS OTHERWISE SPECIFIED		PROJECT NAME NATIONAL COMPACT STELLARATOR EXPERIMENT VERTICAL LOWER SUPPORT INSERT DETAIL		VERSION NO. 15 PLANT X-10 BLDG 5700 FL 3 SHT 1 I 1 TYPE S CLASS U	
0 ORIGINAL ISSUE GHJ 3/3/05 REV DESCRIPTION BY DATE CHK DEPT DATE PE REQ DATE ORNL DOE DATE REVISION OR ISSUE PURPOSE REVISION APPROVAL												DRAWING APPROVALS DATE		RELEASE LEVEL WIP		SE124-035 REV 0	

NO REPRESENTATION OR WARRANTY, EXPRESSED OR IMPLIED, IS MADE AS TO THE ACCURACY, COMPLETENESS OR USEFULNESS OF THE INFORMATION OR STATEMENTS CONTAINED IN THESE DRAWINGS, OR THE INFORMATION OR DISCLOSURE OF ANY INFORMATION, APPARATUS, METHOD OR PROCESS DISCLOSED IN THESE DRAWINGS MAY NOT INFRINGE PRIVATE RIGHTS OF OTHERS. NO LIABILITY IS ASSUMED WITH RESPECT TO THE USE OF, OR FOR DAMAGES RESULTING FROM THE USE OF, ANY INFORMATION, APPARATUS, METHOD OR PROCESS DISCLOSED IN THESE DRAWINGS. DRAWINGS MADE AVAILABLE FOR INFORMATION TO BIDDER ARE NOT TO BE USED FOR OTHER PURPOSES, AND ARE TO BE RETURNED UPON REQUEST OF THE FORWARDING CONTRACTOR.

P THIS DRAWING PRODUCED
ON PRO-ENGINEER