

Major Tool & Machine, Inc.
1458 East 19th Street
Indianapolis, IN 46218-4289

MTM N/C: 21144

Page: 1
Date: 02/12/07
User ID: GRIFFITH

Customer: ENERGY INDUSTRIES OF OHIO

Contact: NANCY HORTON
E-Mail: NKHFlowen@aol.com

Telephone: 216-496-2314
Fax: 216-328-2001

Part: SE141-115 / MODULAR COIL, TYPE B

Drawing ID: SE141-102 Revision: 3
W/O Links: 1-Type:W: 65708/5.0 Sub: 0

Customer P.O.: S005242-F/Ln:5
Serial No./Qty: B5

Reported By: MIKE GRIFFITH
E-Mail: mGriffith@MajorTool.com

Telephone: 317-636-6433
Fax: 317-634-9420

Problem: VARIOUS DEFECTS IDENTIFIED DURING VISUAL REVIEW OF THE CASTING. SEE ATTACHED.

Proposed Disposition:

MTM PROPOSED TO ACCEPT DEVIATIONS AS IS.

Number of additional pages: 8 PAGE ATTACHMENT

Customer Disposition: ☒ **Use As Is** ☐ **Rework** ☐ **Repair** ☐ **Scrap** ☐ **Replace**

The attached groups of visual defects were reviewed during a conference call held on 10 February 2007 attended by D. Williamson, T. Brown, L. Sutton, L. Dudek, J. Chrzanowski, S. Raftopoulos, W. Reiersen, P. Heitzenroeder, and F. Malinowski. All were dispositioned "Use As Is" since all are <0.010" in depth.

Approved by:

Tech. Rep.

RLM

Major Tool Implemented By: _____ **Title:** _____ **Date:** _____

n:\mtmapps\Mtnonc14.qrp

Major Tool and Machine, Inc. 1458 East 19th Street, Indianapolis, IN 46218-4289 Tel: 317-636-6433 Fax: 317-634-9420

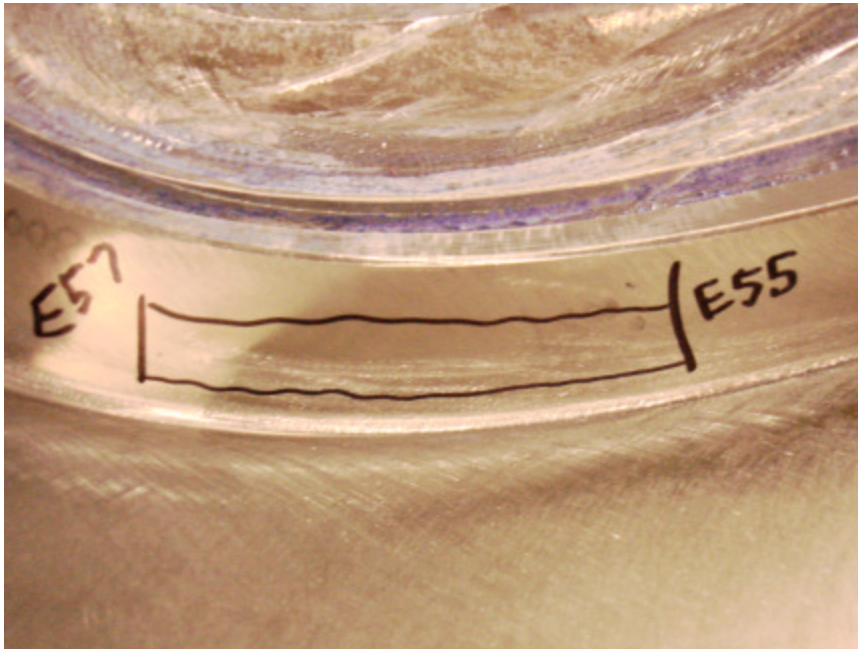
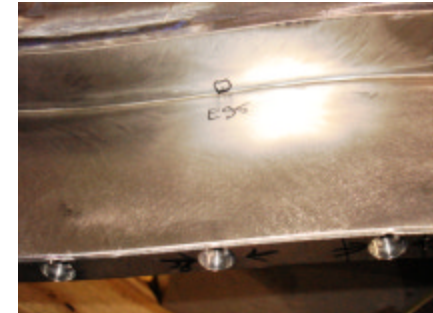


NC21144 – B5 Visual Review

Tool Gouges on Datum E side

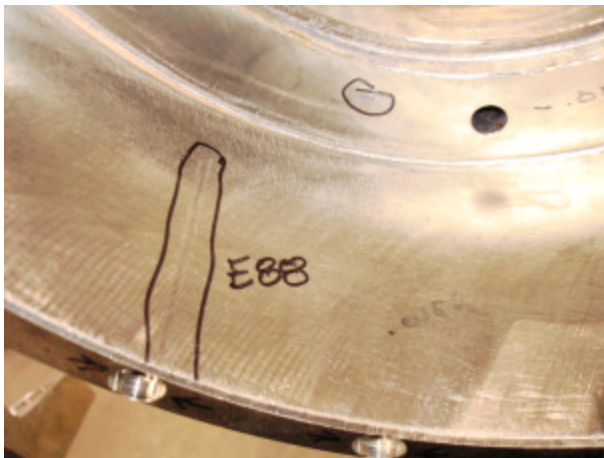


All gouges are no greater than
.010" in depth.





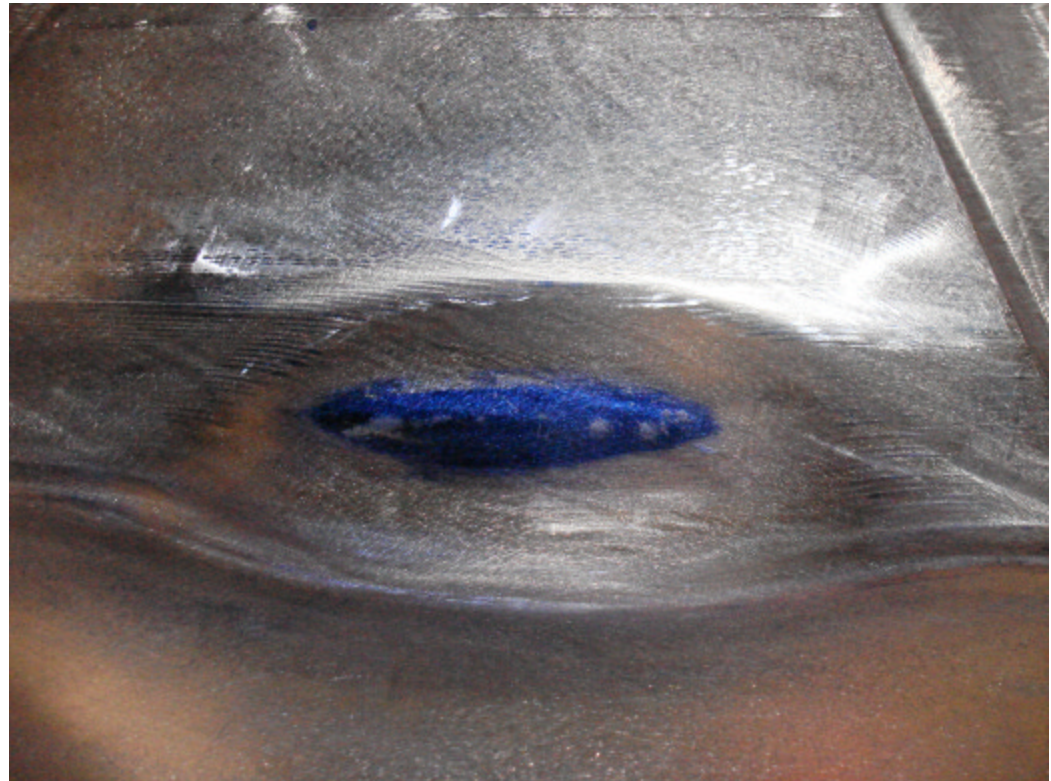
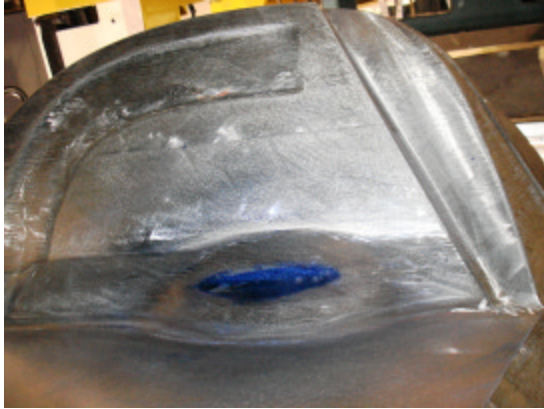
Tool Gouges on Datum E side



All gouges are no greater than
.010" in depth.



Casting Non-cleanup on Datum E side Wing





NC21144 – B5 Visual Review

Tool Gouges on Datum D side

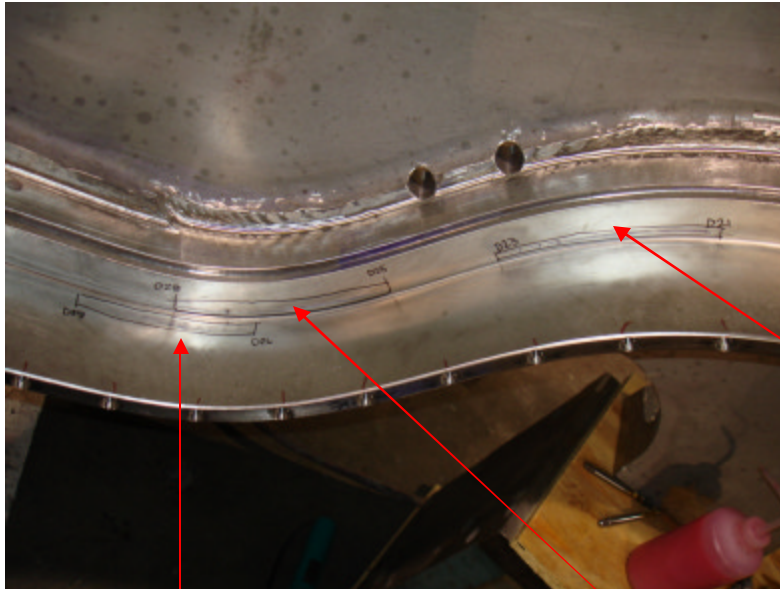


All gouges are no greater than
.010" in depth.

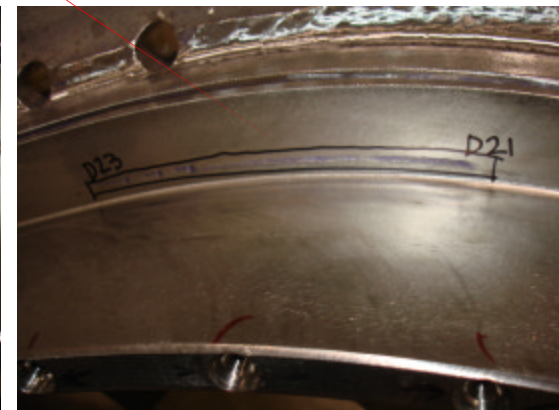
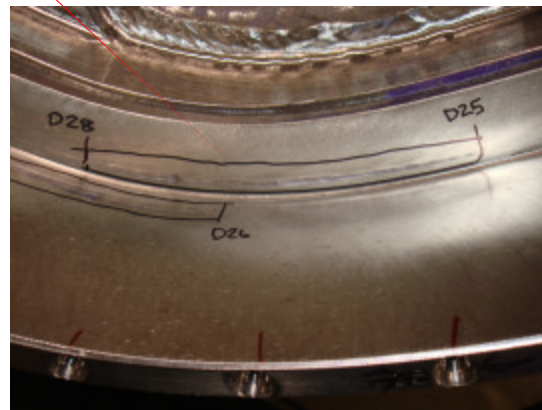
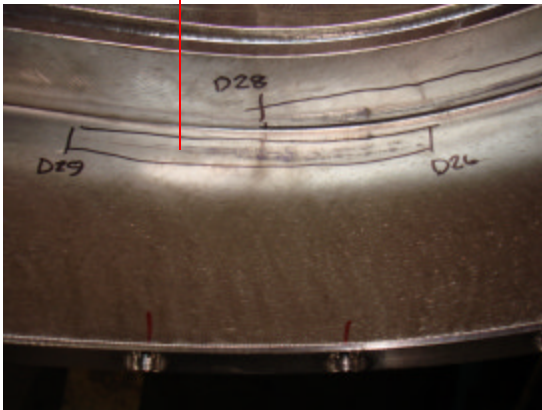




Tool Gouges on Datum D side cont.



All gouges are no greater than
.010" in depth.





NC21144 – B5 Visual Review

Tool Gouges on Datum D side cont.



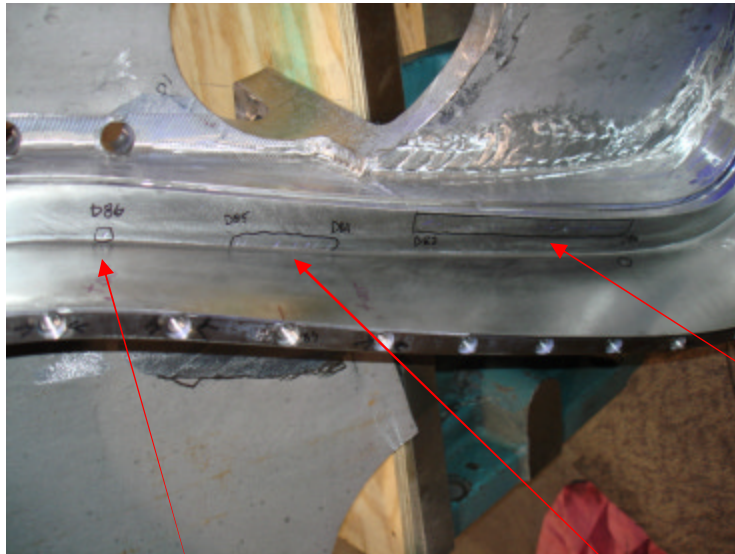
All gouges are no greater than
.010" in depth.



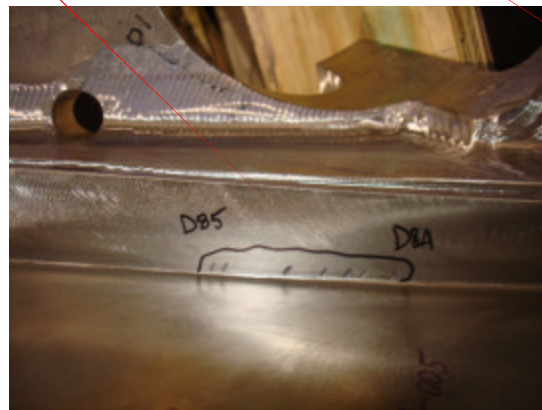


NC21144 – B5 Visual Review

Tool Gouges on Datum D side cont.

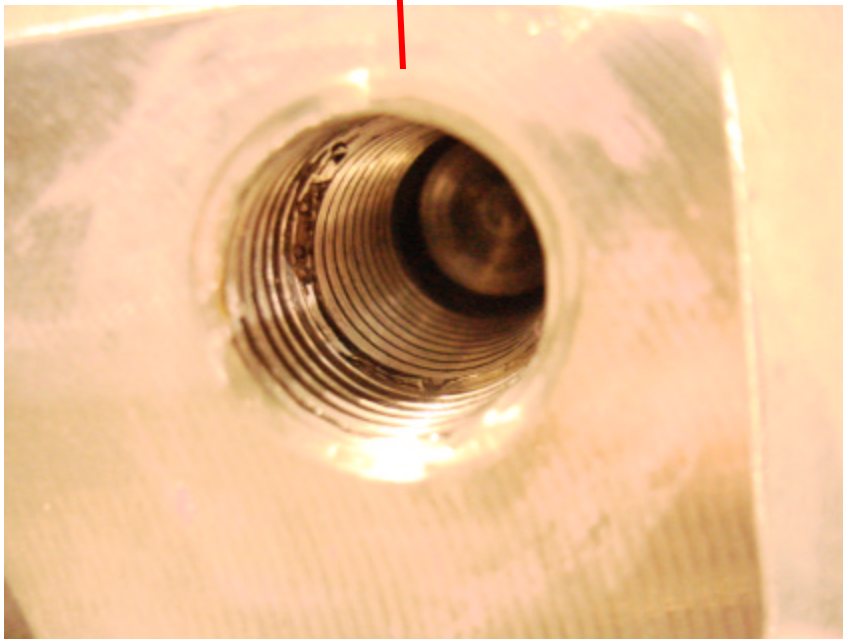
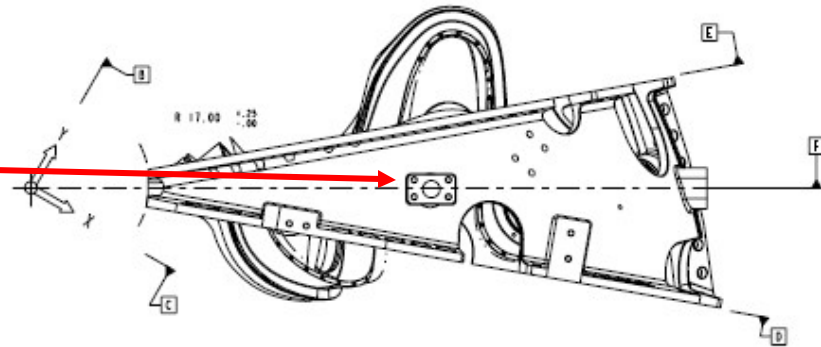
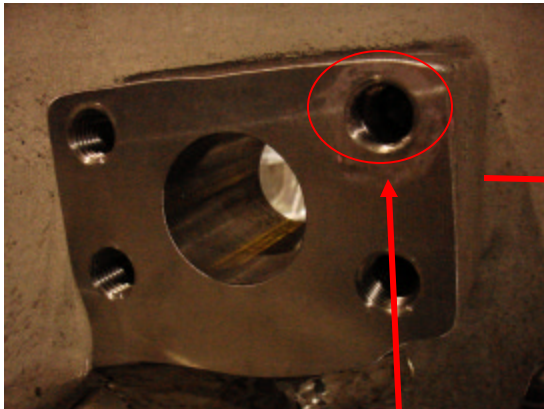


All gouges are no greater than
.010" in depth.





NC21144 – B5 Visual Review



Vacuum Support Pad has damage to one of the 1"-8 tapped holes.

The first .75" of the minor diameter is oversize and has damage. The hole is acceptable using a GO/NOGO thread gage.