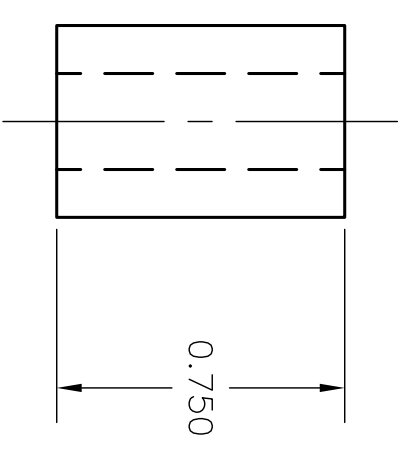
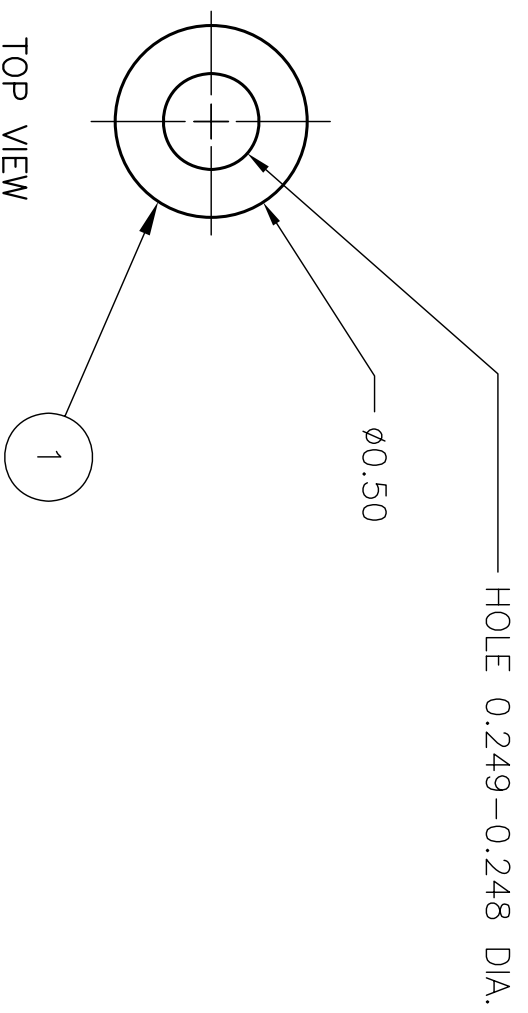


| NO. | REVISION | BY | CH | SUP | APPROVED | DATE |
|-----|----------|----|----|-----|----------|------|
| | | | | | | |



**RELEASED FOR
FABRICATION / INSTALLATION**

PPPL Drafting:

| | | | | | | |
|---|----|----|--|------------------------------------|---------------------------|-------------|
| | | | 1 | TOOLING BALL HOLDER | THIS DWG | INCONEL 625 |
| 03 | 02 | 01 | PART NO. | NOMENCLATURE OR DESCRIPTION | DRAWING NO. | MATERIAL |
| COMPUTER GENERATED DRAWING MANUAL CHANGES NOT PERMITTED | | | CENTRAL FILES: UNLESS OTHERWISE SPECIFIED | | | |
| AutoCAD2000 | | | DIMENSIONS ARE IN INCHES MACHINE SURFACES 12 $\frac{5}{16}$ | | | |
| DO NOT VERIFY INFORMATION BY SCALING DRAWING | | | BREAK SHARP EDGES .005/.020 | | | |
| SCALE: 2-1 | | | TOLERANCES NON-CUMULATIVE | | | |
| NEXT ASSEMBLY | | | DECIMAL-INCH | FRACTIONS | DIV: MECHANICAL | |
| | | | ∅ .100 ±.030 | 0 $^{\circ}$ -12 $^{\circ}$ ±1/16 | DATE: 7/31/07 | |
| | | | .XX ±.005 | 12 $^{\circ}$ -72 $^{\circ}$ ±1/8 | APPROVED STEVE LANGISH | |
| | | | .XXX ±.005 | 72 $^{\circ}$ -120 $^{\circ}$ ±1/4 | CHK: FRANK JONES | |
| | | | ANGULAR ±0 $^{\circ}$ -15 $^{\circ}$ | OVER 120 $^{\circ}$ ±1/2 | CHK: JIM NELSON | |
| | | | PRINCETON PLASMA PHYSICS LABORATORY PRINCETON UNIVERSITY NATIONAL COMPACT STELLARATOR EXPERIMENT TOOLING AND WINDING TOOLING BALL HOLDER | | | |
| | | | CADD FILE: SB142-490.DWG | | | |
| | | | NCSX | | | |
| | | | SB142-490 | | | |
| | | | SHEET OF | | REV 0 | |

WELDING ENGINEER

APPROVED: _____ DATE _____