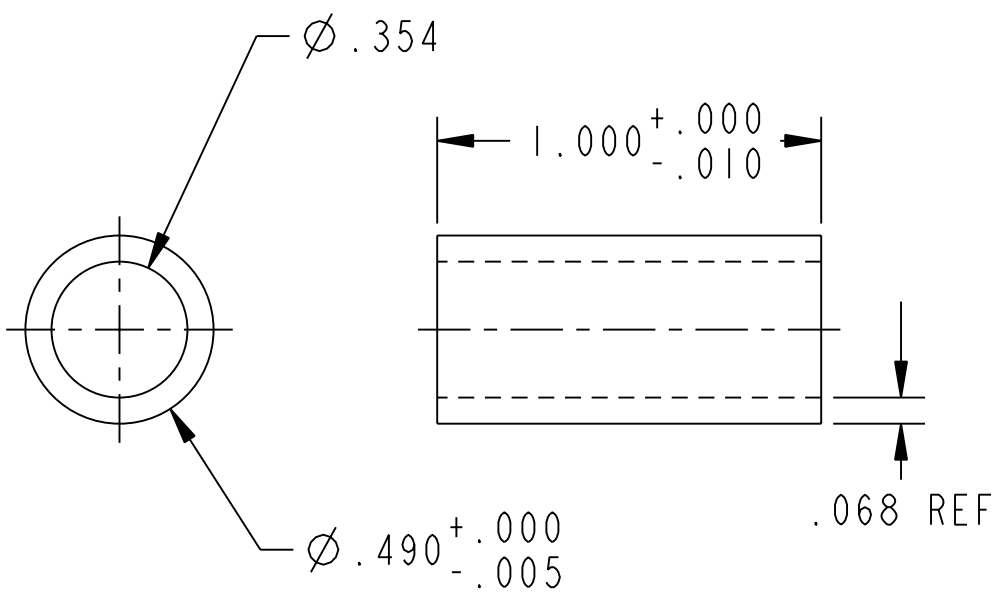
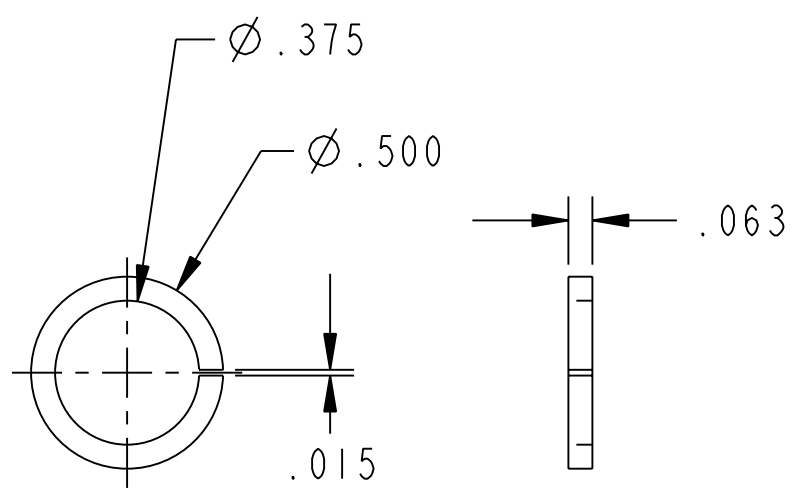


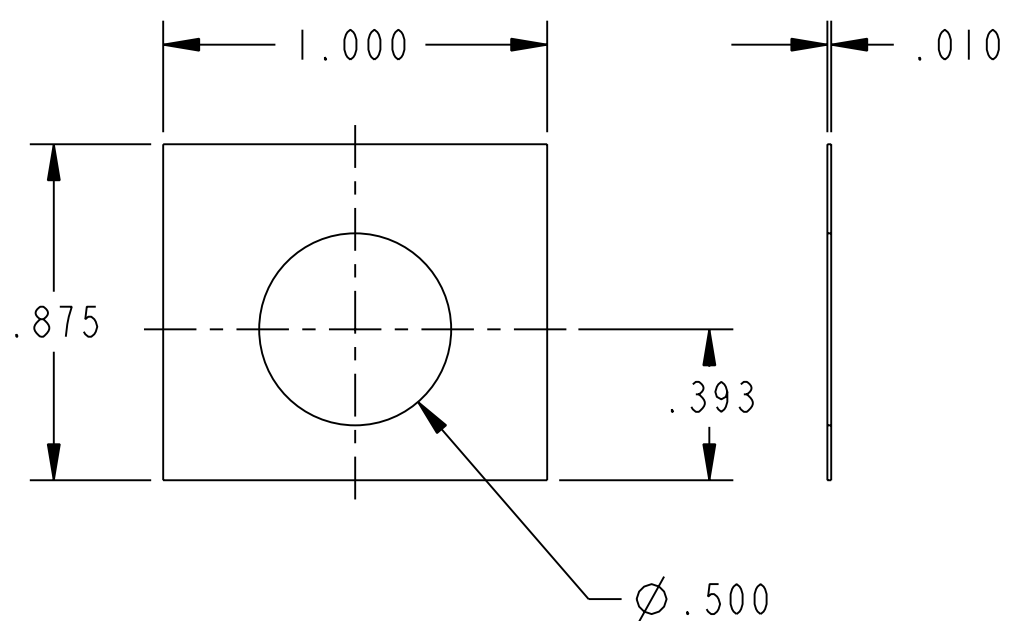
NO.	REVISION	BY	CH	SUP	APPROVED	DATE



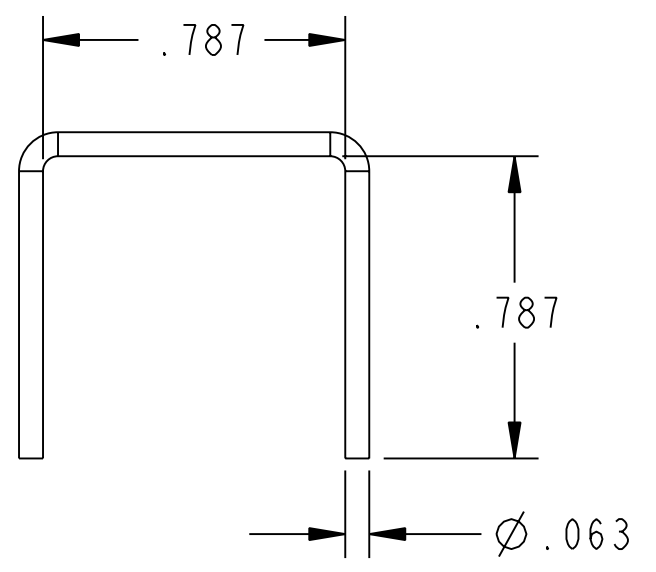
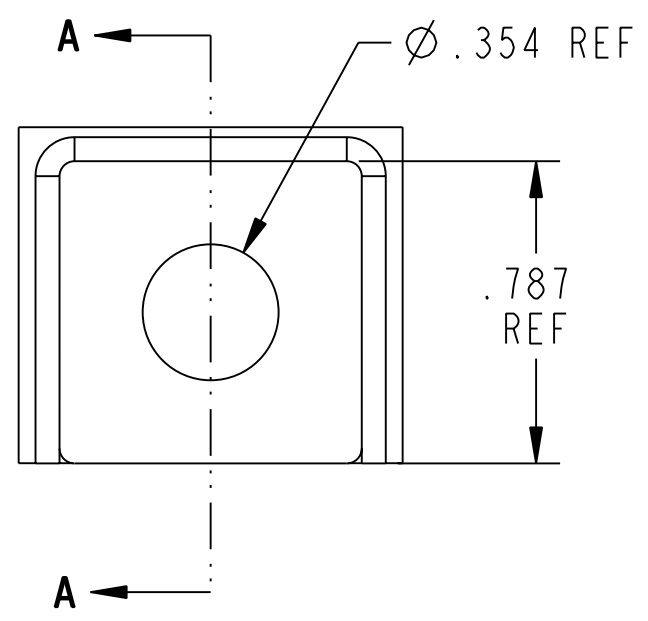
PART 1



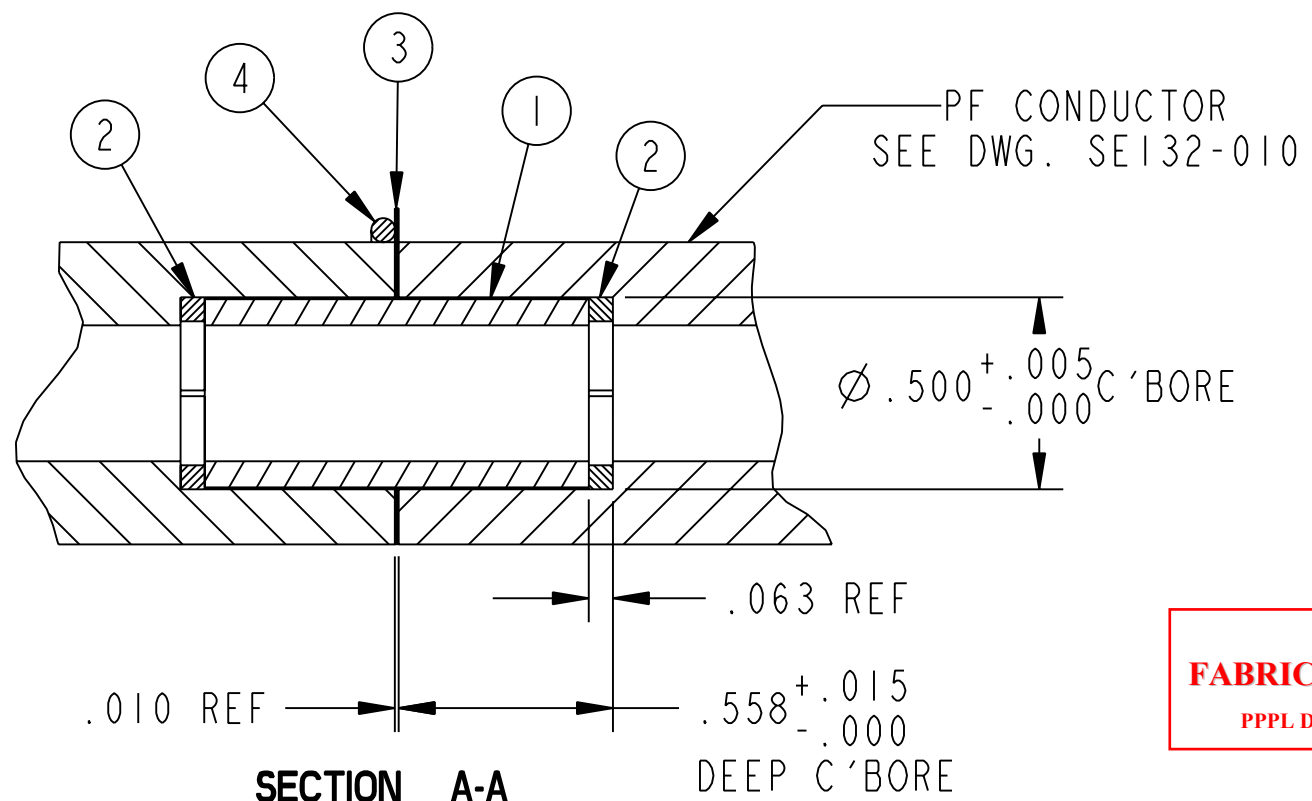
PART 2



PART 3



PART 4



RELEASED FOR FABRICATION / INSTALLATION
 PPPL Drafting

**LONGITUDINAL BRAZE JOINT
PF-4, PF-5 & PF-6 CONDUCTOR**

NOTES:

- SEE SPECIFICATION NCSX-CSPEC-132-02 FOR FURTHER BRAZE INSTRUCTIONS.
- BRAZE JOINTS SHALL BE VISUALLY EXAMINED FOR COMPLETE FILLING OF THE JOINT AND FREEDOM FROM CRACKS.

PART NO.	DRAWING NO.	NOMENCLATURE OR DESCRIPTION	MATERIAL	QTY REQ'D
4	THIS DWG	SILFOS HAIRPIN (SEE DETAIL)	SILFOS	AR
3	THIS DWG	SILFOS WAFER (SEE DETAIL)	SILFOS	AR
2	THIS DWG	SILFOR WASHER (SEE DETAIL)	SILFOS	AR
1	THIS DWG	BRAZE SLEEVE (SEE DETAIL)	BRASS	AR

PARTS LIST

COMPUTER GENERATED DRAWING MANUAL CHANGES NOT PERMITTED	CENTRAL FILES: UNLESS OTHERWISE SPECIFIED		PRINCETON PLASMA PHYSICS LABORATORY PRINCETON UNIVERSITY NATIONAL COMPACT STELLARATOR EXPERIMENT STELLARATOR CORE LONGITUDINAL BRAZE JOINT PF-4, PF-5 & PF-6 CONDUCTOR			
	Pro E	DIMENSIONS ARE IN INCHES MACHINE SURFACES $\sqrt{\checkmark}$				
DO NOT VERIFY INFORMATION BY SCALING DRAWING	BREAK SHARP EDGES .005/.020		TOLERANCES NON-CUMULATIVE			
NEXT ASSEMBLY	DECIMAL - INCH	FRACTIONS	DIV: MECH. ENG.	DATE: 2/12/08	APPROVED	
	.x .100	0"-12" 1/16	ENG: J. CHRZANOWSKI	J. CHRZANOWSKI	SC132-039	
	.xx .030	12"-72" 1/8	DSN: B. PAUL			
	.xxx .005	72"-120" 1/4	CHK: M. KALISH	CHK MK	SUPV JS	SHEET 1 OF 1
	ANGULAR 0°-15'	OVER 120" 1/2				REV 0

RELEASE LEVEL: FABRICATION
DWG VERSION NO: 3

WELDING ENGINEER
APPVD: L. DUDEK DATE 2/12/08