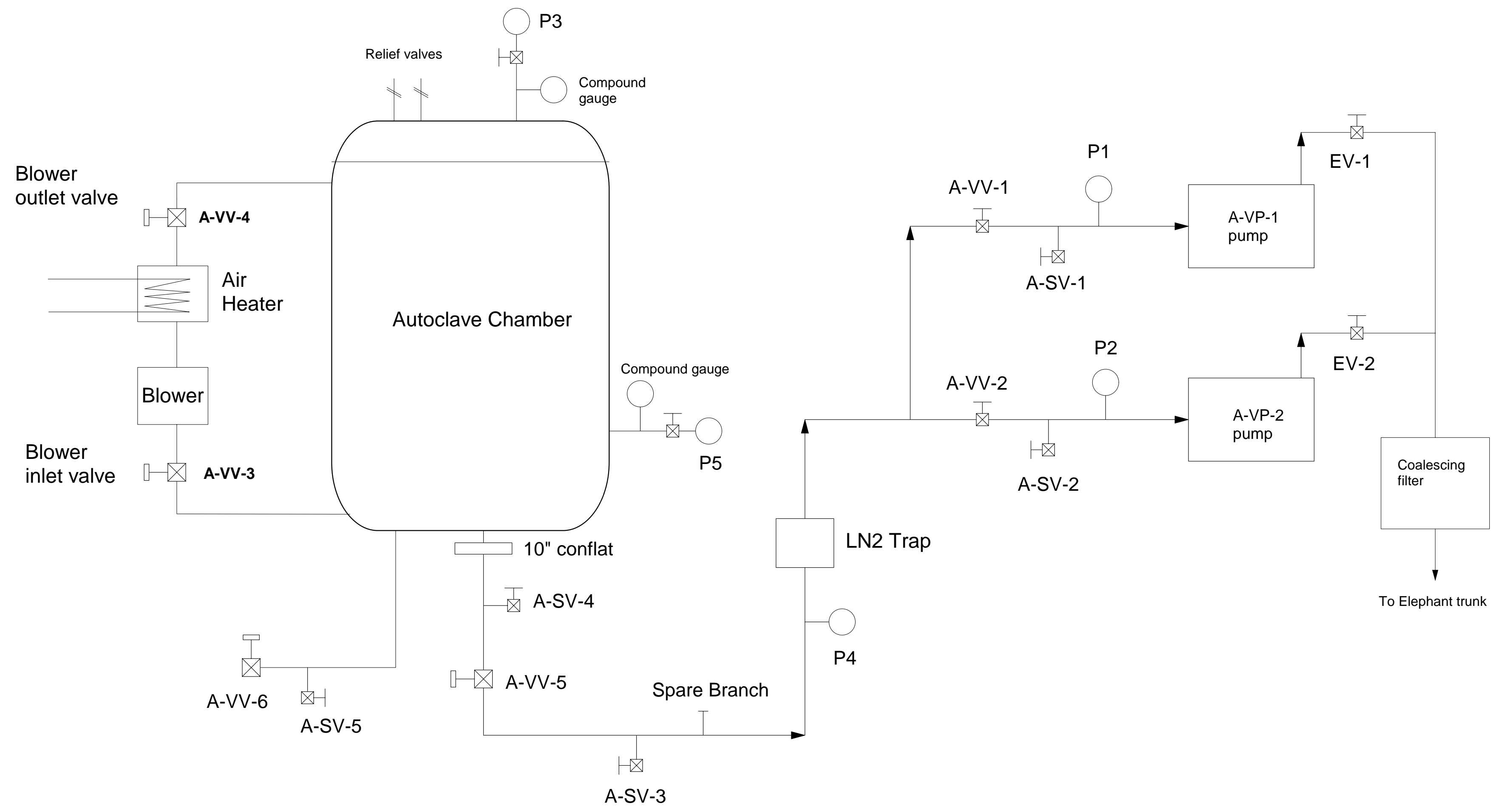


NO.	REVISION	BY	CH	SUP	APPROVED	DATE



**RELEASED FOR
FABRICATION / INSTALLATION**
PPPL Drafting:

03	02	01	PART NO.	NOMENCLATURE OR DESCRIPTION	DRAWING NO.	MATERIAL										
COMPUTER GENERATED DRAWING MANUAL CHANGES NOT PERMITTED			CENTRAL FILES: UNLESS OTHERWISE SPECIFIED		PRINCETON PLASMA PHYSICS LABORATORY National Compact Stellerator Experiment Modular Coil Autoclave Vacuum P&ID											
PERSONAL DESIGNER			DIMENSIONS ARE IN INCHES MACHINE SURFACES $\frac{125}{\checkmark}$													
DO NOT VERIFY INFORMATION BY SCALING DRAWING			BREAK SHARP EDGES .005/.020													
SCALE = N/A			TOLERANCES NON-CUMULATIVE		DIV: NCSX	DATE: 9/01/04										
NEXT ASSEMBLY			<table border="1" style="font-size: small;"> <thead> <tr> <th>DECIMAL-INCH</th> <th>FRACTIONS</th> </tr> </thead> <tbody> <tr> <td>.X .100</td> <td>0'-12" 1/16</td> </tr> <tr> <td>.XX .030</td> <td>12"-72" 1/8</td> </tr> <tr> <td>.XXX .005</td> <td>72"-120" 1/4</td> </tr> <tr> <td>ANGULAR 0°-15'</td> <td>OVER 120° 1/2</td> </tr> </tbody> </table>		DECIMAL-INCH	FRACTIONS	.X .100	0'-12" 1/16	.XX .030	12"-72" 1/8	.XXX .005	72"-120" 1/4	ANGULAR 0°-15'	OVER 120° 1/2	ENG: S. Raftopoulos DWN: S. Raftopoulos CHK: J. Chrzanowski	CADD FILE: OSC144400.mcd APPROVED _____ SHEET 1 OF 1
DECIMAL-INCH	FRACTIONS															
.X .100	0'-12" 1/16															
.XX .030	12"-72" 1/8															
.XXX .005	72"-120" 1/4															
ANGULAR 0°-15'	OVER 120° 1/2															
						SC144-400										
						REV 0										