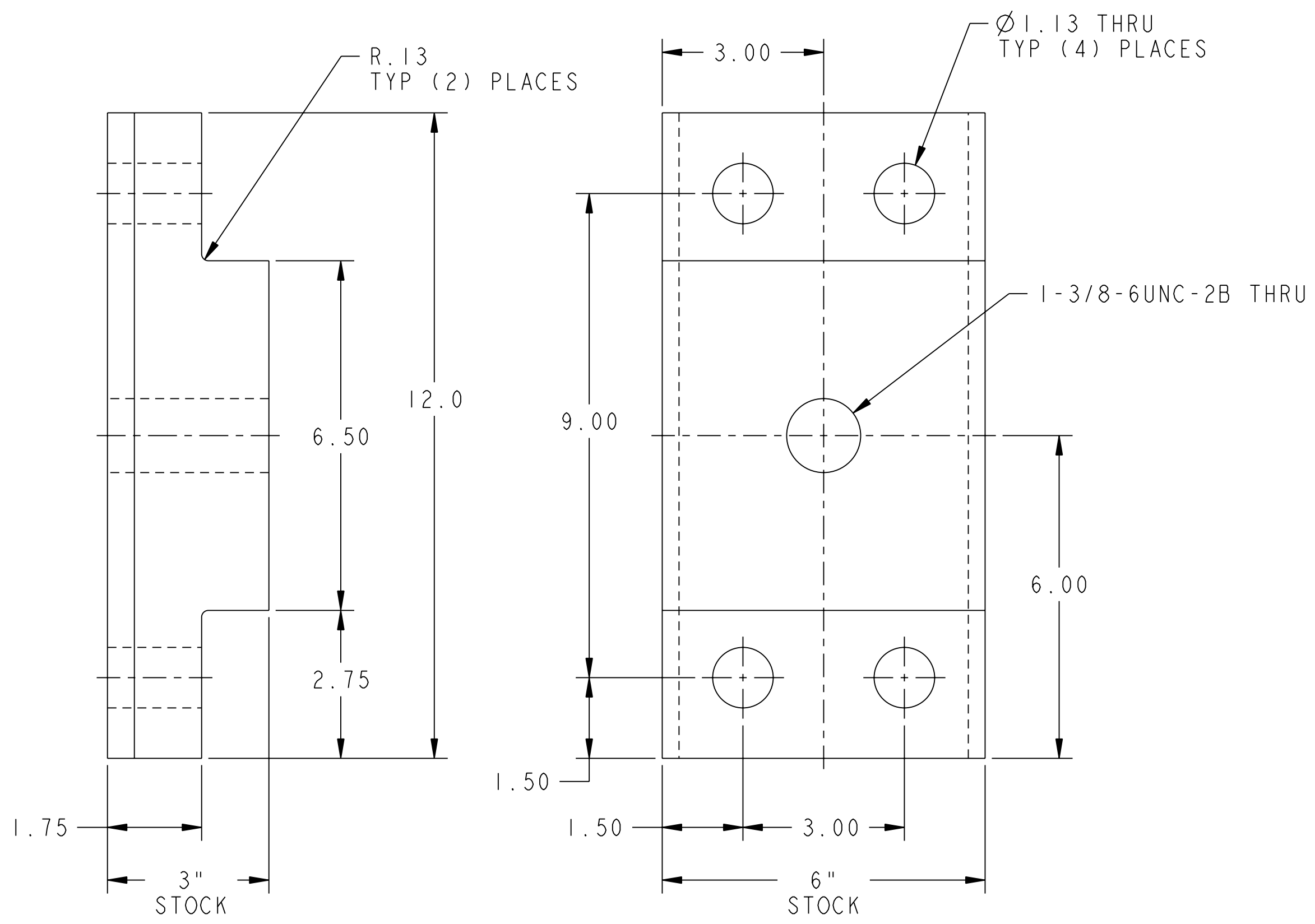
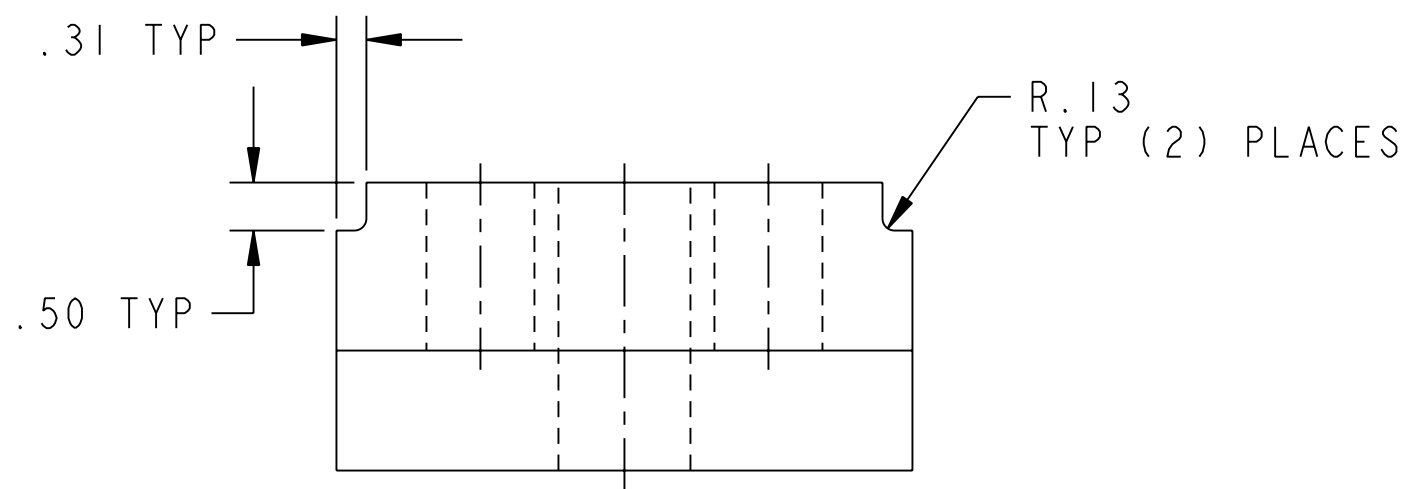


NO.	REVISION	BY	CH	SUP	APPROVED	DATE



RELEASED FOR FABRICATION / INSTALLATION  
PPPL Drafting

1	THIS DWG	STATION 2 HALF PERIOD LIFTING BLOCK	ASTM A36	2
PART NO.	DRAWING NO.	NOMENCLATURE OR DESCRIPTION	MATERIAL	QTY REQD

**PARTS LIST**

COMPUTER GENERATED DRAWING MANUAL CHANGES NOT PERMITTED	CENTRAL FILES:	PRINCETON PLASMA PHYSICS LABORATORY PRINCETON UNIVERSITY <b>NATIONAL COMPACT STELLARATOR EXPERIMENT</b> TOOLING DESIGN AND FABRICATION STATION 2 STATION 2 HALF PERIOD LIFTING BLOCK - TYPE "B" BOSS		
	UNLESS OTHERWISE SPECIFIED			
Pro E	DIMENSIONS ARE IN INCHES MACHINE SURFACES $\sqrt{}$			
DO NOT VERIFY INFORMATION BY SCALING DRAWING	BREAK SHARP EDGES .005/.020	STATION 2 HALF PERIOD LIFTING BLOCK - TYPE "B" BOSS		
	TOLERANCES NON-CUMULATIVE	DIV: MECH. ENG.	DATE: 1-22-2008	
		ENG: T. BROWN	APPROVED	
		DSN: L. MORRIS	T. BROWN	<b>SC186-201</b>
		CHK: M. VIOLA	CHK MV SUPV JS	SHEET 1 OF 1 REV 0

WEIGHT: 3.86 LBS

WELDING ENGINEER

APPVD: \_\_\_\_\_ DATE

**RELEASE LEVEL: Fabrication**

**DWG VERSION NO: 3**