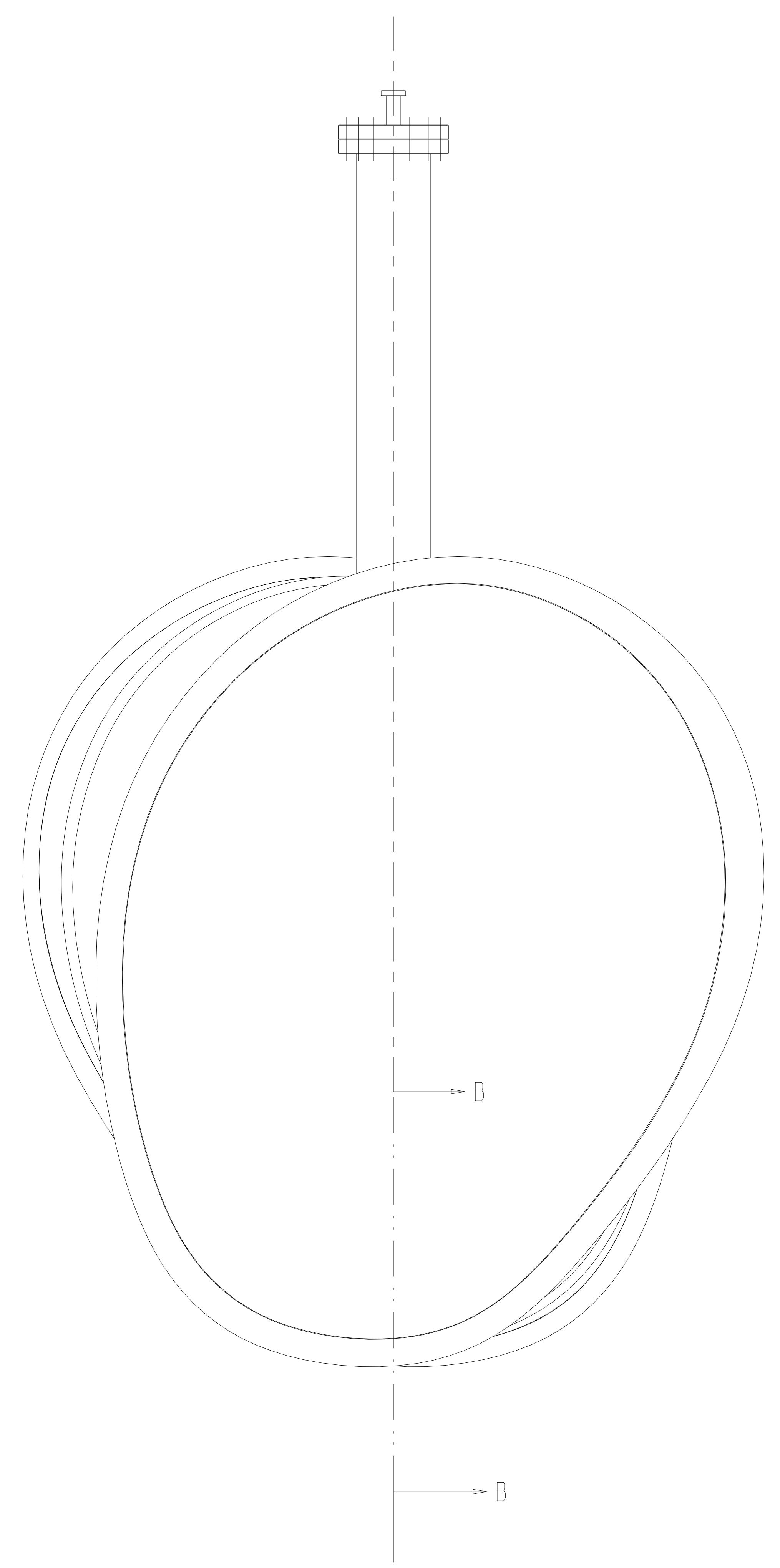
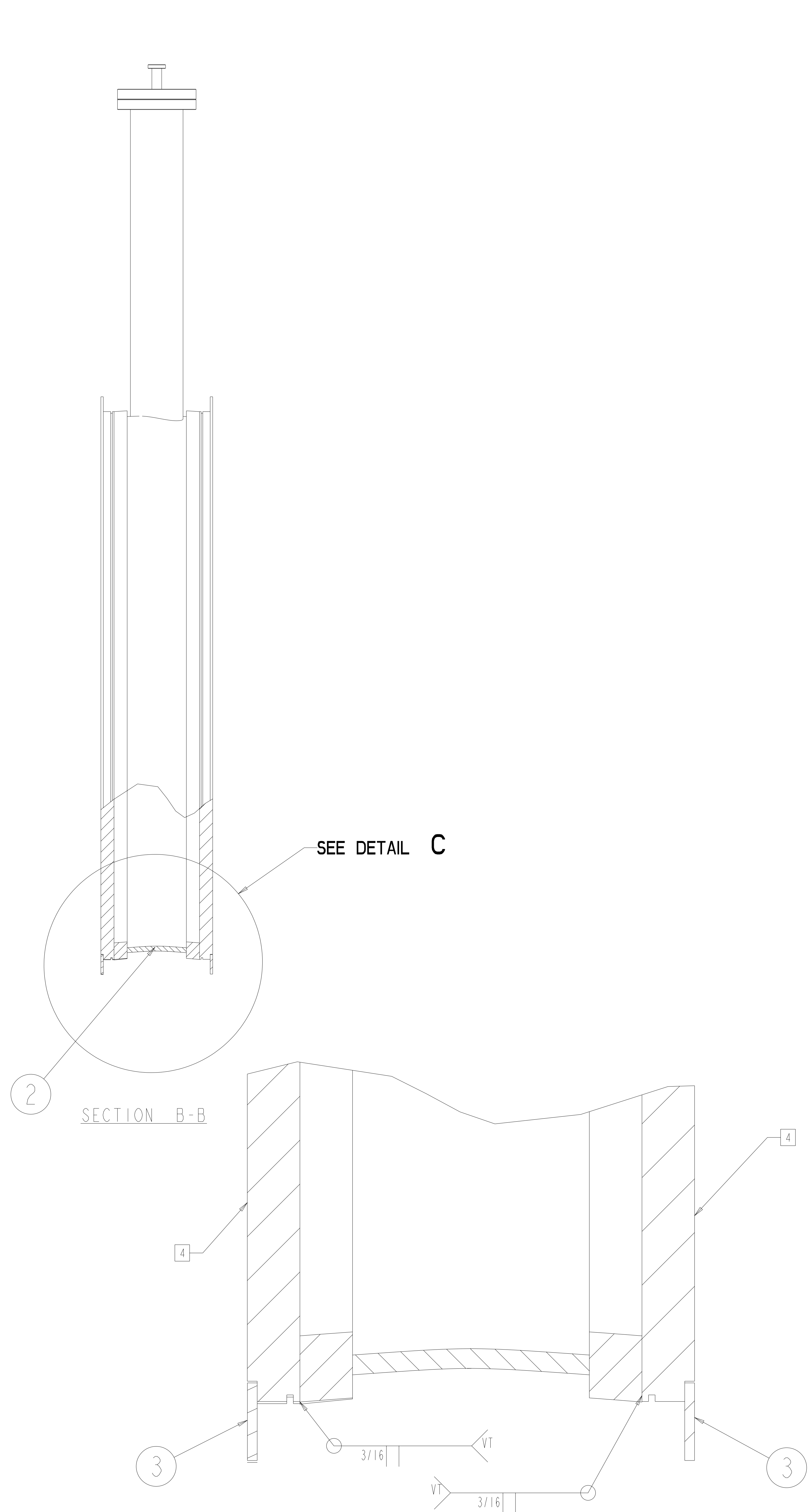


- NOTES:
1. INTERPRET DIMENSIONS AND TOLERANCES PER ANSI Y14.5M.
  2. DIMENSION ARE IN INCHES.
  3. FABRICATION, INSPECTION, AND TESTING SHALL BE PERFORMED IN ACCORDANCE WITH SPECIFICATION NCSX-CSPEC-121-02 AND STATEMENT OF WORK NCSX-SOW-121-03.
  4. REMOVE BLANK OFF FLANGES (ITEM -3), AFTER LEAK TESTING.



**RELEASED FOR  
 FABRICATION / INSTALLATION**  
 PPPL Drafting:

WEIGHT = 875.027

SCALE: 0.12

WELDING ENGINEER  
 APPROVED R. PARSELLS DATE: 6/04

REV	DESCRIPTION	BY	DATE	CHK	DEPT	DATE	PE	REQ	DATE	ORNL	DOE	DATE

next assy	AR	CAGE CODE	PART OR IDENTIFYING NO	NOMENCLATURE OR DESCRIPTION	MATERIAL	SPECIFICATION	FIND NO
SE120-002	2		-4	WELD, FILLER METAL			4
	1		SE121-102	VACUUM VESSEL BLANK OFF COVER SEAL WELD'NT			3
	1		SE121-014	VACUUM VESSEL SPACER WELDMENT			2
	1		-1	VACUUM VESSEL SPACER LEAK CHECK ASSEMBLY			1

PARTS LIST

SCALE AS NOTED	DES: P. GORANSON 6/04	UT-BATTELLE	Oak Ridge National Laboratory managed for the DEPARTMENT OF ENERGY under U.S. GOVERNMENT contract DE-AC05-00OR22725 UT-BATTELLE, LLC, Oak Ridge, Tennessee						
TOLERANCES UNLESS OTHERWISE SPECIFIED	DRW: G. FORTIER 6/04		PROJECT NAME: NATIONAL COMPACT STELLARATOR EXPERIMENT						
FRACTIONS ±.01	CHK: M. J. COLE 6/04	VACUUM VESSEL SPACER LEAK CHECK ASSEMBLY							
XX DECIMALS ±.01	SECT: :	VERSION NO. 19	PLANT X-10	BLDG 5700	FL 3	SHT 1	OF 1	TYPE S	CLASS U
XXX DECIMALS ±.005	DEPT: :	RELEASE LEVEL	Fabrication		SE121-020	REV 0			
ANGLES ±0°15'	PE: :								
BREAK SHARP EDGES .06 MAX	CR: :								
FINISH .125 UNLESS OTHERWISE SPECIFIED	PJ: :								
	REG: :								
	PPPL DRFT J. SIEGEL 6/04								
	DATE								

NO REPRESENTATION OR WARRANTY, EXPRESSED OR IMPLIED, IS MADE AS TO THE ACCURACY, COMPLETENESS OR USEFULNESS OF THE INFORMATION OR STATEMENTS CONTAINED IN THESE DRAWINGS, OR THAT THE USE OR DISCLOSURE OF ANY INFORMATION, APPARATUS, METHOD OR PROCESS DISCLOSED IN THESE DRAWINGS MAY NOT INFRINGE PRIVATE RIGHTS OF OTHERS. NO LIABILITY IS ASSUMED WITH RESPECT TO THE USE OF, OR FOR DAMAGES RESULTING FROM THE USE OF, ANY INFORMATION, APPARATUS, METHOD OR PROCESS DISCLOSED IN THESE DRAWINGS. DRAWINGS MADE AVAILABLE FOR INFORMATION TO BIDDER ARE NOT TO BE USED FOR OTHER PURPOSES, AND ARE TO BE RETURNED UPON REQUEST OF THE FORWARDING CONTRACTOR.

**P** THIS DRAWING PRODUCED ON PRO-ENGINEER

DETAIL C  
 SCALE 1.000

H  
G  
F  
E  
D  
C  
B  
A