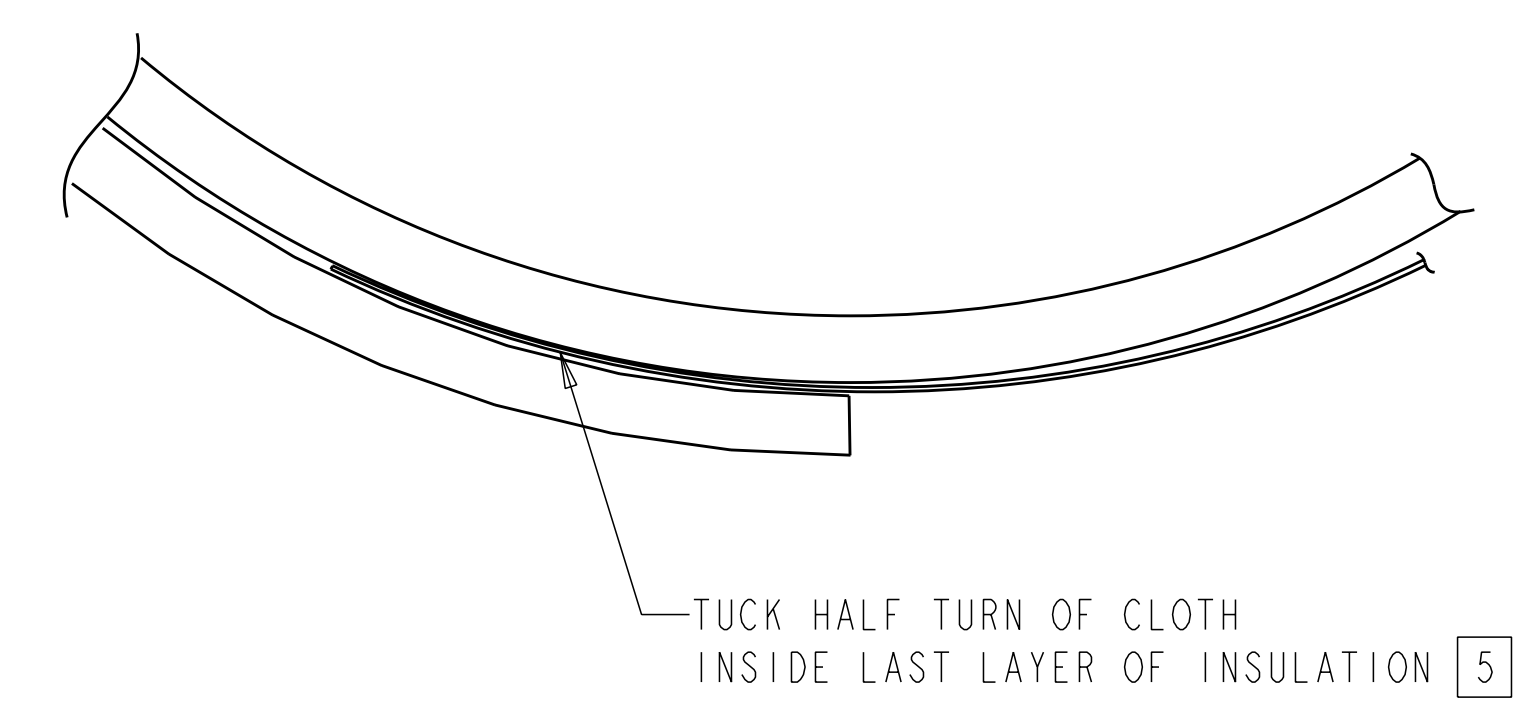
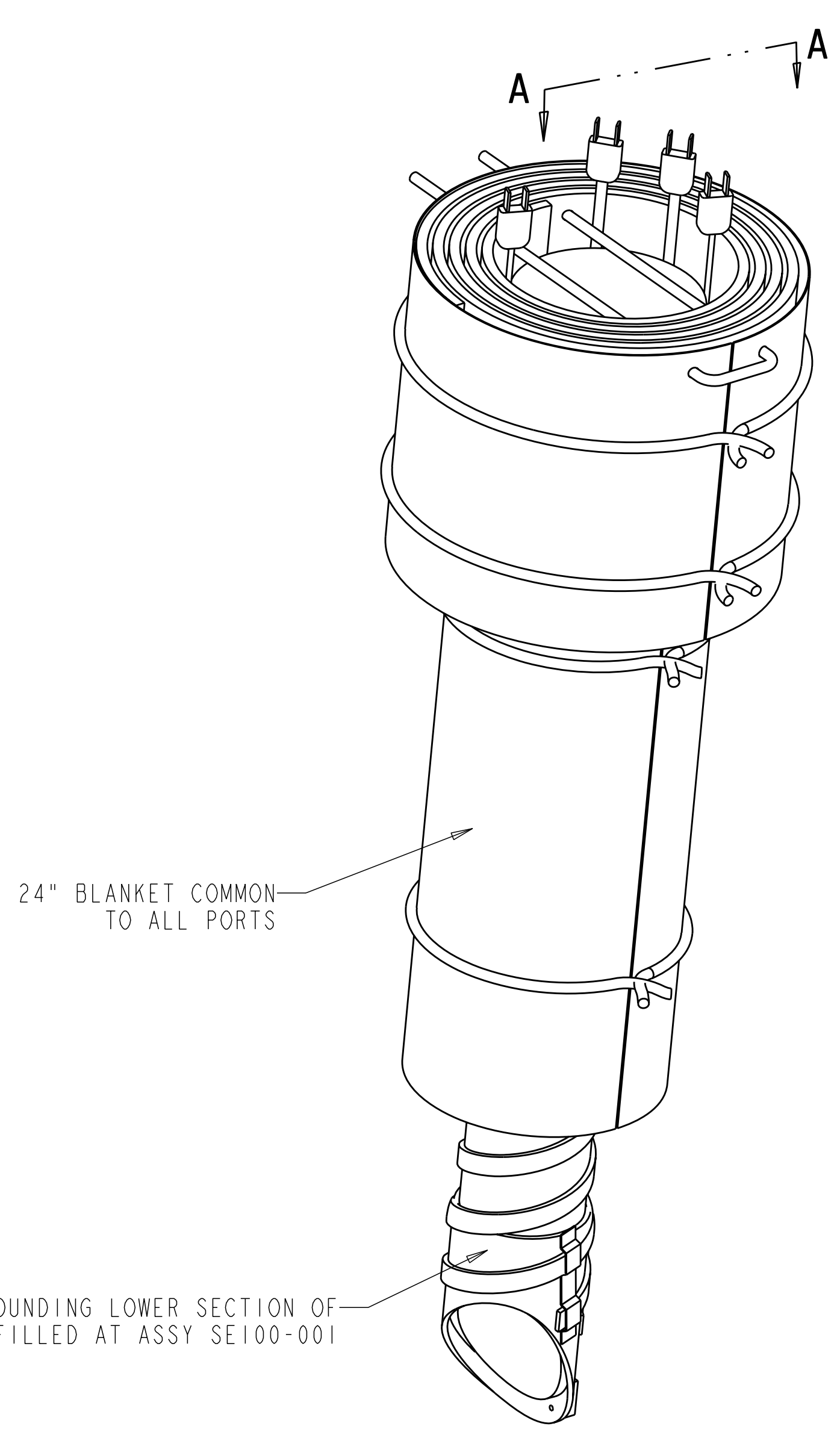
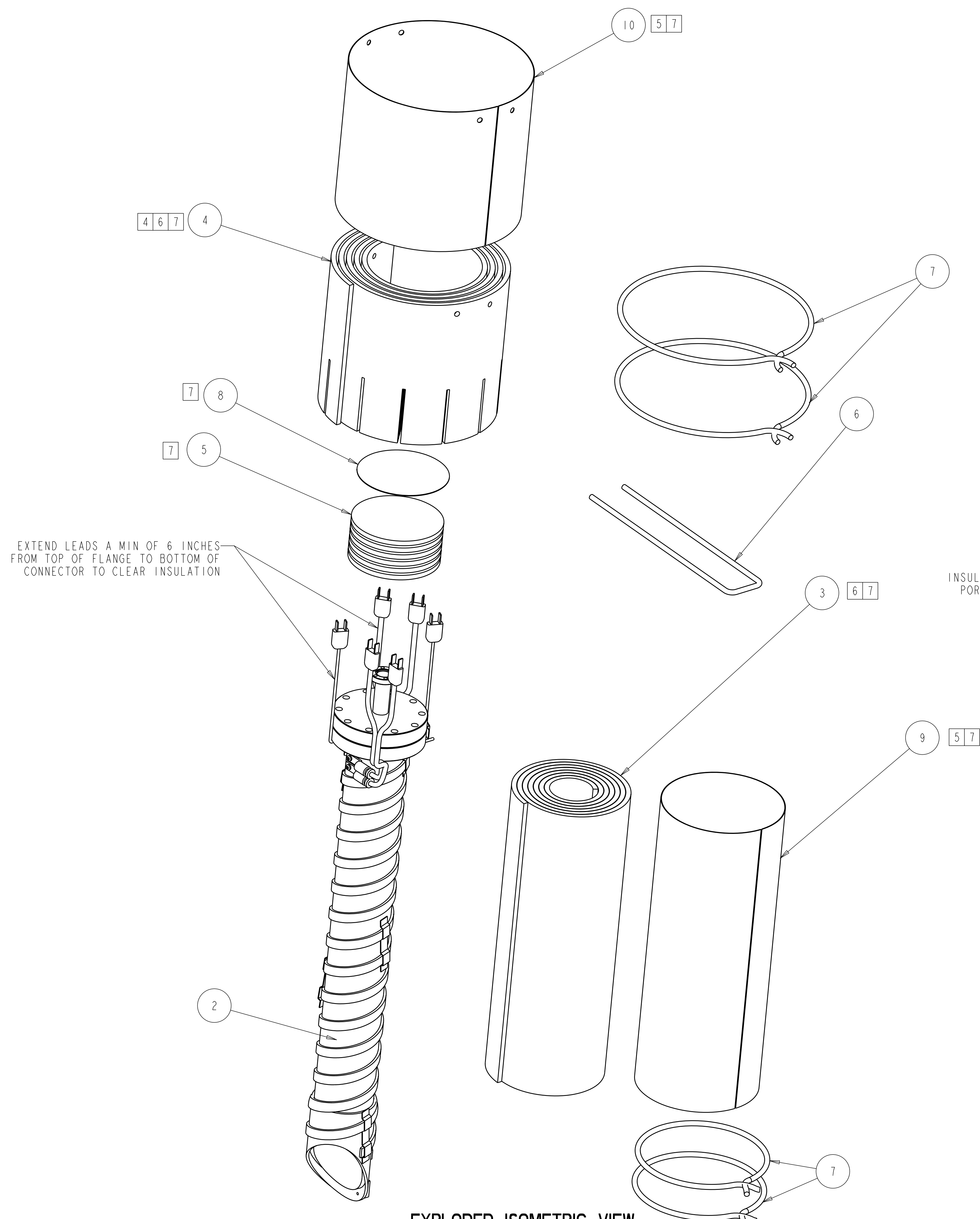


- NOTES
- DRAWING PREPARED IN ACCORDANCE WITH ASME Y14.100-2004.
 - INTERPRET DIMENSIONS AND TOLERANCES PER ASME Y14.5M-1994.
 - DIMENSIONS ARE IN INCHES.
 - SLIT INSULATION, F/N 4, AS REQ'D TO AID IN FORMING OVER FLANGE.
 - TUCK 1/2 TURN OF CLOTH, F/N 9 AND 10, PRIOR TO COVERING ENTIRE BLANKET, F/N 3 AND 4.
 - WRAP INSULATION AS REQUIRED TO ACHIEVE 2" THICKNESS.
 - BLANKET AND CLOTH LENGTHS/DIA WILL VARY AS PORT SIZES VARY. MATERIAL SIZES LISTED ARE BASED ON THE LARGER DIA PORT DIMENSIONS. TRIM EXCESS LENGTH/DIA FOR SMALLER SIZES AS REQ'D.
 - MAGNETIC PERMEABILITY NOT TO EXCEED 1.02 AS TESTED BY A SEVERN INDICATOR. AVAILABLE FROM:
 SEVERN ENGINEERING
 AUBURN, ALABAMA 36830
 WWW.SEVERNGINEERING.COM



RELEASED FOR FABRICATION / INSTALLATION
 PPPL Drafting:

-1 THRU -11 PORT 2, 8, 11, 15, 17, 18, AND SPACER PORT INSULATION ASSY
 SCALE 0.380

REV	DESCRIPTION	BY	DATE	CHK	DEPT	DATE	PE	REQ	DATE	ORNL	DOE	DATE	CAGE CODE	PART OR IDENTIFYING NO	NOMENCLATURE OR DESCRIPTION	MATERIAL	SPECIFICATION	FIND NO
5 7																60 X 8		10
5 7															NOMEX CLOTH	50 X 24	NCSX-PRL-12-001	9
7																Ø6		8
		AR	AR	AR	AR	AR	AR	AR	AR	AR	AR	AR			Ø.05 WIRE TIE		ASTM A313	7
		1	2	2	1	1	1	1	1	1	1	1			CAP RETAINING STAPLE Ø.12 WIRE, 11" LEGS, 2" CENTERS	316L SST ANNEALED		6
7		8	16	16	8	8	8	8	8	8	8	8			PYROGEL CAP BLANKET	Ø6 X .25 THK		5
4 6 7		1	2	2	1	1	1	1	1	1	1	1			PYROGEL FLANGE BLANKET	260 X 8 X .25 THK	NCSX-PRL-12-004	4
6 7		1	2	2	1	1	1	1	1	1	1	1			PYROGEL PORT BLANKET	230 X 24 X .25 THK		3
														SE123-151-11	SPACER PORT HEATER TAPE AND THERMOCOUPLE ASSEMBLY			2
														SE123-151-10	PORT 17B, 18B DOME WITH HEATER TAPE AND THERMOCOUPLE ASSEMBLY			2
														SE123-151-9	PORT 17A, 18A DOME WITH HEATER TAPE AND THERMOCOUPLE ASSEMBLY			2
														SE123-151-8	PORT 15B WITH HEATER TAPE AND THERMOCOUPLE ASSEMBLY			2
														SE123-151-7	PORT 15A WITH HEATER TAPE AND THERMOCOUPLE ASSEMBLY			2
														SE123-151-6	PORT 11B WITH HEATER TAPE AND THERMOCOUPLE ASSEMBLY			2
														SE123-151-5	PORT 11A WITH HEATER TAPE AND THERMOCOUPLE ASSEMBLY			2
														SE123-151-4	PORT 8B WITH HEATER TAPE AND THERMOCOUPLE ASSEMBLY			2
														SE123-151-3	PORT 8A WITH HEATER TAPE AND THERMOCOUPLE ASSEMBLY			2
														SE123-151-2	PORT 2B WITH HEATER TAPE AND THERMOCOUPLE ASSEMBLY			2
														SE123-151-1	PORT 2A WITH HEATER TAPE AND THERMOCOUPLE ASSEMBLY			2
AR														-11	SPACER PORT INSULATION ASSEMBLY			1
AR														-10	PORT 17B, 18B DOME INSULATION ASSEMBLY			1
AR														-9	PORT 17A, 18A DOME INSULATION ASSEMBLY			1
AR														-8	PORT 15B INSULATION ASSEMBLY			1
AR														-7	PORT 15A INSULATION ASSEMBLY			1
AR														-6	PORT 11B INSULATION ASSEMBLY			1
AR														-5	PORT 11A INSULATION ASSEMBLY			1
AR														-4	PORT 8B INSULATION ASSEMBLY			1
AR														-3	PORT 8A INSULATION ASSEMBLY			1
AR														-2	PORT 2B INSULATION ASSEMBLY			1
AR														-1	PORT 2A INSULATION ASSEMBLY			1

NO REPRESENTATION OR WARRANTY, EXPRESSED OR IMPLIED, IS MADE AS TO THE ACCURACY, COMPLETENESS OR USEFULNESS OF THE INFORMATION OR STATEMENTS CONTAINED IN THESE DRAWINGS, OR THAT THE USE OR DISCLOSURE OF ANY INFORMATION, APPARATUS, METHOD OR PROCESS DISCLOSED IN THESE DRAWINGS MAY NOT INFRINGE PRIVATE RIGHTS OF OTHERS. NO LIABILITY IS ASSUMED WITH RESPECT TO THE USE OF, OR FOR DAMAGES RESULTING FROM THE USE OF, ANY INFORMATION, APPARATUS, METHOD OR PROCESS DISCLOSED IN THESE DRAWINGS. DRAWINGS MADE AVAILABLE FOR INFORMATION TO BIDDER ARE NOT TO BE USED FOR OTHER PURPOSES, AND ARE TO BE RETURNED UPON REQUEST OF THE FORWARDING CONTRACTOR.

P THIS DRAWING PRODUCED ON PRO-ENGINEER

REV	DESCRIPTION	BY	DATE	CHK	DEPT	DATE	PE	REQ	DATE	ORNL	DOE	DATE
0	ORIGINAL ISSUE	GWM	01/07	SP		01/07						

SCALE	NOTED	DES	PL	DATE
		PL	GORANSON	01/07
		DRW	G MCGINNIS	01/07
		CHK	S PARSON	01/07
		SECT		
		DEPT		
		PE		
		CR		
		PJ		
		RD		
		FINISH		

VERSION NO.	PLANT ORNL	BLDG	FL	SHT	OF	TYPE	CLASS
10		5700	3	1	1	A	U

UT-BATTELLE
 NATIONAL COMPACT STELLARATOR EXPERIMENT
 PORT 2, 8, 11, 15, 17, 18, AND SPACER PORT INSULATION ASSEMBLY TYPICAL INSTALLATION
 SE122-080

SE122-080