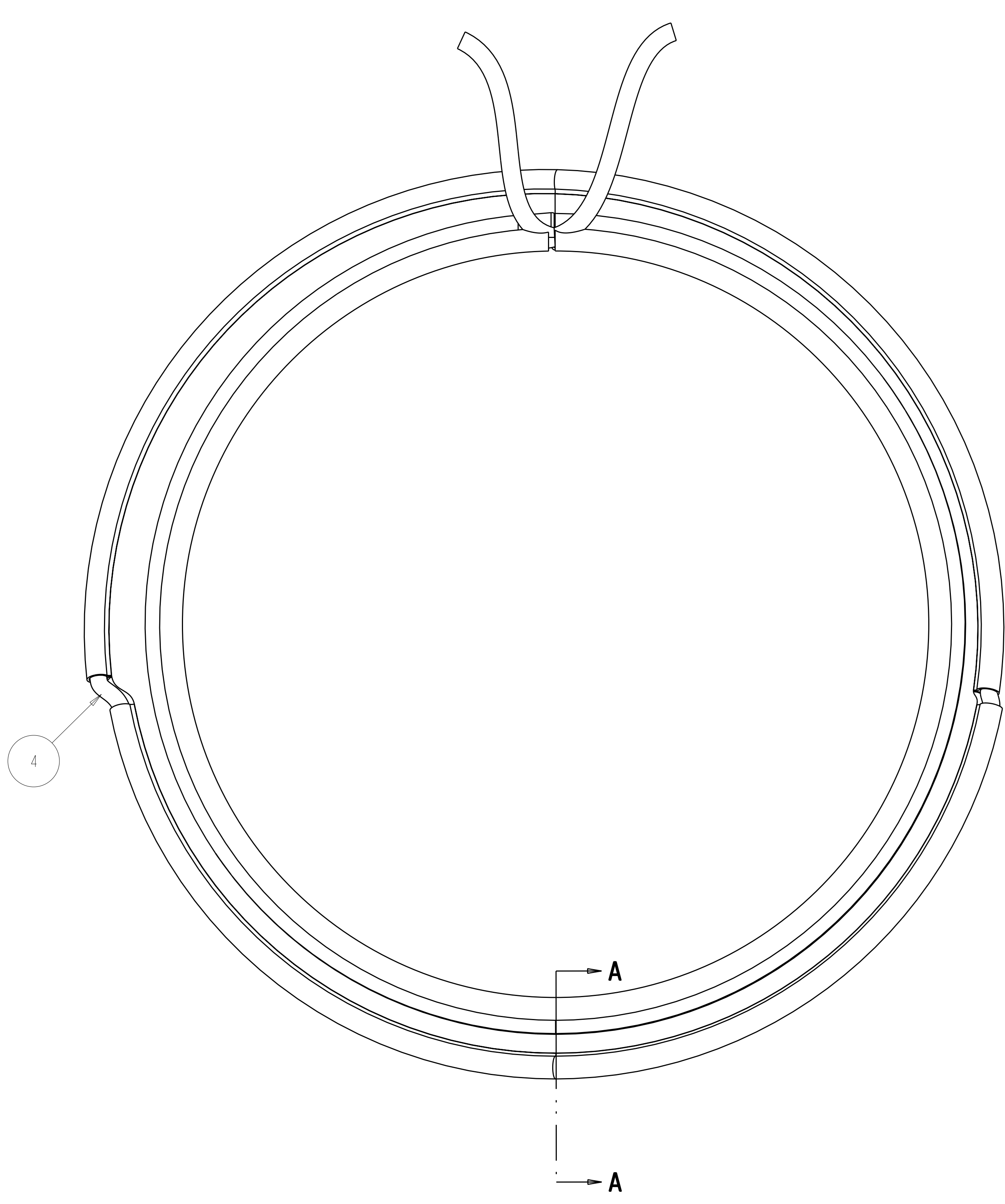
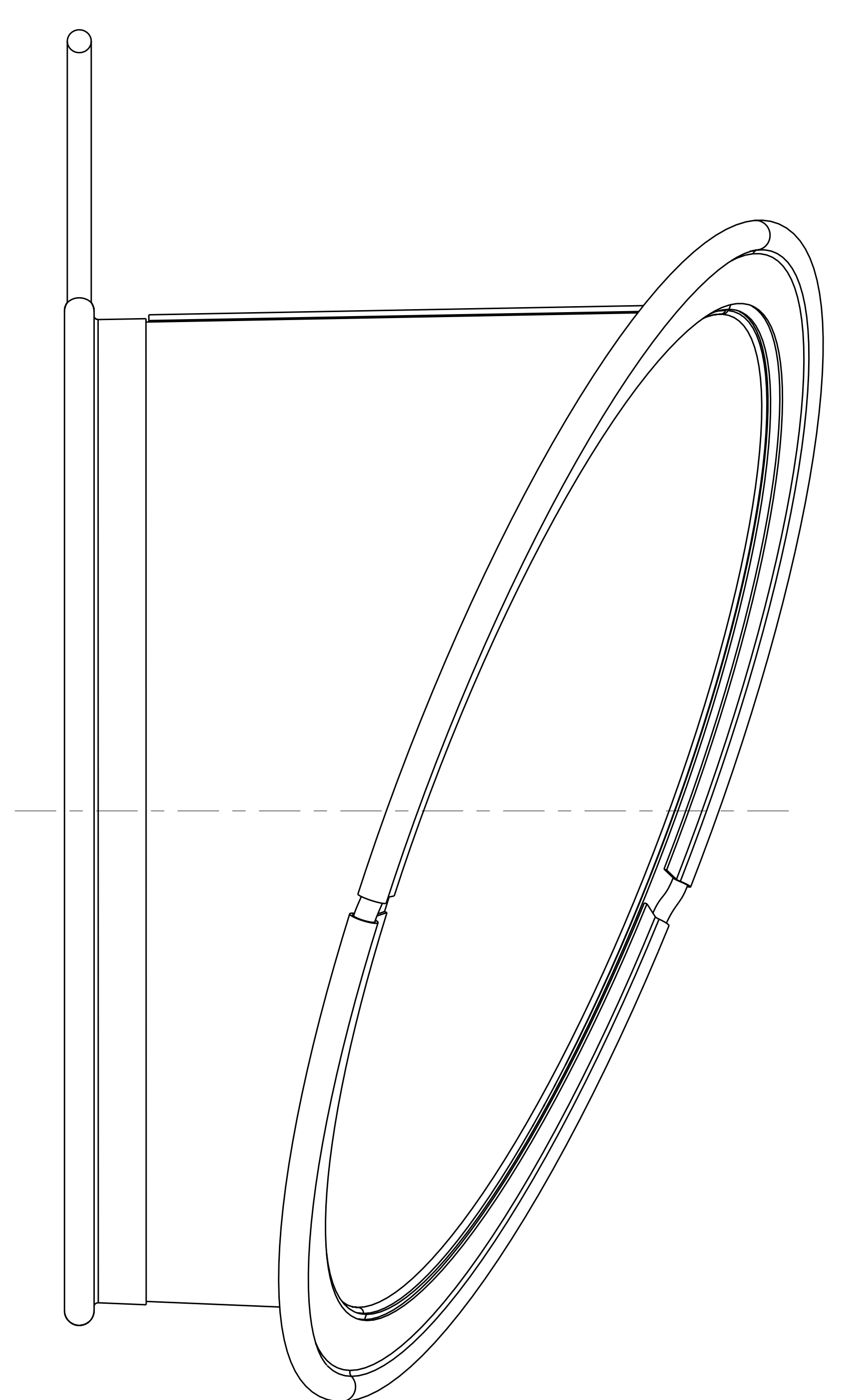


ISOMETRIC VIEW
SCALE 0.500



-1 PORT 7 WINDING FORM SEAL BOOT ASSEMBLY
SCALE 1.000



DOUBLE STITCH HEM, MINIMUM .38 OVERLAP OF F/N 2 TO FORM CONE SHAPE

- NOTES
- DRAWING PREPARED IN ACCORDANCE WITH ASME Y14.100-2004.
 - INTERPRET DIMENSIONS AND TOLERANCES PER ASME Y14.5M-1994.
 - DIMENSIONS ARE IN INCHES
 - FLAT PATTERNS TO BE CREATED FROM FULL SIZE PLOT. VERIFY PLOT SIZE WITH 1:1 SCALE GRAPH PROVIDED ON DRAWING.
 - FLAT PATTERNS SHALL MATCH FULL SIZE PLOT WITHIN +/- .06.
 - VERIFY HEM PROFILE IN ASSEMBLY SE122-352.

F/N 2 - DOUBLE STITCH HEM WITH MINIMUM .38 OVERLAP ENCLOSE WITHIN HEM \varnothing .25 ROPE, F/N 4, TO ACT AS A DRAW STRING. PROVIDE HOLE THRU THE HEM SO THAT THE ENDS OF THE DRAW STRING EXTEND A MINIMUM OF 6" PER LEAD (12" TOTAL).

CENTER F/N 2 ON F/N 3 WITH MINIMUM .38 OVERLAP. DOUBLE STITCH HEM ALL AROUND OPENING IN F/N 3

SECTION A-A
SCALE 2.000

F/N 3 - DOUBLE STITCH HEM WITH MINIMUM .38 OVERLAP ENCLOSE WITHIN HEM \varnothing .25 ROPE, F/N 4, TO ACT AS A GASKET. THE ENDS OF THE ROPE MUST BE COMPLETELY ENCLOSED WITHIN HEM. THE ENDS OF THE ROPE MUST TOUCH WITHIN THE HEM BUT MAY NOT OVERLAP, CREATING A BULGE.

RELEASED FOR FABRICATION / INSTALLATION
PPPL Drafting:

| REV | DESCRIPTION | BY | DATE | CHK | DEPT | DATE | PE | REQ | DATE | ORNL | DOE | DATE |
|-----|----------------|-----|-------|-----|------|-------|----|-----|------|------|-----|------|
| 0 | ORIGINAL ISSUE | RAH | 01/01 | SP | | 01/01 | | | | | | |

| CAGE CODE | PART OR IDENTIFYING NO | NOMENCLATURE OR DESCRIPTION | MATERIAL | SPECIFICATION | FIND NO |
|-----------|------------------------|-----------------------------|--|-----------------|---------|
| 6 4 | 1 | -4 | \varnothing .25 ROPE | NCSX-PRL-12-001 | 4 |
| 6 4 | 1 | -3 | PORT 7 WINDING FORM SEAL BOOT BACK | NCSX-PRL-12-001 | 3 |
| 4 | 1 | -2 | PORT 7 WINDING FORM SEAL BOOT CONE | NCSX-PRL-12-001 | 2 |
| AR | X | -1 | PORT 7 WINDING FORM SEAL BOOT ASSEMBLY | | 1 |

← NEXT ASSEMBLY

NO REPRESENTATION OR WARRANTY, EXPRESSED OR IMPLIED, IS MADE AS TO THE ACCURACY, COMPLETENESS OR USEFULNESS OF THE INFORMATION OR STATEMENTS CONTAINED IN THESE DRAWINGS, OR THAT THE USE OR DISCLOSURE OF ANY INFORMATION, APPARATUS, METHOD OR PROCESS DISCLOSED IN THESE DRAWINGS MAY NOT INFRINGE PRIVATE RIGHTS OF OTHERS. NO LIABILITY IS ASSUMED WITH RESPECT TO THE USE OF, OR FOR DAMAGES RESULTING FROM THE USE OF, ANY INFORMATION, APPARATUS, METHOD OR PROCESS DISCLOSED IN THESE DRAWINGS. DRAWINGS MADE AVAILABLE FOR INFORMATION TO BIDDER ARE NOT TO BE USED FOR OTHER PURPOSES, AND ARE TO BE RETURNED UPON REQUEST OF THE FORWARDING CONTRACTOR.

P THIS DRAWING PRODUCED ON PRO-ENGINEER

SCALE NOTED
TOLERANCES UNLESS OTHERWISE SPECIFIED

FRACTIONS :
XX DECIMALS ±.01
XXX DECIMALS ±.005
ANGLES ±0°15'
BREAK SHARP EDGES OR MAX
FINISH .125 UNLESS OTHERWISE SPECIFIED

DES P. L. GORANSON 01/07
DRW R. A. HURD 01/07
CHK S. PARSON 01/07
SECT :
DEPT :
PE :
CR :
PJ :
RD :
PPPL DRFT J. SIEGEL 01/07

UT-BATTELLE
Oak Ridge National Laboratory managed for the DEPARTMENT OF ENERGY under U.S. GOVERNMENT contract DE-AC05-00OR22725 UT-BATTELLE, LLC. Oak Ridge, Tennessee

NATIONAL COMPACT STELLARATOR EXPERIMENT
PORT 7 WINDING FORM SEAL BOOT ASSEMBLY

| | | | | | | | |
|---------------|-------|------|-----------|-----|----|------|-------|
| VERSION NO. | PLANT | BLDG | FL | SHT | OF | TYPE | CLASS |
| 5 | ORNL | 5700 | 3 | 1 | 2 | A | U |
| RELEASE LEVEL | | | SE122-355 | | | | |
| Fabrication | | | REV 0 | | | | |

8

7

6

5

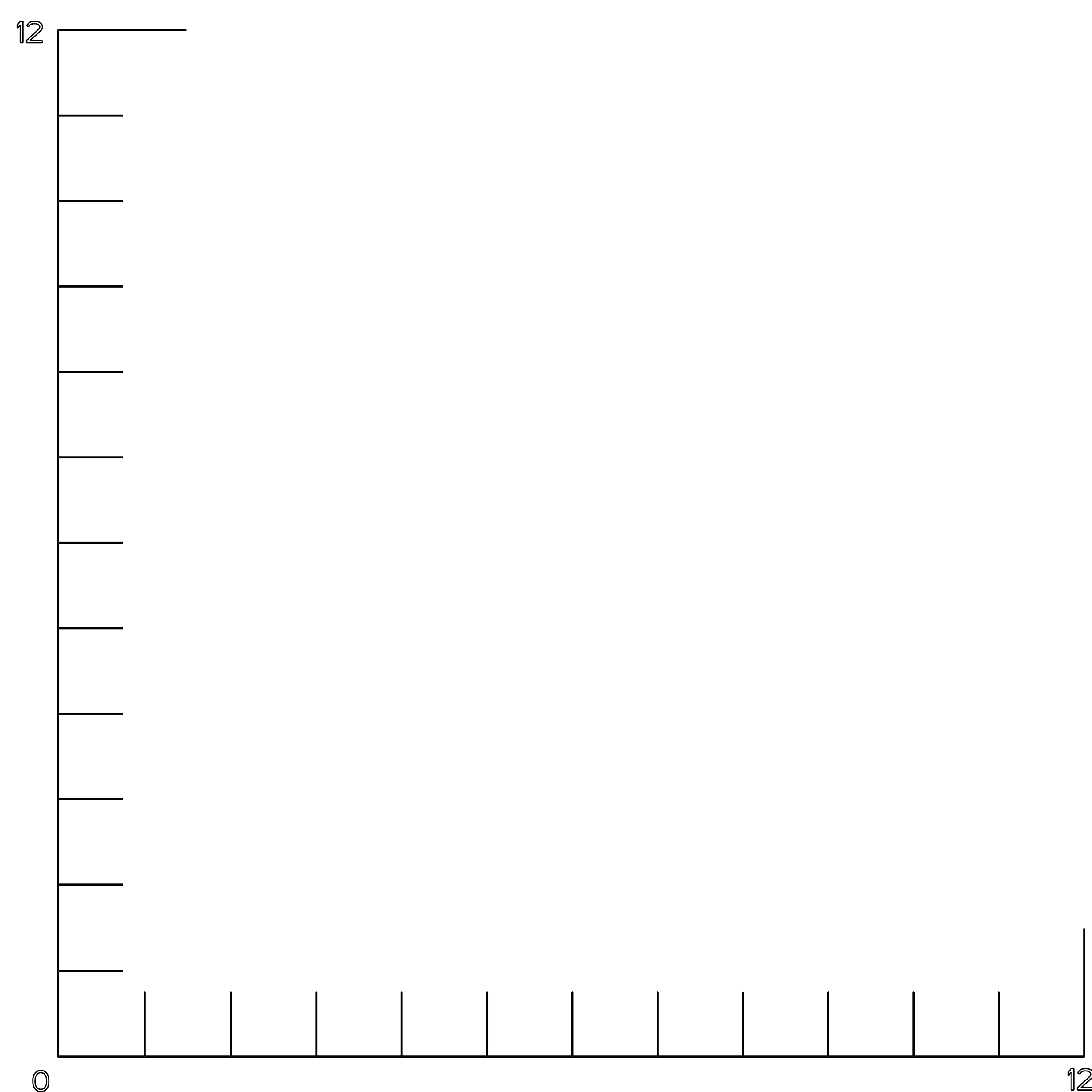
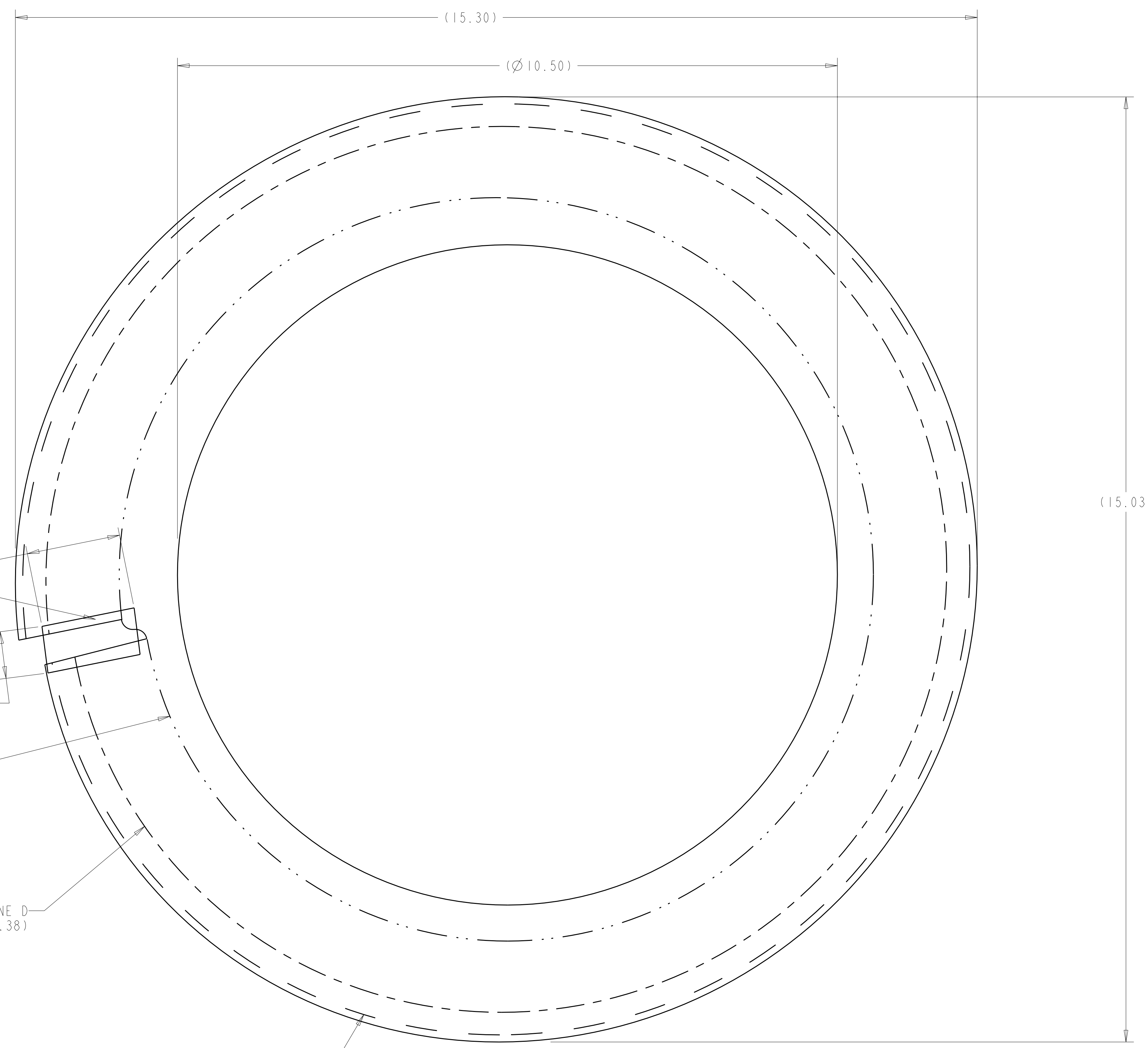
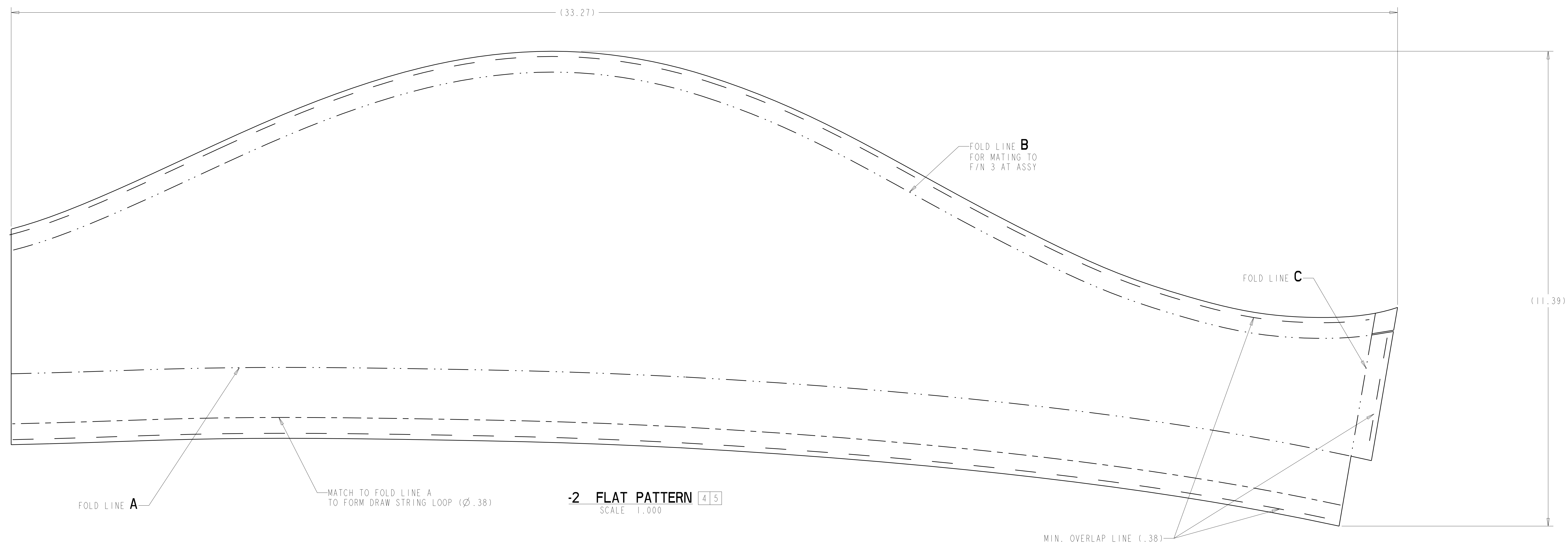
4

3

2

1

NEXT ASS'Y: 1 FINAL ASS'Y:



1:1 SCALE AT FULL SIZE [4]

RELEASED FOR FABRICATION / INSTALLATION

PPPL Drafting:

| | | | | | | | | | |
|---|---------------|--------------|---------|-------------|-----------|------------|----------|--|--|
| Oak Ridge National Laboratory managed for the DEPARTMENT OF ENERGY under U.S. GOVERNMENT contract DE-AC05-00OR22725 UT-BATTELLE, LLC, Oak Ridge, Tennessee | | | | | | | | | |
| UT-BATTELLE | | | | | | | | | |
| PROJECT NAME NATIONAL COMPACT STELLARATOR EXPERIMENT | | | | | | | | | |
| PORT 7 WINDING FORM SEAL BOOT ASSEMBLY | | | | | | | | | |
| VERSION NO. 5 | PLANT ORNL | BLDG 5700 | FL 3 | SHT OF 2 | TYPE 2 | CLASS A | REV U | | |
| RELEASE LEVEL Fabrication | | SE 122-355 | | | | | | | |

B SE 122-355

A