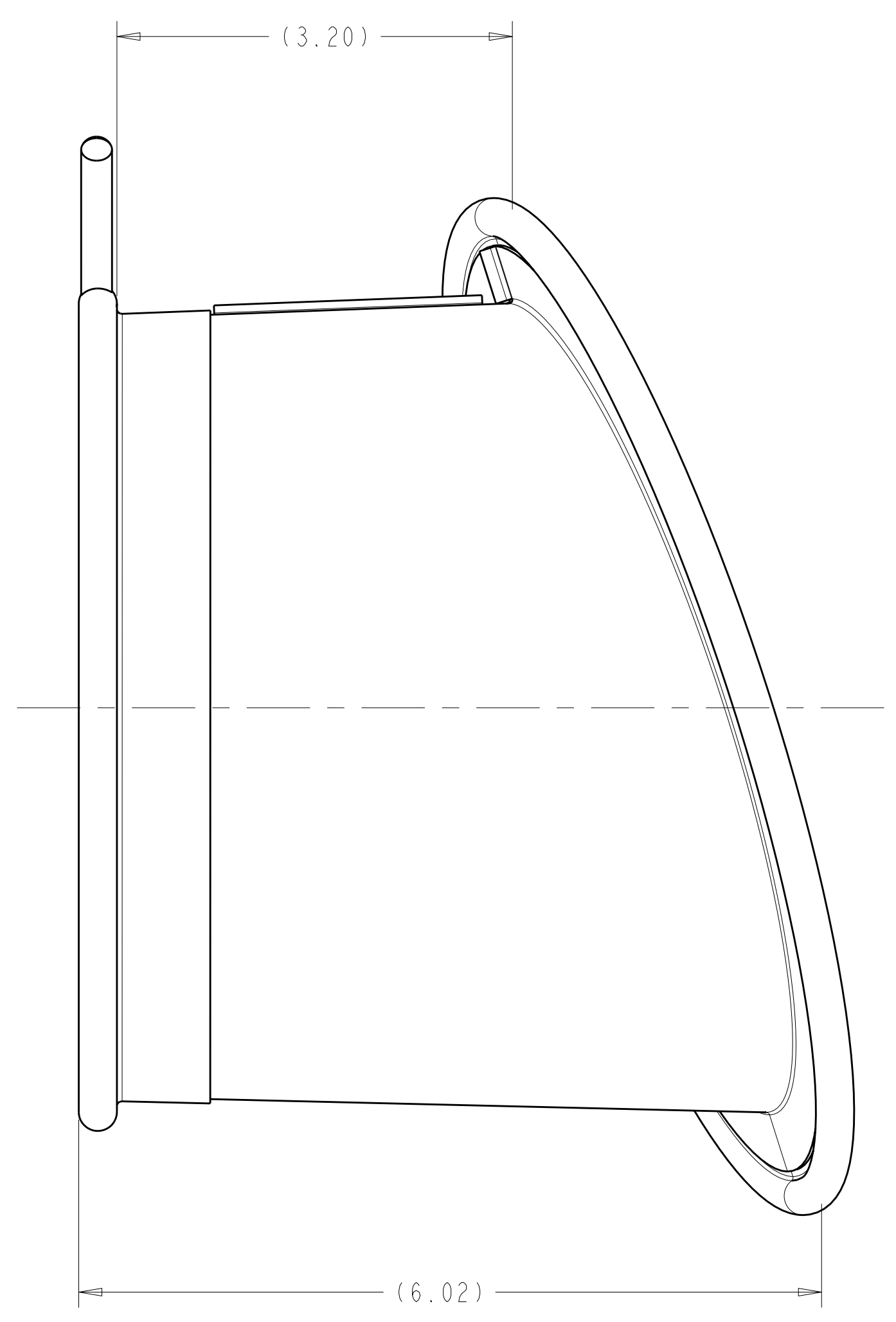
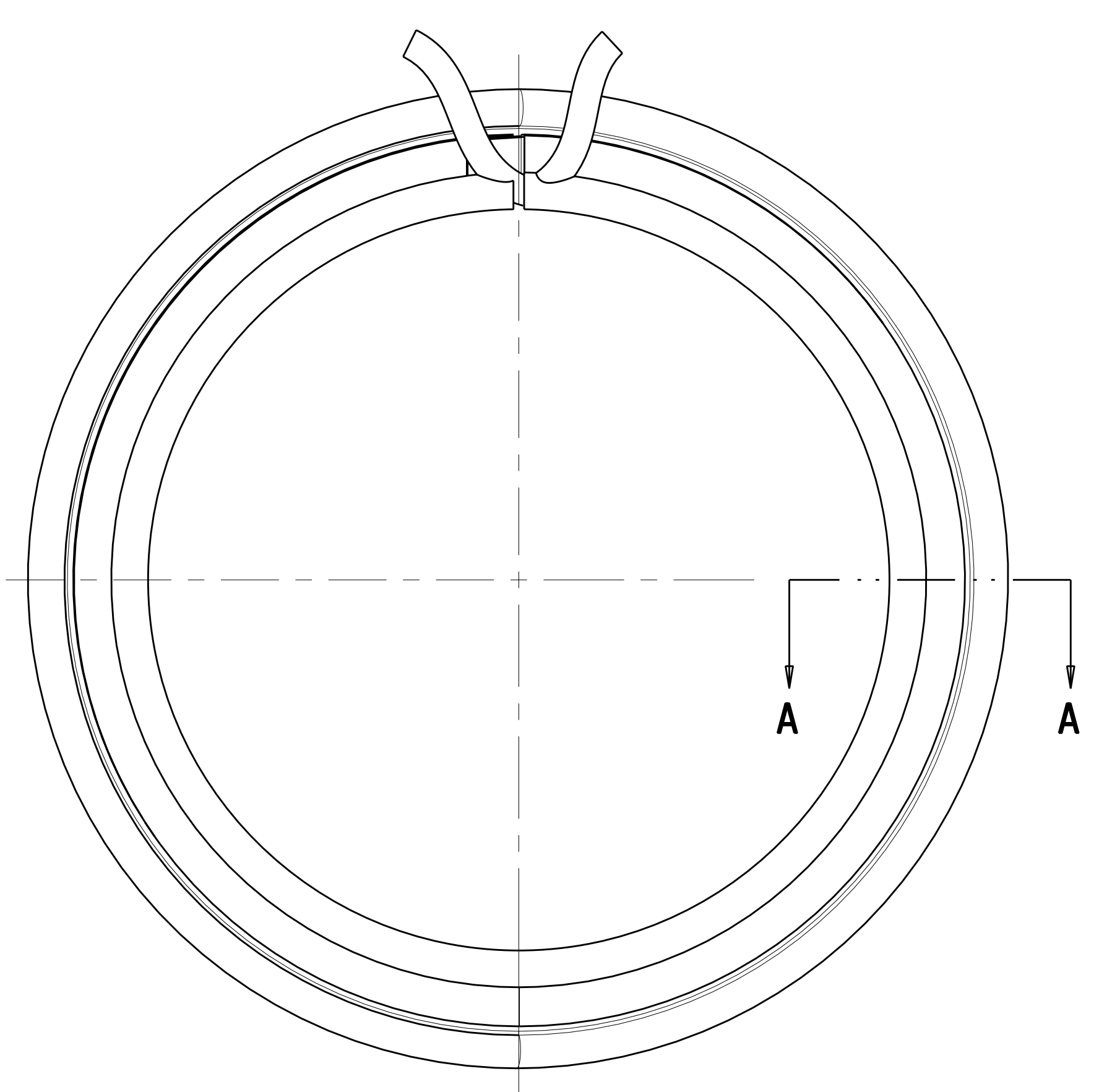
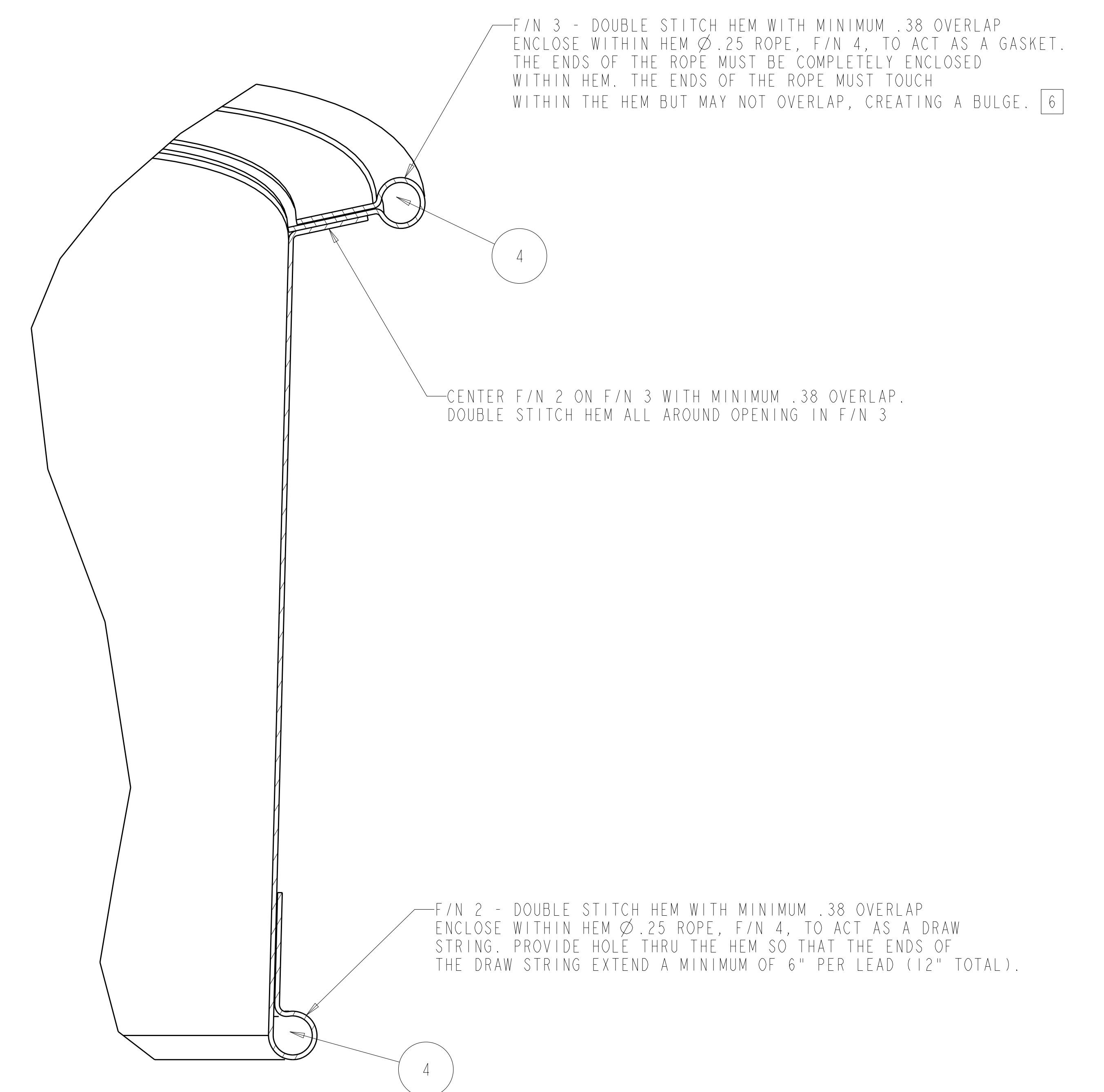


ISOMETRIC VIEW
SCALE 1.000



-1 PORT 15 WINDING FORM SEAL BOOT ASSEMBLY
SCALE 1.000



SECTION A-A
SCALE 2.000

**RELEASED FOR
FABRICATION / INSTALLATION**
PPPL Drafting:

- NOTES
- DRAWING PREPARED IN ACCORDANCE WITH ASME Y14.100-2004.
 - INTERPRET DIMENSIONS AND TOLERANCES PER ASME Y14.5M-1994.
 - DIMENSIONS ARE IN INCHES
 - FLAT PATTERNS TO BE CREATED FROM FULL SIZE PLOT. VERIFY PLOT SIZE WITH 1:1 SCALE GRAPH PROVIDED ON DRAWING.
 - FLAT PATTERNS SHALL MATCH FULL SIZE PLOT WITHIN +/- .06.
 - VERIFY HEM PROFILE IN ASSEMBLY SE122-372.

F/N 3 - DOUBLE STITCH HEM WITH MINIMUM .38 OVERLAP ENCLOSE WITHIN HEM \varnothing .25 ROPE, F/N 4, TO ACT AS A GASKET. THE ENDS OF THE ROPE MUST BE COMPLETELY ENCLOSED WITHIN HEM. THE ENDS OF THE ROPE MUST TOUCH WITHIN THE HEM BUT MAY NOT OVERLAP, CREATING A BULGE. 6

CENTER F/N 2 ON F/N 3 WITH MINIMUM .38 OVERLAP. DOUBLE STITCH HEM ALL AROUND OPENING IN F/N 3

F/N 2 - DOUBLE STITCH HEM WITH MINIMUM .38 OVERLAP ENCLOSE WITHIN HEM \varnothing .25 ROPE, F/N 4, TO ACT AS A DRAW STRING. PROVIDE HOLE THRU THE HEM SO THAT THE ENDS OF THE DRAW STRING EXTEND A MINIMUM OF 6" PER LEAD (12" TOTAL).

REV	DESCRIPTION	BY	DATE	CHK	DEPT	DATE	PE	REQ	DATE	ORNL	DOE	DATE
0	ORIGINAL ISSUE	RAH	01/01	SP		01/01						

CAGE CODE	PART OR IDENTIFYING NO	NOMENCLATURE OR DESCRIPTION	MATERIAL	SPECIFICATION	FIND NO
AR	-4	\varnothing .25 ROPE		NCSX-PRL-12-001	4
4 6	1	PORT 15 WINDING FORM SEAL BOOT BACK		NCSX-PRL-12-001	3
4	1	PORT 15 WINDING FORM SEAL BOOT CONE		NCSX-PRL-12-001	2
AR	-1	PORT 15 WINDING FORM SEAL BOOT ASSEMBLY			1

← NEXT ASSEMBLY

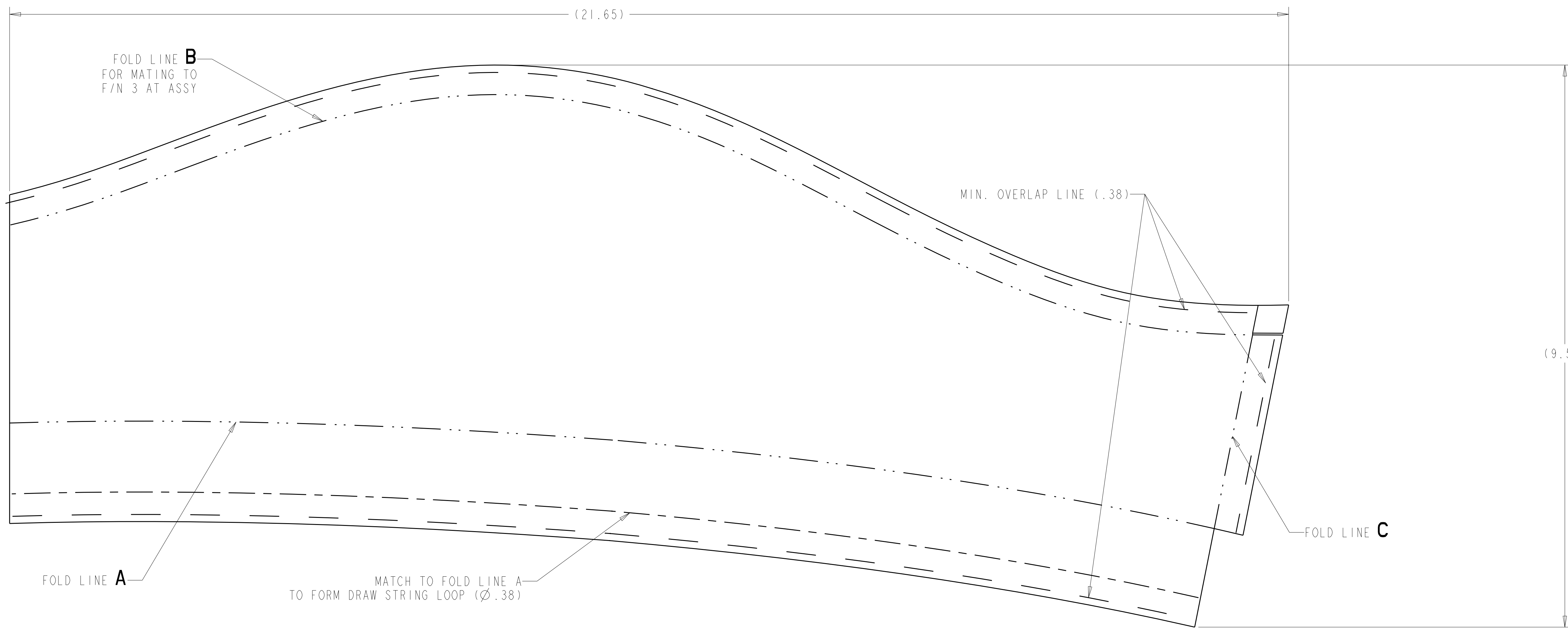
NO REPRESENTATION OR WARRANTY, EXPRESSED OR IMPLIED, IS MADE AS TO THE ACCURACY, COMPLETENESS OR USEFULNESS OF THE INFORMATION OR STATEMENTS CONTAINED IN THESE DRAWINGS, OR THAT THE USE OR DISCLOSURE OF ANY INFORMATION, APPARATUS, METHOD OR PROCESS DISCLOSED IN THESE DRAWINGS MAY NOT INFRINGE PRIVATE RIGHTS OF OTHERS. NO LIABILITY IS ASSUMED WITH RESPECT TO THE USE OF, OR FOR DAMAGES RESULTING FROM THE USE OF, ANY INFORMATION, APPARATUS, METHOD OR PROCESS DISCLOSED IN THESE DRAWINGS. DRAWINGS MADE AVAILABLE FOR INFORMATION TO BIDDER ARE NOT TO BE USED FOR OTHER PURPOSES, AND ARE TO BE RETURNED UPON REQUEST OF THE FORWARDING CONTRACTOR.

P THIS DRAWING PRODUCED ON PRO-ENGINEER

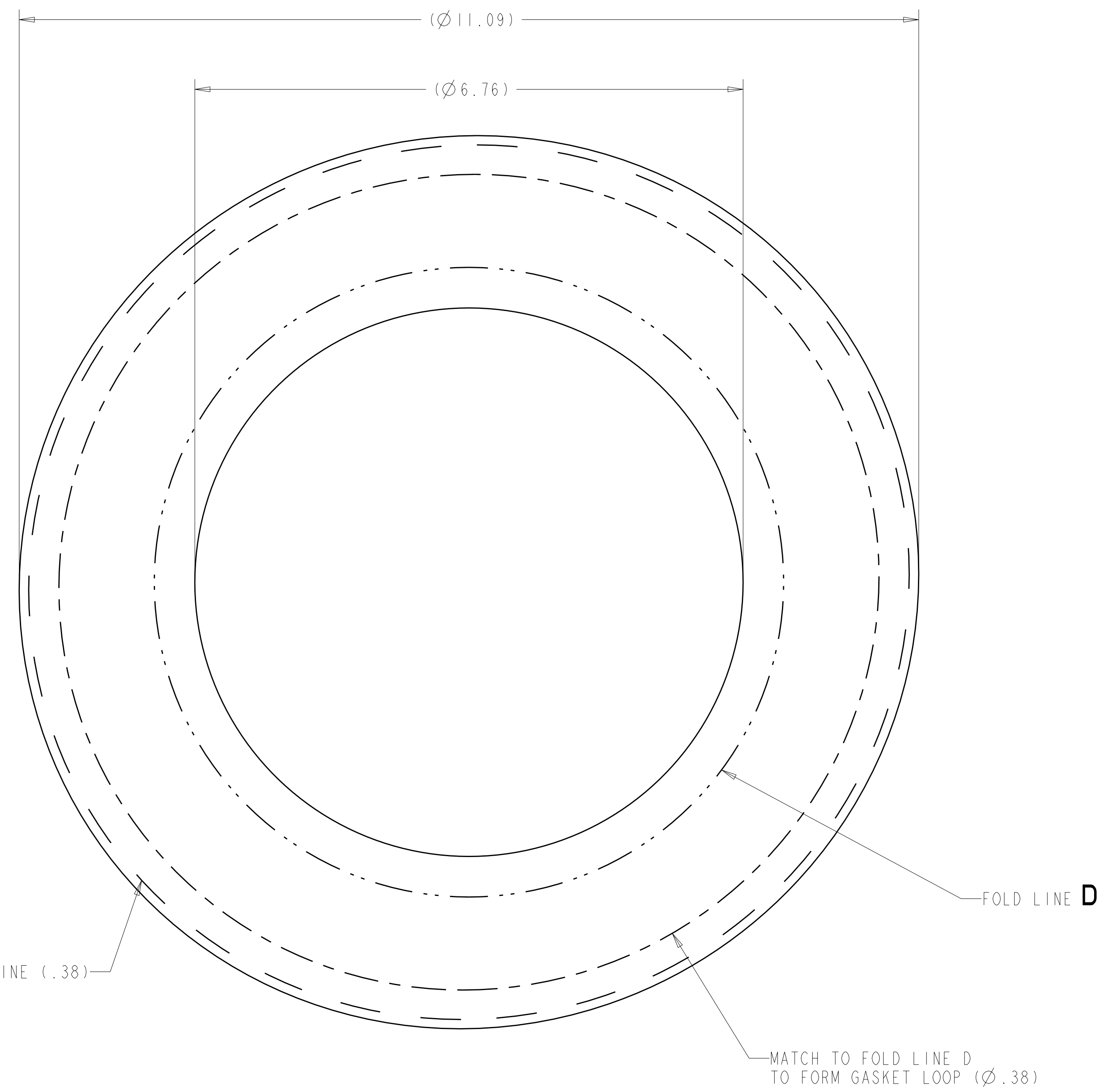
SCALE NOTED
TOLERANCES UNLESS OTHERWISE SPECIFIED
FRACTIONS :
XX DECIMALS ±.01
XXX DECIMALS ±.005
ANGLES ±0'15"
BREAK SHARP EDGES OR MAX
FINISH .125 UNLESS OTHERWISE SPECIFIED

DES P. L. GORANSON 01/07
DRW R. A. HURD 01/07
CHK S. PARSON 01/07
SECT :
DEPT :
PE :
CR :
PJ :
RD :
PPPL DRFT J. SIEGEL 01/07
VERSION NO. 5
PLANT ORNL
BLDG 5700
FL 3
SHT 1
OF 2
TYPE A
CLASS
REV 0

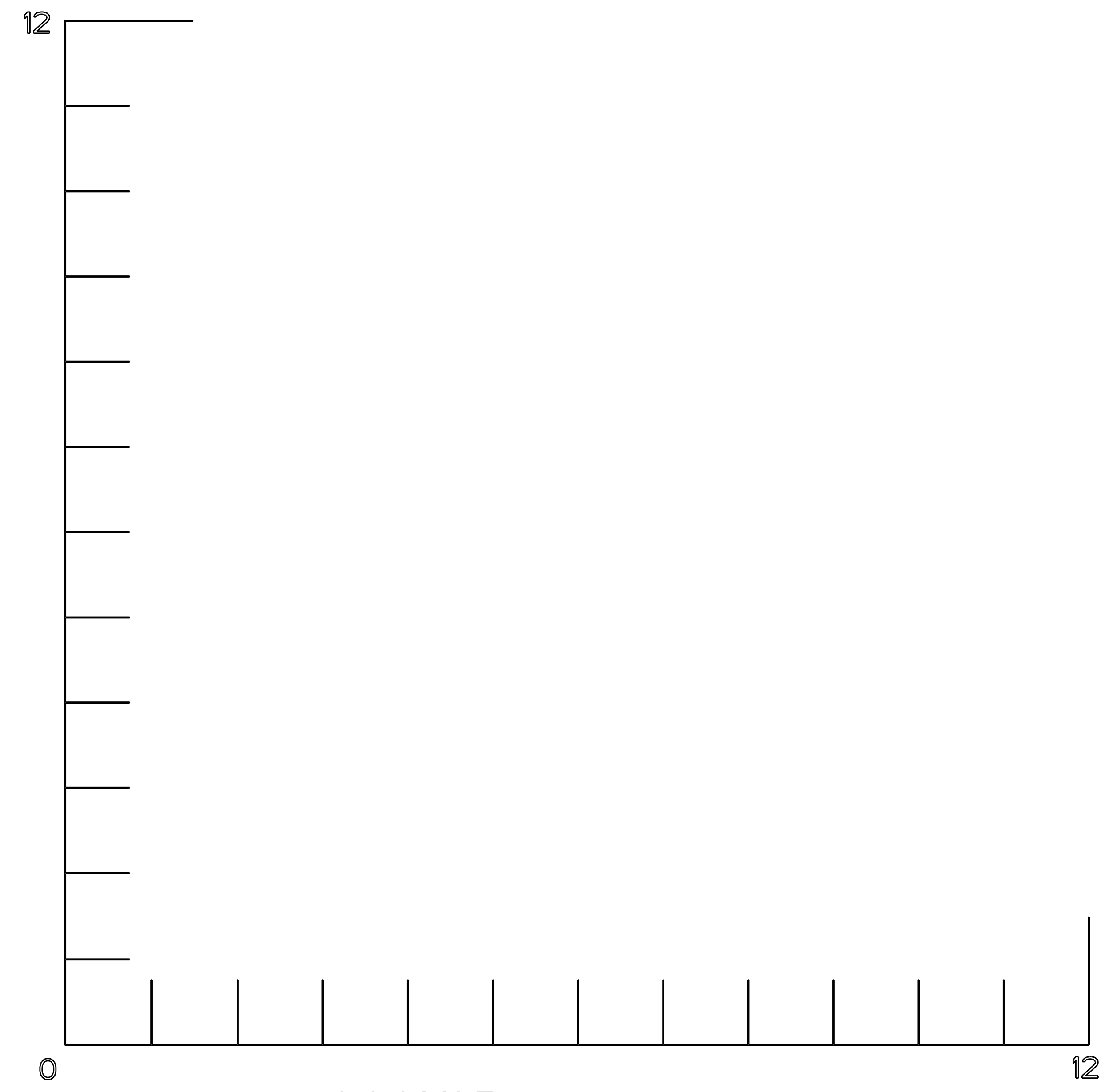
Oak Ridge National Laboratory managed for the DEPARTMENT OF ENERGY under U.S. GOVERNMENT contract DE-AC05-00OR22725 UT-BATTELLE, LLC. Oak Ridge, Tennessee
PROJECT NAME
NATIONAL COMPACT STELLARATOR EXPERIMENT
PORT 15 WINDING FORM SEAL BOOT ASSEMBLY
RELEASE LEVEL Fabrication
SE122-375



-2 FLAT PATTERN [4] [5]
SCALE 1.000



-3 FLAT PATTERN [4] [5]
SCALE 1.000



**1:1 SCALE
AT FULL SIZE** [4]

**RELEASED FOR
FABRICATION / INSTALLATION**
PPPL Drafting:

Oak Ridge National Laboratory managed for the DEPARTMENT OF ENERGY under U.S. GOVERNMENT contract DE-AC05-00OR22725 UT-BATTELLE, LLC, Oak Ridge, Tennessee <small>PROJECT NAME</small>									
UT-BATTELLE NATIONAL COMPACT STELLARATOR EXPERIMENT									
PORT 15 WINDING FORM SEAL BOOT ASSEMBLY									
VERSION NO. 5	PLANT ORNL	BLDG 5700	FL 3	SHT OF 2	TYPE A	CLASS U	RELEASE LEVEL Fabrication		
							SE122-375		REV 0

SE122-375