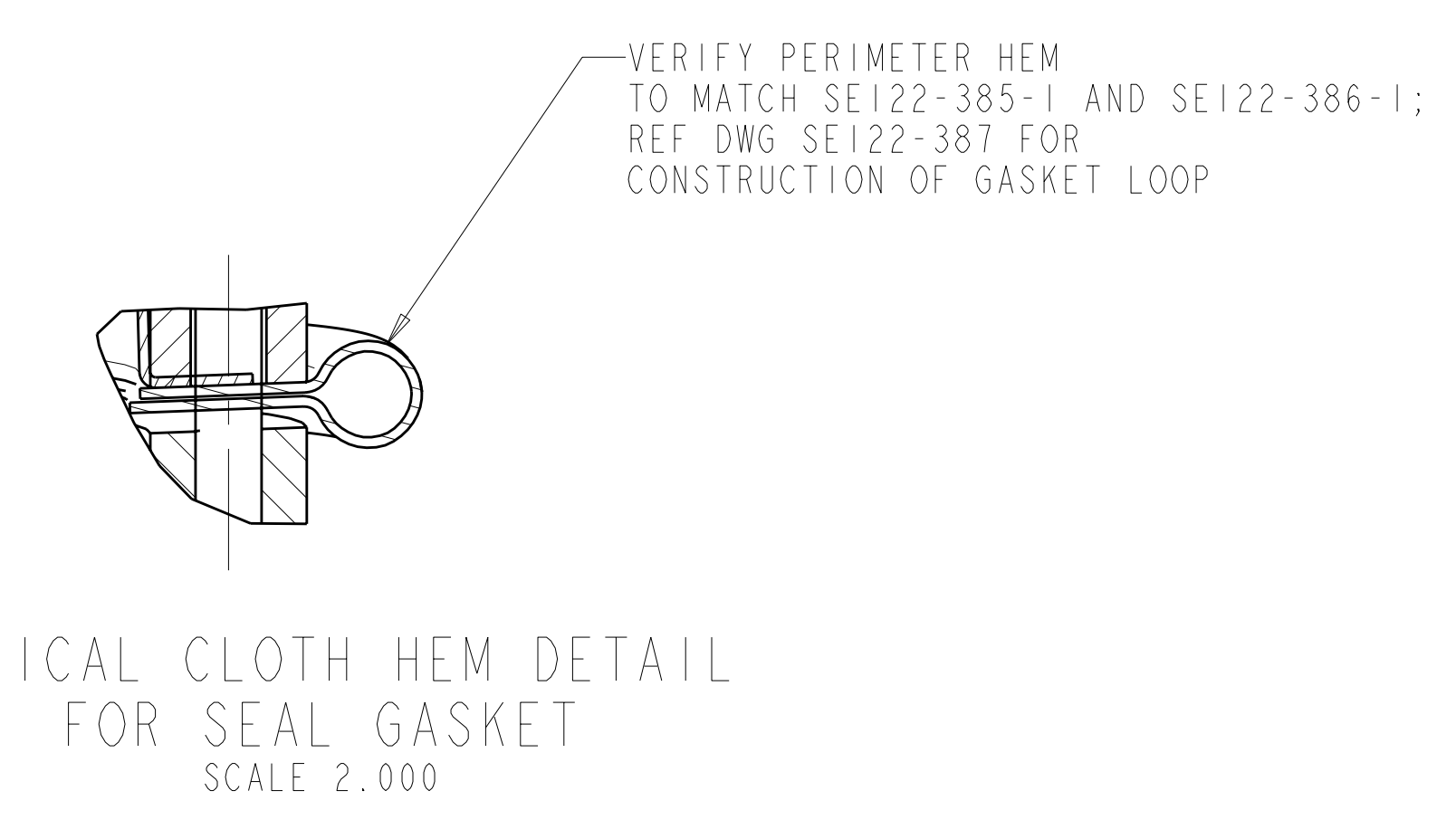
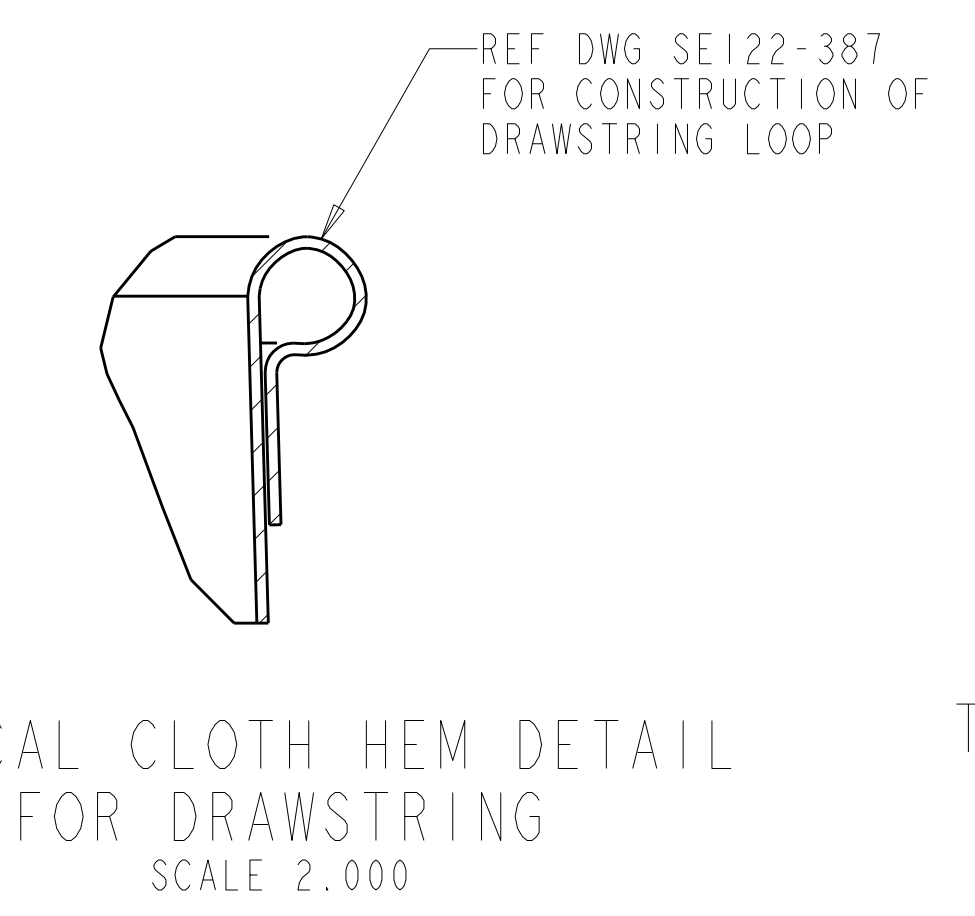
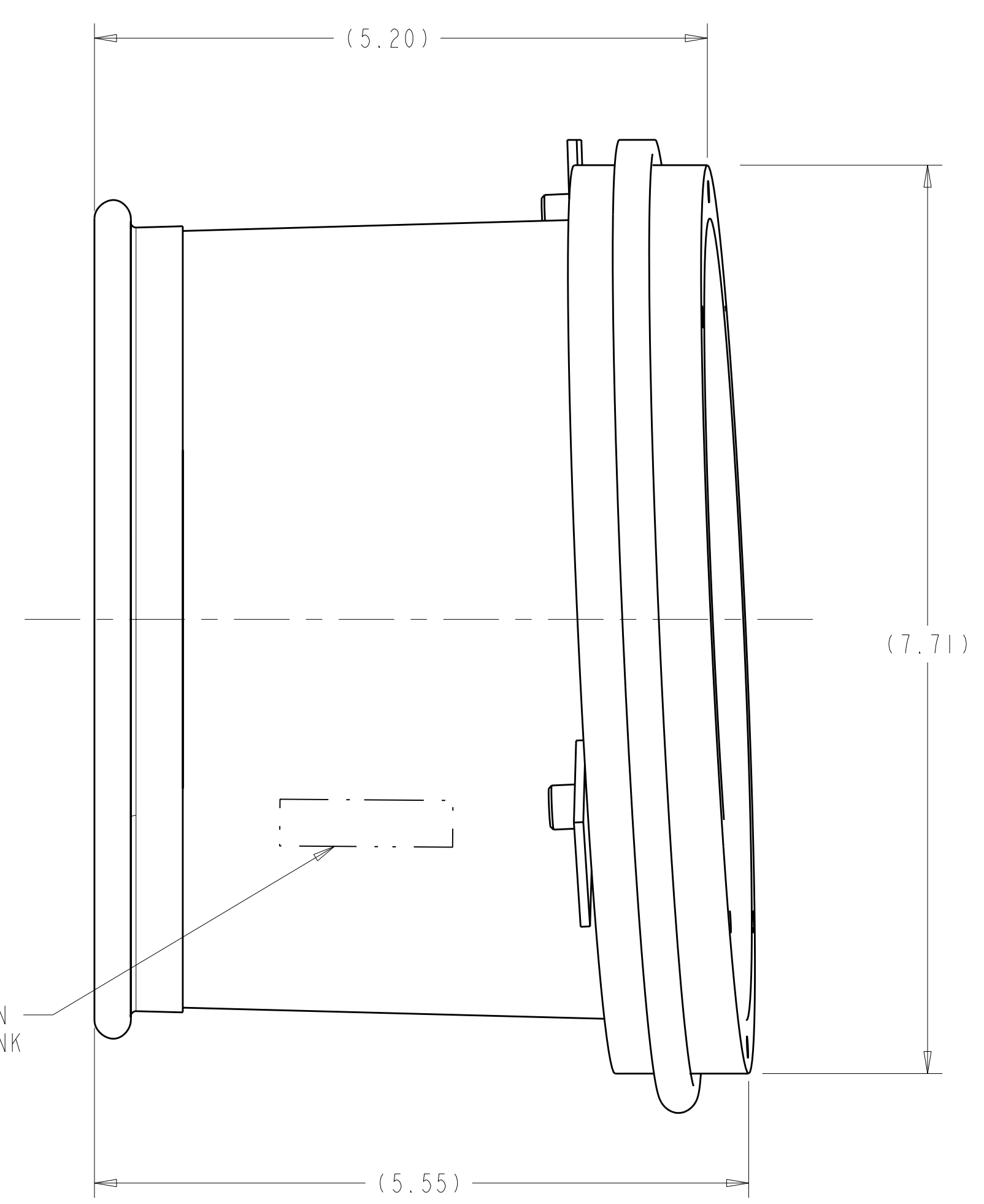
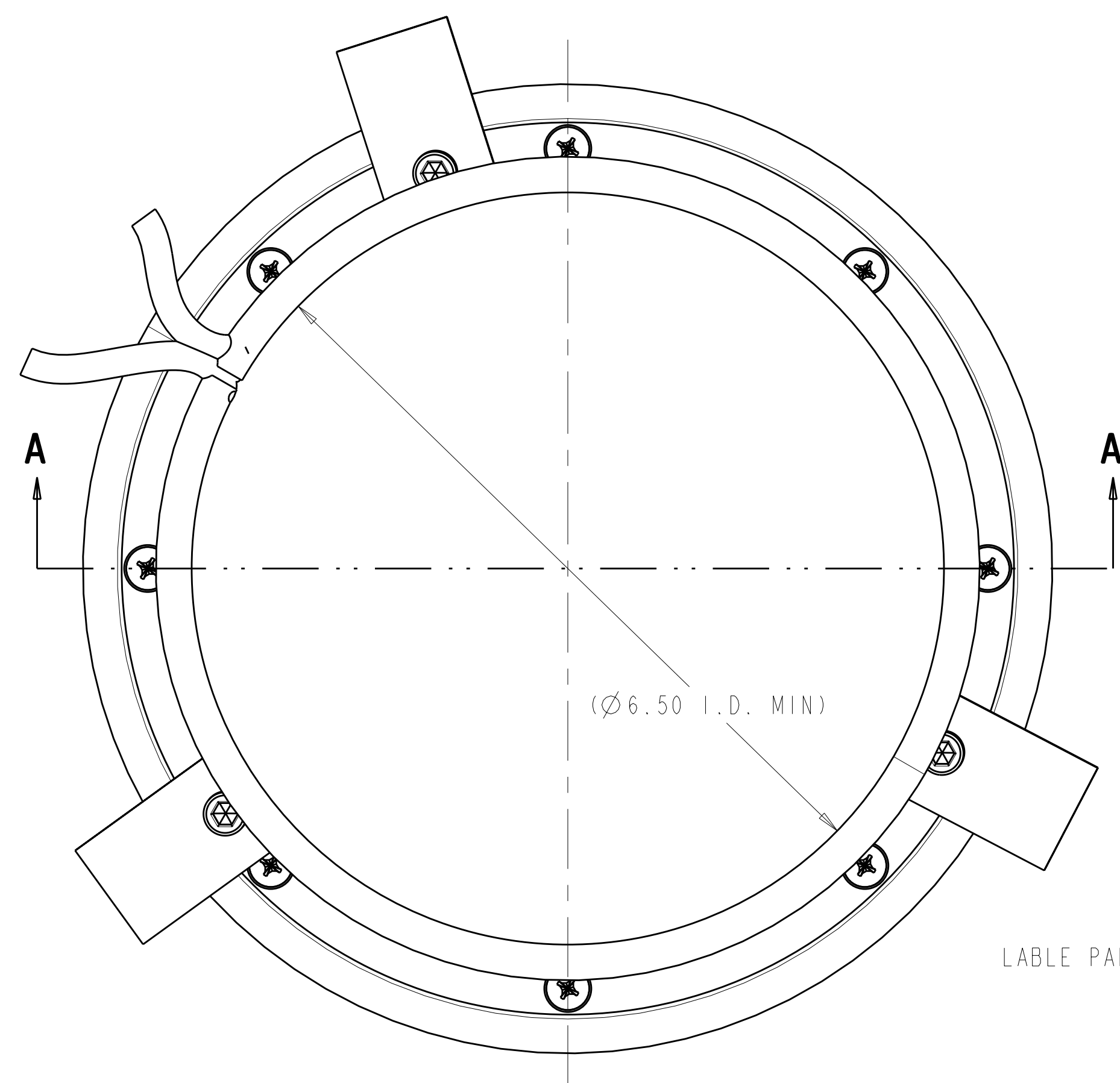
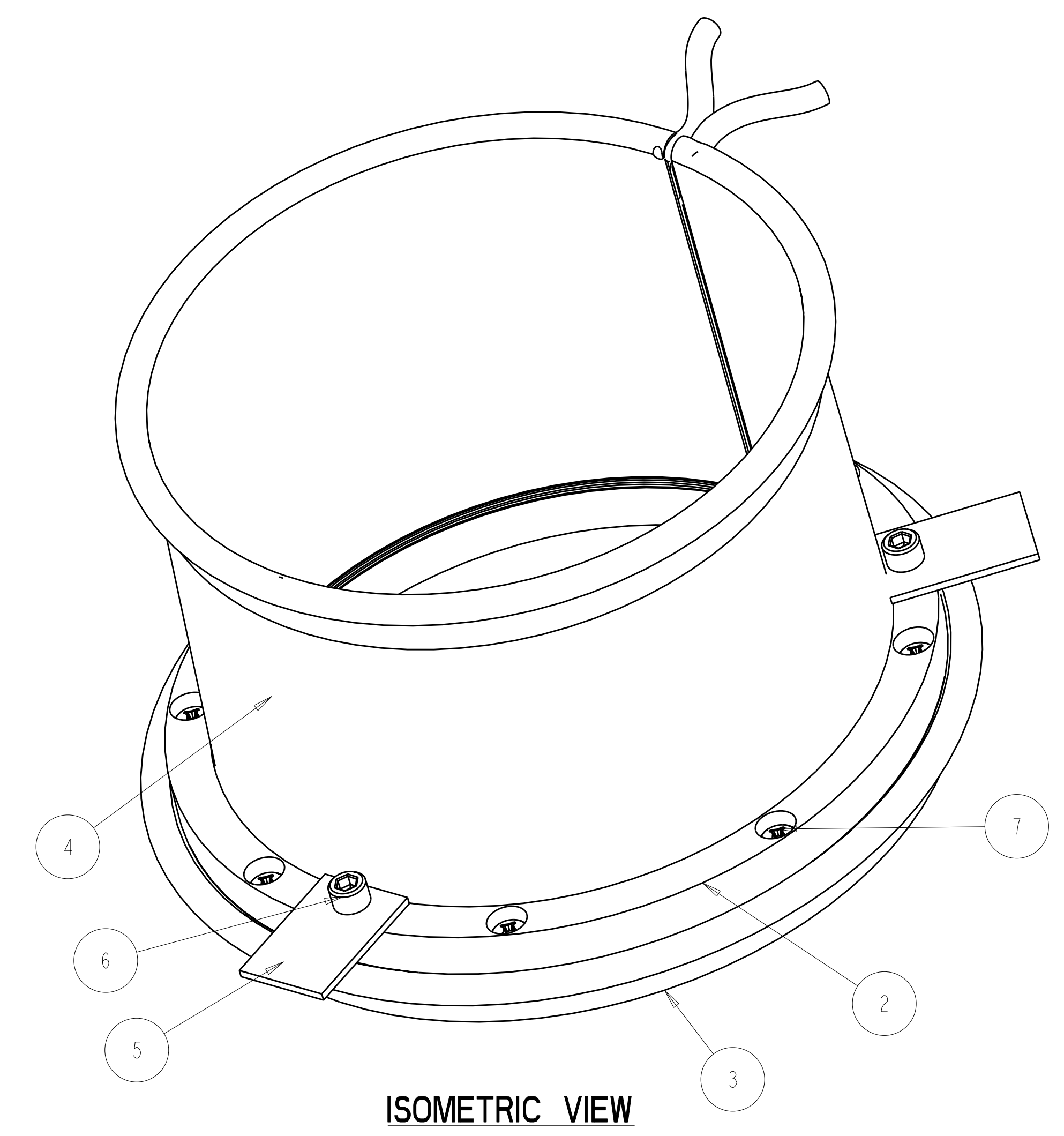
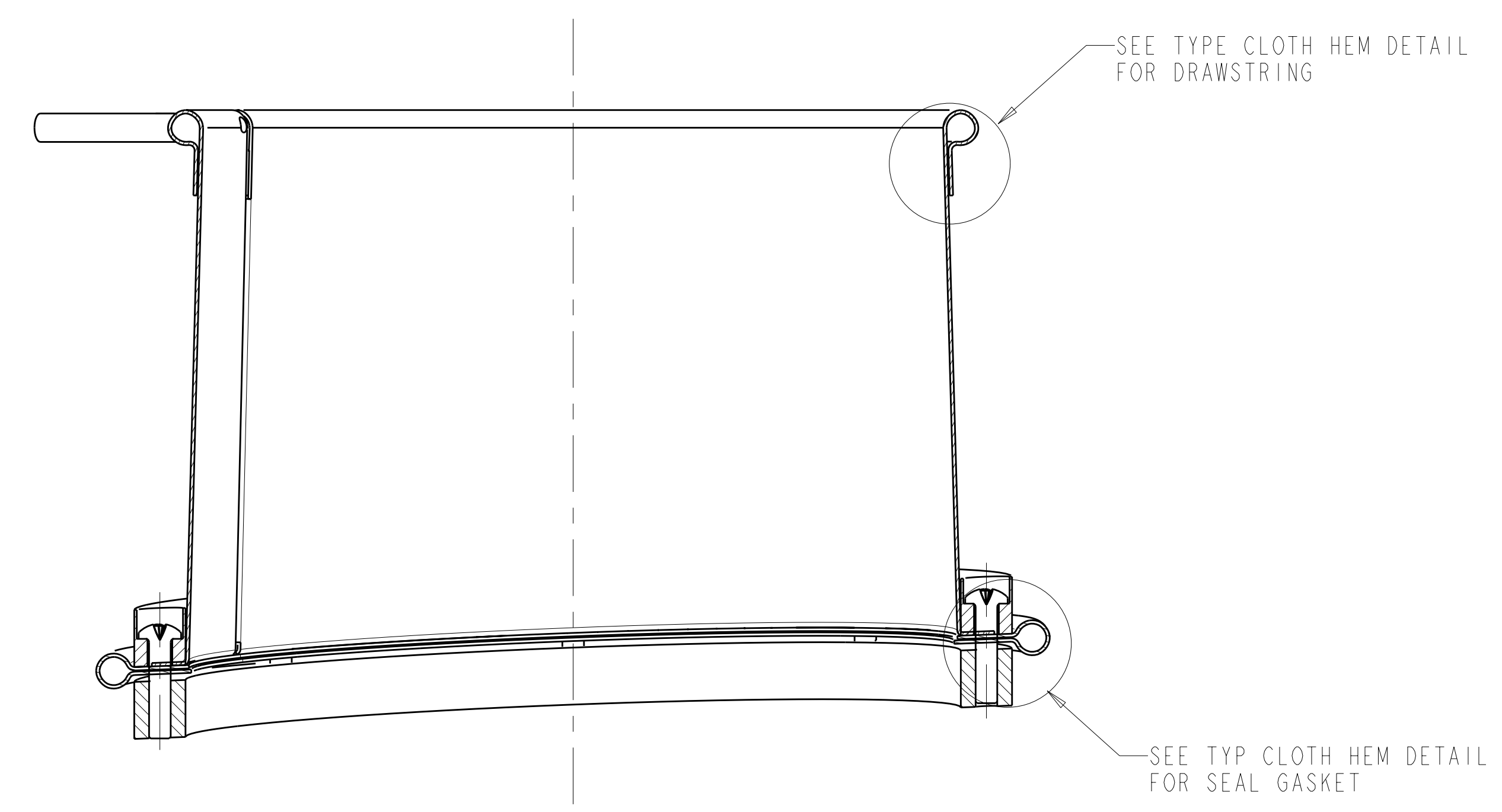
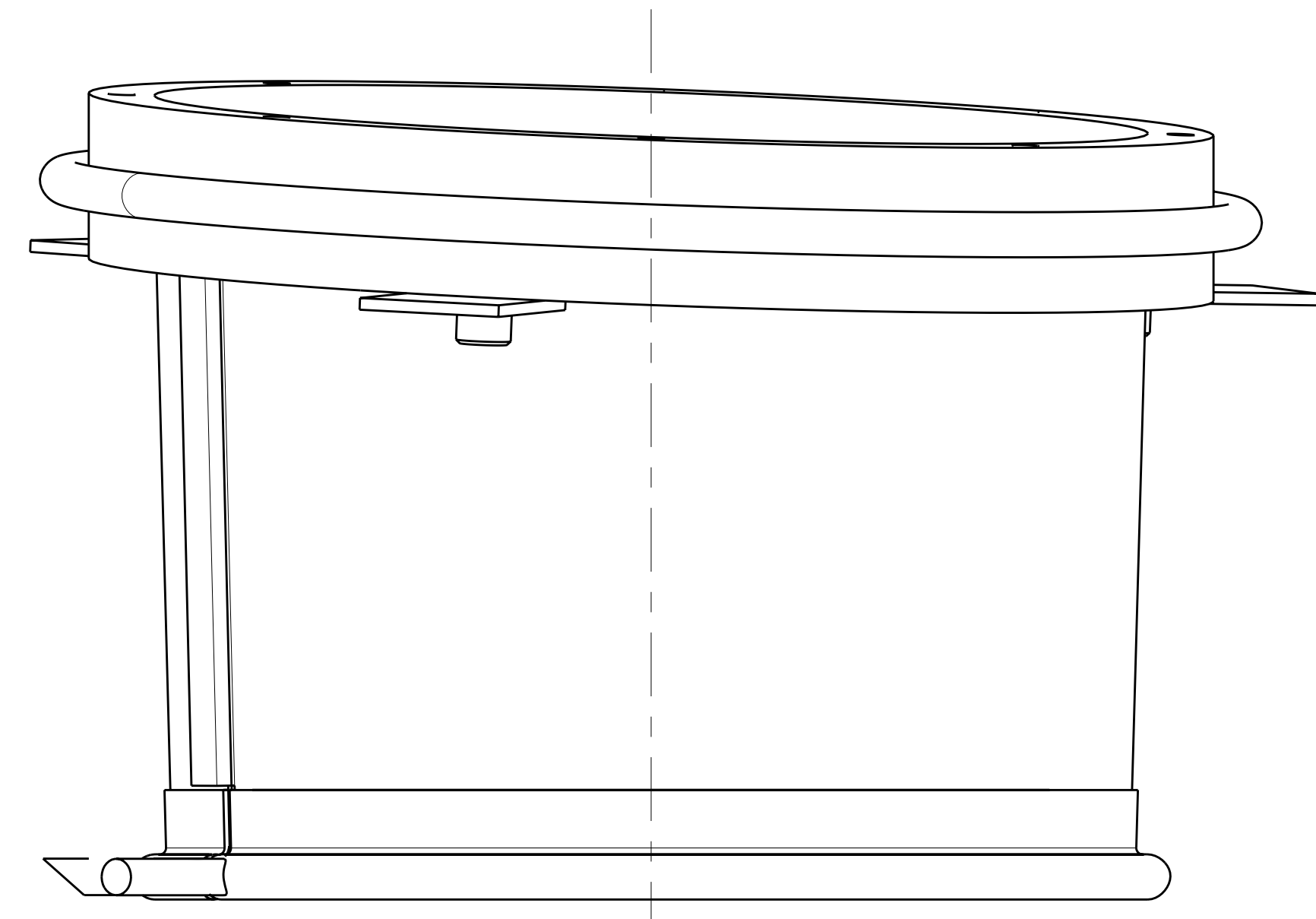


- NOTES
1. DRAWING PREPARED IN ACCORDANCE WITH ASME Y14.100-2004.
 2. INTERPRET DIMENSIONS AND TOLERANCES PER ASME Y14.5M-1994.
 3. DIMENSIONS ARE IN INCHES.



LABLE PART NUMBER AND REVISION USING PERMANENT INK

-1 PORT 8 WINDING FORM SEAL ASSEMBLY
SCALE 1.000

RELEASED FOR FABRICATION / INSTALLATION
PPPL Drafting:

REV	DESCRIPTION	BY	DATE	CHK	DEPT	DATE	PE	REQ	DATE	ORNL	DOE	DATE
0	ORIGINAL ISSUE	MTR	01/07	SP		01/07						

CAGE CODE	PART OR IDENTIFYING NO	NOMENCLATURE OR DESCRIPTION	MATERIAL	SPECIFICATION	FIND NO
8	94070A247	#10-24 UNC X 1.00 LG PAN HEAD PHILLIPS MACHINE SCREW	BRASS	MCMASTER CARR P.O. BOX 740100 ATLANTA, GA 30374-0100 (404) 346-7000 WWW.MCMASTER.COM	7
3	93465A537	1/4-20 UNC X .50 LG SHCS			6
3	SE122-399-1	PORT CLIP			5
1	SE122-387-1	PORT 8 WINDING FORM SEAL BOOT ASSEMBLY			4
1	SE122-386-1	PORT 8 WINDING FORM SEAL INNER PLATE			3
1	SE122-385-1	PORT 8 WINDING FORM SEAL OUTER PLATE			2
AR	-1	PORT 8 WINDING FORM SEAL ASSEMBLY			1

← CAGE CODE ← NEXT ASSEMBLY

NO REPRESENTATION OR WARRANTY, EXPRESSED OR IMPLIED, IS MADE AS TO THE ACCURACY, COMPLETENESS OR USEFULNESS OF THE INFORMATION OR STATEMENTS CONTAINED IN THESE DRAWINGS, OR THAT THE USE OR DISCLOSURE OF ANY INFORMATION, APPARATUS, METHOD OR PROCESS DISCLOSED IN THESE DRAWINGS MAY NOT INFRINGE PRIVATE RIGHTS OF OTHERS. NO LIABILITY IS ASSUMED WITH RESPECT TO THE USE OF, OR FOR DAMAGES RESULTING FROM THE USE OF, ANY INFORMATION, APPARATUS, METHOD OR PROCESS DISCLOSED IN THESE DRAWINGS. DRAWINGS MADE AVAILABLE FOR PURPOSES, AND ARE TO BE RETURNED UPON REQUEST OF THE FORWARDING CONTRACTOR.

P THIS DRAWING PRODUCED ON PRO-ENGINEER

SCALE NOTED		DES PL GORANSON 01/07	Oak Ridge National Laboratory managed for the DEPARTMENT OF ENERGY under U.S. GOVERNMENT contract DE-AC05-00OR22725 UT-BATTELLE, LLC. Oak Ridge, Tennessee	
TOLERANCES UNLESS OTHERWISE SPECIFIED		DRW MT BROWN 01/07	PROJECT NAME: NATIONAL COMPACT STELLARATOR EXPERIMENT	
FRACTIONS		CHK S PARSON 01/07	PORT 8 WINDING FORM SEAL ASSEMBLY	
XXX DECIMALS ±.01		SECT :	VERSION NO. 7	
XXX DECIMALS ±.005		DEPT :	PLANT ORNL	
ANGLES ±0°15'		FE :	BLDG 5700	
BREAK SHARP EDGES OR MAX		CR :	FL 3	
FINISH .125 UNLESS OTHERWISE SPECIFIED		PJ :	SHT 1	
		RD :	OF 1	
		PPPL DRFT J SIEGEL 01/07	TYPE I A	
			CLASS U	
			RELEASE LEVEL Fabrication	
			SE122-384	
			REV 0	