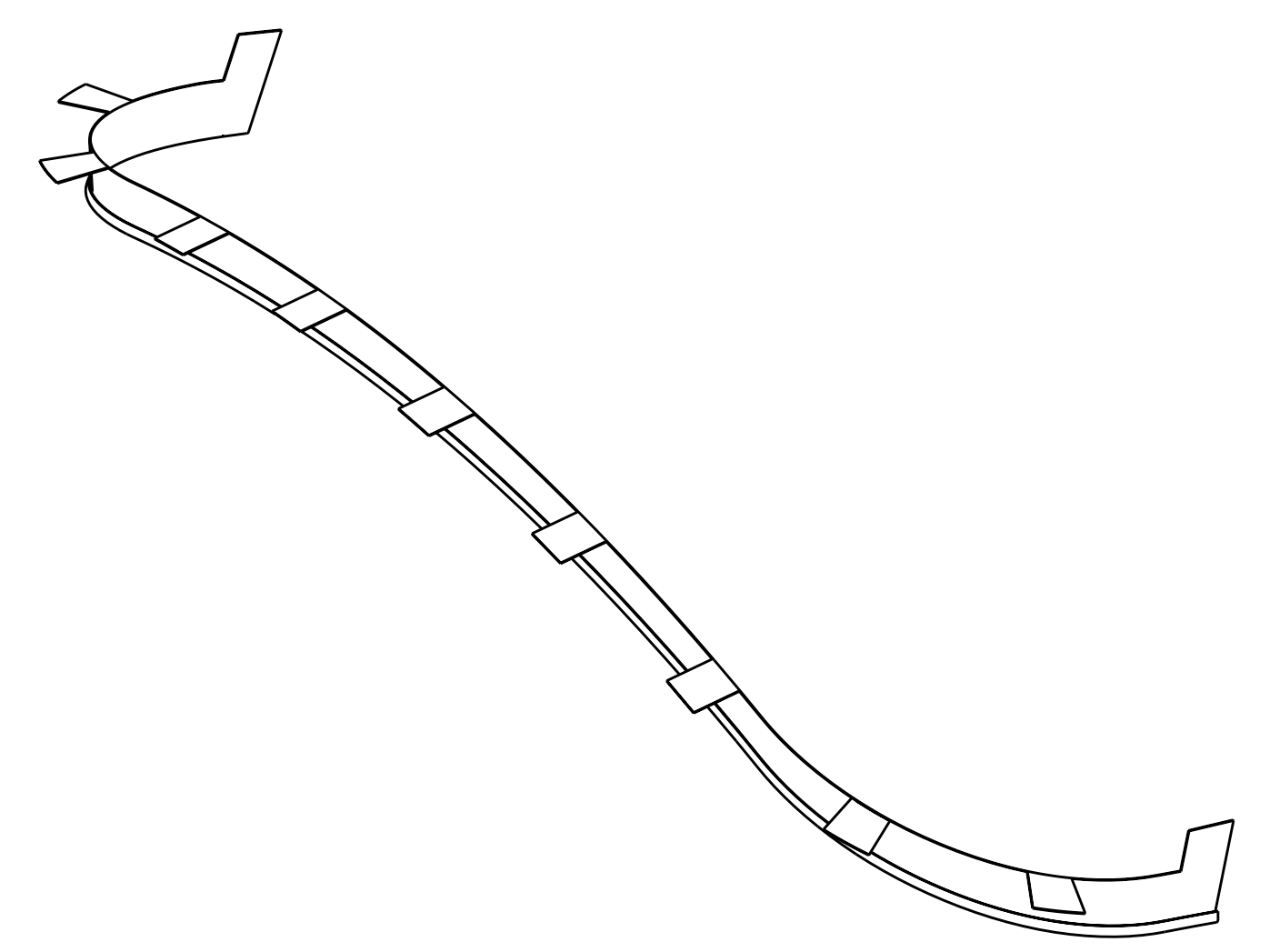
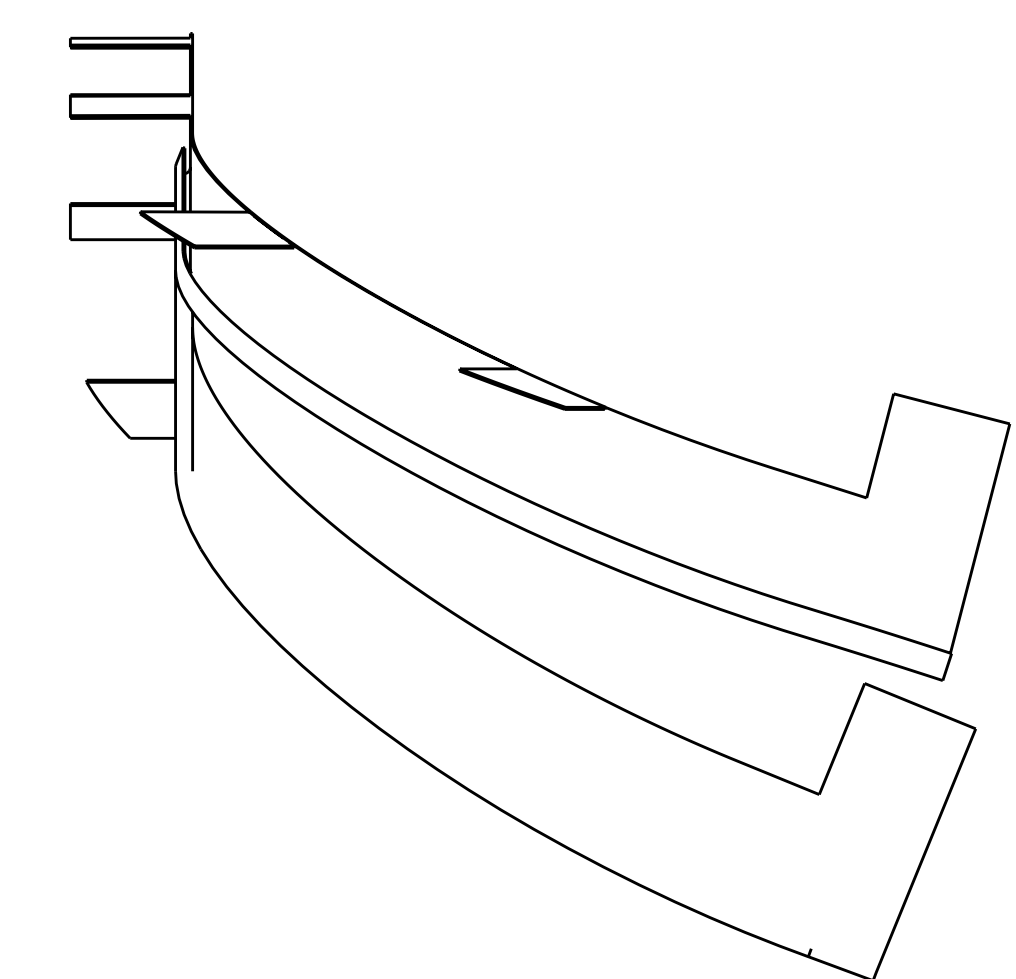
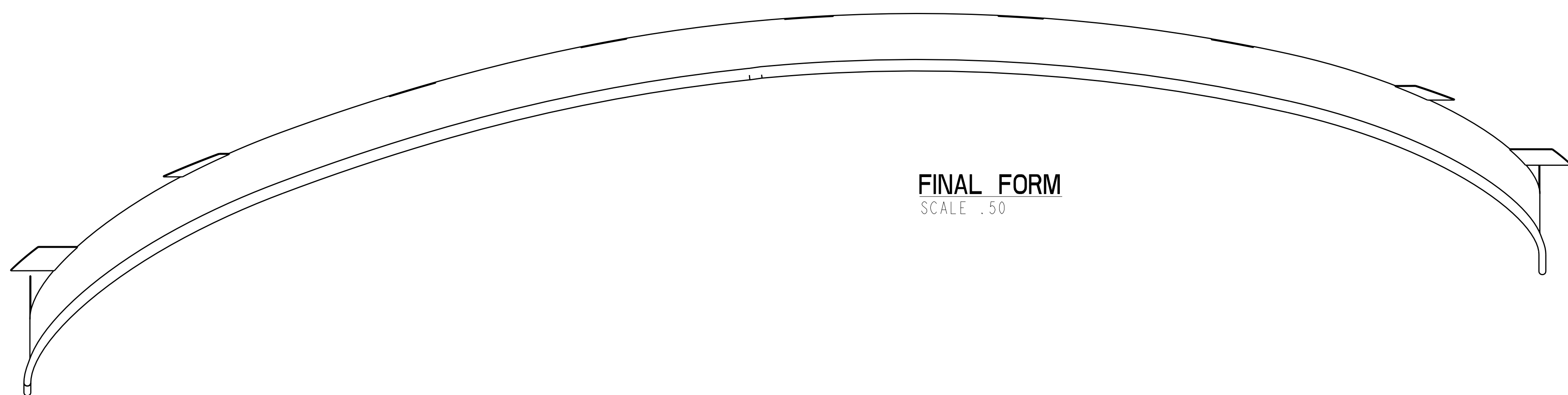
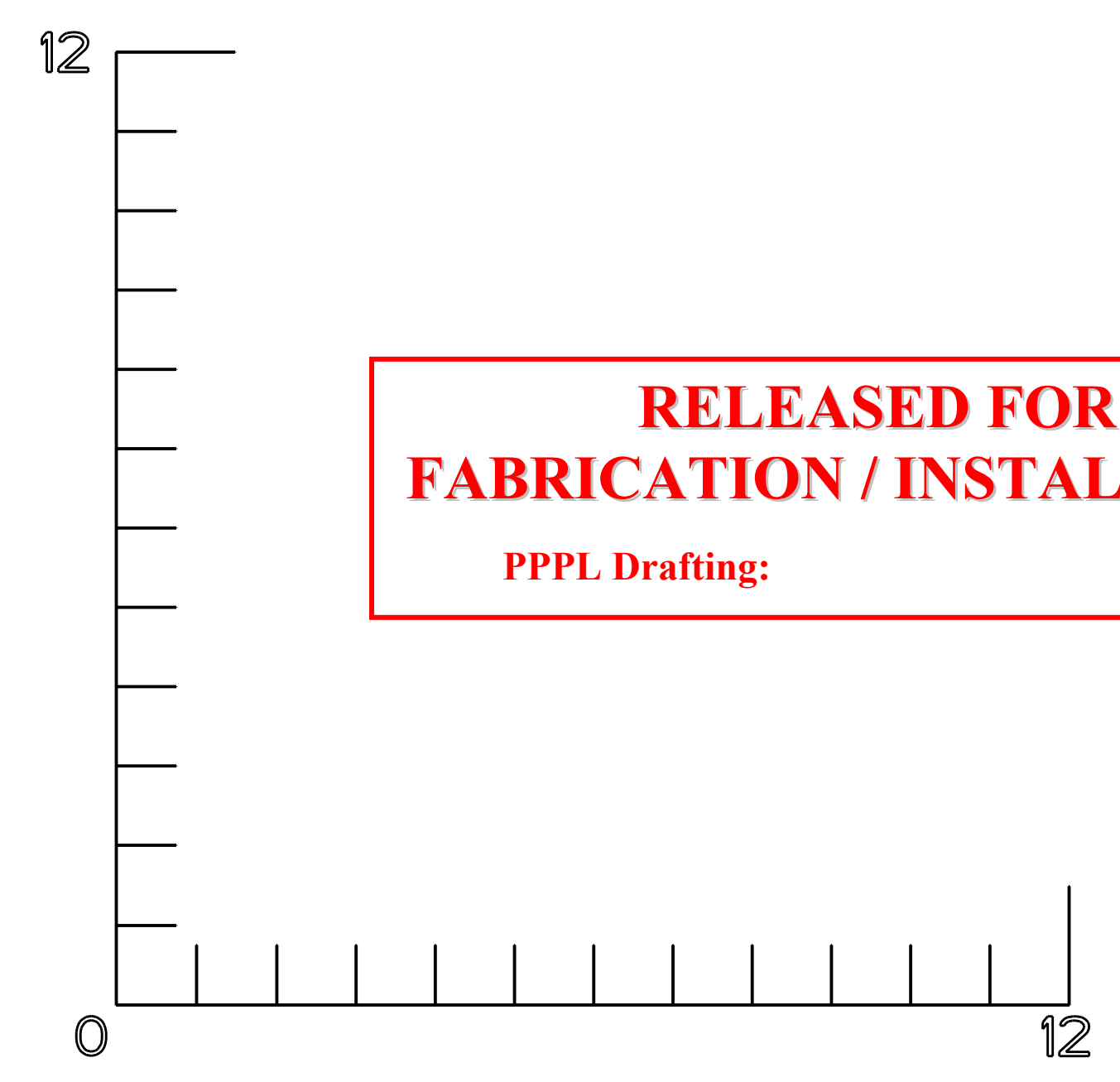
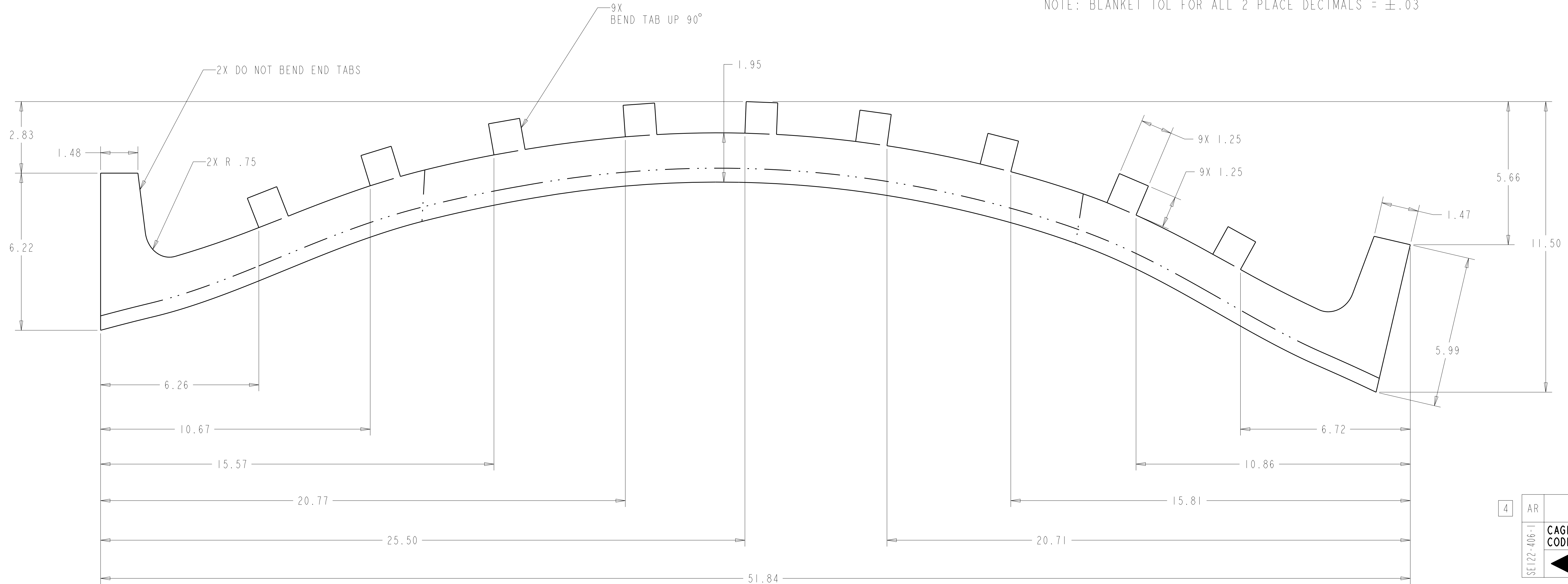


- NOTES
1. DRAWING PREPARED IN ACCORDANCE WITH ASME Y14.100-2004.
  2. INTERPRET DIMENSIONS AND TOLERANCES PER ASME Y14.5M-1994.
  3. DIMENSIONS ARE IN INCHES.
  4. FLAT PART TO BE MANUFACTURED FROM PRO/ENGINEER DATA FILE SE122-407-FLAT.PRT. DIMENSIONS SHOWN ARE FOR PART VERIFICATION ONLY.
  5. MAGNETIC PERMEABILITY NOT TO EXCEED 1.02 AS TESTED BY A SEVERN INDICATOR. AVAILABLE FROM: SEVERN ENGINEERING AUBURN, ALABAMA 36830 WWW.SEVERENGINEERING.COM



NOTE: BLANKET TOL FOR ALL 2 PLACE DECIMALS = ±.02



**RELEASED FOR FABRICATION / INSTALLATION**  
 PPPL Drafting

4	AR	-1	PORT 4 SEAL CUFF LEFT SIDE	24 GA (.02 THK) 316L SST	ASTM A240	I
	CAGE CODE	PART OR IDENTIFYING NO	NOMENCLATURE OR DESCRIPTION	MATERIAL	SPECIFICATION	FIND NO
		NEXT ASSEMBLY	PARTS LIST			

FLAT PATTERN AND BEND LINES 4 SCALE .50

-1 PORT 4 SEAL CUFF LEFT SIDE 4 SCALE .50

NO REPRESENTATION OR WARRANTY, EXPRESSED OR IMPLIED, IS MADE AS TO THE ACCURACY, COMPLETENESS OR USEFULNESS OF THE INFORMATION OR STATEMENTS CONTAINED IN THESE DRAWINGS, OR THAT THE USE OR DISCLOSURE OF ANY INFORMATION, APPARATUS, METHOD OR PROCESS DISCLOSED IN THESE DRAWINGS MAY NOT INFRINGE PRIVATE RIGHTS OF OTHERS. NO LIABILITY IS ASSUMED WITH RESPECT TO THE USE OF, OR FOR DAMAGES RESULTING FROM THE USE OF, ANY INFORMATION, APPARATUS, METHOD OR PROCESS DISCLOSED IN THESE DRAWINGS. DRAWINGS MADE AVAILABLE FOR INFORMATION TO BIDDER ARE NOT TO BE USED FOR OTHER PURPOSES, AND ARE TO BE RETURNED UPON REQUEST OF THE FORWARDING CONTRACTOR.

**P** THIS DRAWING PRODUCED ON PRO-ENGINEER

SCALE NOTED		DES P GORANSON 01/07	Oak Ridge National Laboratory managed for the DEPARTMENT OF ENERGY under U.S. GOVERNMENT contract DE-AC05-00OR22725 UT-BATTELLE, LLC. Oak Ridge, Tennessee			
TOLERANCES UNLESS OTHERWISE SPECIFIED		DRW MT BROWN 01/07	<b>UT-BATTELLE</b>			
FRACTIONS		CHK S PARSON 01/07	PROJECT NAME: NATIONAL COMPACT STELLARATOR EXPERIMENT			
XX DECIMALS ±.03		DEPT :	PORT 4 SEAL CUFF LEFT SIDE			
XXX DECIMALS ±.005		CR :	VERSION NO. 6			
ANGLES ±0°15'		PJ :	PLANT ORNL BLDG 5700 FL 3 SHT 1 OF 1 TYPE CLASS			
BREAK SHARP EDGES OR MAX		REV :	RELEASE LEVEL Fabrication			
FINISH .125 UNLESS OTHERWISE SPECIFIED		PPPL DRFT J SIEGEL 01/07	SE122-407			
REV		BY DATE CHK DEPT DATE PE REG DATE ORNL DOE DATE	REV 0			
0 ORIGINAL ISSUE		MTR 01/07 SP 01/07	DRAWING APPROVALS DATE			
REVISION OR ISSUE PURPOSE		REVISION APPROVAL				