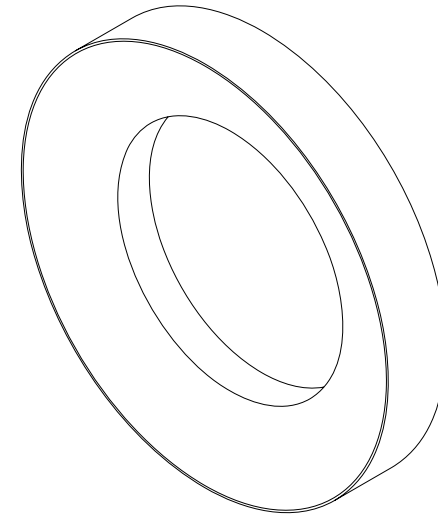
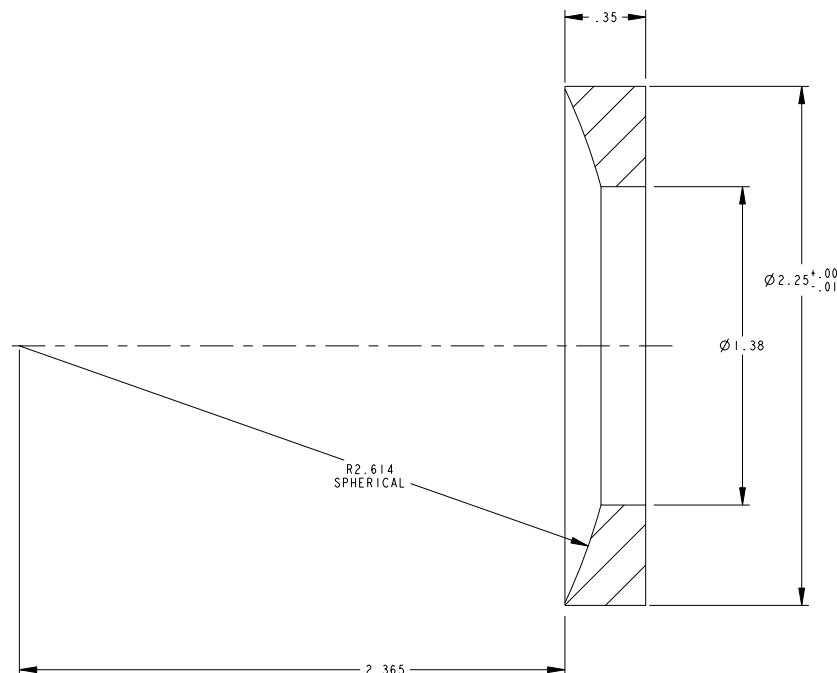
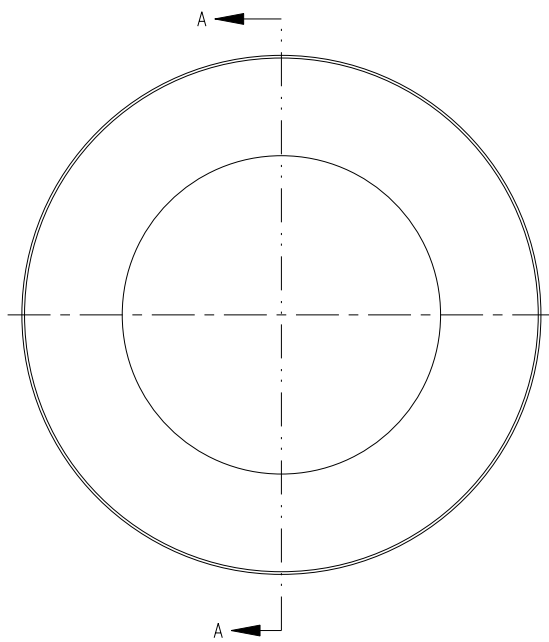


NOTES:

1. INTERPRET DIMENSIONS AND TOLERANCES PER ANSI Y14.5M
2. DIMENSIONS ARE IN INCHES
3. DIMENSIONS APPLY AT TEMPERATURE OF 20-30°C (68-86°F)
4. DRAWING DEPICTS FINAL MACHINED STATE OF PART DEFINED BY PRO/ENGINEER FILE SE124-033.PRT
5. APPROXIMATE WEIGHT= 0.19 lbs.



ISOMETRIC VIEW

SECTION A-A

**RELEASED FOR  
 FABRICATION / INSTALLATION**  
 PPPL Drafting:

SCALE 4:0

REV	DESCRIPTION	BY	DATE	CHK	DEPT	DATE	PE	REQ	DATE	ORNL	DOE	DATE
0	ORIGINAL ISSUE	GHJ	3/3/05									

REV	DESCRIPTION	BY	DATE	CHK	DEPT	DATE	PE	REQ	DATE	ORNL	DOE	DATE
0	ORIGINAL ISSUE	GHJ	3/3/05									

SCALE NOTED	DES PAUL MILLER 08-17-04	DRW PAUL MILLER 08-17-04	CHK J.M. RAY 04-07-05
TOLERANCES UNLESS OTHERWISE SPECIFIED	DEPT :	PE :	CR :
FRACTIONS	DEPT :	PE :	CR :
XX DECIMALS ±.01	DEPT :	PE :	CR :
XXX DECIMALS ±.005	DEPT :	PE :	CR :
ANGLES ±0°15'	DEPT :	PE :	CR :
BREAK SHARP EDGES .04 MAX	DEPT :	PE :	CR :
FINISH UNLESS OTHERWISE SPECIFIED	DEPT :	PE :	CR :
	DEPT :	PE :	CR :
	DEPT :	PE :	CR :
	DEPT :	PE :	CR :

Oak Ridge National Laboratory managed for the DEPARTMENT OF ENERGY under U.S. GOVERNMENT CONTRACT DE-AC05-00OR22725 UT-BATTELLE, LLC, Oak Ridge, Tennessee			
NATIONAL COMPACT STELLARATOR EXPERIMENT			
VERTICAL UPPER SUPPORT SPHERICAL BEARING DETAIL			
VERSION NO. II	PLANT X-10	BLDG 5700	FL 3
RELEASE LEVEL Fabrication	SE124-033		
			REV 0

NO REPRESENTATION OR WARRANTY, EXPRESSED OR IMPLIED, IS MADE AS TO THE ACCURACY, COMPLETENESS OR USEFULNESS OF THE INFORMATION OR STATEMENTS CONTAINED IN THESE DRAWINGS, OR THAT THE USE OR DISCLOSURE OF ANY INFORMATION, APPARATUS, METHOD OR PROCESS DISCLOSED IN THESE DRAWINGS MAY NOT INFRINGE PRIVATE RIGHTS OF OTHERS. NO LIABILITY IS ASSUMED WITH RESPECT TO THE USE OF, OR FOR DAMAGES RESULTING FROM THE USE OF, ANY INFORMATION, APPARATUS, METHOD OR PROCESS DISCLOSED IN THESE DRAWINGS. DRAWINGS AVAILABLE FOR INFORMATION TO BIDDERS ARE NOT TO BE USED FOR OTHER PURPOSES, AND ARE TO BE RETURNED UPON REQUEST OF THE FORWARDING CONTRACTOR.

**P** THIS DRAWING PRODUCED ON PRO-ENGINEER