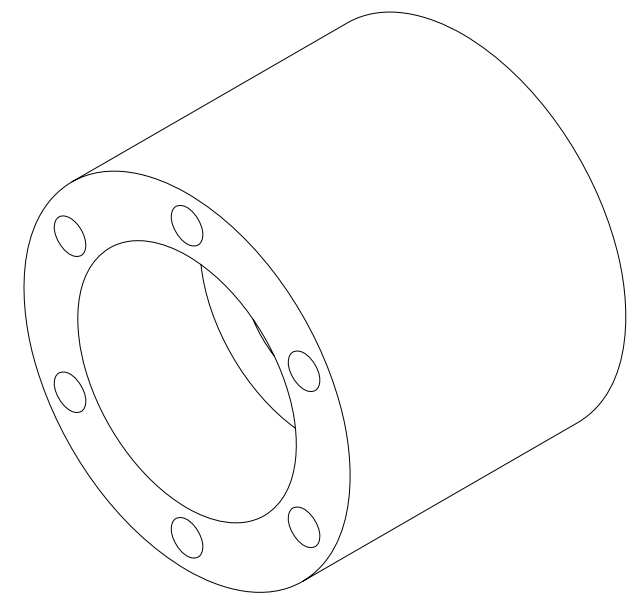
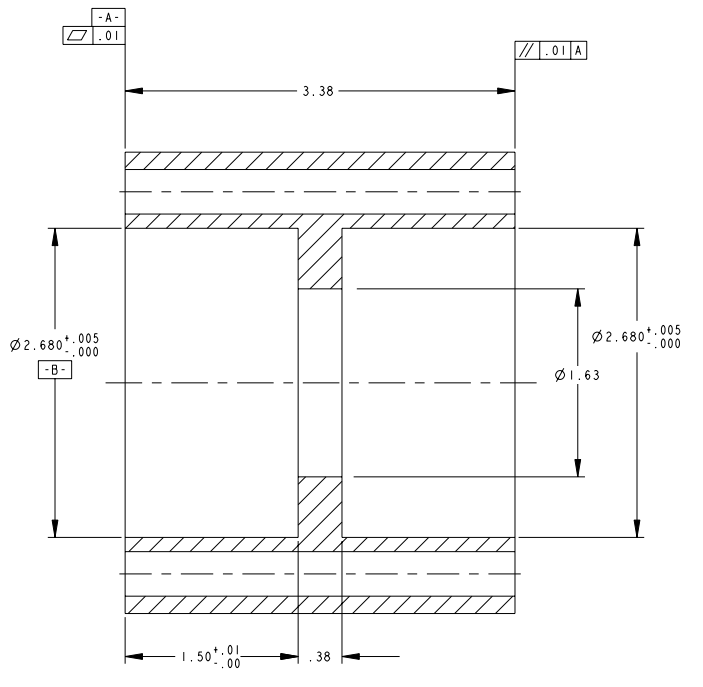
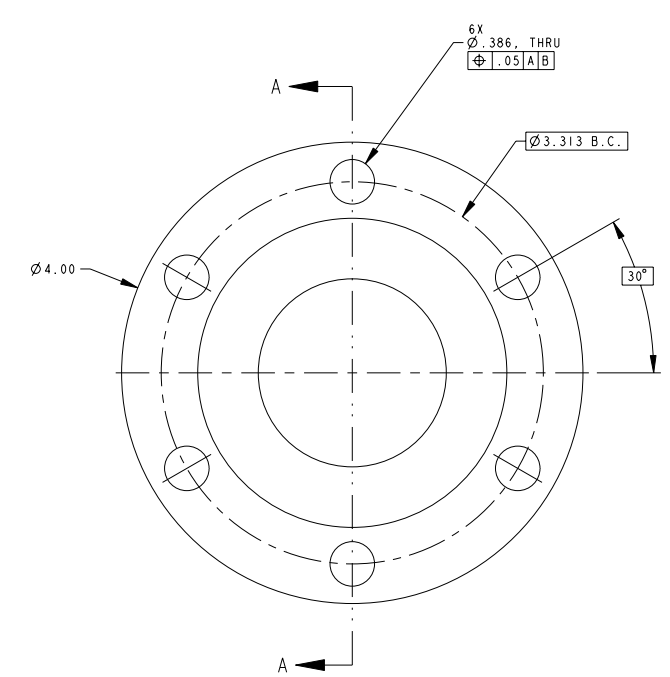


- NOTES:
1. INTERPRET DIMENSIONS AND TOLERANCES PER ANSI Y14.5M
  2. DIMENSIONS ARE IN INCHES
  3. DIMENSIONS APPLY AT TEMPERATURE OF 20-30°C (68-86°F)
  4. DRAWING DEPICTS FINAL MACHINED STATE OF PART DEFINED BY PRO/ENGINEER FILE SE124-035.PRT
  5. APPROXIMATE WEIGHT= 6.49 lbs.



ISOMETRIC VIEW

**RELEASED FOR  
 FABRICATION / INSTALLATION**  
 PPPL Drafting:

SECTION A-A

① SCALE: 2.00

REV	DESCRIPTION	BY	DATE	CHK	DEPT	DATE	PE	REQ	DATE	ORNL	DOE	DATE
0	ORIGINAL ISSUE	GHJ	3/3/05									

REV	DESCRIPTION	BY	DATE	CHK	DEPT	DATE	PE	REQ	DATE	ORNL	DOE	DATE
0	ORIGINAL ISSUE	GHJ	3/3/05									

NO REPRESENTATION OR WARRANTY, EXPRESSED OR IMPLIED, IS MADE AS TO THE ACCURACY, COMPLETENESS OR USEFULNESS OF THE INFORMATION OR STATEMENTS CONTAINED IN THESE DRAWINGS, OR THAT THE USE OR DISCLOSURE OF ANY INFORMATION, APPARATUS, METHOD OR PROCESS DISCLOSED IN THESE DRAWINGS MAY NOT INFRINGE PRIVATE RIGHTS OF OTHERS. NO LIABILITY IS ASSUMED WITH RESPECT TO THE USE OF, OR FOR DAMAGES RESULTING FROM THE USE OF, ANY INFORMATION, APPARATUS, METHOD OR PROCESS DISCLOSED IN THESE DRAWINGS. DRAWINGS MADE AVAILABLE FOR INFORMATION TO BIDDER ARE NOT TO BE USED FOR OTHER PURPOSES, AND ARE TO BE RETURNED UPON REQUEST OF THE FORWARDING CONTRACTOR.

**P** THIS DRAWING PRODUCED ON PRO-ENGINEER

SCALE	NOTED	DES	DATE
TOLERANCES UNLESS OTHERWISE SPECIFIED	PAUL MILLER	08-17-04	
FRACTIONS	PAUL MILLER	08-17-04	
XX DECIMALS ±.01	J.M. RAY	04-07-05	
XXX DECIMALS ±.005			
ANGLES ±0°15'			
BREAK SHARP EDGES .04 MAX			
FINISH UNLESS OTHERWISE SPECIFIED			

UT-BATTELLE		Oak Ridge National Laboratory	
managed for the DEPARTMENT OF ENERGY under U.S. GOVERNMENT CONTRACT DE-AC05-00OR22725		UT-BATTELLE, LLC, Oak Ridge, Tennessee	
NATIONAL COMPACT STELLARATOR EXPERIMENT			
VERTICAL LOWER SUPPORT INSERT			
DETAIL			
VERSION NO.	PLANT	BLDG	FL
15	X-10	5700	3
RELEASE LEVEL	Fabrication		SE124-035
REV	0		