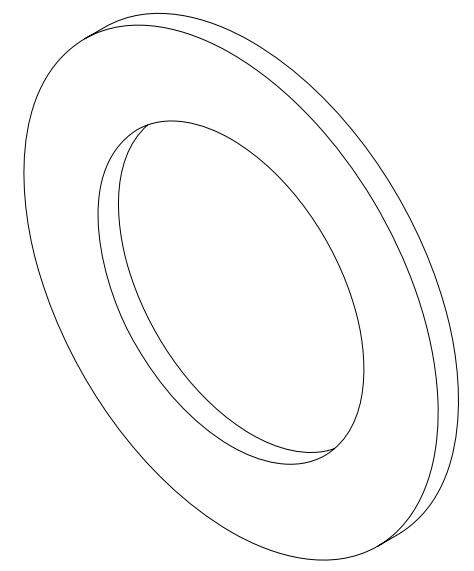
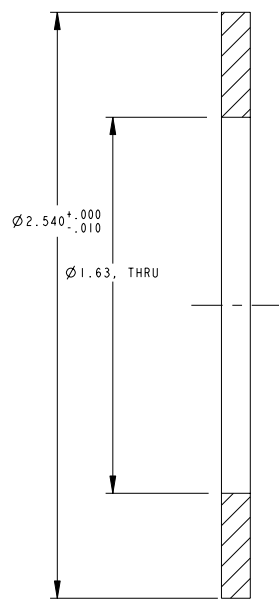
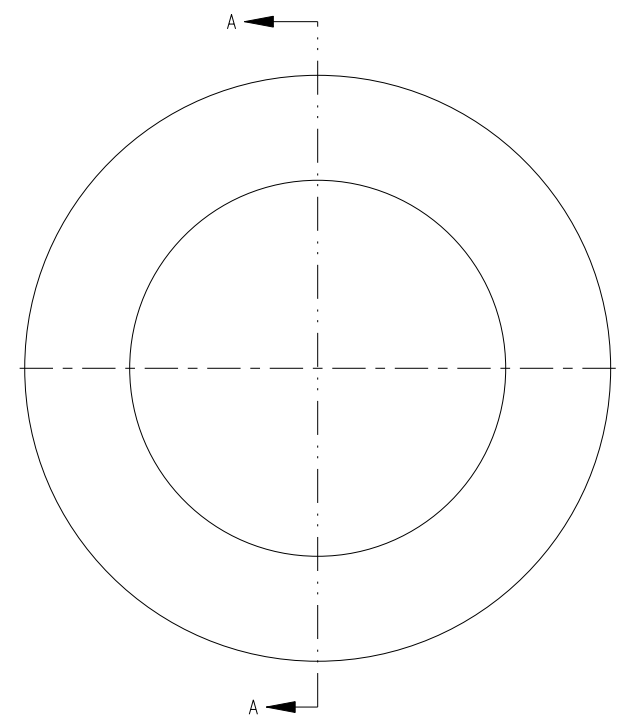
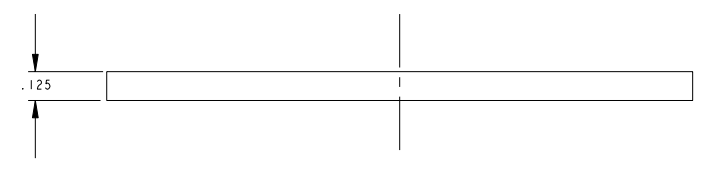


- NOTES:
1. INTERPRET DIMENSIONS AND TOLERANCES PER ANSI Y14.5M
 2. DIMENSIONS ARE IN INCHES
 3. DIMENSIONS APPLY AT TEMPERATURE OF 20-30°C (68-86°F)
 4. DRAWING DEPICTS FINAL MACHINED STATE OF PART DEFINED BY PRO/ENGINEER FILE SE124-039.PRT
 5. APPROXIMATE WEIGHT= 0.02 lbs.



ISOMETRIC VIEW
 SCALE 4.0

SCALE 4.0

SECTION A-A

**RELEASED FOR
 FABRICATION / INSTALLATION**
 PPPL Drafting:

REV	DESCRIPTION	BY	DATE	CHK	DEPT	DATE	PE	REQ	DATE	ORNL	DOE	DATE
0	ORIGINAL ISSUE	GHJ	3/3/05									

AR	- 1	VERTICAL LOWER SUPPORT INSULATING WASHER	G-1ICR	I
CAGE CODE	PART OR IDENTIFYING NO	NOMENCLATURE OR DESCRIPTION	MATERIAL	SPECIFICATION
SE124-034		NEXT ASSEMBLY		PARTS LIST

NO REPRESENTATION OR WARRANTY, EXPRESSED OR IMPLIED, IS MADE AS TO THE ACCURACY, COMPLETENESS OR USEFULNESS OF THE INFORMATION OR STATEMENTS CONTAINED IN THESE DRAWINGS, OR THAT THE USE OR DISCLOSURE OF ANY INFORMATION, APPARATUS, METHOD OR PROCESS DISCLOSED IN THESE DRAWINGS MAY NOT INFRINGE PRIVATE RIGHTS OF OTHERS. NO LIABILITY IS ASSUMED WITH RESPECT TO THE USE OF, OR FOR DAMAGES RESULTING FROM THE USE OF, ANY INFORMATION, APPARATUS, METHOD OR PROCESS DISCLOSED IN THESE DRAWINGS. DRAWINGS MADE AVAILABLE FOR INFORMATION TO BIDDER ARE NOT TO BE USED FOR OTHER PURPOSES, AND ARE TO BE RETURNED UPON REQUEST OF THE FORWARDING CONTRACTOR.

P THIS DRAWING PRODUCED ON PRO-ENGINEER

SCALE NOTED	DES PAUL MILLER 08-17-04	UT-BATTELLE	Oak Ridge National Laboratory
TOLERANCES UNLESS OTHERWISE SPECIFIED	DRW PAUL MILLER 08-17-04	UT-BATTELLE	managed for the DEPARTMENT OF ENERGY under U.S. GOVERNMENT CONTRACT DE-AC05-00OR22725
FRACTIONS	CHK J.M. RAY 04-07-05	NATIONAL COMPACT STELLARATOR EXPERIMENT	
XX DECIMALS ±.01	DEPT :	VERTICAL LOWER SUPPORT INSULATING WASHER DETAIL	
XXX DECIMALS ±.005	PE :	VERSION NO.	PLANT BLDG FL SHT OF TYPE CLASS
ANGLES ±0°15'	CR :	9	X-10 5700 3 1 1 S U
BREAK SHARP EDGES .04 MAX	PJ :	RELEASE LEVEL	SE124-039
FINISH (IF UNLESS OTHERWISE SPECIFIED)	REG :	Fabrication	REV 0
	PPPL DRFT :		
	DRAWING APPROVALS	DATE	