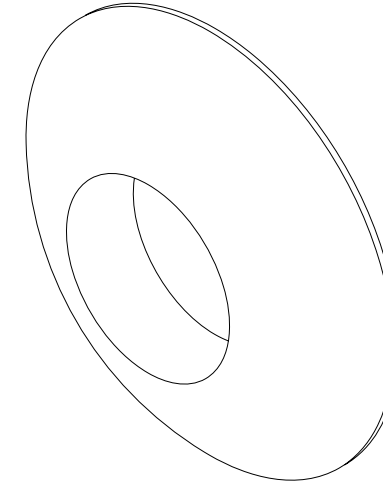
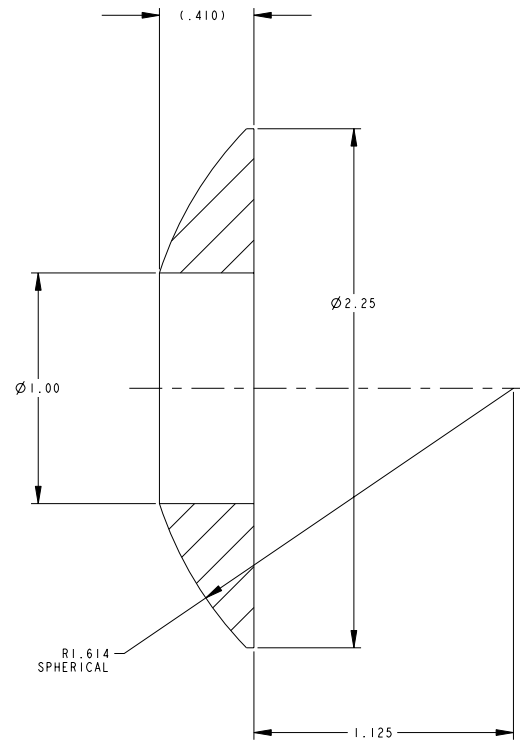
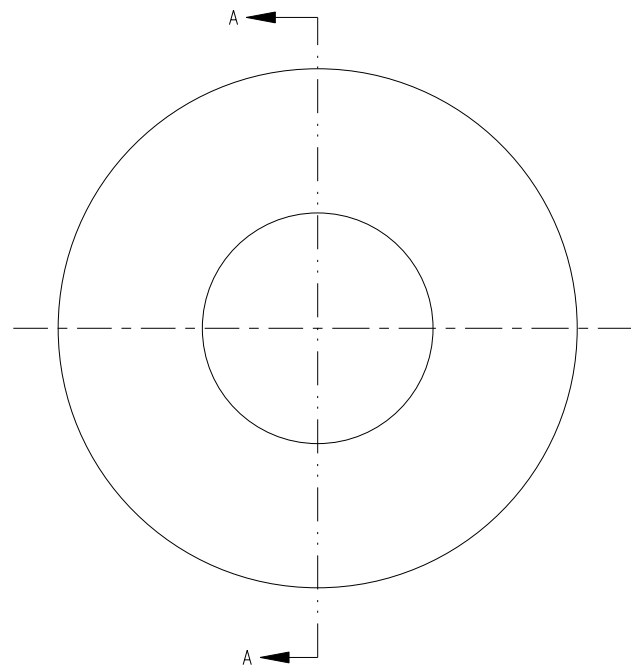
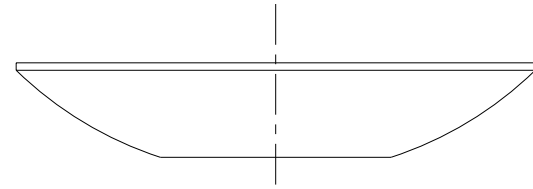


NOTES:

1. INTERPRET DIMENSIONS AND TOLERANCES PER ANSI Y14.5M
2. DIMENSIONS ARE IN INCHES
3. DIMENSIONS APPLY AT TEMPERATURE OF 20-30°C (68-86°F)
4. DRAWING DEPICTS FINAL MACHINED STATE OF PART DEFINED BY PRO/ENGINEER FILE SE124-068.PRT
5. APPROXIMATE WEIGHT= 0.05 lbs



ISOMETRIC VIEW
SCALE 4.0

SECTION A-A

SCALE 4.0

RELEASED FOR
FABRICATION / INSTALLATION
PPPL Drafting:

REV	DESCRIPTION	BY	DATE	CHK	DEPT	DATE	PE	REQ	DATE	ORNL	DOE	DATE
0	ORIGINAL ISSUE	GHJ	3/3/05									

AR	-1	VERTICAL UPPER SUPPORT INSULATION SPHERICAL WASHER	G-11CR	I
CAGE CODE	PART OR IDENTIFYING NO	NOMENCLATURE OR DESCRIPTION	MATERIAL	SPECIFICATION
SE124-051	← NEXT ASSEMBLY	PARTS LIST		

DES	PAUL MILLER	08-17-04
DRW	PAUL MILLER	08-17-04
CHK	J. M. RAY	04-07-05
SECT		
DEPT		
PE		
CR		
PJ		
REG		
PPPL DRAFT		
DRAWING APPROVALS	DATE	

Oak Ridge National Laboratory			
managed for the DEPARTMENT OF ENERGY under			
U.S. GOVERNMENT CONTRACT DE-AC05-00OR22725			
UT-BATTELLE, LLC, Oak Ridge, Tennessee			
PROJECT NAME			
NATIONAL COMPACT STELLARATOR EXPERIMENT			
VERTICAL UPPER SUPPORT			
INSULATION SPHERICAL WASHER			
DETAIL			
VERSION NO.	PLANT	BLDG	FL SHT OF TYPE CLASS
7	X-10	5700	3 1 1 S U
RELEASE LEVEL		SE124-068	
Fabrication		REV 0	

NO REPRESENTATION OR WARRANTY, EXPRESSED OR IMPLIED, IS MADE AS TO THE ACCURACY, COMPLETENESS OR USEFULNESS OF THE INFORMATION OR STATEMENTS CONTAINED IN THESE DRAWINGS, OR THAT THE USE OR DISCLOSURE OF ANY INFORMATION, APPARATUS, METHOD OR PROCESS DISCLOSED IN THESE DRAWINGS MAY NOT INFRINGE PRIVATE RIGHTS OF OTHERS. NO LIABILITY IS ASSUMED WITH RESPECT TO THE USE OF, OR FOR DAMAGES RESULTING FROM THE USE OF, ANY INFORMATION, APPARATUS, METHOD OR PROCESS DISCLOSED IN THESE DRAWINGS. DRAWINGS MADE AVAILABLE FOR INFORMATION TO BIDDERS ARE NOT TO BE USED FOR OTHER PURPOSES, AND ARE TO BE RETURNED UPON REQUEST OF THE FORWARDING CONTRACTOR.

THIS DRAWING PRODUCED ON PRO-ENGINEER