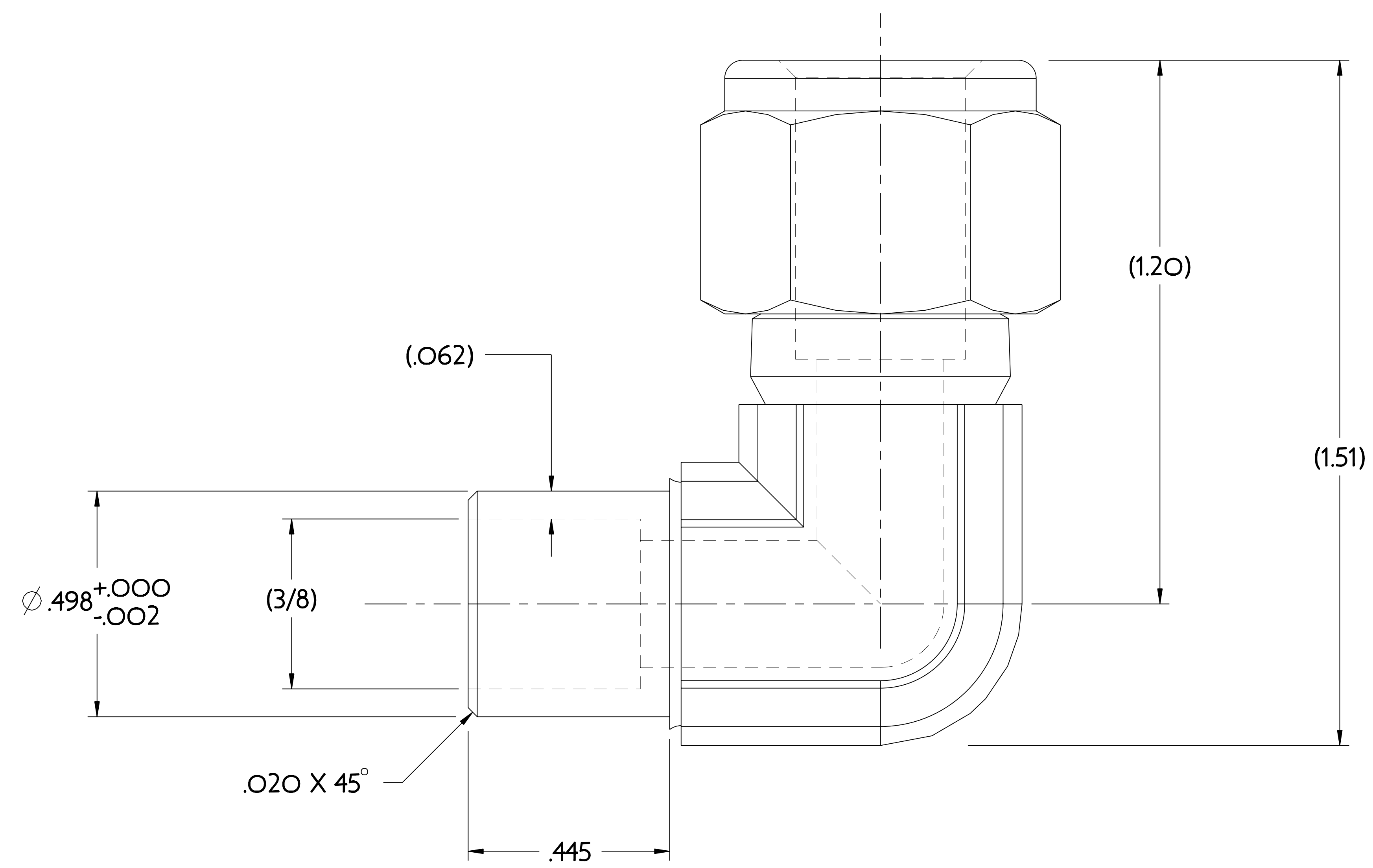
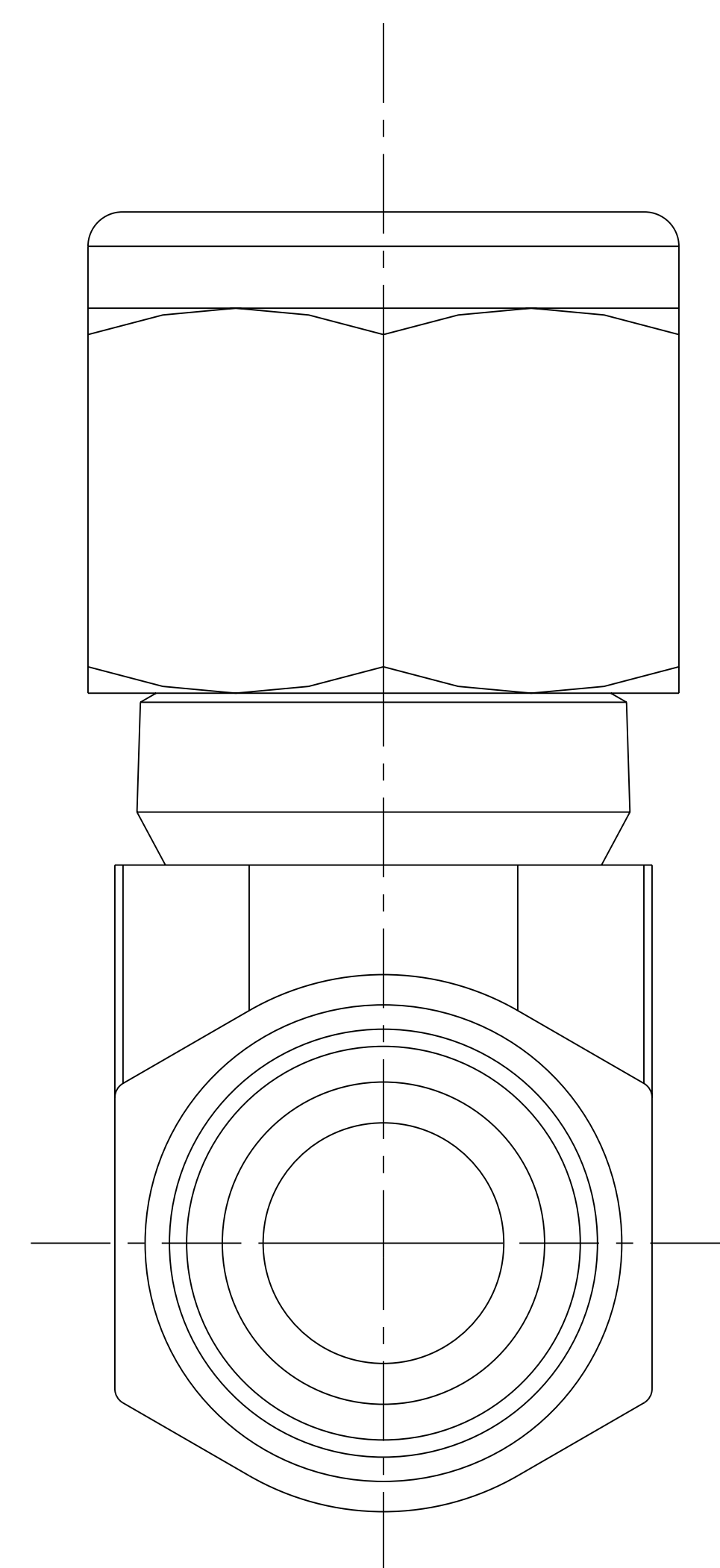


NO.	REVISION	BY	CH	SUP	APPROVED	DATE

**NOTE:**

MODIFY SWAGelok FITTING #B-600-9-6W AS SHOWN.



**RELEASED FOR  
FABRICATION / INSTALLATION**  
PPPL Drafting:

**RELEASE LEVEL: Fabrication**  
**DWG VERSION NO:**

WEIGHT  
0.1 lbs  
MODEL NAME  
SE131-013  
WELDING  
ENGINEER

PART NO.	DRAWING NO	NOMENCLATURE OR DESCRIPTION	MATERIAL	QTY REOD	
1	SE131-013	SWAGelok #B-600-9-6W 3/8 TUBE/WELD FITTING	BRASS	36	
PARTS LIST					
COMPUTER GENERATED DRAWING MANUAL CHANGES NOT PERMITTED Pro E		CENTRAL FILES: UNLESS OTHERWISE SPECIFIED DIMENSIONS ARE IN INCHES MACHINE SURFACES BREAK SHARP EDGES .005/.020	PRINCETON PLASMA PHYSICS LABORATORY NATIONAL COMPACT STELLARATOR EXPERIMENT STELLARATOR CORE CONVENTIONAL COILS TF COIL COOLANT TUBE FITTING DETAIL		
DO NOT VERIFY INFORMATION BY SCALING DRAWING		TOLERANCES NON-CUMULATIVE DECIMAL-INCH FRACTIONS .XX +/- .030 .XXX +/- .005 ANGULAR +/- .15	DSN: J. RUSHINSKI CHK: M. KALISH/B. PAUL ENGR: M. KALISH SUPV: J. SIEGEL	8/12/05 8/12/05 8/12/05 8/12/05	
NEXT ASSEMBLY		DRAWING NO: <b>SE131-013</b>			
		SHEET 1 OF 1 REV 0			

NCSX-SE131-013