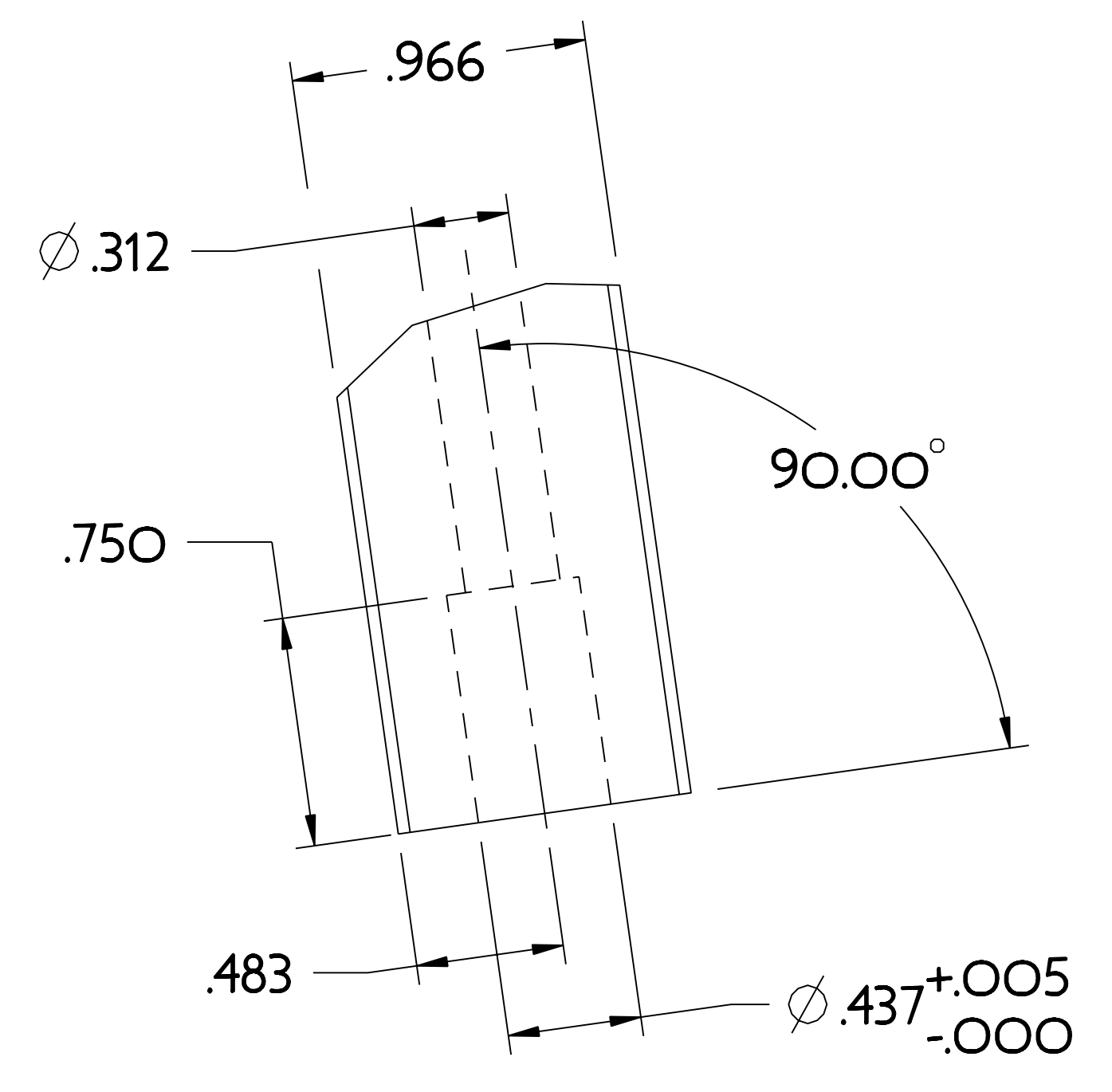
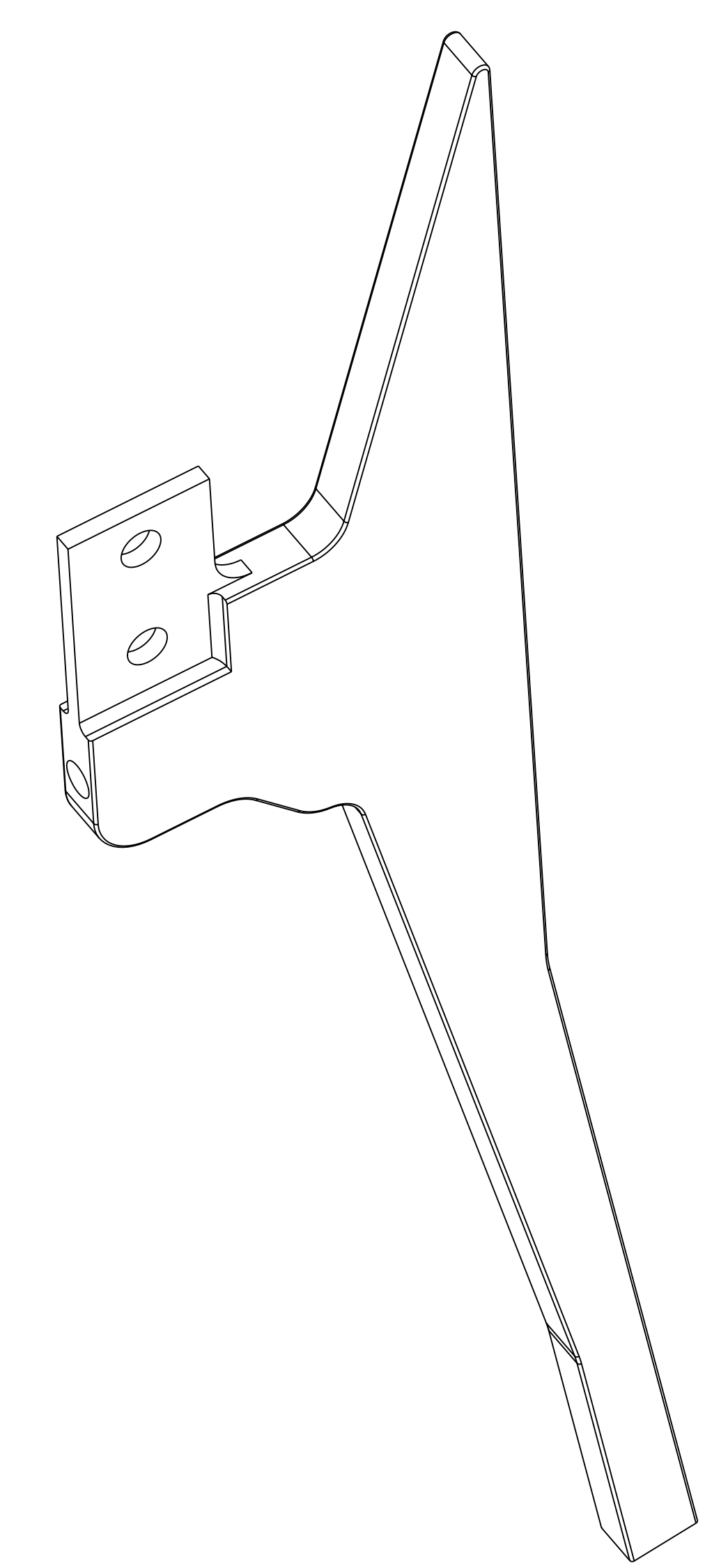
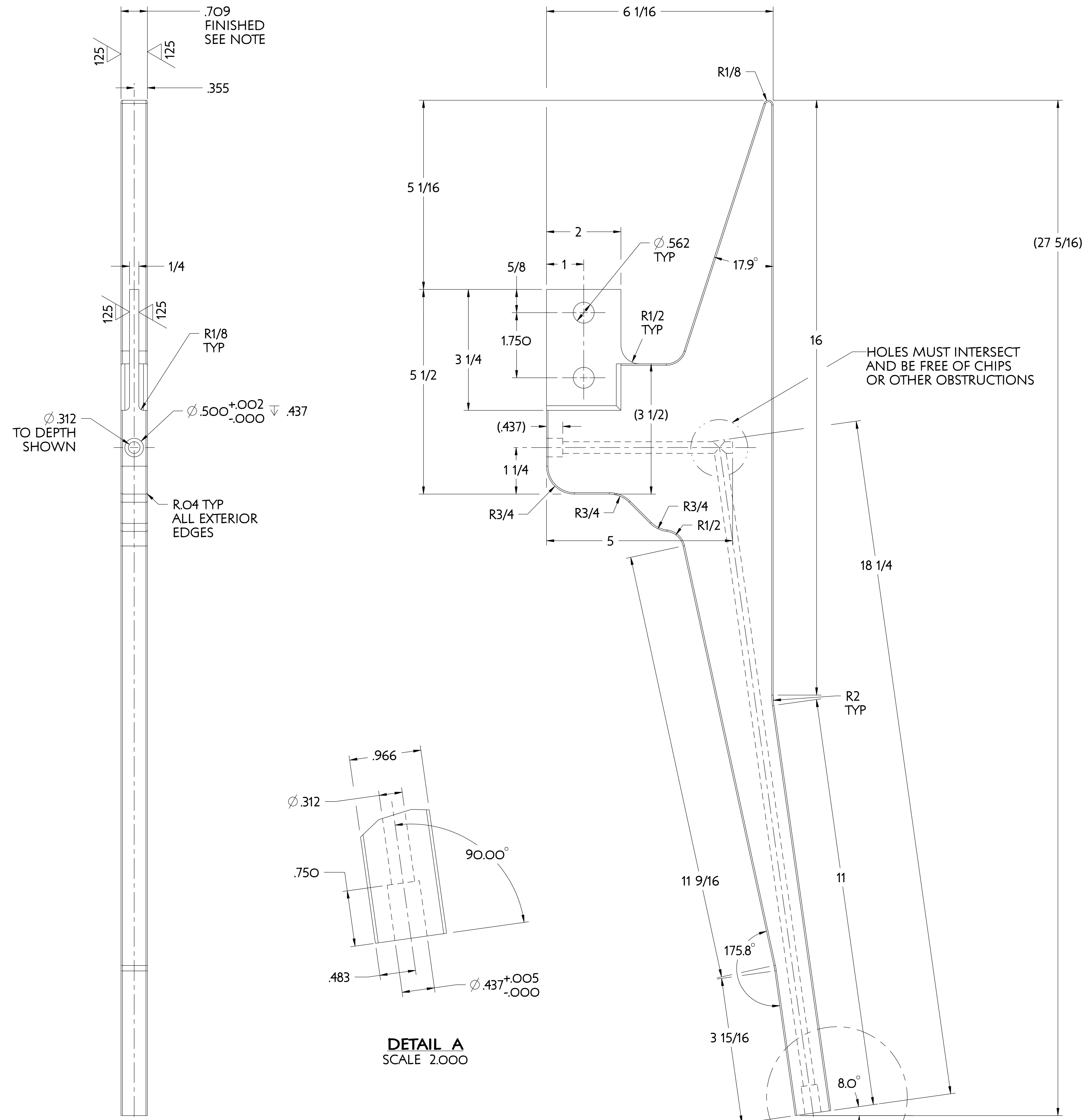


NO.	REVISION	BY	CH	SUP	APPROVED	DATE
1	REVISED PER ECN # 5103	JDR	MK	JS	M. KALISH	04/07/06



DETAIL A
SCALE 2.000

NOTE

WATER JET CUT FROM 3/4" THICK COPPER PLATE USING "DXF" FILE SUPPLIED.

EXCEPT FOR COOLANT CHANNEL HOLES ALL DIMENSIONS SHOWN ARE ROUNDED OFF AND ARE SHOWN FOR INFORMATION ONLY. TRUE GEOMETRY DEFINED ON PRO-E MODEL SE131-082.PRT

FINISH THICKNESS TO DIMENSION SHOWN.

MATERIAL: UNC C107 COPPER PLATE 1/8 HARD ROCKWELL HARDNESS F60

RELEASED FOR FABRICATION / INSTALLATION
PPPL Drafting:

SEE DETAIL A

WEIGHT	12.1 lbs
MODEL NAME	SE131-082
WELDING ENGINEER	

RELEASE LEVEL: Fabrication
DWG VERSION NO:

PART NO.	DRAWING NO	NOMENCLATURE OR DESCRIPTION	MATERIAL	QTY RECD
SE131-082		TF COIL LEAD SHORT		
PARTS LIST				
COMPUTER GENERATED DRAWING MANUAL CHANGES NOT PERMITTED		CENTRAL FILES: PRINCETON PLASMA PHYSICS LABORATORY UNLESS OTHERWISE SPECIFIED NATIONAL COMPACT STELLARATOR EXPERIMENT		
DO NOT VERIFY INFORMATION BY SCALING DRAWING		DIMENSIONS ARE IN INCHES MACHINE SURFACES UNLESS OTHERWISE SPECIFIED TF COIL LEAD SHORT - RIGHT (UNBENT)		
SCALE 1000		TOLERANCES NON-CUMULATIVE		
NEXT ASSEMBLY		DECIMAL-INCH FRACTIONS		
		DSN: J. RUSHINSKI 2/01/06 DRAWING NO: SE131-082		
		CHK: M. KALISH 2/01/06		
		ENGR: M. KALISH 2/01/06		
		SUPV: J. SIEGEL 2/01/06 SHEET 1 OF 1 REV 1		

NCSX-SE131-082