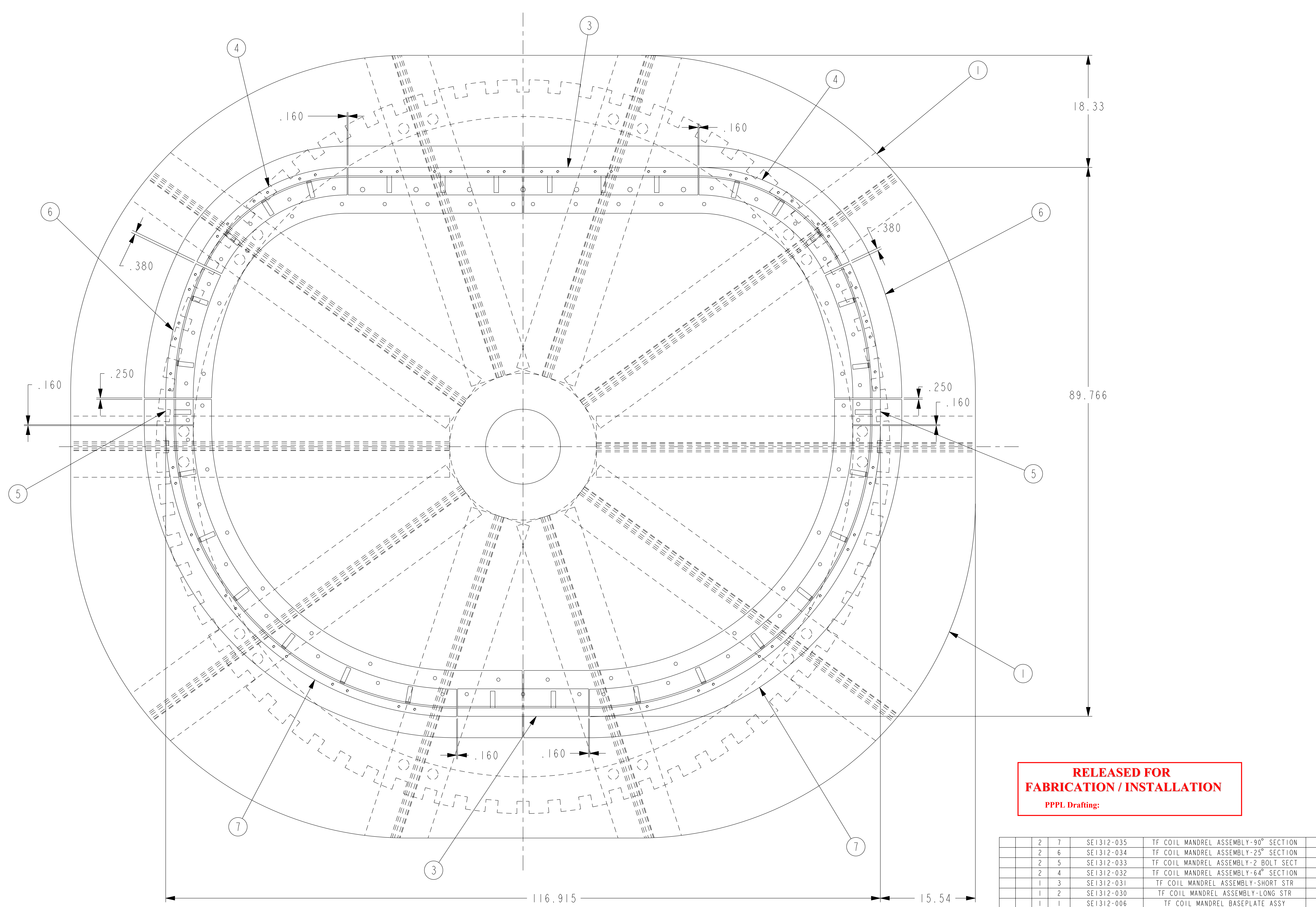


NO.	REVISION	BY	CH	SUP	APPROVED	DATE



**RELEASED FOR
FABRICATION / INSTALLATION**
PPPL Drafting:

SCALE 0.188

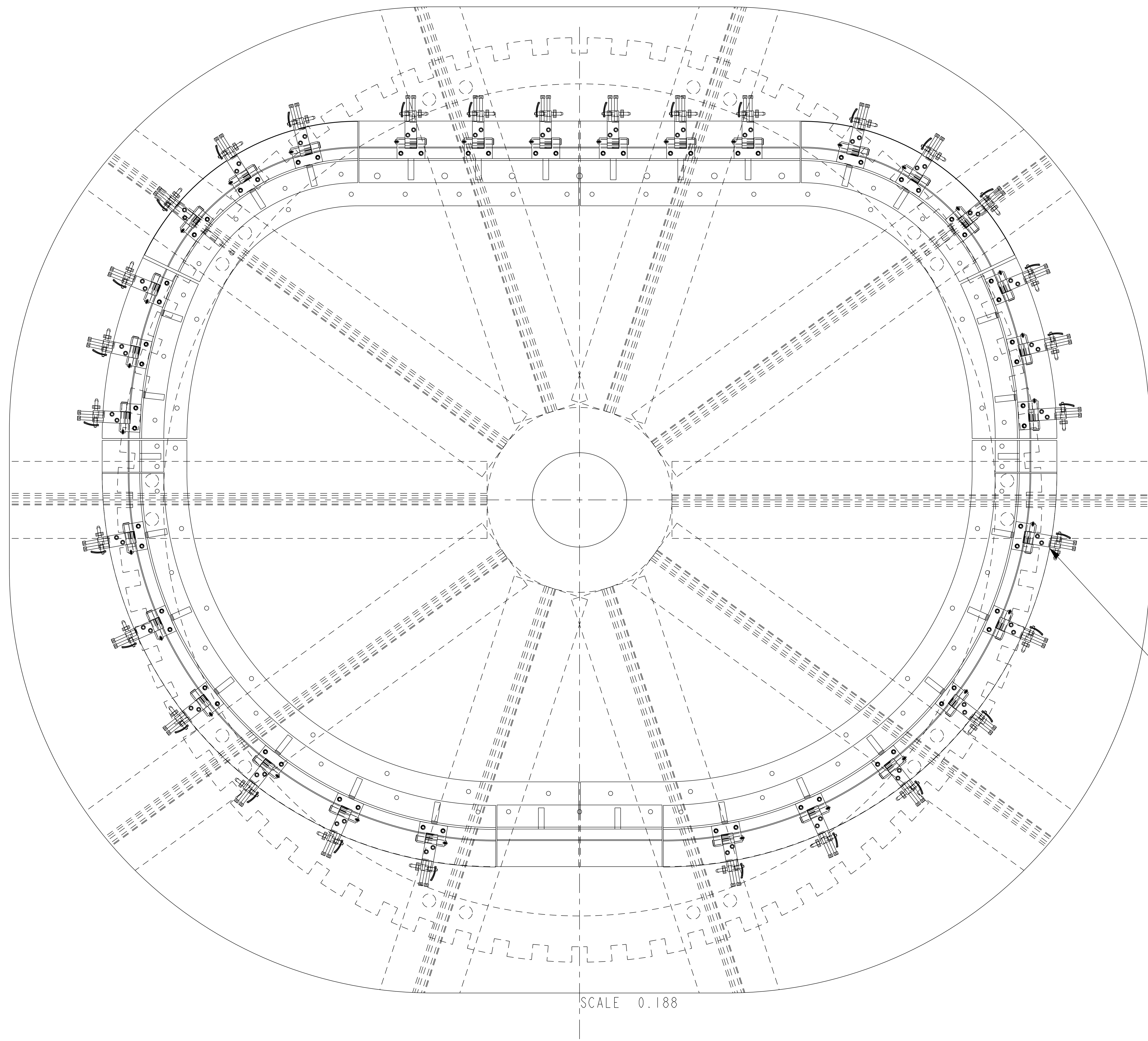
RELEASE LEVEL: Fabrication
DWG VERSION NO: 1

WEIGHT
1238.5 lbs
MODEL NAME
SE1312-013
WELDING
ENGINEER

2	7	SE1312-035	TF COIL MANDREL ASSEMBLY-90° SECTION	---		
2	6	SE1312-034	TF COIL MANDREL ASSEMBLY-25° SECTION	---		
2	5	SE1312-033	TF COIL MANDREL ASSEMBLY-2 BOLT SECT	---		
2	4	SE1312-032	TF COIL MANDREL ASSEMBLY-64° SECTION	---		
1	3	SE1312-031	TF COIL MANDREL ASSEMBLY-SHORT STR	---		
1	2	SE1312-030	TF COIL MANDREL ASSEMBLY-LONG STR	---		
1	1	SE1312-006	TF COIL MANDREL BASEPLATE ASSY	---		
X	----	----	THIS DWG	---		
03	02	01	PART NO.	DRAWING NO	NOMENCLATURE OR DESCRIPTION	MATERIAL
ASSY QTY		PARTS LIST				
COMPUTER GENERATED DRAWING MANUAL CHANGES NOT PERMITTED Pro E		CENTRAL FILES: UNLESS OTHERWISE SPECIFIED DIMENSIONS ARE IN INCHES MACHINE SURFACES B BREAK SHARP EDGES .005/.020				
DO NOT VERIFY INFORMATION BY SCALING DRAWING		PRINCETON PLASMA PHYSICS LABORATORY PRINCETON UNIVERSITY NATIONAL COMPACT STELLARATOR EXPERIMENT TF COIL WINDING MANDREL BASEPLATE ALIGNMENTS				
NEXT ASSEMBLY		TOLERANCES NON-CUMULATIVE DECIMAL-INCH FRACTIONS .XX +/- .000 .XXX +/- .005 ANGULAR +/- 0°15'		DSN: G. STEILL 08/29/05 CHK: S. RAFTOPOULOS 08/29/05 ENGR: J. CHRZANOWSKI 08/29/05 SUPV: J. SIEGEL 08/29/05		
		DRAWING NO: SE1312-013		SHEET 1 OF 2 REV 0		

NCSX-SE1312-013

NO.	REVISION	BY	CH	SUP	APPROVED	DATE



SEE SE1312-051 FOR CLAMP ASSEMBLY AND DETAILS

- NOTES:
1. TF COIL AND RELEASE MATERIAL OMITTED FOR CLARITY.
 2. FOR BOM SEE SHEET 1.

SCALE 0.188

RELEASE LEVEL: Fabrication
DWG VERSION NO: 1

WEIGHT	1238.5 lbs
MODEL NAME	SE1312-013
WELDING ENGINEER	

COMPUTER GENERATED DRAWING MANUAL CHANGES NOT PERMITTED Pro E	CENTRAL FILES: UNLESS OTHERWISE SPECIFIED DIMENSIONS ARE IN INCHES MACHINE SURFACES BREAK SHARP EDGES .005/.020	PRINCETON PLASMA PHYSICS LABORATORY PRINCETON UNIVERSITY NATIONAL COMPACT STELLARATOR EXPERIMENT TF COIL WINDING MANDREL BASEPLATE ALIGNMENTS	
DO NOT VERIFY INFORMATION BY SCALING DRAWING	TOLERANCES NON-CUMULATIVE DECIMAL-INCH FRACTIONS .X +/- .000 0°-120° +/- .010 .XX +/- .030 120°-120° +/- .010 .XXX +/- .005 120°-120° +/- .010 ANGULAR +/- .0°-15° OVER 120° +/- .1°	DSN: G. STEILL CHK: S. RAFTOPOULOS ENGR: J. CHRZANOWSKI SUPV: J. SIEGEL	08/29/05 08/29/05 08/29/05 08/29/05
NEXT ASSEMBLY		DRAWING NO: SE1312-013	SHEET 2 OF 2 REV 0

NCSX-SE1312-013