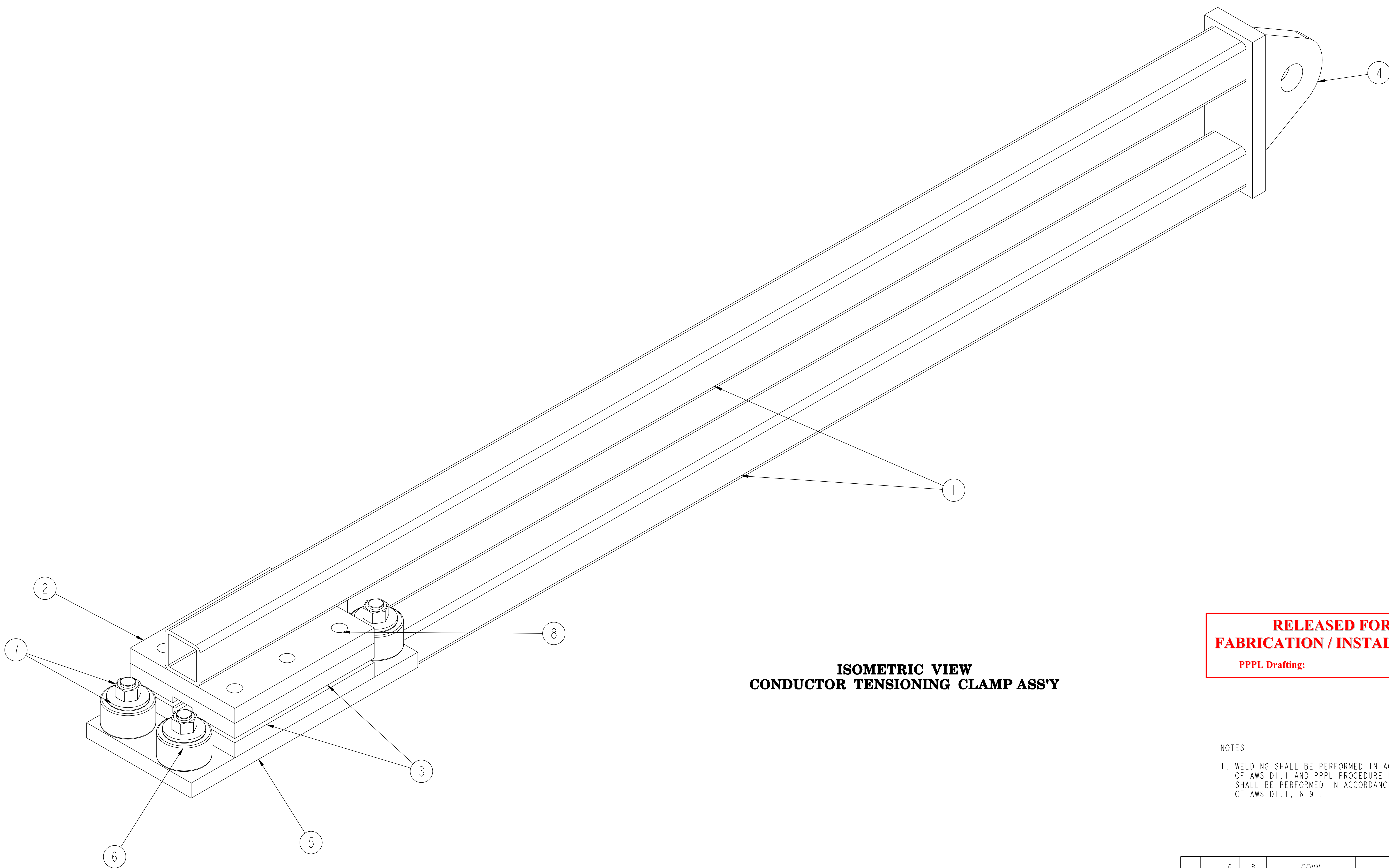


NO.	REVISION	BY	CH	SUP	APPROVED	DATE



**ISOMETRIC VIEW
CONDUCTOR TENSIONING CLAMP ASS'Y**

**RELEASED FOR
FABRICATION / INSTALLATION**

PPPL Drafting:

NOTES:
1. WELDING SHALL BE PERFORMED IN ACCORDANCE WITH THE REQUIREMENTS OF AWS D1.1 AND PPPL PROCEDURE NO. ENG-037. VISUAL WELD INSPECTION SHALL BE PERFORMED IN ACCORDANCE WITH THE ACCEPTANCE CRITERIA OF AWS D1.1, 6.9.

ASSY QTY	PART NO.	DRAWING NO	NOMENCLATURE OR DESCRIPTION	MATERIAL
6	8	COMM	5/8-11UNC X 4" LG HEX BOLT WITH NUT AND FLAT WASHERS	SS
4	7	COMM	5/8-11UNC X 3" LG HEX BOLT WITH NUT AND FLAT WASHERS	SS
4	6	COMM	PLAIN BORE TRACK ROLLER McMASTER CARR NO. 6831K51	CS
1	5	THIS DWG	.75 TH'K PLATE 6" X 13" (SEE DETAIL)	CS
1	4	THIS DWG	END CLEVIS WELDMENT (SEE DETAIL)	CS
2	3	THIS DWG	.75 TH'K PLATE 6" X 8" (SEE DETAIL)	G10/G11
1	2	THIS DWG	.75 TH'K PLATE 6" X 8" (SEE DETAIL)	CS
2	1	THIS DWG	2" SQUARE TUBING 3/16" WALL X 60" LG	CS
		----	CONDUCTOR TENSIONING CLAMP ASS'Y	-----

ASSY QTY	PARTS LIST

WEIGHT	104.2 lbs
MODEL NAME	SE1312-016
WELDING ENGINEER	L. DUDEK

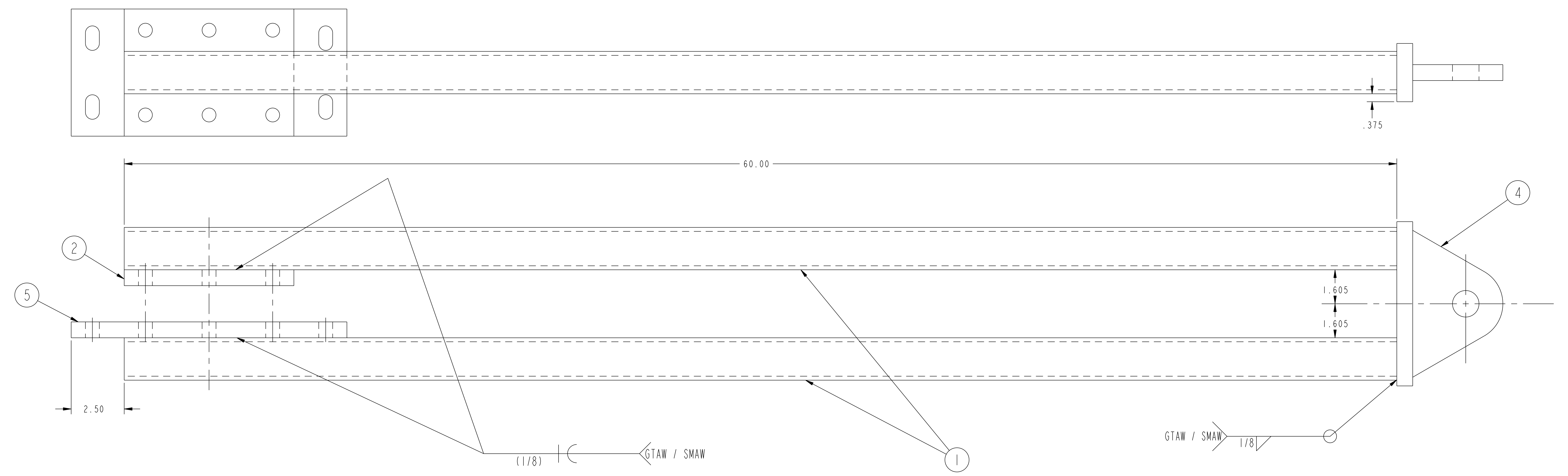
**RELEASE LEVEL: Fabrication
DWG VERSION NO: 3**

COMPUTER GENERATED DRAWING MANUAL CHANGES NOT PERMITTED	CENTRAL FILES: UNLESS OTHERWISE SPECIFIED	PRINCETON PLASMA PHYSICS LABORATORY PRINCETON UNIVERSITY NATIONAL COMPACT STELLARATOR EXPERIMENT			
DO NOT VERIFY INFORMATION BY SCALING DRAWING	DIMENSIONS ARE IN INCHES MACHINE SURFACES UNLESS OTHERWISE SPECIFIED	IF COIL WINDING ROOM CONDUCTOR TENSIONING CLAMP WELDED ASSEMBLY WITH DETAILS			
	TOLERANCES NON-CUMULATIVE	DSN: B. PAUL	8/25/05	DRAWING NO:	
	DECIMAL-INCH FRACTIONS	CHK: L. DUDEK	8/25/05	SE1312-016	
		ENGR: J. CHRZANOWSKI	8/25/05		
		SUPV: J. SIEGEL	8/25/05	SHEET 1 OF 2	
				REV 0	

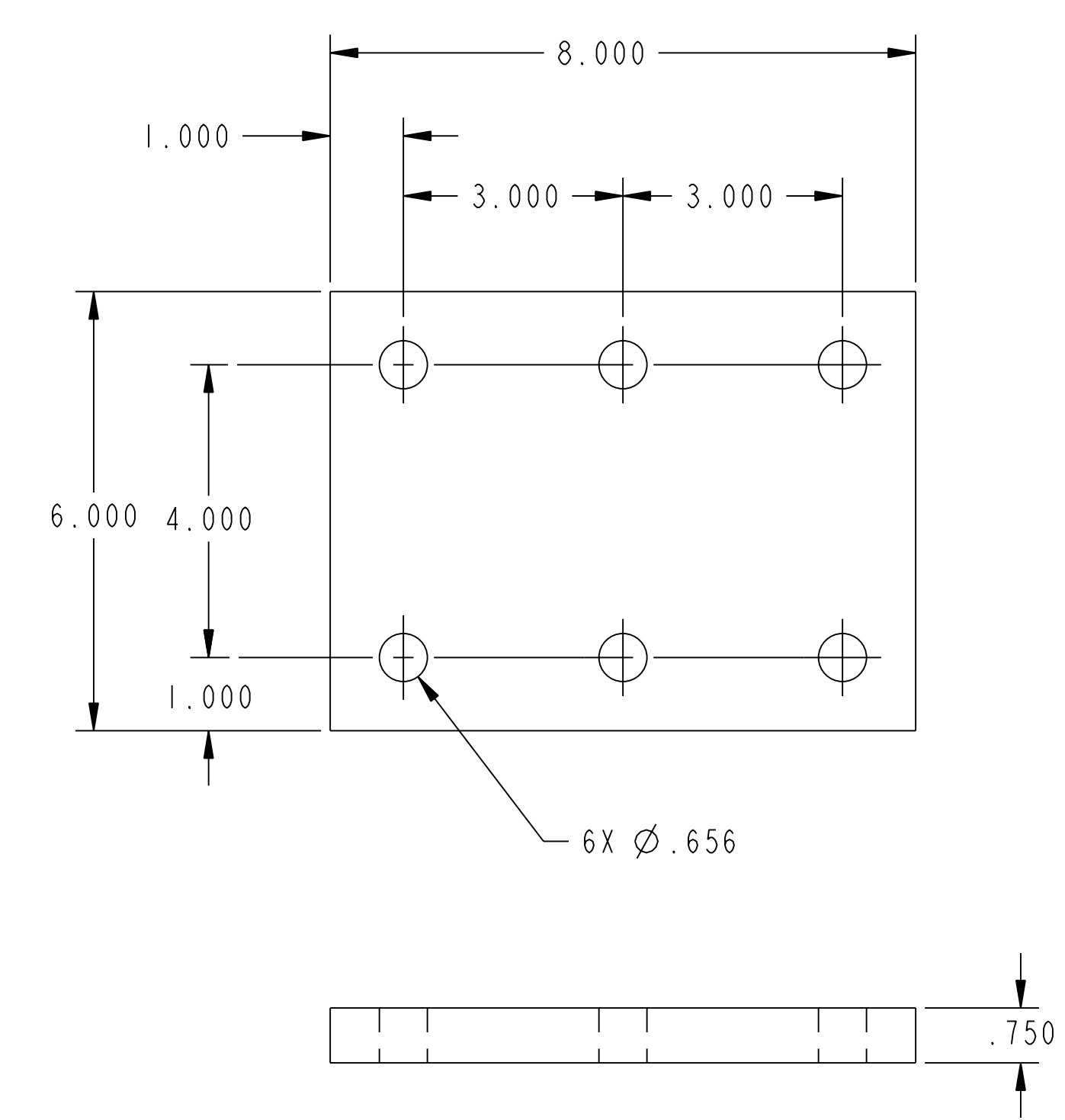
NCSX-SEI 312-016

K

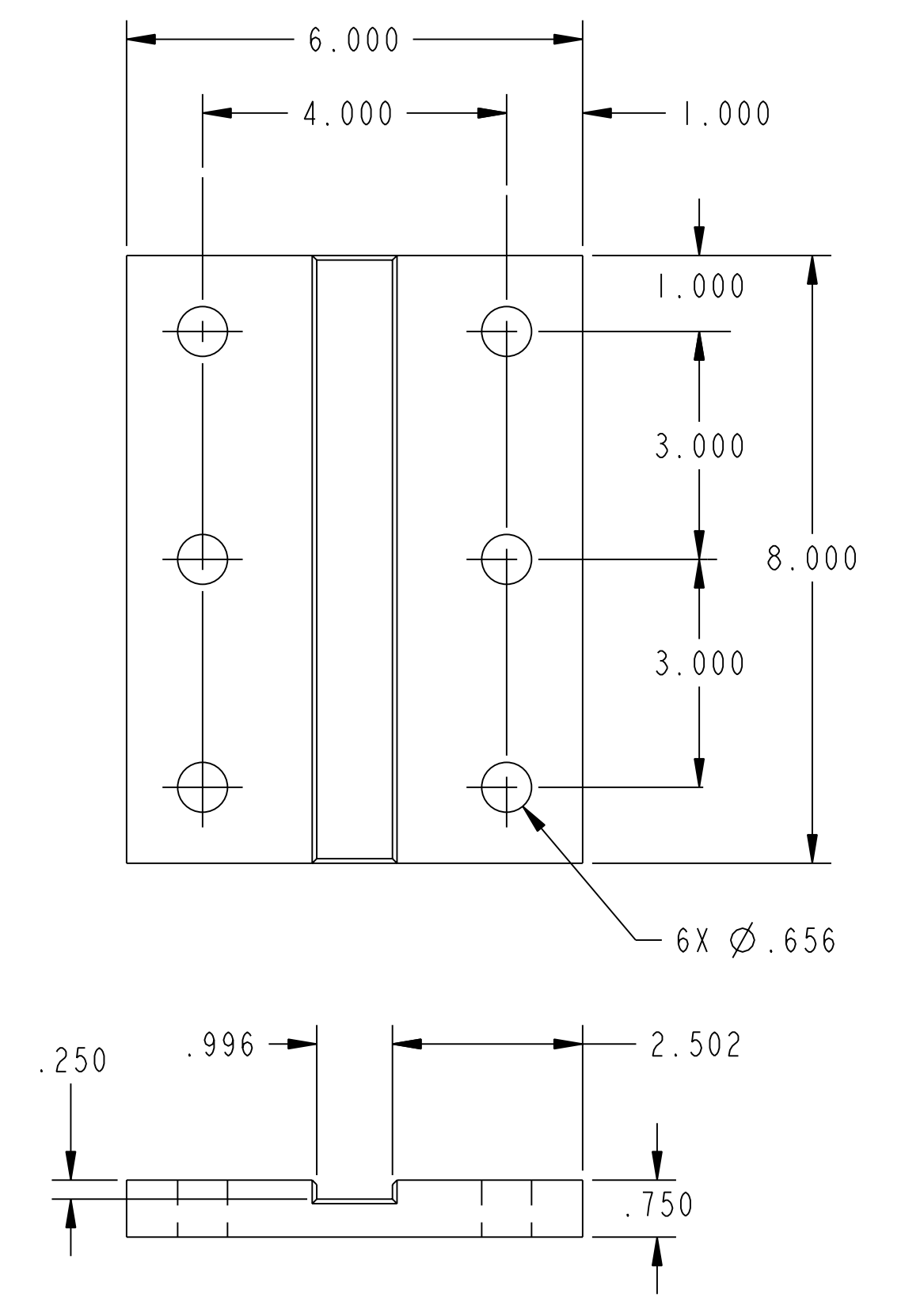
NO.	REVISION	BY	CH	SUP	APPROVED	DATE



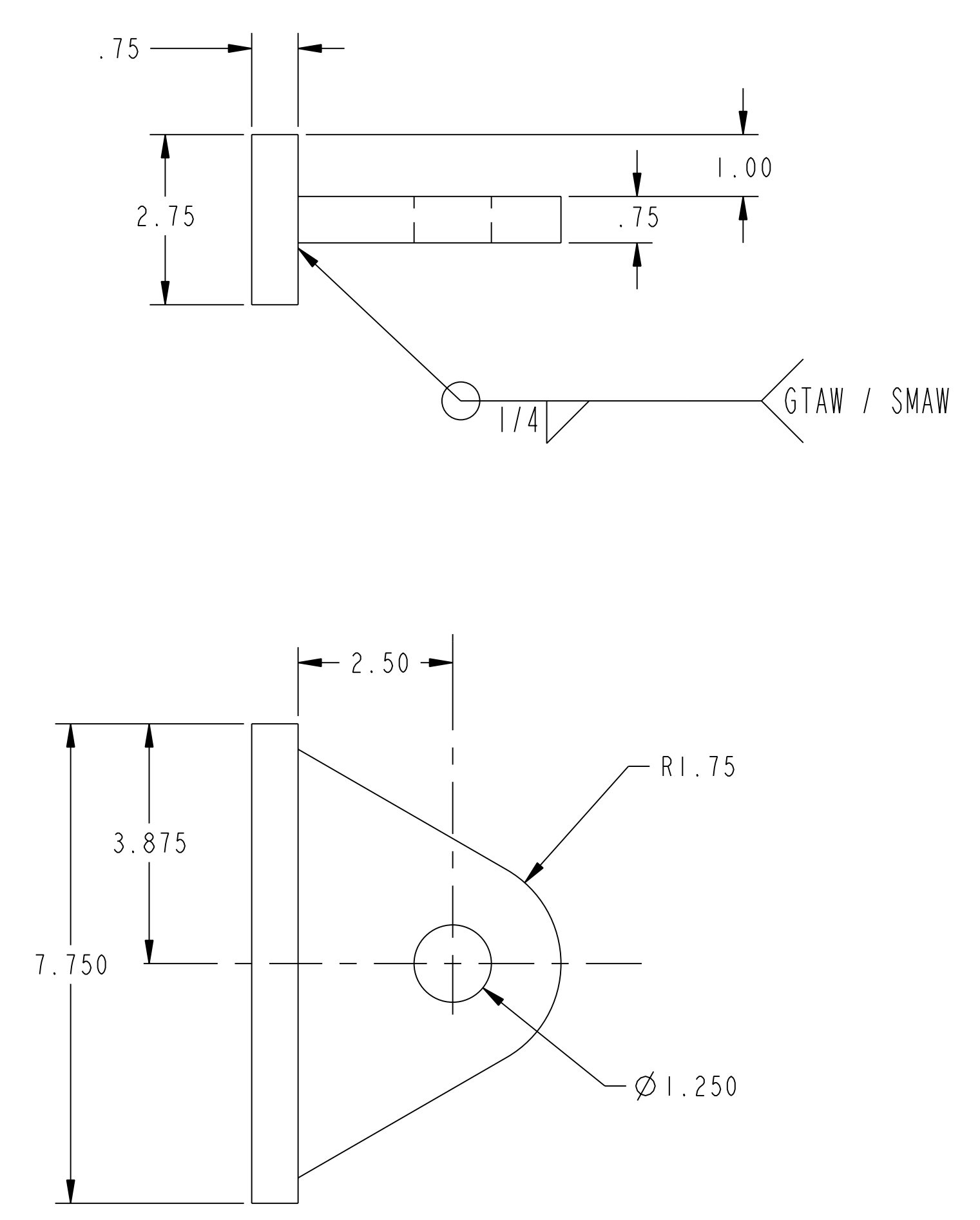
**CONDUCTOR CLAMP ASS'Y
WELDMENT**



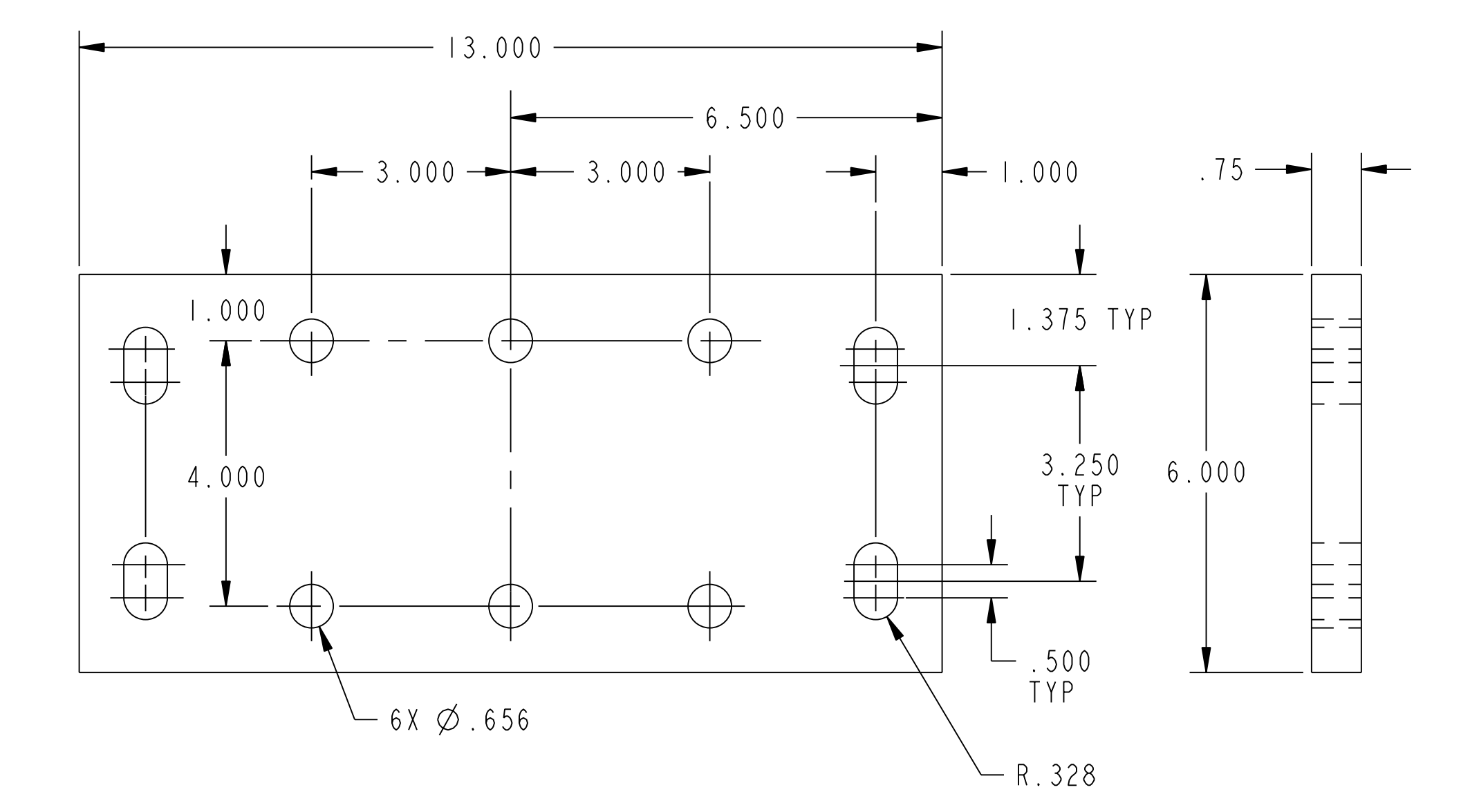
PART 2



PART 3



PART 4



PART 5

**RELEASED FOR
FABRICATION / INSTALLATION**
PPPL Drafting:

**RELEASE LEVEL: Fabrication
DWG VERSION NO: 3**

WEIGHT 104.2 lbs	COMPUTER GENERATED DRAWING MANUAL CHANGES NOT PERMITTED	CENTRAL FILES:	PRINCETON PLASMA PHYSICS LABORATORY PRINCETON UNIVERSITY		
	Pro E	UNLESS OTHERWISE SPECIFIED	NATIONAL COMPACT STELLARATOR EXPERIMENT		
MODEL NAME SE1312-016	DO NOT VERIFY INFORMATION BY SCALING DRAWING	DIMENSIONS ARE IN INCHES MACHINE SURFACES	IF COIL WINDING ROOM CONDUCTOR TENSION CLAMP WELDED DETAILS WITH DETAILS		
WELDING ENGINEER L. DUDER	NEXT ASSEMBLY	TOLERANCES NON-CUMULATIVE	DSN:	B. PAUL	8/25/05
		DECIMAL-INCH FRACTIONS	CHK:	L. DUDER	8/25/05
		.XX ±.000 0°-120° ±.1250	ENGR:	J. CHRZANOWSKI	8/25/05
		.XXX ±.005 120°-120° ±.1250	SUPV:	J. SIEGEL	8/25/05
		ANGULAR ±.0°-15° OVER 120° ±.1250	DRAWING NO:	SE1312-016	
			SHEET 2 OF 2	REV 0	

NCSX-SET 1312-016