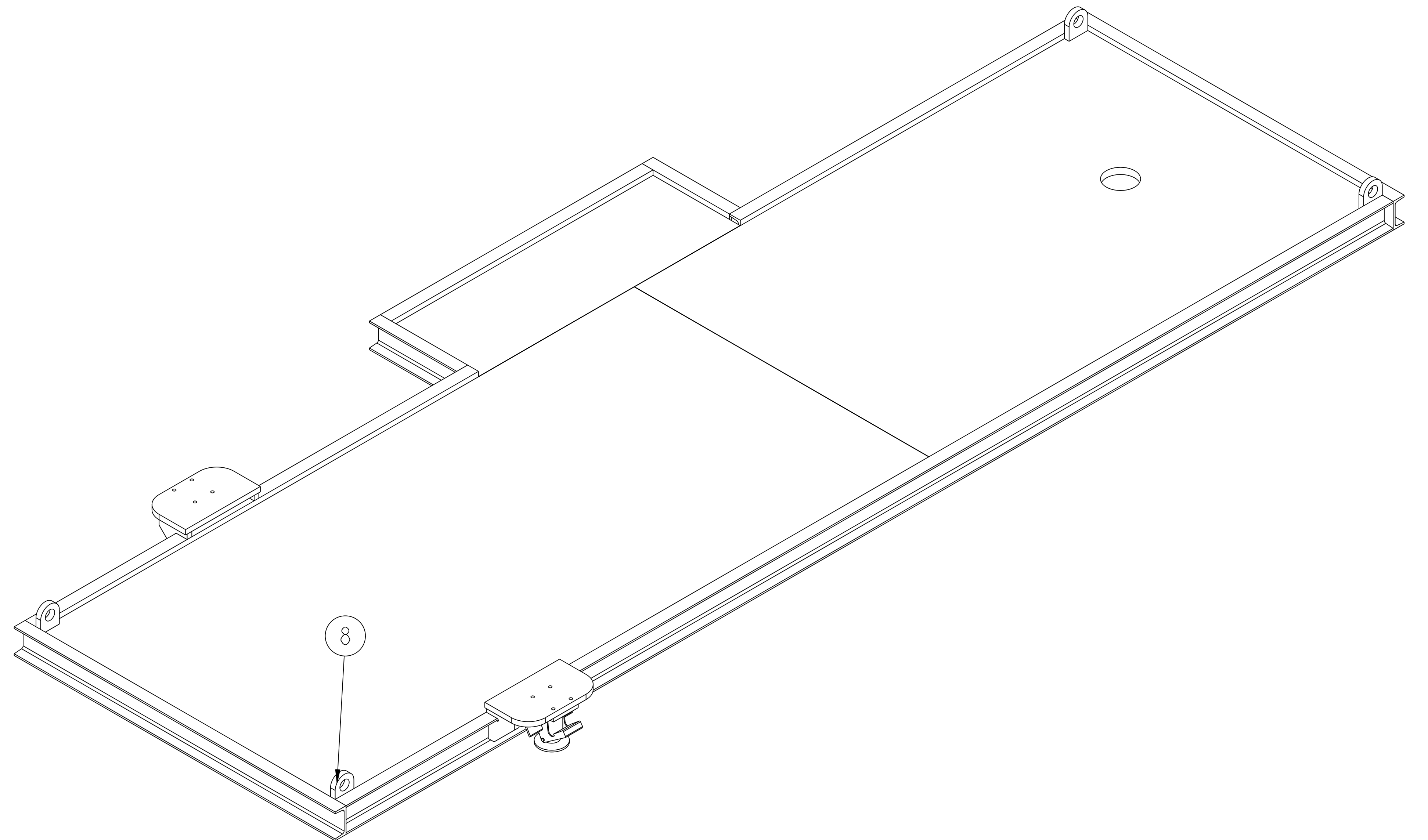
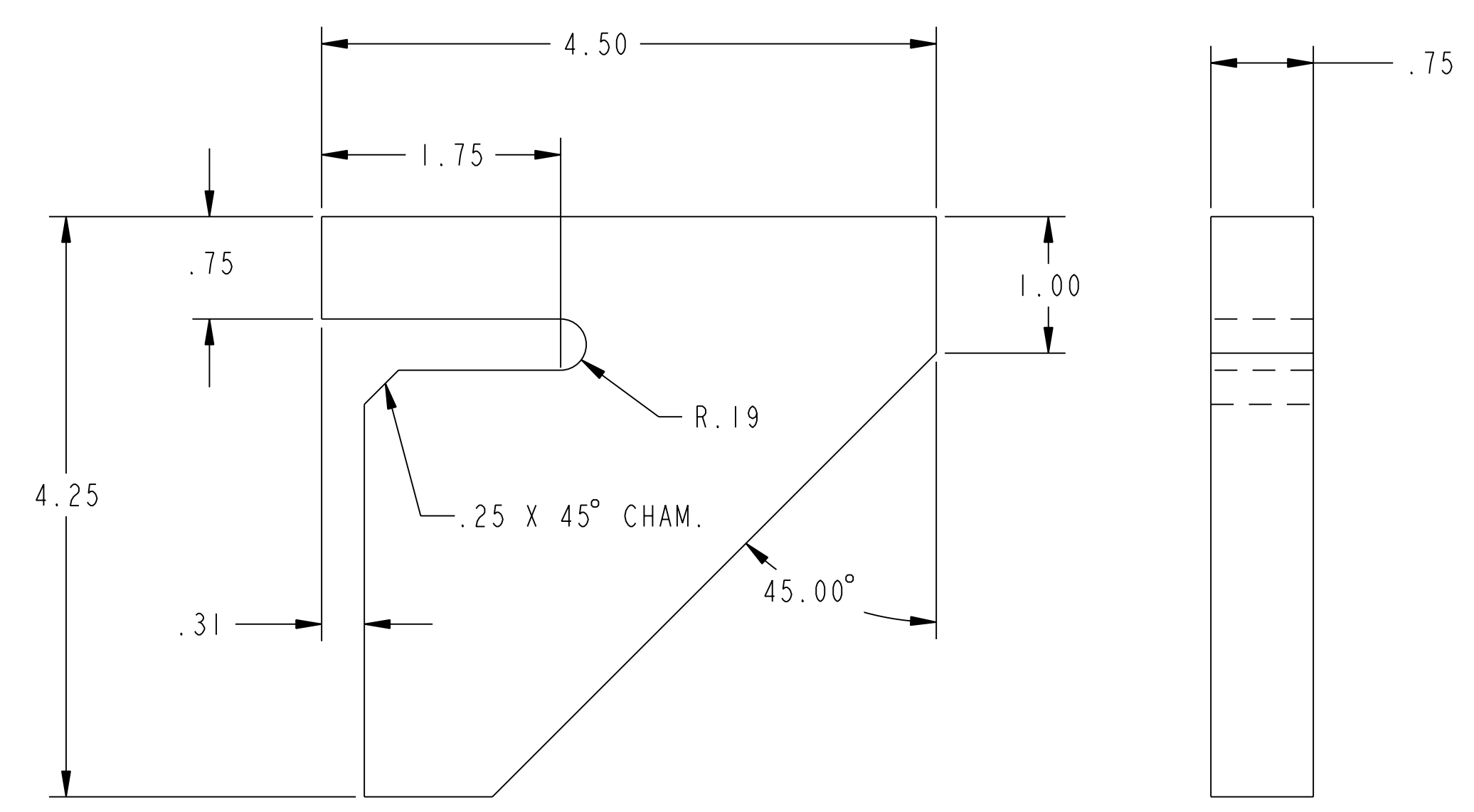


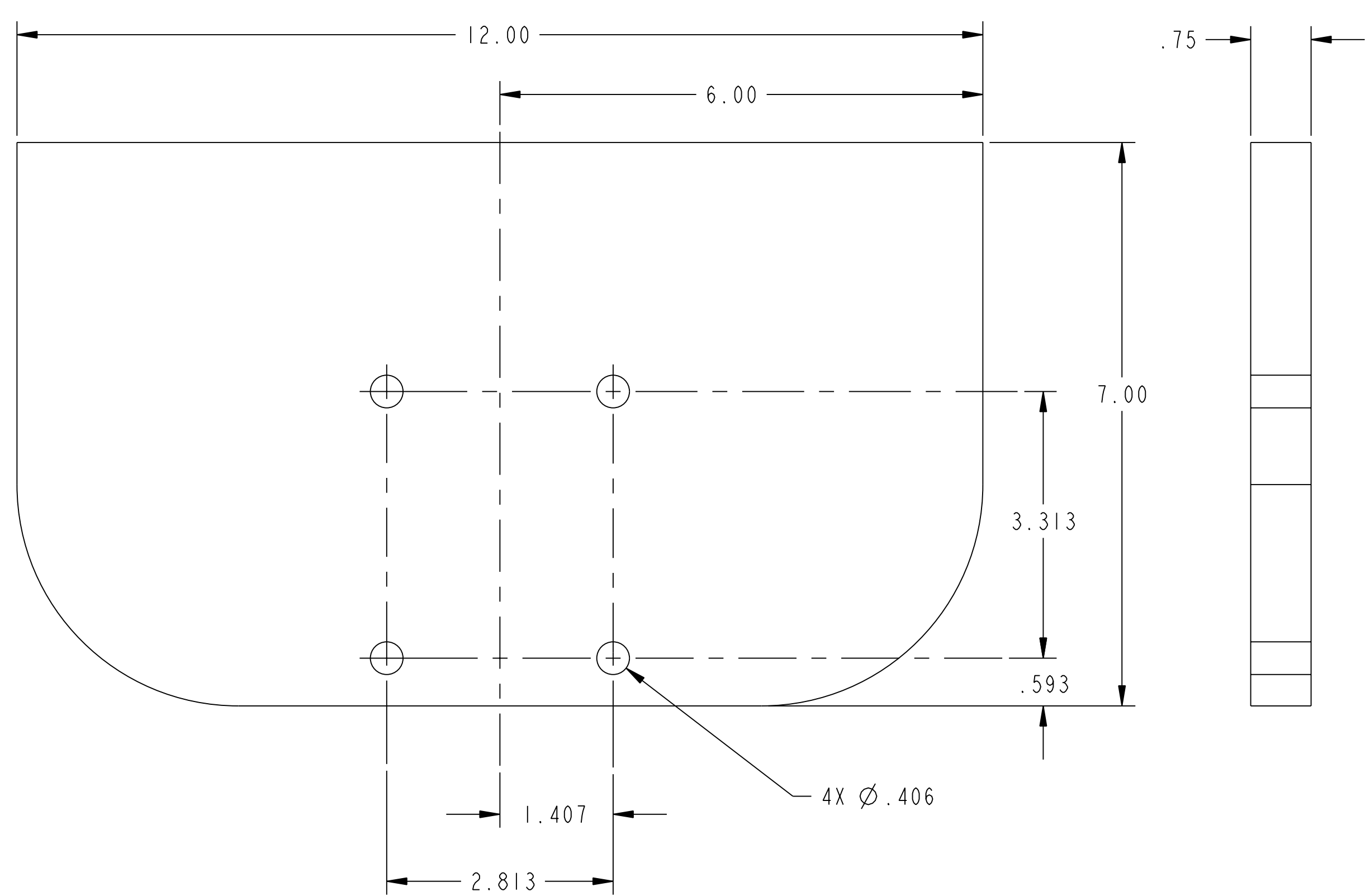
PARTIAL BOTTOM ISOMETRIC TENSIONING / WRAPPING TABLE



ISOMETRIC VIEW TENSIONING / WRAPPING TABLE



PART 6



PART 7

RELEASED FOR FABRICATION / INSTALLATION
PPPL Drafting:

NOTES:
1. WELDING SHALL BE PERFORMED IN ACCORDANCE WITH THE REQUIREMENTS OF AWS D1.1 AND PPPL PROCEDURE NO. ENG-037. VISUAL WELD INSPECTION SHALL BE PERFORMED IN ACCORDANCE WITH THE ACCEPTANCE CRITERIA OF AWS D1.1, 6.9.

ASSY QTY	PART NO.	DRAWING NO	NOMENCLATURE OR DESCRIPTION	MATERIAL
	8	9	COMM	3/8-16UNC HEX BOLT X 2 1/2" LG WITH NUT
	4	8	THIS DWG	3/4" TH'K PL 3" X 3.50" (SEE DETAIL)
	2	7	COMM	FLOOT LOCK McMASTER CARR NO. 2728T21
	2	6	THIS DWG	3/4" TH'K PL 7" X 12" (SEE DETAIL)
	4	5	THIS DWG	3/4" TH'K PL 4.25" X 4.50" (SEE DETAIL)
	3	4	COMM	HILLMAN ROLLER # 1-T HGT. F= 2 3/8"
	3	3	THIS DWG	1/2" TH'K PLATE 5" X 7"
	AR	2	THIS DWG	C 4 X 7.25# (SEE DETAIL SHT 2) APPROX TOTAL = 42' LINEAR FT.
	AR	1	THIS DWG	1" TH'K PLATE (SEE DETAIL SHT 2)
			THIS DWG	TENSIONING/WRAPPING TABLE ASSEMBLY

COMPUTER GENERATED DRAWING		CENTRAL FILES:		PRINCETON PLASMA PHYSICS LABORATORY	
MANUAL CHANGES NOT PERMITTED	PRO E	UNLESS OTHERWISE SPECIFIED	PRINCETON UNIVERSITY		
DO NOT VERIFY INFORMATION BY SCALING DRAWING		DIMENSIONS ARE IN INCHES	NATIONAL COMPACT STELLARATOR EXPERIMENT		
		BREAK SHARP EDGES .005/.020	1" COIL WINDING ROOM		
		TOLERANCES NON-CUMULATIVE	DSN: B. PAUL	8/15/05	DRAWING NO:
		DECIMAL-INCH FRACTIONS	CHK: M. KALISH	8/15/05	SE1312-017
		XXX +/- .005 12" - 120" +/- .124	ENGR: J. CHRZANOWSKI	8/15/05	
		ANGULAR +/- .05 OVER 120" +/- .124	SUPV: J. SEIGEL	8/15/05	SHEET 1 OF 2
					REV 0

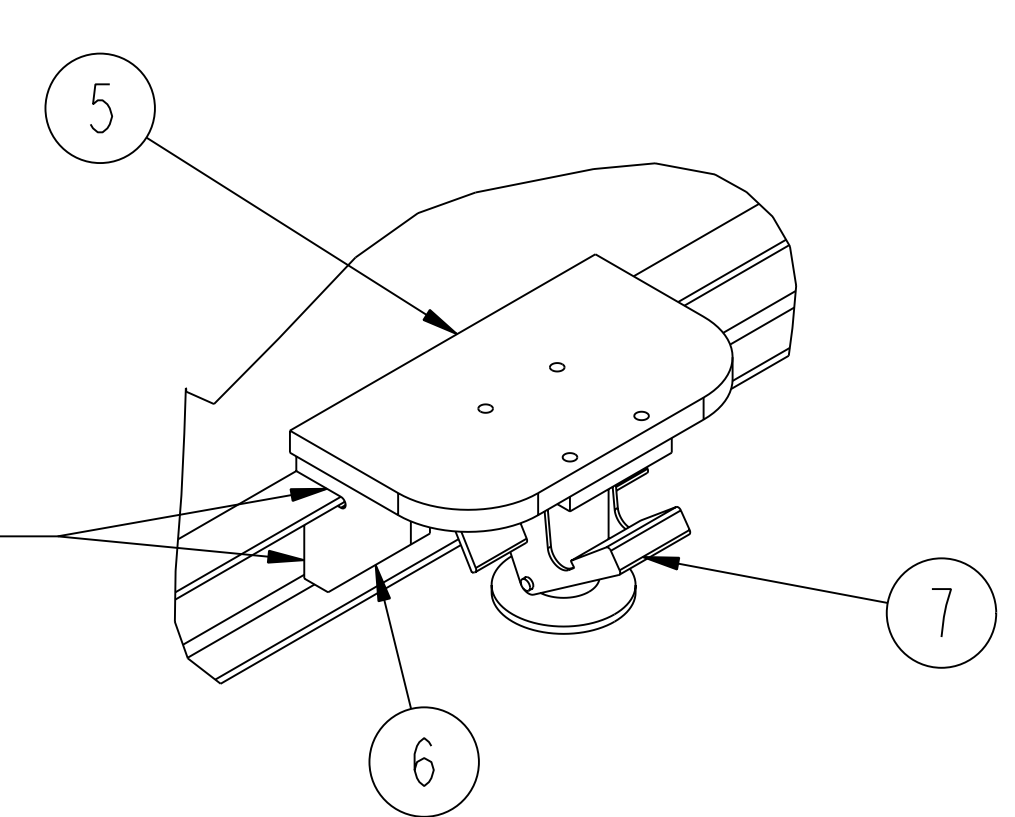
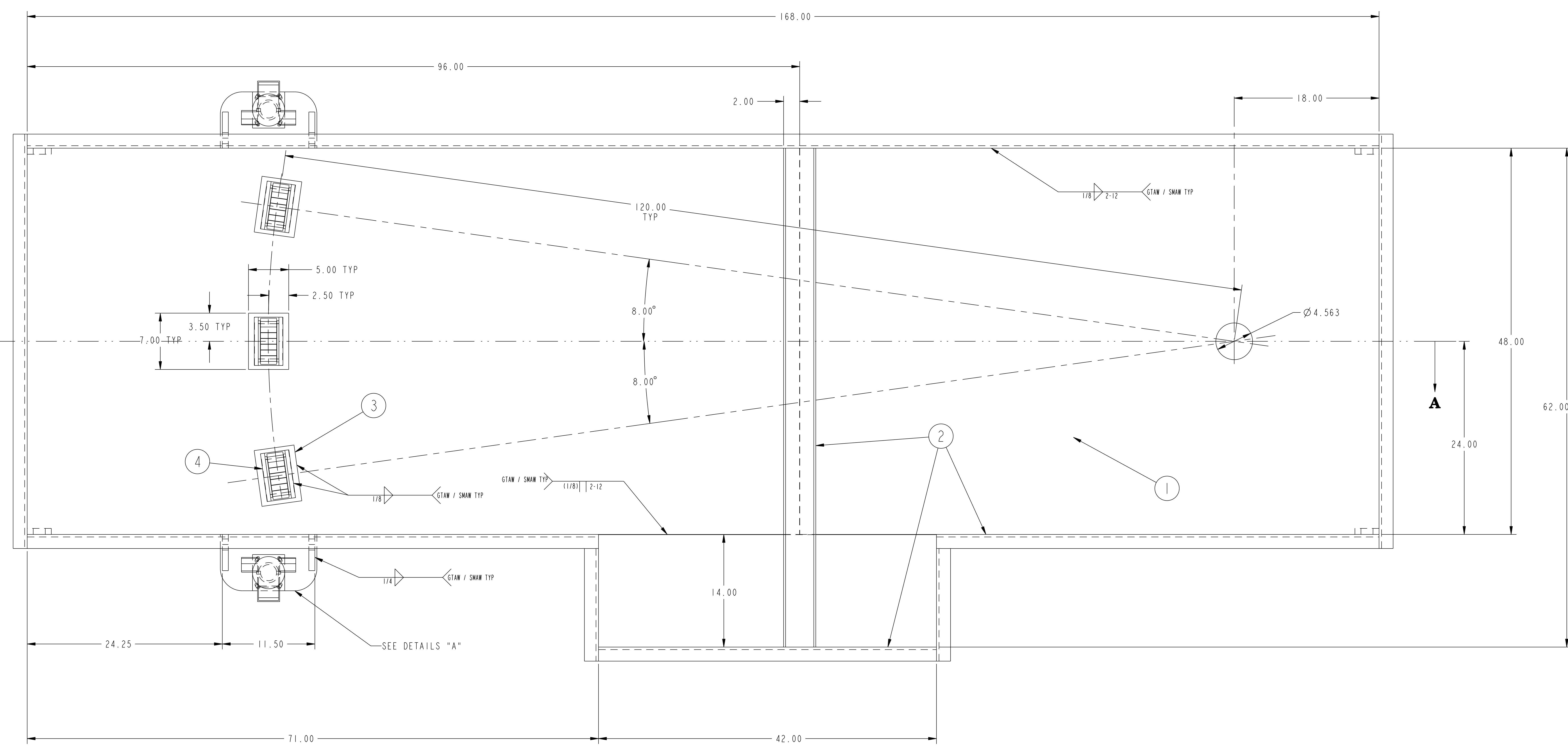
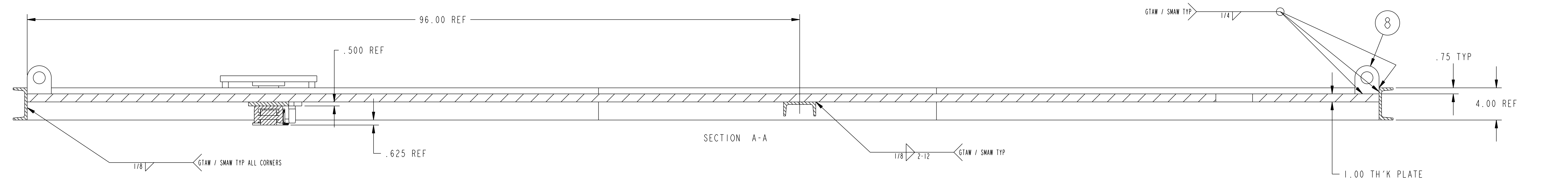
RELEASE LEVEL: FABRICATION
DWG VERSION NO: 3

WEIGHT: 2905.2 lbs
MODEL NAME: SE1312-017
WELDING ENGINEER: R. KEILBACH

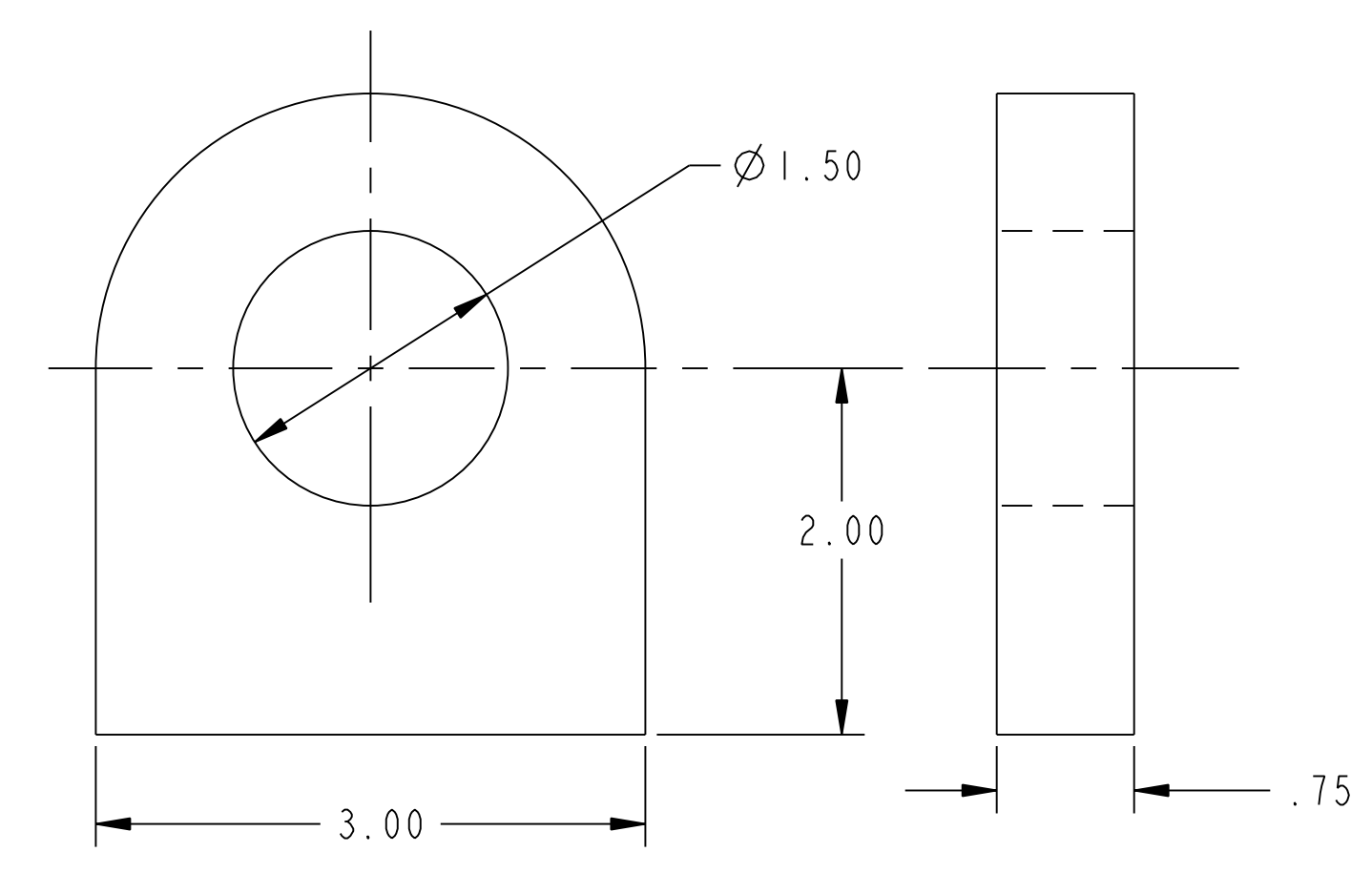
NCSX-SET 1312-017

NCSX-ASSY-FORMAT.E

NO.	REVISION	BY	CH	SUP	APPROVED	DATE



DETAIL "A"



PART 8

**RELEASED FOR
FABRICATION / INSTALLATION**
 PPPL Drafting:

COMPUTER GENERATED DRAWING MANUAL CHANGES NOT PERMITTED Pro E DO NOT VERIFY INFORMATION BY SCALING DRAWING	CENTRAL FILES:	PRINCETON PLASMA PHYSICS LABORATORY			
	UNLESS OTHERWISE SPECIFIED	PRINCETON UNIVERSITY			
DIMENSIONS ARE IN INCHES MACHINE SURFACES BREAK SHARP EDGES .005/.020	TOLERANCES NON-CUMULATIVE	DSN:	B. PAUL	8/15/05	DRAWING NO:
DECIMAL-INCH FRACTIONS .XX ±.000 .XXX ±.005 ANGULAR ±.0°-15° OVER 120° ±.1°-1°2'	.12" ±.005 .12" ±.005 .12" ±.005 .12" ±.005	CHK:	M. KALISH	8/15/05	SE1312-017
NEXT ASSEMBLY	ENGR: J. CHRZANOWSKI SUPV: J. SEIGEL	8/15/05	8/15/05	8/15/05	SHEET 2 OF 2
WEIGHT	2905.2 lbs	WELDING ENGINEER:	R. KEILBACH	REV 0	DATE
MODEL NAME	SE1312-017	NATIONAL COMPACT STELLATOR EXPERIMENT 1 ST COIL WINDING ROOM CONDUCTOR TENSIONING/WRAPING TABLE WELDED ASSEMBLY WITH MISC. DETAILS			
RELEASE LEVEL: FABRICATION	DWG VERSION NO: 3	PRINCETON UNIVERSITY PPPL Drafting:			

NCSX-SE1312-017