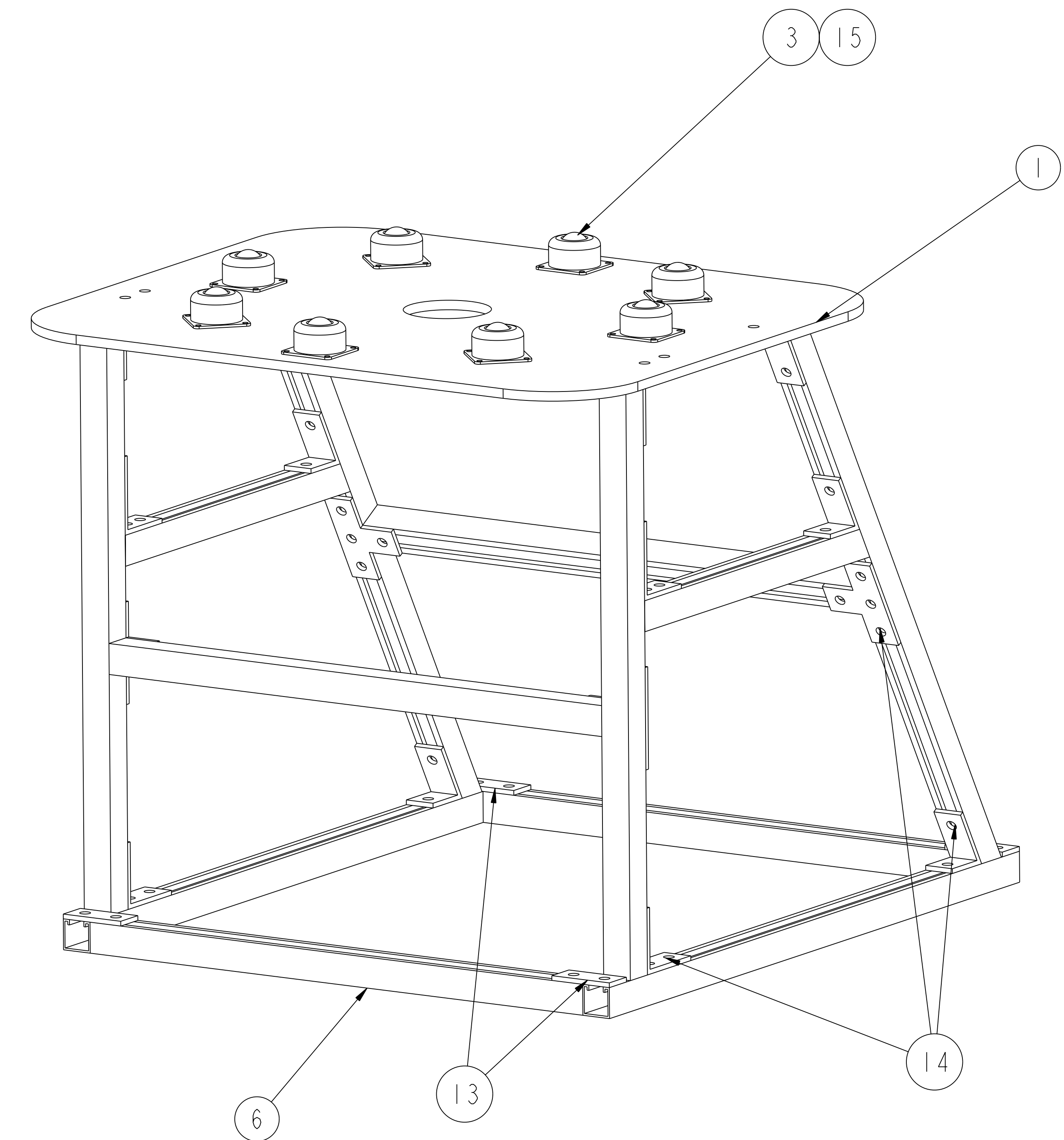
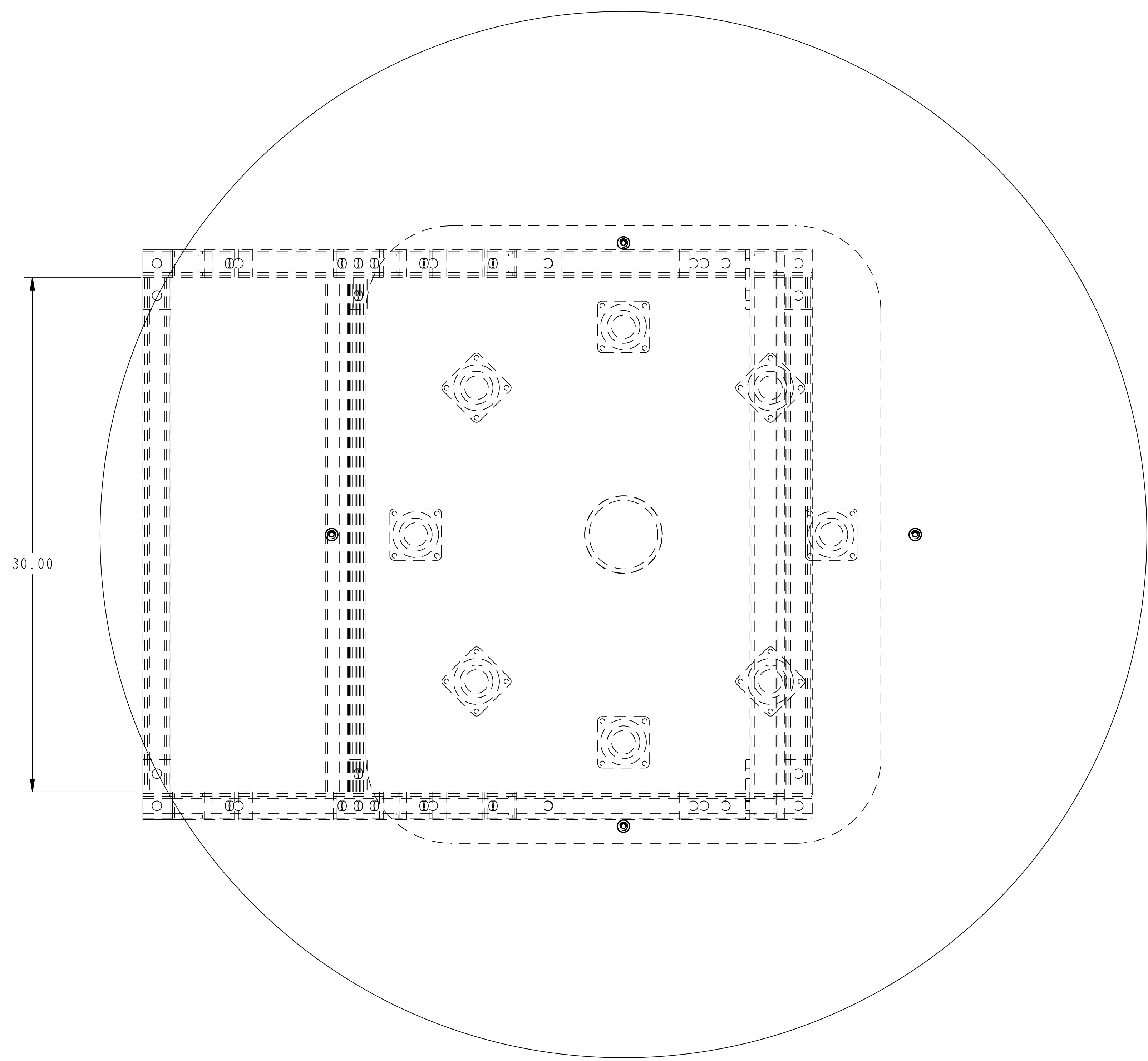
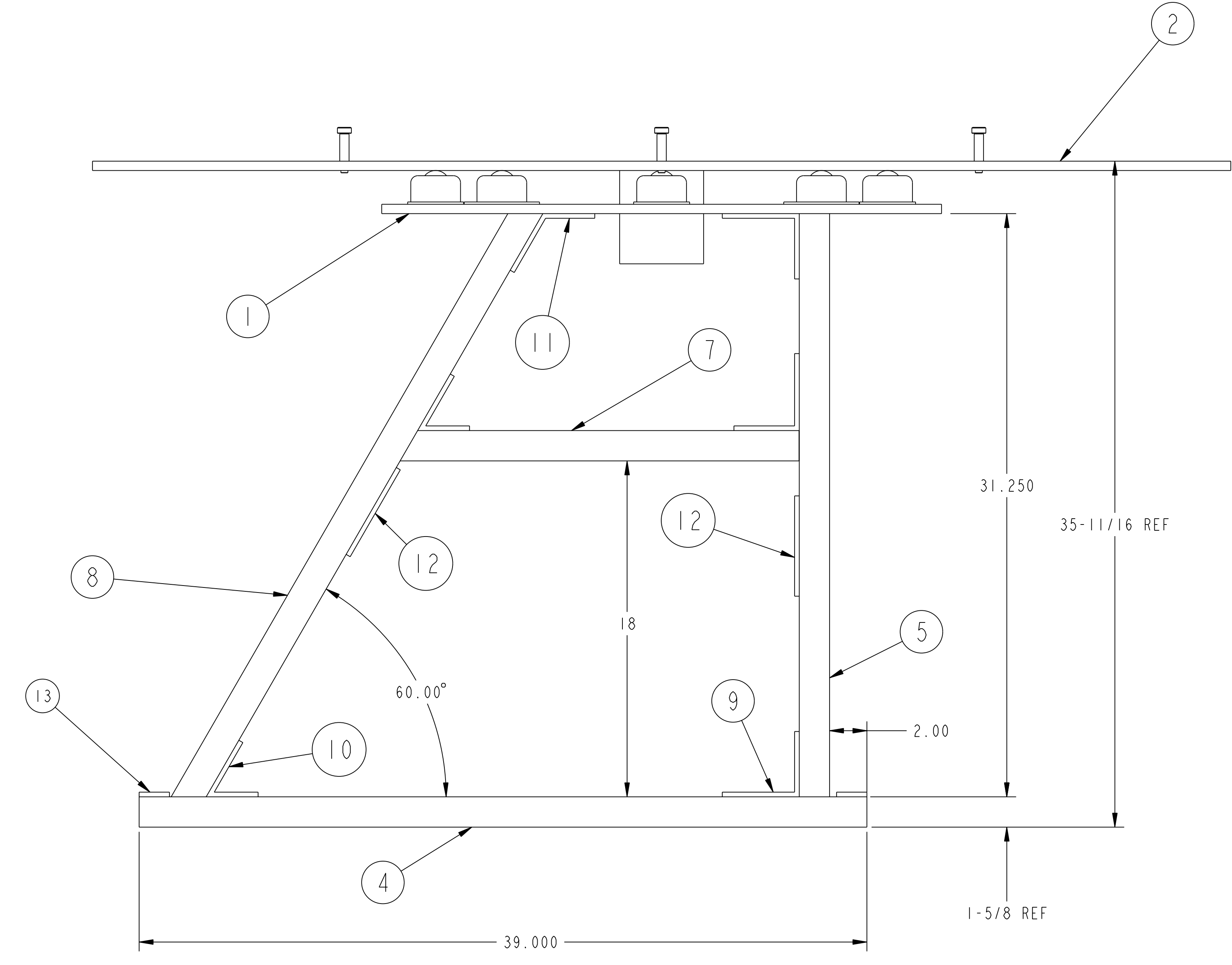


NO.	REVISION	BY	CH	SUP	APPROVED	DATE



**ISOMETRIC VIEW
CONDUCTOR FEED TABLE
ASSEMBLY**



**CONDUCTOR FEED TABLE
ASSEMBLY**

NOTES:
1. WELDING SHALL BE PERFORMED IN ACCORDANCE WITH THE REQUIREMENTS OF AWS D1.1 AND PPPL PROCEDURE NO. ENG-037. VISUAL WELD INSPECTION SHALL BE PERFORMED IN ACCORDANCE WITH THE ACCEPTANCE CRITERIA OF AWS D1.1, 6.9.

**RELEASED FOR
FABRICATION / INSTALLATION**
PPPL Drafting:

QTY	PART NO.	DESCRIPTION	MATERIAL
4	16	COMM 3/8-16UNC SOC HD SHOULDER BOLT 1.5" LG	CS
32	15	COMM 1/4-20UNC HEX HD BOLT 1" LG /NUT	CS
AR	14	COMM UNISTRUT NUT P1008 WITH 3/8" HEX BOLT	CS
4	13	COMM UNISTRUT P1031 2 HOLE FLAT FITTING	CS
4	12	COMM UNISTRUT P1031 4 HOLE FLAT FITTING	CS
2	11	COMM UNISTRUT P2097 60° OUTSIDE ANGLE FITTING	CS
2	10	COMM UNISTRUT P2108 60° ANGLE FITTING	CS
6	9	COMM UNISTRUT P1325 90° FITTING	CS
2	8	COMM UNISTRUT P-1000 33" LG APP. CUT AS SHOWN	CS
2	7	COMM UNISTRUT P-1000 21.38" LG CUT AS SHOWN	CS
4	6	COMM UNISTRUT P-1000 30" LG	CS
2	5	COMM UNISTRUT P-1000 31.25 " LG	CS
2	4	COMM UNISTRUT P-1000 39" LG	CS
8	3	COMM BALL TRANSFER McMASTER # 5674K20	CS
1	2	THIS DWG TABLE TOP (SEE DETAIL)	CS
1	1	THIS DWG CONDUCTOR SPOOL TABLE (SEE DETAIL)	CS
---	---	THIS DWG CONDUCTOR FEED TABLE ASSEMBLY	-----

ASSY QTY	PARTS LIST	NOMENCLATURE OR DESCRIPTION	MATERIAL
03 02 01	PART NO.	DRAWING NO	

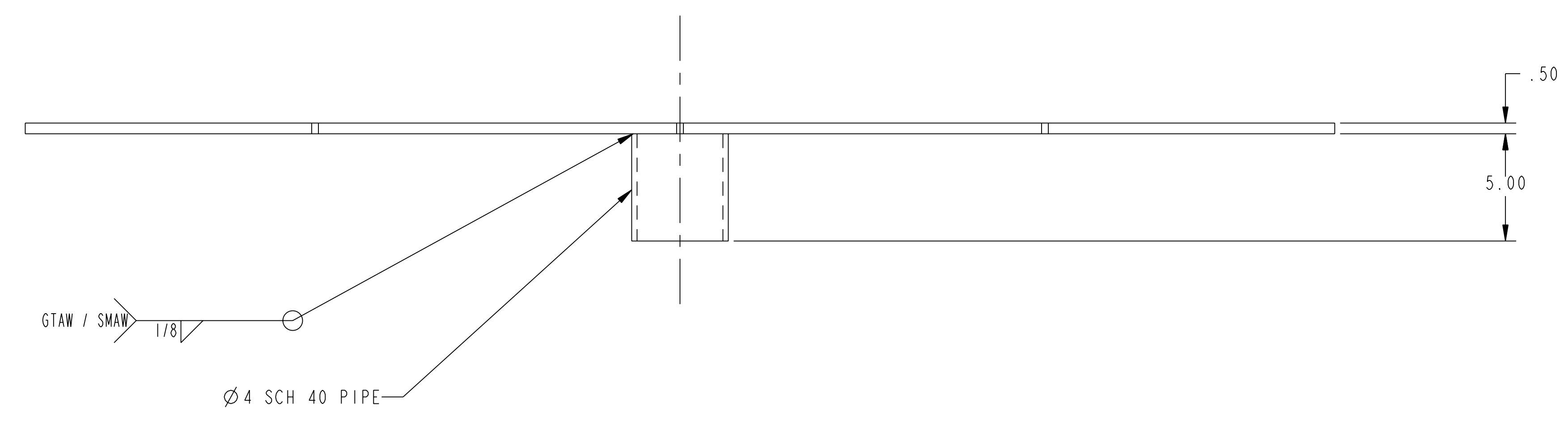
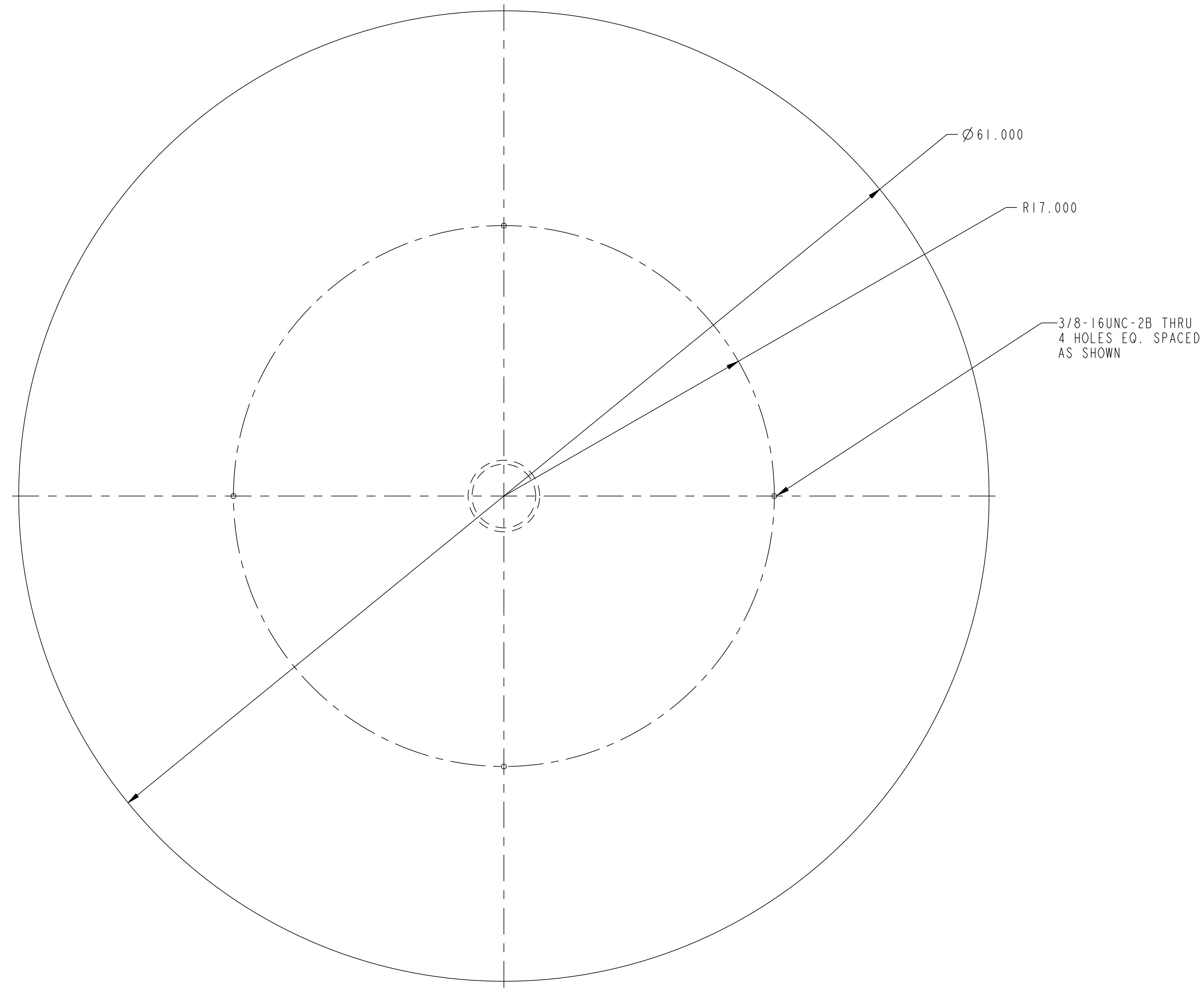
WEIGHT	239.4 lbs
MODEL NAME	SE1312-020
WELDING ENGINEER	R. KEILBACH

RELEASE LEVEL: Fabrication
DWG VERSION NO: 6

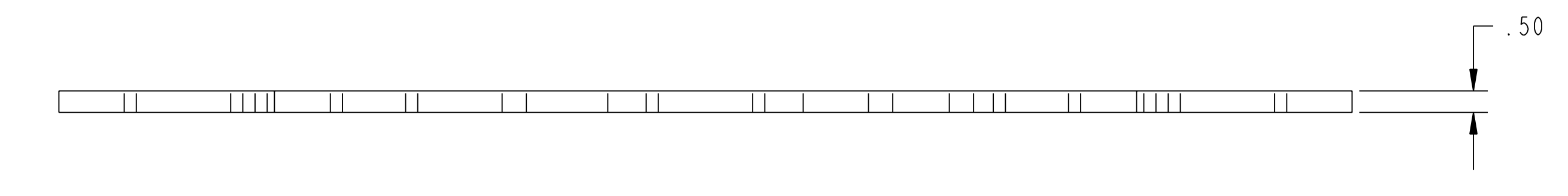
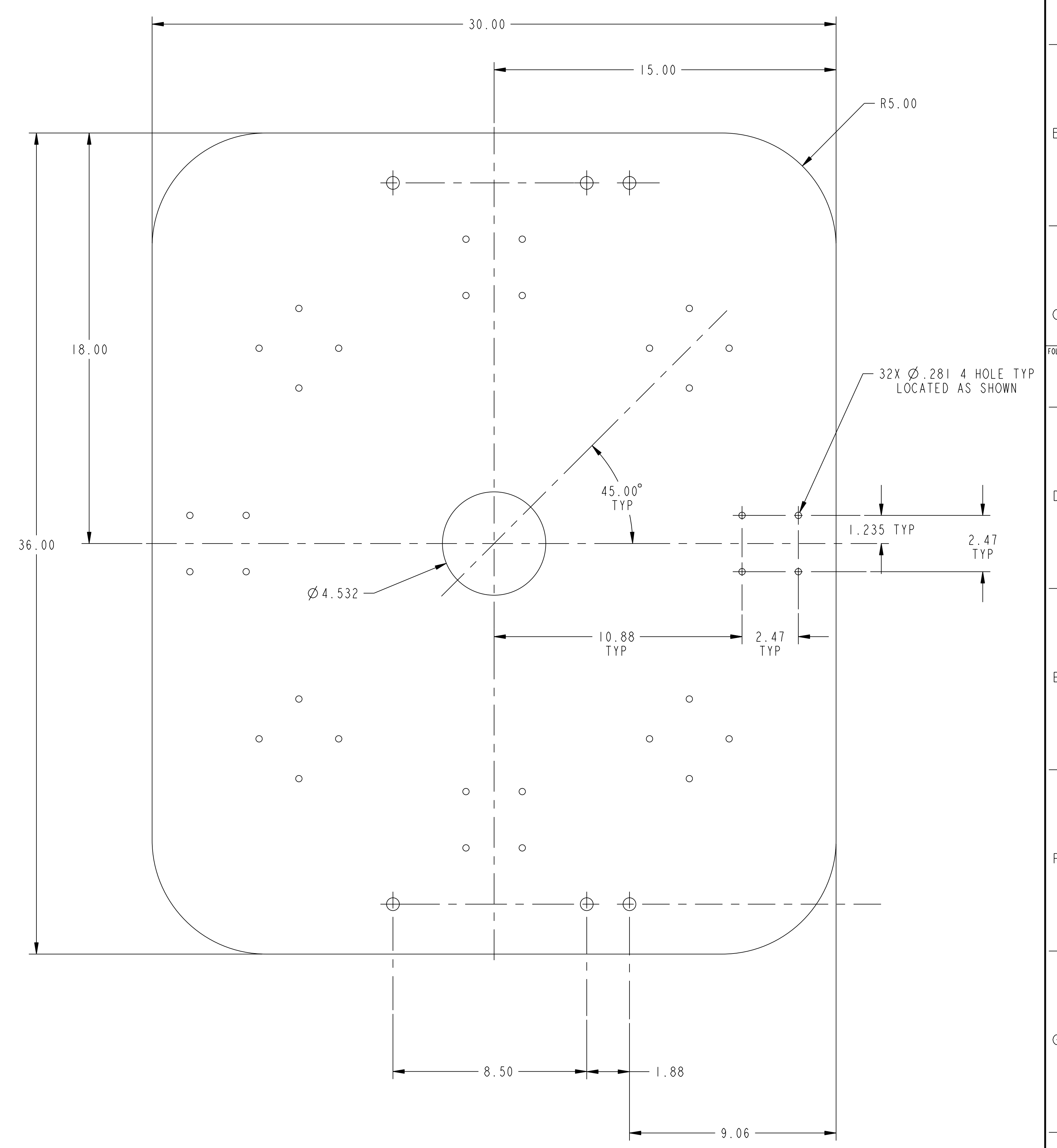
PRINCETON PLASMA PHYSICS LABORATORY
NATIONAL COMPACT STELLARATOR EXPERIMENT
IF COIL WINDING TOOL
CONDUCTOR FEED TABLE ASSEMBLY
WITH MISC. DETAILS
TOLERANCES NON-CUMULATIVE
DECIMAL-INCH FRACTIONS
DO NOT VERIFY INFORMATION BY SCALING DRAWING
BREAK SHARP EDGES .005/.020
DSN: B. PAUL 8/15/05
CHK: M. KALISH 8/15/05
ENGR: J. CHRZANOWSKI 8/15/05
SUPV: J. SEIGEL 8/15/05
DRAWING NO: SE1312-020
SHEET 1 OF 2
REV 0

NCSX-SEI 1312-020

NO.	REVISION	BY	CH	SUP	APPROVED	DATE



① CONDUCTOR TABLE



② TABLE TOP

**RELEASED FOR
FABRICATION / INSTALLATION**
PPPL Drafting:

RELEASE LEVEL: Fabrication
DWG VERSION NO: 6

WEIGHT	239.4 lbs
MODEL NAME	SE1312-020
WELDING ENGINEER	R. KEILBACH

COMPUTER GENERATED DRAWING MANUAL CHANGES NOT PERMITTED Pro E	CENTRAL FILES: UNLESS OTHERWISE SPECIFIED DIMENSIONS ARE IN INCHES MACHINE SURFACES BREAK SHARP EDGES .005/.020	PRINCETON PLASMA PHYSICS LABORATORY PRINCETON UNIVERSITY NATIONAL COMPACT STELLARATOR EXPERIMENT IF COIL WINDING ROOM CONDUCTOR FEED TABLE MISC. DETAILS	
DO NOT VERIFY INFORMATION BY SCALING DRAWING	TOLERANCES NON-CUMULATIVE	DSN: B. PAUL 8/15/05	DRAWING NO:
NEXT ASSEMBLY	DECIMAL-INCH FRACTIONS	CHK: M. KALISH 8/15/05	SE1312-020
	.XX +/- .000 0°-120° +/- .004 .XXX +/- .005 120°-120° +/- .004 ANGULAR +/- 0°-15° OVER 120° +/- .172	ENGR: J. CHRZANOWSKI 8/15/05	SHEET 2 OF 2
		SUPV: J. SEIGEL 8/15/05	REV 0

NCSX-SET 1312-020