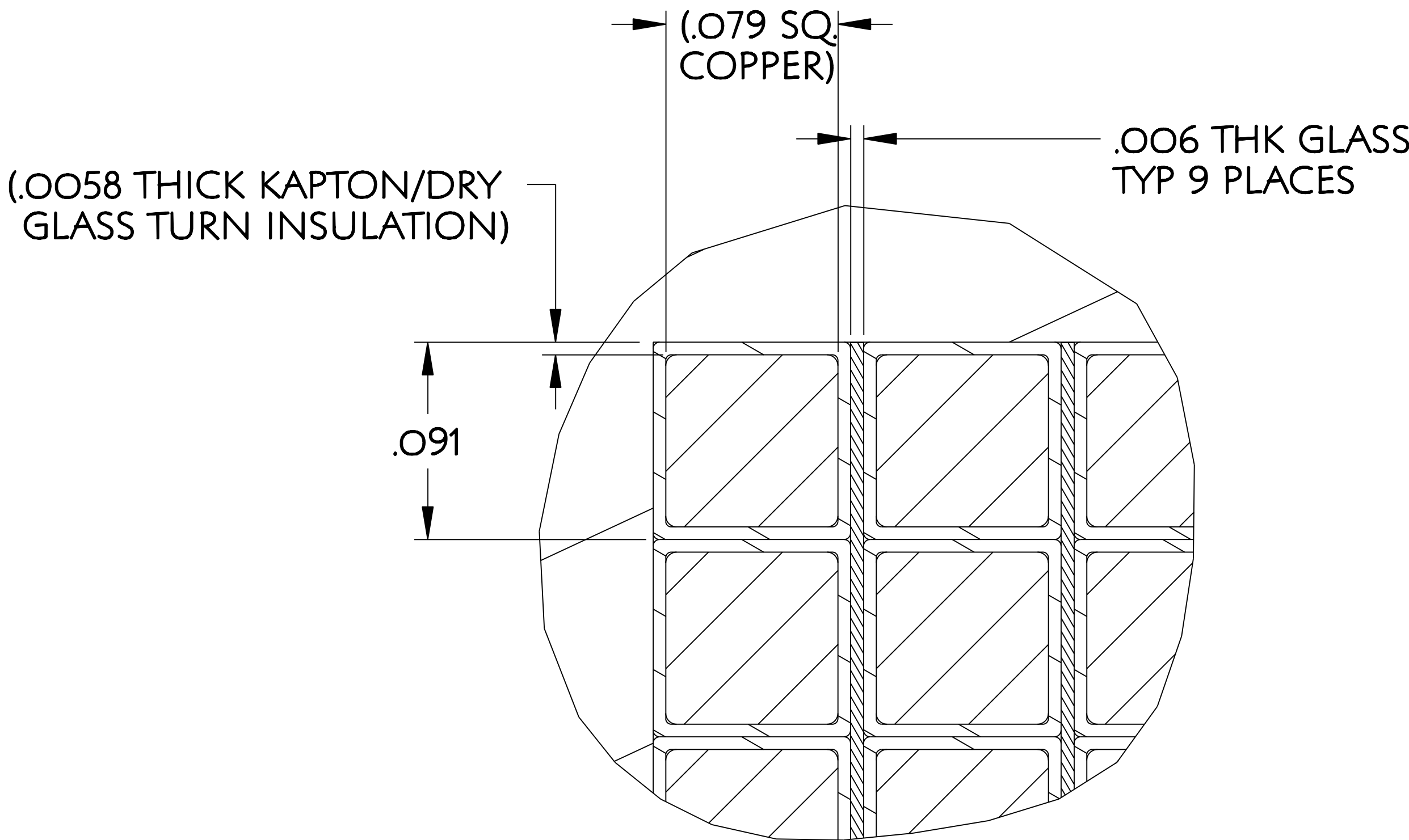
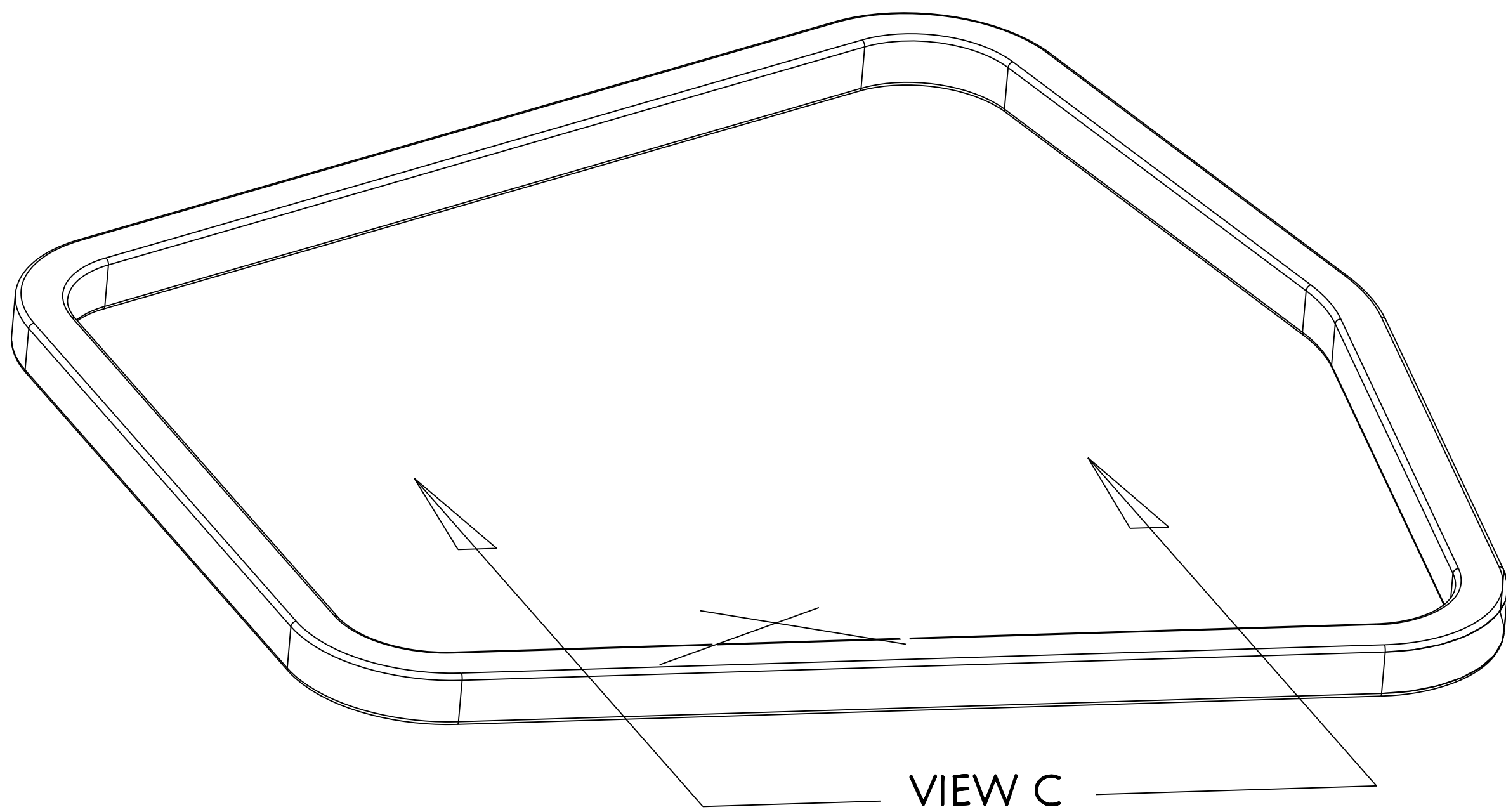
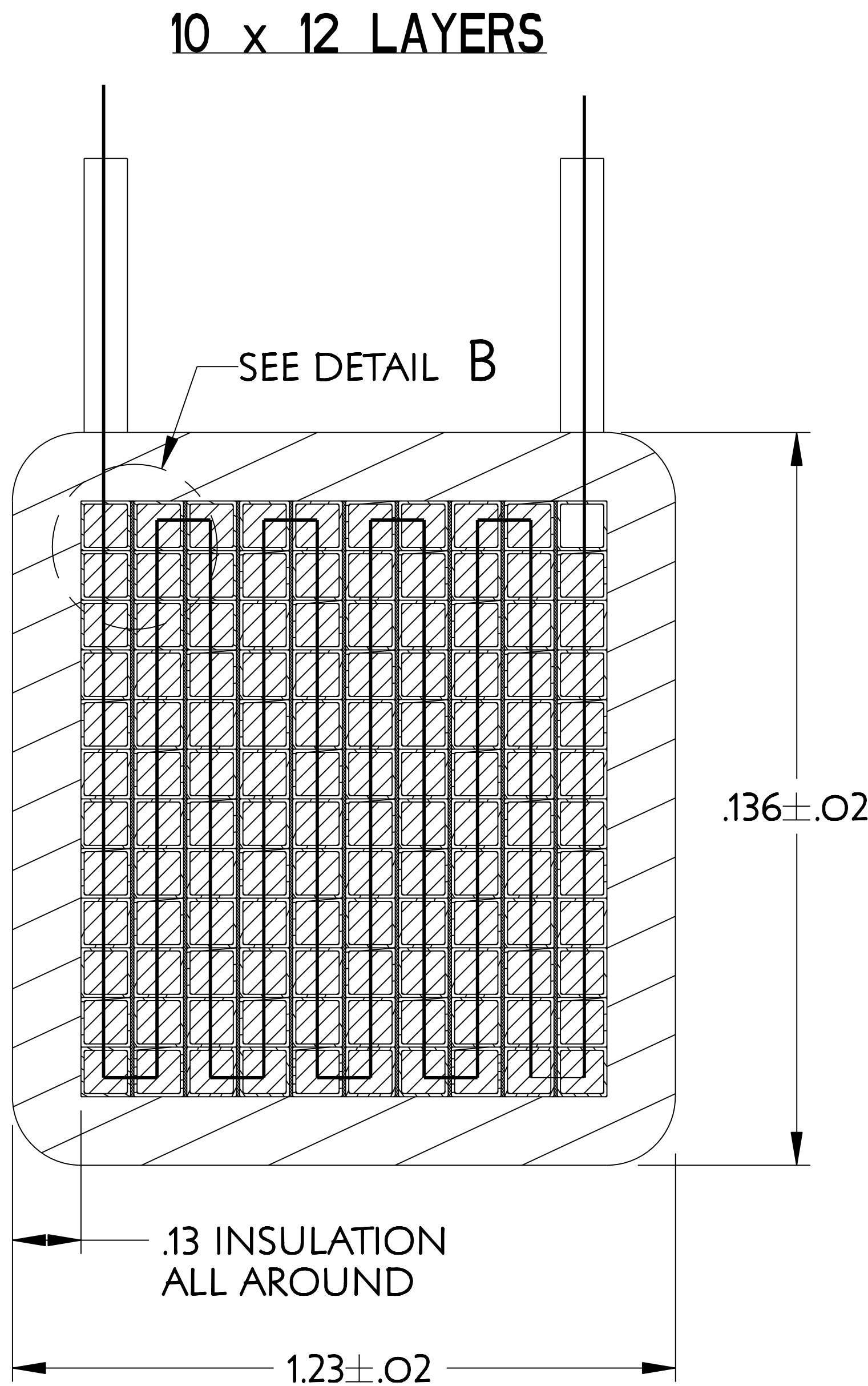
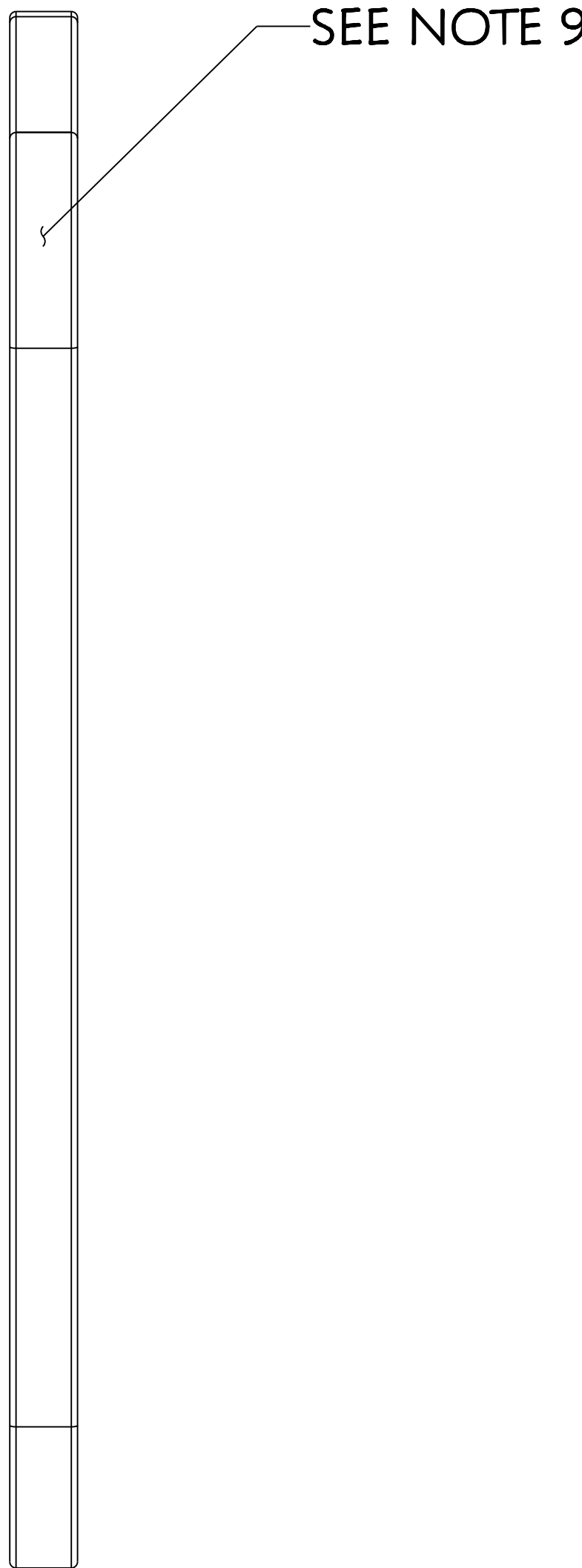
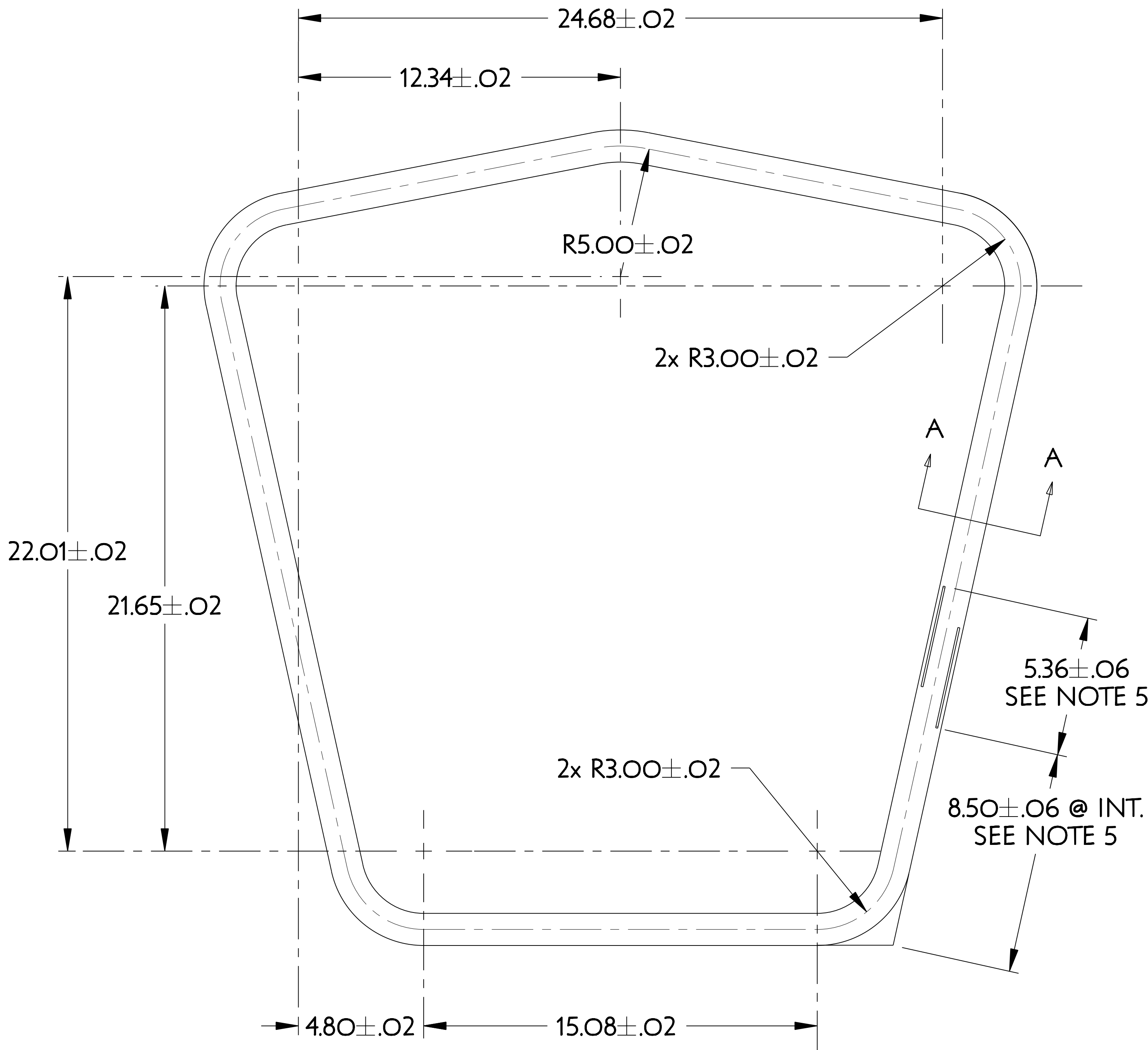


NO.	REVISION	BY	CH	SUP	APPROVED	DATE



DETAIL B  
SCALE 20



SECTION A-A

NOTES:

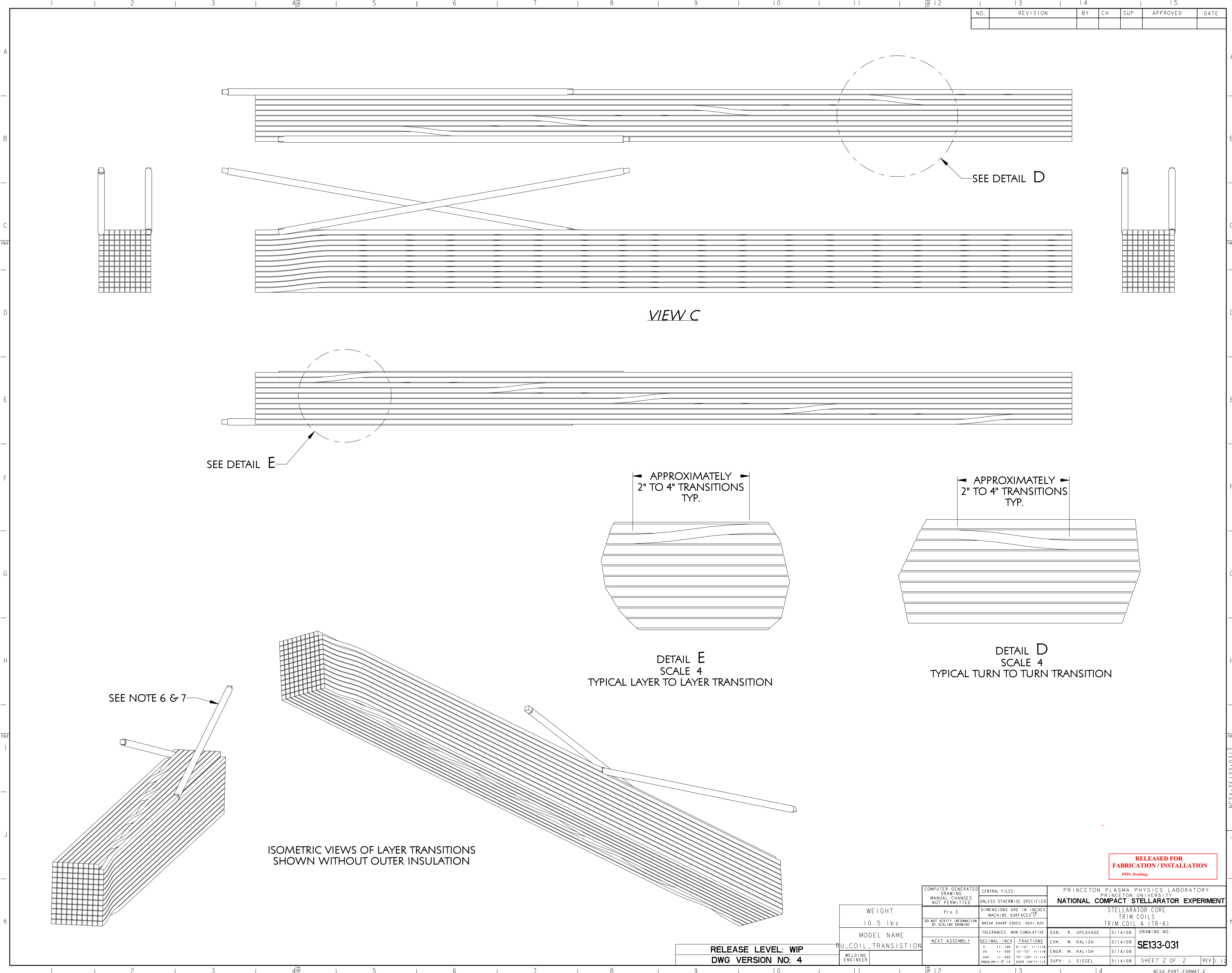
1. DRAWINGS PREPARED IN ACCORDANCE WITH ASME Y14.100-2000
2. INTERPRET DIMENSIONS & TOLERANCES PER ASME Y14.5-1994.
3. DIMENSIONS ARE IN INCHES.
4. SEE SPECIFICATION NCSX-CSPEC-133-01 FOR ADDITIONAL INFORMATION AND/OR MATERIAL REQUIREMENTS.
5. WIRE LEAD STARTS TO PROTRUDE BEYOND OUTSIDE SURFACE AT THIS POINT.
6. LEADS TO PROTRUDE FROM GROUND WRAP A MINIMUM OF 6 INCHES.
7. SLEEVE LEAD WITH TWO LAYERS OF PTFE HEAT SHRINK TUBING TO A MINIMUM OF 1/2" UNDER THE GROUND WRAP AS SPECIFIED IN NCSX-CSPEC-133-01.
8. LEADS TO BE FRIMLY ATTACHED TO THE COIL BODY USING A METHOD APPROVED BY PPPL FOR PROTECTION DURING SHIPMENT.
9. LABEL PER NCSX CSPEC-133-01.

RELEASED FOR  
FABRICATION / INSTALLATION  
PPPL Drafting:

COMPUTER GENERATED DRAWING MANUAL CHANGES NOT PERMITTED Pro E	CENTRAL FILES: UNLESS OTHERWISE SPECIFIED DIMENSIONS ARE IN INCHES MACHINE SURFACES B BREAK SHARP EDGES .005/.020	PRINCETON PLASMA PHYSICS LABORATORY NATIONAL COMPACT STELLARATOR EXPERIMENT			
		STELLARATOR CORE TRIM COILS TRIM COIL A (TR-A)			
DO NOT VERIFY INFORMATION BY SCALING DRAWING	TOLERANCES NON-CUMULATIVE DECIMAL-INCH FRACTIONS .X .XX .XXX ANGULAR OVER	DSN: R. UPCAUGE CHK: M. KALISH ENGR: M. KALISH SUPV: J. SIEGEL	5/14/08 5/14/08 5/14/08 5/14/08	DRAWING NO: <b>SE133-031</b>	
WEIGHT 170.3 lbs	MODEL NAME TC133-031	WELDING ENGINEER	RELEASE LEVEL: WIP DWG VERSION NO: 2	SHEET 1 OF 2	REV B.12

NCSX-SE 133-031





NO.	REVISION	BY	CH	SUP	APPROVED	DATE

VIEW C

SEE DETAIL E

SEE DETAIL D

APPROXIMATELY  
2" TO 4" TRANSITIONS  
TYP.

APPROXIMATELY  
2" TO 4" TRANSITIONS  
TYP.

DETAIL E  
SCALE 4  
TYPICAL LAYER TO LAYER TRANSITION

DETAIL D  
SCALE 4  
TYPICAL TURN TO TURN TRANSITION

SEE NOTE 6 & 7

ISOMETRIC VIEWS OF LAYER TRANSITIONS  
SHOWN WITHOUT OUTER INSULATION

RELEASED FOR  
FABRICATION / INSTALLATION  
PPPL Drafting

RELEASE LEVEL: WIP  
DWG VERSION NO: 4

WEIGHT 10.5 lbs
MODEL NAME TRIM COIL TRANSITION
WELDING ENGINEER

COMPUTER GENERATED DRAWING MANUAL CHANGES NOT PERMITTED Pro E	CENTRAL FILES: UNLESS OTHERWISE SPECIFIED DIMENSIONS ARE IN INCHES MACHINE SURFACES UNLESS OTHERWISE SPECIFIED BREAK SHARP EDGES .005/.020	PRINCETON PLASMA PHYSICS LABORATORY PRINCETON UNIVERSITY NATIONAL COMPACT STELLARATOR EXPERIMENT STELLARATOR CORE TRIM COILS TRIM COIL A (TR-A)
DO NOT VERIFY INFORMATION BY SCALING DRAWING	TOLERANCES NON-CUMULATIVE DECIMAL-INCH FRACTIONS .X +/- .100 0°-120° +/- 1/16 .XX +/- .030 12°-72° +/- 1/8 .XXX +/- .005 72°-120° +/- 1/4 ANGULAR +/- 0°-15' OVER 120° +/- 1/2	DSN: R. UPCAVAGE 5/14/08 DRAWING NO: CHK: M. KALISH 5/14/08 ENGR: M. KALISH 5/14/08 SUPV: J. SIEGEL 5/14/08
NEXT ASSEMBLY		SHEET 2 OF 2 REV D, 12

NCSX-SE 133-031

NCSX-PART-FORMAT\_E