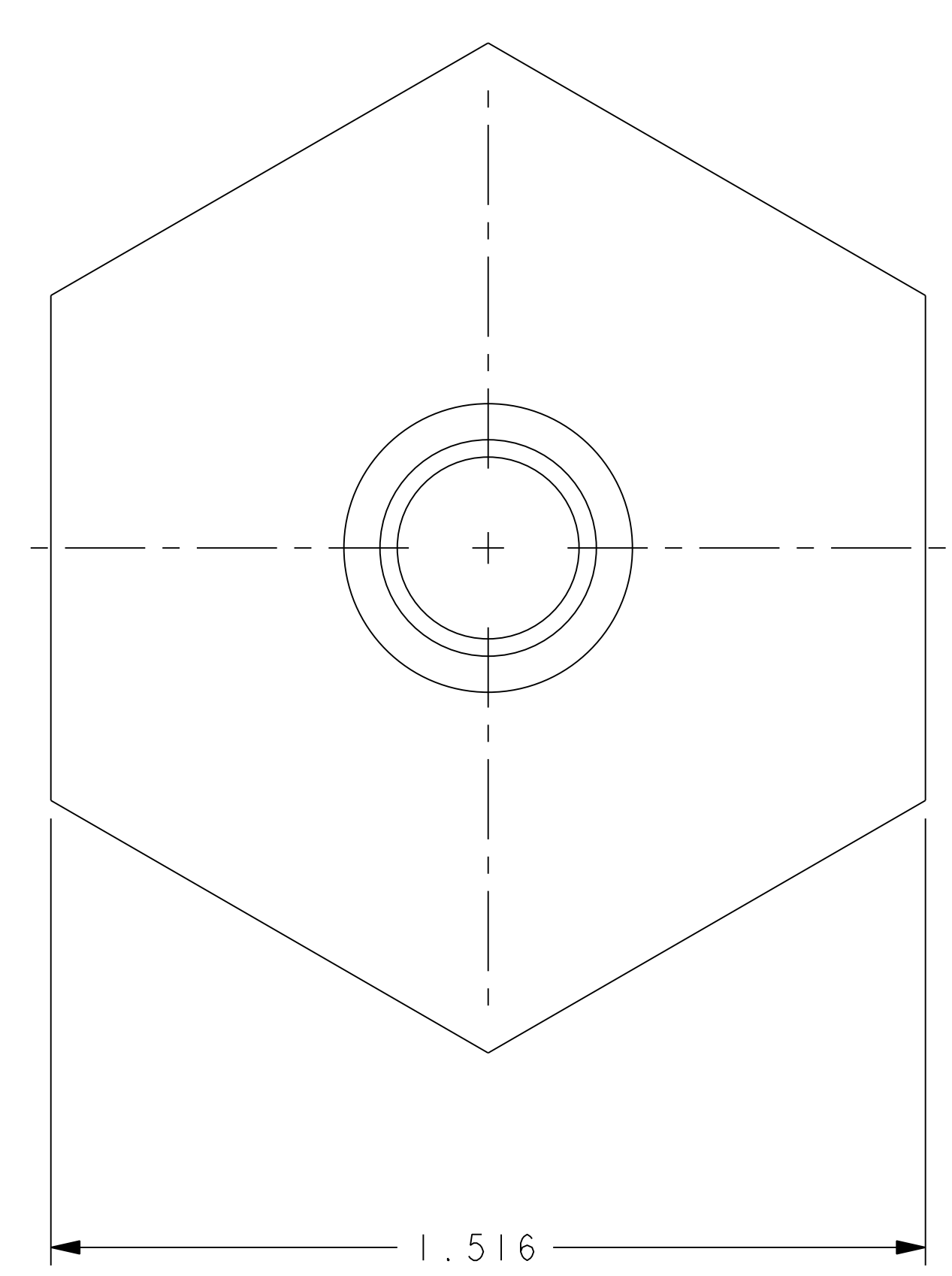
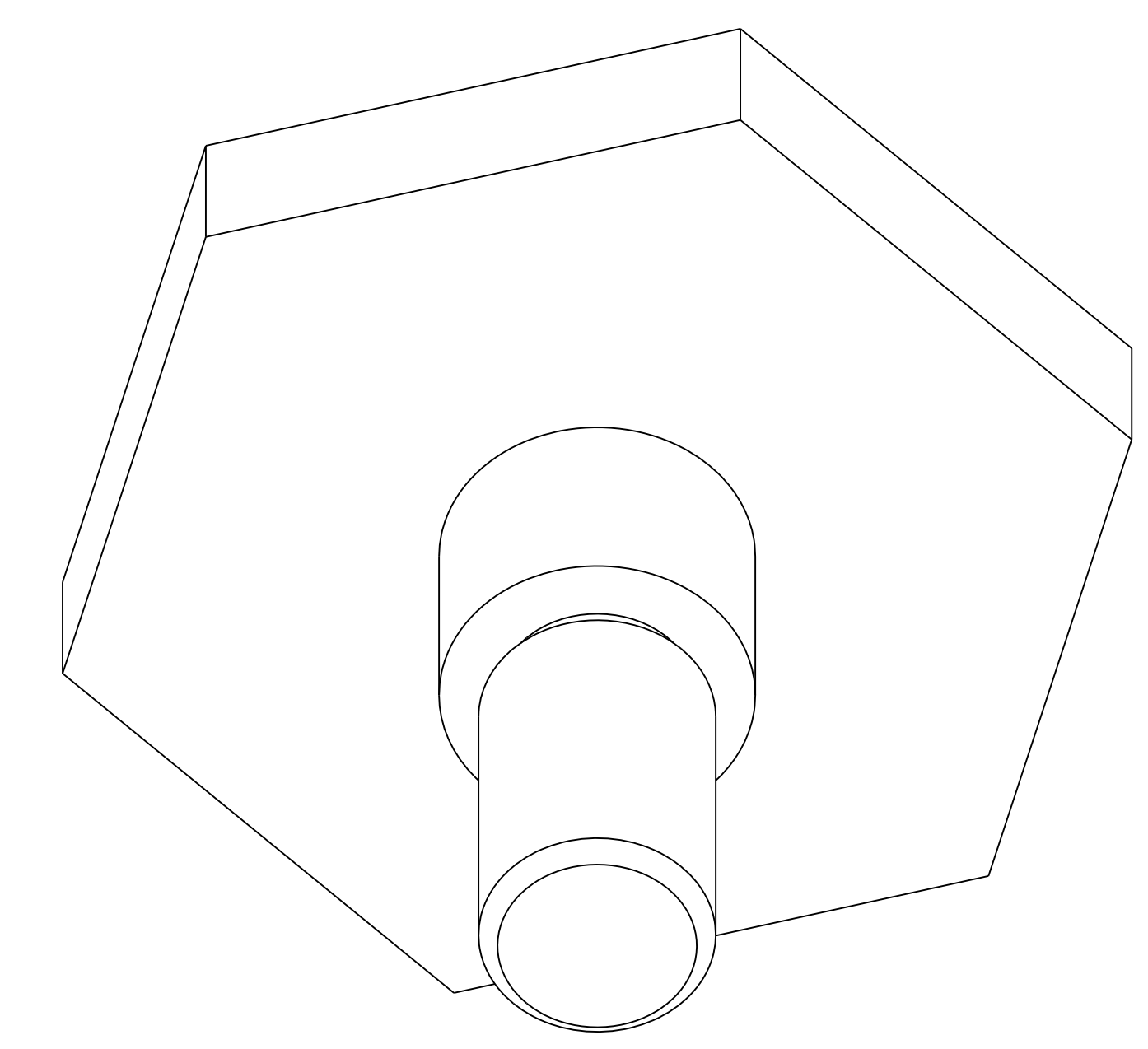
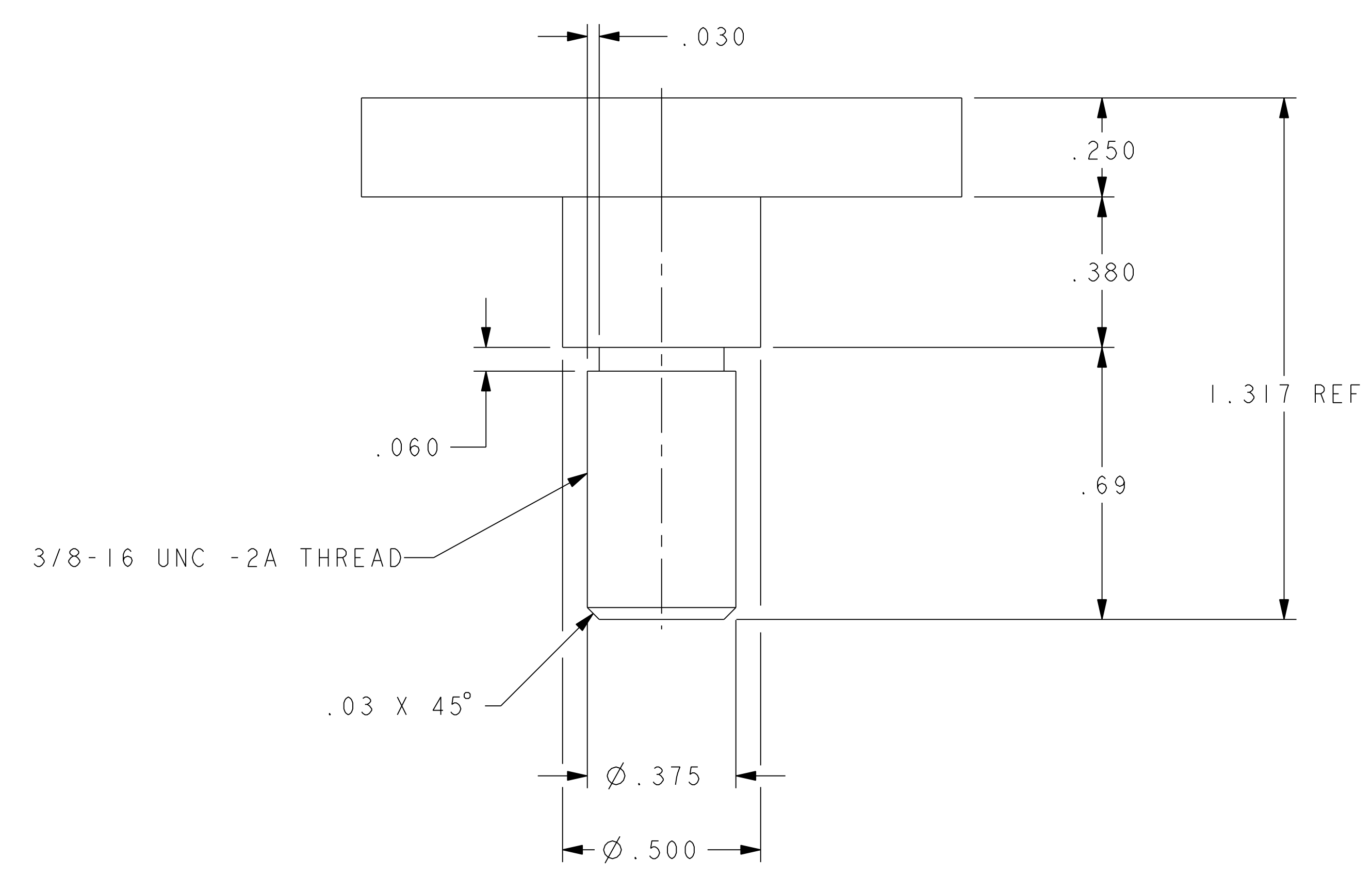


NO.	REVISION	BY	CH	SUP	APPROVED	DATE



RELEASED FOR FABRICATION/INSTALLATION  
PPPL Drafting

NOTES:  
1. MATERIAL: INCONEL 625, COLD ROLLED 20% REDUCTION, 110 KSI YIELD.

RELEASE LEVEL: Fabrication  
DWG VERSION NO: 8

WEIGHT	0.8 lbs
MODEL NAME	SE133-074
WELDING ENGINEER	

PART NO.	SE133-074	NOMENCLATURE OR DESCRIPTION	BRACKET SUPPORT	MATERIAL	INCONEL 625	QTY	48
PARTS LIST							
COMPUTER GENERATED DRAWING MANUAL CHANGES NOT PERMITTED Pro E	CENTRAL FILES: UNLESS OTHERWISE SPECIFIED	PRINCETON PLASMA PHYSICS LABORATORY PRINCETON UNIVERSITY NATIONAL COMPACT STELLARATOR EXPERIMENT					
DO NOT VERIFY INFORMATION BY SCALING DRAWING	DIMENSIONS ARE IN INCHES MACHINE SURFACES BREAK SHARP EDGES .005/.020	STELLARATOR CORE TRIM COILS BRACKET SUPPORT					
NEXT ASSEMBLY	TOLERANCES NON-CUMULATIVE DECIMAL-INCH FRACTIONS .XX +/- .000 0°-12° +/- .010 .XXX +/- .005 12°-120° +/- .010 ANGULAR +/- .0°-15° OVER 120° +/- .120	DSN: R. UPCAVALAGE	6/11/08	DRAWING NO:	SE133-074		
		CHK: M. KALISH	6/11/08	ENGR: M. KALISH	6/11/08	SHEET 1 OF 1	REV 0.5
		SUPV: J. SIEGEL	6/11/08				

NCSX-SE133-074