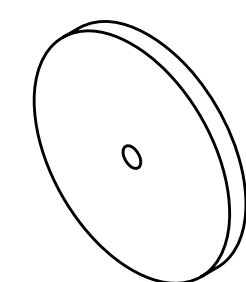
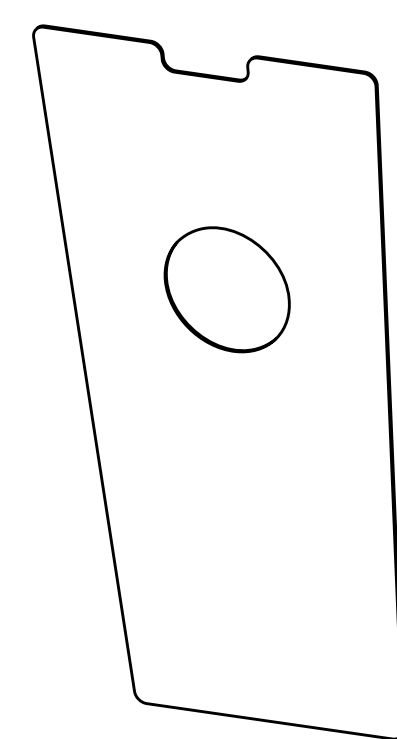


ISOMETRIC VIEW
SCALE 0.50

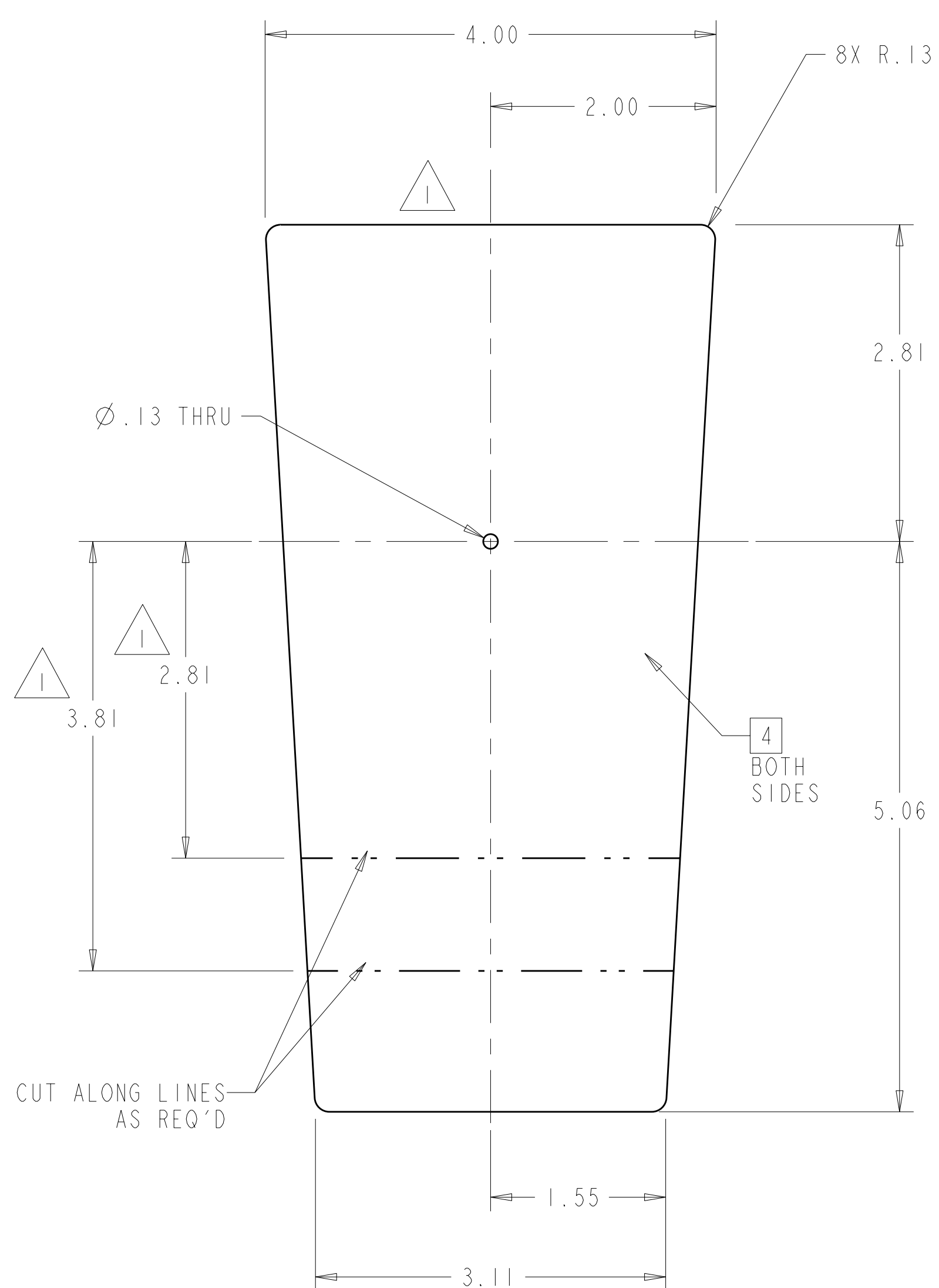


ISOMETRIC VIEW
SCALE 1.00



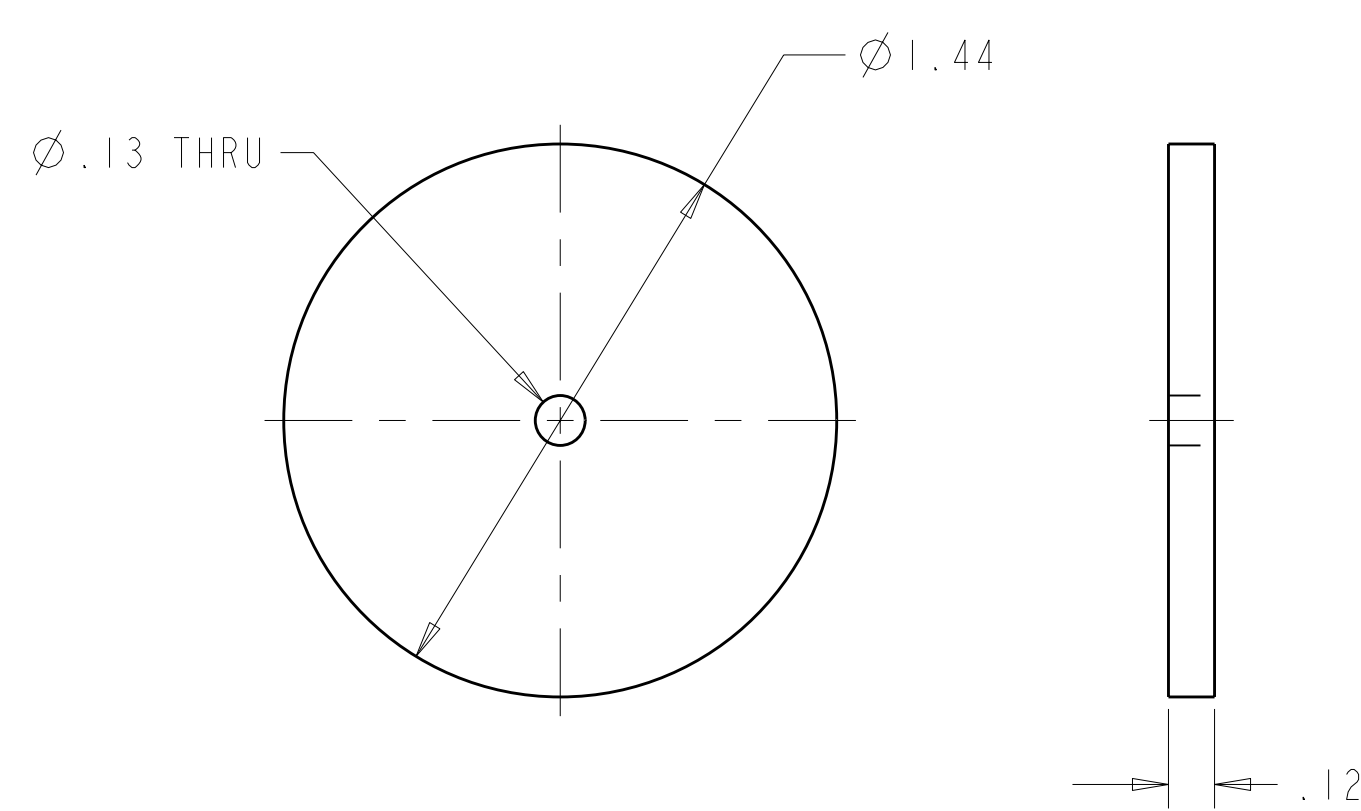
ISOMETRIC VIEW
SCALE 0.50

- NOTES
- DRAWING PREPARED IN ACCORDANCE WITH ASME Y14.100-2004.
 - INTERPRET DIMENSIONS AND TOLERANCES PER ASME Y14.5M-1994.
 - DIMENSIONS ARE IN INCHES
 - MATERIAL TO BE LIGHTLY SANDED TO REMOVE GLASSY SHEEN BUT MAY NOT EXPOSE ANY MATERIAL FIBERS. SANDING WITHIN 1/2" PERIMETER OF EDGE TO ACHIEVE FLATNESS IS ACCEPTABLE.



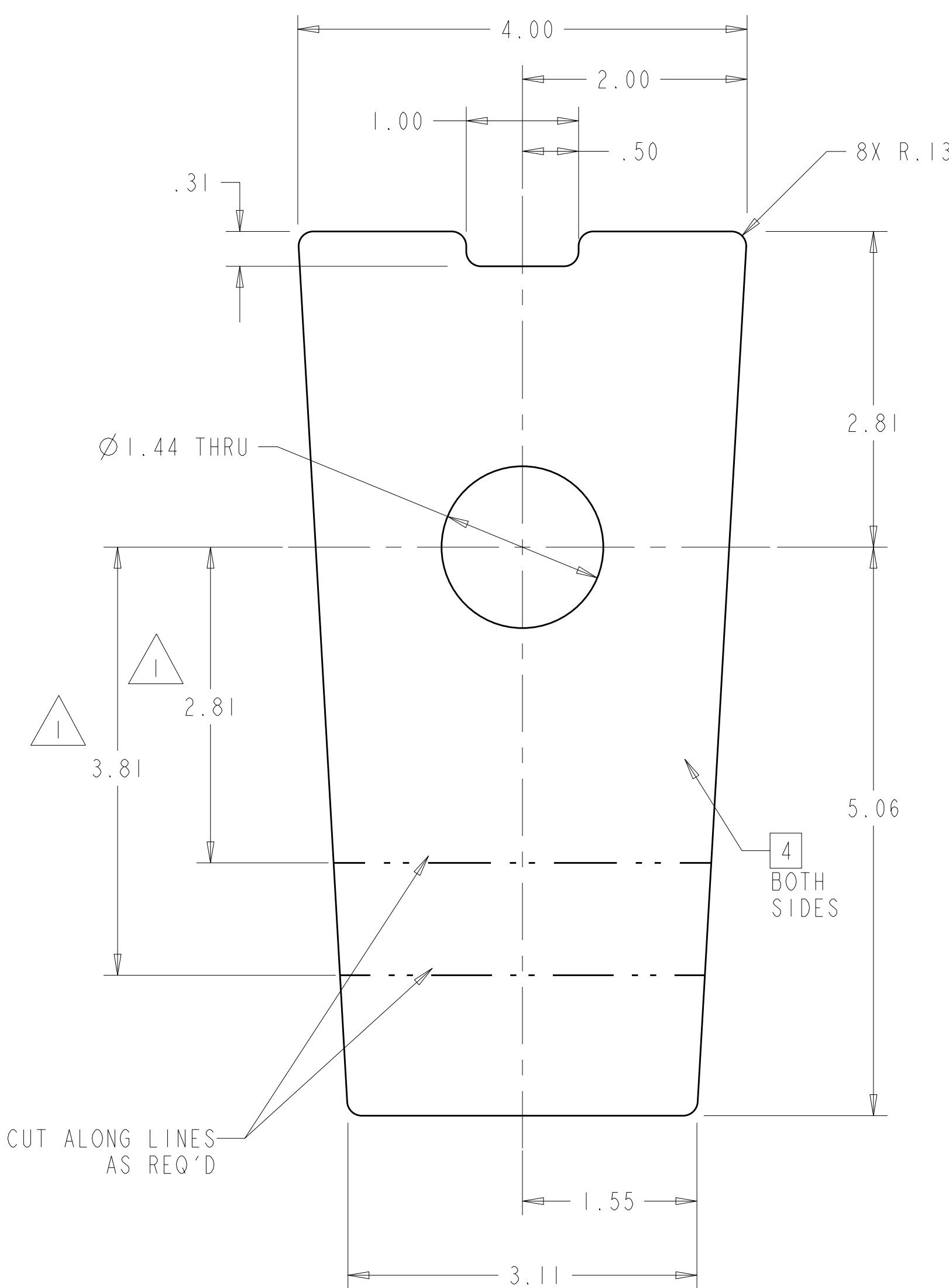
3 NO BOLT SHIM PLATE INSULATOR
SCALE 1.00

NOTE: PART TO BE CUT FROM FULL SIZE TEMPLATE CREATED BY DXF FILE SE140-043.DXF, SEE SHEET 2.



2 SHIM INSULATOR RETAINER
SCALE 2.00

NOTE: PART MAY BE CUT FROM FULL SIZE TEMPLATE CREATED BY DXF FILE SE140-043.DXF, SEE SHEET 2.



1 SHIM PLATE INSULATOR
SCALE 1.00

NOTE: PART TO BE CUT FROM FULL SIZE TEMPLATE CREATED BY DXF FILE SE140-043.DXF, SEE SHEET 2.

.062	-25	-45
.047	-24	-44
.031	-23	-43
.025	-22	-42
.020	-21	-41
.015	-20	-40
DIM A THICKNESS OF G10 ±.001	PART NO FOR F/N -1	PART NO FOR F/N -3

CAGE CODE	PART OR IDENTIFYING NO	NOMENCLATURE OR DESCRIPTION	MATERIAL	SPECIFICATION	FIND NO
AR	SEE CHART	NO BOLT SHIM PLATE INSULATOR			3
AR	-2	SHIM INSULATOR RETAINER	G10 [4]	NEMA GRADE FR OR CR	2
AR	SEE CHART	SHIM PLATE INSULATOR			1

← NEXT ASSEMBLY

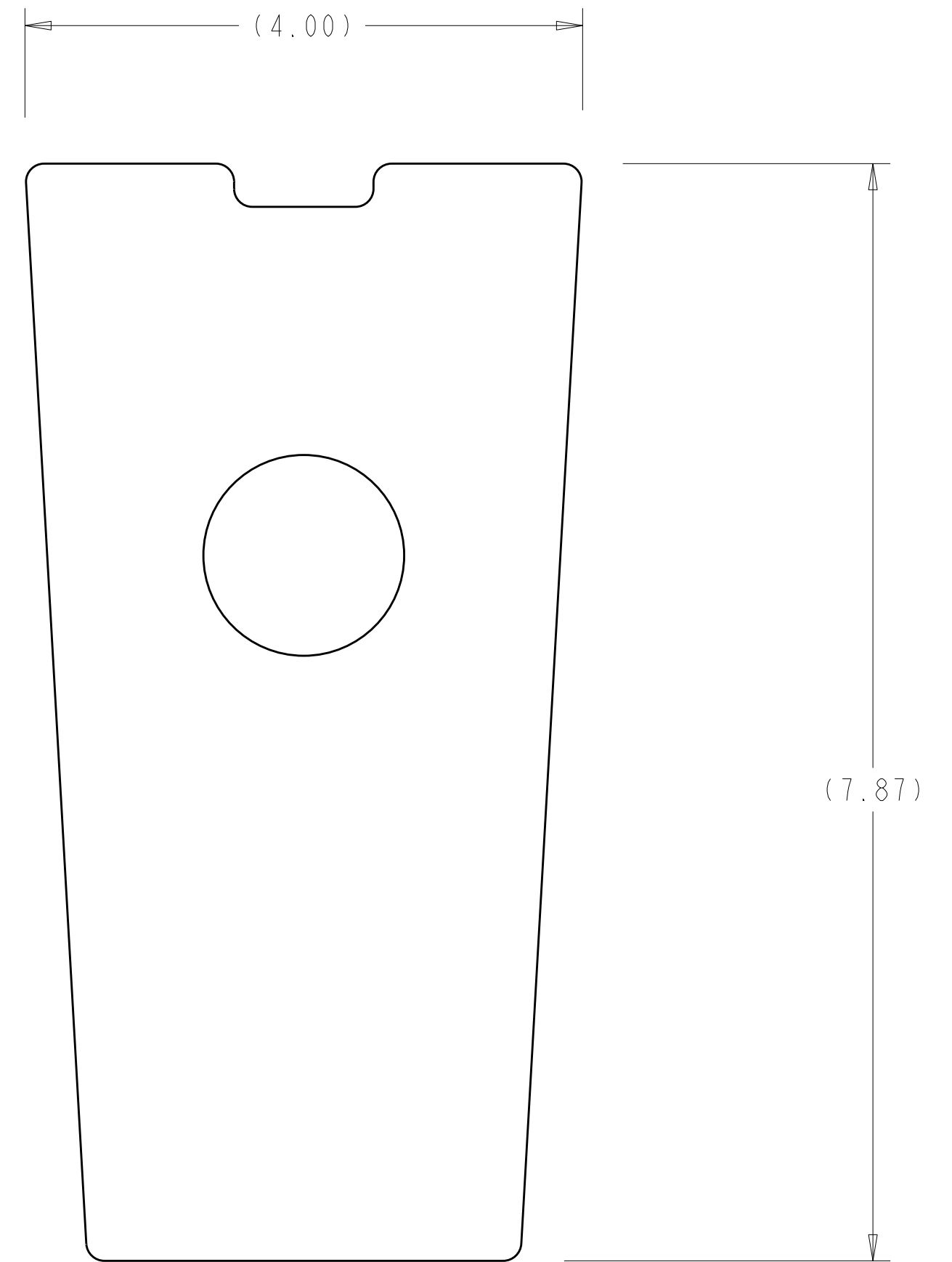
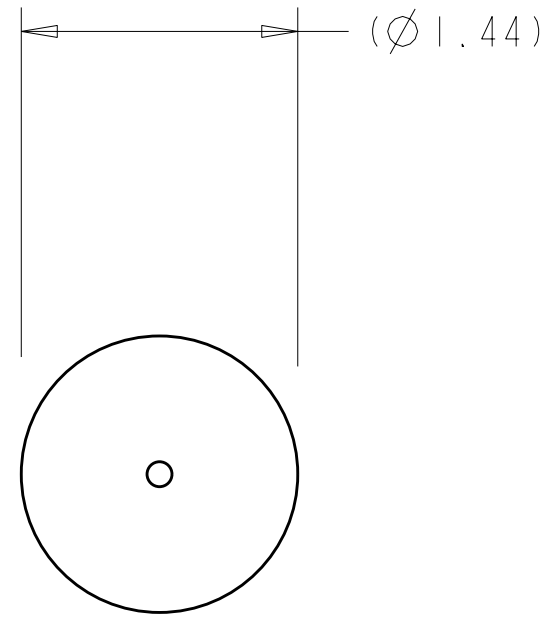
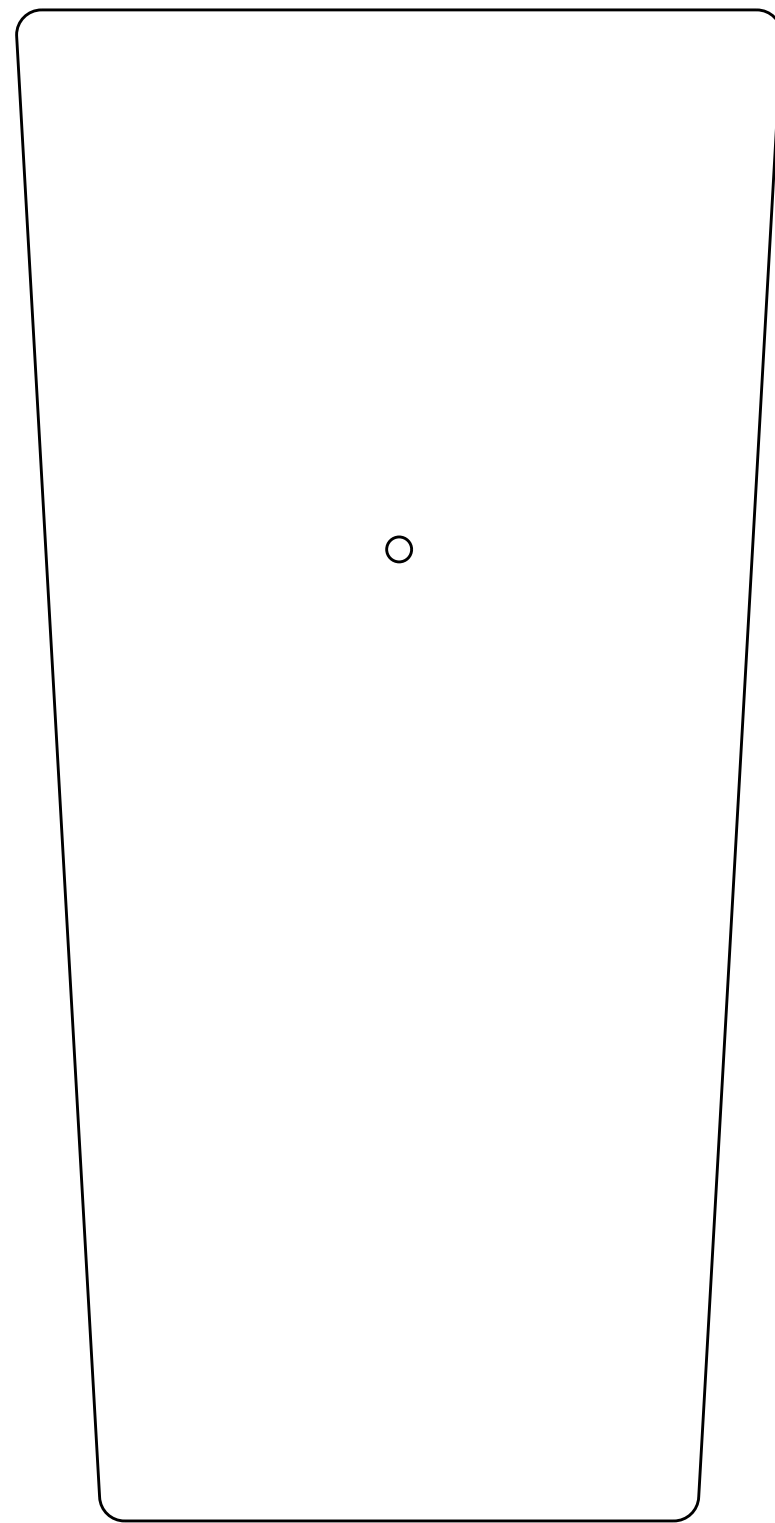
PARTS LIST

RELEASED FOR FABRICATION / INSTALLATION
PPPL Drafting:

NO REPRESENTATION OR WARRANTY, EXPRESSED OR IMPLIED, IS MADE AS TO THE ACCURACY, COMPLETENESS OR USEFULNESS OF THE INFORMATION OR STATEMENTS CONTAINED IN THESE DRAWINGS, OR THAT THE USE OR DISCLOSURE OF ANY INFORMATION, APPARATUS, METHOD OR PROCESS DISCLOSED IN THESE DRAWINGS MAY NOT INFRINGE PRIVATE RIGHTS OF OTHERS. NO LIABILITY IS ASSUMED WITH RESPECT TO THE USE OF, OR FOR DAMAGES RESULTING FROM THE USE OF, ANY INFORMATION, APPARATUS, METHOD OR PROCESS DISCLOSED IN THESE DRAWINGS. DRAWINGS MADE AVAILABLE FOR INFORMATION TO BIDDER ARE NOT TO BE USED FOR OTHER PURPOSES, AND ARE TO BE RETURNED UPON REQUEST OF THE FORWARDING CONTRACTOR.

P THIS DRAWING PRODUCED ON PRO-ENGINEER

SCALE NOTED		DES: D WILLIAMSON 02/2008	Oak Ridge National Laboratory managed for the DEPARTMENT OF ENERGY under U.S. GOVERNMENT CONTRACT DE-AC05-00OR22725 UT-BATTELLE, LLC, Oak Ridge, Tennessee	
TOLERANCES UNLESS OTHERWISE SPECIFIED		DRW: G MCGINNIS 02/2008	UT-BATTELLE	
FRACTIONS		CHK: M COLE 02/2008	PROJECT NAME: NATIONAL COMPACT STELLARATOR EXPERIMENT	
XX DECIMALS ±.01		SECT: :	SHIM PLATE DETAILS	
XXX DECIMALS ±.005		DEPT: :	VERSION NO. 1	
ANGLES ±0°15'		PE: :	PLANT ORNL	
BREAK SHARP EDGES OR MAX FINISH .125 UNLESS OTHERWISE SPECIFIED		CR: :	BLDG 5700	
		PJ: :	FL 3	
		RD: :	SHT 1	
		PPPL DRFT J SIEGEL 02/2008	OF 2	
			TYPE S	
			CLASS U	
			RELEASE LEVEL Fabrication	
			SE140-043	
			REV 1	
REV DESCRIPTION BY DATE CHK DEPT DATE PE REQ DATE ORNL DOC DATE		DRAWING APPROVALS DATE		
REVISION OR ISSUE PURPOSE		REVISION APPROVAL		



FULL SIZE TEMPLATE - CREATED FROM DXF FILE SE140-043.DXF
 SCALE 1 : 1

NOTE: PART SIZES AND HOLE LOCATIONS MUST NOT DEVIATE FROM
 DXF FILE BY MORE THAN ± .01

**RELEASED FOR
 FABRICATION / INSTALLATION**
 PPPL Drafting:

UT-BATTELLE		Oak Ridge National Laboratory managed for the DEPARTMENT OF ENERGY under U. S. GOVERNMENT contract DE-AC05-000R22725 UT-BATTELLE, LLC. Oak Ridge, Tennessee					
PROJECT NAME NATIONAL COMPACT STELLARATOR EXPERIMENT							
SHIM PLATE DETAILS							
VERSION NO. 1	PLANT ORNL	BLDG 5700	FL 3	SHT OF 2 2	TYPE S	CLASS U	
RELEASE LEVEL Fabrication		SE140-043				REV 1	