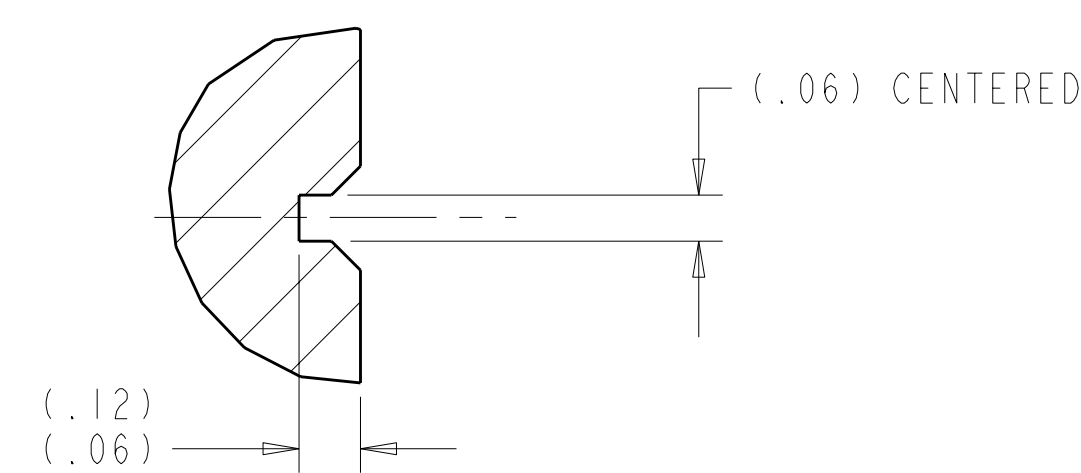
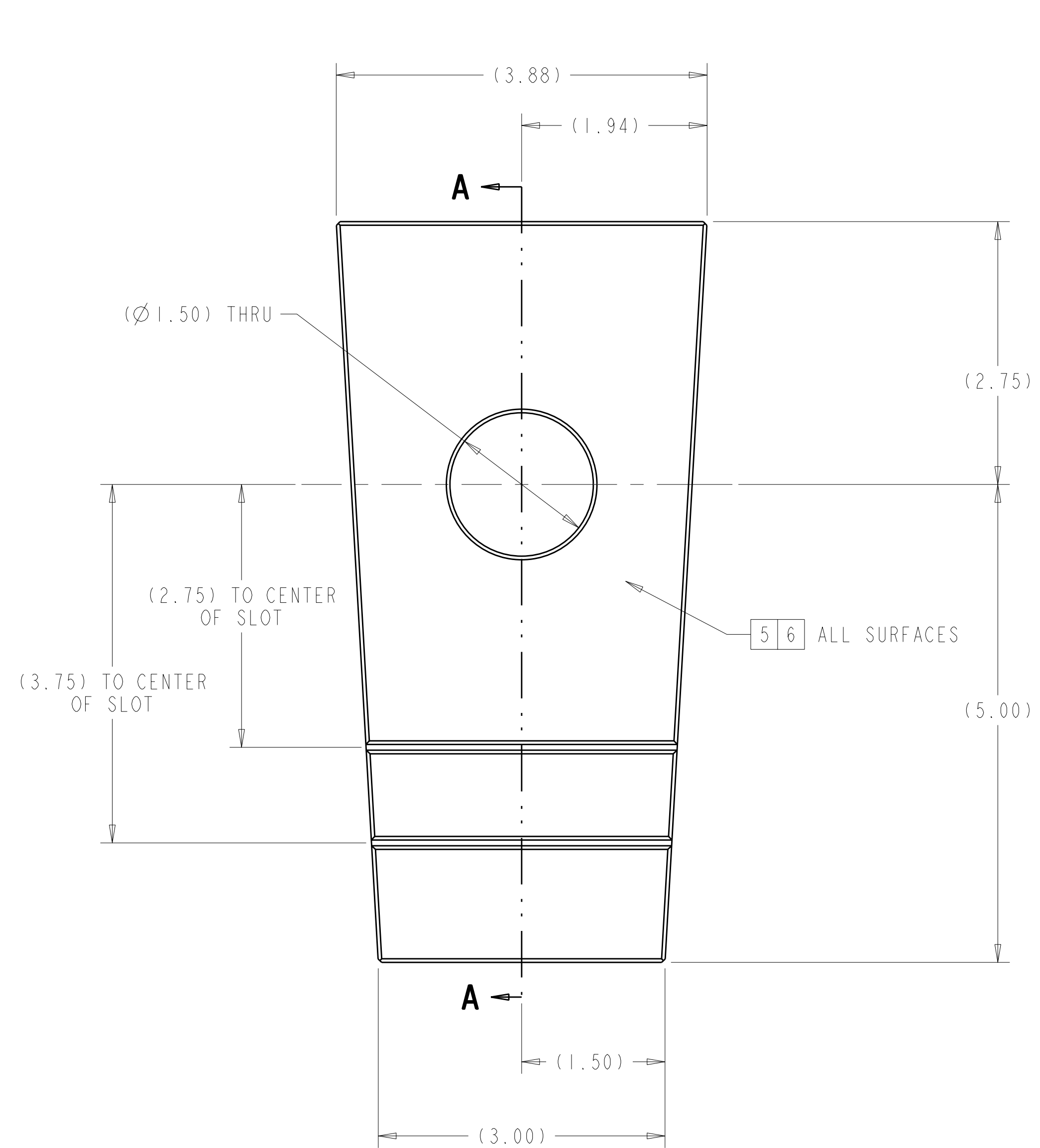


TOTAL 214

AR	.546	.541	.553	.532	-57
AR	.544	.539	.551	.530	-56
AR	.542	.537	.549	.528	-55
I	.540	.535	.547	.526	-54
I	.538	.533	.545	.524	-53
I	.536	.531	.543	.522	-52
I	.534	.529	.541	.520	-51
2	.532	.527	.539	.518	-50
2	.530	.525	.537	.516	-49
3	.528	.523	.535	.514	-48
4	.526	.521	.533	.512	-47
5	.524	.519	.531	.510	-46
6	.522	.517	.529	.508	-45
7	.520	.515	.527	.506	-44
8	.518	.513	.525	.504	-43
9	.516	.511	.523	.502	-42
10	.514	.509	.521	.500	-41
10	.512	.507	.519	.498	-40
11	.510	.505	.517	.496	-39
12	.508	.503	.515	.494	-38
12	.506	.501	.513	.492	-37
12	.504	.499	.511	.490	-36
12	.502	.497	.509	.488	-35
11	.500	.495	.507	.486	-34
11	.498	.493	.505	.484	-33
10	.496	.491	.503	.482	-32
9	.494	.489	.501	.480	-31
8	.492	.487	.499	.478	-30
7	.490	.485	.497	.476	-29
6	.488	.483	.495	.474	-28
5	.486	.481	.493	.472	-27
4	.484	.479	.491	.470	-26
4	.482	.477	.489	.468	-25
3	.480	.475	.487	.466	-24
2	.478	.473	.485	.464	-23
2	.476	.471	.483	.462	-22
1	.474	.469	.481	.460	-21
1	.472	.467	.479	.458	-20
1	.470	.465	.477	.456	-19
AR	.468	.463	.475	.454	-18
AR	.466	.461	.473	.452	-17
AR	.464	.459	.471	.450	-16
AR	.462	.457	.469	.448	-15
AR	.460	.455	.467	.446	-14
AR	.458	.453	.465	.444	-13
AR	.456	.451	.463	.442	-12
AR	.454	.449	.461	.440	-11
AR	.452	.447	.459	.438	-10
AR	.450	.445	.457	.436	-9
AR	.448	.443	.455	.434	-8
AR	.446	.441	.453	.432	-7
AR	.444	.439	.451	.430	-6
AR	.442	.437	.449	.428	-5
AR	.440	.435	.447	.426	-4
AR	.438	.433	.445	.424	-3
AR	.436	.431	.443	.422	-2
AR	.434	.429	.441	.420	-1
QTY REQ'D	DIM A FINISHED SIZE ALUMINA COATED THICKNESS PER SIDE .007 +.003 / -.002	MIN FINISHED SIZE	MAX FINISHED SIZE	THICKNESS OF SS ± .001	PART NO

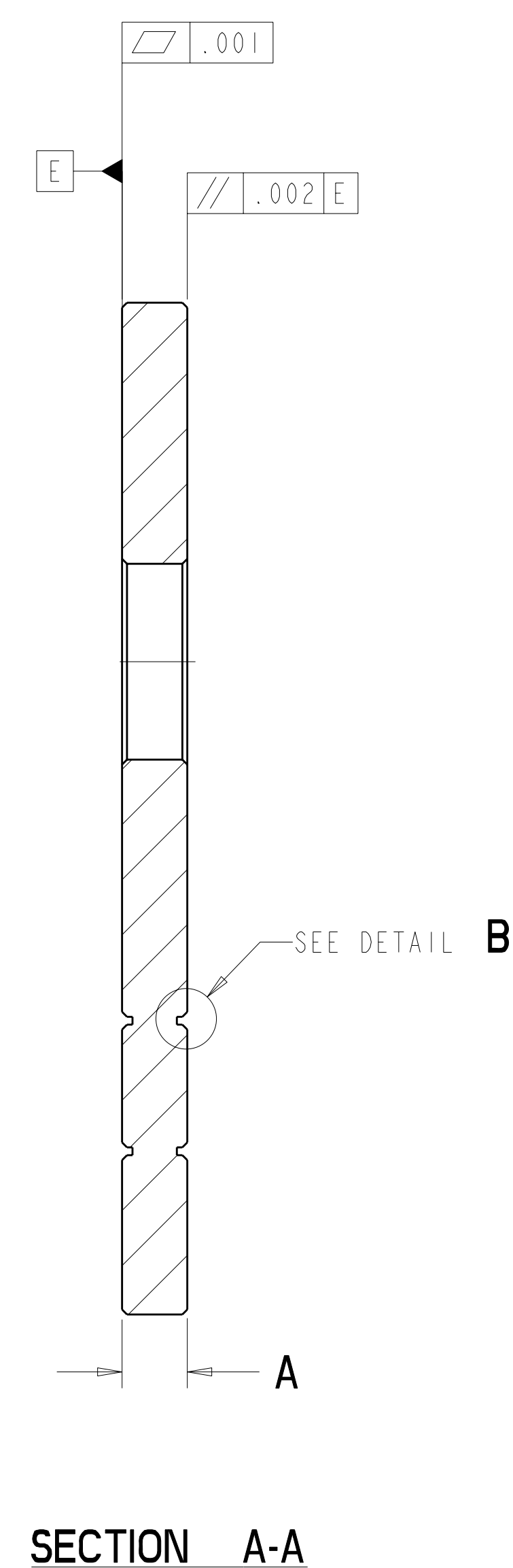


DETAIL B  
SCALE 4.00



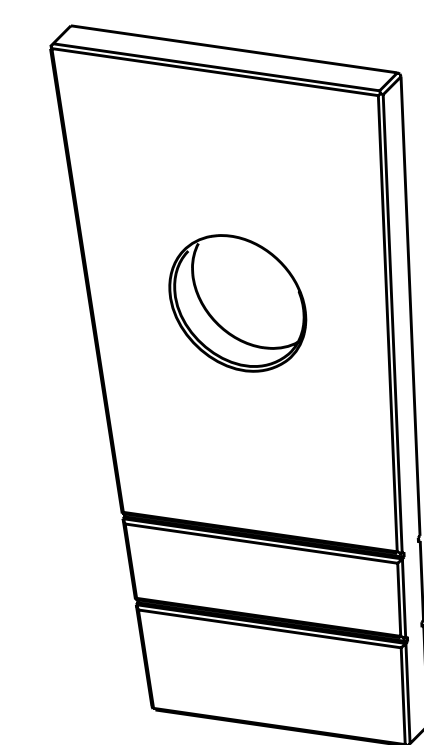
-1 SINGLE HOLE SHIM  
SCALE 1.00

NOTE: DIMENSIONS SHOWN ON THIS SHEET APPLY AFTER COATING  
SEE SHEET 2 FOR NON-COATED PART



SECTION A-A

- NOTES
1. DRAWING PREPARED IN ACCORDANCE WITH ASME Y14.100-2004.
  2. INTERPRET DIMENSIONS AND TOLERANCES PER ASME Y14.5M-1994.
  3. DIMENSIONS ARE IN INCHES
  4. MAGNETIC PERMEABILITY NOT TO EXCEED 1.02 AS TESTED BY A SEVERN INDICATOR. AVAILABLE FROM:  
SEVERN ENGINEERING  
AUBURN, ALABAMA 36830  
WWW.SEVERENGINEERING.COM  
IF PERMEABILITY SPEC IS NOT ACHIEVED THEN SOLUTION ANNEAL PART PRIOR TO COATING.
  5. ALUMINA COATING PER SPECIFICATION NCSX-CSPEC-142-06-00.
  6. SURFACE FINISH AFTER COATING 150-500. SURFACE FINISH ON NON-COATED PART 125 OR LESS UNLESS OTHERWISE SPECIFIED BY COATING SUPPLIER.



ISOMETRIC VIEW  
SCALE .50

AR	AR	AR	SEE CHART	SINGLE HOLE SHIM	316 SST [4]	ASTM A240	I	
SE100-001	SE100-002	SE140-003	CAGE CODE	PART OR IDENTIFYING NO	NOMENCLATURE OR DESCRIPTION	MATERIAL	SPECIFICATION	FIND NO
			NEXT ASSEMBLY	PARTS LIST				

RELEASED FOR  
FABRICATION / INSTALLATION  
PPPL Drafting

NO REPRESENTATION OR WARRANTY, EXPRESSED OR IMPLIED, IS MADE AS TO THE ACCURACY, COMPLETENESS OR USEFULNESS OF THE INFORMATION OR STATEMENTS CONTAINED IN THESE DRAWINGS, OR THAT THE USE OR DISCLOSURE OF ANY INFORMATION, APPARATUS, METHOD OR PROCESS DISCLOSED IN THESE DRAWINGS MAY NOT INFRINGE PRIVATE RIGHTS OF OTHERS. NO LIABILITY IS ASSUMED WITH RESPECT TO THE USE OF, OR FOR DAMAGES RESULTING FROM THE USE OF, ANY INFORMATION, APPARATUS, METHOD OR PROCESS DISCLOSED IN THESE DRAWINGS. DRAWINGS MADE AVAILABLE FOR INFORMATION TO BIDDER ARE NOT TO BE USED FOR OTHER PURPOSES, AND ARE TO BE RETURNED UPON REQUEST OF THE FORWARDING CONTRACTOR.

P THIS DRAWING PRODUCED ON PRO-ENGINEER

SCALE NOTED

TOLERANCES UNLESS OTHERWISE SPECIFIED

FRACTIONS ± .01

XX DECIMALS ± .01

XXX DECIMALS ± .005

ANGLES ± 0'15"

BREAK SHARP EDGES OR MAX

FINISH .125 UNLESS OTHERWISE SPECIFIED

DES D WILLIAMSON 02/08  
DRW G MCGINNIS 02/08  
CHK M COLE

SECT :  
DEPT :  
CR :  
PJ :  
REQ :  
REV :

PPPL DRFT J SIEGEL 02/08

VERSION NO. 3

PLANT ORNL

BLDG 5700

FL 3

Oak Ridge National Laboratory managed for the DEPARTMENT OF ENERGY under U.S. GOVERNMENT contract DE-AC05-00OR22725 UT-BATTELLE, LLC, Oak Ridge, Tennessee

NATIONAL COMPACT STELLARATOR EXPERIMENT

SINGLE HOLE SHIM PLATE

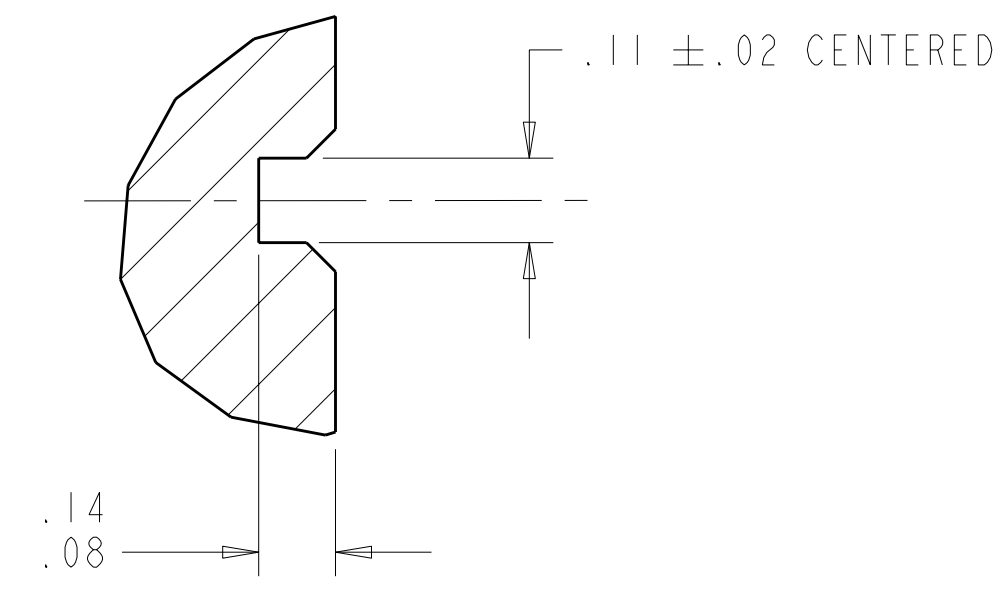
RELEASE LEVEL Fabrication

SE140-048

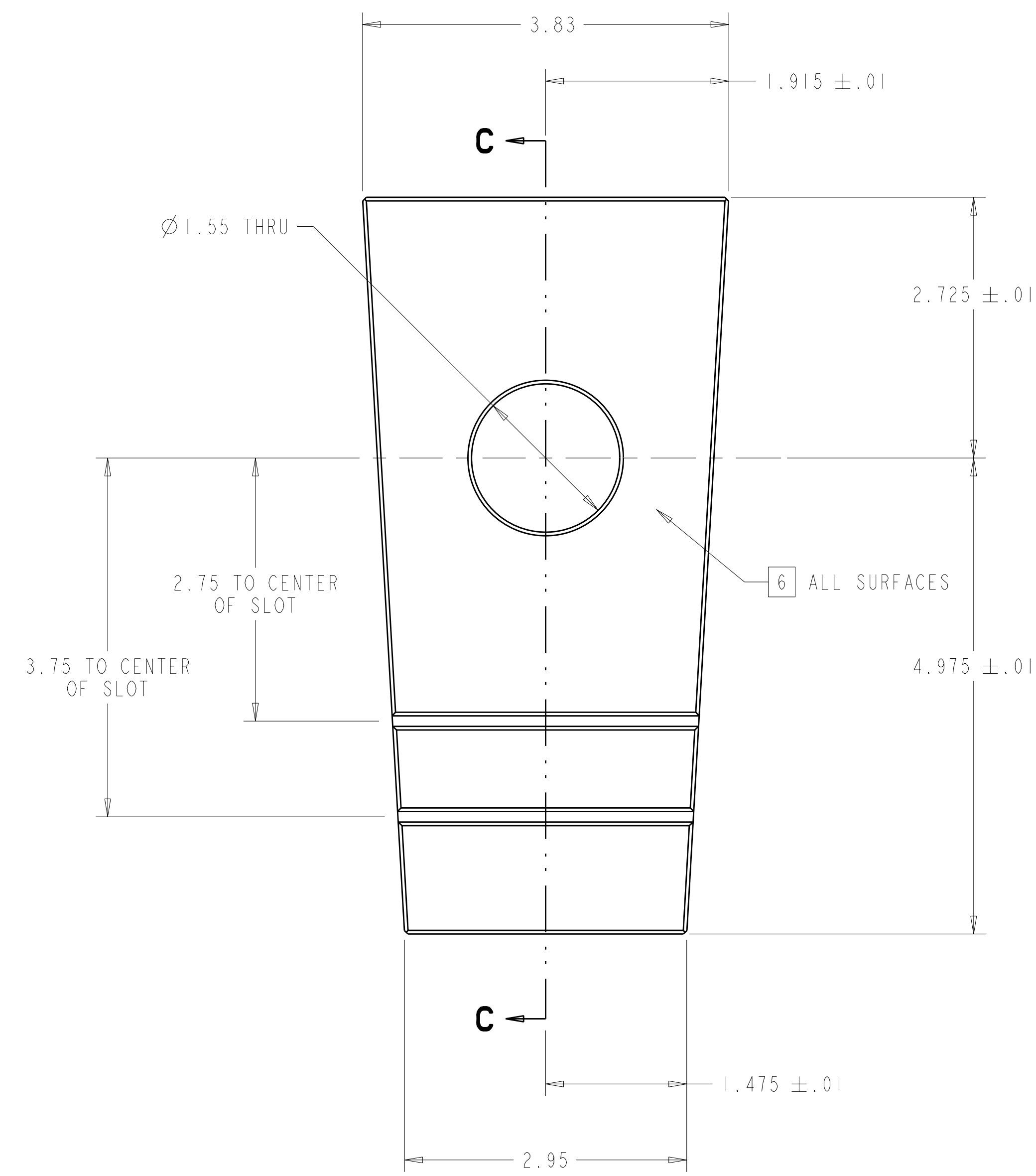
REV 0

REV	DESCRIPTION	BY	DATE	CHK	DEPT	DATE	PE	REQ	DATE	ORNL	DOE	DATE
0	ORIGINAL ISSUE	GM	02/08	MC		02/08						

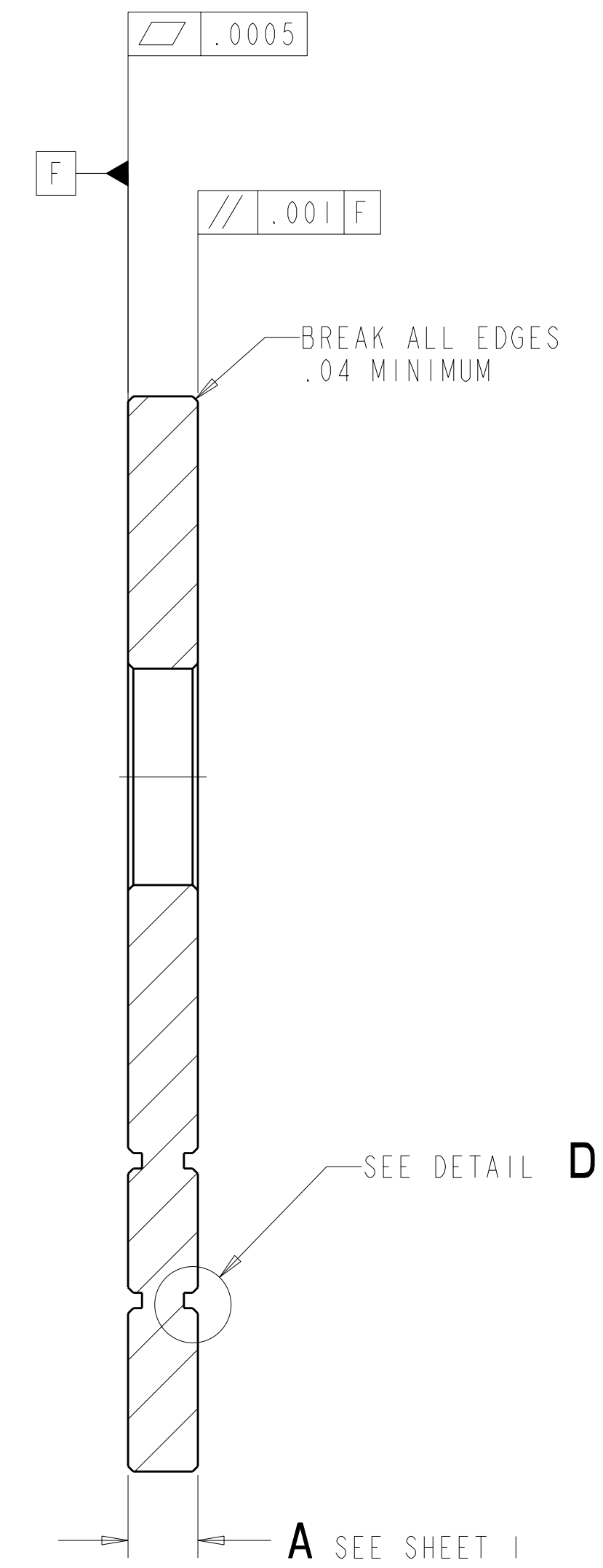
REVISION OR ISSUE PURPOSE REVISION APPROVAL



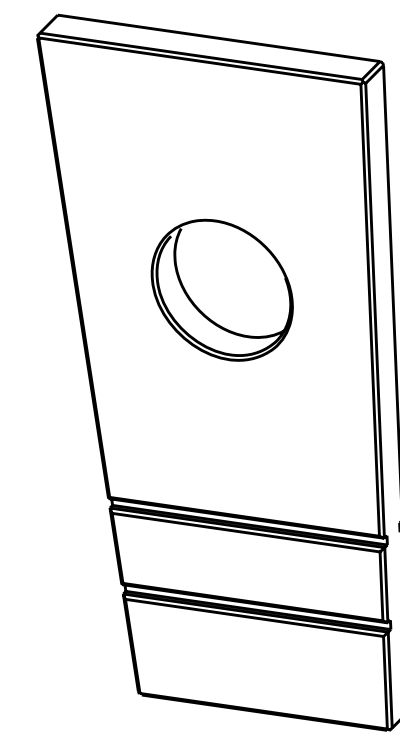
DETAIL D  
SCALE 4.00



SCALE 1.00



SECTION C-C



ISOMETRIC VIEW  
SCALE 0.50

NOTE: DIMENSIONS SHOWN ON THIS SHEET ARE FOR NON-COATED PART  
SEE SHEET 1 FOR ADDITIONAL NOTES AND SPECIFICATIONS

RELEASED FOR  
FABRICATION / INSTALLATION

Oak Ridge National Laboratory managed for the DEPARTMENT OF ENERGY under U.S. GOVERNMENT contract DE-AC05-00OR22725 UT-BATTELLE, LLC, Oak Ridge, Tennessee PROJECT NAME:							
<b>UT-BATTELLE</b> <b>NATIONAL COMPACT STELLARATOR EXPERIMENT</b>							
<b>SINGLE HOLE SHIM PLATE</b>							
VERSION NO.	PLANT	BLDG	FL	SHT	OF	TYPE	CLASS
3	ORNL	5700	3	2	2	S	U
RELEASE LEVEL		SE140-048				REV	
Fabrication						0	