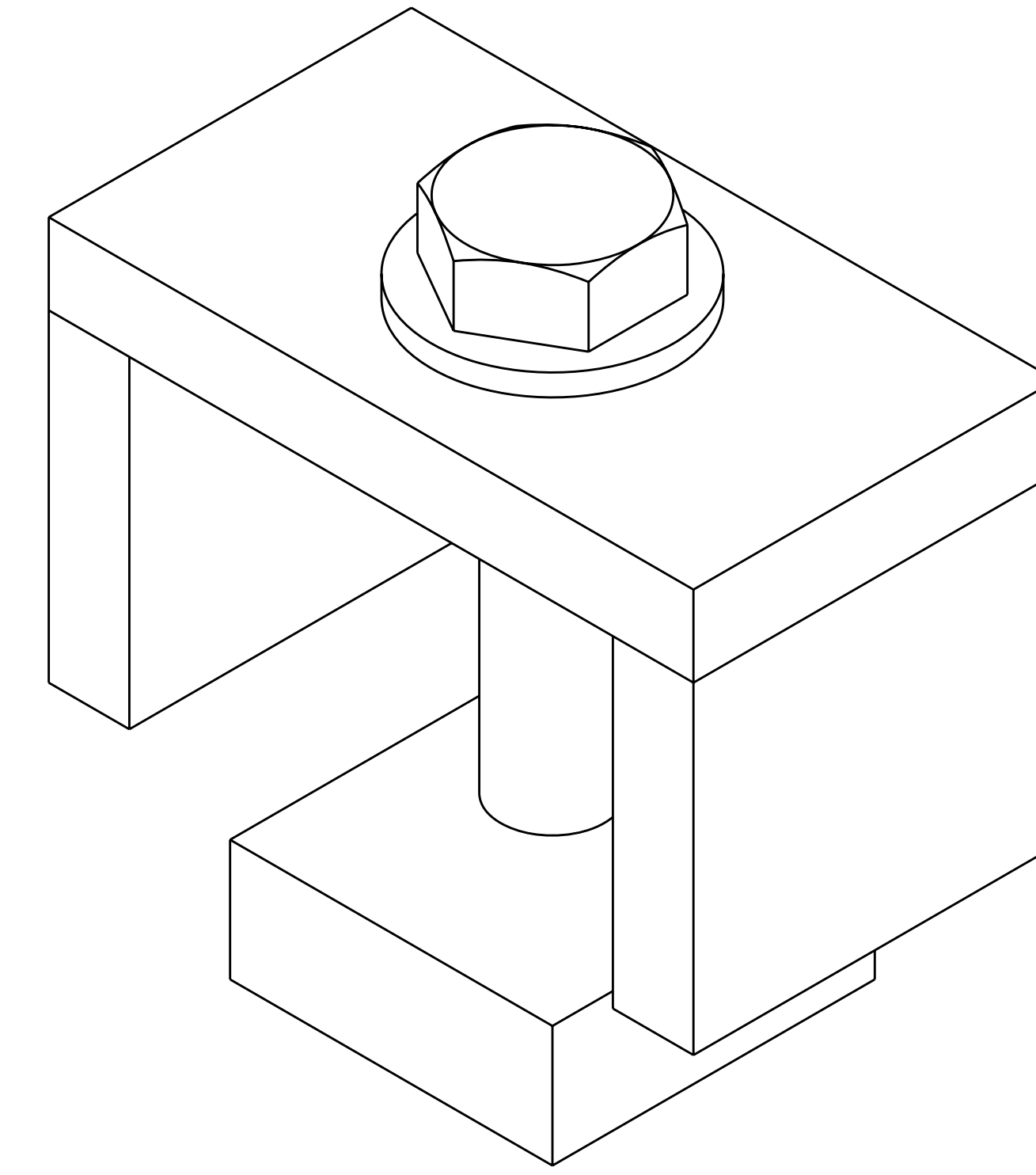
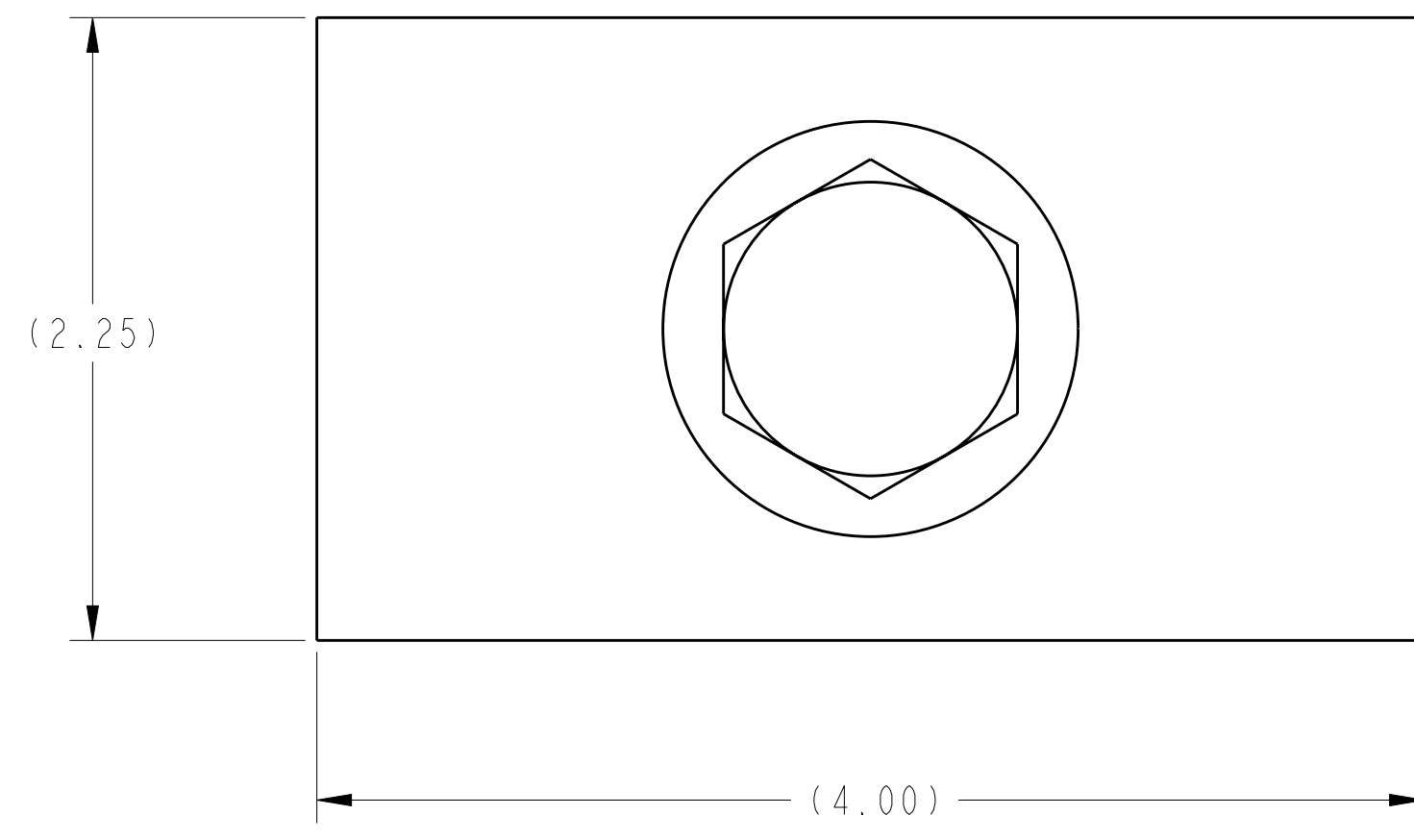
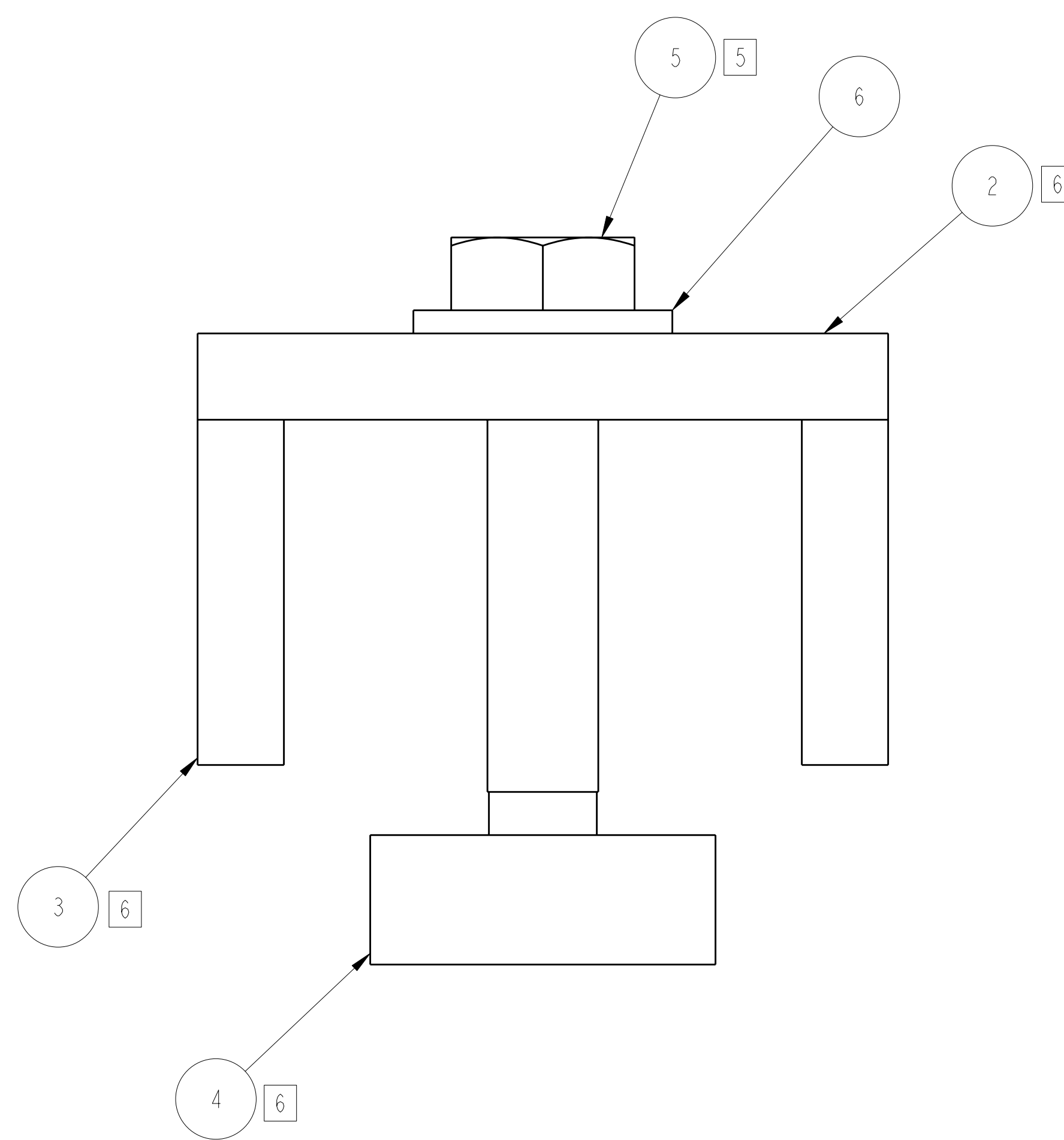


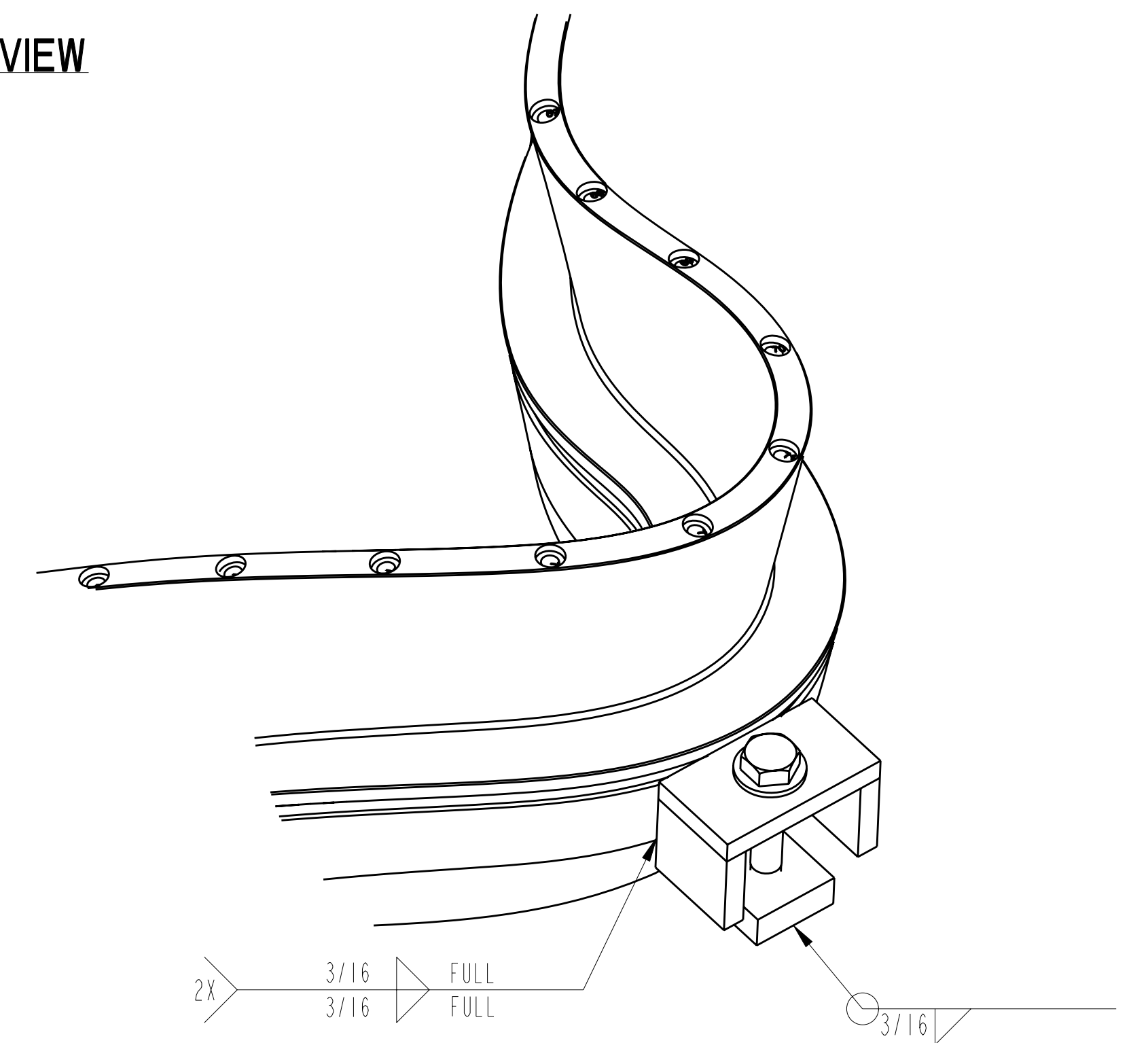
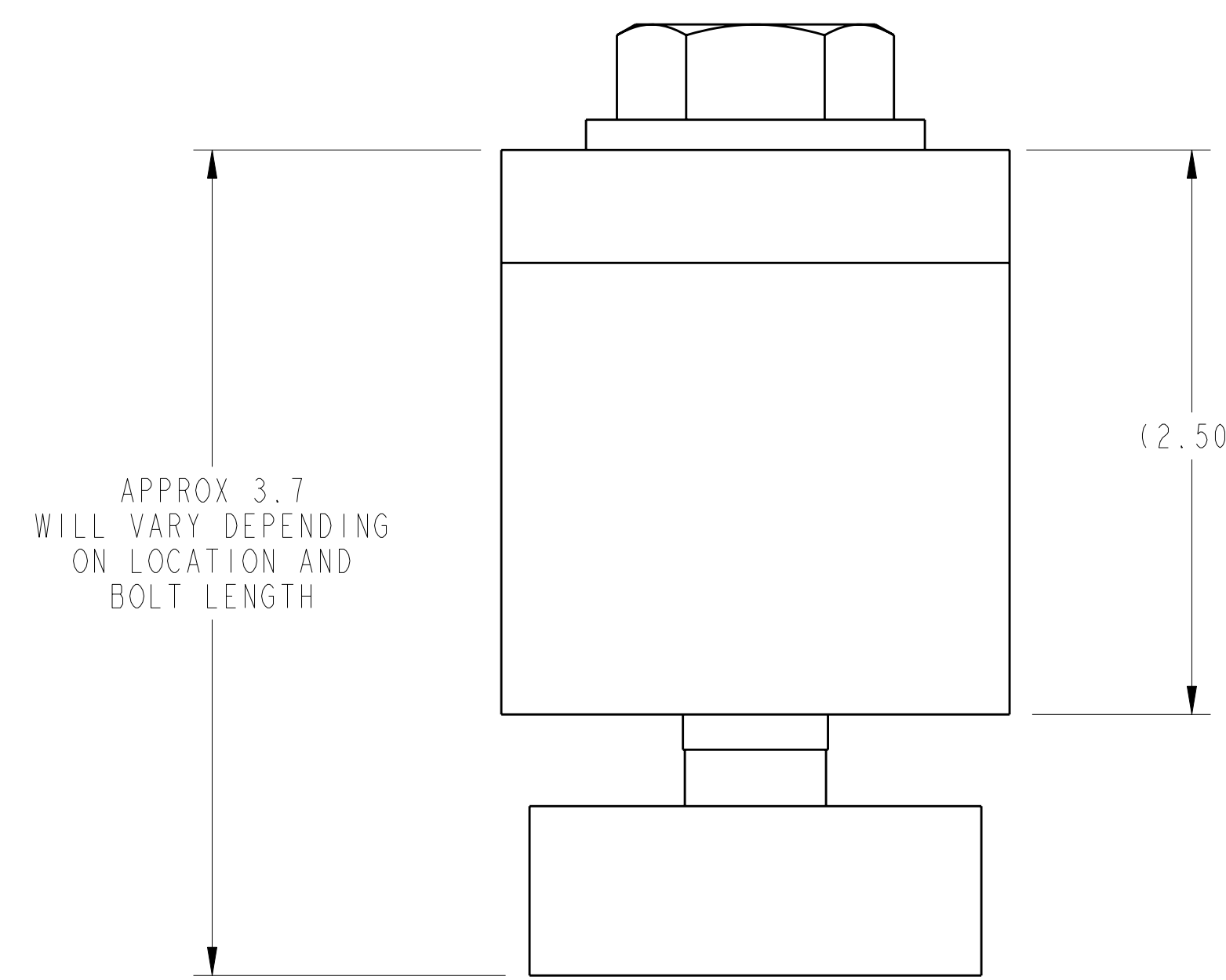
- NOTES
- DRAWING PREPARED IN ACCORDANCE WITH ASME Y14.100-2004.
 - INTERPRET DIMENSIONS AND TOLERANCES PER ASME Y14.5M-1994.
 - DIMENSIONS ARE IN INCHES
 - MAGNETIC PERMEABILITY NOT TO EXCEED 1.02 AS TESTED BY A SEVERN INDICATOR. AVAILABLE FROM:
SEVERN ENGINEERING
AUBURN, ALABAMA 36830
WWW.SEVERENGINEERING.COM
 - BOLT LENGTH TO BE DETERMINED AT INSTALLATION
 - F/N 2, 3, AND 4 TO BE ADJUSTED TO FIT WING AND COIL SURFACES PRIOR TO WELDING.



ISOMETRIC VIEW



-1 CHAIR WELD WING SUPPORT
SCALE 1.50



ISOMETRIC VIEW
IN ASSEMBLY

WELDING ENGINEER
APPROVED L. DUDEK DATE: 01/08

CAGE CODE	PART OR IDENTIFYING NO	NOMENCLATURE OR DESCRIPTION	MATERIAL	SPECIFICATION	FIND NO
	-6	5/8 FLAT WASHER	316 SST	ASTM B18.22.1	6
	-5	5/8-11 UNC [5] HEX BOLT	316 SST	ASTM B18.2.1	5
	SE140-061-3	CHAIR WELD WING SUPPORT NUT PLATE			4
	SE140-061-2	CHAIR WELD WING SUPPORT SIDE PLATE			3
	SE140-061-1	CHAIR WELD WING SUPPORT TOP PLATE			2
	-1	CHAIR WELD WING SUPPORT			1

← NEXT ASSEMBLY

RELEASED FOR FABRICATION / INSTALLATION
PPPL Drafting

NO REPRESENTATION OR WARRANTY, EXPRESSED OR IMPLIED, IS MADE AS TO THE ACCURACY, COMPLETENESS OR USEFULNESS OF THE INFORMATION OR STATEMENTS CONTAINED IN THESE DRAWINGS, OR THAT THE USE OR DISCLOSURE OF ANY INFORMATION, APPARATUS, METHOD OR PROCESS DISCLOSED IN THESE DRAWINGS MAY NOT INFRINGE PRIVATE RIGHTS OF OTHERS. NO LIABILITY IS ASSUMED WITH RESPECT TO THE USE OF, OR FOR DAMAGES RESULTING FROM THE USE OF, ANY INFORMATION, APPARATUS, METHOD OR PROCESS DISCLOSED IN THESE DRAWINGS. DRAWINGS MADE AVAILABLE FOR INFORMATION TO BIDDER ARE NOT TO BE USED FOR OTHER PURPOSES, AND ARE TO BE RETURNED UPON REQUEST OF THE FORWARDING CONTRACTOR.

P THIS DRAWING PRODUCED ON PRO-ENGINEER

REV	DESCRIPTION	BY	DATE	CHK	DEPT	DATE	PE	REQ	DATE	ORNL	DOE	DATE
0	ORIGINAL ISSUE	SD	01/08									

SCALE NOTED	DES. D. WILLIAMSON	01/2008
TOLERANCES UNLESS OTHERWISE SPECIFIED	DRW. S. DIXON	01/2008
FRACTIONS	CHK. M. COLE	01/2008
XX DECIMALS ±.01		
XXX DECIMALS ±.005		
ANGLES ±0°15'		
BREAK SHARP EDGES OR MAX		
FINISH .125 UNLESS OTHERWISE SPECIFIED		

UT-BATTELLE Oak Ridge National Laboratory managed for the DEPARTMENT OF ENERGY under U.S. GOVERNMENT CONTRACT DE-AC05-00OR22725 UT-BATTELLE, LLC, Oak Ridge, Tennessee PROJECT NAME:	
NATIONAL COMPACT STELLARATOR EXPERIMENT	
CHAIR WELD WING SUPPORT	
VERSION NO. 2 PLANT ORNL BLDG 5700 FL 3 SHT 1 OF 1 TYPE S CLASS U REV 0	SE140-060