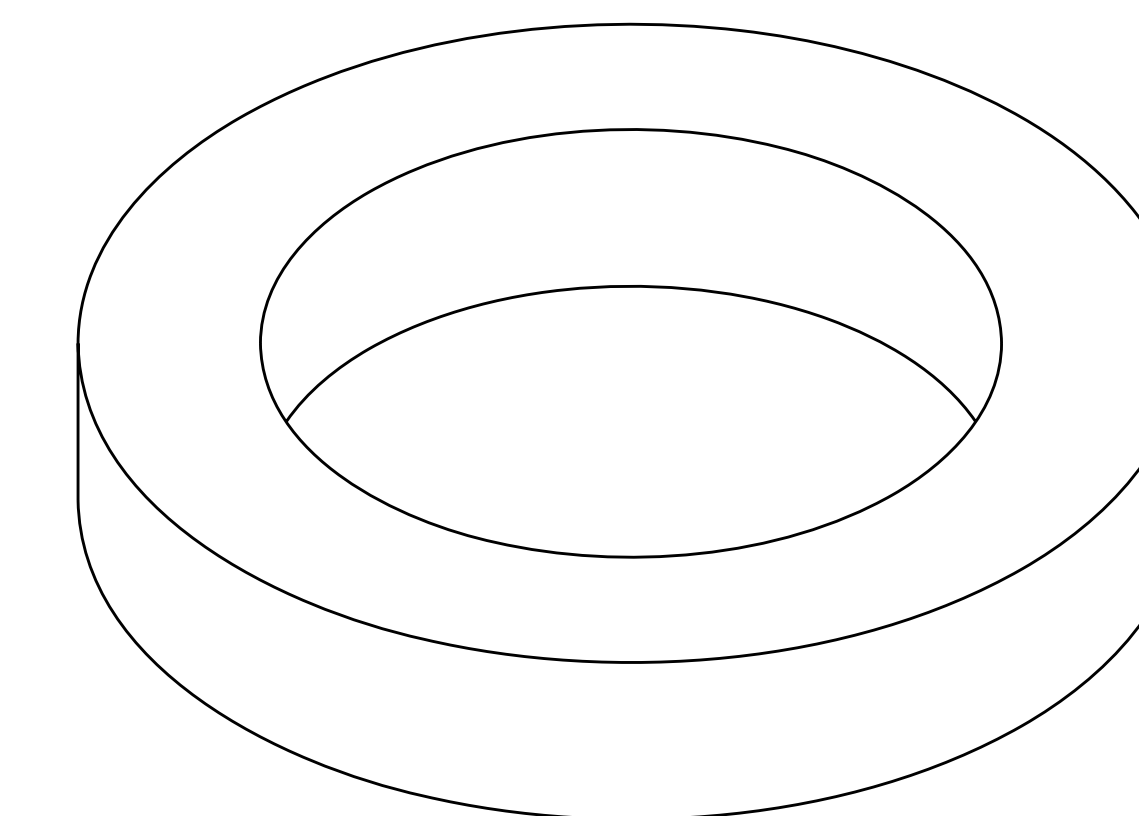
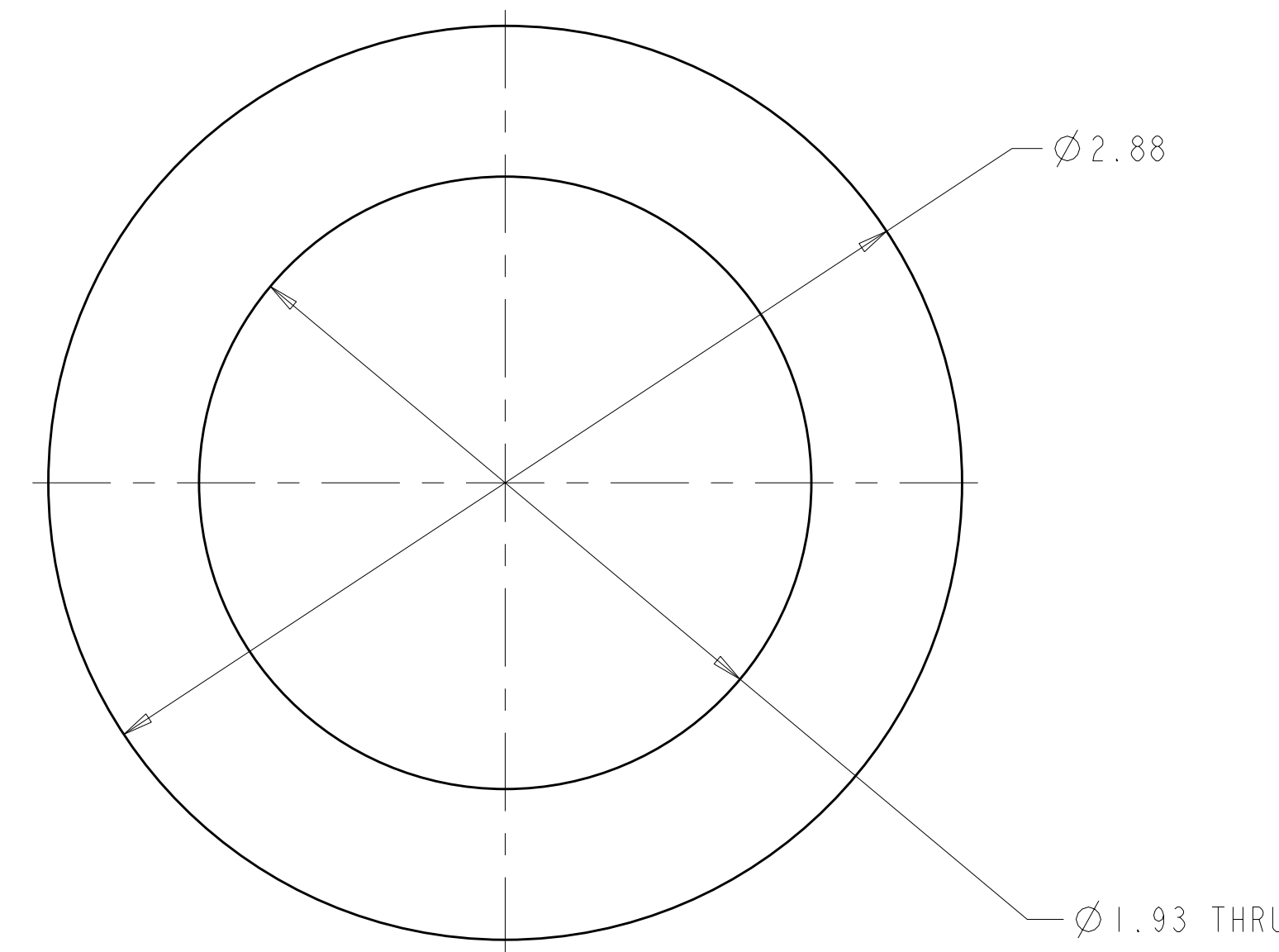
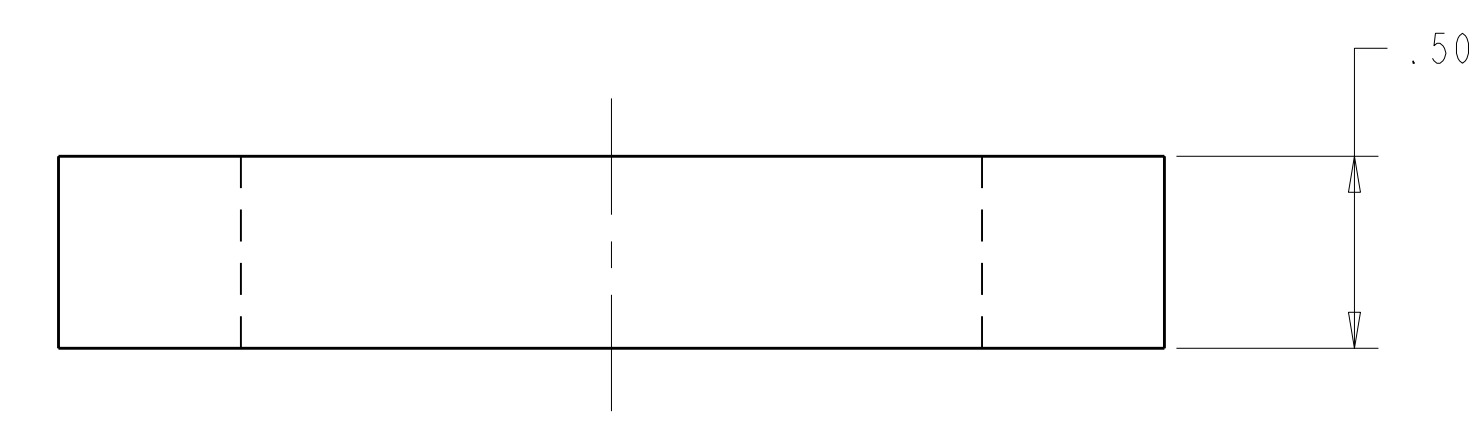


- NOTES
1. DRAWING PREPARED IN ACCORDANCE WITH ASME Y14.100-2004.
 2. INTERPRET DIMENSIONS AND TOLERANCES PER ASME Y14.5M-1994.
 3. DIMENSIONS ARE IN INCHES
 4. MAGNETIC PERMEABILITY NOT TO EXCEED 1.02 AS TESTED BY A SEVERN INDICATOR. AVAILABLE FROM:
SEVERN ENGINEERING
AUBURN, ALABAMA 36830
WWW.SEVERNGINEERING.COM



ISOMETRIC VIEW
SCALE 2.00



-1 WASHER
SCALE 2.000

RFD-14-029: Approved change in washer material from ASTM B670 to ASTM B637 for SE140-208 (r0-a) and from ASTM B265 Grade 5 to ASTM B348-5 Grade 5 on SE140-193 (r2-a). (See RFD-14-029 for details)

REV	DESCRIPTION	BY	DATE	CHK	DEPT	DATE	PE	REQ	DATE	ORNL	DOE	DATE
2	REVISED MATERIAL PER ECN# 5244	GM	07/07	MC		07/07	DW		07/07			
1	REVISED MATL PER ECN-5232	DW	3/7/07	MC								
0	ORIGINAL ISSUE	GM	02/07									

SE	AR	AR	AR	AR	CAGE CODE	PART OR IDENTIFYING NO	NOMENCLATURE OR DESCRIPTION	MATERIAL	SPECIFICATION	FIND NO
SE100-001	AR	AR	AR	AR		-1	WASHER	UNS N07718 OR UNS R56400	ASTM B670 OR ASTM B265 GRADE 5	1

RELEASED FOR FABRICATION / INSTALLATION
PPPL Drafting

NO REPRESENTATION OR WARRANTY, EXPRESSED OR IMPLIED, IS MADE AS TO THE ACCURACY, COMPLETENESS OR USEFULNESS OF THE INFORMATION OR STATEMENTS CONTAINED IN THESE DRAWINGS, OR THAT THE USE OR DISCLOSURE OF ANY INFORMATION, APPARATUS, METHOD OR PROCESS DISCLOSED IN THESE DRAWINGS MAY NOT INFRINGE PRIVATE RIGHTS OF OTHERS. NO LIABILITY IS ASSUMED WITH RESPECT TO THE USE OF, OR FOR DAMAGES RESULTING FROM THE USE OF, ANY INFORMATION, APPARATUS, METHOD OR PROCESS DISCLOSED IN THESE DRAWINGS. DRAWINGS MADE AVAILABLE FOR INFORMATION TO BIDDER ARE NOT TO BE USED FOR OTHER PURPOSES, AND ARE TO BE RETURNED UPON REQUEST OF THE FORWARDING CONTRACTOR.

P THIS DRAWING PRODUCED ON PRO-ENGINEER

REV	DESCRIPTION	BY	DATE	CHK	DEPT	DATE	PE	REQ	DATE	ORNL	DOE	DATE
2	REVISED MATERIAL PER ECN# 5244	GM	07/07	MC		07/07	DW		07/07			
1	REVISED MATL PER ECN-5232	DW	3/7/07	MC								
0	ORIGINAL ISSUE	GM	02/07									

SCALE NOTED	DES D WILLIAMSON 02/07
TOLERANCES UNLESS OTHERWISE SPECIFIED	DRW G MCGINNIS 02/07
FRACTIONS	CHK M COLE 02/07
XX DECIMALS ±.01	SECT :
XXX DECIMALS ±.005	DEPT :
ANGLES ±0°15'	PE :
BREAK SHARP EDGES OR MAX FINISH .125 UNLESS OTHERWISE SPECIFIED	CR :
	PJ :
	RD :
	RE :
	PPPL DRFT J SIEGEL 02/07
	VERSION NO. 2
	PLANT ORNL
	BLDG 5700
	FL 3
	SHT 1
	OF 1
	TYPE S
	CLASS U
	REV 2

Oak Ridge National Laboratory managed for the DEPARTMENT OF ENERGY under U.S. GOVERNMENT contract DE-AC05-00OR22725 UT-BATTELLE, LLC. Oak Ridge, Tennessee PROJECT NAME: NATIONAL COMPACT STELLARATOR EXPERIMENT	
WASHER	
VERSION NO. 2 PLANT ORNL BLDG 5700 FL 3 SHT 1 OF 1 TYPE S CLASS U REV 2	SE140-193