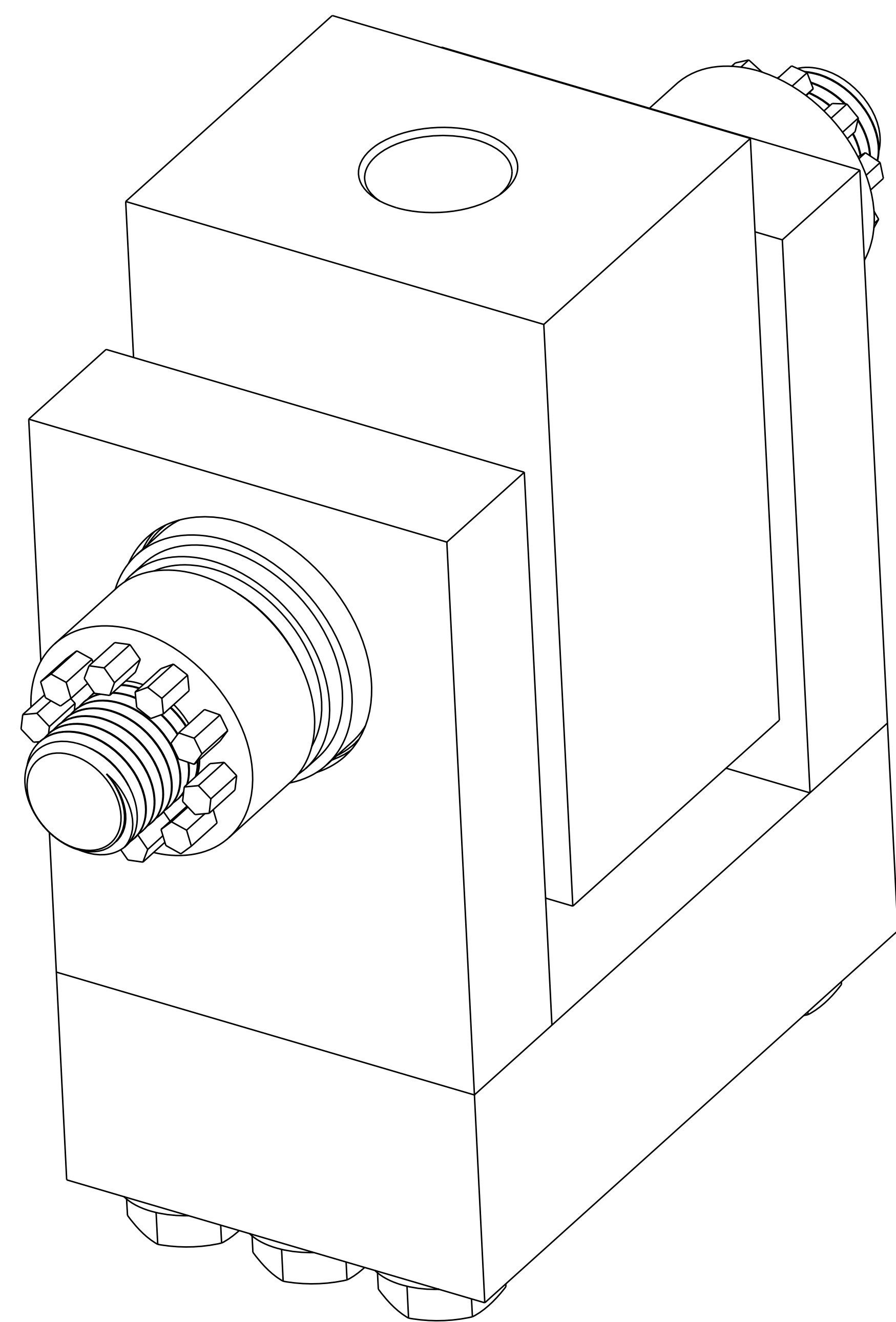
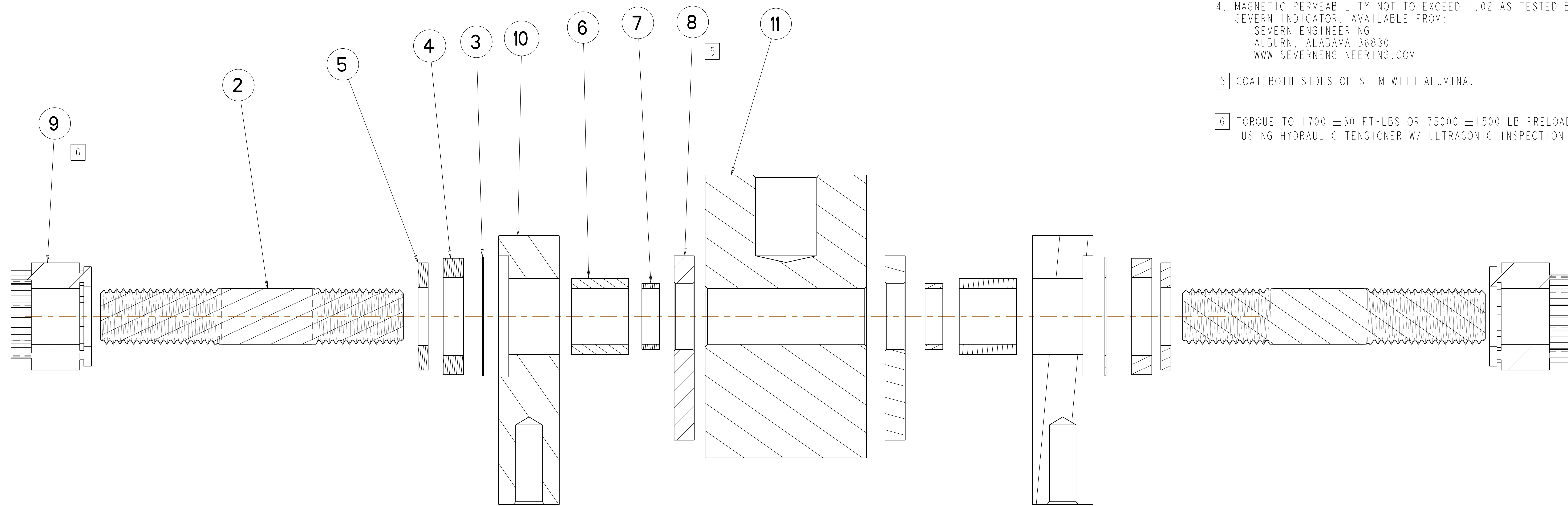
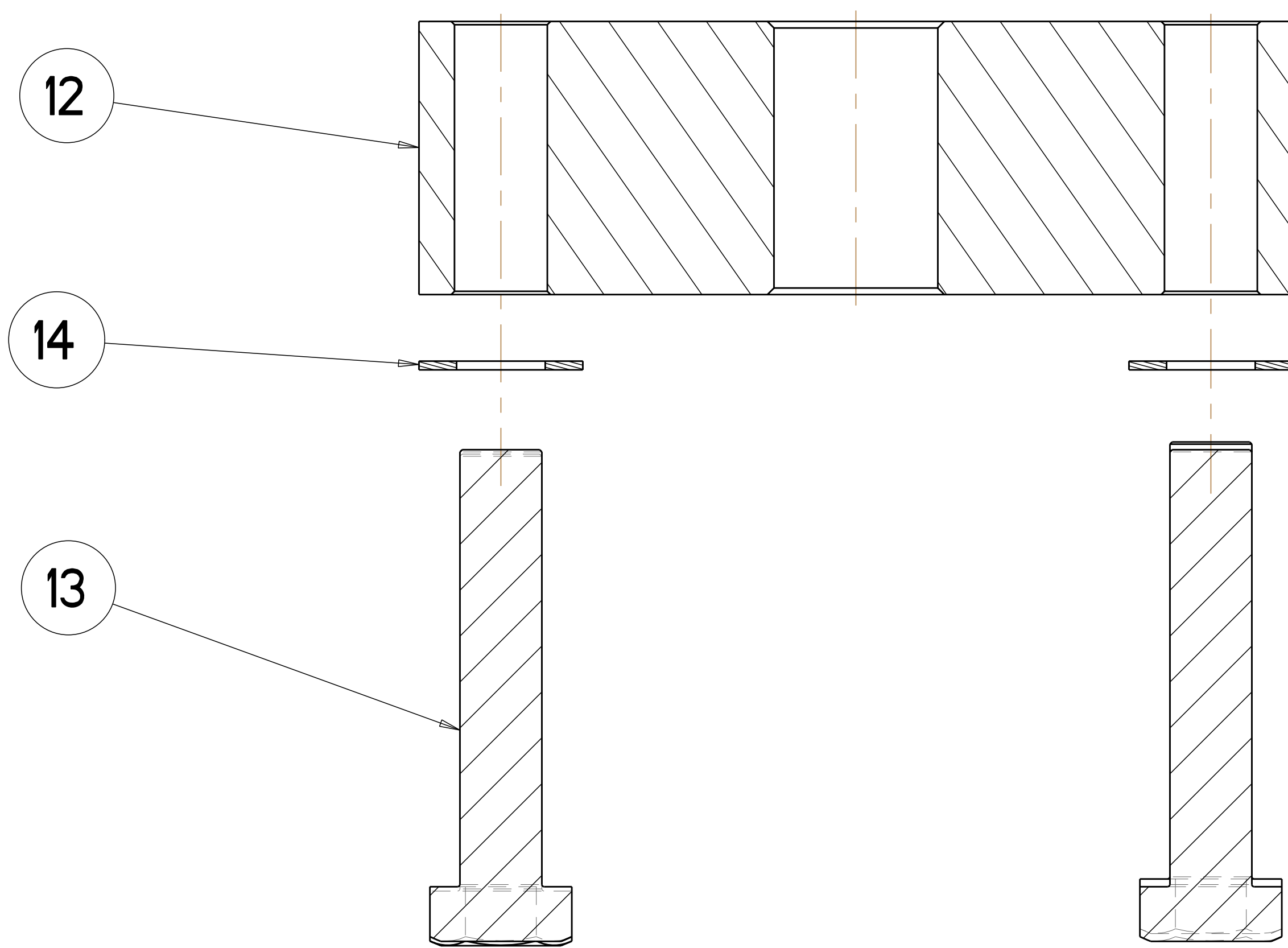


- NOTES
- DRAWING PREPARED IN ACCORDANCE WITH ASME Y14.100-2004.
  - INTERPRET DIMENSIONS AND TOLERANCES PER ASME Y14.5M-1994.
  - DIMENSIONS ARE IN INCHES
  - MAGNETIC PERMEABILITY NOT TO EXCEED 1.02 AS TESTED BY A SEVERN INDICATOR. AVAILABLE FROM:  
 SEVERN ENGINEERING  
 AUBURN, ALABAMA 36830  
 WWW.SEVERNENGINEERING.COM
  - COAT BOTH SIDES OF SHIM WITH ALUMINA.
  - TORQUE TO 1700 ±30 FT-LBS OR 75000 ±1500 LB PRELOAD USING HYDRAULIC TENSIONER W/ ULTRASONIC INSPECTION



ISOMETRIC VIEW  
 SCALE 1.00



1  
 EXPLODED SECTION VIEW

**RELEASED FOR  
 FABRICATION / INSTALLATION**  
 PPL Drafting:

CAGE CODE	PART OR IDENTIFYING NO	NOMENCLATURE OR DESCRIPTION	MATERIAL	SPECIFICATION	FIND NO
6	-14	Ø.88 ID X 1.315 OD X.06 THK WASHER	UNS S31600		14
6	-13	HEX HD CAP SCREW Ø3/4 -10 x 4" LNG MCMaster CARR #92186A851	UNS S31600	MCMaster CARR ATLANTA, GA 30374 404-376-7000 WWW.MCMaster.COM	13
1	-12	PULL FIXTURE BOTTOM	UNS S31600		12
1	-11	PULL FIXTURE TOP	UNS S31600		11
2	-10	PULL FIXTURE SIDE PLATES	UNS S31600		10
2	S-02260	1-3/8 -6 UNC SUPERNUPT ASSEMBLY		SUPERBOLT PO BOX 683 CARNEGIE, PA 15106 412-279-1149	9
AR	-8	SINGLE HOLE SHIM	UNS S31600 ALUMINA COATED	ASTM A240	8
1	SE140-195-2	BUSHING			7
2	SE140-195-1	BUSHING			6
2	-5	Ø1.44 ID 2.65 ODX 25THK LOAD WASHER	UNS R56400 T16A14V		5
2	SE140-193	FLAT WASHER			4
2	SE140-192	INSULATING WASHER			3
	SE140-191-2	1-3/8" X 7.50LG STUD			2
	-1	MCWF FLANGE PULL TEST ASSEMBLY			1
NEXT ASSEMBLY PARTS LIST					



REV	DESCRIPTION	BY	DATE	CHK	DEPT	DATE	PE	REQ	DATE	ORNL	DOE	DATE
0	ORIGINAL ISSUE	GLL	03/07									

SCALE NOTED	DES: K FREUDENBERG 02/07	DRW: G LOVETT 02/07	CHK: M COLE 02/07	SECT: : DEPT: : PE: D WILLIAMSON 02/07	CR: : PJ: : RD: : PPPL DRFT J SIEGEL 02/07	FINISH :25 UNLESS OTHERWISE SPECIFIED
-------------	--------------------------	---------------------	-------------------	--	---	---------------------------------------

UT-BATTELLE	Oak Ridge National Laboratory managed for the DEPARTMENT OF ENERGY under U.S. GOVERNMENT contract DE-AC05-00OR22725 UT-BATTELLE, LLC, Oak Ridge, Tennessee					
PROJECT NAME NATIONAL COMPACT STELLARATOR EXPERIMENT						
MCWF FLANGE PULL SHEAR TEST ASSEMBLY						
VERSION NO. 22	PLANT ORNL	BLDG 5700	FL 3	SHT OF 1	TYPE 3	CLASS A
RELEASE LEVEL Fabrication	SE140-199		REV 0			

NO REPRESENTATION OR WARRANTY, EXPRESSED OR IMPLIED, IS MADE AS TO THE ACCURACY, COMPLETENESS OR USEFULNESS OF THE INFORMATION OR STATEMENTS CONTAINED IN THESE DRAWINGS, OR THAT THE USE OR DISCLOSURE OF ANY INFORMATION, APPARATUS, METHOD OR PROCESS DISCLOSED IN THESE DRAWINGS MAY NOT INFRINGE PRIVATE RIGHTS OF OTHERS. NO LIABILITY IS ASSUMED WITH RESPECT TO THE USE OF, OR FOR DAMAGES RESULTING FROM THE USE OF, ANY INFORMATION, APPARATUS, METHOD OR PROCESS DISCLOSED IN THESE DRAWINGS. DRAWINGS MADE AVAILABLE FOR INFORMATION TO BIDDER ARE NOT TO BE USED FOR OTHER PURPOSES, AND ARE TO BE RETURNED UPON REQUEST OF THE FORWARDING CONTRACTOR.

**P** THIS DRAWING PRODUCED ON PRO-ENGINEER

H  
G  
F  
E  
D  
C  
B  
A

8

7

6

5

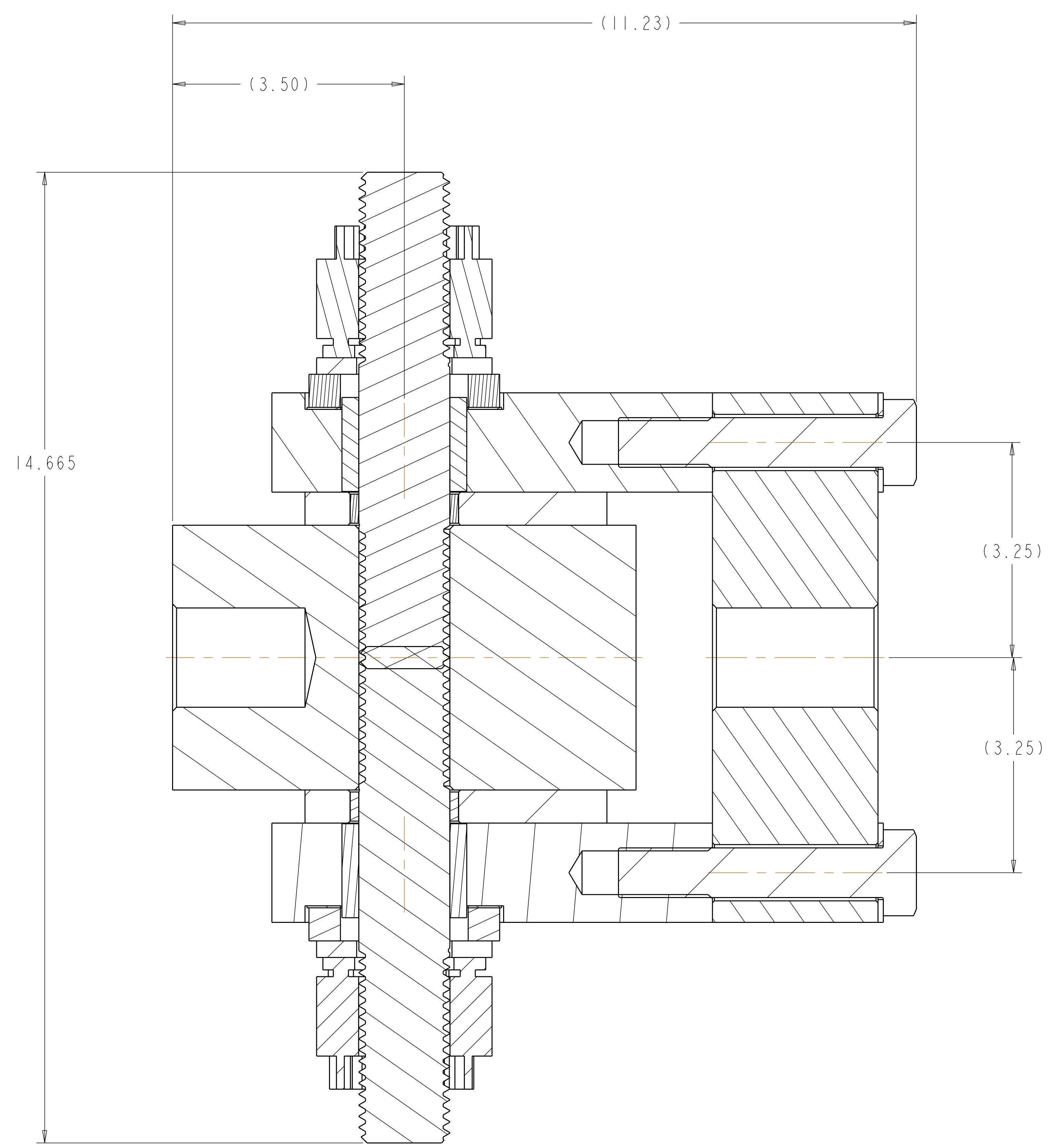
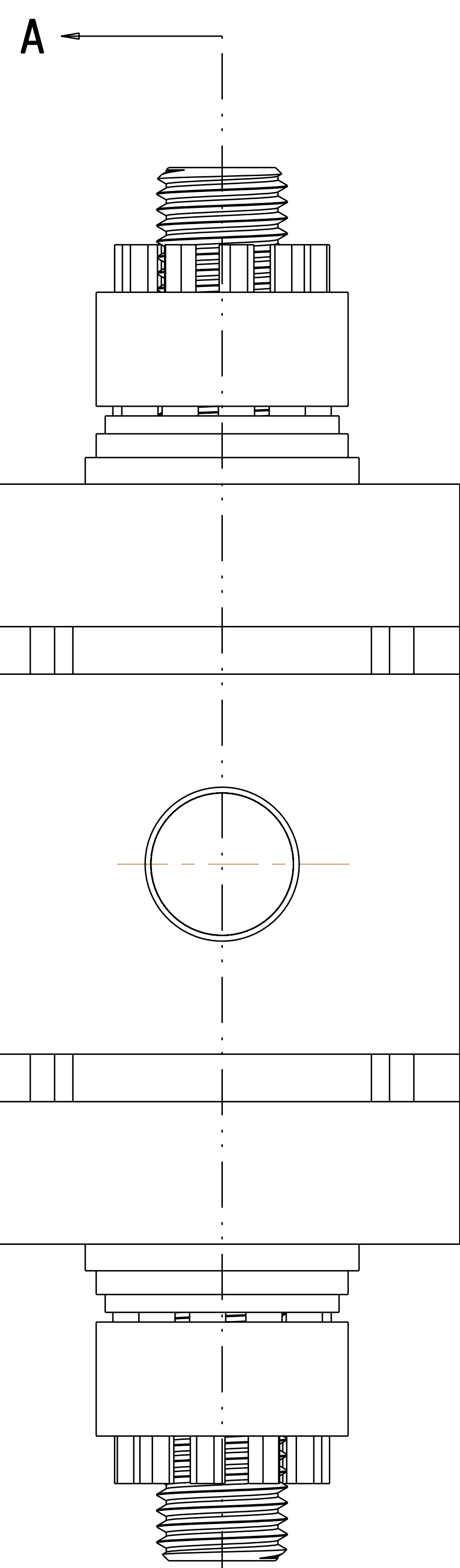
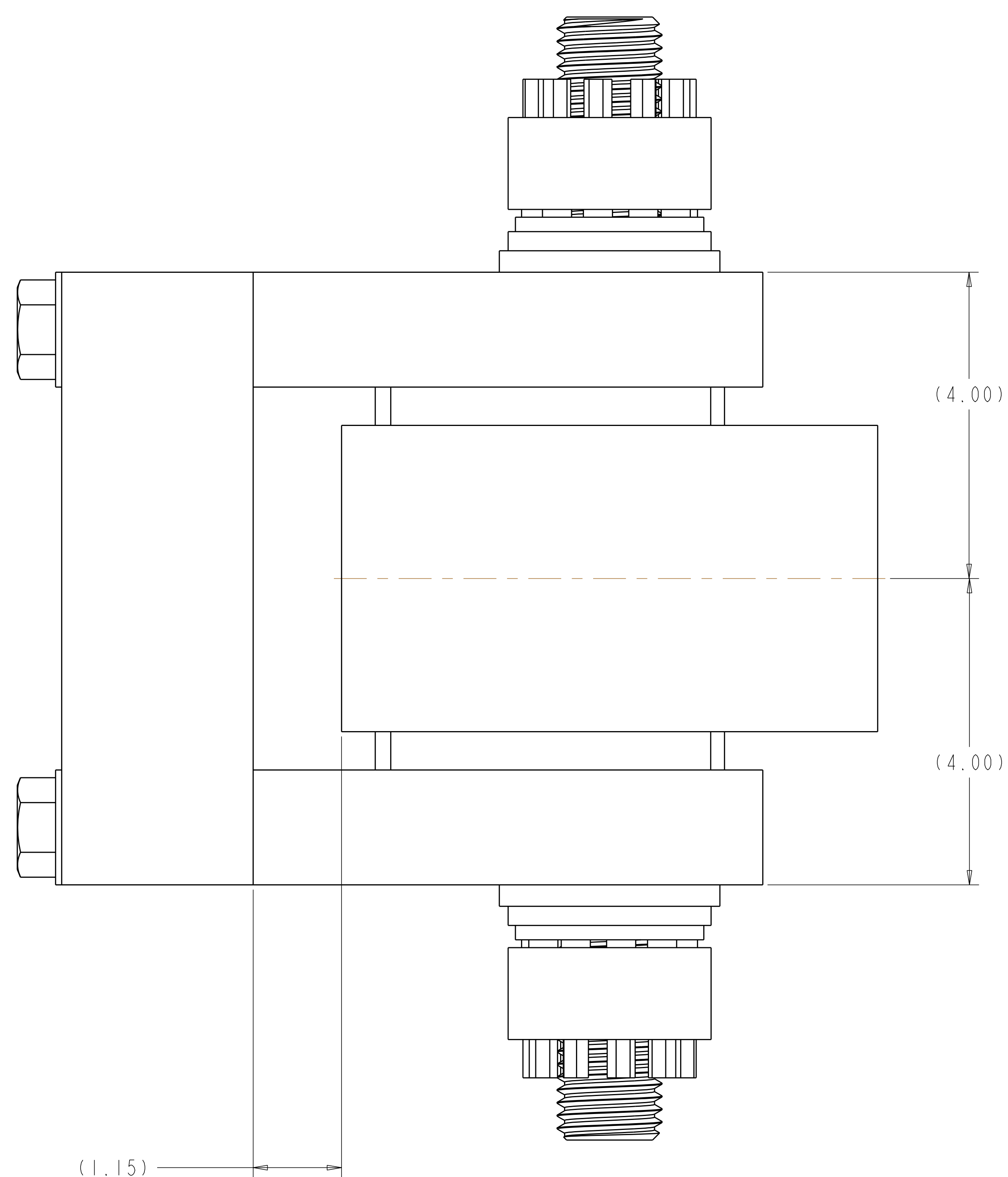
4

3

2

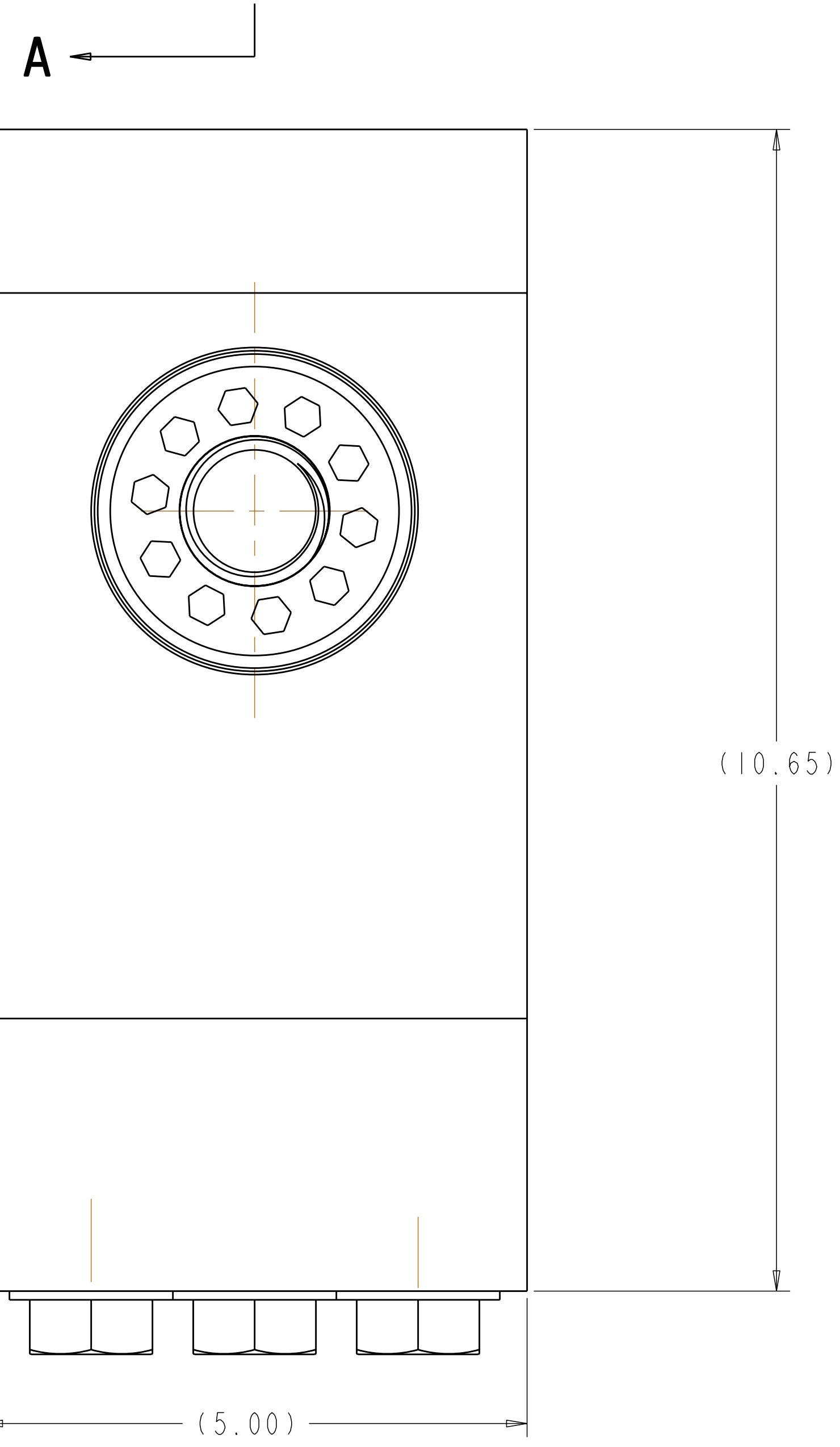
1

NEXT ASS'Y: FINAL ASS'Y:



SECTION A-A

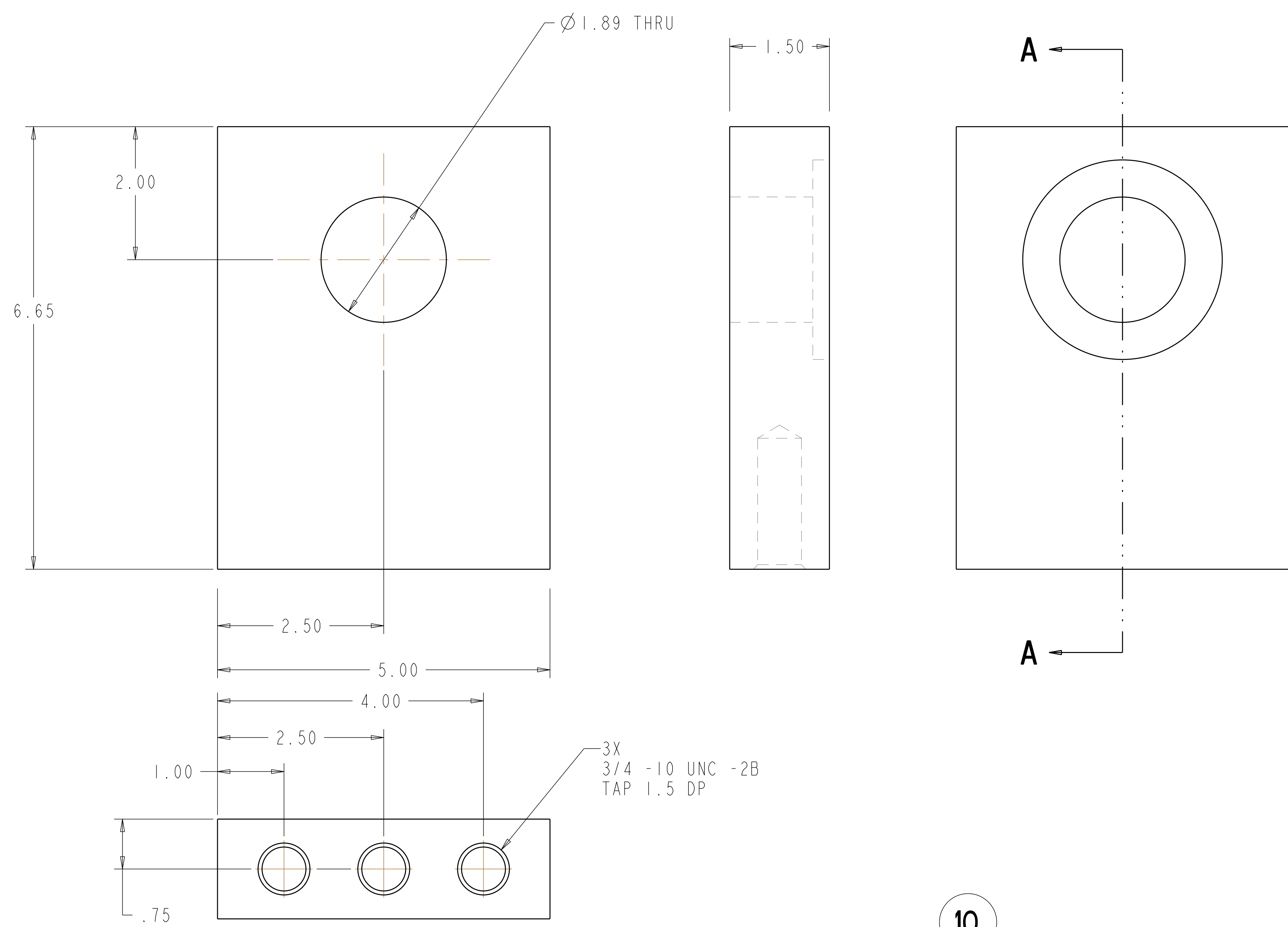
SCALE 1.000



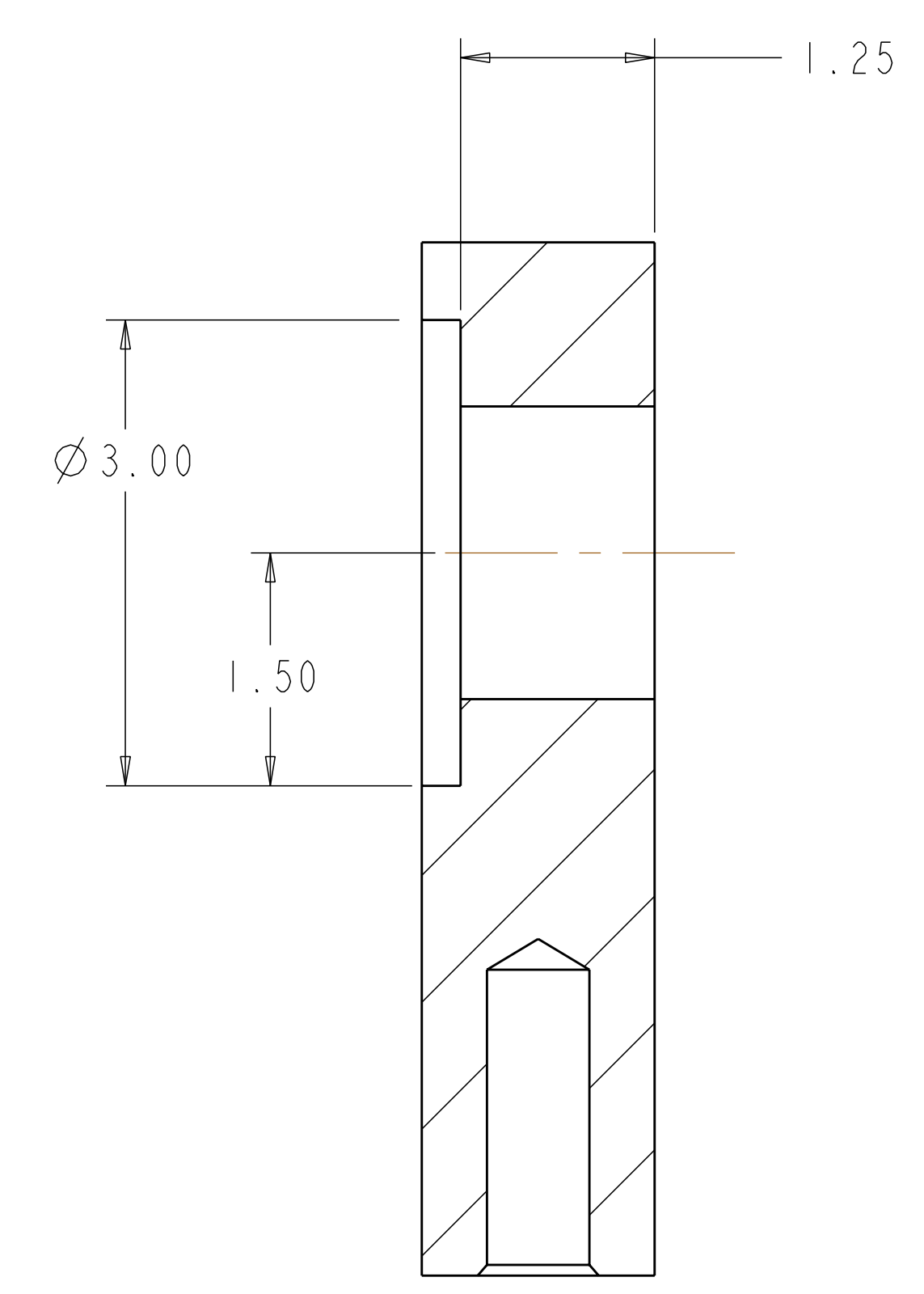
**RELEASED FOR FABRICATION / INSTALLATION**  
 PPPL Drafting:

Oak Ridge National Laboratory managed for the DEPARTMENT OF ENERGY under U.S. GOVERNMENT contract DE-AC05-00OR22725 UT-BATTELLE, LLC, Oak Ridge, Tennessee PROJECT NAME							
<b>UT-BATTELLE</b> NATIONAL COMPACT STELLARATOR EXPERIMENT							
MCWF FLANGE PULL SHEAR TEST ASSEMBLY							
VERSION NO.	PLANT	BLDG	FL	SHT OF	TYPE	CLASS	
22	ORNL	5700	3	2 3	A	U	
RELEASE LEVEL		SEI40-199				REV	
Fabrication						0	

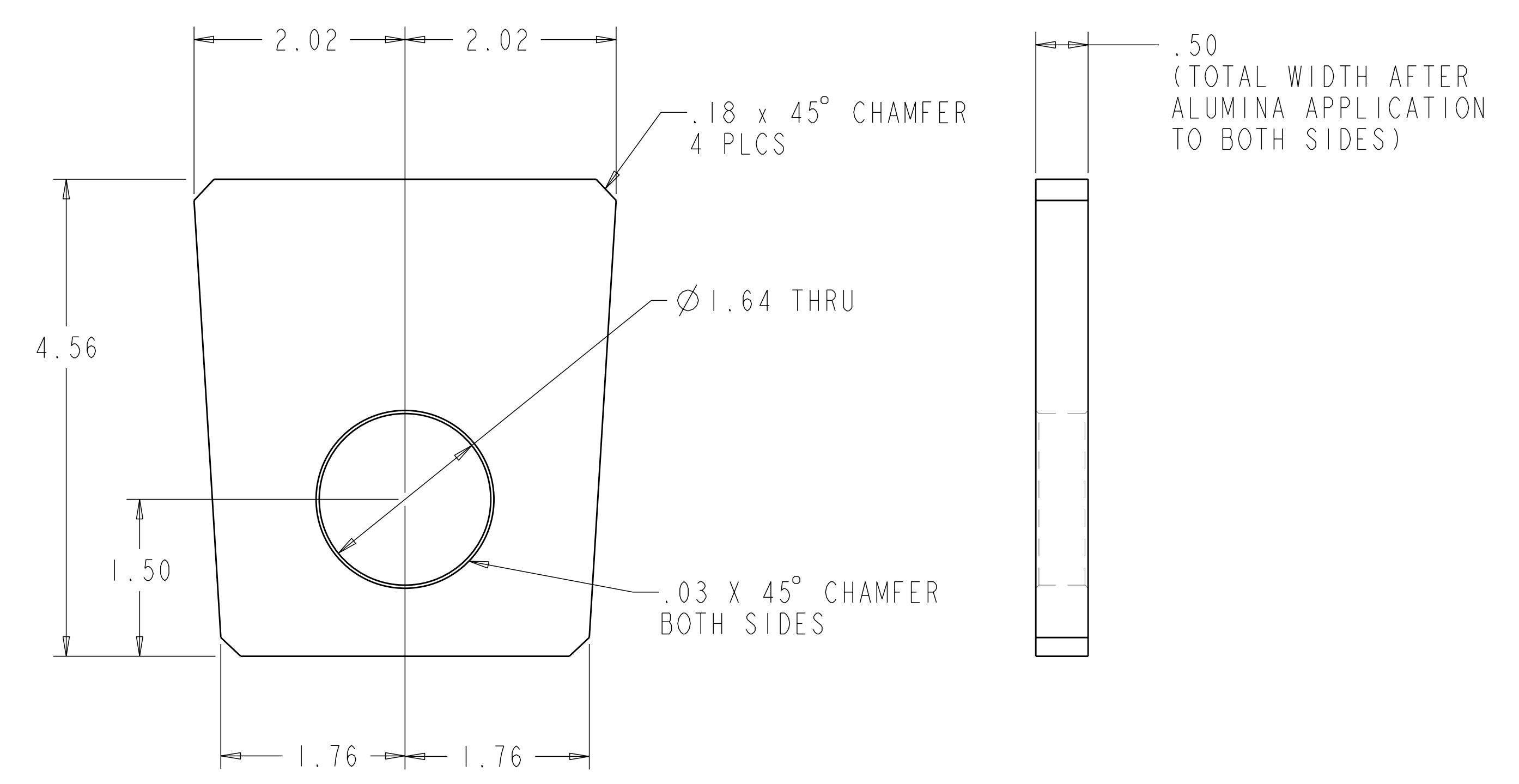
SEI40-199



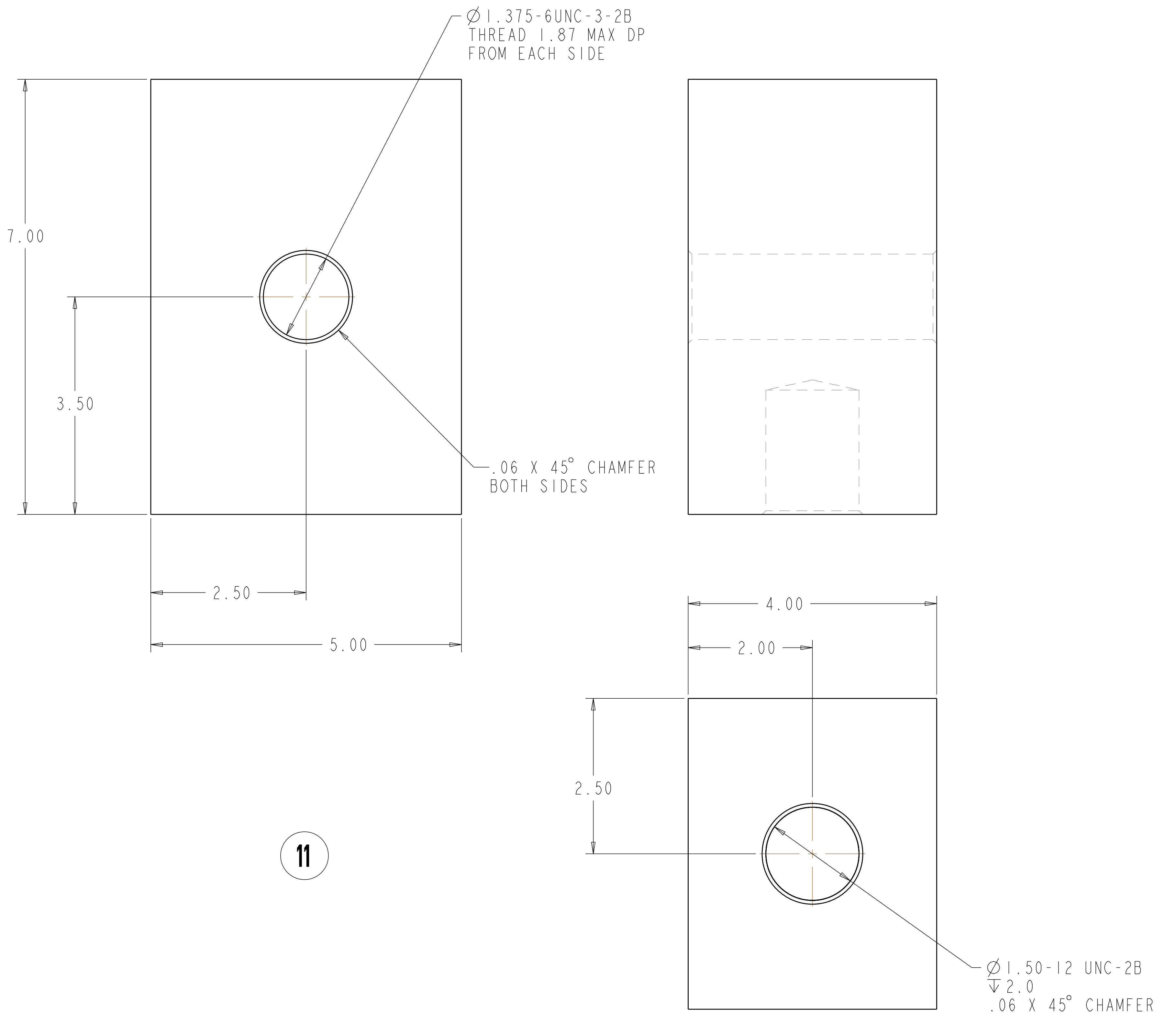
10



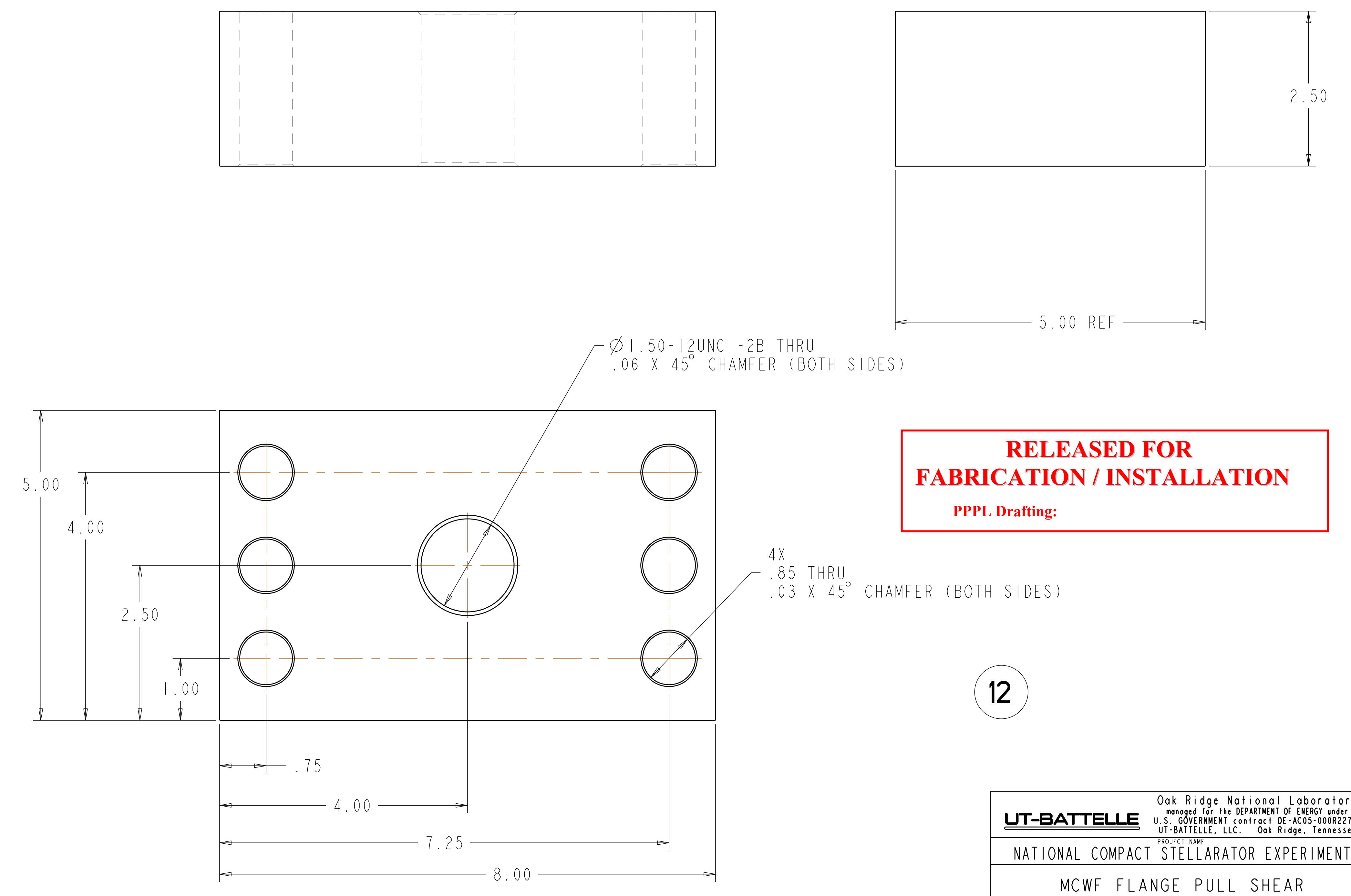
SECTION A-A



8



11



12

**RELEASED FOR  
FABRICATION / INSTALLATION**  
PPPL Drafting:

Oak Ridge National Laboratory managed for the DEPARTMENT OF ENERGY under U.S. GOVERNMENT contract DE-AC05-00OR22725 UT-BATTELLE, LLC, Oak Ridge, Tennessee PROJECT NAME							
<b>NATIONAL COMPACT STELLARATOR EXPERIMENT</b>							
<b>MCWF FLANGE PULL SHEAR TEST ASSEMBLY</b>							
VERSION NO.	PLANT	BLDG	FL	SHT OF	TYPE	CLASS	
22	ORNL	5700	3	3	A	U	
RELEASE LEVEL		SEI40-199				REV	
Fabrication						0	