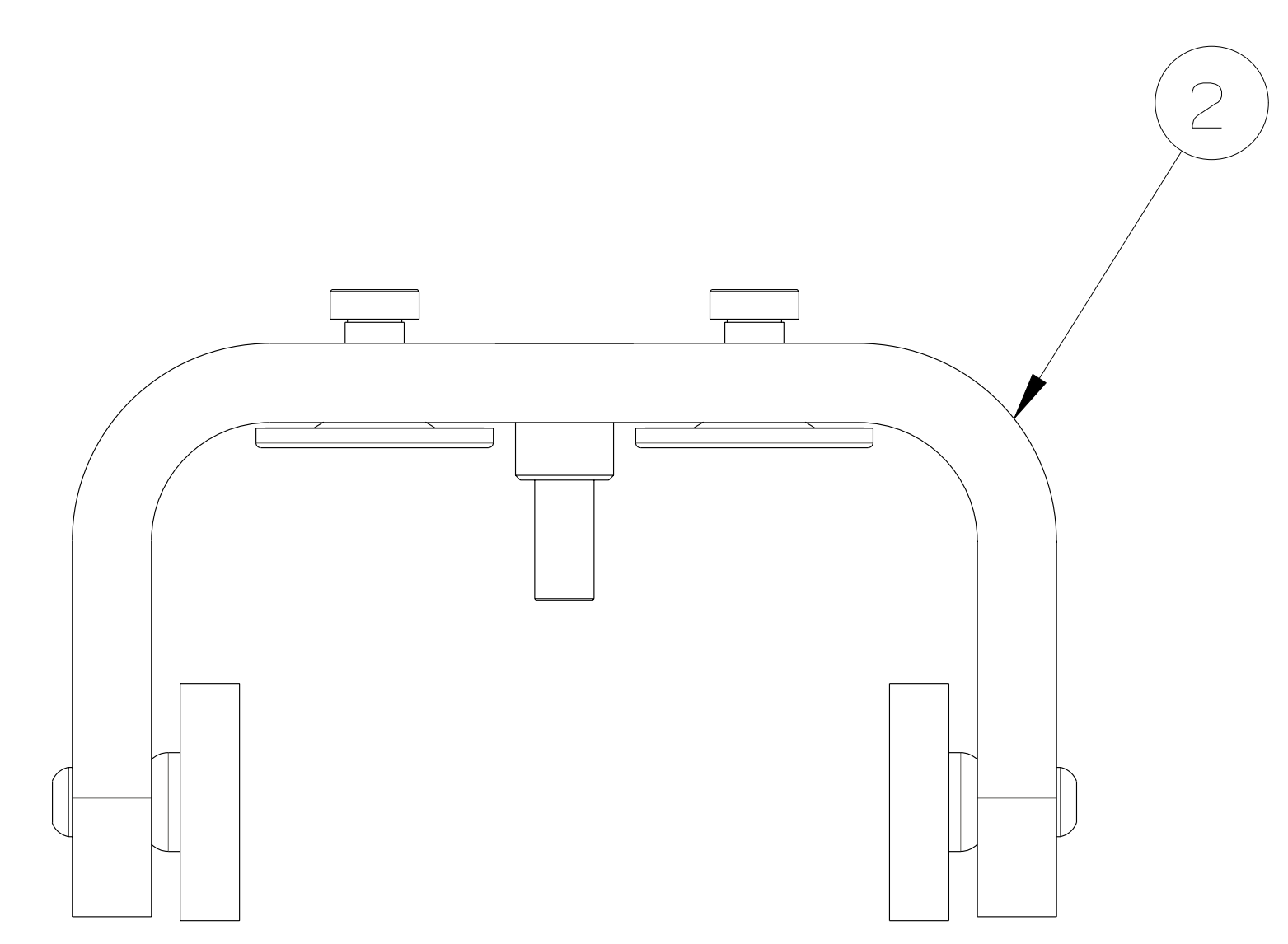
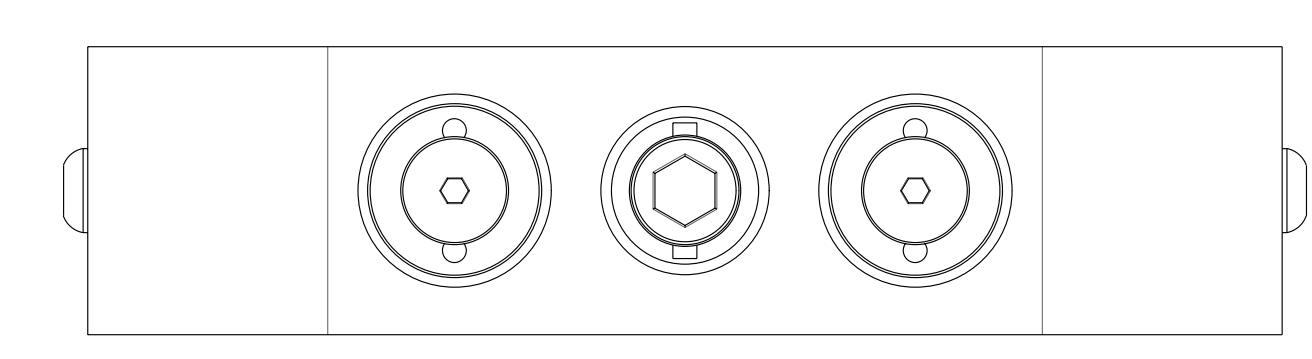
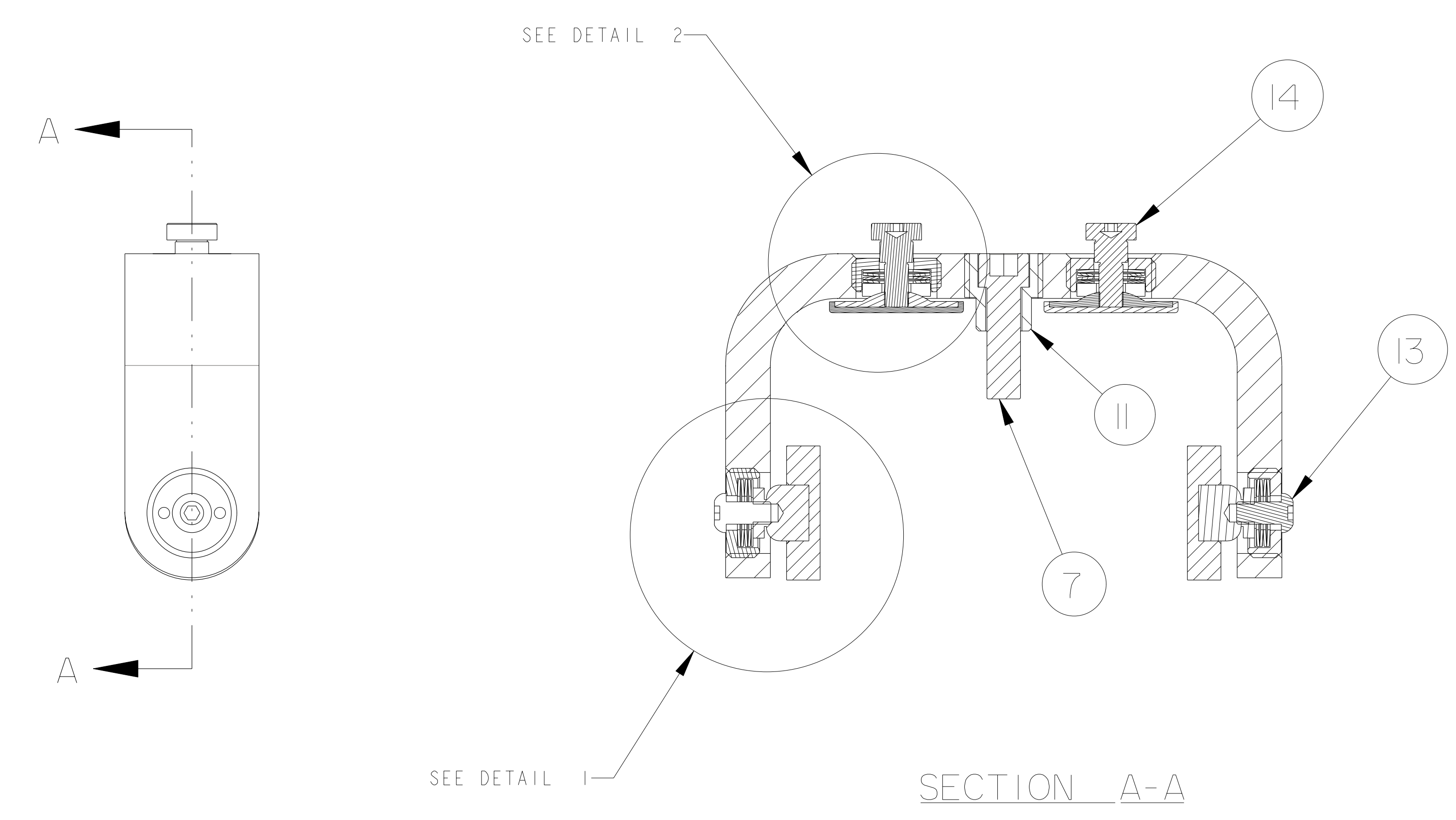


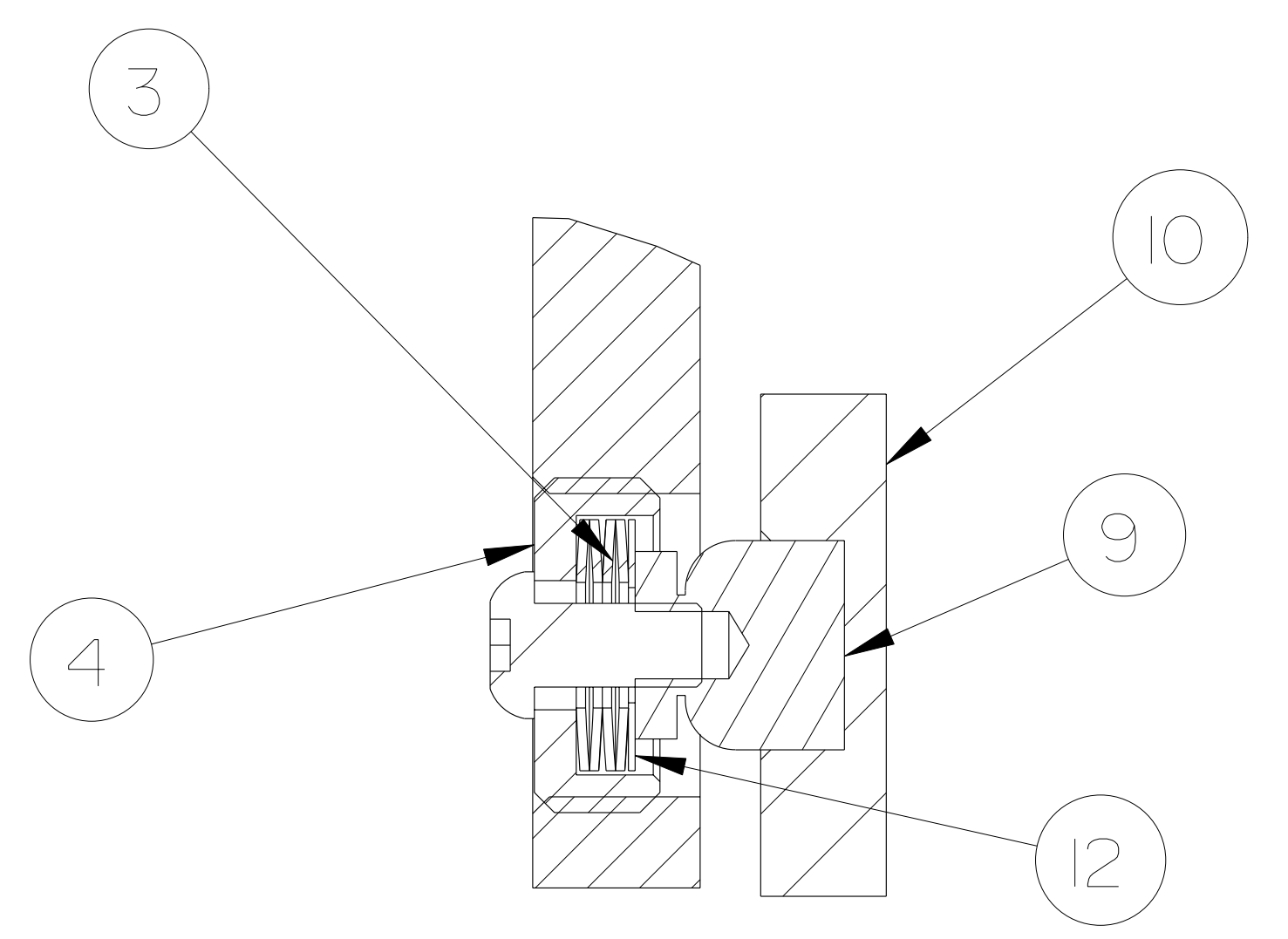
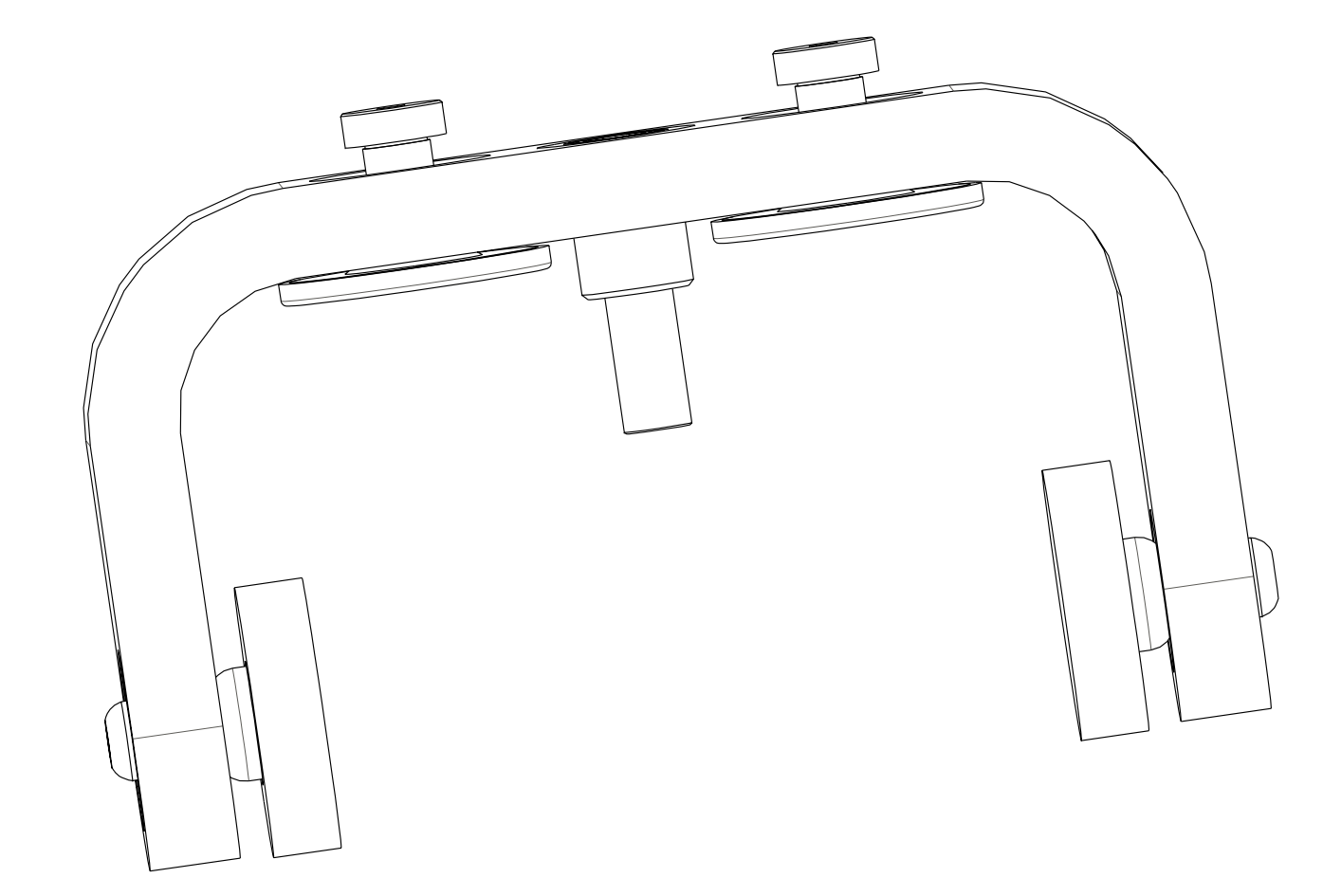
- NOTES:
1. INTERPRET DIMENSIONS AND TOLERANCES PER ANSI Y14.5M
 2. DIMENSIONS ARE IN INCHES
 3. DIMENSIONS APPLY AT ROOM TEMPERATURE. OPERATING TEMP 80 K
 4. GEOMETRY IS DEFINED IN PRO ENGINEER CAD MODELS/FILES
 5. DRAWING AND MODELS COMBINED DEFINE FINISHED MACHINED PART
 6. MAGNETIC PERMABILITY SHALL NOT EXCEED 1.02 AS TESTED BY A SEVERN-TYPE INDICATOR.



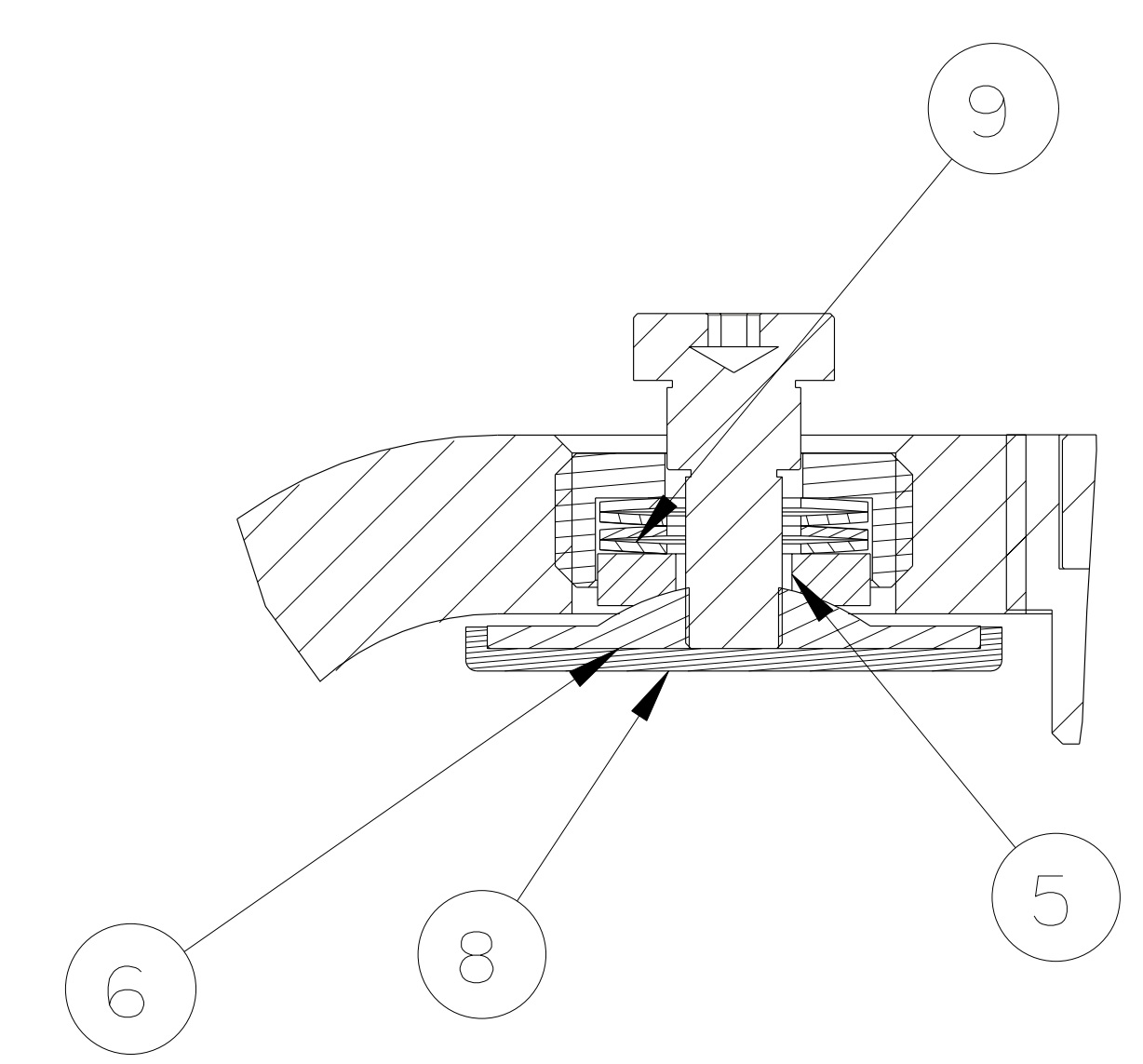
1
 SCALE 1 : 1



SECTION A-A



DETAIL 1
 SCALE 2.0



DETAIL 2
 SCALE 2.0

RELEASED FOR FABRICATION / INSTALLATION
 PPPL Drafting:

REV	CAGE CODE	PART OR IDENTIFYING NO	NOMENCLATURE OR DESCRIPTION	MATERIAL	SPECIFICATION	FIND NO
2	-14	3/8 SHDR X .75 LRG 5/16-18 UNC THRD SCREW		STAINLESS STEEL		14
2	-13	1/4-20 UNC x 1/2 LRG BUT HD CAP SCREW		STAINLESS STEEL		13
2	SE1405-274	FLAT WASHER, .75 OD, .34 TD				12
1	SE1405-278	BUSHING - SPACER				11
2	SE1405-273	SWIVEL PAD COVER				10
2	SE1405-272	SWIVEL PAD CLAMP				9
2	SE1405-267	CLAMP MODS PAD				8
1	-7	SCREW, 3/8-16 UNC-2A X 1.25		STAINLESS STEEL		7
2	SE1405-263P	WASHER, SPHERICAL, CONVEX				6
2	SE1405-277	PISTON, SPHERICAL CONCAVE				5
4	SE1405-261P	SCREW, SET, 15/16-20 UNEF-2A X 3/8				4
16	SE1405-258P	WASHER, BELLEVILLE, 3/4 OD, 3/8 TD				3
1	SE1405-276	BAR, CLAMP, HORIZONTAL				2
1	SE1405-275P	CLAMP ASSEMBLY, SHORT				1
next assy	SE1406-010	NEXT ASSEMBLY				

PARTS LIST

NO REPRESENTATION OR WARRANTY, EXPRESSED OR IMPLIED, IS MADE AS TO THE ACCURACY, COMPLETENESS OR USEFULNESS OF THE INFORMATION OR STATEMENTS CONTAINED IN THESE DRAWINGS, OR THAT THE USE OR DISCLOSURE OF ANY INFORMATION, APPARATUS, METHOD OR PROCESS DISCLOSED IN THESE DRAWINGS MAY NOT INFRINGE PRIVATE RIGHTS OF OTHERS. NO LIABILITY IS ASSUMED WITH RESPECT TO THE USE OF, OR FOR DAMAGES RESULTING FROM THE USE OF, ANY INFORMATION, APPARATUS, METHOD OR PROCESS DISCLOSED IN THESE DRAWINGS. DRAWINGS MADE AVAILABLE FOR INFORMATION TO BIDDER ARE NOT TO BE USED FOR OTHER PURPOSES, AND ARE TO BE RETURNED UPON REQUEST OF THE FORWARDING CONTRACTOR.

P THIS DRAWING PRODUCED ON PRO-ENGINEER

REV	DESCRIPTION	BY	DATE	CHK	DEPT	DATE	PE	REQ	DATE	ORNL	DOE	DATE

SCALE NOTED
 TOLERANCES UNLESS OTHERWISE SPECIFIED
 FRACTIONS :
 XX DECIMALS ± .01
 XXX DECIMALS ± .005
 ANGLES ±0°15'
 BREAK SHARP EDGES .06 MAX
 FINISH :25 UNLESS OTHERWISE SPECIFIED

DES: D WILLIAMSON 1-27-05
 DRW: GARY LOVETT 1-27-05
 CHK: M COLE 3-05
 DEPT: :
 PE: D WILLIAMSON 3-05
 CR: :
 PJ: :
 RD: :
 PPPL DRFT J SIEGLE 3-05

UT-BATTELLE
 NATIONAL COMPACT STELLARATOR EXPERIMENT
 CLAMP ASSEMBLY, SHORT

VERSION NO. 13
 PLANT X-10
 BLDG 5700
 FL 3
 SHT OF 1
 TYPE S
 CLASS U

RELEASE LEVEL Fabrication
 SE1405-275P
 REV 0