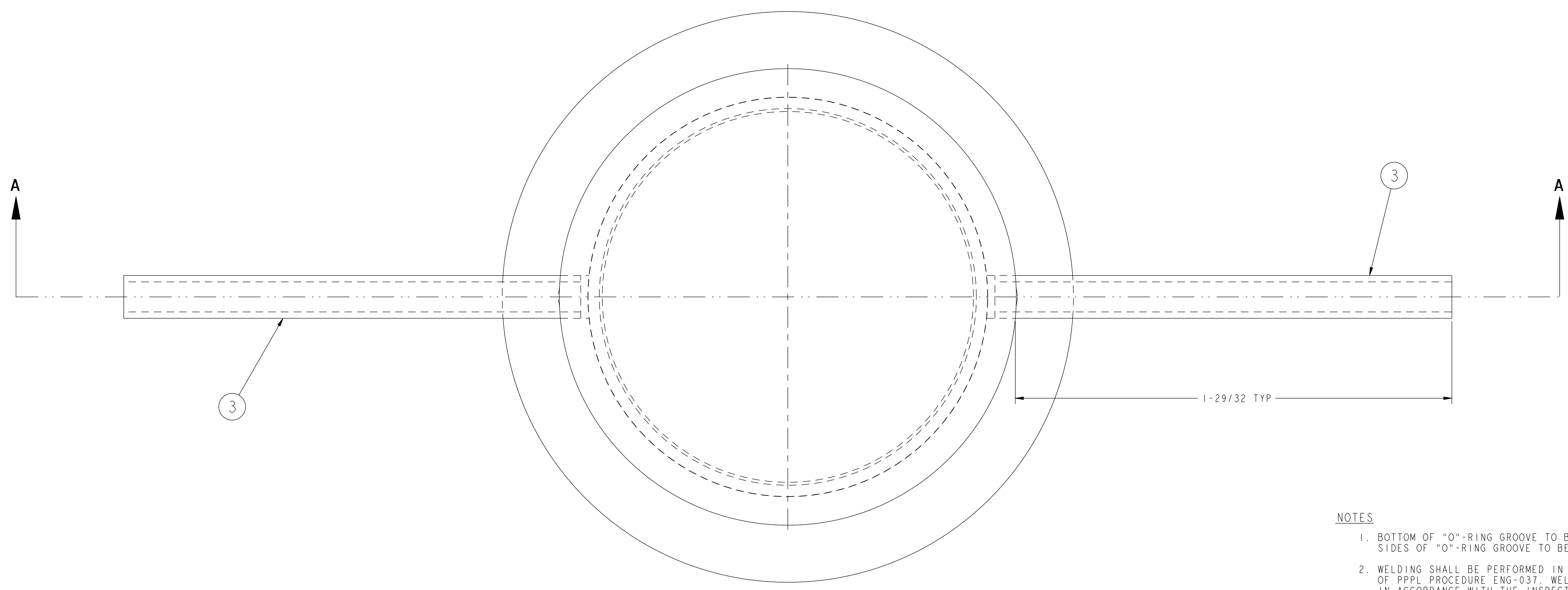
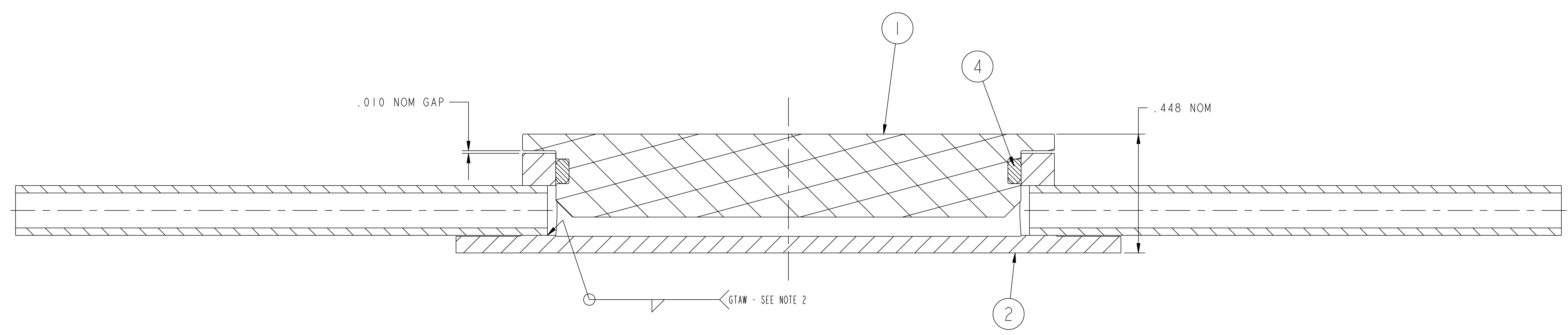


NO.	REVISION	BY	CH	SUP	APPROVED	DATE



**NOTES**

1. BOTTOM OF "O"-RING GROOVE TO BE MACHINED TO 32 FINISH. SIDES OF "O"-RING GROOVE TO BE MACHINED TO 63 FINISH.
2. WELDING SHALL BE PERFORMED IN ACCORDANCE WITH THE REQUIREMENTS OF PPPL PROCEDURE ENG-037. WELD INSPECTION SHALL BE PERFORMED IN ACCORDANCE WITH THE INSPECTION CRITERIA OF ASME B31.3 CATEGORY D.



**SECTION A-A**

**RELEASED FOR FABRICATION / INSTALLATION**  
PPPL Drafting:

PART ASSY NO.	PART NO.	DRAWING NO.	NOMENCLATURE OR DESCRIPTION	MATERIAL	QTY REQD
	4	THIS DWG	"O"-RING GASKET - PARKER #2-030 OR EQUIV.	VITON	
	3	THIS DWG	INLET/OUTLET TUBE - 3/16" O.D. x .028 WALL x 2" LG	304 S/S	
	2	THIS DWG	SPACER PUCK CUP	304 S/S	
	1	THIS DWG	SPACER PUCK PLUG	304 S/S	
01			MCWF SPACER PUCK ASSEMBLY		1

**PARTS LIST**

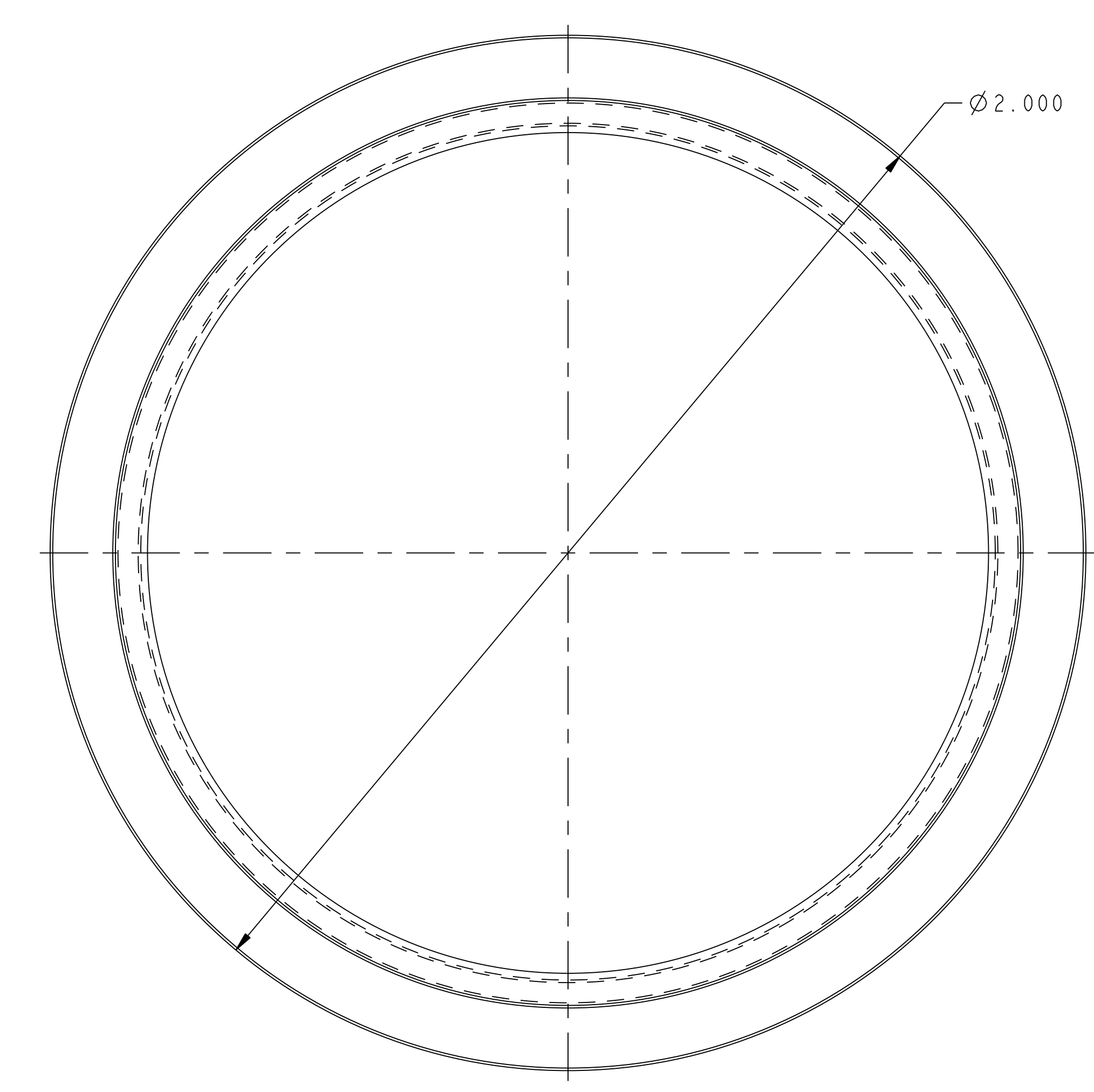
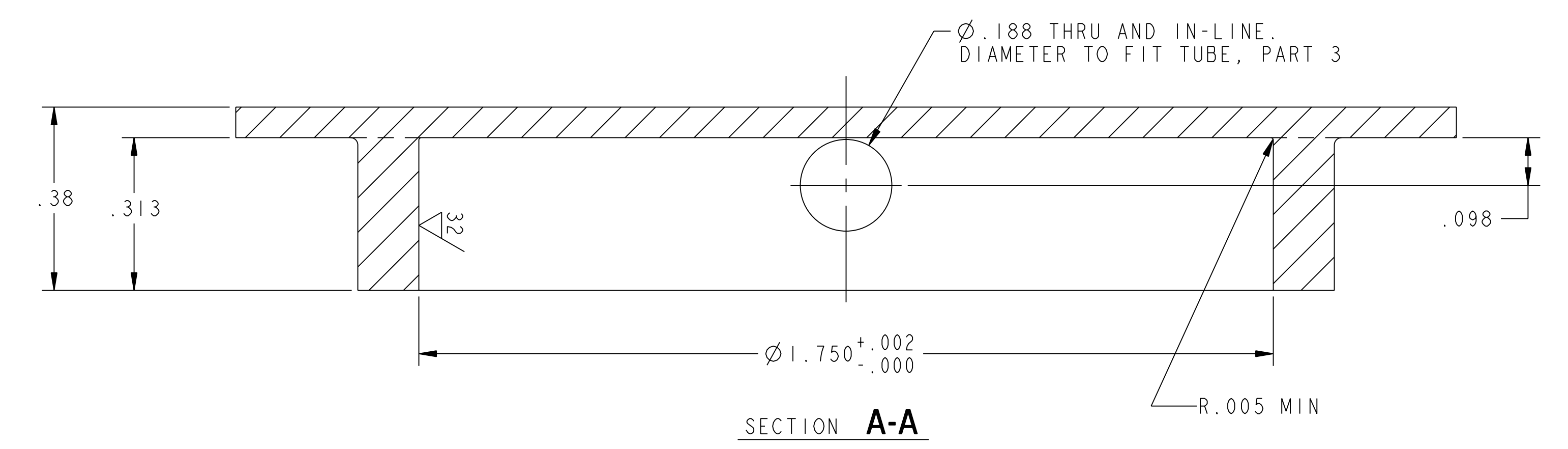
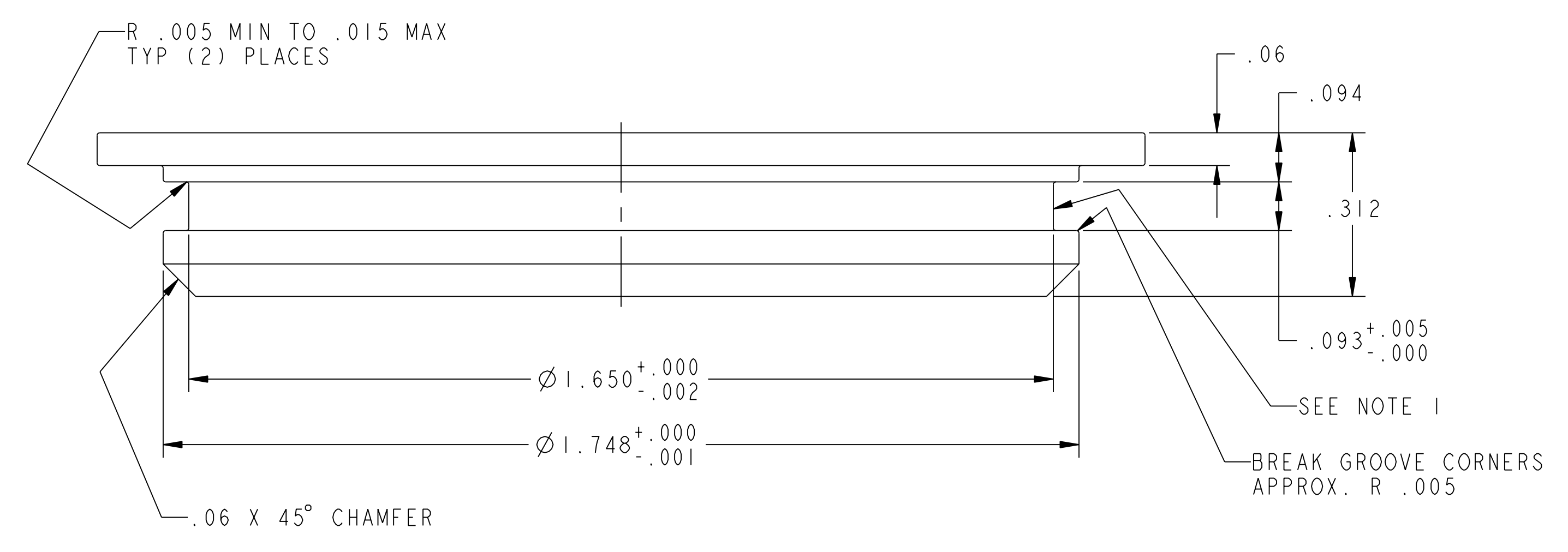
COMPUTER GENERATED DRAWING MANUAL CHANGES NOT PERMITTED Pro E	CENTRAL FILES: UNLESS OTHERWISE SPECIFIED	PRINCETON PLASMA PHYSICS LABORATORY PRINCETON UNIVERSITY <b>NATIONAL COMPACT STELLARATOR EXPERIMENT</b>			
DO NOT VERIFY INFORMATION BY SCALING DRAWING	DIMENSIONS ARE IN INCHES MACHINE SURFACES BREAK SHARP EDGES .005/.020	MODULAR COIL ASSEMBLY PROOF OF PRINCIPLE MCWF SPACER PUCK ASSEMBLY			
WEIGHT 0.3 lbs	TOLERANCES NON-CUMULATIVE	DSN: L. MORRIS	5-4-07	DRAWING NO:	
MODEL NAME SE1405-336-01	DECIMAL-INCH FRACTIONS	CHK: L. DUDEK	5-4-07	<b>SE1405-336</b>	
WELDING ENGINEER G. GETTELFINGER 5-4-07		ENGR: L. DUDEK	5-4-07	SHEET 1 OF 2	
		SUPV: J. SIEGEL	5-4-07	REV 0.1	

**RELEASE LEVEL: Fabrication**  
**DWG VERSION NO: 0**

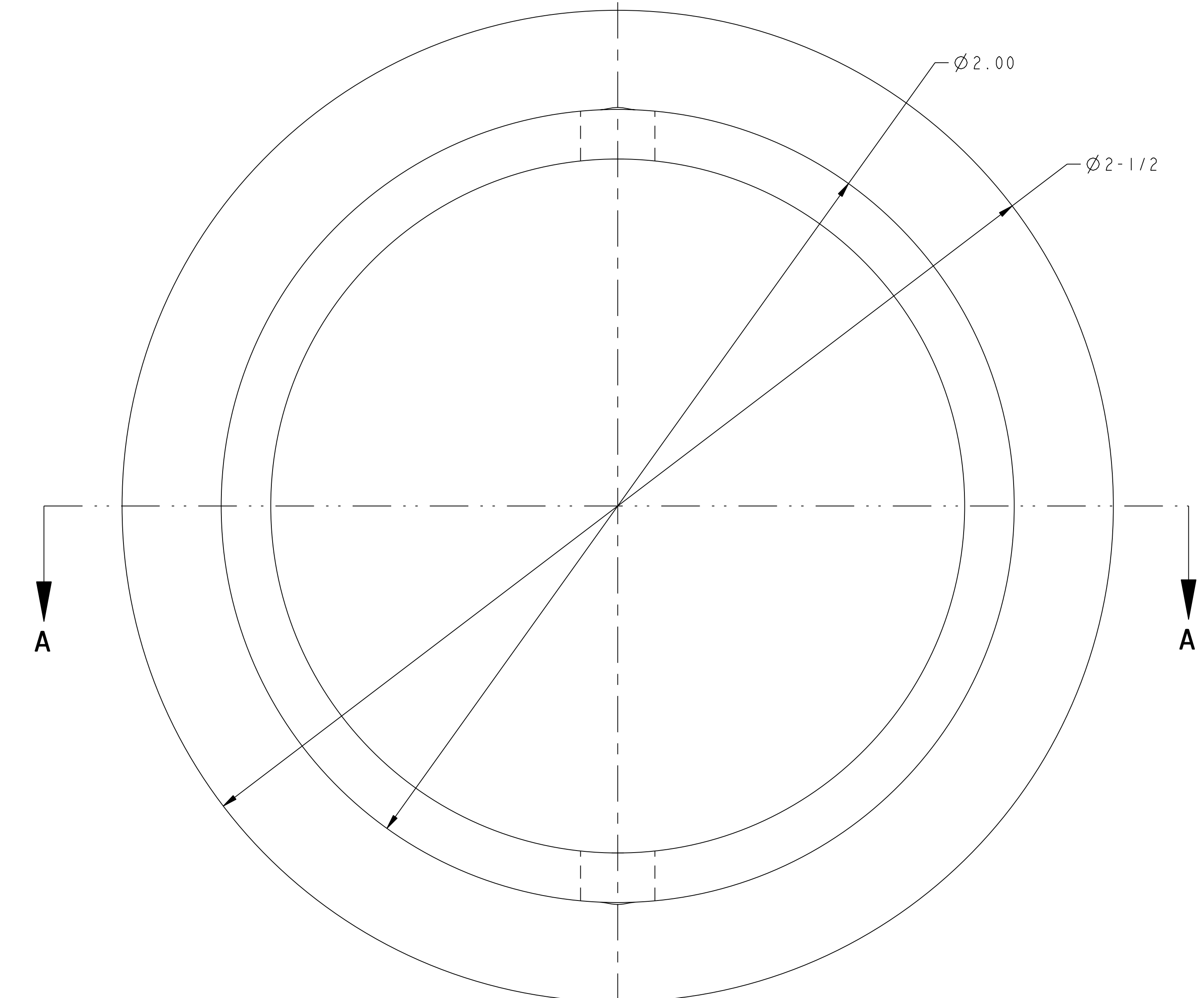
NCSX-SET 405-336

NCSX-ASSY-FORMAT.E

NO.	REVISION	BY	CH	SUP	APPROVED	DATE



1 SPACER PUCK PLUG



2 SPACER PUCK CUP

**RELEASED FOR  
FABRICATION / INSTALLATION**  
PPPL Drafting:

FOR NOTES AND BILL OF MATERIAL SEE SHEET 1

**RELEASE LEVEL: Fabrication**  
**DWG VERSION NO: 0**

WEIGHT	0.3 lbs
MODEL NAME	SE1405-336-01
WELDING ENGINEER	G. GETTELFINGER 5-3-07

COMPUTER GENERATED DRAWING MANUAL CHANGES NOT PERMITTED Pro E	CENTRAL FILES: UNLESS OTHERWISE SPECIFIED	PRINCETON PLASMA PHYSICS LABORATORY PRINCETON UNIVERSITY <b>NATIONAL COMPACT STELLARATOR EXPERIMENT</b>			
DO NOT VERIFY INFORMATION BY SCALING DRAWING	DIMENSIONS ARE IN INCHES MACHINE SURFACES BREAK SHARP EDGES .005/.020	MODULAR COIL ASSEMBLY PROOF OF PRINCIPLE MCWF SPACER PUCK ASSEMBLY			
NEXT ASSEMBLY	TOLERANCES NON-CUMULATIVE DECIMAL-INCH FRACTIONS .X ±.010 0°-12° ±.125 .XX ±.030 12°-12° ±.125 .XXX ±.005 12°-120° ±.125 ANGULAR ±.0°-15° OVER 120° ±.125	DSN: L. MORRIS	5-3-07	DRAWING NO:	SE1405-336
		CHK: L. DUDEK	5-3-07	SHEET 2 OF 2	REV 0.1
		SUPV: J. SIEGEL	5-3-07		