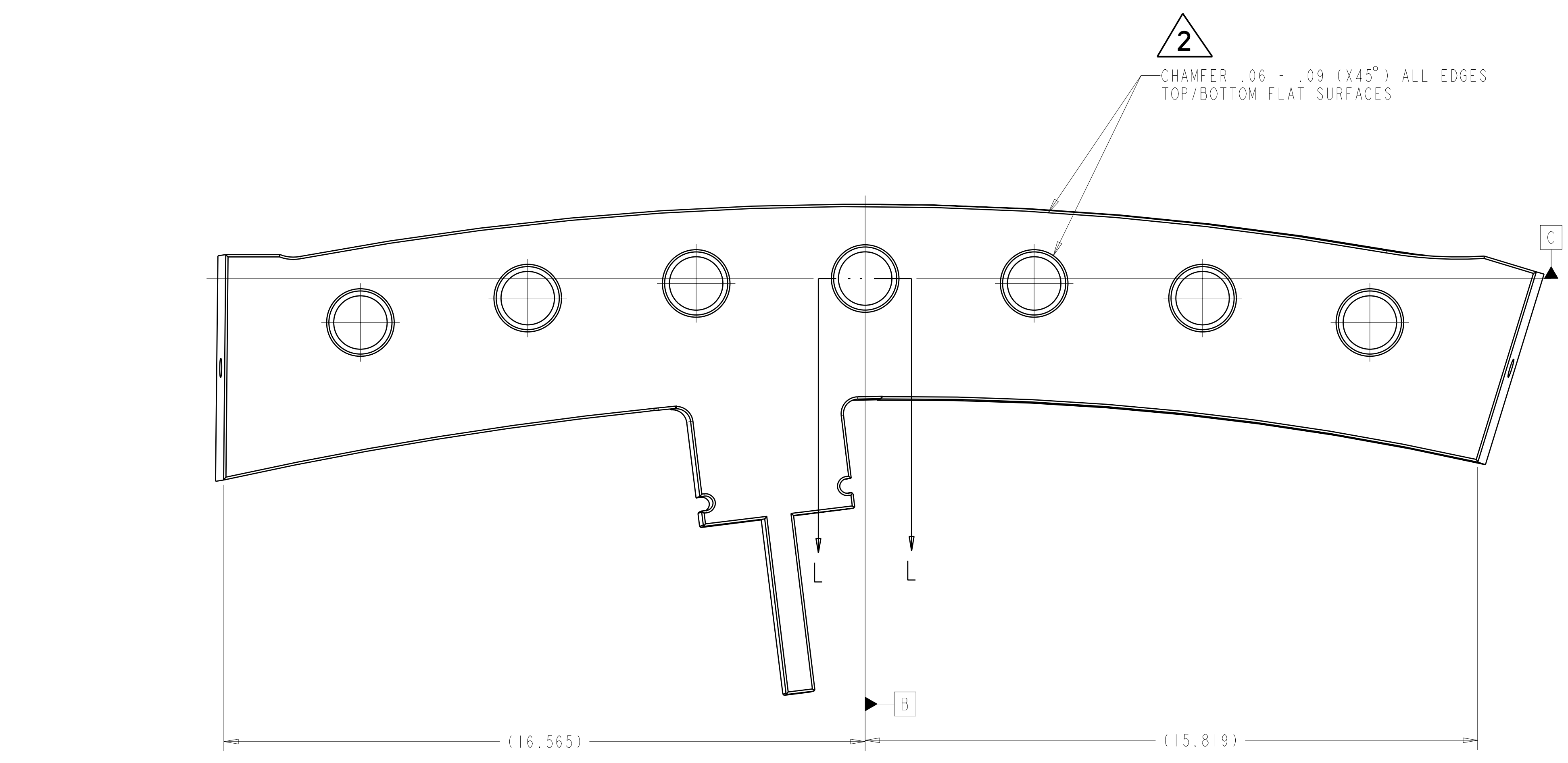
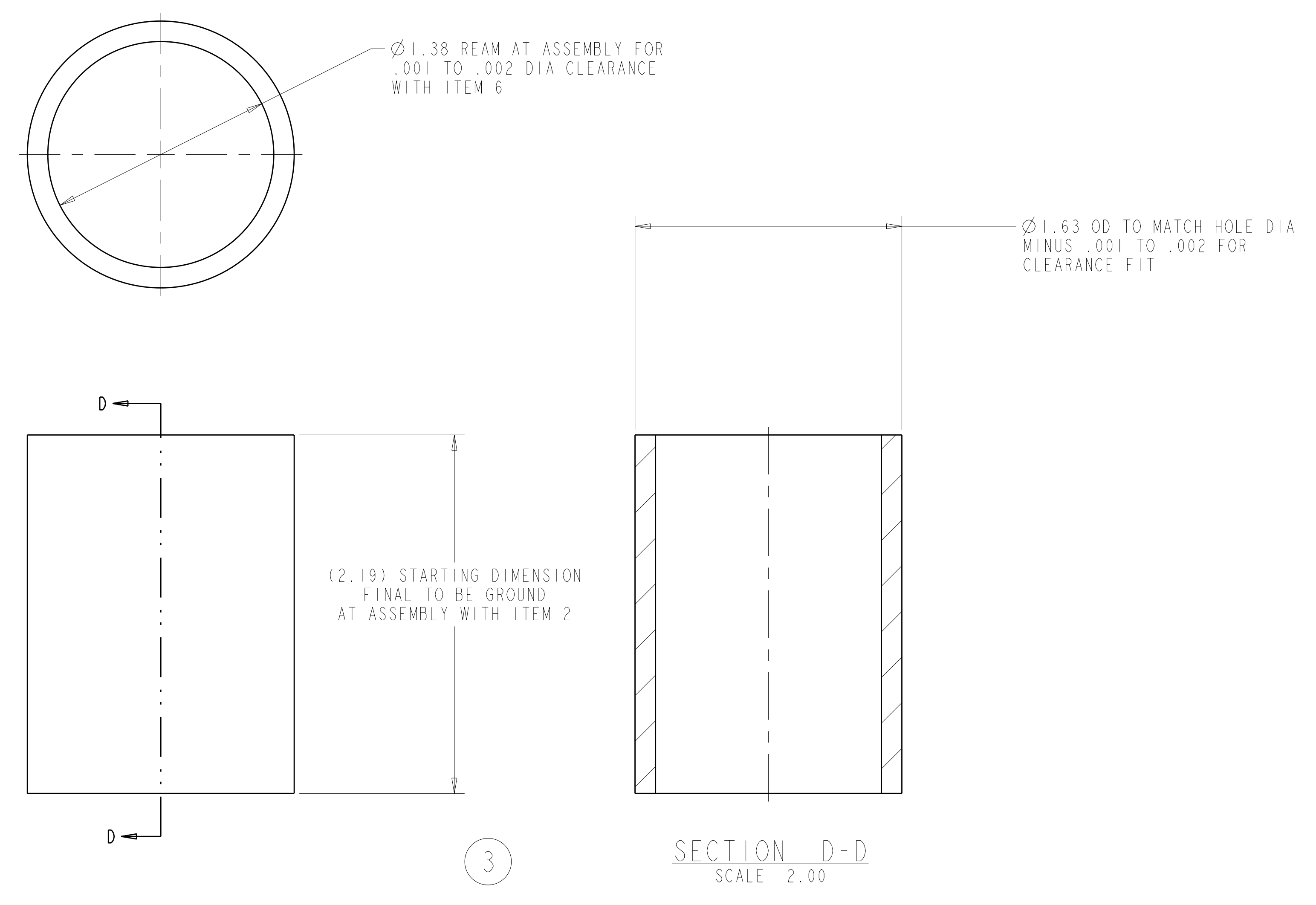
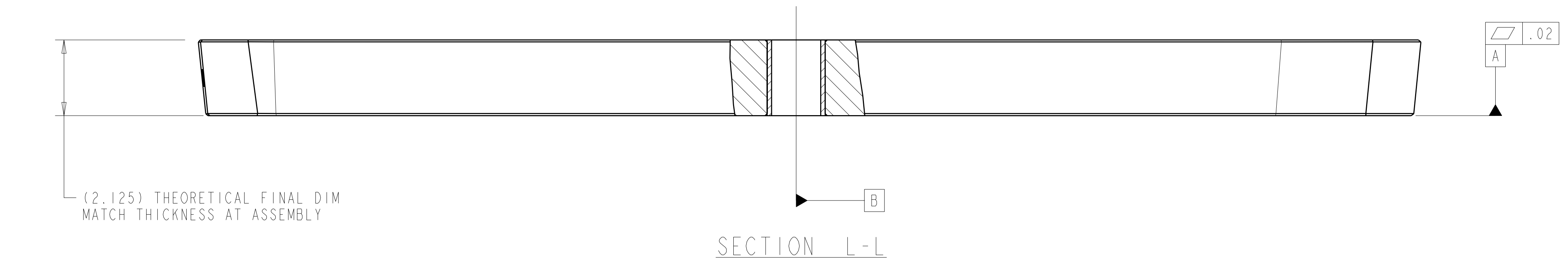


- NOTES:
- INTERPRET DIMENSIONS AND TOLERANCES PER ANSI Y14.5M.
 - DIMENSIONS ARE IN INCHES.
 - DIMENSIONS APPLY AT TEMPERATURE OF 20-30°C (68-86°F).
 - DRAWING DEPICTS FINAL MACHINED STATE OF ASSEMBLY DEFINED BY PRO/ENGINEER FILE SE141-048.ASM.
 - APPROXIMATE WEIGHT=105 LBS.
 - SEE LATEST REVISION OF SPECIFICATION NCSX-CSPC-141-03 FOR ADDITIONAL REQUIREMENTS.
 - BOND INSULATING SLEEVE (ITEM 3) INTO SHIM (ITEM 2) USING LOCTITE 411 PER MANUFACTURER'S INSTRUCTIONS.
 - SHIM MATERIAL FROM SAME CASTING AS PART SE141-114. MARK FOR IDENTIFICATION.



RELEASED FOR FABRICATION / INSTALLATION
PPPL Drafting:

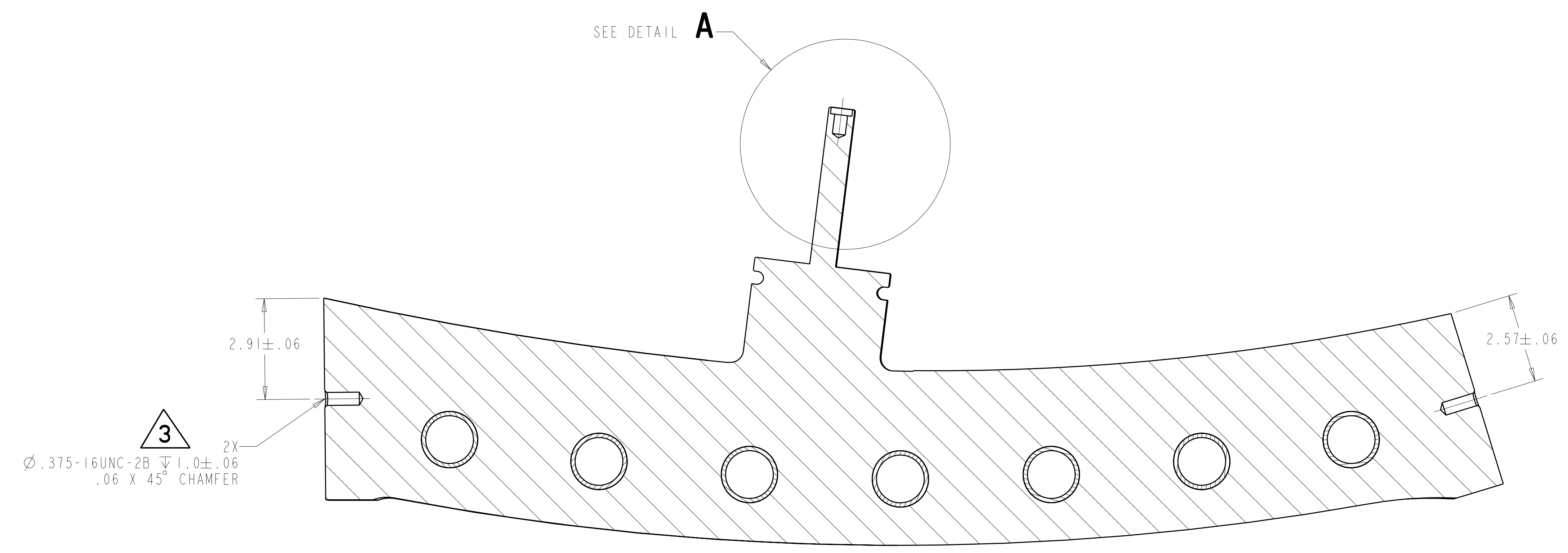
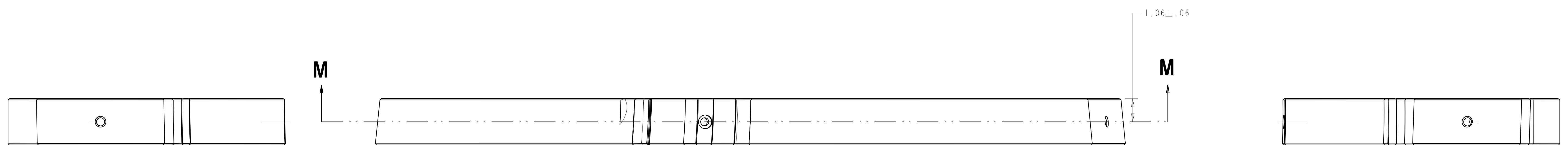
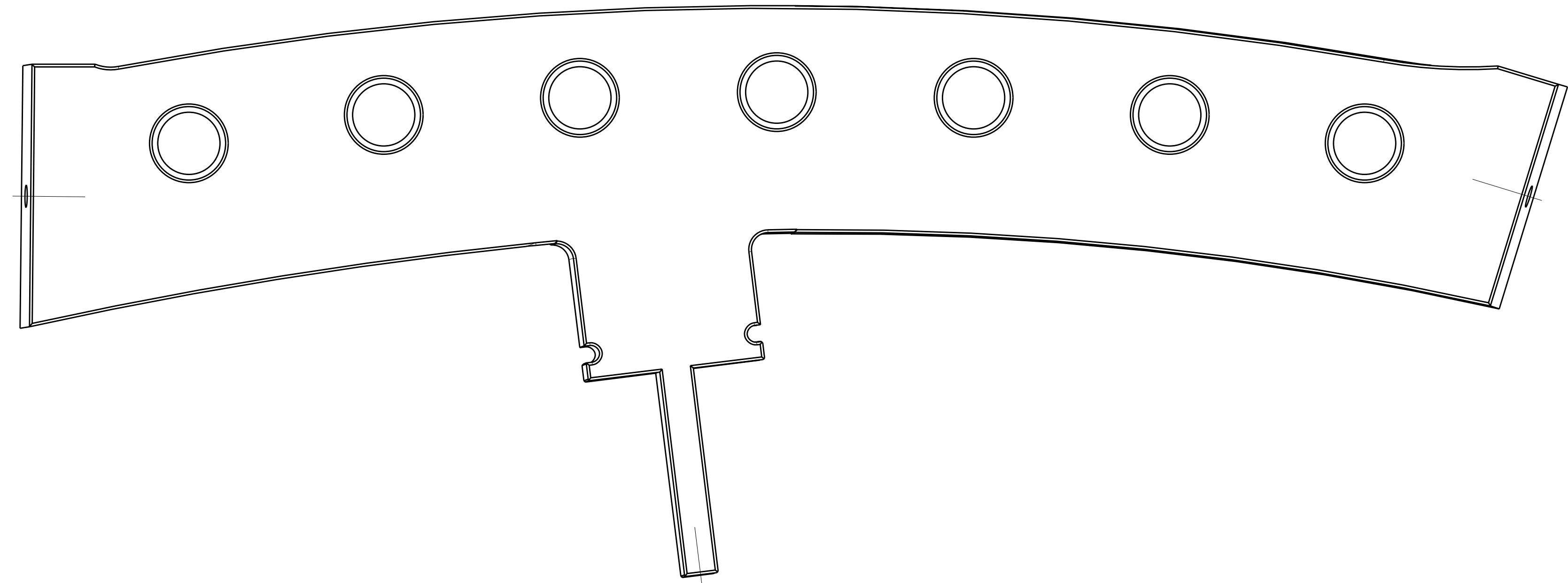
REV	DESCRIPTION	BY	DATE	CHK	DEPT	DATE	PE	REQ	DATE	ORNL	DOE	DATE
3	REVISED ASM AND DRAWING PER ECN 5112 AND 5128	GLL	06/08	MJC			DEW					
2	REVISED ASM AND DRAWING PER ECN 5059	GLL	12/03	MJC			DEW					
1	REVISED "T" PROFILE PER ECN-4903	GLL	07/04	MJC			DEW					

REV	DESCRIPTION	BY	DATE	CHK	DEPT	DATE	PE	REQ	DATE	ORNL	DOE	DATE
3	REVISED ASM AND DRAWING PER ECN 5112 AND 5128	GLL	06/08	MJC			DEW					
2	REVISED ASM AND DRAWING PER ECN 5059	GLL	12/03	MJC			DEW					
1	REVISED "T" PROFILE PER ECN-4903	GLL	07/04	MJC			DEW					

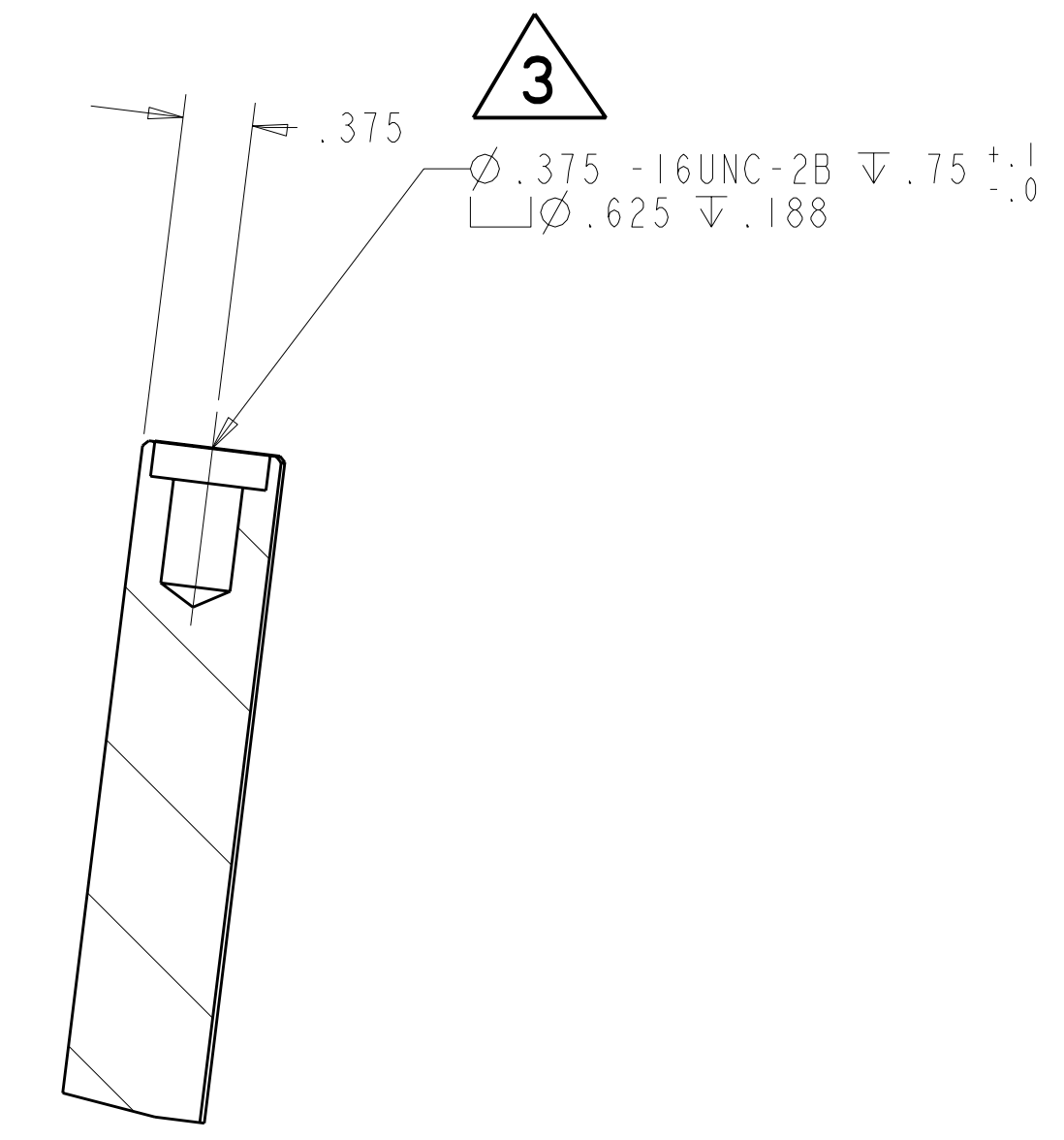
NO REPRESENTATION OR WARRANTY, EXPRESSED OR IMPLIED, IS MADE AS TO THE ACCURACY, COMPLETENESS OR USEFULNESS OF THE INFORMATION OR STATEMENTS CONTAINED IN THESE DRAWINGS, OR THAT THE USE OR DISCLOSURE OF ANY INFORMATION, APPARATUS, METHOD OR PROCESS DISCLOSED IN THESE DRAWINGS MAY NOT INFRINGE PRIVATE RIGHTS OF OTHERS. NO LIABILITY IS ASSUMED WITH RESPECT TO THE USE OF, OR FOR DAMAGES RESULTING FROM THE USE OF, ANY INFORMATION, APPARATUS, METHOD OR PROCESS DISCLOSED IN THESE DRAWINGS. DRAWINGS MADE AVAILABLE FOR INFORMATION TO BIDDER ARE NOT TO BE USED FOR OTHER PURPOSES, AND ARE TO BE RETURNED UPON REQUEST OF THE FORWARDING CONTRACTOR.

P THIS DRAWING PRODUCED ON PRO-ENGINEER

DES	G LOVETT	6-30-04	Oak Ridge National Laboratory managed for the DEPARTMENT OF ENERGY under U.S. GOVERNMENT contract DE-AC05-00OR22725 UT-BATTELLE, LLC. Oak Ridge, Tennessee							
DRW	P MILLER	6-30-04	PROJECT NAME							
CHK	M COLE	6-30-04	NATIONAL COMPACT STELLARATOR EXPERIMENT							
SECT	:	:	POL BREAK SHIM ASSEMBLY TYPE-A							
DEPT	:	:	POL BREAK SHIM ASSEMBLY TYPE-A							
PE	D WILLIAMSON	6-30-04	POL BREAK SHIM ASSEMBLY TYPE-A							
CR	:	:	POL BREAK SHIM ASSEMBLY TYPE-A							
PJ	:	:	POL BREAK SHIM ASSEMBLY TYPE-A							
REQ	:	:	POL BREAK SHIM ASSEMBLY TYPE-A							
FINISH	.125 UNLESS OTHERWISE SPECIFIED	:	POL BREAK SHIM ASSEMBLY TYPE-A							
PPPL DRFT	J SIEGEL	6-30-04	VERSION NO.	PLANT	BLDG	FL	SHT	OF	TYPE	CLASS
			6	X-10	5700	3	1	2	S	U
			RELEASE LEVEL	SE141-048						
			Fabrication							



SECTION M-M



DETAIL A
 SCALE 1.00

**RELEASED FOR
 FABRICATION / INSTALLATION**
 PPPL Drafting:

Oak Ridge National Laboratory managed for the DEPARTMENT OF ENERGY under U.S. GOVERNMENT contract DE-AC05-00OR22725 UT-BATTELLE, LLC. Oak Ridge, Tennessee PROJECT NAME:									
UT-BATTELLE									
NATIONAL COMPACT STELLARATOR EXPERIMENT									
POL BREAK SHIM ASSEMBLY TYPE-A									
VERSION NO.	PLANT	BLDG	FL	SHT	OF	TYPE	CLASS		
5+	X-10	5700	3	2	2	S	U		
RELEASE LEVEL		SE141-048						REV	
Fabrication								3	