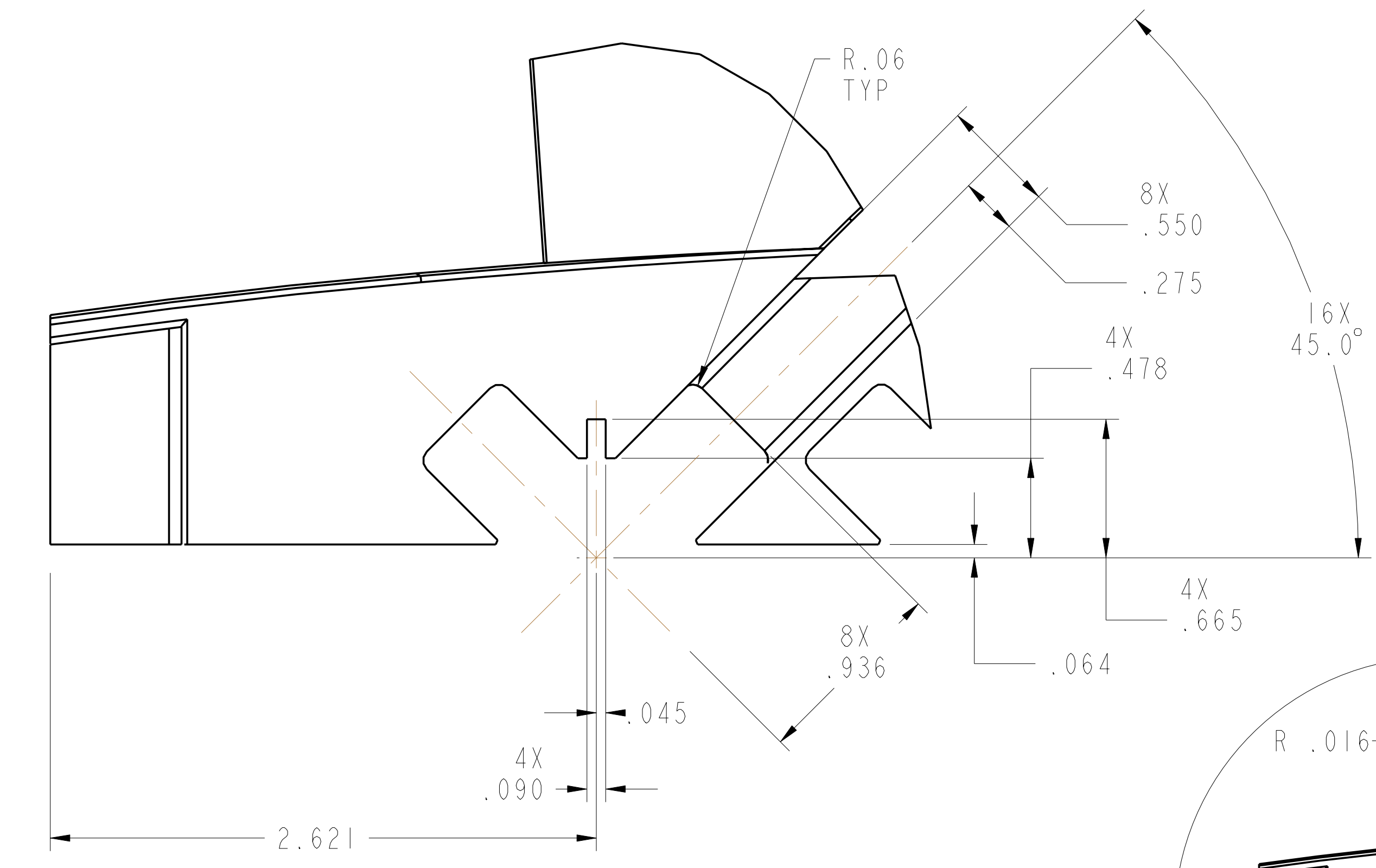
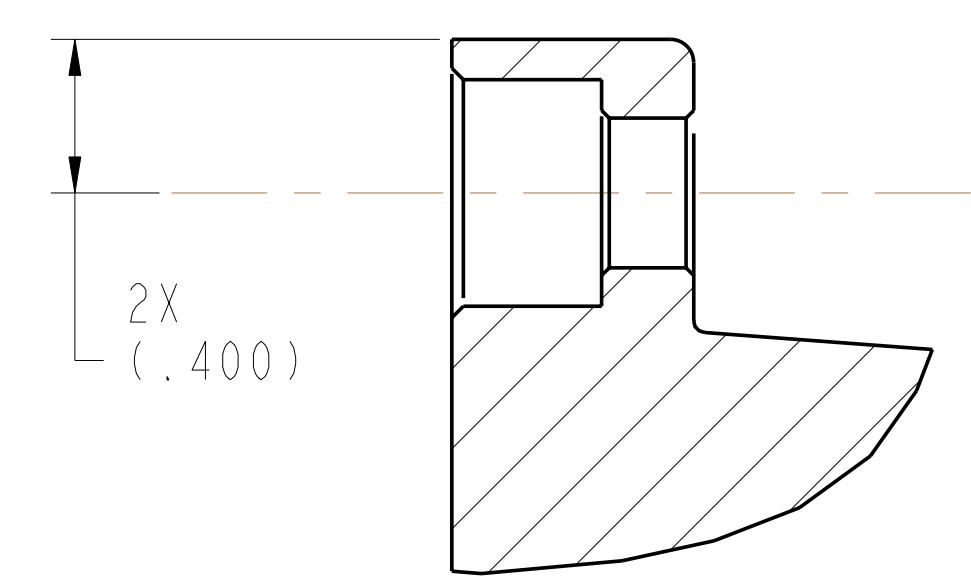


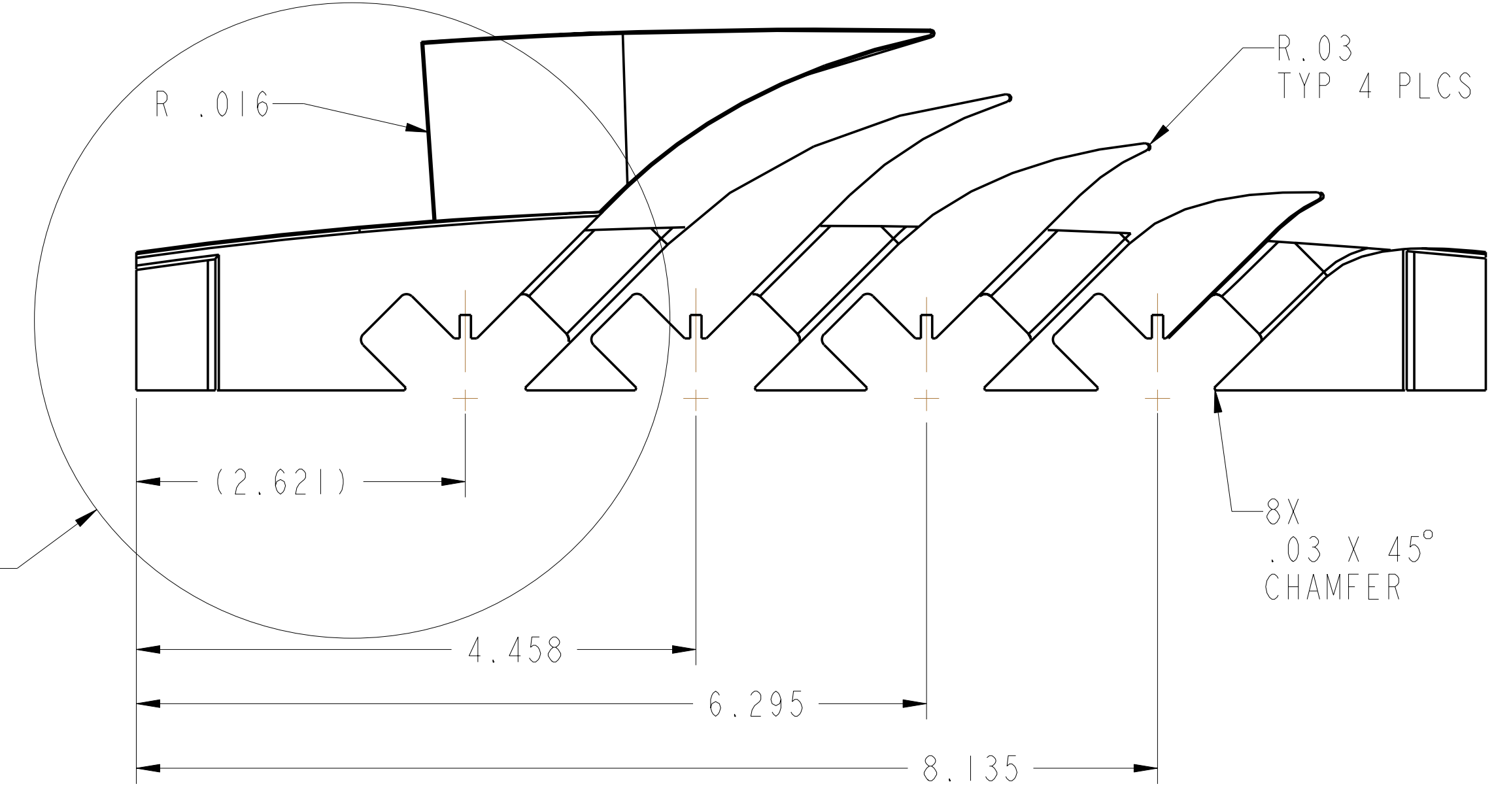
ISOMETRIC VIEW
 SCALE 1.00



DETAIL A
 SCALE 2.00

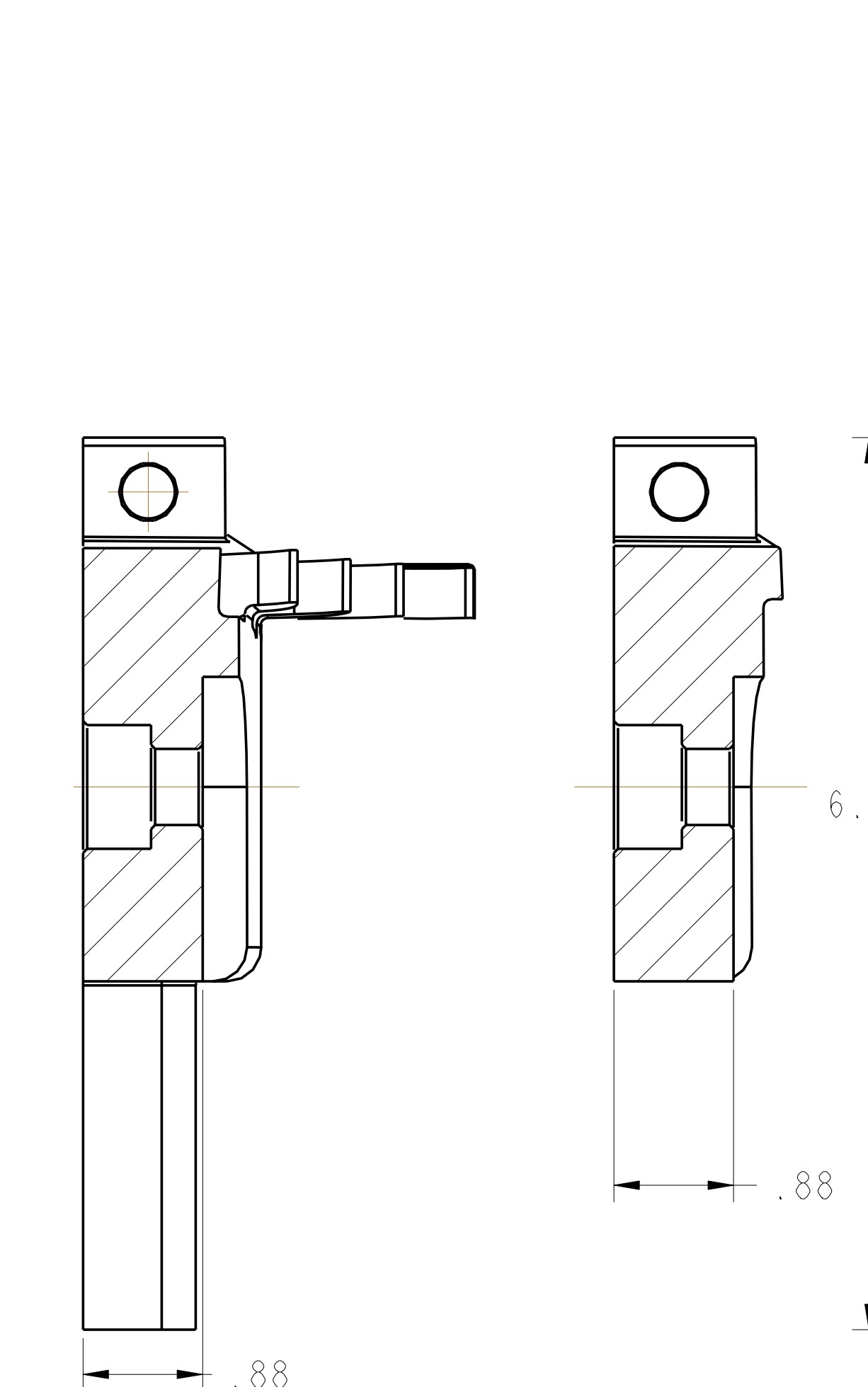


SECTION C-C
 SCALE 2.00

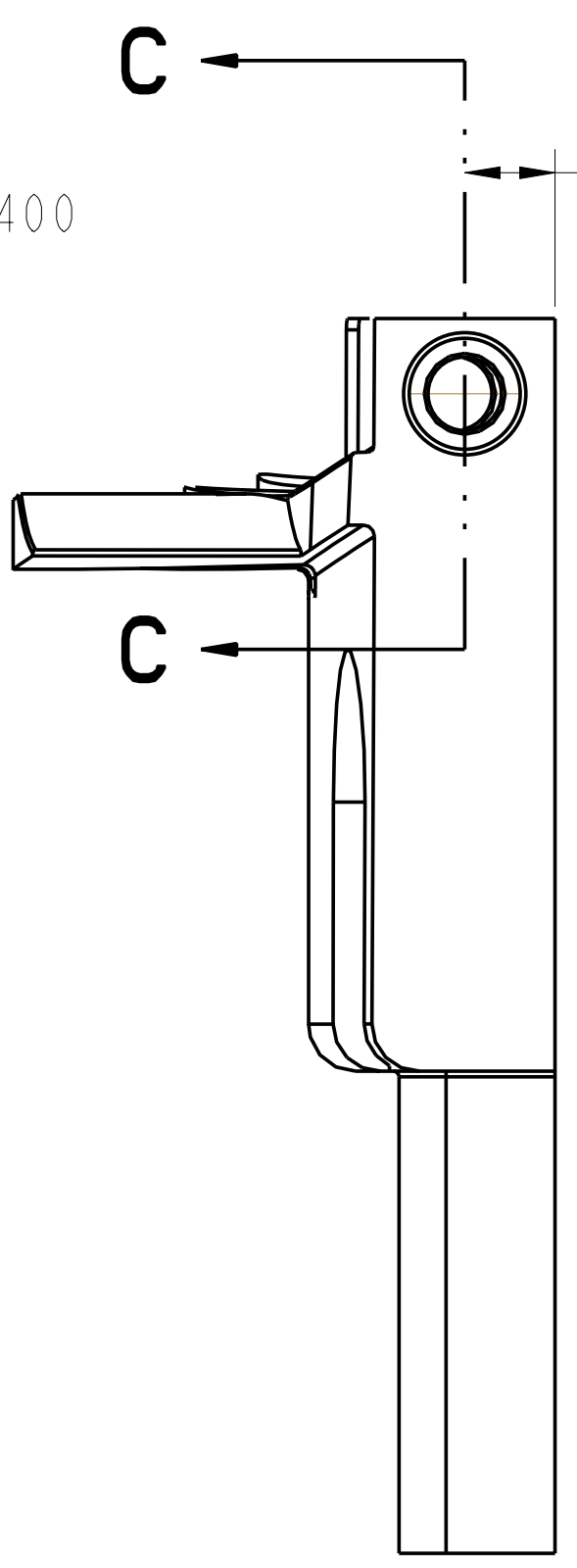
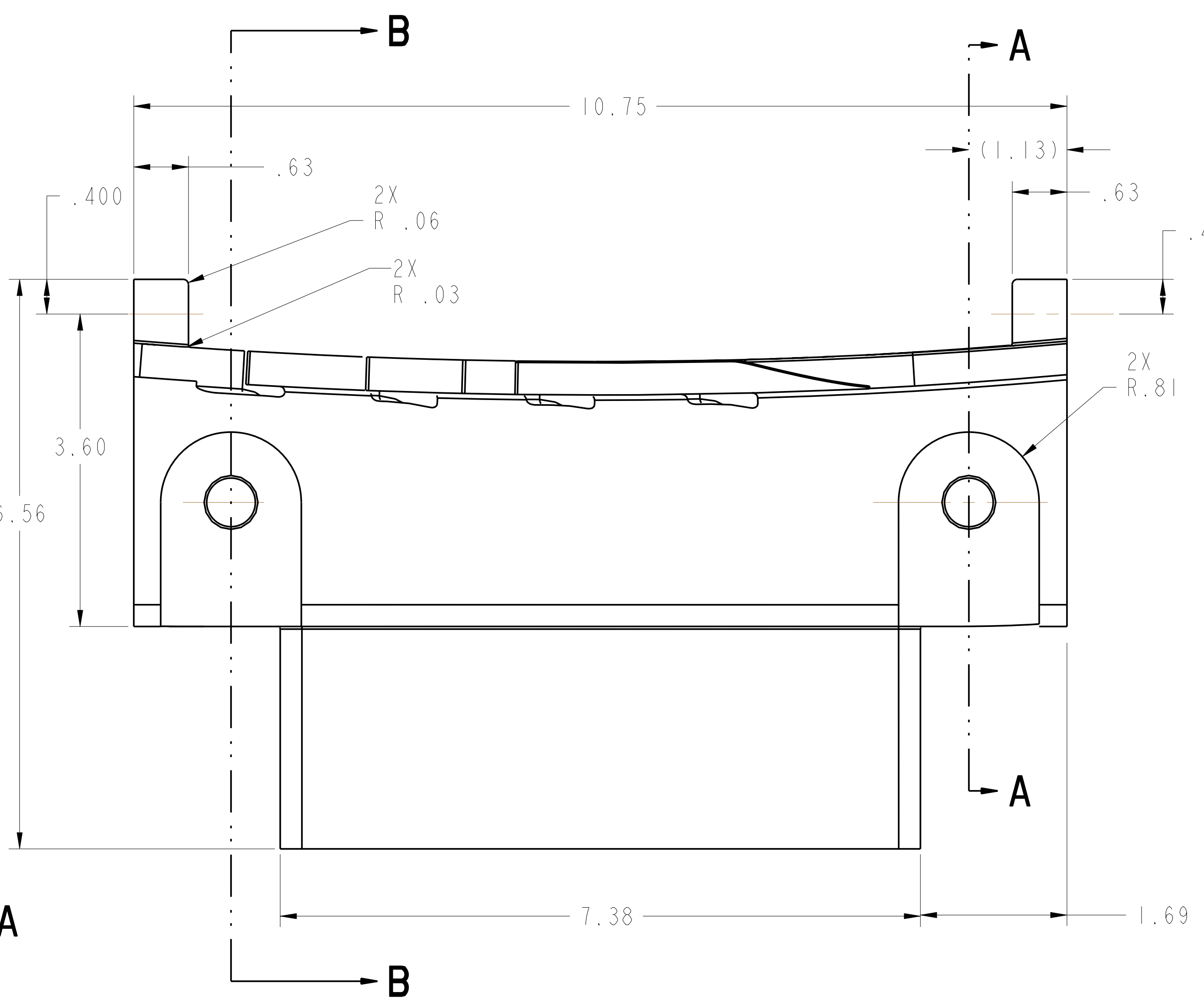


SEE DETAIL A

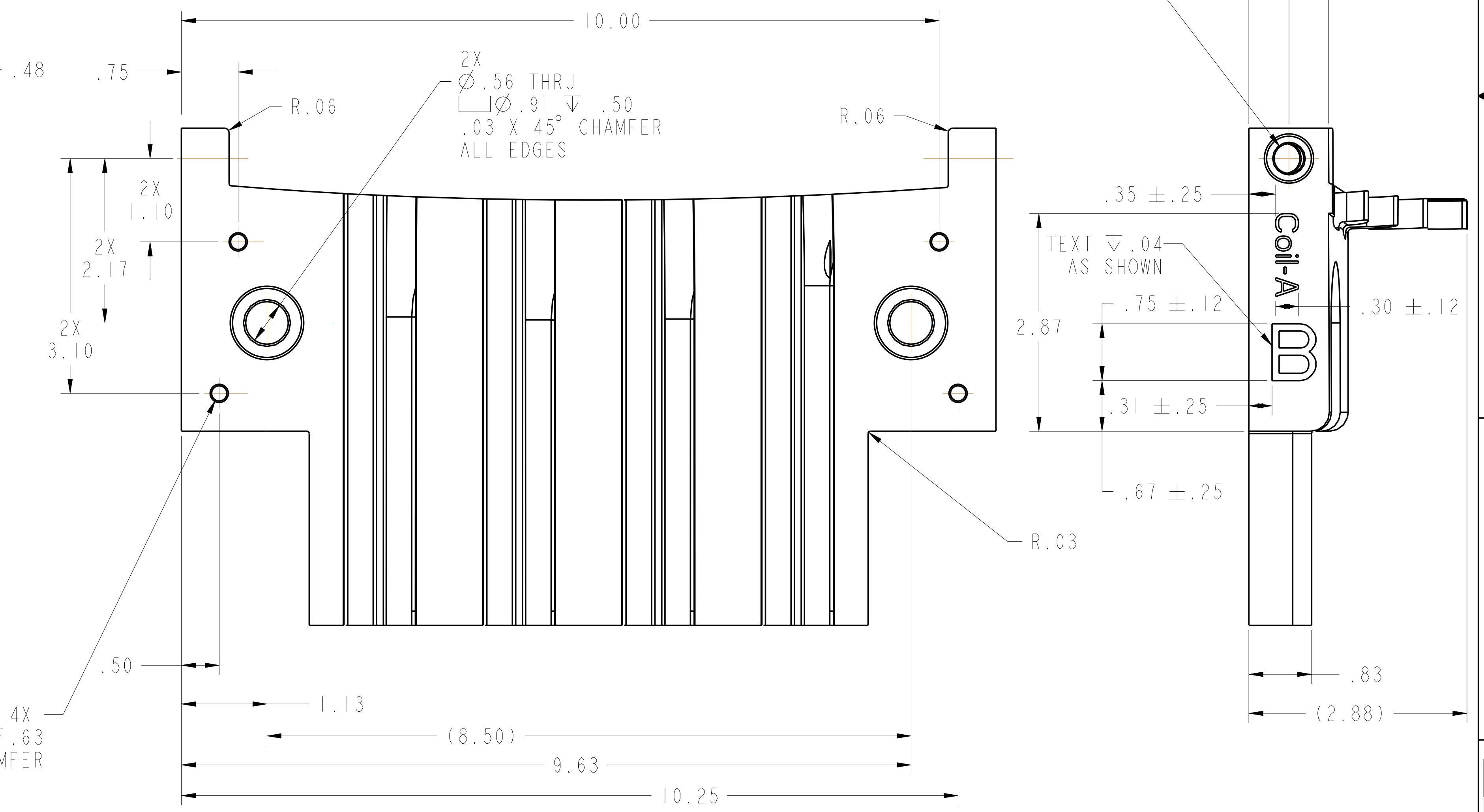
- NOTES:
 1. DRAWING PREPARED IN ACCORDANCE WITH ASME Y14.100-2000.
 2. INTERPRET DIMENSIONS AND TOLERANCES PER ANSI Y14.5M
 3. DIMENSIONS ARE IN INCHES
 4. DIMENSIONS APPLY AT ROOM TEMPERATURE. OPERATING TEMP 80 K.
 5. GEOMETRY IS DEFINED IN PRO ENGINEER CAD MODELS/FILES SEI42A-135.PRT
 6. DRAWING AND MODELS COMBINED DEFINE FINISHED MACHINED PART.
 7. IN THE EVENT OF A DISCREPANCY BETWEEN THE CAD MODEL AND DRAWING, THE CAD MODEL SHALL TAKE PRECEDENCE.
 8. UNLESS OTHERWISE SPECIFIED, MACHINED SURFACES SHALL HAVE A PROFILE TOLERANCE = +/- 0.01 IN.



SECTION B-B SECTION A-A



SECTION C-C



1
 SCALE 1.00

AR	-1	SIDE "B" LOWER LEAD BLOCK	NEMA GRADE G11CR	
CAGE CODE	PART OR IDENTIFYING NO	NOMENCLATURE OR DESCRIPTION	MATERIAL	SPECIFICATION
SEI42A-080		NEXT ASSEMBLY		

RELEASED FOR FABRICATION / INSTALLATION
 PPPL Drafting:

NO REPRESENTATION OR WARRANTY, EXPRESSED OR IMPLIED, IS MADE AS TO THE ACCURACY, COMPLETENESS OR USEFULNESS OF THE INFORMATION OR STATEMENTS CONTAINED IN THESE DRAWINGS, OR THAT THE USE OR DISCLOSURE OF ANY INFORMATION, APPARATUS, METHOD OR PROCESS DISCLOSED IN THESE DRAWINGS MAY NOT INFRINGE PRIVATE RIGHTS OF OTHERS. NO LIABILITY IS ASSUMED WITH RESPECT TO THE USE OF, OR FOR DAMAGES RESULTING FROM THE USE OF, ANY INFORMATION, APPARATUS, METHOD OR PROCESS DISCLOSED IN THESE DRAWINGS. DRAWINGS MADE AVAILABLE FOR INFORMATION TO BIDDER ARE NOT TO BE USED FOR OTHER PURPOSES, AND ARE TO BE RETURNED UPON REQUEST OF THE FORWARDING CONTRACTOR.

P THIS DRAWING PRODUCED ON PRO-ENGINEER

REV	DESCRIPTION	BY	DATE	CHK	DEPT	DATE	PE	REG	DATE	ORNL	DOE	DATE

SCALE NOTED	DES	DATE
TOLERANCES UNLESS OTHERWISE SPECIFIED	P FOGARTY	02/06
FRACTIONS ±.01	DRW G LOVETT	02/06
XX DECIMALS ±.005	CHK M COLE	02/06
XXX DECIMALS ±0.15	SECT :	
ANGLES ±0.15°	DEPT :	
BREAK SHARP EDGES 06 MAX	PE D WILLIAMSON	02/06
FINISH .125 UNLESS OTHERWISE SPECIFIED	CR :	
	PJ :	
	RED :	
	PPPL DRFT J SIEGLE	02/06

UT-BATTELLE		Oak Ridge National Laboratory managed for the DEPARTMENT OF ENERGY under U.S. GOVERNMENT contract DE-AC05-00OR22725 UT-BATTELLE, LLC - Oak Ridge, Tennessee	
NATIONAL COMPACT STELLARATOR EXPERIMENT			
MODULAR COIL TYPE-A SIDE-B LOWER LEAD BLOCK DETAIL			
VERSION NO.	PLANT	BLDG	FL
15	X-10	5700	3
RELEASE LEVEL	SHT	OF	TYPE
Fabrication	1	1	S
	REV	U	

H
G
F
E
D
C
B
A