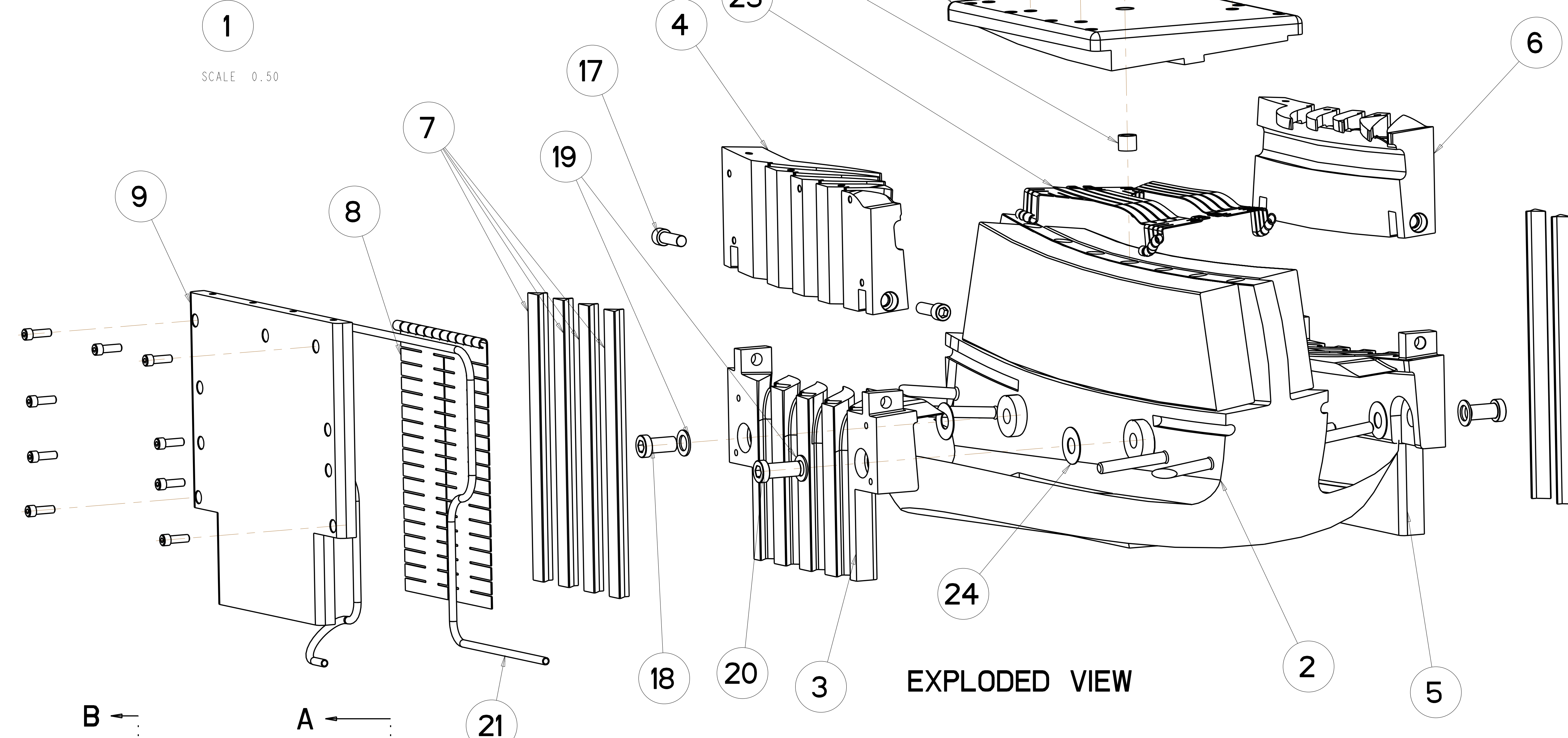


WINDING PACK SHOWN FOR INFORMATION ONLY (SE142C-293.PRT)

1 SCALE 0.50

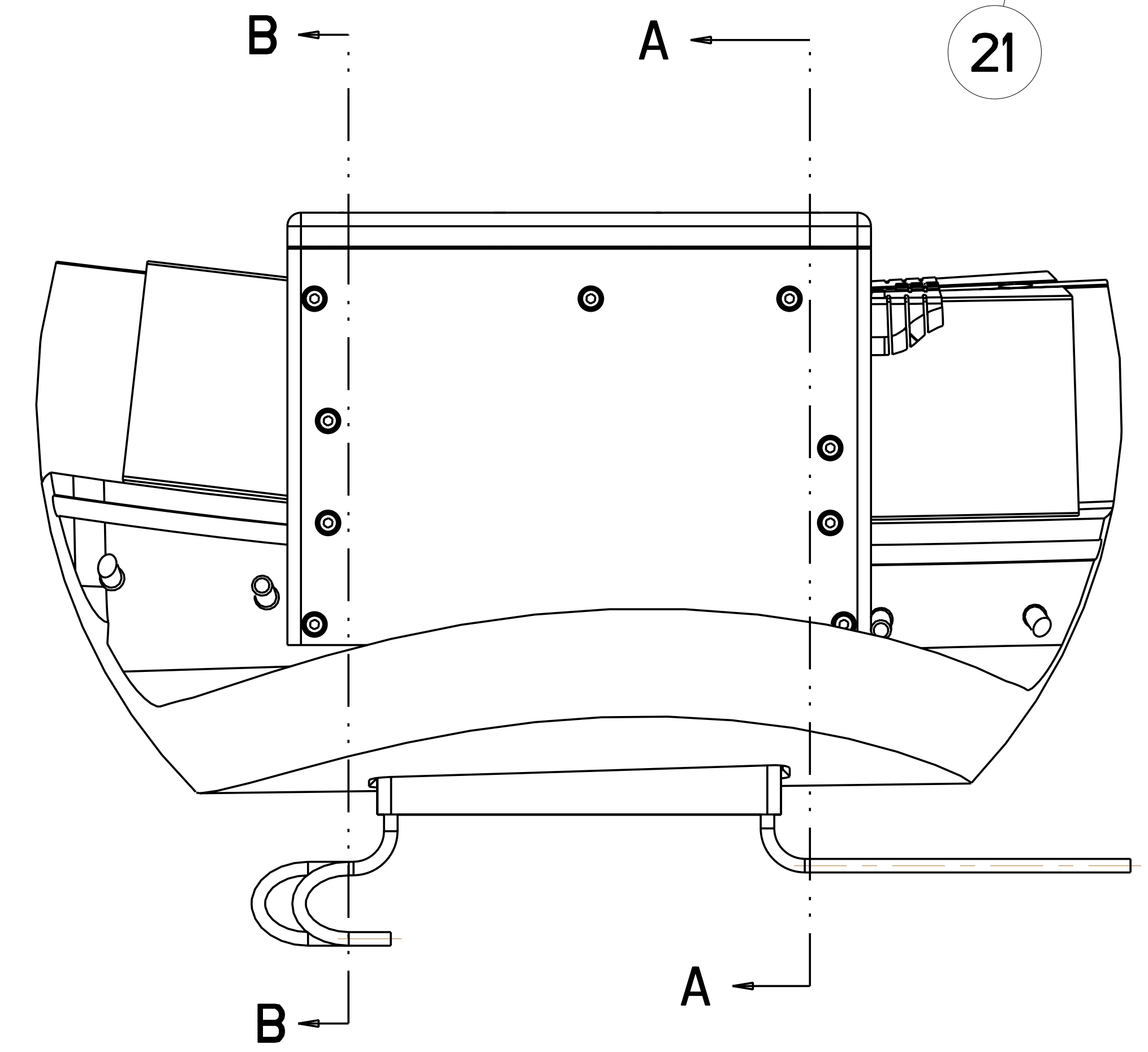
- NOTES:
- DRAWING PREPARED IN ACCORDANCE WITH ASME Y14.100-2000.
 - INTERPRET DIMENSIONS AND TOLERANCES PER ANSI Y14.5M
 - DIMENSIONS ARE IN INCHES
 - DIMENSIONS APPLY AT ROOM TEMPERATURE. OPERATING TEMP 80 K.
 - MAGNETIC PERMEABILITY NOT TO EXCEED 1.02 AS TESTED BY A SEVERN INDICATOR, AVAILABLE FROM:
 SEVERN ENGINEERING
 555 OLD STAGE RD., SUITE 14
 AUBURN, ALABAMA 36830
 - AVAILABLE FROM:
 McMASTER CARR
 600 COUNTY LINE RD
 ELMHURST, IL 60126
 - LUBRICATE THREADED SURFACE OF ITEM 13, 18, AND 20 WITH THRED-GARD ANTI-SEIZE COMPOUND FROM FEDERAL PROCESS CORP, CLEVELAND, OH.
 - TORQUE ITEM NO. 13, 18, AND 20 TO 20 ft-lbs.
 - SHIM AS REQUIRED BETWEEN ITEM 2, 3 AND 5



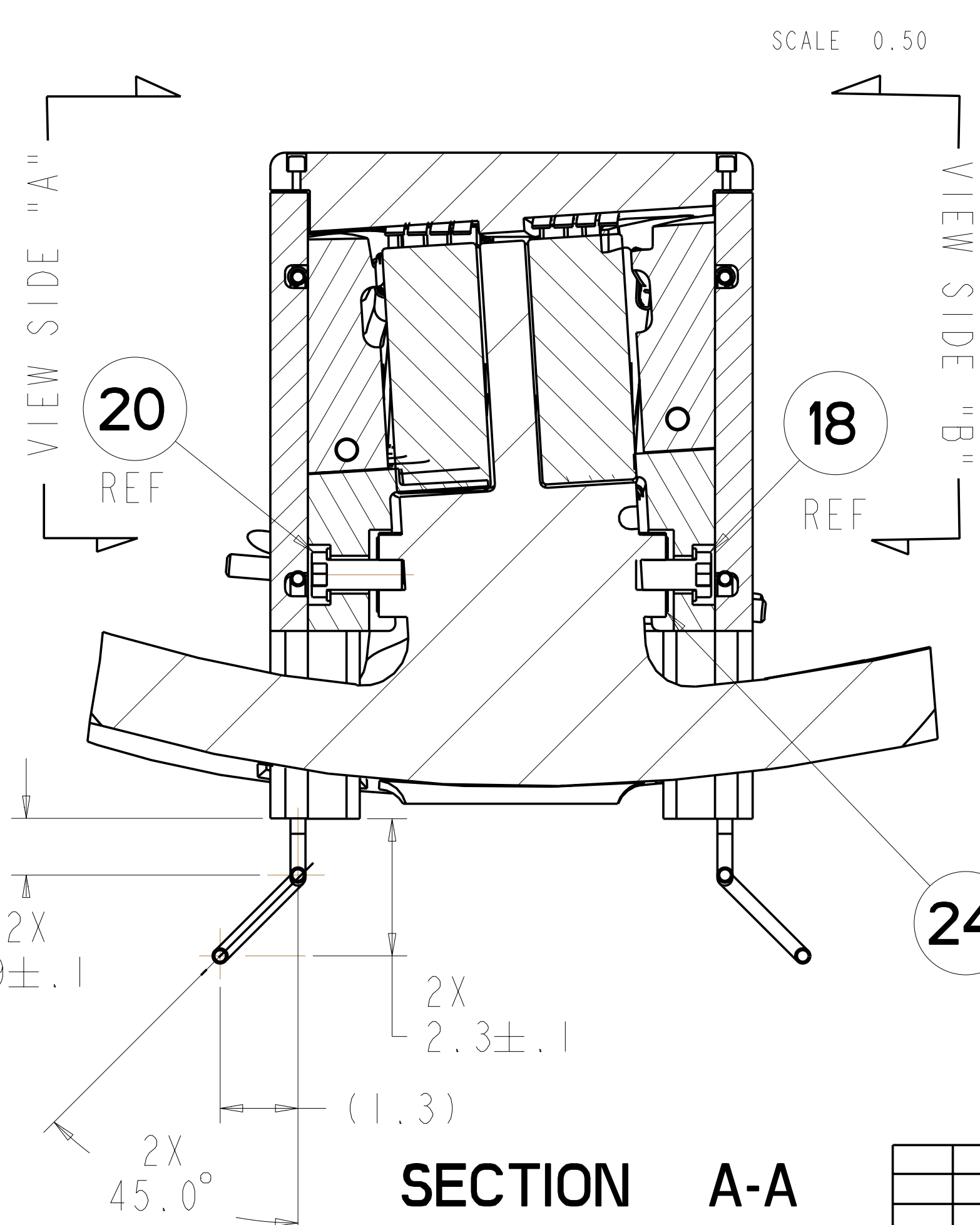
EXPLODED VIEW

10. MEASURE DISTANCE FROM LOWER BLOCK MOUNTING HOLES TO BASE OF TEE. GRIND BOLT LENGTH IF REQUIRED TO PREVENT BOLT FROM TOUCHING TEE. MINIMUM BOLT ENGAGEMENT SHALL BE .3125 IN.

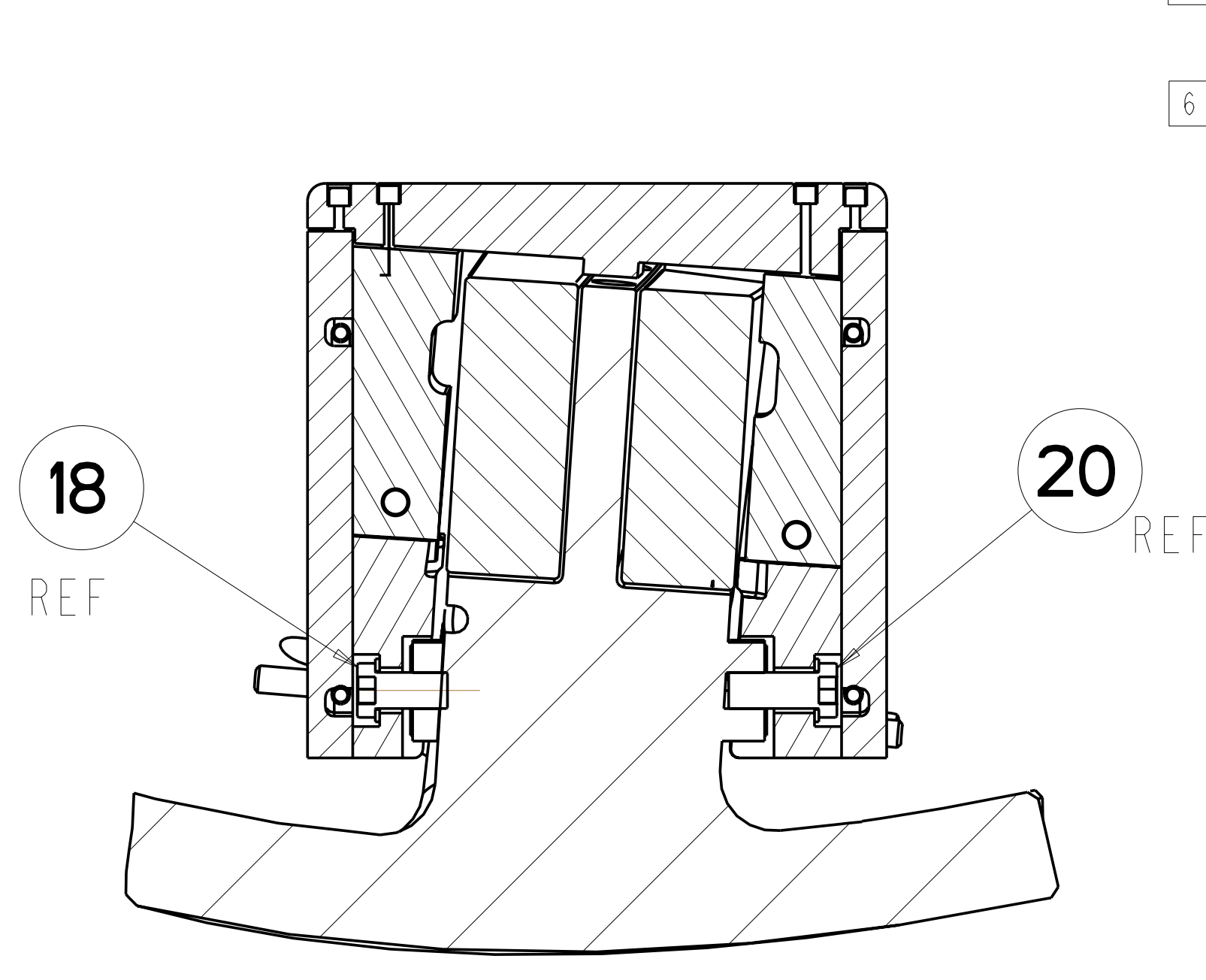
RELEASED FOR FABRICATION/INSTALLATION
 PPPL Drafting



SCALE 0.50



SECTION A-A



SECTION B-B

QTY	AR	PART OR IDENTIFYING NO	NOMENCLATURE OR DESCRIPTION	MATERIAL	SPECIFICATION	FIND NO
		-24	SHIM	UNS S31600		24
		SE142C-203	TYPE-C SPECIAL CHILL PLATES ASM			23
		-22	COOLING TUBE "B" 43.06 -0 +1.00 LG.	UNS C10100 OR C10200		22
		-21	COOLING TUBE "A" 41.56 -0 +1.00 LG.	UNS C10100 OR C10200		21
		-20	SCREW, 1/2-13 UNC X 1.25 LNG LOW HEAD SOC HD CAP	UNS S31600		20
		-19	WASHER .53 ID .875 OD .06 THK FLAT	UNS S31600		19
		-18	SCREW 1/2-13UNC X 1.00 LNG LOW HEAD SOC HD CAP	UNS S31600		18
		92185A626	SCREW 3/8-16 UNC X 1.25 SOC HD CAP	UNS S31600		17
		92185A544	SCREW 1/4-20 UNC X 1.25 LNG SOC HD CAP	UNS S31600		16
		92185A542	SCREW 1/4-20 UNC X 1.00 LNG SOC HD CAP	UNS S31600		15
		92185A540	SCREW 1/4-20 UNC X .75 LNG SOC HD CAP	UNS S31600		14
		92185A632	SCREW 3/8-16 UNC X 2 LNG SOC HD CAP	UNS S31600		13
		SE142C-285	TOP POSITIONING BUSHING			12
		SE142C-184	TYPE-C LEADS ENCLOSURE TOP PLATE			11
		SE142C-221	TYPE "C" SIDE "B" COVER PLATE			10
		SE142C-220	TYPE "C" SIDE "A" COVER PLATE			9
		SE142C-183	LEADS AREA CHILL PLATE			8
		SE142C-226	LEADS FILLER STRIPS			7
		SE142C-137	TYPE "C" SIDE "B" UPPER BLOCK			6
		SE142C-135	TYPE "C" SIDE "B" LOWER BLOCK			5
		SE142C-136	TYPE "C" SIDE "A" UPPER BLOCK			4
		SE142C-134	TYPE "C" SIDE "A" LOWER BLOCK			3
		SE141-123	MCWF TYPE "C" WELDMENT			2
		-1	LEADS BLOCK ASSEMBLY			1

SE142C-080 PARTS LIST

NO REPRESENTATION OR WARRANTY, EXPRESSED OR IMPLIED, IS MADE AS TO THE ACCURACY, COMPLETENESS OR USEFULNESS OF THE INFORMATION OR STATEMENTS CONTAINED IN THESE DRAWINGS, OR THAT THE USE OR DISCLOSURE OF ANY INFORMATION, APPARATUS, METHOD OR PROCESS DISCLOSED IN THESE DRAWINGS MAY NOT INFRINGE PRIVATE RIGHTS OF OTHERS. NO LIABILITY IS ASSUMED WITH RESPECT TO THE USE OF, OR FOR DAMAGES RESULTING FROM THE USE OF, ANY INFORMATION, APPARATUS, METHOD OR PROCESS DISCLOSED IN THESE DRAWINGS. DRAWINGS MADE AVAILABLE FOR INFORMATION TO BIDDER ARE NOT TO BE USED FOR OTHER PURPOSES, AND ARE TO BE RETURNED UPON REQUEST OF THE FORWARDING CONTRACTOR.

P THIS DRAWING PRODUCED ON PRO-ENGINEER

REV	DESCRIPTION	BY	DATE	CHK	DEPT	DATE	PE	REQ	DATE	ORNL	DOE	DATE

SCALE NOTED

DES: D WILLIAMSON	01/06
DRW: G LOVETT	01/06
CHK: M. J. COLE	01/06
SECT:	
DEPT:	
PE: D WILLIAMSON	01/06
CR:	
PJ:	
RD:	
PPPL DRFT: J SIEGEL	01/06

Oak Ridge National Laboratory managed for the DEPARTMENT OF ENERGY under U.S. GOVERNMENT CONTRACT DE-AC05-00OR22725 UT-BATTELLE, LLC, Oak Ridge, Tennessee

UT-BATTELLE

NATIONAL COMPACT STELLARATOR EXPERIMENT

LEADS WINDING BLOCKS ASSEMBLY

VERSION NO.	PLANT	BLDG	FL	SHT OF	TYPE	CLASS
21	X-10	5700	3	1	S	U

RELEASE LEVEL: Fabrication

SE142C-080

REV 0