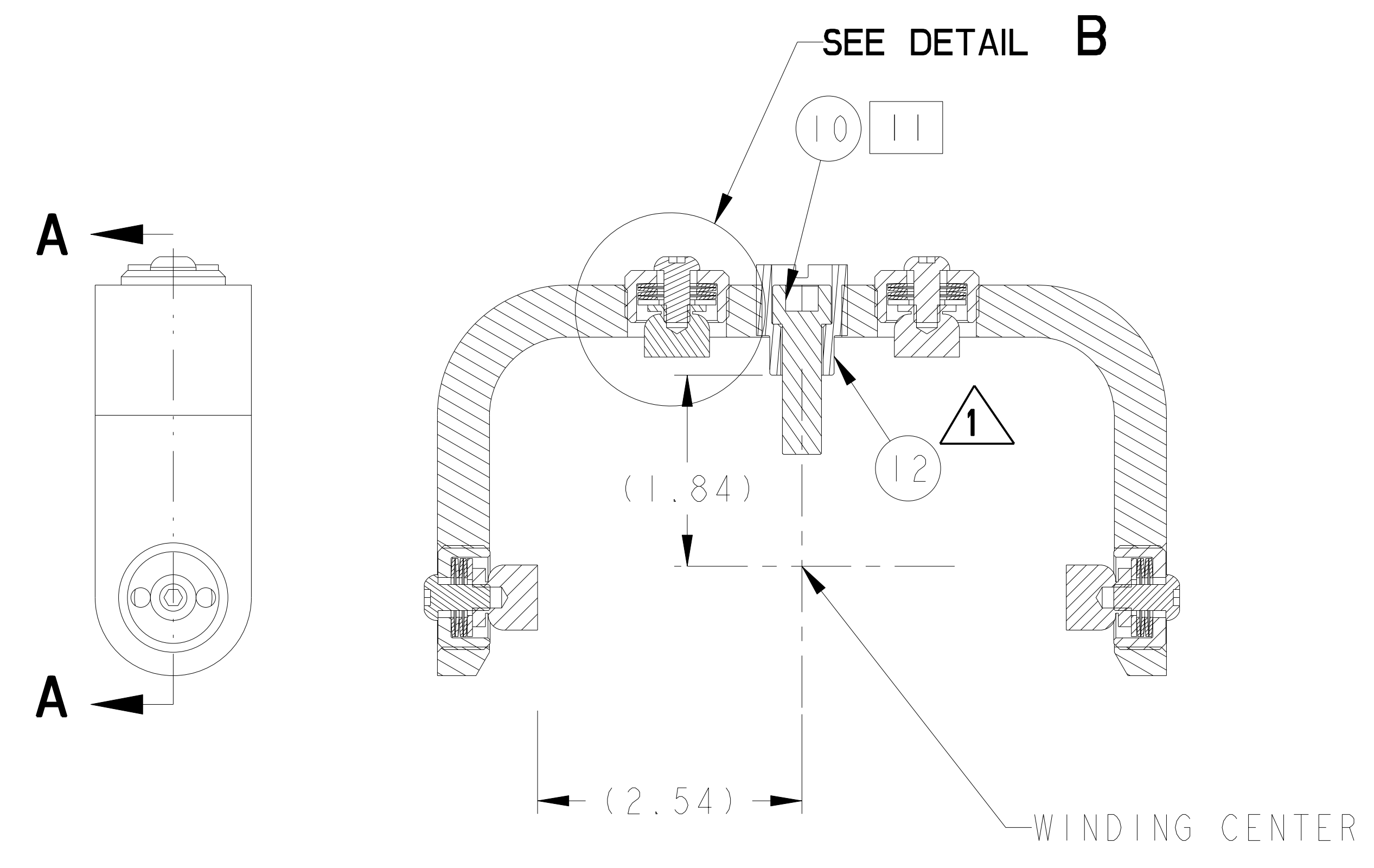
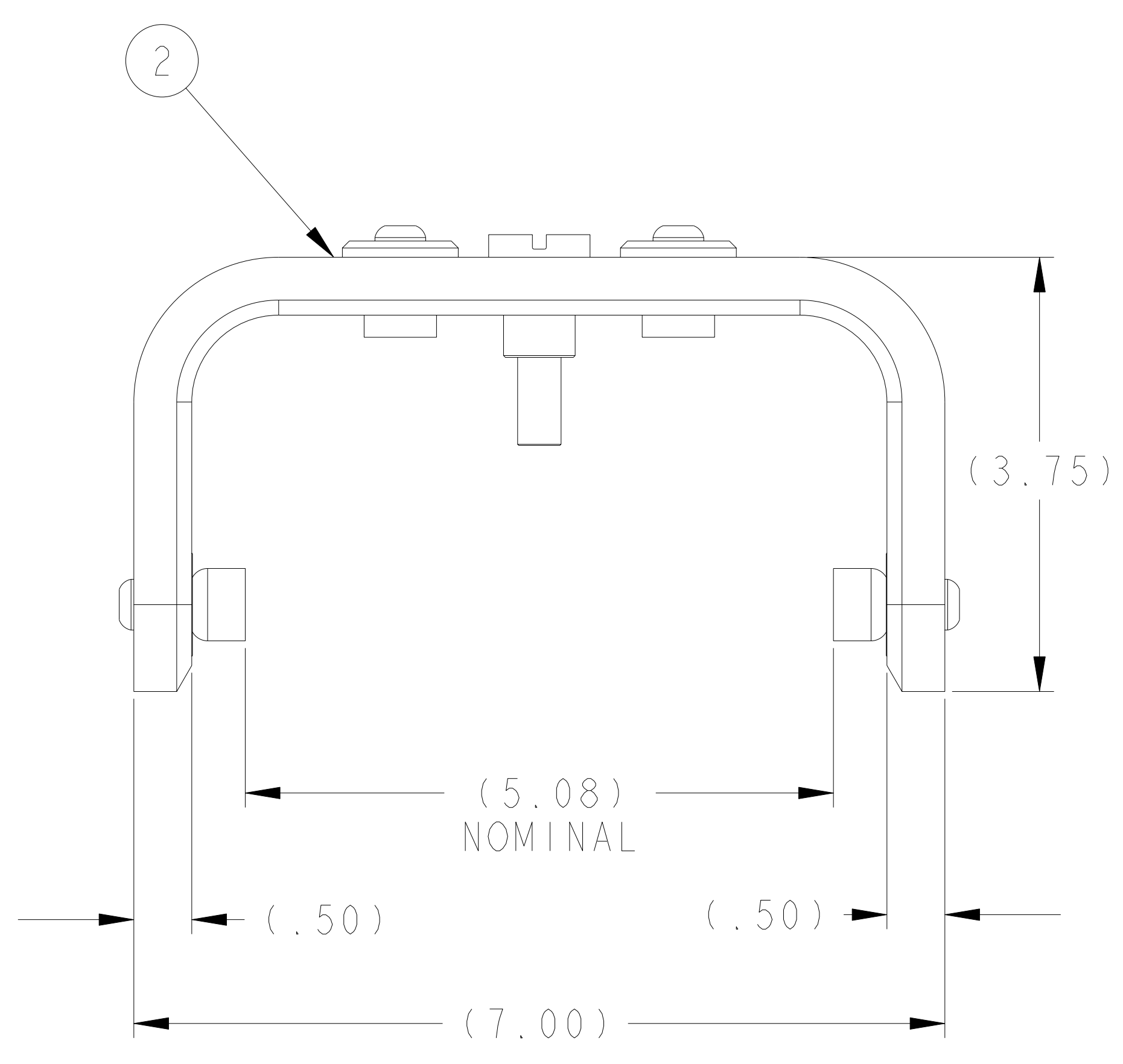
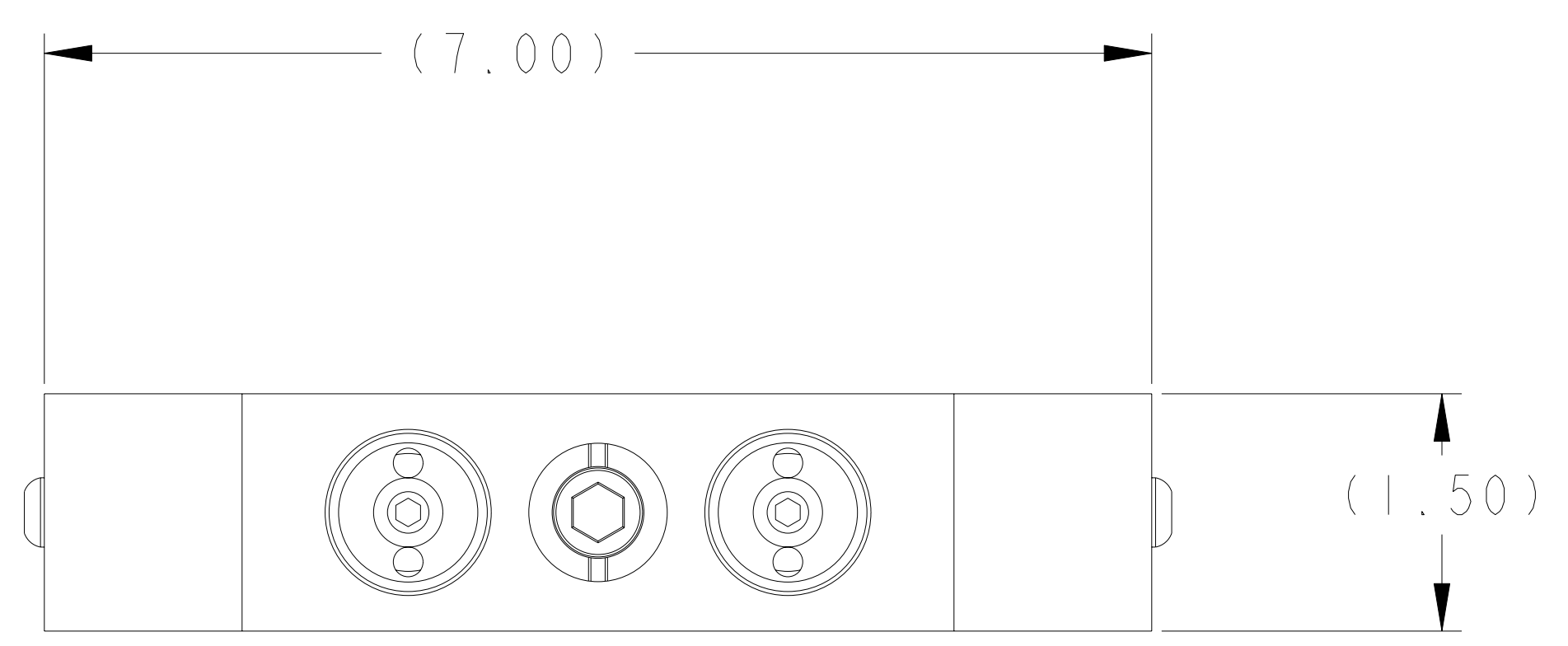
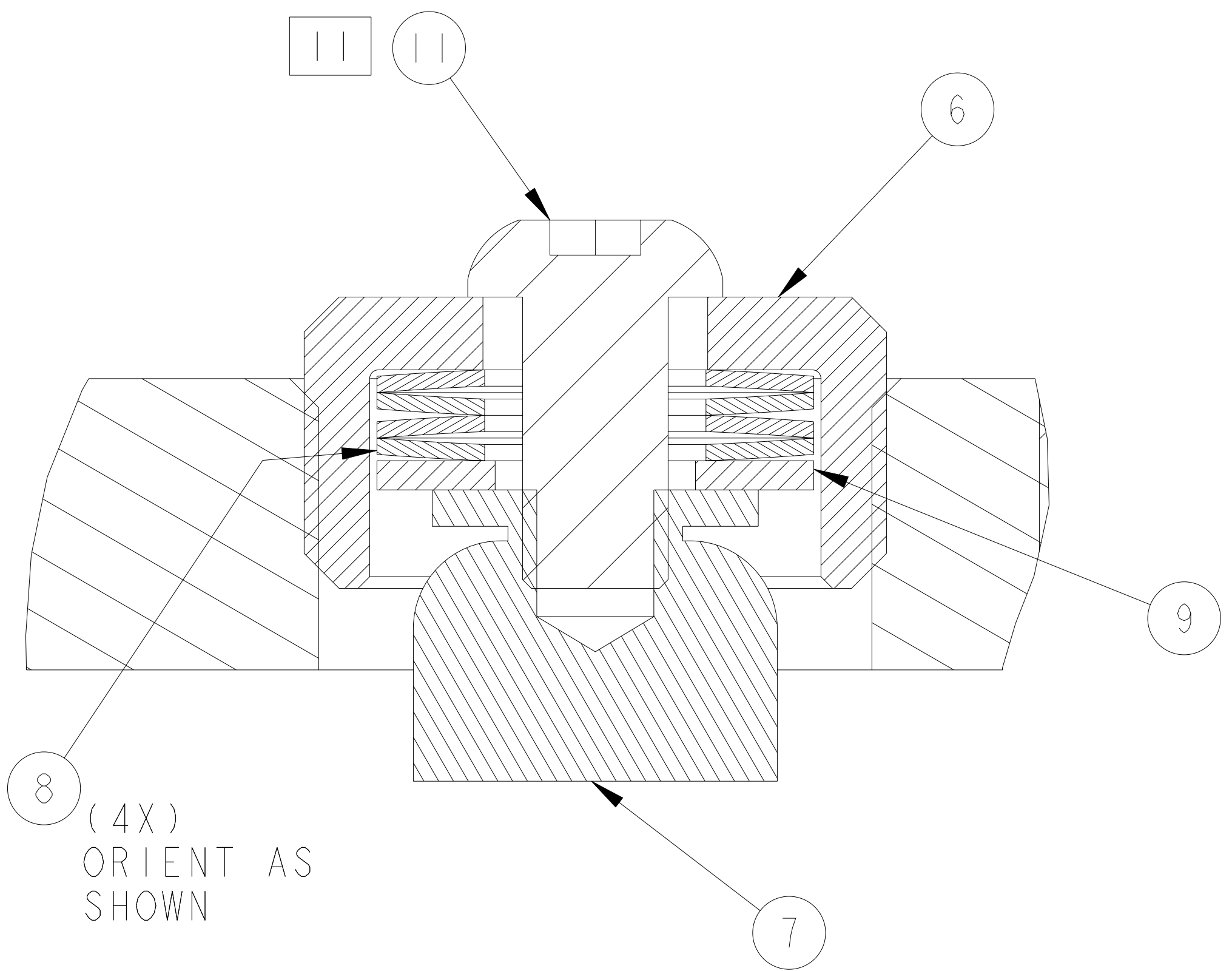


**1 CLAMP ASSEMBLY**  
SCALE 1.0



**SECTION A-A**



**1 DETAIL B**  
SCALE 5.0  
TYP 2 PLCS  
ROTATE 90° 2 PLCS

NOTES:

1. DRAWING PREPARED IN ACCORDANCE WITH ASME Y14.100-2000.
2. INTERPRET DIMENSIONS AND TOLERANCES PER ANSI Y14.5M-1994.
3. DIMENSIONS ARE IN INCHES
4. DIMENSIONS APPLY AT ROOM TEMPERATURE. OPERATING TEMP 80 K
5. GEOMETRY IS DEFINED IN PRO ENGINEER CAD MODELS/FILES
6. DRAWING AND MODELS COMBINED DEFINE FINISHED MACHINED PART
7. MAGNETIC PERMABILITY SHALL NOT EXCEED 1.02 AS TESTED BY A SEVERN-TYPE INDICATOR. AVAILABLE FROM

SEVERN ENGINEERING COMPANY  
555 OLD STAGE ROAD SUITE 14  
AUBURN, ALABAMA 36830

8. SOLON MANUFACTURING CO. CAGE CODE: 5L934  
7 ISLAND AVENUE PHONE: 207-474-6213  
SKOWHEGAN, ME 04976-1102 FAX: 207-474-7320
9. VLIER CAGE CODE: 01226  
40 GUEST ST. PHONE: 800-821-1090  
BRIGHTON, MA 02135 FAX: 800-457-2020
10. MCMASTER-CARR SUPPLY CAGE CODE: 39428  
600 COUNTY LINE RD PHONE: 630-833-0300  
ELMHURST, IL 60126-2081
11. SILVER PLATE PER AMS 2410J.  
PLATING THICKNESS .0002 TO .0005 INCH
12. ITEM 6 USES SPANNER WRENCH, 5981A1 FROM MCMASTER CARR OR EQUAL.
13. DELETED NOTE 13 AT REVISION 1.

REV	DESCRIPTION	BY	DATE	CHK	DEPT	DATE	PE	REQ	DATE	ORNL	DOE	DATE
1	REVISE PART AND DRAWING PER ECN 5220	GLL	11-08	MJC			DEW					
REV	REVISION OR ISSUE PURPOSE	BY	DATE	CHK	DEPT	DATE	PE	REQ	DATE	ORNL	DOE	DATE

REV	DESCRIPTION	MATERIAL	SPECIFICATION	FIND NO	
11	10	1	SEI142C-294	BUSHING, SPACER	12
11	10	4	98164A211	BUTTONHEAD CAP SCREW, 1/4-20 UNC X .50 LG, 5/32 HEX DRIVE	11
11	10	1	92185A626	SOCKET HD CAP SCREW, 3/8-16 UNC X 1.25 LG	10
10	4	1	90107A030	WASHER, FLAT, .75 OD X .344 ID X .050 THK	9
8	16	1	61240718	WASHER, BELLEVILLE, 3/8 ID X 3/4 OD X .040 THK X .056 FREE HT	8
9	4	1	SSP300	CLAMP SWIVEL, 1/4-20 UNC X 5/16 LG THD, PAD DIA 5/8, OA LENGTH 5/8	7
4	4	1	SEI142C-275	KEEPER, SCREW, SET	6
2	2	1	SEI142C-274	WASHER, SPHERICAL, CONCAVE	5
2	2	1	SEI142C-273	WASHER, SPHERICAL, CONVEX	4
0	0	1	SEI142C-272	BUSHING, SPACER	3
1	1	1	SEI142C-271	BAR, CLAMP	2
7	AR	X	1	CLAMP ASSEMBLY	1

**RELEASED FOR FABRICATION / INSTALLATION**  
PPPL Drafting:

NO REPRESENTATION OR WARRANTY, EXPRESSED OR IMPLIED, IS MADE AS TO THE ACCURACY, COMPLETENESS OR USEFULNESS OF THE INFORMATION OR STATEMENTS CONTAINED IN THESE DRAWINGS, OR THAT THE USE OR DISCLOSURE OF ANY INFORMATION, APPARATUS, METHOD OR PROCESS DISCLOSED IN THESE DRAWINGS MAY NOT INFRINGE PRIVATE RIGHTS OF OTHERS. NO LIABILITY IS ASSUMED WITH RESPECT TO THE USE OF, OR FOR DAMAGES RESULTING FROM THE USE OF, ANY INFORMATION, APPARATUS, METHOD OR PROCESS DISCLOSED IN THESE DRAWINGS. DRAWINGS MADE AVAILABLE FOR PURPOSES, AND ARE TO BE RETURNED UPON REQUEST OF THE FORWARDING CONTRACTOR.

**P** THIS DRAWING PRODUCED ON PRO-ENGINEER

SCALE NOTED	DES: D WILLIAMSON 1-27-05	Oak Ridge National Laboratory managed for the DEPARTMENT OF ENERGY under U.S. GOVERNMENT CONTRACT DE-AC05-00OR22725 UT-BATTELLE, LLC, Oak Ridge, Tennessee PROJECT NAME: NATIONAL COMPACT STELLARATOR EXPERIMENT
TOLERANCES UNLESS OTHERWISE SPECIFIED	DRW: GARY LOVETT 1-27-05	
FRACTIONS XX DECIMALS ±.01	CHK: TOM HARGROVE 8-26-05	
XXX DECIMALS ±.005	DES: D WILLIAMSON 8-26-05	
ANGLES ±0°15'	CR: :	<b>UT-BATTELLE</b> CLAMP ASSEMBLY
BREAK SHARP EDGES 04 MAX	PJ: :	
FINISH .125 UNLESS OTHERWISE SPECIFIED	RD: :	
PPPL DRFT J SIEGEL 8-26-05	VERSION NO. 10	PLANT BLDG FL SHT OF TYPE CLASS
DRAWING APPROVALS	RELEASE LEVEL	X-10 5700 3 1 1 S U
	Fabrication	SEI142C-270