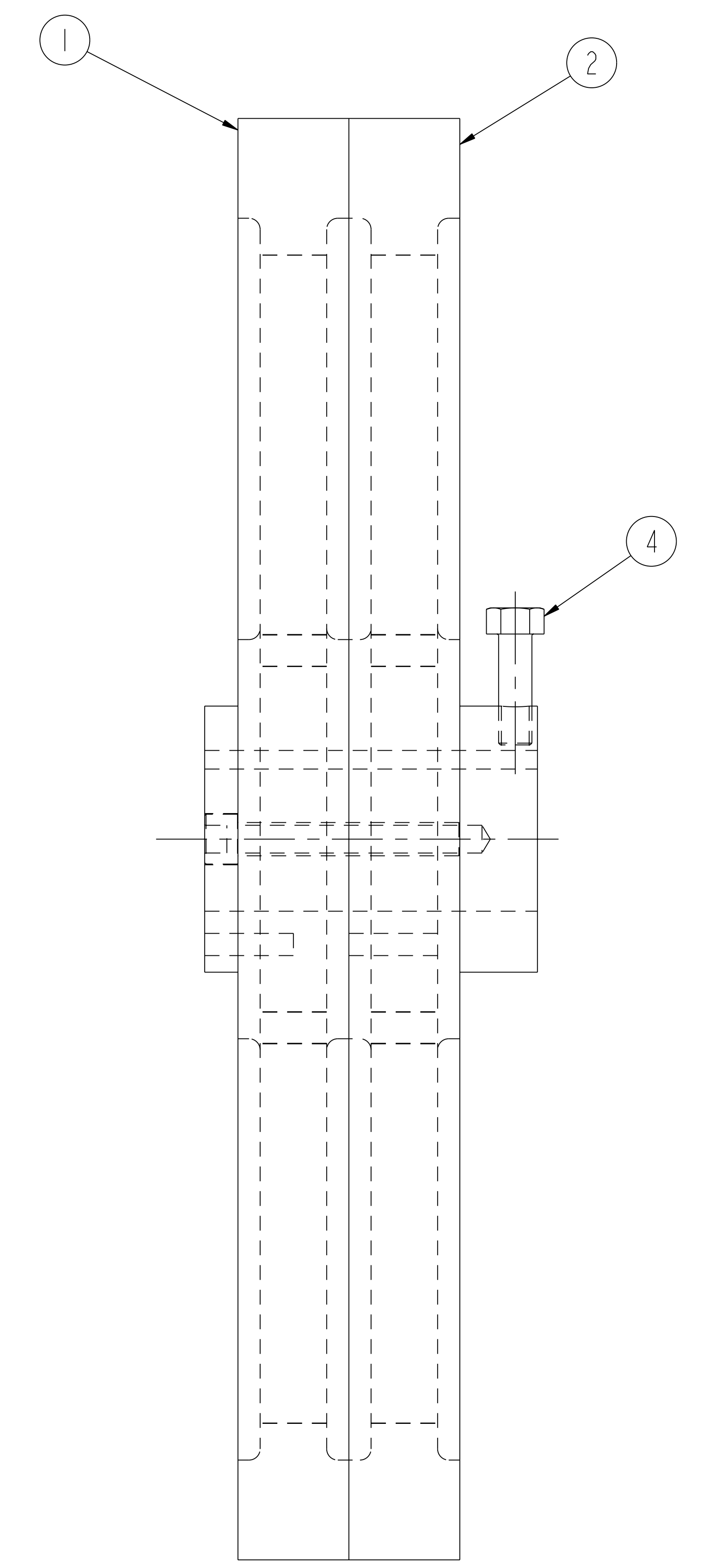
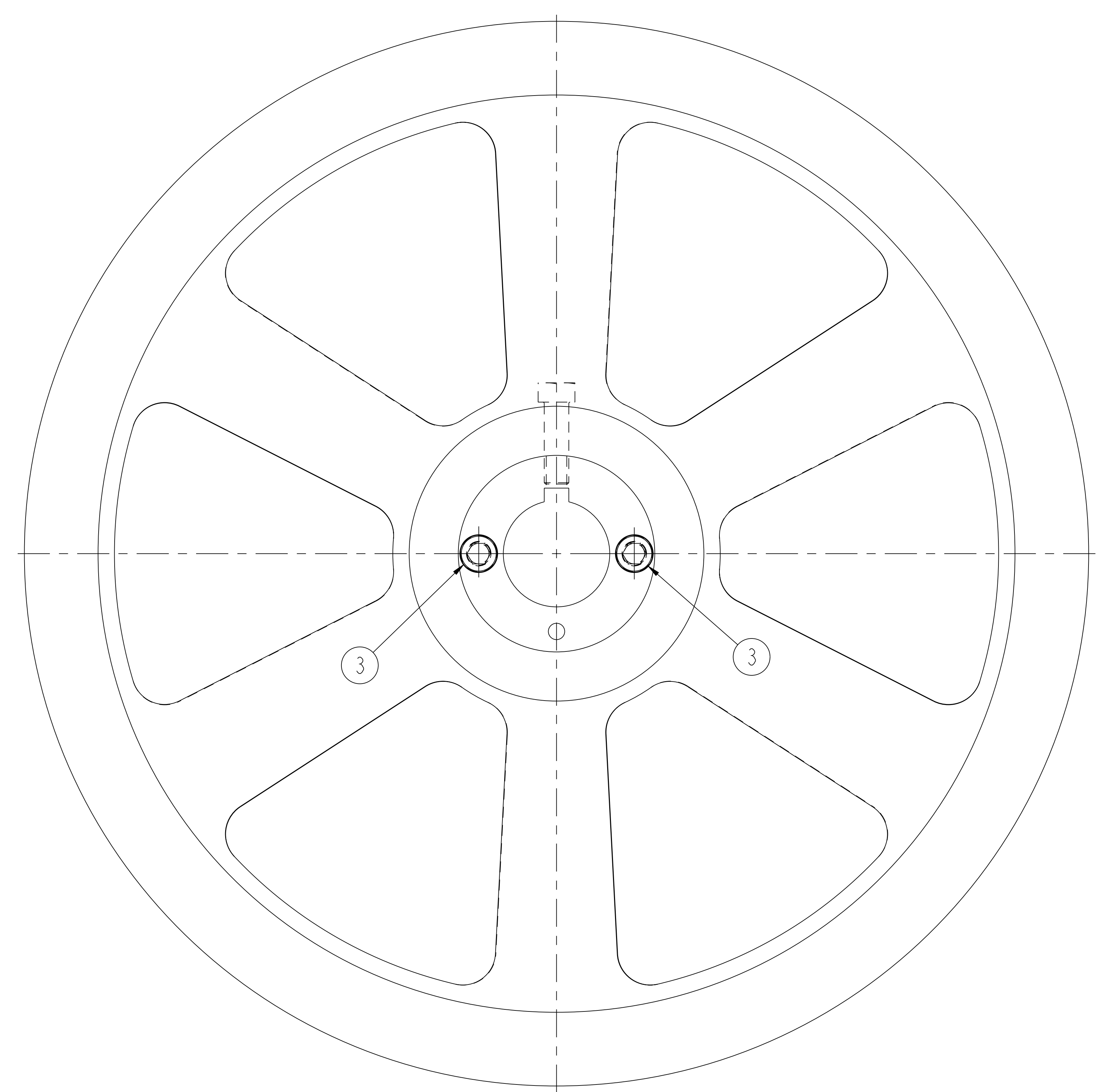


NO.	REVISION	BY	CH	SUP	APPROVED	DATE



**RELEASED FOR
FABRICATION / INSTALLATION**
PPPL Drafting:

1	4	COMM	3/8-16UNC-2A x 1 1/4 LG HEX HD CAP SCREW	C'STL - ZN PLT	
2	3	COMM	3/8-16UNC-2A x 2 1/2 LG HEX SOCKET CAP SCREW	C'STL - ZN PLT	
1	2	SE144-021-2	MODIFIED SPUR GEAR	SEE DWG	
1	1	SE144-021-1	MODIFIED SPUR GEAR	SEE DWG	
01	—	THIS DWG	MODIFIED SPUR GEARS ASSEMBLY	—	2
01	PART	DRAWING NO.	NOMENCLATURE	MATERIAL	QTY
ASSY	NO.		OR DESCRIPTION		REQD

COMPUTER GENERATED DRAWING MANUAL CHANGES NOT PERMITTED		CENTRAL FILES: UNLESS OTHERWISE SPECIFIED		PRINCETON PLASMA PHYSICS LABORATORY PRINCETON UNIVERSITY	
Pro E		DIMENSIONS ARE IN INCHES MACHINE SURFACES		NATIONAL COMPACT STELLARATOR EXPERIMENT	
DO NOT VERIFY INFORMATION BY SCALING DRAWING		BREAK SHARP EDGES .005/.020		MODULAR COIL ASSEMBLY WINDING SUPPORT FRAME MODIFIED SPUR GEARS ASSEMBLY	
WEIGHT 74.7 lbs		TOLERANCES NON-CUMULATIVE		DSN: L. MORRIS 11-15-05 DRAWING NO:	
MODEL NAME SE144-006-01		DECIMAL-INCH FRACTIONS		CHK: J. CHRZANOWSKI 11-15-05	
WELDING ENGINEER		NEXT ASSEMBLY		ENGR: J. CHRZANOWSKI 11-15-05	
RELEASE LEVEL: FABRICATION DWG VERSION NO: 3		.XX +/- .030 12°-12° +/- 1/8°		SUPV: J. SIEGEL 11-15-05	
		.XXX +/- .005 72°-120° +/- 1/4°		SHEET 1 OF 1	
		ANGULAR +/- 0°-15° OVER 120° +/- 1/2°		REV 0	

NCSX-SE144-006