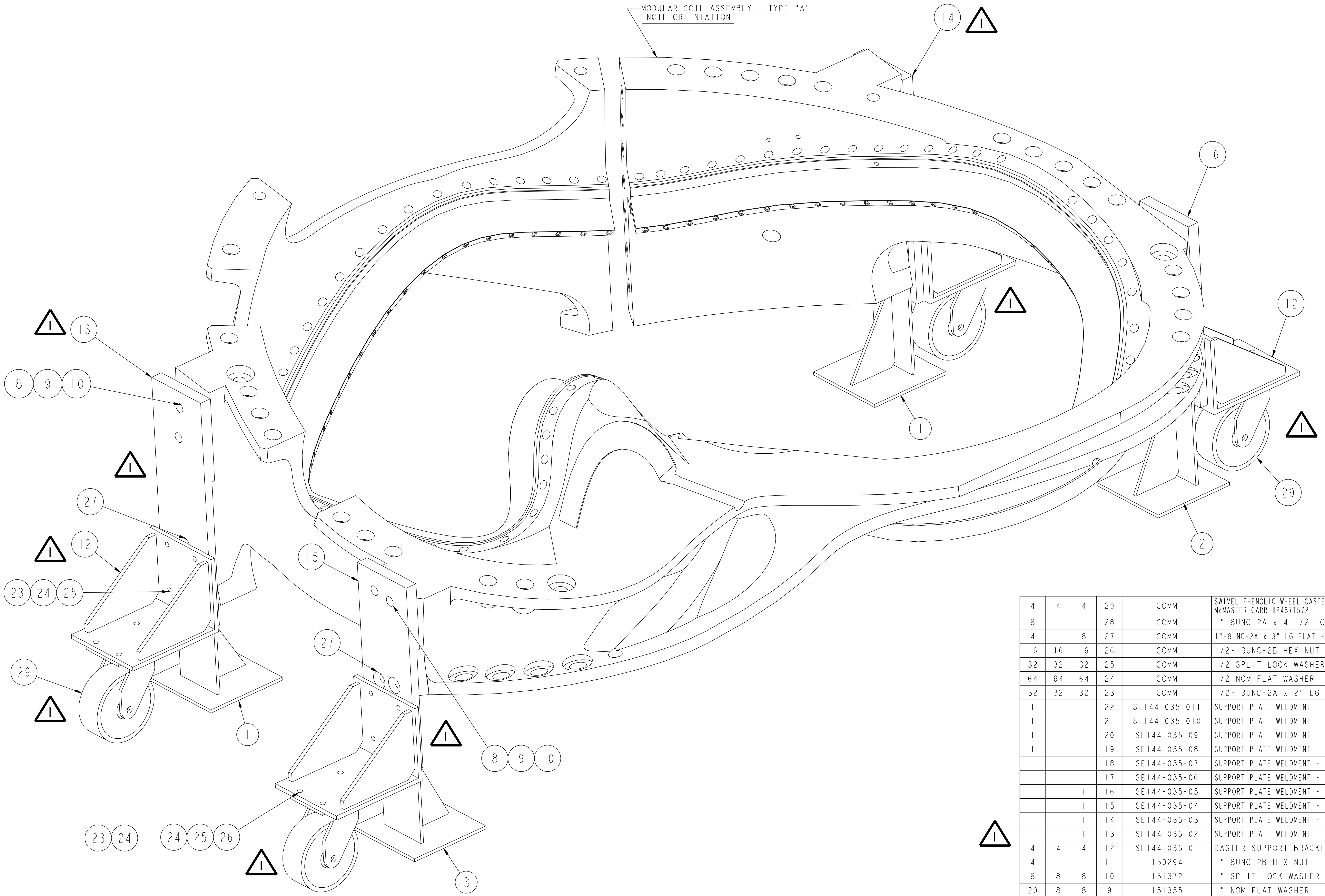


NO.	REVISION	BY	CH	SUP	APPROVED	DATE
1	REVISED PER ECN-5076	LM	SR	JS	G. GETTELFINGER	2-16-06



-01 ASSEMBLY MODULAR COIL ASSEMBLY - TYPE "A" WITH BRACKET SUPPORT STANDS

QTY	DESCRIPTION	PART NO.	DRAWING NO.	NOMENCLATURE OR DESCRIPTION	MATERIAL	QTY REQD
4	4	4	29	COMM SWIVEL PHENOLIC WHEEL CASTER - 8 x 3 W - 2500#		
			28	COMM 1"-8UNC-2A x 4 1/2 LG HEX HD CAP SCR	C'STL - ZN PLT	
			27	COMM 1"-8UNC-2A x 3" LG FLAT HD SOCKET CAP SCR	C'STL - ZN PLT	
16	16	16	26	COMM 1/2-13UNC-2B HEX NUT	C'STL - ZN PLT	
32	32	32	25	COMM 1/2 SPLIT LOCK WASHER	C'STL - ZN PLT	
64	64	64	24	COMM 1/2 NOM FLAT WASHER	C'STL - ZN PLT	
32	32	32	23	COMM 1/2-13UNC-2A x 2" LG HEX HD CAP SCR	C'STL - ZN PLT	
1		22	SE144-035-011	SUPPORT PLATE WELDMENT - TYPE "E" - OPPOSITE	SEE DWG	
1		21	SE144-035-010	SUPPORT PLATE WELDMENT - TYPE "E" - AS SHOWN	SEE DWG	
1		20	SE144-035-09	SUPPORT PLATE WELDMENT - TYPE "D" - OPPOSITE	SEE DWG	
1		19	SE144-035-08	SUPPORT PLATE WELDMENT - TYPE "D" - AS SHOWN	SEE DWG	
1		18	SE144-035-07	SUPPORT PLATE WELDMENT - TYPE "C" - OPPOSITE	SEE DWG	
1		17	SE144-035-06	SUPPORT PLATE WELDMENT - TYPE "C" - AS SHOWN	SEE DWG	
1		16	SE144-035-05	SUPPORT PLATE WELDMENT - TYPE "B" - OPPOSITE	SEE DWG	
1		15	SE144-035-04	SUPPORT PLATE WELDMENT - TYPE "B" - AS SHOWN	SEE DWG	
1		14	SE144-035-03	SUPPORT PLATE WELDMENT - TYPE "A" - OPPOSITE	SEE DWG	
1		13	SE144-035-02	SUPPORT PLATE WELDMENT - TYPE "A" - AS SHOWN	SEE DWG	
4	4	4	12	SE144-035-01	CASTER SUPPORT BRACKET WELDMENT	SEE DWG
4			11	150294	1" - 8UNC-2B HEX NUT	C'STL - ZN PLT
8	8	8	10	151372	1" SPLIT LOCK WASHER	C'STL - ZN PLT
20	8	8	9	151355	1" NOM FLAT WASHER	C'STL - ZN PLT
4		8	8	NS150164	1"-8UNC-2A x 3" LG H.H.C.S.	C'STL - ZN PLT
8		8	7	NS150169	1"-8UNC-2A x 2" LG HEX HD CAP SCREW	C'STL - ZN PLT
1			6	SE144-031-06	BRACKET SUPPORT STAND WELDMENT - TYPE "F"	SEE DWG
1			5	SE144-031-05	BRACKET SUPPORT STAND WELDMENT - TYPE "E"	SEE DWG
2			4	SE144-031-04	BRACKET SUPPORT STAND WELDMENT - TYPE "D"	SEE DWG
1	1	3	SE144-031-03	BRACKET SUPPORT STAND WELDMENT - TYPE "C"	SEE DWG	
1	1	2	SE144-031-02	BRACKET SUPPORT STAND WELDMENT - TYPE "B"	SEE DWG	
2	2	1	SE144-031-01	BRACKET SUPPORT STAND WELDMENT - TYPE "A"	SEE DWG	
				THIS DWG	MOD. COIL ASSEMBLY - TYPE "C" WITH BRACKET SUPPORT STANDS	
				THIS DWG	MOD. COIL ASSEMBLY - TYPE "B" WITH BRACKET SUPPORT STANDS	
				THIS DWG	MOD. COIL ASSEMBLY - TYPE "A" WITH BRACKET SUPPORT STANDS	

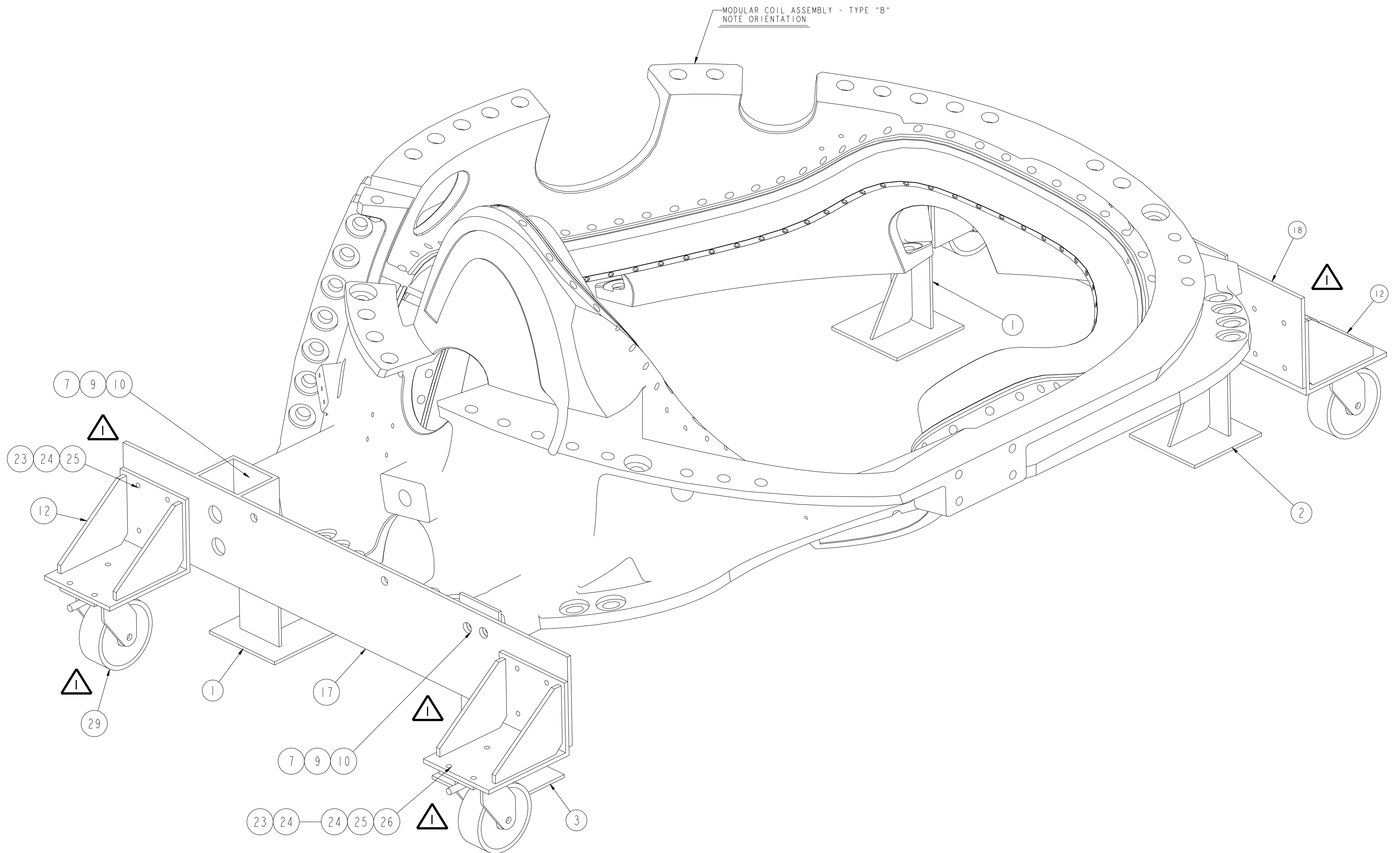
**RELEASED FOR
FABRICATION / INSTALLATION**
 PPPL Drafting:

RELEASE LEVEL: FABRICATION
 DWG VERSION NO: 1

WEIGHT	MODEL NAME	WELDING ENGINEER	COMPUTER GENERATED DRAWING	CENTRAL FILES	PRINCETON PLASMA PHYSICS LABORATORY
5372.0 lbs	SE144-030-01		Pro E	UNLESS OTHERWISE SPECIFIED	NATIONAL COMPACT STELLARATOR EXPERIMENT
			DO NOT VERIFY INFORMATION BY SCALING DRAWING	DIMENSIONS ARE IN INCHES MACHINE SURFACES	MODULAR COIL ASSEMBLY MODULAR COIL WINDING FORM TEST ASSEMBLY MODULAR COIL WINDING FORMS WITH BRACKET SUPPORT STANDS
				TOLERANCES NON-CUMULATIVE	DSN: L. MORRIS 10-19-04
				DECIMAL - INCH FRACTIONS	CHK: S. RAFTOPOULOS 10-19-04
				.XX +/- .030	ENGR: G. GETTELFINGER 10-19-04
				.XXX +/- .005	SUPV: J. SIEGEL 10-19-04
				ANGULAR +/- .015	DRAWING NO: SE144-030
					SHEET 1 OF 3 REV 1

NCSX-SE144-030

NO.	REVISION	BY	CH	SUP	APPROVED	DATE



-02 ASSEMBLY MODULAR COIL ASSEMBLY - TYPE "B" WITH BRACKET SUPPORT STANDS

**RELEASED FOR
FABRICATION / INSTALLATION**
PPPL Drafting:

FOR BILL OF MATERIAL SEE SHEET 1

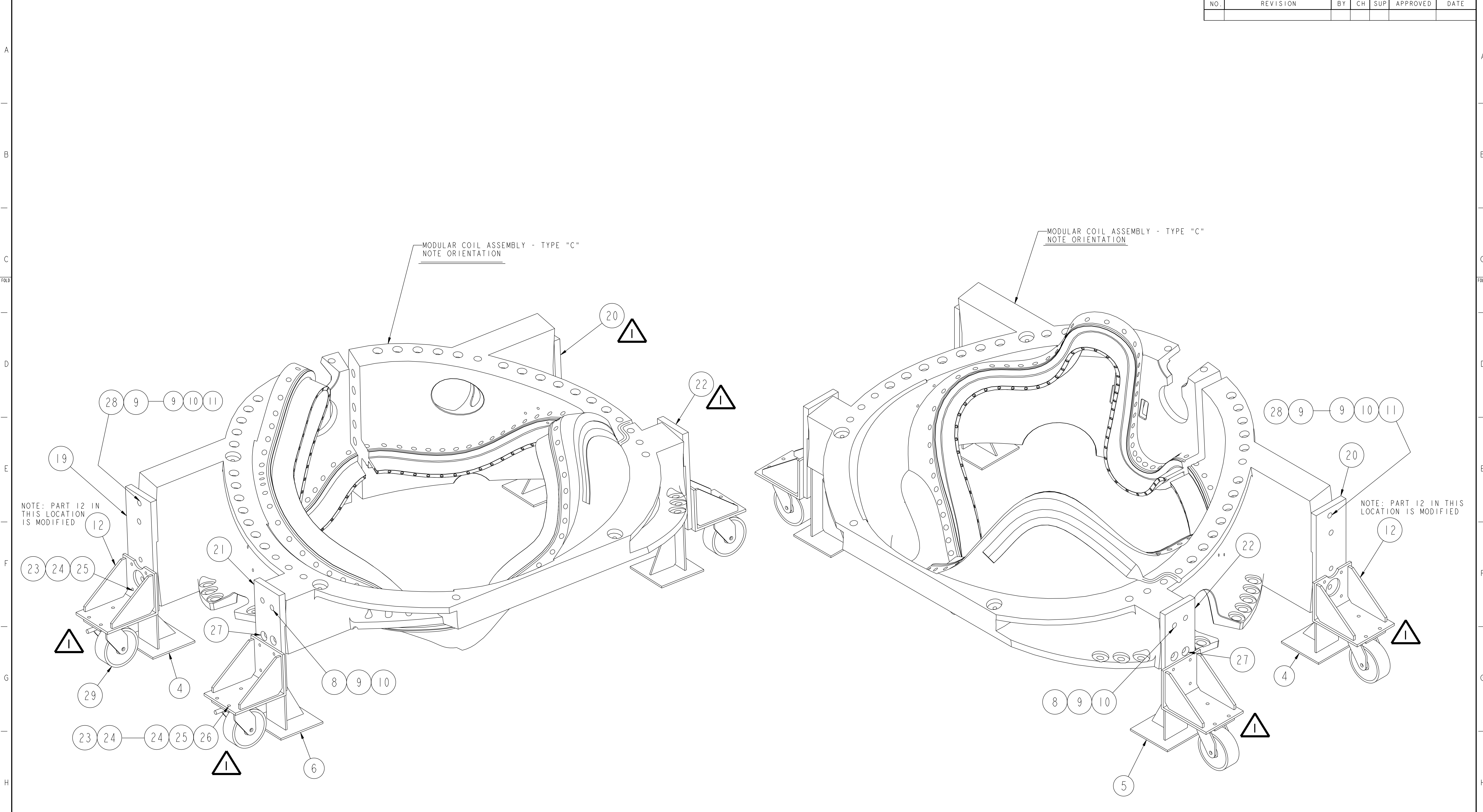
RELEASE LEVEL: Fabrication
DWG VERSION NO: 1

WEIGHT	5372.0 lbs
MODEL NAME	SE144-030-01
WELDING ENGINEER	

COMPUTER GENERATED DRAWING MANUAL CHANGES NOT PERMITTED Pro E	CENTRAL FILES: UNLESS OTHERWISE SPECIFIED	PRINCETON PLASMA PHYSICS LABORATORY PRINCETON UNIVERSITY	
DO NOT VERIFY INFORMATION BY SCALING DRAWING	DIMENSIONS ARE IN INCHES MACHINE SURFACES BREAK SHARP EDGES .005/.020	NATIONAL COMPACT STELLATOR EXPERIMENT	
NEXT ASSEMBLY	TOLERANCES NON-CUMULATIVE DECIMAL-INCH FRACTIONS .XX +/- .000 0°-12° +/- .010 .XXX +/- .005 12°-120° +/- .010 ANGULAR +/- 0°-15° OVER 120° +/- .112	MODULAR COIL ASSEMBLY MODULAR COIL WINDING FORM TEST ASSEMBLY MODULAR COIL WINDING FORMS WITH BRACKET SUPPORT STANDS	DSN: L. MORRIS 10-19-04 CHK: S. RAFTOPOULOS 10-19-04 ENGR: G. GETTELFINGER 10-19-04 SUPV: J. SIEGEL 10-19-04
		DRAWING NO: SE144-030	SHEET 2 OF 3 REV 1

NCSX-SE144-030

NO.	REVISION	BY	CH	SUP	APPROVED	DATE



-03 ASSEMBLY MODULAR COIL ASSEMBLY - TYPE "C" WITH BRACKET SUPPORT STANDS

**RELEASED FOR
FABRICATION / INSTALLATION**
PPPL Drafting:

FOR BILL OF MATERIAL SEE SHEET 1

RELEASE LEVEL: Fabrication
DWG VERSION NO: 1

COMPUTER GENERATED DRAWING MANUAL CHANGES NOT PERMITTED Pro E	CENTRAL FILES:	PRINCETON PLASMA PHYSICS LABORATORY PRINCETON UNIVERSITY			
	UNLESS OTHERWISE SPECIFIED	NATIONAL COMPACT STELLATOR EXPERIMENT			
DO NOT VERIFY INFORMATION BY SCALING DRAWING	DIMENSIONS ARE IN INCHES MACHINE SURFACES	MODULAR COIL ASSEMBLY MODULAR COIL WINDING FORM TEST ASSEMBLY MODULAR COIL WINDING FORMS WITH BRACKET SUPPORT STANDS			
NEXT ASSEMBLY	TOLERANCES NON-CUMULATIVE	DSN: L. MORRIS	10-19-04	DRAWING NO:	
	DECIMAL-INCH FRACTIONS	CHK: S. RAFTOPOULOS	10-19-04	SE144-030	
WELDING ENGINEER	.XX +/- .030 .XXX +/- .005 ANGULAR +/- 0°-15'	ENGR: G. GETTELFINGER	10-19-04	SHEET 3 OF 3	REV I
WEIGHT	34481.8 lbs	SUPV: J. SIEGEL	10-19-04	NCSX-ASSY-FORMAT.E	
MODEL NAME	SE144-030-02				

NCSX-SE144-030