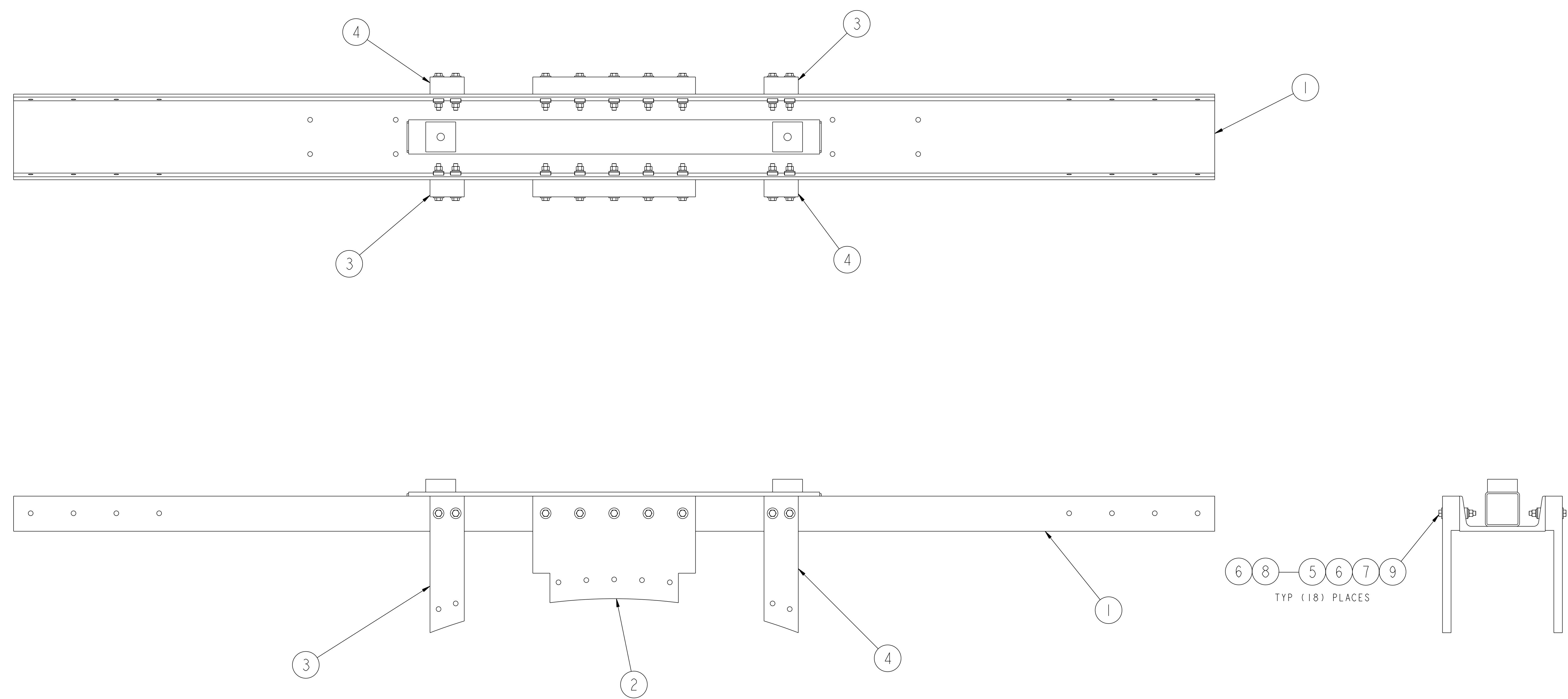


NO.	REVISION	BY	CH	SUP	APPROVED	DATE



**RELEASED FOR
FABRICATION / INSTALLATION**
PPPL Drafting:

18	9	COMM	1/2-13 UNC-2B HEX NUT	316 S/S	108
18	8	COMM	1/2-13 UNC-2A x 4" LG HEX HEAD BOLT - HIGH STRENGTH	316 S/S	108
18	7	151367	1/2 SPLIT LOCK WASHER	C'STL - ZN PLT	108
36	6	151351	1/2 FLAT WASHER	C'STL - ZN PLT	216
18	5	NS151360	SQUARE BEVEL WASHER	MALL. IRON	108
2	4	THIS DWG	HEADER TO RING R.H. OUTBOARD SUPPORT PLATE WELDMNT	ASTM A36	12
2	3	THIS DWG	HEADER TO RING L.H. OUTBOARD SUPPORT PLATE WELDMNT	ASTM A36	12
2	2	THIS DWG	HEADER TO RING MAIN SUPPORT PLATE WELDMNT	ASTM A36	12
1	1	SE144-014-01	HEADER WELDMNT	SEE DWG	6
01	ASSY	THIS DWG	WINDING FRAME HEADER ASSEMBLY	---	6
01	PART NO.	DRAWING NO.	NOMENCLATURE OR DESCRIPTION	MATERIAL	QTY REQD

PARTS LIST

COMPUTER GENERATED DRAWING CHANGES NOT PERMITTED Pro E	CENTRAL FILES:	PRINCETON PLASMA PHYSICS LABORATORY PRINCETON UNIVERSITY			
	UNLESS OTHERWISE SPECIFIED	NATIONAL COMPACT STELLARATOR EXPERIMENT			
DO NOT VERIFY INFORMATION BY SCALING DRAWING	DIMENSIONS ARE IN INCHES MACHINE SURFACES BREAK SHARP EDGES .005/.020	MODULAR COIL ASSEMBLY WINDING RING ASSEMBLY WINDING FRAME HEADER ASSEMBLY			
WEIGHT 702.0 lbs	TOLERANCES NON-CUMULATIVE	DSN: L. MORRIS	9-24-04	DRAWING NO:	
MODEL NAME SE144-049	DECIMAL-INCH FRACTIONS	CHK: S. RAFTOPOULOS	9-24-04	SE144-049	
RELEASE LEVEL: DWG VERSION NO:	NEXT ASSEMBLY	ENGR: J. CHRZANOWSKI	9-24-04	SHEET 1 OF 1	
	WELDING ENGINEER	SUPV: J. SIEGEL	9-24-04	REV 0	

NCSX-SE144-049