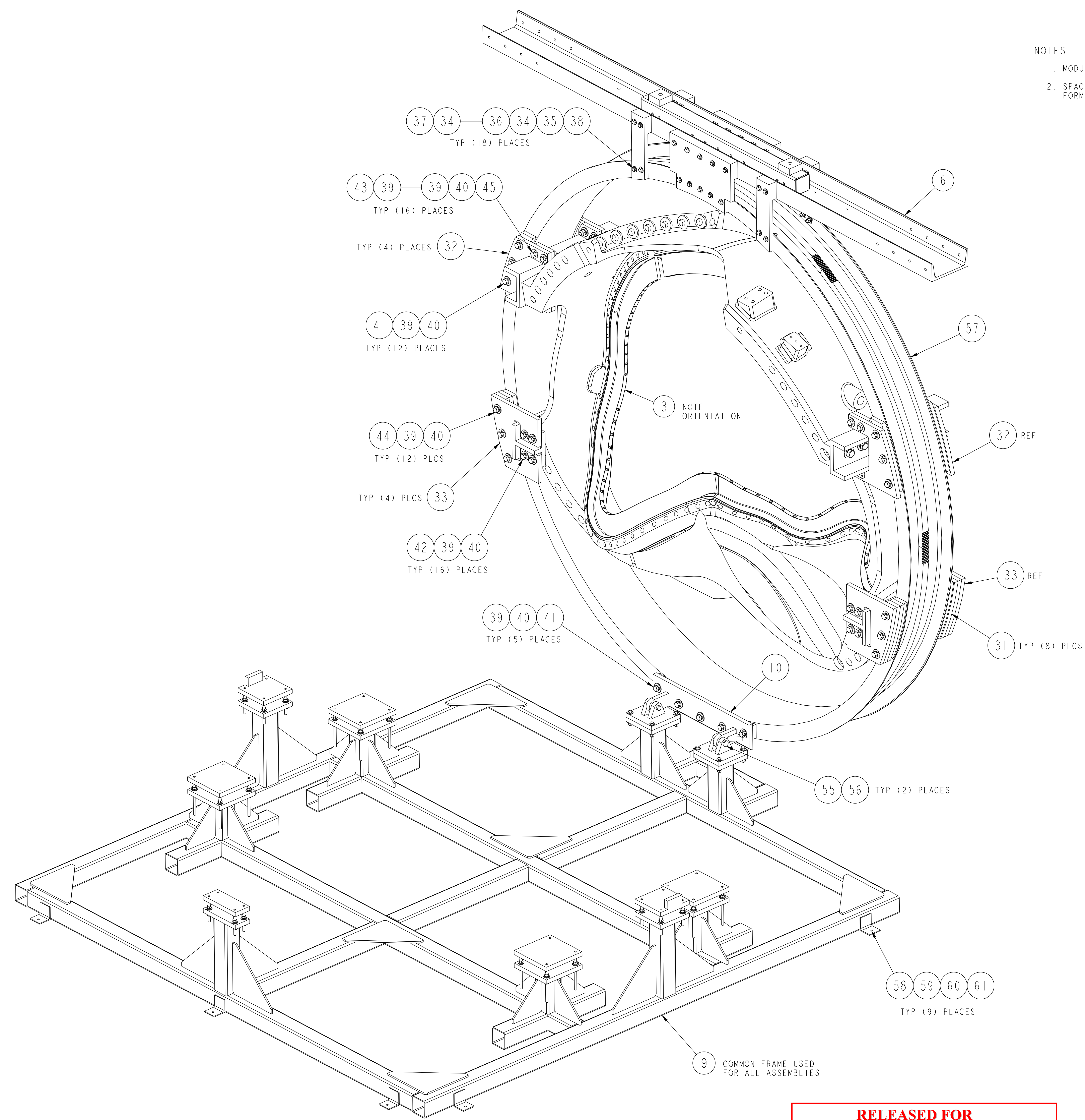


NO.	REVISION	BY	CH	SUP	APPROVED	DATE

NOTES

1. MODULAR COIL ASSEMBLIES ARE SHOWN IN UPRIGHT POSITION FOR CLARITY PURPOSES.
2. SPACERS, PARTS 7 AND 8, ARE TO BE POSITIONED ACCORDINGLY AS MODULAR COIL WINDING FORM - TYPE "B" IS LOWERED ONTO FIXTURE FRAME.



QTY	UNIT	QTY	UNIT	PART NO.	DRAWING NO.	NOMENCLATURE OR DESCRIPTION	MATERIAL	QTY RECD
8	---	63	---	150294	---	1"-8UNC-2B HEX NUT	C'STL - 2N PLT	---
8	---	62	---	NS150168	---	1"-8UNC-2A x 4" LG H.H.C.S.	C'STL - 2N PLT	---
---	---	9	---	150287	---	3/8-16UNC-2B HEX NUT	C'STL - 2N PLT	---
---	---	9	---	151365	---	3/8 SPLIT LOCK WASHER	C'STL - 2N PLT	---
---	---	9	---	151349	---	3/8 FLAT WASHER	C'STL - 2N PLT	---
---	---	9	---	58	---	COMM FLOOR ANCHOR - 3/8-16 x 3" LG	C'STL	---
1	1	57	---	SE144-020-01	---	SUPPORT RING WELDMENT	SEE DWG	---
2	2	56	---	COMM	---	COTTER PIN - Ø3/16 x 1 1/2 LG	C'STL - 2N PLT	---
2	2	55	---	COMM	---	CLEVIS PIN - Ø1" x 3 1/2 LG	1018 C'STL	---
---	5	54	---	NS150310	---	1 3/8-6UNC-2B HEX NUT	C'STL - 2N PLT	---
---	5	53	---	NS150167	---	1 3/8-6UNC-2A x 4 1/2 LG H.H.C.S.	C'STL - 2N PLT	---
---	3	52	---	NS150166	---	1 3/8-6UNC-2A x 3" LG H.H.C.S.	C'STL - 2N PLT	---
---	8	51	---	NS151374	---	1 3/8 SPLIT LOCK WASHER	C'STL - 2N PLT	---
---	13	50	---	NS151373	---	1 3/8 FLAT WASHER	C'STL - 2N PLT	---
8	---	49	---	NS150164	---	1"-8UNC-2A x 3" LG H.H.C.S.	C'STL - 2N PLT	---
---	8	48	---	NS150165	---	1"-8UNC-2A x 2 1/2 LG H.H.C.S.	C'STL - 2N PLT	---
16	8	47	---	151372	---	1" SPLIT LOCK WASHER	C'STL - 2N PLT	---
24	8	46	---	151355	---	1" FLAT WASHER	C'STL - 2N PLT	---
32	40	45	---	150292	---	3/4-10UNC-2B HEX NUT	C'STL - 2N PLT	---
---	12	44	---	150157	---	3/4-10UNC-2A x 4" LG H.H.C.S.	C'STL - 2N PLT	---
32	40	43	---	NS150163	---	3/4-10UNC-2A x 3 1/2 LG H.H.C.S.	C'STL - 2N PLT	---
---	16	42	---	150155	---	3/4-10UNC-2A x 2 1/2 LG H.H.C.S.	C'STL - 2N PLT	---
29	17	41	---	150154	---	3/4-10UNC-2A x 2" LG H.H.C.S.	C'STL - 2N PLT	---
61	85	61	---	151370	---	3/4 SPLIT LOCK WASHER	C'STL - 2N PLT	---
93	125	77	---	151353	---	3/4 FLAT WASHER	C'STL - 2N PLT	---
18	18	38	---	150262	---	1/2-13UNC-2B HEX NUT	316 S/S	---
18	18	37	---	COMM	---	1/2-13UNC-2A x 3" LG H.H.C.S. (HIGH STRENGTH)	316 S/S	---
18	18	36	---	NS151360	---	1/2 SQUARE BEVEL WASHER	MALL. IRON	---
18	18	35	---	151367	---	1/2 SPLIT LOCK WASHER	C'STL - 2N PLT	---
36	36	34	---	151351	---	1/2 FLAT WASHER	C'STL - 2N PLT	---
---	---	4	33	SE144-063-2	---	SUPPORT PLATE - TYPE "H" (TYPE "A" MCWF)	SEE DWG	---
---	---	4	32	SE144-063-1	---	SUPPORT PLATE - TYPE "G" (TYPE "A" MCWF)	SEE DWG	---
---	8	8	31	SE144-062-5	---	SPACER PLATE	SEE DWG	---
---	1	---	30	SE144-062-4	---	SUPPORT PLATE - TYPE "K" (TYPE "B" MCWF)	SEE DWG	---
---	1	---	29	SE144-062-3	---	SUPPORT PLATE - TYPE "J" (TYPE "B" MCWF)	SEE DWG	---
---	2	---	28	SE144-062-2	---	SUPPORT PLATE - TYPE "F" (TYPE "B" MCWF)	SEE DWG	---
---	4	---	27	SE144-062-1	---	SUPPORT PLATE - TYPE "E" (TYPE "B" MCWF)	SEE DWG	---
4	---	---	26	SE144-061-2	---	SUPPORT PLATE - TYPE "D" (TYPE "C" MCWF)	SEE DWG	---
4	---	---	25	SE144-061-1	---	SUPPORT PLATE - TYPE "C" (TYPE "C" MCWF)	SEE DWG	---
2	---	---	24	SE144-057-02	---	INNER SUPPORT BRACKET WELDMENT (TYPE "C" MCWF)	SEE DWG	---
2	---	---	23	SE144-057-01	---	OUTER SUPPORT BRACKET WELDMENT (TYPE "C" MCWF)	SEE DWG	---
---	1	---	22	SE144-056-010	---	SUPPORT BRACKET WELDMENT - TYPE "K" (TYPE "B" MCWF)	SEE DWG	---
---	1	---	21	SE144-056-09	---	SUPPORT BRACKET WELDMENT - TYPE "J" (TYPE "B" MCWF)	SEE DWG	---
---	1	---	20	SE144-056-08	---	SUPPORT BRACKET WELDMENT - TYPE "H" (TYPE "B" MCWF)	SEE DWG	---
---	1	---	19	SE144-056-07	---	SUPPORT BRACKET WELDMENT - TYPE "G" (TYPE "B" MCWF)	SEE DWG	---
---	1	---	18	SE144-056-06	---	SUPPORT BRACKET WELDMENT - TYPE "F" (TYPE "B" MCWF)	SEE DWG	---
---	1	---	17	SE144-056-05	---	SUPPORT BRACKET WELDMENT - TYPE "E" (TYPE "B" MCWF)	SEE DWG	---
---	1	---	16	SE144-056-04	---	SUPPORT BRACKET WELDMENT - TYPE "D" (TYPE "B" MCWF)	SEE DWG	---
---	1	---	15	SE144-056-03	---	SUPPORT BRACKET WELDMENT - TYPE "C" (TYPE "B" MCWF)	SEE DWG	---
---	1	---	14	SE144-056-02	---	SUPPORT BRACKET WELDMENT - TYPE "B" (TYPE "B" MCWF)	SEE DWG	---
---	1	---	13	SE144-056-01	---	SUPPORT BRACKET WELDMENT - TYPE "A" (TYPE "B" MCWF)	SEE DWG	---
---	2	12	---	SE144-055-02	---	INNER SUPPORT BRACKET WELDMENT (TYPE "A" MCWF)	SEE DWG	---
---	2	11	---	SE144-055-01	---	OUTER SUPPORT BRACKET WELDMENT (TYPE "A" MCWF)	SEE DWG	---
1	1	1	10	SE144-053-01	---	SUPPORT RING CLEVIS MOUNTING PLATE WELDMENT	SEE DWG	---
---	---	1	9	SE144-052-01	---	FIXTURE FRAME ASSEMBLY	SEE DWG	---
---	2	---	8	SE144-051-06	---	"T" TYPE SPACER	SEE DWG	---
---	2	---	7	SE144-051-05	---	"C" TYPE SPACER	SEE DWG	---
1	1	1	6	SE144-049-01	---	WINDING FRAME HEADER ASSEMBLY	SEE DWG	---
1	---	---	5	SE141-116	---	MODULAR COIL WINDING FORM - TYPE "C"	SEE DWG 6	---
---	1	---	4	SE141-115	---	MODULAR COIL WINDING FORM - TYPE "B"	SEE DWG 6	---
---	---	1	3	SE141-114	---	MODULAR COIL WINDING FORM - TYPE "A"	SEE DWG 6	---
---	4	---	2	THIS DWG	---	SLEEVE - Ø1.75 O.D. x Ø1.50 I.D. x 1 1/4 LG	1026 C'STL 24	---
---	1	---	1	THIS DWG	---	SLEEVE - Ø1.75 O.D. x Ø1.50 I.D. x 2 1/8 LG	1026 C'STL 6	---
---	---	---	---	THIS DWG	---	MOD COIL WINDING FORM - TYPE "C" TO SUPT RING ASSEMBLY	---	6
---	---	---	---	THIS DWG	---	MOD COIL WINDING FORM - TYPE "B" TO SUPT RING ASSEMBLY	---	6
---	---	---	---	THIS DWG	---	MOD COIL WINDING FORM - TYPE "A" TO SUPT RING ASSEMBLY	---	6

RELEASED FOR FABRICATION / INSTALLATION
PPPL Drafting:

REAR ISOMETRIC VIEW
SEE NOTE 1

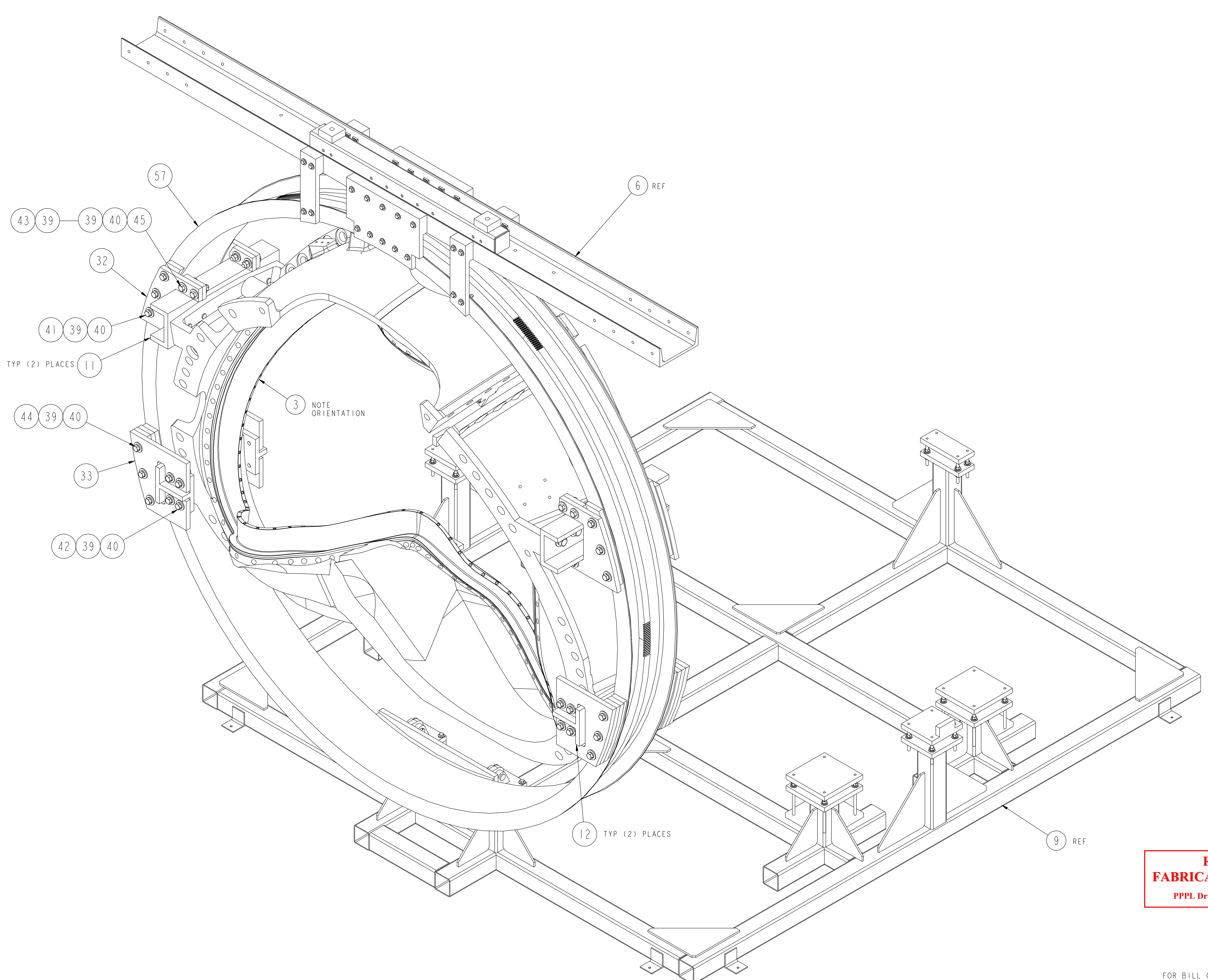
01 ASSEMBLY MODULAR COIL WINDING FORM - TYPE "A" TO SUPPORT RING ASSEMBLY

RELEASE LEVEL: Fabrication
DWG VERSION NO: 1

WEIGHT 9469.6 lbs	COMPUTER GENERATED DRAWING CHANGES NOT PERMITTED Pro E	CENTRAL FILES: UNLESS OTHERWISE SPECIFIED DIMENSIONS ARE IN INCHES MACHINE SURFACES BREAK SHARP EDGES .005/.020	PRINCETON PLASMA PHYSICS LABORATORY PRINCETON UNIVERSITY NATIONAL COMPACT STELLARATOR EXPERIMENT	
MODEL NAME SE144-050	DO NOT VERIFY INFORMATION BY SCALING DRAWING	TOLERANCES NON-CUMULATIVE DECIMAL-INCH FRACTIONS .XX ±.030 .XXX ±.005 ANGULAR ±.0°-15'	DSN: L. MORRIS CHK: S. RAFTOPOULOS ENGR: J. CHRZANOWSKI SUPV: J. SIEGEL	MODULAR COIL ASSEMBLY WINDING RING ASSEMBLY MODULAR COIL WINDING FORMS TO SUPPORT RING ASSEMBLIES
	NEXT ASSEMBLY		10-05-04 10-05-04 10-05-04 10-05-04	DRAWING NO: SE144-050 SHEET 1 OF 9 REV 0

NCSX-SE144-050

NO.	REVISION	BY	CH	SUP	APPROVED	DATE



FRONT ISOMETRIC VIEW
SEE NOTE 1

**RELEASED FOR
FABRICATION / INSTALLATION**
PPPL Drafting:

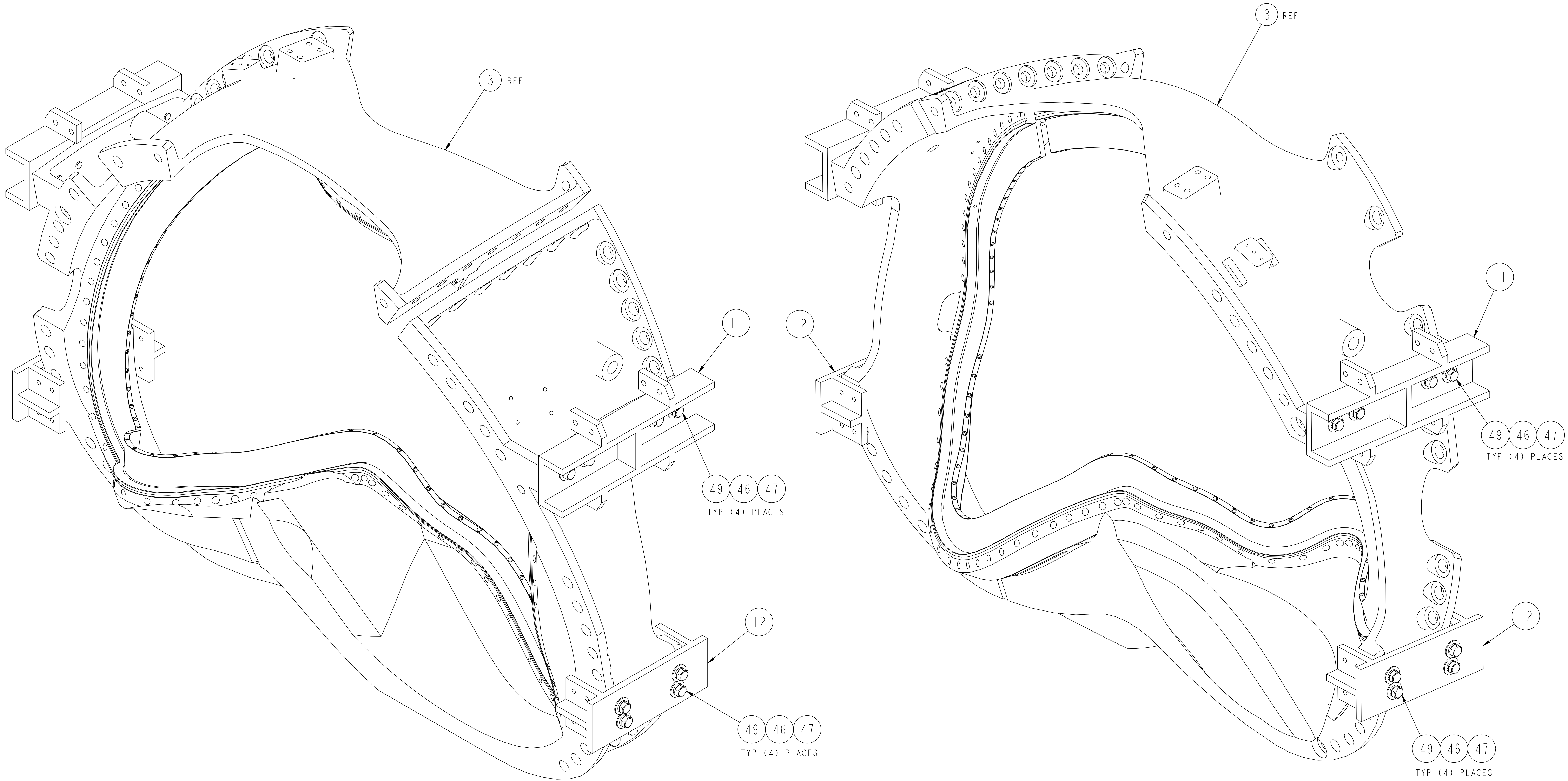
FOR BILL OF MATERIAL AND NOTES SEE SHEET 1

RELEASE LEVEL: Fabrication
DWG VERSION NO: 1

WEIGHT	9469.6 lbs
MODEL NAME	SE144-050
WELDING ENGINEER	

COMPUTER GENERATED DRAWING MANUAL CHANGES NOT PERMITTED Pro E	CENTRAL FILES: UNLESS OTHERWISE SPECIFIED	PRINCETON PLASMA PHYSICS LABORATORY PRINCETON UNIVERSITY NATIONAL COMPACT STELLARATOR EXPERIMENT	
DO NOT VERIFY INFORMATION BY SCALING DRAWING	DIMENSIONS ARE IN INCHES MACHINE SURFACES BREAK SHARP EDGES .005/.020	MODULAR COIL ASSEMBLY WINDING RING ASSEMBLY MODULAR COIL WINDING FORMS TO SUPPORT RING ASSEMBLIES	
NEXT ASSEMBLY	TOLERANCES NON-CUMULATIVE	DSN: L. MORRIS	10-05-04
	DECIMAL-INCH FRACTIONS	CHK: S. RAFTOPOULOS	10-05-04
	.X ±.100 0°-120° ±.100	ENGR: J. CHRZANOWSKI	10-05-04
	.XX ±.030 120°-120° ±.100	SUPV: J. SEIGEL	10-05-04
	.XXX ±.005 120°-120° ±.100 ANGULAR ±.0°-15° OVER 120° ±.100		
		DRAWING NO:	SE144-050
		SHEET 2 OF 9	REV 0

NO.	REVISION	BY	CH	SUP	APPROVED	DATE



FRONT ISOMETRIC VIEW - REF

MODULAR COIL WINDING FORM - TYPE "A" SHOWN
WITH MOUNTING BRACKETS IN PLACE PRIOR TO
POSITIONING OF WINDING FORM ON FIXTURE FRAME ASSEMBLY

REAR ISOMETRIC VIEW - REF

**RELEASED FOR
FABRICATION / INSTALLATION**
PPPL Drafting:

FOR BILL OF MATERIAL AND NOTES SEE SHEET 1

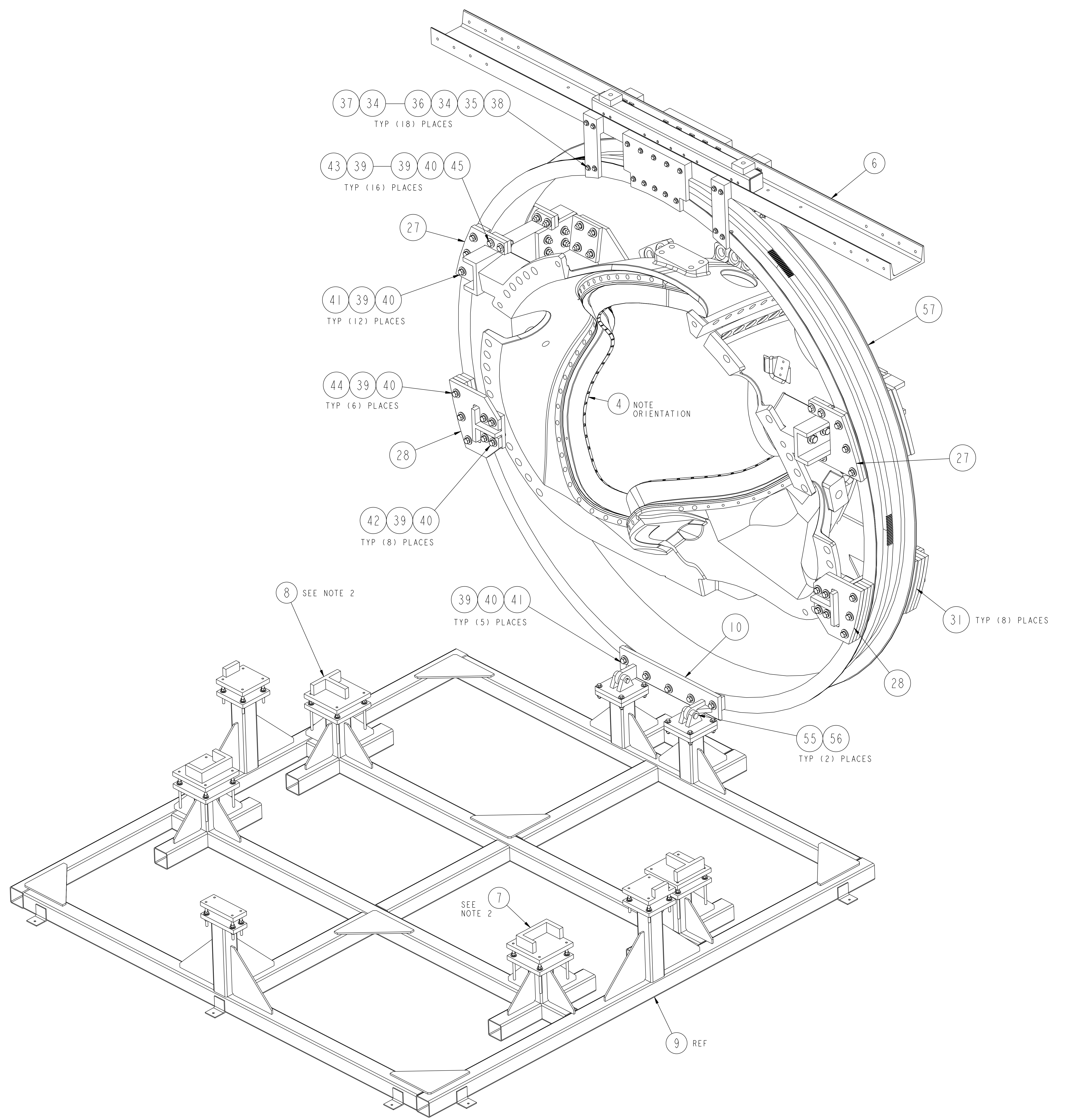
RELEASE LEVEL: Fabrication
DWG VERSION NO: 1

WEIGHT	9469.6 lbs
MODEL NAME	SE144-050
WELDING ENGINEER	

COMPUTER GENERATED DRAWING MANUAL CHANGES NOT PERMITTED Pro E	CENTRAL FILES: UNLESS OTHERWISE SPECIFIED DIMENSIONS ARE IN INCHES MACHINE SURFACES BREAK SHARP EDGES .005/.020	PRINCETON PLASMA PHYSICS LABORATORY PRINCETON UNIVERSITY NATIONAL COMPACT STELLARATOR EXPERIMENT	
DO NOT VERIFY INFORMATION BY SCALING DRAWING	TOLERANCES NON-CUMULATIVE DECIMAL-INCH FRACTIONS .XX +/- .000 .XXX +/- .005 ANGULAR +/- 0°-15'	DSN: L. MORRIS CHK: S. RAFTOPOULOS ENGR: J. CHRZANOWSKI SUPV: J. SIEGEL	10-05-04 10-05-04 10-05-04 10-05-04
NEXT ASSEMBLY		MODULAR COIL ASSEMBLY WINDING RING ASSEMBLY MODULAR COIL WINDING FORMS TO SUPPORT RING ASSEMBLIES	
		DRAWING NO: SE144-050	SHEET 3 OF 9 REV 0

NCSX-SE144-050

NO.	REVISION	BY	CH	SUP	APPROVED	DATE



**RELEASED FOR
FABRICATION / INSTALLATION**
PPPL Drafting:

FOR BILL OF MATERIAL AND NOTES SEE SHEET 1

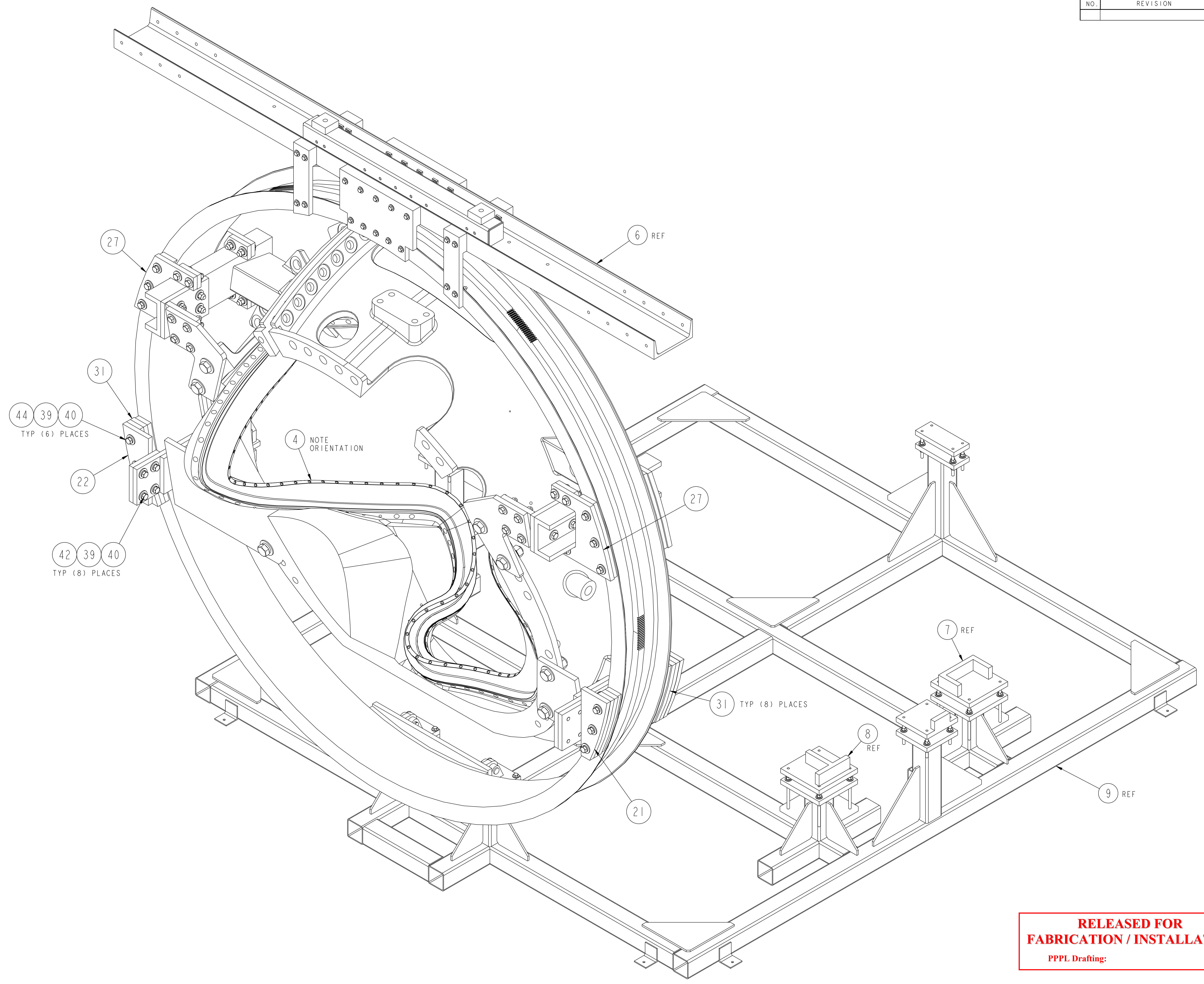
REAR ISOMETRIC VIEW
SEE NOTE 1

02 ASSEMBLY MODULAR COIL WINDING FORM - TYPE "B" TO SUPPORT RING ASSEMBLY

**RELEASE LEVEL: Fabrication
DWG VERSION NO: 1**

COMPUTER GENERATED DRAWING MANUAL CHANGES NOT PERMITTED Pro E	CENTRAL FILES:	PRINCETON PLASMA PHYSICS LABORATORY NATIONAL COMPACT STELLARATOR EXPERIMENT		
	UNLESS OTHERWISE SPECIFIED	MODULAR COIL ASSEMBLY WINDING RING ASSEMBLY MODULAR COIL WINDING FORMS TO SUPPORT RING ASSEMBLIES		
DO NOT VERIFY INFORMATION BY SCALING DRAWING	DIMENSIONS ARE IN INCHES MACHINE SURFACES BREAK SHARP EDGES .005/.020	DSN: L. MORRIS	10-05-04	DRAWING NO:
NEXT ASSEMBLY	TOLERANCES NON-CUMULATIVE DECIMAL-INCH FRACTIONS .XX ±.000 .XXX ±.005 ANGULAR ±.0°-15'	CHK: S. RAFTOPOULOS ENGR: J. CHRZANOWSKI SUPV: J. SIEGEL	10-05-04 10-05-04 10-05-04	SE144-050
WEIGHT	9843.2 lbs			SHEET 4 OF 9
MODEL NAME	SE144-050-02			REV 0
WELDING ENGINEER				

NO.	REVISION	BY	CH	SUP	APPROVED	DATE



**RELEASED FOR
FABRICATION / INSTALLATION**
PPPL Drafting:

FRONT ISOMETRIC VIEW
SEE NOTE 1

FOR BILL OF MATERIAL AND NOTES SEE SHEET 1

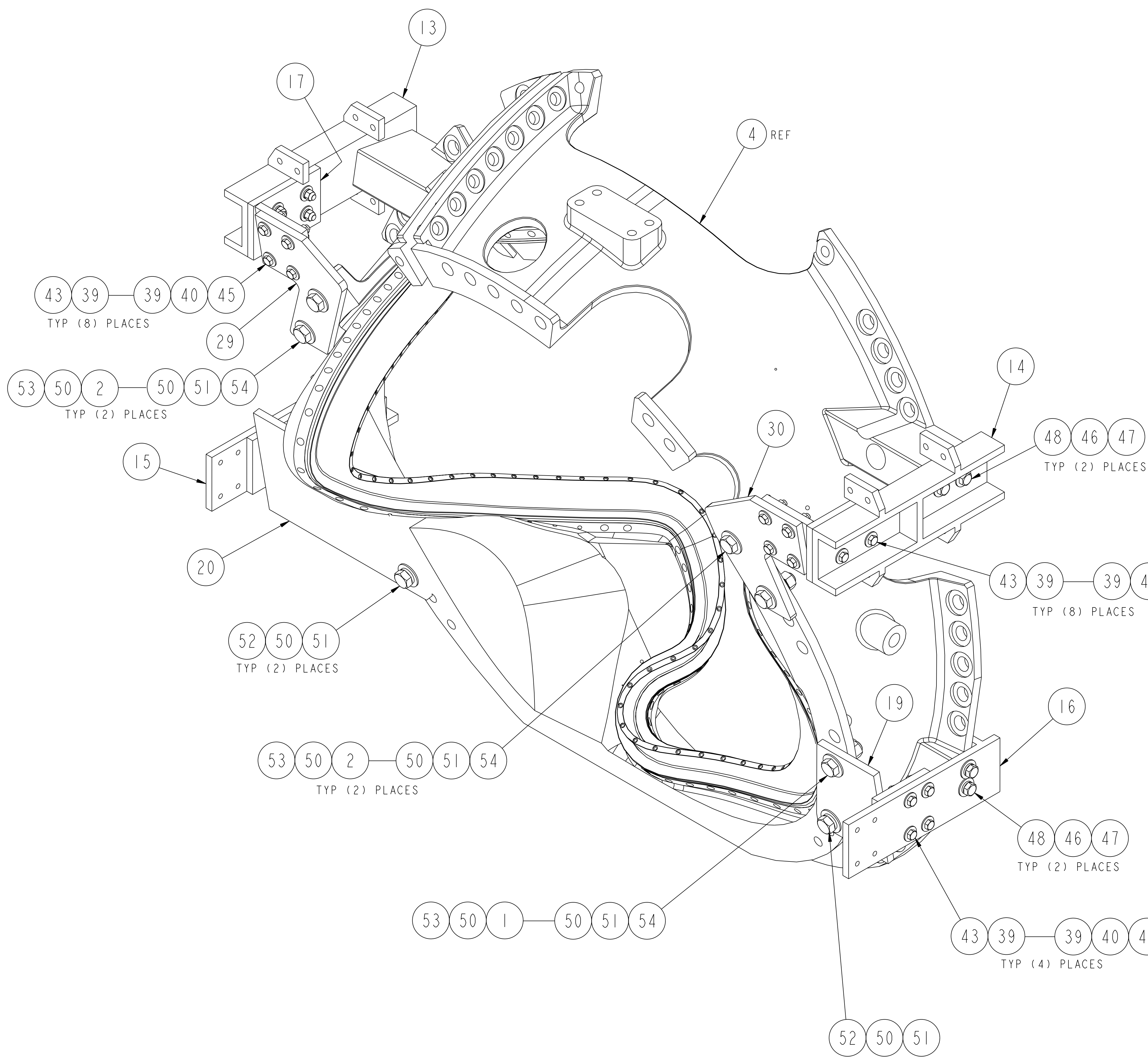
RELEASE LEVEL: Fabrication
DWG VERSION NO: 1

WEIGHT	9469.6 lbs
MODEL NAME	SE144-050
WELDING ENGINEER	

COMPUTER GENERATED DRAWING MANUAL CHANGES NOT PERMITTED Pro E	CENTRAL FILES: UNLESS OTHERWISE SPECIFIED DIMENSIONS ARE IN INCHES MACHINE SURFACES BREAK SHARP EDGES .005/.020	PRINCETON PLASMA PHYSICS LABORATORY PRINCETON UNIVERSITY NATIONAL COMPACT STELLARATOR EXPERIMENT		
DO NOT VERIFY INFORMATION BY SCALING DRAWING	TOLERANCES NON-CUMULATIVE	MODULAR COIL ASSEMBLY WINDING RING ASSEMBLY MODULAR COIL WINDING FORMS TO SUPPORT RING ASSEMBLIES		
NEXT ASSEMBLY	DECIMAL-INCH FRACTIONS	DSN: L. MORRIS	10-05-04	DRAWING NO:
	.XX +/- .000 .XXX +/- .005 ANGULAR +/- .0°-15'	CHK: S. RAFTOPOULOS	10-05-04	SE144-050
		ENGR: J. CHRZANOWSKI	10-05-04	SHEET 5 OF 9
		SUPV: J. SIEGEL	10-05-04	REV 0

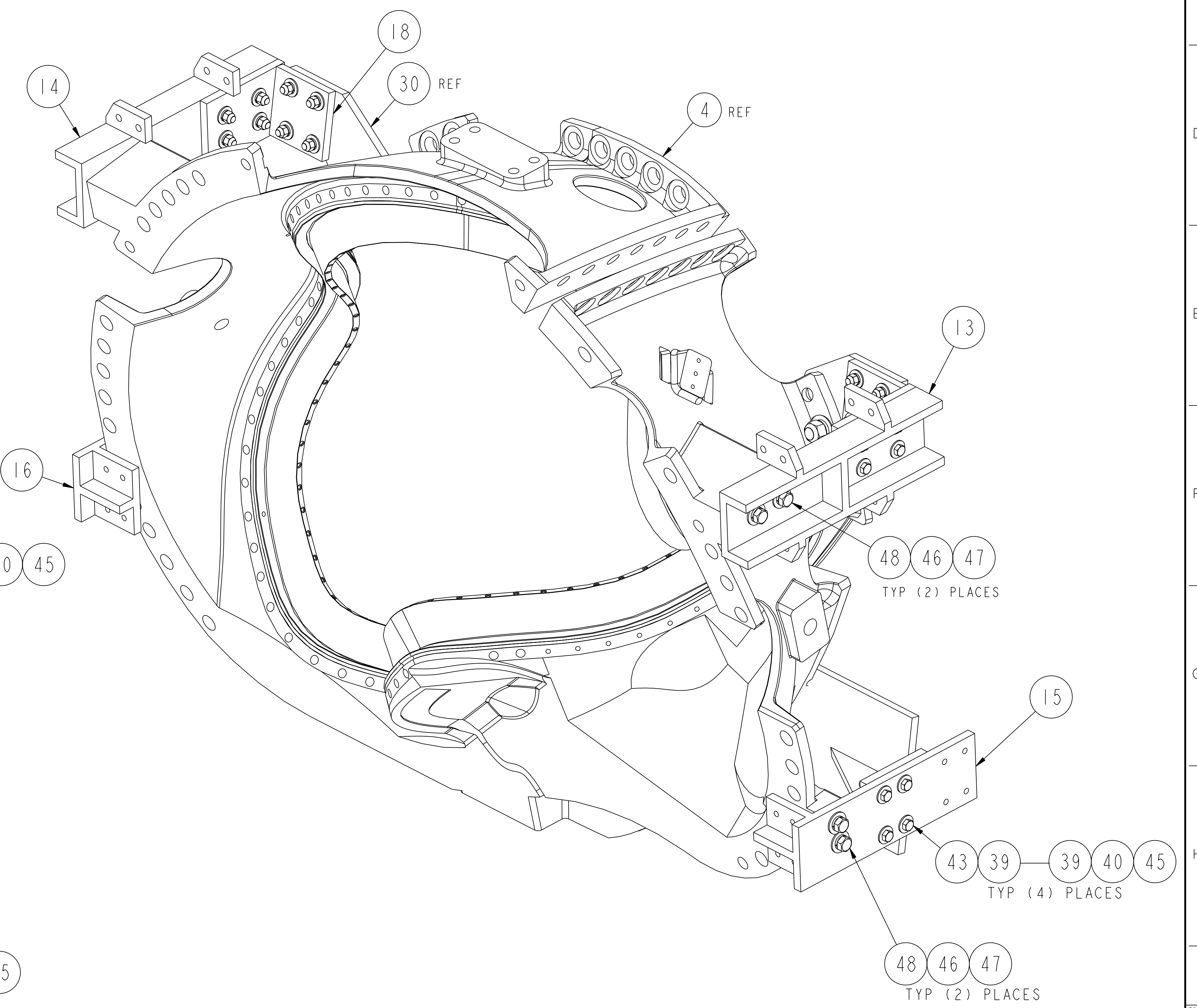
NCSX-SE144-050

NO.	REVISION	BY	CH	SUP	APPROVED	DATE



FRONT ISOMETRIC VIEW - REF

MODULAR COIL WINDING FORM - TYPE "B" SHOWN WITH MOUNTING BASKETS IN PLACE PRIOR TO POSITIONING OF WINDING FORM ON FIXTURE FRAME ASSEMBLY



REAR ISOMETRIC VIEW - REF

RELEASED FOR FABRICATION / INSTALLATION
PPPL Drafting:

FOR BILL OF MATERIAL AND NOTES SEE SHEET 1

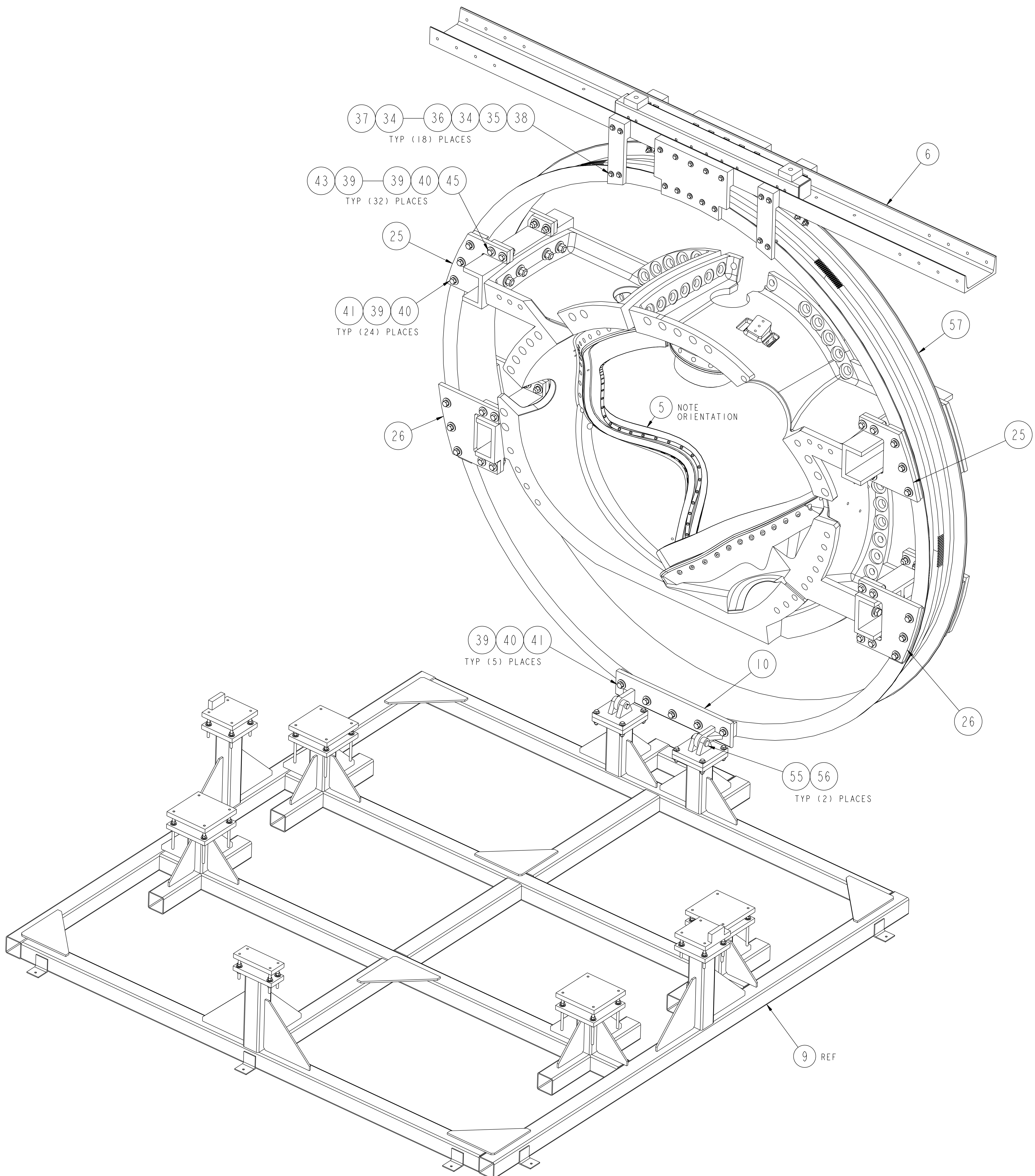
RELEASE LEVEL: Fabrication
DWG VERSION NO: 1

WEIGHT	9843.2 lbs
MODEL NAME	SEI44-050-02
WELDING ENGINEER	

COMPUTER GENERATED DRAWING MANUAL CHANGES NOT PERMITTED Pro E	CENTRAL FILES: UNLESS OTHERWISE SPECIFIED DIMENSIONS ARE IN INCHES MACHINE SURFACES B 	PRINCETON PLASMA PHYSICS LABORATORY PRINCETON UNIVERSITY NATIONAL COMPACT STELLARATOR EXPERIMENT	
DO NOT VERIFY INFORMATION BY SCALING DRAWING	TOLERANCES NON-CUMULATIVE DECIMAL-INCH FRACTIONS 	MODULAR COIL ASSEMBLY WINDING RING ASSEMBLY MODULAR COIL WINDING FORMS TO SUPPORT RING ASSEMBLIES	
NEXT ASSEMBLY		DSN: L. MORRIS	10-05-04
		CHK: S. RAFTOPOULOS	10-05-04
		ENGR: J. CHRZANOWSKI	10-05-04
		SUPV: J. SIEGEL	10-05-04
		DRAWING NO:	SEI44-050
		SHEET 6 OF 9	REV 0

NCSX-SEI44-050

NO.	REVISION	BY	CH	SUP	APPROVED	DATE



**RELEASED FOR
FABRICATION / INSTALLATION**

PPPL Drafting:

FOR BILL OF MATERIALS AND NOTES SEE SHEET 1

REAR ISOMETRIC VIEW
SEE NOTE 1

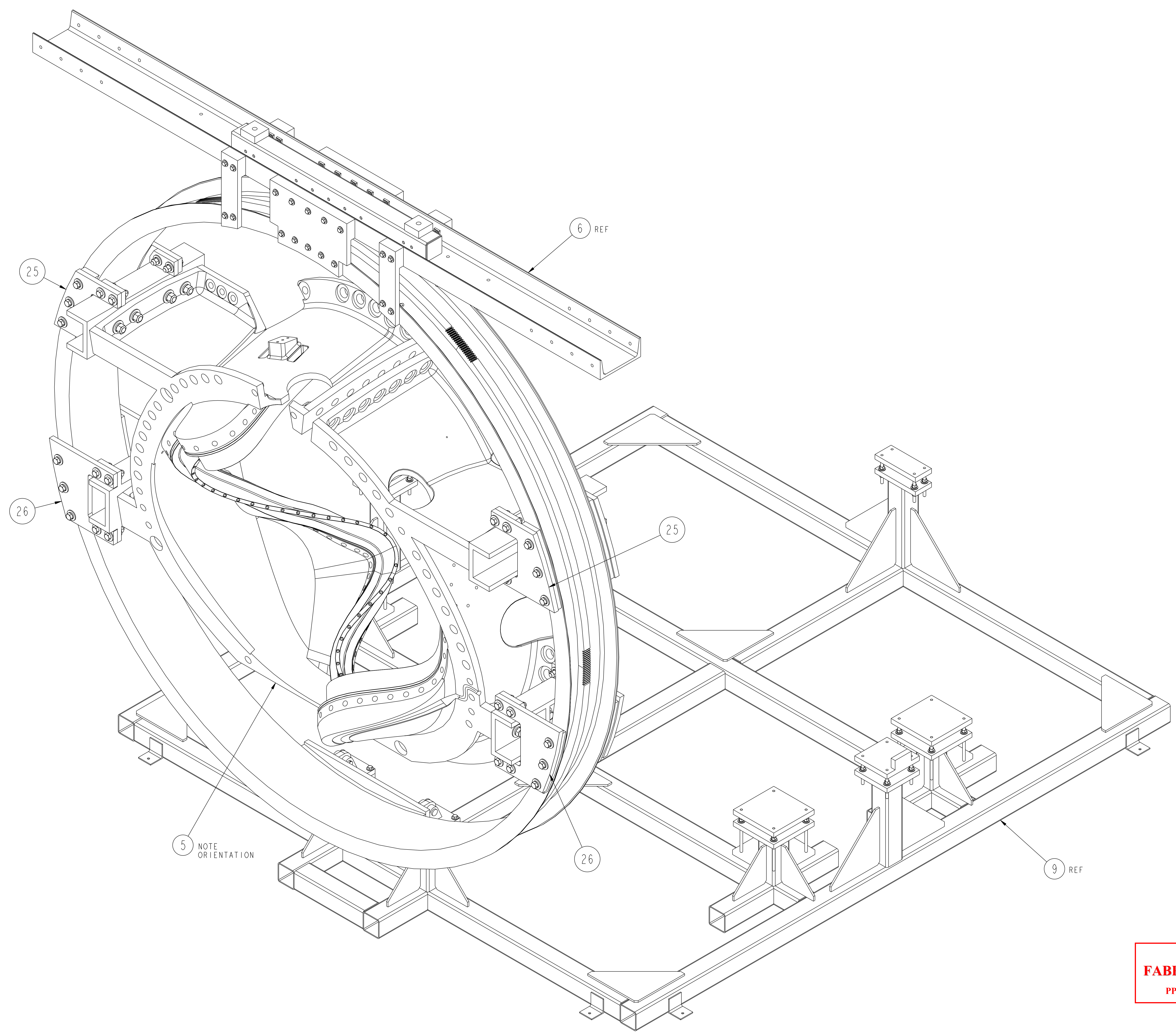
03 ASSEMBLY MODULAR COIL WINDING FORM - TYPE "C" TO SUPPORT RING ASSEMBLY

RELEASE LEVEL: Fabrication
DWG VERSION NO: 1

COMPUTER GENERATED DRAWING MANUAL CHANGES NOT PERMITTED Pro E	CENTRAL FILES:	PRINCETON PLASMA PHYSICS LABORATORY NATIONAL COMPACT STELLARATOR EXPERIMENT			
	UNLESS OTHERWISE SPECIFIED	MODULAR COIL ASSEMBLY WINDING RING ASSEMBLY MODULAR COIL WINDING FORMS TO SUPPORT RING ASSEMBLIES			
DO NOT VERIFY INFORMATION BY SCALING DRAWING	DIMENSIONS ARE IN INCHES MACHINE SURFACES BREAK SHARP EDGES .005/.020	DSN: L. MORRIS	10-05-04	DRAWING NO:	
NEXT ASSEMBLY	TOLERANCES NON-CUMULATIVE DECIMAL-INCH FRACTIONS .XX ±.000 .XXX ±.005 ANGULAR ±.0°-15'	CHK: S. RAFTOPOULOS ENGR: J. CHRZANOWSKI SUPV: J. SIEGEL	10-05-04 10-05-04 10-05-04	10-05-04	SE144-050
WEIGHT	9434.9 lbs			SHEET 7 OF 9	REV 0
MODEL NAME	SE144-050-03				
WELDING ENGINEER					

NCSX-SE144-050

NO.	REVISION	BY	CH	SUP	APPROVED	DATE



5 NOTE ORIENTATION

6 REF

25

26

9 REF

FRONT ISOMETRIC VIEW
SEE NOTE 1

**RELEASED FOR
FABRICATION / INSTALLATION**
PPPL Drafting:

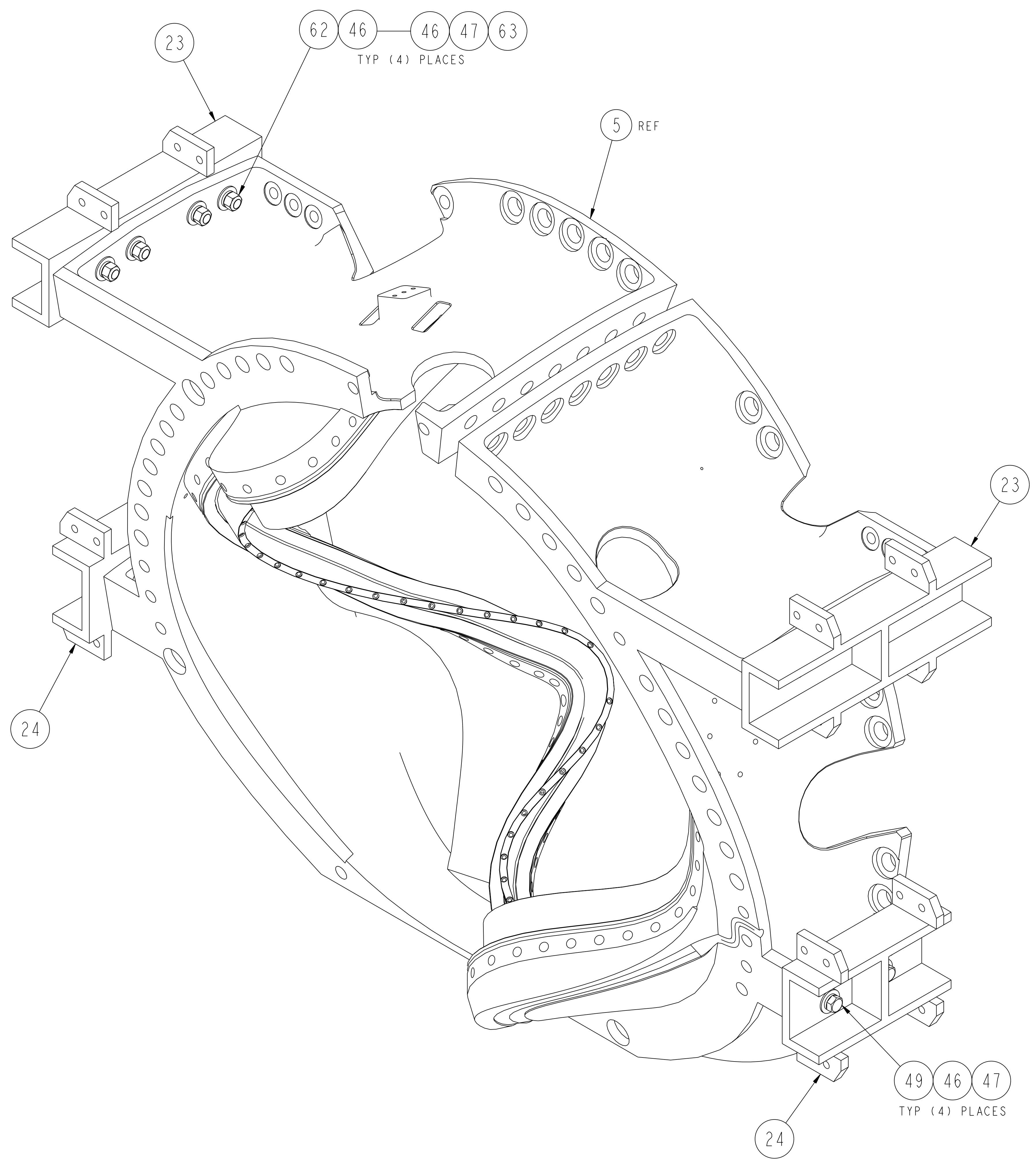
FOR BILL OF MATERIALS AND NOTES SEE SHEET 1

RELEASE LEVEL: Fabrication
DWG VERSION NO: 1

COMPUTER GENERATED DRAWING MANUAL CHANGES NOT PERMITTED Pro E	CENTRAL FILES: UNLESS OTHERWISE SPECIFIED	PRINCETON PLASMA PHYSICS LABORATORY PRINCETON UNIVERSITY NATIONAL COMPACT STELLARATOR EXPERIMENT
DO NOT VERIFY INFORMATION BY SCALING DRAWING	DIMENSIONS ARE IN INCHES MACHINE SURFACES BREAK SHARP EDGES .005/.020	MODULAR COIL ASSEMBLY WING RING ASSEMBLY MODULAR COIL WINDING FORMS TO SUPPORT RING ASSEMBLIES
NEXT ASSEMBLY	TOLERANCES NON-CUMULATIVE DECIMAL-INCH FRACTIONS .XX ±.000 .XXX ±.005 ANGULAR ±.0°-15° OVER 120° ±.1°-1.2°	DSN: L. MORRIS 10-05-04 CHK: S. RAFTOPOULOS 10-05-04 ENGR: J. CHRZANOWSKI 10-05-04 SUPV: J. SIEGEL 10-05-04
WEIGHT 9843.2 lbs		DRAWING NO: SE144-050
MODEL NAME SE144-050-02		SHEET 8 OF 9 REV 0

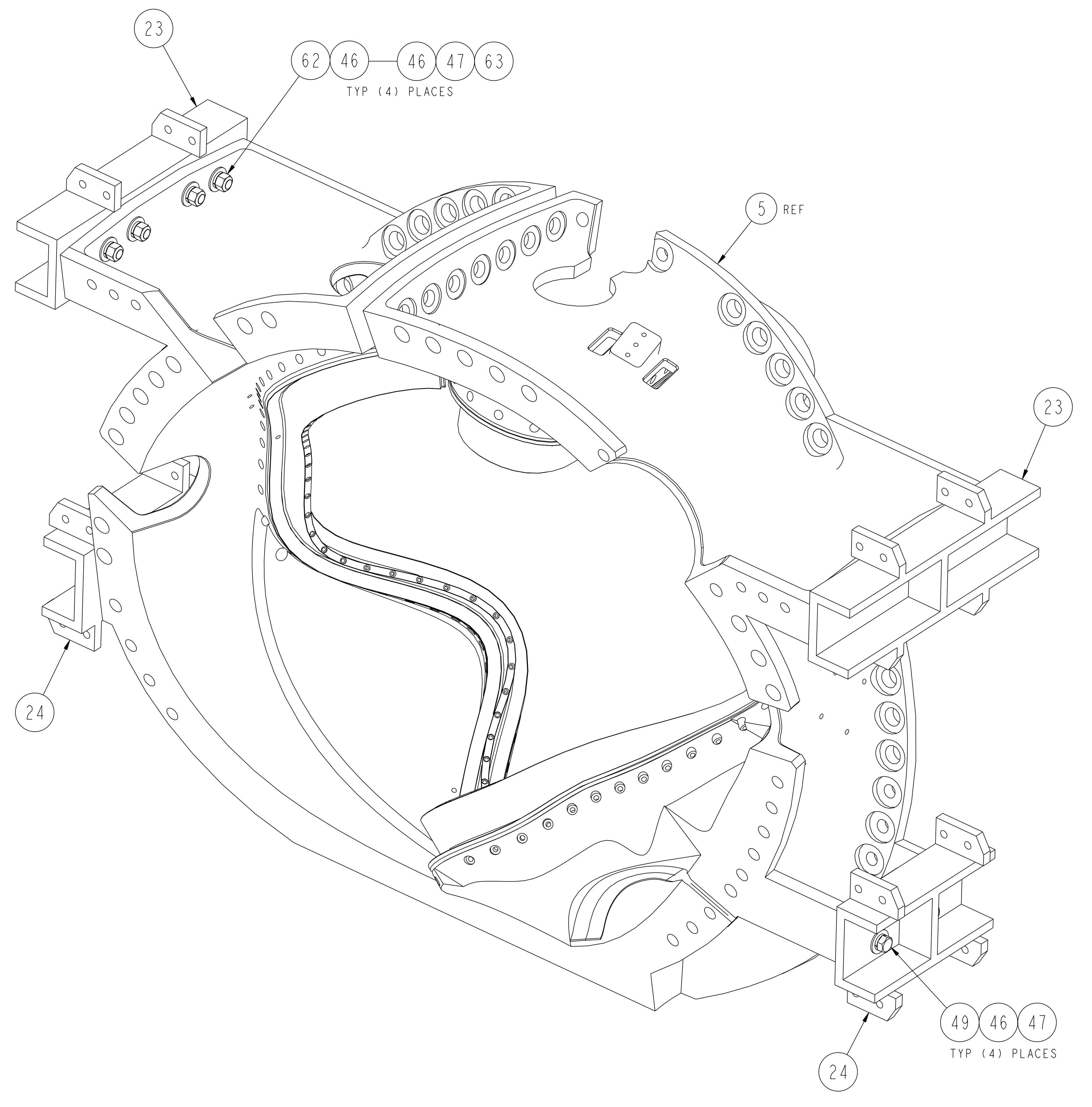
NCSX-SE144-050

NO.	REVISION	BY	CH	SUP	APPROVED	DATE



FRONT ISOMETRIC VIEW - REF

MODULAR COIL WINDING FORM - TYPE "C" SHOWN WITH MOUNTING BRACKETS IN PLACE PRIOR TO POSITIONING OF WINDING FORM ON FIXTURE FRAME ASSEMBLY



REAR ISOMETRIC VIEW - REF

RELEASED FOR FABRICATION / INSTALLATION
PPPL Drafting:

FOR BILL OF MATERIALS AND NOTES SEE SHEET 1

RELEASE LEVEL: Fabrication
DWG VERSION NO: 1

WEIGHT	9434.9 lbs
MODEL NAME	SE144-050-03
WELDING ENGINEER	

COMPUTER GENERATED DRAWING CHANGES NOT PERMITTED	CENTRAL FILES:	PRINCETON PLASMA PHYSICS LABORATORY	
Pro E	UNLESS OTHERWISE SPECIFIED	NATIONAL COMPACT STELLARATOR EXPERIMENT	
DO NOT VERIFY INFORMATION BY SCALING DRAWING	DIMENSIONS ARE IN INCHES MACHINE SURFACES	MODULAR COIL ASSEMBLY WINDING RING ASSEMBLY	
DO NOT VERIFY INFORMATION BY SCALING DRAWING	BREAK SHARP EDGES .005/.020	MODULAR COIL WINDING FORMS TO SUPPORT RING ASSEMBLIES	
NEXT ASSEMBLY	TOLERANCES NON-CUMULATIVE	DSN: L. MORRIS	10-05-04 DRAWING NO:
	DECIMAL-INCH FRACTIONS	CHK: S. RAFTOPOULOS	10-05-04
	.X .X	ENGR: J. CHRZANOWSKI	10-05-04
	.XX .XX	SUPV: J. SIEGEL	10-05-04
	.XXX .XXX		
	ANGULAR .015 .015		

SE144-050
SHEET 9 OF 9
REV 0

NCSX-SE144-050