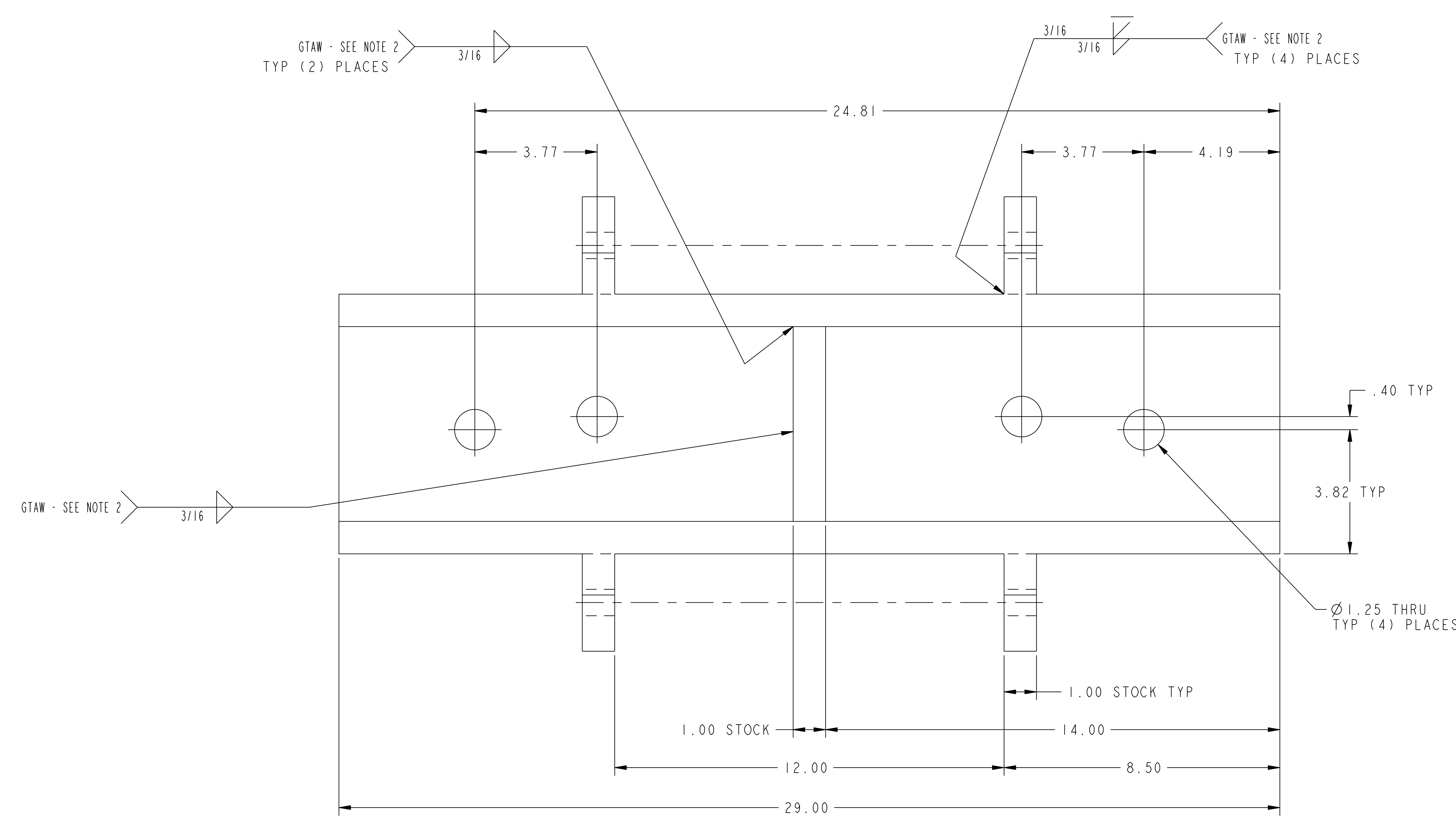
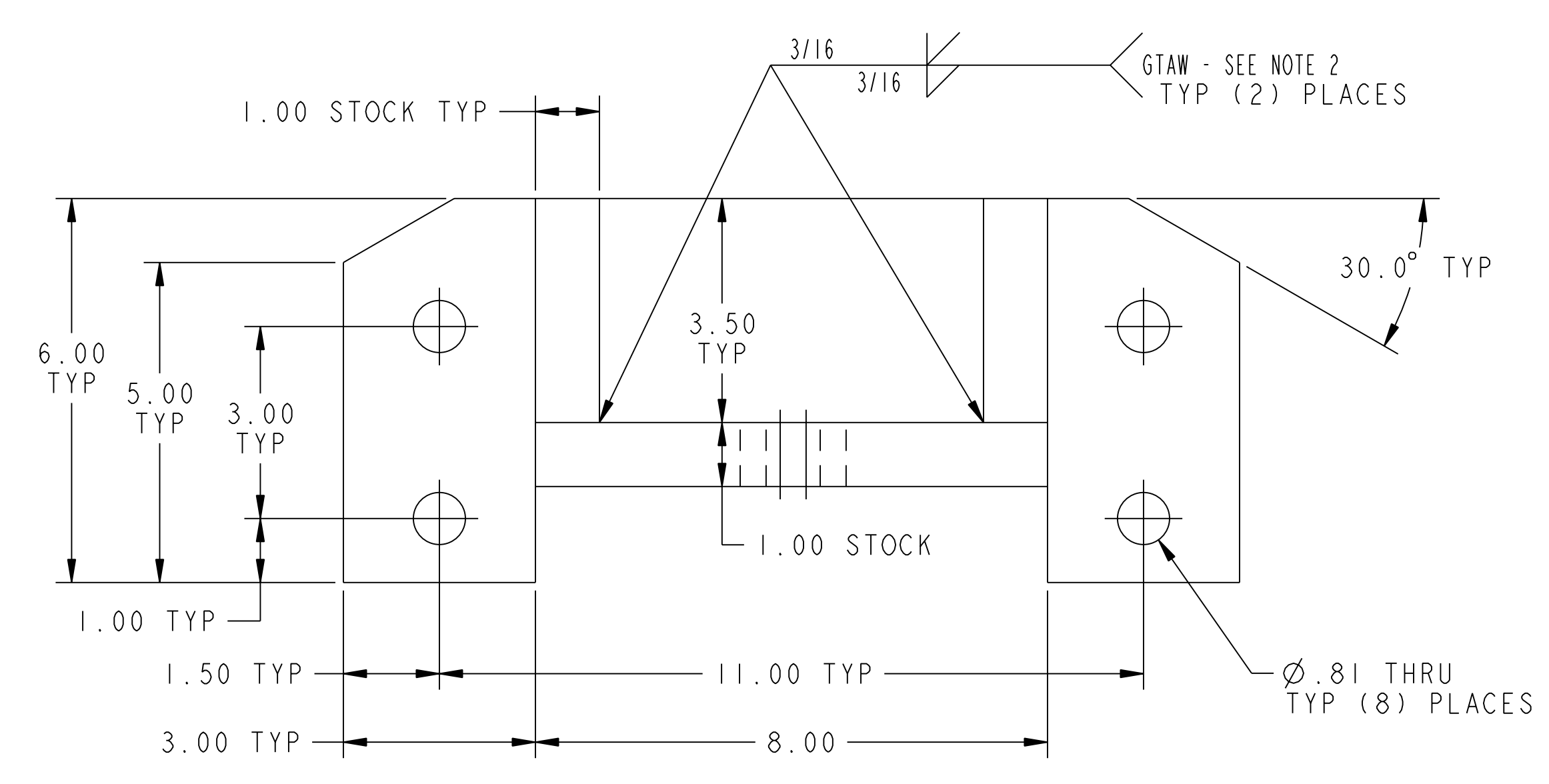
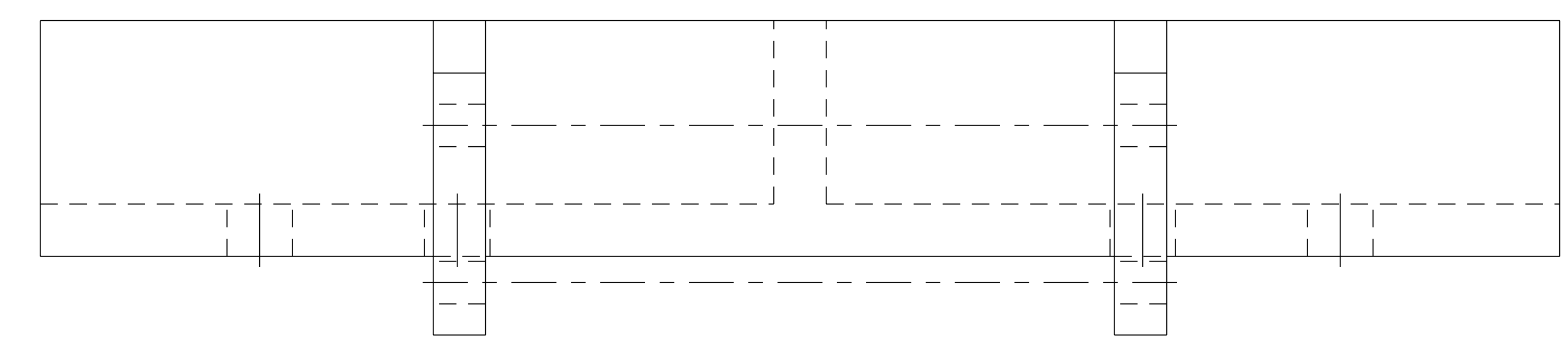


NO.	REVISION	BY	CH	SUP	APPROVED	DATE



- NOTES**
1. ALL PARTS OF THESE WELDMENTS TO BE FABRICATED USING 1" THICK PLATE ASTM A36 CUT TO SUIT.
  2. WELDING SHALL BE PERFORMED IN ACCORDANCE WITH THE REQUIREMENTS OF AWS D1.1 AND/OR PPPL PROCEDURE EM-002. VISUAL WELD INSPECTION SHALL BE PERFORMED IN ACCORDANCE WITH THE ACCEPTANCE CRITERIA OF AWS D1.1 Section 6.
  3. ALL HOLES TO BE MACHINED AFTER ALL WELDING IS COMPLETE.



01 ASSEMBLY OUTER SUPPORT BRACKET WELDMENT

**RELEASED FOR FABRICATION / INSTALLATION**  
PPPL Drafting:

A/R	A/R	I	THIS DWG	1" THICK PLATE STOCK - SEE NOTE 1	ASTM A36	A/R
			THIS DWG	INNER SUPPORT BRACKET WELDMENT		12
			THIS DWG	OUTER SUPPORT BRACKET WELDMENT		12
02 ASSY	01 ASSY	PART NO.	DRAWING NO.	NOMENCLATURE OR DESCRIPTION	MATERIAL	QTY REQD

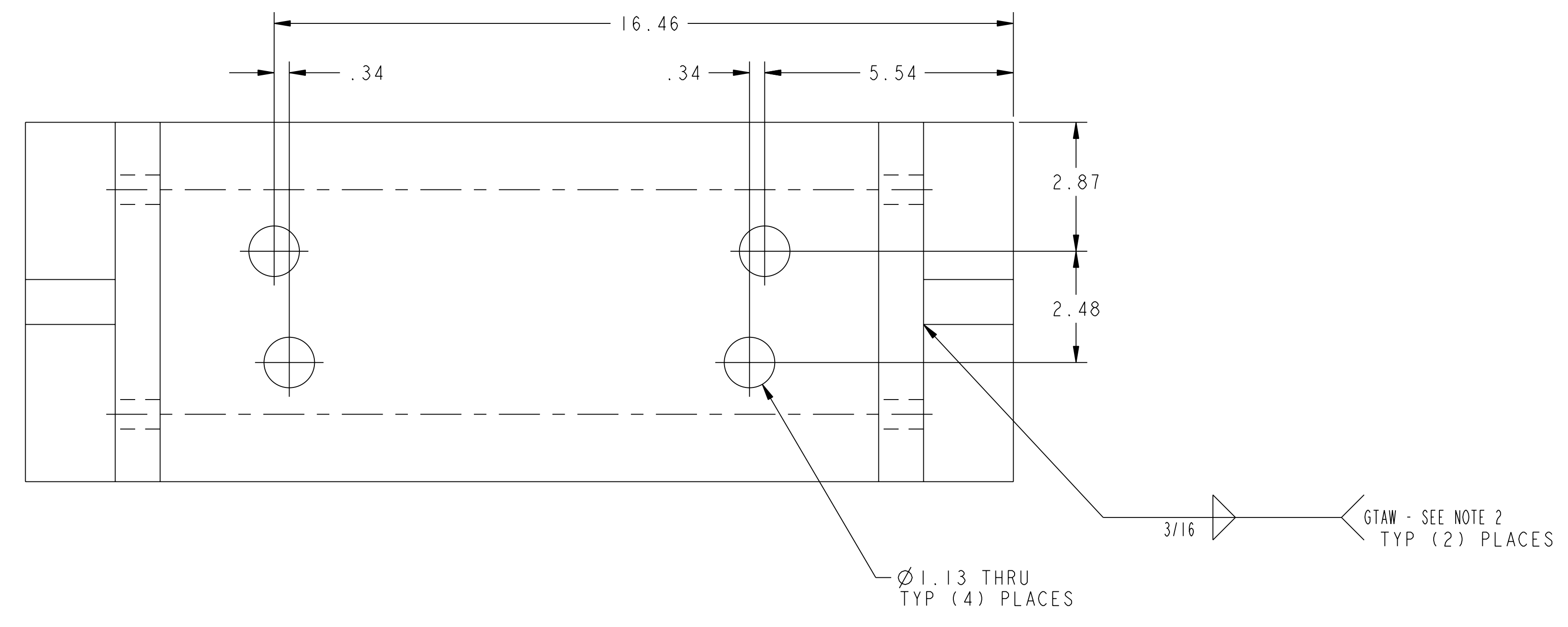
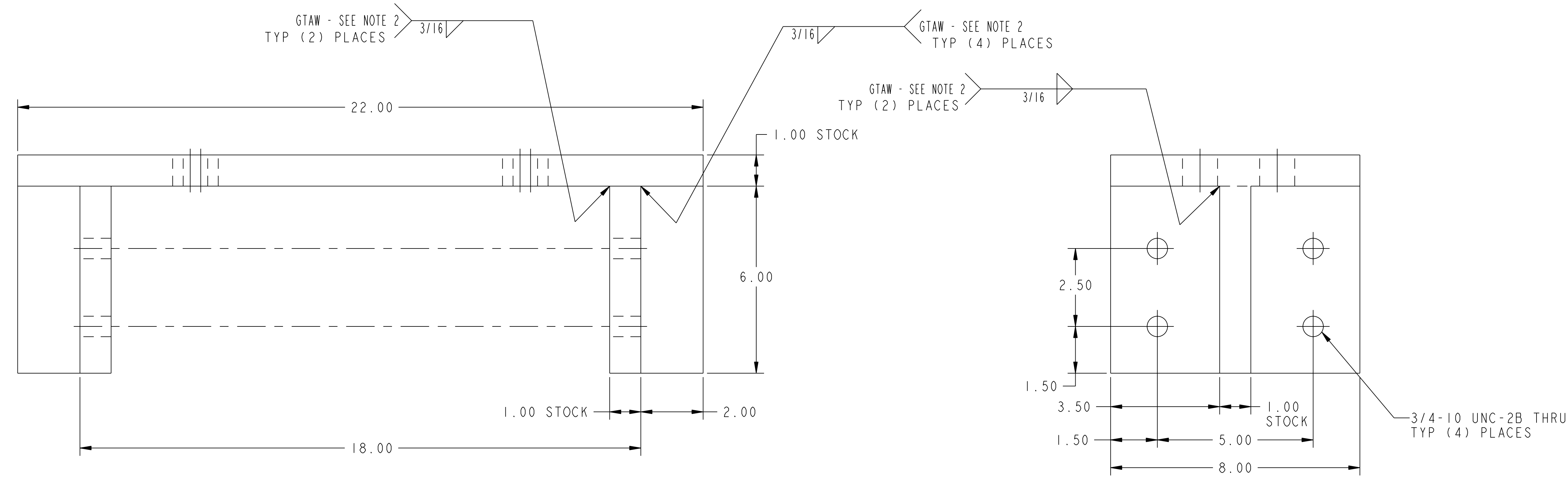
**PARTS LIST**

COMPUTER GENERATED DRAWING MANUAL CHANGES NOT PERMITTED Pro E	CENTRAL FILES: UNLESS OTHERWISE SPECIFIED DIMENSIONS ARE IN INCHES MACHINE SURFACES UNLESS OTHERWISE SPECIFIED BREAK SHARP EDGES .005/.020	PRINCETON PLASMA PHYSICS LABORATORY PRINCETON UNIVERSITY <b>NATIONAL COMPACT STELLARATOR EXPERIMENT</b>			
DO NOT VERIFY INFORMATION BY SCALING DRAWING	TOLERANCES NON-CUMULATIVE	MODULAR COIL ASSEMBLY WINDING RING ASSEMBLY TYPE "A" WINDING FORM SUPPORT BRACKET WELDMENTS			
WEIGHT 144.3 lbs	DECIMAL-INCH FRACTIONS	DSN: L. MORRIS	7-26-04	DRAWING NO: <b>SE144-055</b>	
MODEL NAME SE144-055-01	NEXT ASSEMBLY	CHK: S. RAFTOPOULOS	7-26-04	ENGR: J. CHRZANOWSKI	
WELDING ENGINEER R. PARSELLS 7-26-04	REVISIONS	SUPV: J. SIEGEL	7-26-04	SHEET 1 OF 2	REV 0

**RELEASE LEVEL: Fabrication**  
**DWG VERSION NO: 0**

NCSX-SE144-055

NO.	REVISION	BY	CH	SUP	APPROVED	DATE



02 ASSEMBLY INNER SUPPORT BRACKET WELDMENT

**RELEASED FOR  
FABRICATION / INSTALLATION**  
PPPL Drafting:

FOR NOTES AND B/M SEE SHEET 1

**RELEASE LEVEL: Fabrication**  
**DWG VERSION NO: 0**

COMPUTER GENERATED DRAWING CHANGES NOT PERMITTED Pro E	CENTRAL FILES:	PRINCETON PLASMA PHYSICS LABORATORY			
	UNLESS OTHERWISE SPECIFIED	NATIONAL COMPACT STELLARATOR EXPERIMENT			
DO NOT VERIFY INFORMATION BY SCALING DRAWING	DIMENSIONS ARE IN INCHES MACHINE SURFACES	MODULAR COIL ASSEMBLY WINDING RING ASSEMBLY TYPE "A" WINDING FORM SUPPORT BRACKET WELDMENTS			
NEXT ASSEMBLY	TOLERANCES NON-CUMULATIVE	DSN: L. MORRIS	7-26-04	DRAWING NO:	
	DECIMAL-INCH FRACTIONS	CHK: S. RAFTOPOULOS	7-26-04	SE144-055	
WELDING ENGINEER	R. PARSELLS 7-26-04	ENGR: J. CHRZANOWSKI	7-26-04	SUPV: J. SIEGEL	7-26-04
				SHEET 2 OF 2	REV 0

NCSX-SE144-055