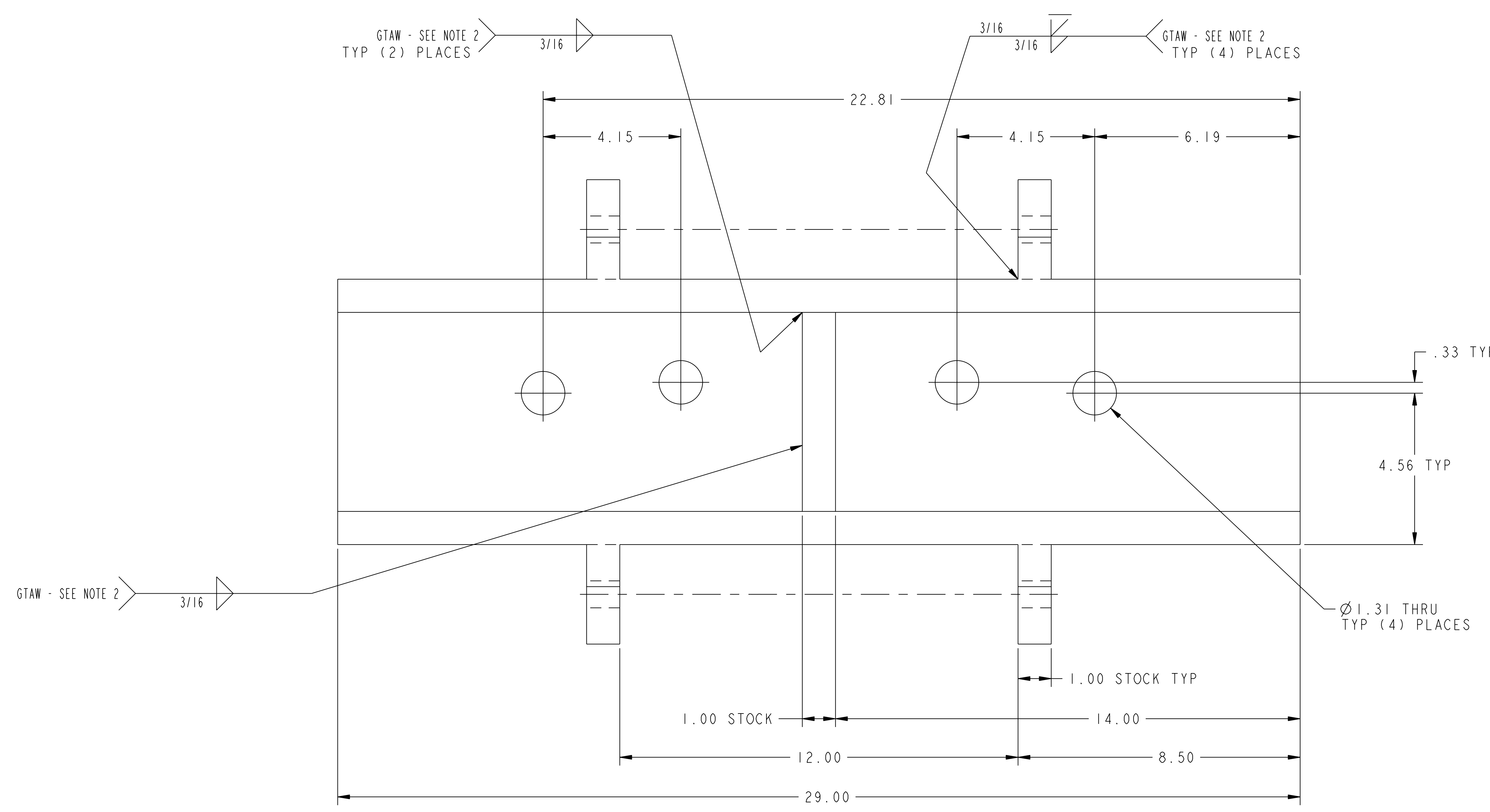
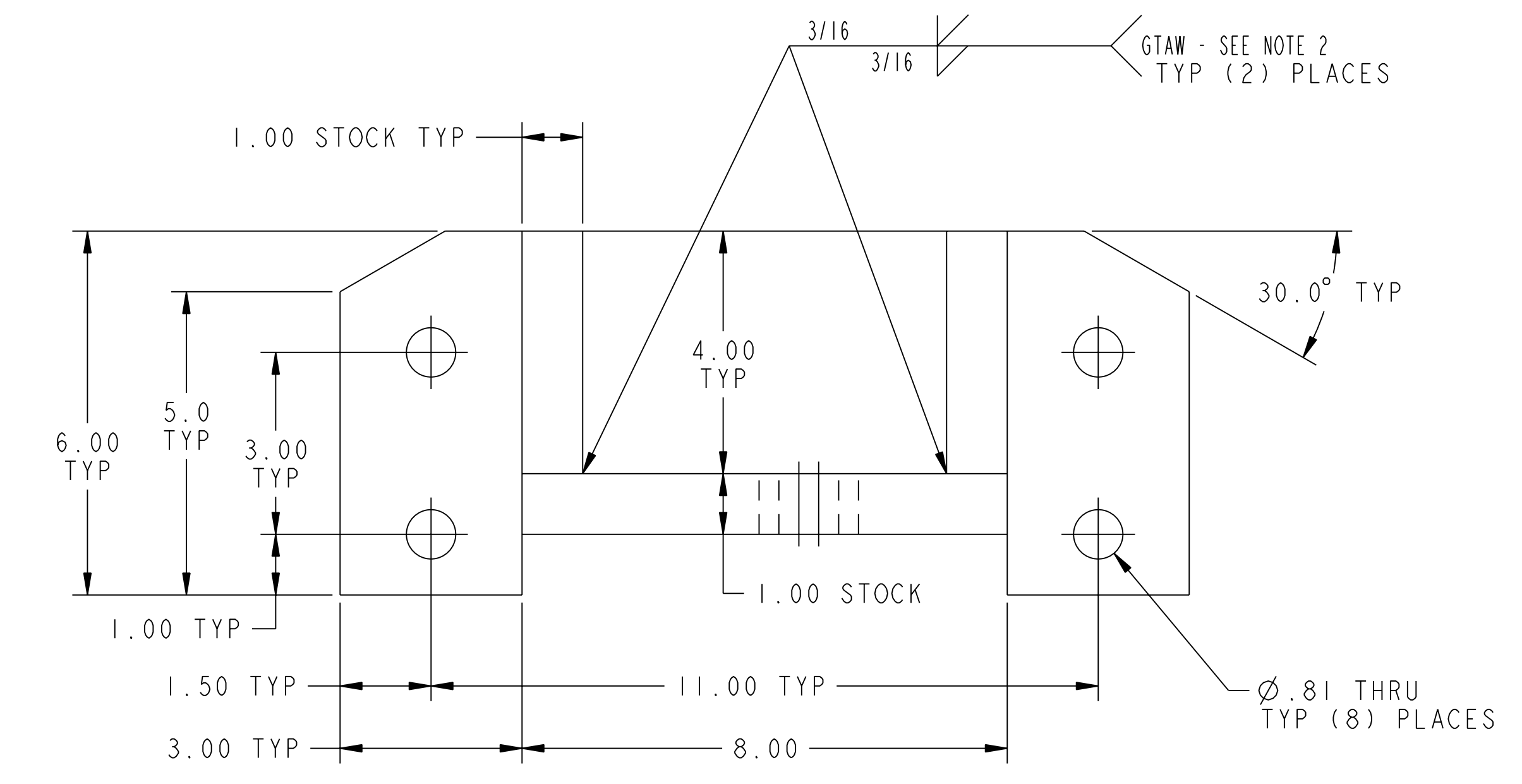
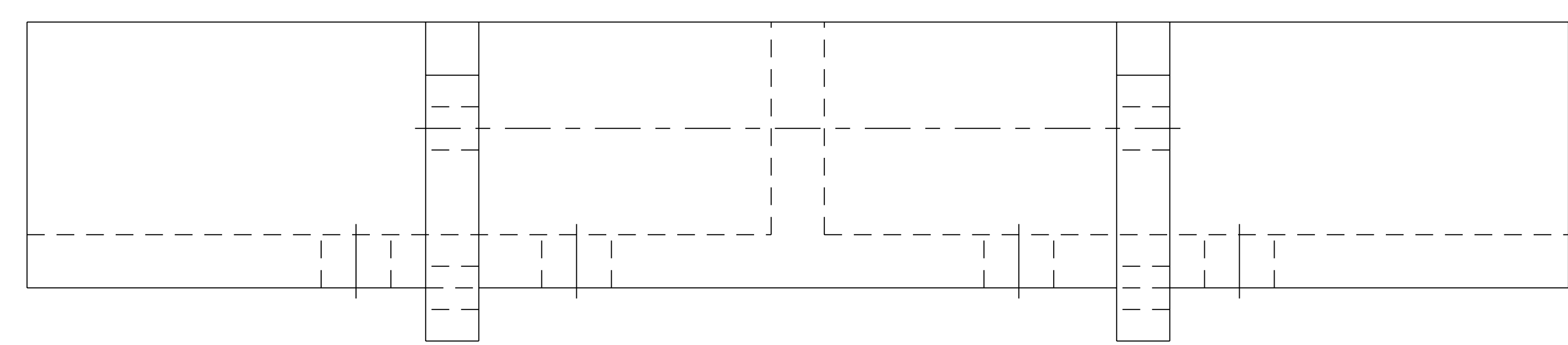


NO.	REVISION	BY	CH	SUP	APPROVED	DATE



**NOTES**

1. ALL PARTS OF THESE WELDMENTS TO BE FABRICATED USING 1" THICK PLATE ASTM A36 CUT TO SUIT.
2. WELDING SHALL BE PERFORMED IN ACCORDANCE WITH THE REQUIREMENTS OF AWS D1.1 AND/OR PPPL PROCEDURE EM-002. VISUAL WELD INSPECTION SHALL BE PERFORMED IN ACCORDANCE WITH THE ACCEPTANCE CRITERIA OF AWS D1.1 Section 6.
3. ALL HOLES TO BE MACHINED AFTER ALL WELDING IS COMPLETE.



01 ASSEMBLY OUTER SUPPORT BRACKET WELDMENT

**RELEASED FOR FABRICATION / INSTALLATION**  
PPPL Drafting:

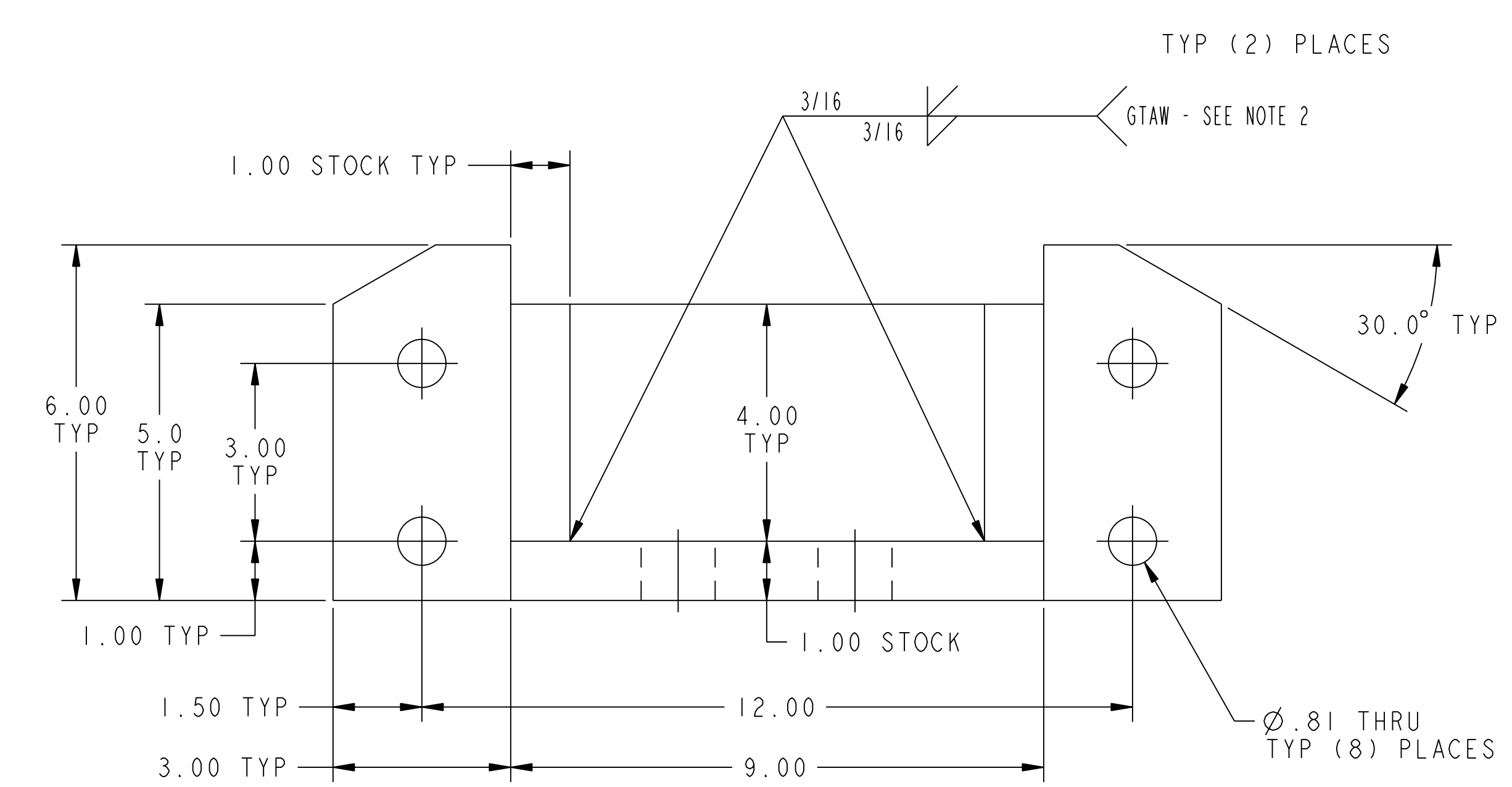
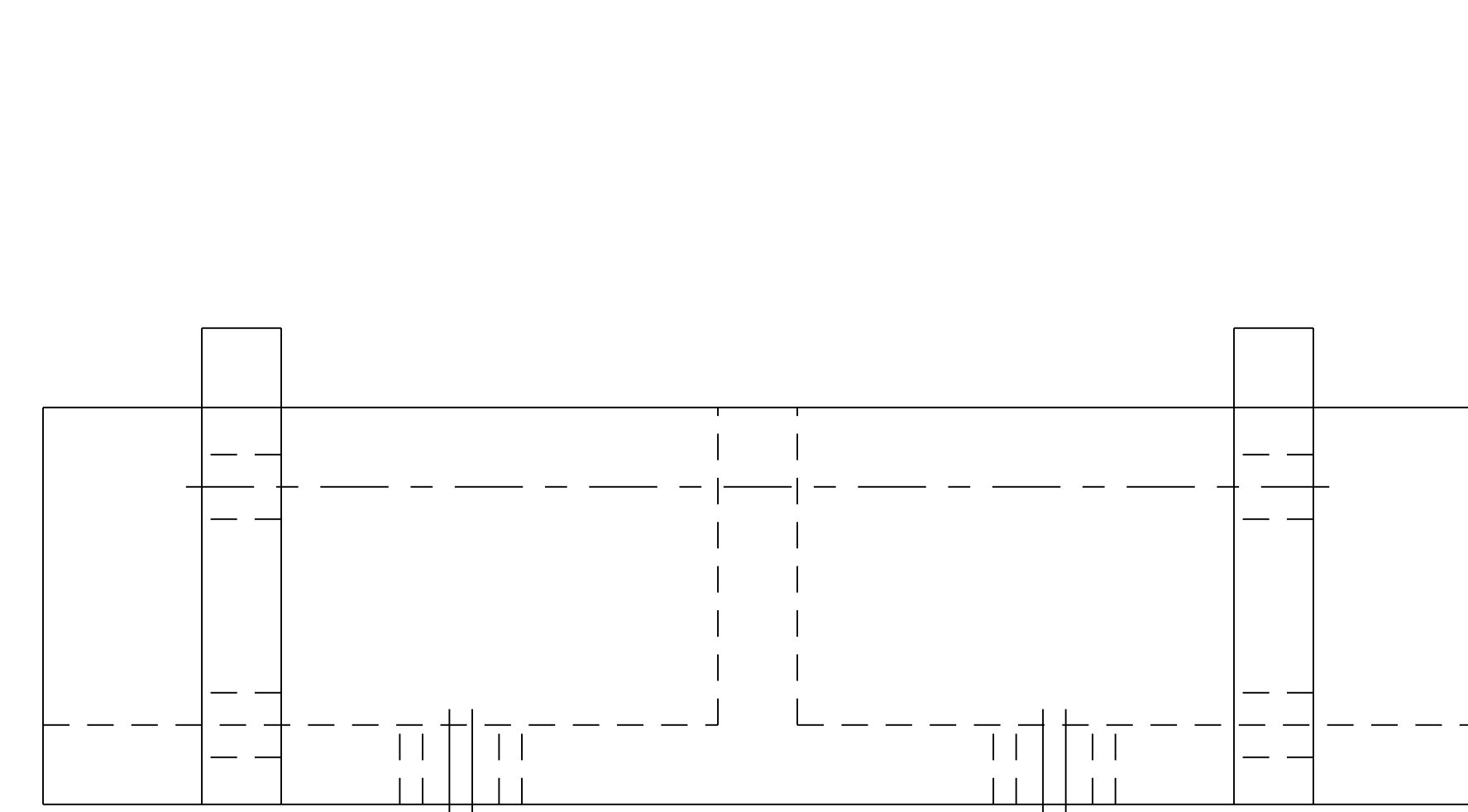
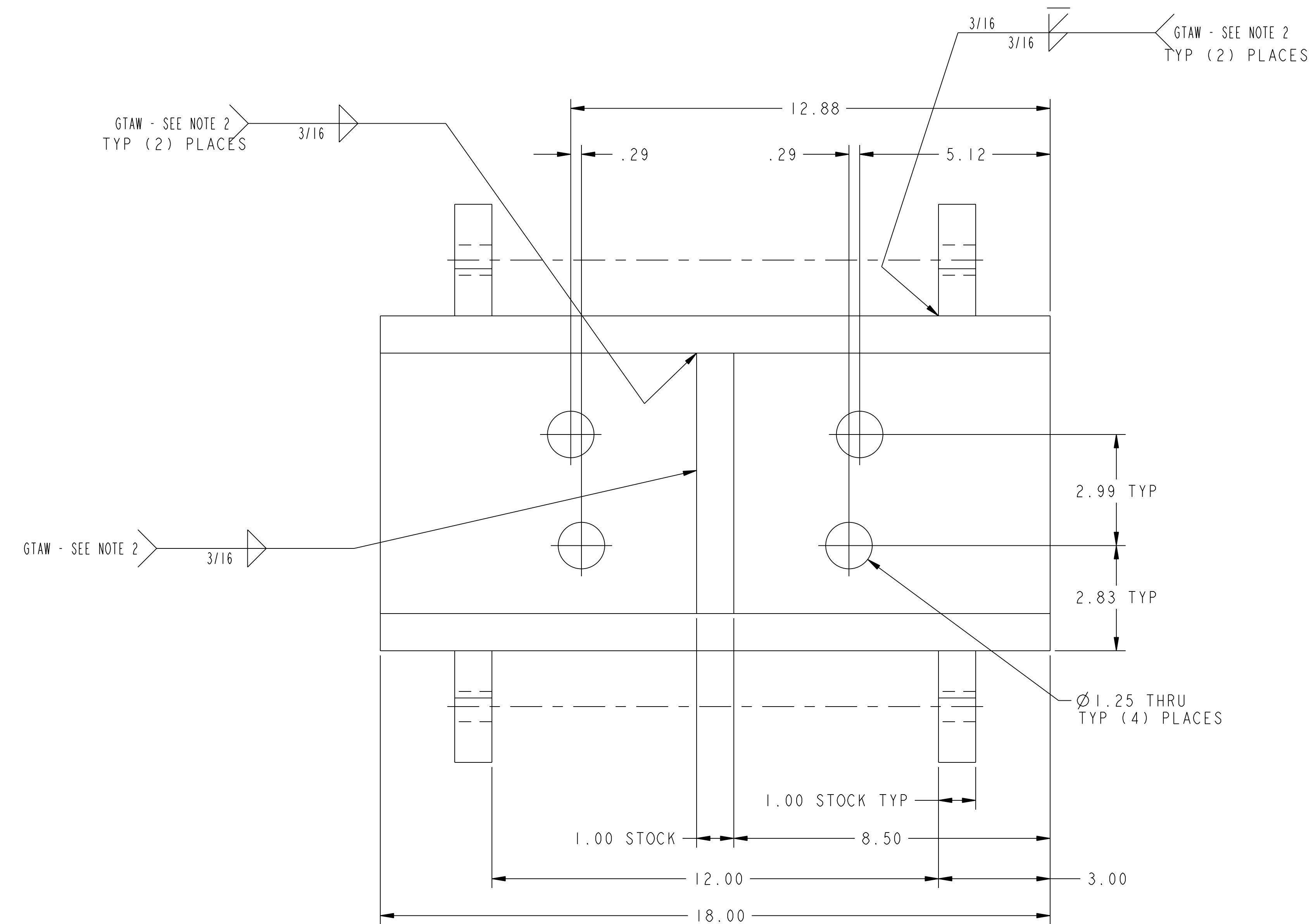
A/R	A/R	I	THIS DWG	1" THICK PLATE STOCK - SEE NOTE 1	ASTM A36	A/R
			THIS DWG	INNER SUPPORT BRACKET WELDMENT		12
			THIS DWG	OUTER SUPPORT BRACKET WELDMENT		12
02	01	PART	DRAWING NO.	NOMENCLATURE OR DESCRIPTION	MATERIAL	QTY REOD

**PARTS LIST**

WEIGHT	COMPUTER GENERATED DRAWING	CENTRAL FILES:	PRINCETON PLASMA PHYSICS LABORATORY		
	153.2 lbs	MANUAL CHANGES NOT PERMITTED	PRINCETON UNIVERSITY		
MODEL NAME	Pro E	UNLESS OTHERWISE SPECIFIED	NATIONAL COMPACT STELLARATOR EXPERIMENT		
SEI144-057-01	DO NOT VERIFY INFORMATION BY SCALING DRAWING	DIMENSIONS ARE IN INCHES MACHINE SURFACES	MODULAR COIL ASSEMBLY WINDING RING ASSEMBLY		
RELEASE LEVEL:	DO NOT VERIFY INFORMATION BY SCALING DRAWING	BREAK SHARP EDGES .005/.020	TYPE "C" WINDING FORM SUPPORT BRACKET WELDMENTS		
DWG VERSION NO:	NEXT ASSEMBLY	TOLERANCES NON-CUMULATIVE	DSN: L. MORRIS	7-21-04	DRAWING NO:
	WELDING ENGINEER R. PARSELLS 7-21-04	DECIMAL-INCH FRACTIONS	CHK: S. RAFTOPOULOS	7-21-04	<b>SEI144-057</b>
		ANGULAR ±.15° OVER 120° ±.12°	ENGR: J. CHRZANOWSKI	7-21-04	SHEET 1 OF 2
			SUPV: J. SIEGEL	7-21-04	REV 0

NCSX-SE144-057

NO.	REVISION	BY	CH	SUP	APPROVED	DATE



02 ASSEMBLY INNER SUPPORT BRACKET WELDMENT

**RELEASED FOR  
FABRICATION / INSTALLATION**  
PPPL Drafting:

FOR NOTES AND B/M SEE SHEET 1

**RELEASE LEVEL: Fabrication**  
**DWG VERSION NO: 1**

WEIGHT	153.2 lbs
MODEL NAME	SE144-057-01
WELDING ENGINEER	R. PARSELLS 7-21-04

COMPUTER GENERATED DRAWING MANUAL CHANGES NOT PERMITTED Pro E	CENTRAL FILES: UNLESS OTHERWISE SPECIFIED	PRINCETON PLASMA PHYSICS LABORATORY PRINCETON UNIVERSITY	
DO NOT VERIFY INFORMATION BY SCALING DRAWING	DIMENSIONS ARE IN INCHES MACHINE SURFACES BREAK SHARP EDGES .005/.020	NATIONAL COMPACT STELLARATOR EXPERIMENT	
NEXT ASSEMBLY	TOLERANCES NON-CUMULATIVE DECIMAL-INCH FRACTIONS .XX +/- .000 0°-12° +/- .010 .XXX +/- .005 12°-120° +/- .010 ANGULAR +/- 0°-15° OVER 120° +/- .125	DSN: L. MORRIS 7-21-04	DRAWING NO: SE144-057
		CHK: S. RAFTOPOULOS 7-21-04	MODULAR COIL ASSEMBLY WINDING RING ASSEMBLY TYPE "C" WINDING FORM SUPPORT BRACKET WELDMENTS
		ENGR: J. CHRZANOWSKI 7-21-04	SHEET 2 OF 2
		SUPV: J. SIEGEL 7-21-04	REV 0