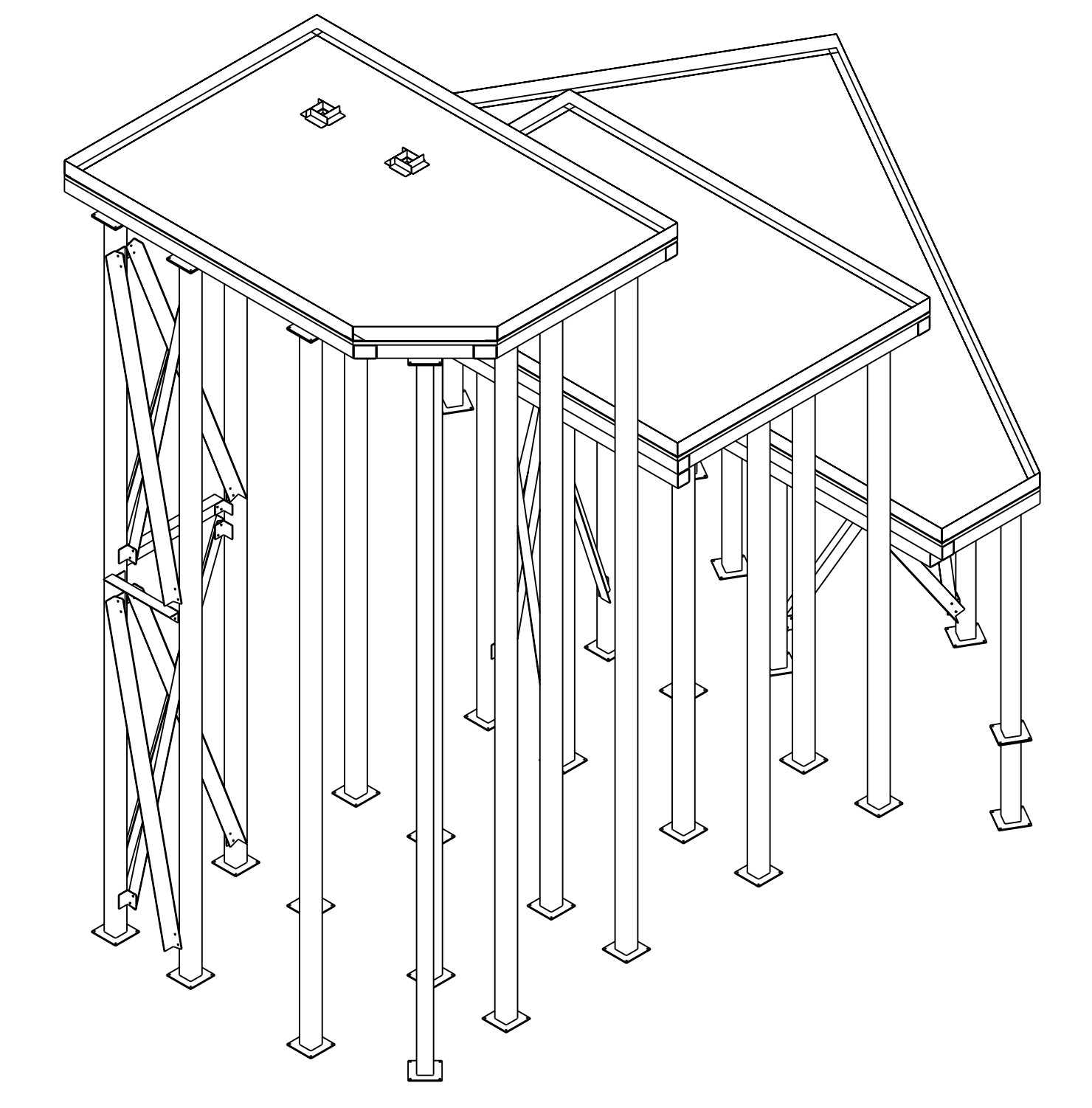
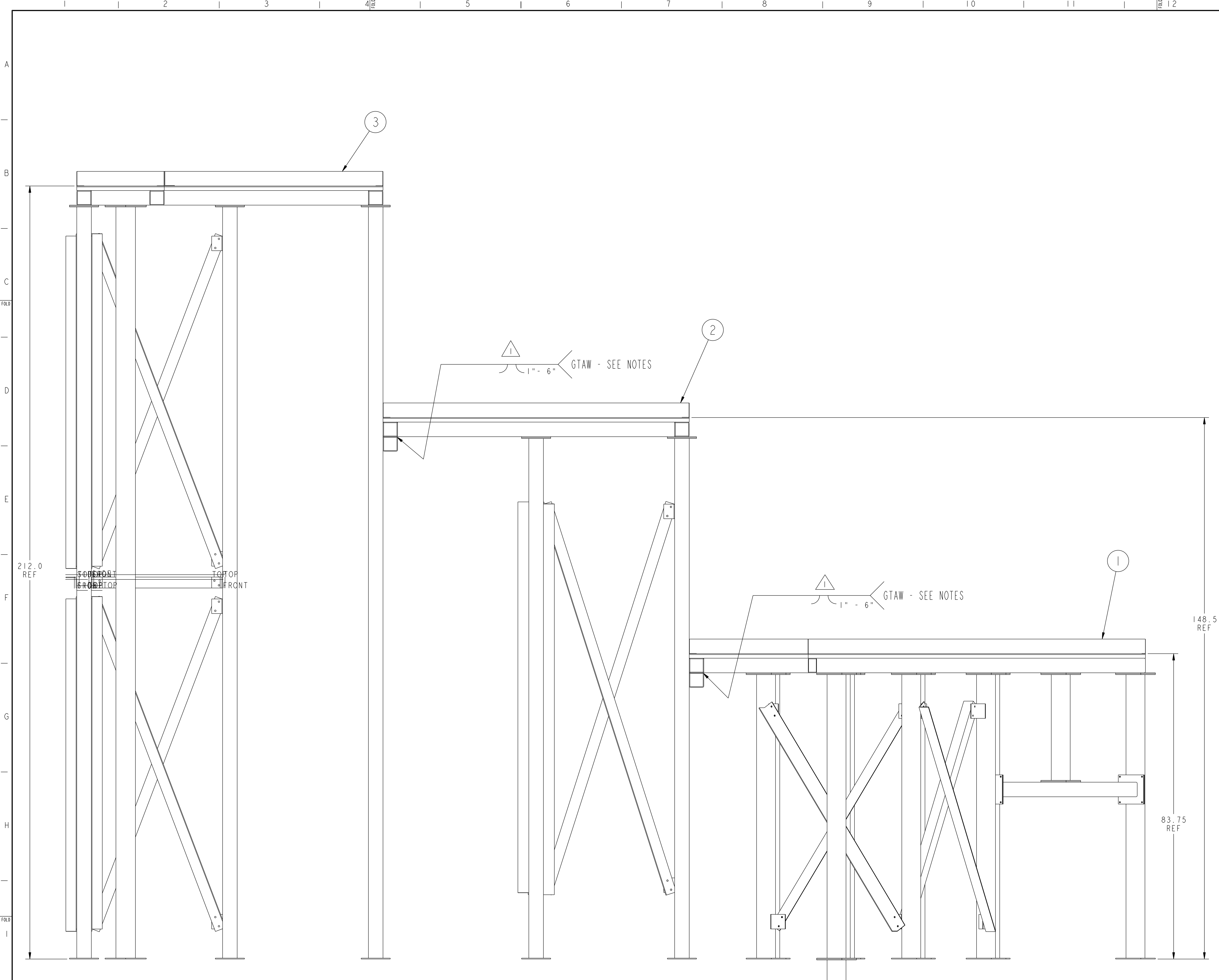


NO.	REVISION	BY	CH	SUP	APPROVED	DATE
1	REVISED PER ECN-4853	LM	SR	JS	S. RAFTOPOULOS	4-21-04



**NOTE**

1. WELDING SHALL BE PERFORMED IN ACCORDANCE WITH THE REQUIREMENTS OF AWS D1.1 Section 6 AND PPPL PROCEDURE EM-002. VISUAL WELD INSPECTION SHALL BE PERFORMED IN ACCORDANCE WITH THE ACCEPTANCE CRITERIA OF AWS D1.1 Section 6.
2. THESE WELDS TO BE PERFORMED AFTER FINAL POSITION OF PLATFORM TOWERS ON WINDING FACILITY PEDESTAL IS DETERMINED. SEE DRAWING SEI44-100 FOR ADDITIONAL LOCATING INFORMATION.

**RELEASED FOR FABRICATION / INSTALLATION**  
PPPL Drafting:

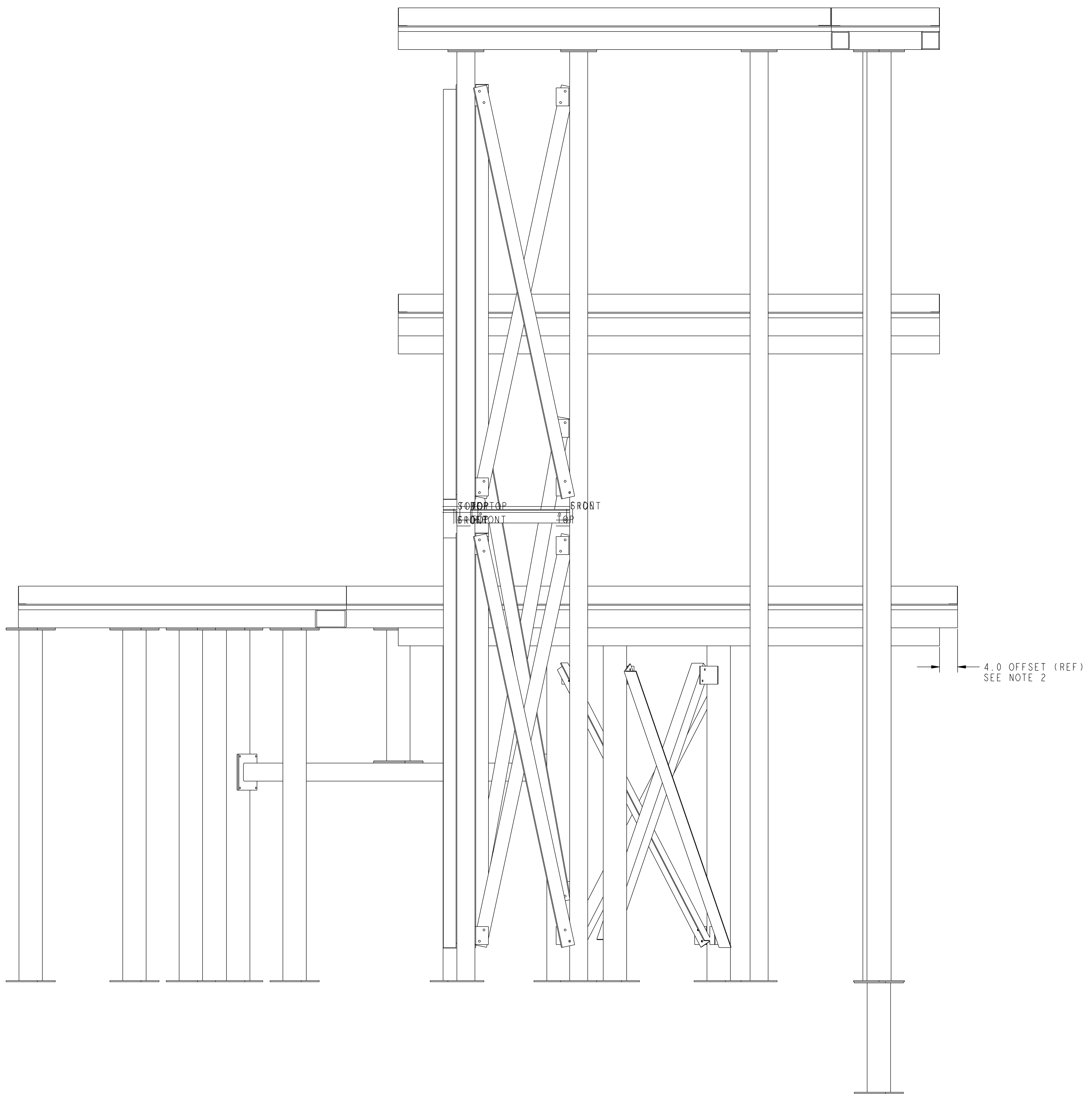
QTY	PART NO.	DRAWING NO.	NOMENCLATURE OR DESCRIPTION	MATERIAL	QTY RECD
1	3	SEI44-105	PLATFORM TOWER ASSEMBLY - UPPER PLATFORM	SEE DWG	---
1	2	SEI44-104	PLATFORM TOWER ASSEMBLY - MIDDLE PLATFORM	SEE DWG	---
1	1	SEI44-103	PLATFORM TOWER ASSEMBLY - LOWER PLATFORM	SEE DWG	---
---	---	---	THIS DWG	---	---
---	---	---	PLATFORM TOWERS WELDMNT	---	---

COMPUTER GENERATED DRAWING MANUAL CHANGES NOT PERMITTED		CENTRAL FILES:	PRINCETON PLASMA PHYSICS LABORATORY	
Pro E		UNLESS OTHERWISE SPECIFIED	<b>NATIONAL COMPACT STELLARATOR EXPERIMENT</b>	
DO NOT VERIFY INFORMATION BY SCALING DRAWING		DIMENSIONS ARE IN INCHES MACHINE SURFACES	MODULAR COIL WINDING FACILITY VPI SUPPORT STAND PLATFORM TOWERS WELDMNT	
NEXT ASSEMBLY		TOLERANCES NON-CUMULATIVE	DSN: L. MORRIS	DRAWING NO:
WEIGHT 8338.8 lbs		DECIMAL-INCH FRACTIONS	CHK: S. RAFTOPOULOS	<b>SEI44-102</b>
MODEL NAME SEI44-102		.XX +/- .030 .XXX +/- .005 ANGULAR +/- .05	ENGR: S. RAFTOPOULOS	SHEET 1 OF 2
WELDING ENGINEER R. PARSELLS 4-21-04		0"-.125 +/- .010 .125"-.250 +/- .010 .250"-.500 +/- .010 .500"-.750 +/- .010 .750"-.120" +/- .010 OVER .120" +/- .010	SUPV: J. SIEGEL	REV 1

**RELEASE LEVEL: Fabrication**  
**DWG VERSION NO: 0**

NCSX-SEI44-102

NO.	REVISION	BY	CH	SUP	APPROVED	DATE



**RELEASED FOR  
FABRICATION / INSTALLATION**

PPPL Drafting:

FOR NOTES AND BILL OF MATERIAL SEE SHEET 1

**RELEASE LEVEL: Fabrication**  
**DWG VERSION NO: 0**

COMPUTER GENERATED DRAWING MANUAL CHANGES NOT PERMITTED Pro E	CENTRAL FILES:	PRINCETON PLASMA PHYSICS LABORATORY PRINCETON UNIVERSITY	
	UNLESS OTHERWISE SPECIFIED	<b>NATIONAL COMPACT STELLARATOR EXPERIMENT</b>	
DO NOT VERIFY INFORMATION BY SCALING DRAWING	DIMENSIONS ARE IN INCHES MACHINE SURFACES	MODULAR COIL WINDING FACILITY VPI SUPPORT STAND PLATFORM TOWERS WELDMENT	
NEXT ASSEMBLY	TOLERANCES NON-CUMULATIVE	DSN: L. MORRIS	DRAWING NO:
	DECIMAL - INCH FRACTIONS	CHK: S. RAFTOPOULOS	<b>SE144-102</b>
WEIGHT 8338.8 lbs	.XX +/- .030 .XXX +/- .005 ANGULAR +/- .0°-15'	ENGR: S. RAFTOPOULOS	SHEET 2 OF 2
MODEL NAME SE144-102		SUPV: J. SIEGEL	REV 1
WELDING ENGINEER			