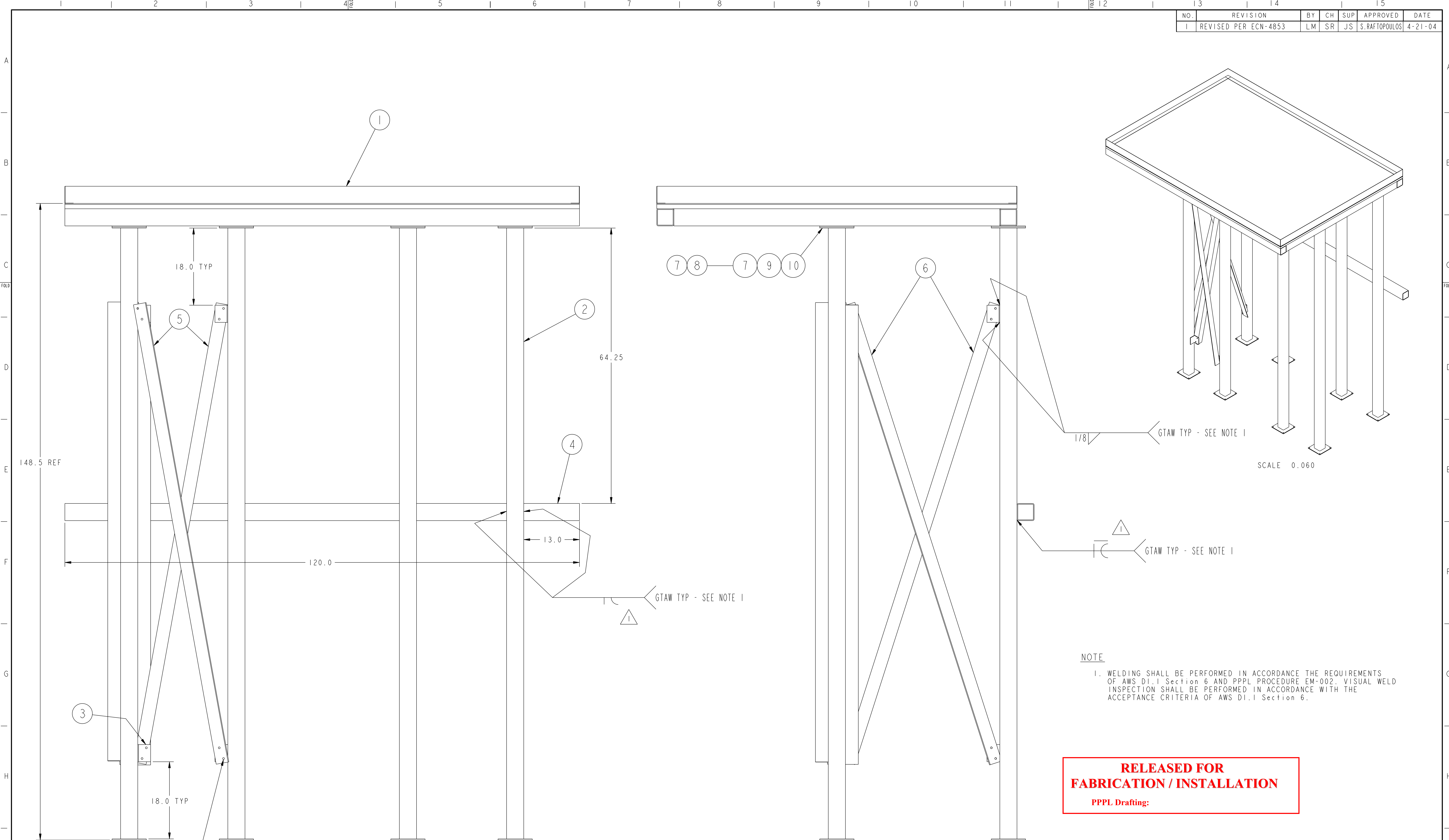


NO.	REVISION	BY	CH	SUP	APPROVED	DATE
1	REVISED PER ECN-4853	LM	SR	JS	S. RAFTOPOULOS	4-21-04



NOTE
 1. WELDING SHALL BE PERFORMED IN ACCORDANCE THE REQUIREMENTS OF AWS D1.1 Section 6 AND PPPL PROCEDURE EM-002. VISUAL WELD INSPECTION SHALL BE PERFORMED IN ACCORDANCE WITH THE ACCEPTANCE CRITERIA OF AWS D1.1 Section 6.

RELEASED FOR FABRICATION / INSTALLATION
 PPPL Drafting:

40	10	COMM	3/8-16UNC-2B HEX NUT	C' STL - ZN PLT	
40	9	COMM	3/8 SPLIT LOCK WASHER	C' STL - ZN PLT	
40	8	COMM	3/8-16UNC-2A X 1 1/2" LG H.H.C.S.	C' STL - ZN PLT	
80	7	COMM	3/8 NOM FLAT WASHER	C' STL - ZN PLT	
2	6	SE144-110-4	BRACE ANGLE (112 3/8" LG)	SEE DWG	
2	5	SE144-110-5	BRACE ANGLE (109" LG)	SEE DWG	
1	4	THIS DWG	4" X 4" X 3/16" WALL SQ. STRUCT TUBE X 120" LG	ASTM A36	
8	3	SE144-110-1	LEG BRACE CLIP ANGLE	SEE DWG	
8	2	SE144-109-03	SUPPORT LEG WELDMENT - TYPE C	SEE DWG	
1	1	SE144-107	MIDDLE PLATFORM WELDMENT	SEE DWG	
		THIS DWG	PLATFORM TOWER ASSEMBLY - MIDDLE PLATFORM		1

01 ASSY	PART NO.	DRAWING NO.	NOMENCLATURE OR DESCRIPTION	MATERIAL	QTY REQD
PARTS LIST					

COMPUTER GENERATED DRAWING MANUAL CHANGES NOT PERMITTED Pro E	CENTRAL FILES: UNLESS OTHERWISE SPECIFIED DIMENSIONS ARE IN INCHES MACHINE SURFACES BREAK SHARP EDGES .005/.020	PRINCETON PLASMA PHYSICS LABORATORY PRINCETON UNIVERSITY NATIONAL COMPACT STELLARATOR EXPERIMENT MODULAR COIL WINDING FACILITY VPI SUPPORT STAND PLATFORM TOWER ASSEMBLY - MIDDLE PLATFORM	
WEIGHT 8338.8 lbs	DO NOT VERIFY INFORMATION BY SCALING DRAWING	TOLERANCES NON-CUMULATIVE DECIMAL-INCH FRACTIONS .XX +/- .030 .XXX +/- .005 ANGULAR +/- .05	DSN: L. MORRIS CHK: S. RAFTOPOULOS ENGR: S. RAFTOPOULOS SUPV: J. SIEGEL
MODEL NAME SE144-104	WELDING ENGINEER R. PARSELLS 4-21-04	RELEASE LEVEL: Fabrication DWG VERSION NO: 0	DRAWING NO: SE144-104 SHEET 1 OF 1 REV 1

NCSX-SE144-104