

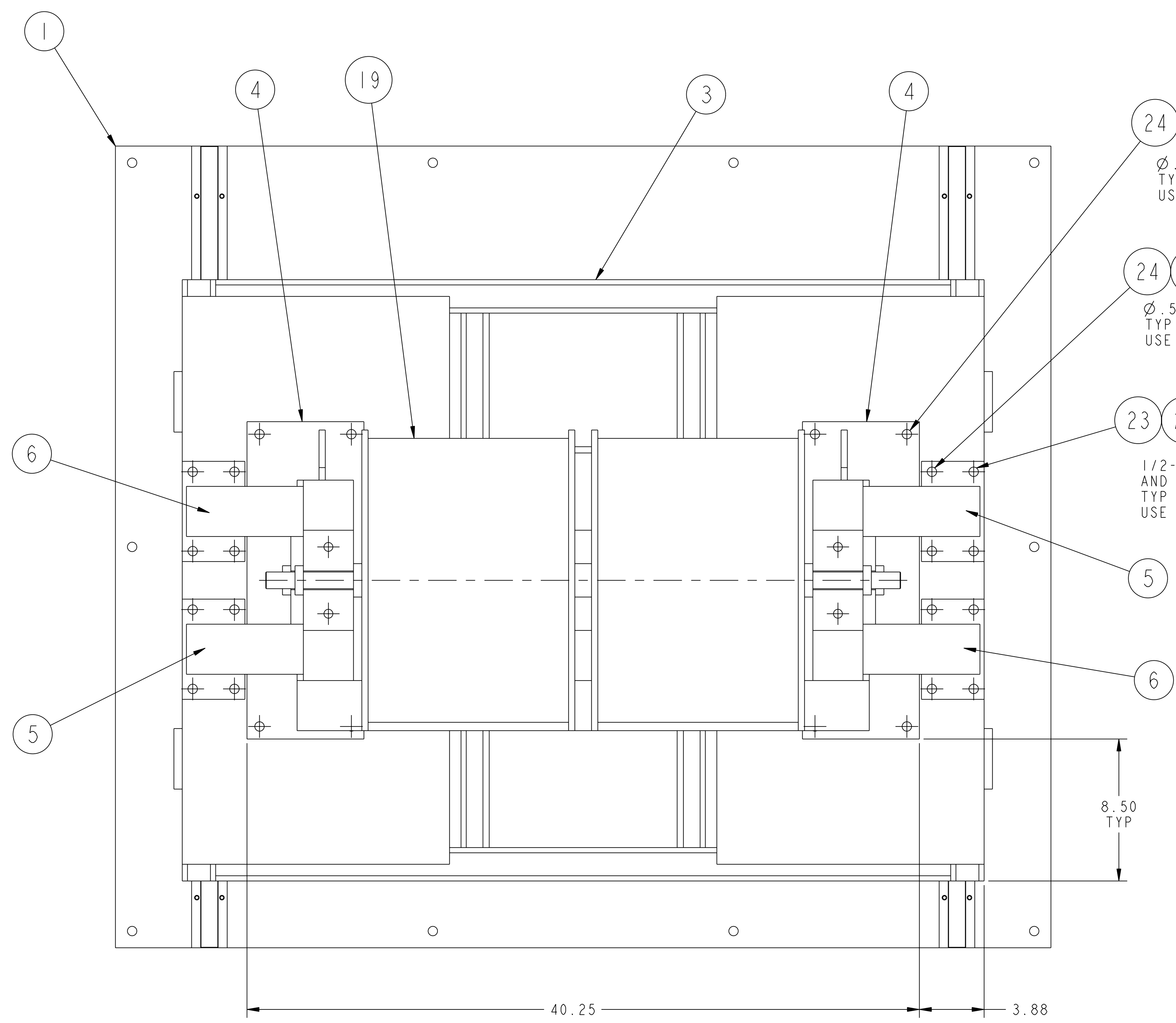
45	28	COMM	1/2-13 UNC-2B HEX NUT	C'STL - ZN PLT		
45	27	COMM	1/2" NOM SPLIT LOCK WASHER	C'STL - ZN PLT		
74	26	COMM	1/2" NOM FLAT WASHER	C'STL - ZN PLT		
8	25	COMM	1/2-13 UNC-2A X 4" LG HEX HD CAP SCREW	C'STL - ZN PLT		
29	24	COMM	1/2-13 UNC-2A X 2" LG HEX HD CAP SCREW	C'STL - ZN PLT		
8	23	COMM	1/2-13 UNC-2A X 1" LG HEX HD CAP SCREW	C'STL - ZN PLT		
4	22	COMM	1" DIA LOCKING COLLAR	C'STL		
1	21	COMM	QUICK RELEASE PIN - 1/2" DIA X 1" LG GRIP	C'STL - ZN PLT		
4	20	COMM	CLEVIS PIN - 3/4" DIA X 2 3/4" LG	1018 C'STL		
4	19	COMM	COPPER WIRE SPOOL	---		
1	18	SE144-130	JACK WELDMENT	SEE DWG		
1	17	SE144-129-10	JACK RETAINING FINGER - TYPE B	SEE DWG		
2	16	SE144-129-9	JACK RETAINING FINGER - TYPE A	SEE DWG		
1	15	SE144-129-8	SUPPORT STAND CONNECTING ANGLE	SEE DWG		
2	14	SE144-129-7	1" DIA SPOOL AXLE	SEE DWG		
2	13	SE144-129-6	SPOOL SPACER - 1 1/4" WIDE	SEE DWG		
2	12	SE144-129-5	SPOOL SPACER - 1" WIDE	SEE DWG		
2	11	SE144-129-4	SPOOL SPACER - 1/2" WIDE	SEE DWG		
4	10	SE144-129-3	SPOOL AXLE SUPPORT BLOCK	SEE DWG		
1	9	SE144-129-01	TURNTABLE RETAINER WELDMENT	SEE DWG		
1	8	SE144-128	TURNTABLE TOP ASSEMBLY	SEE DWG		
1	7	SE144-126-05	JACK BASE CLEVIS TONGUE BRACKET WELDMENT	SEE DWG		
2	6	SE144-125-03	SUPPORT STAND BRACE WELDMENT - OPPOSITE	SEE DWG		
2	5	SE144-125-02	SUPPORT STAND BRACE WELDMENT - AS SHOWN	SEE DWG		
2	4	SE144-125-01	SPOOL SUPPORT STAND WELDMENT	SEE DWG		
1	3	SE144-124	SPOOL PLATFORM WELDMENT	SEE DWG		
1	2	SE144-122	LIFT TABLE MODIFICATION ASSEMBLY	SEE DWG		
1	1	SE144-121	BASE PLATE ASSEMBLY	SEE DWG		
01	PART ASSY	NO.	DRAWING NO.	NOMENCLATURE OR DESCRIPTION	MATERIAL	QTY REQD

RELEASED FOR FABRICATION / INSTALLATION

WEIGHT	2631.1 lbs	MODEL NAME	SE144-120	WELDING ENGINEER	
RELEASE LEVEL:	Fabrication	DWG VERSION NO.:			
COMPUTER GENERATED DRAWING	MANUAL CHANGES NOT PERMITTED	CENTRAL FILES:	UNLESS OTHERWISE SPECIFIED	PRINCETON PLASMA PHYSICS LABORATORY	
DO NOT VERIFY INFORMATION BY SCALING DRAWING		DIMENSIONS ARE IN INCHES	MACHINE SURFACES	NATIONAL COMPACT STELLARATOR EXPERIMENT	
		BREAK SHARP EDGES .005/.020		MODULAR COIL WINDING FACILITY	
		TOLERANCES NON-CUMULATIVE		COPPER SPOOLS MANIPULATOR	
		DECIMAL - INCH FRACTIONS		COPPER SPOOLS MANIPULATOR ASSEMBLY	
		.XX +/- .000	12" - 12" +/- .010	DSN: L. MORRIS	DRAWING NO.:
		.XXX +/- .005	72" - 120" +/- .014	CHK: S. RAFTOPOULOS	SE144-120
		ANGULAR +/- 0° - 15°	OVER 120" +/- .125	ENGR: J. CHRZANOWSKI	
				SUPV: J. SIEGEL	SHEET 1 OF 3
					REV 0

NCSX-SE144-120

NO.	REVISION	BY	CH	SUP	APPROVED	DATE

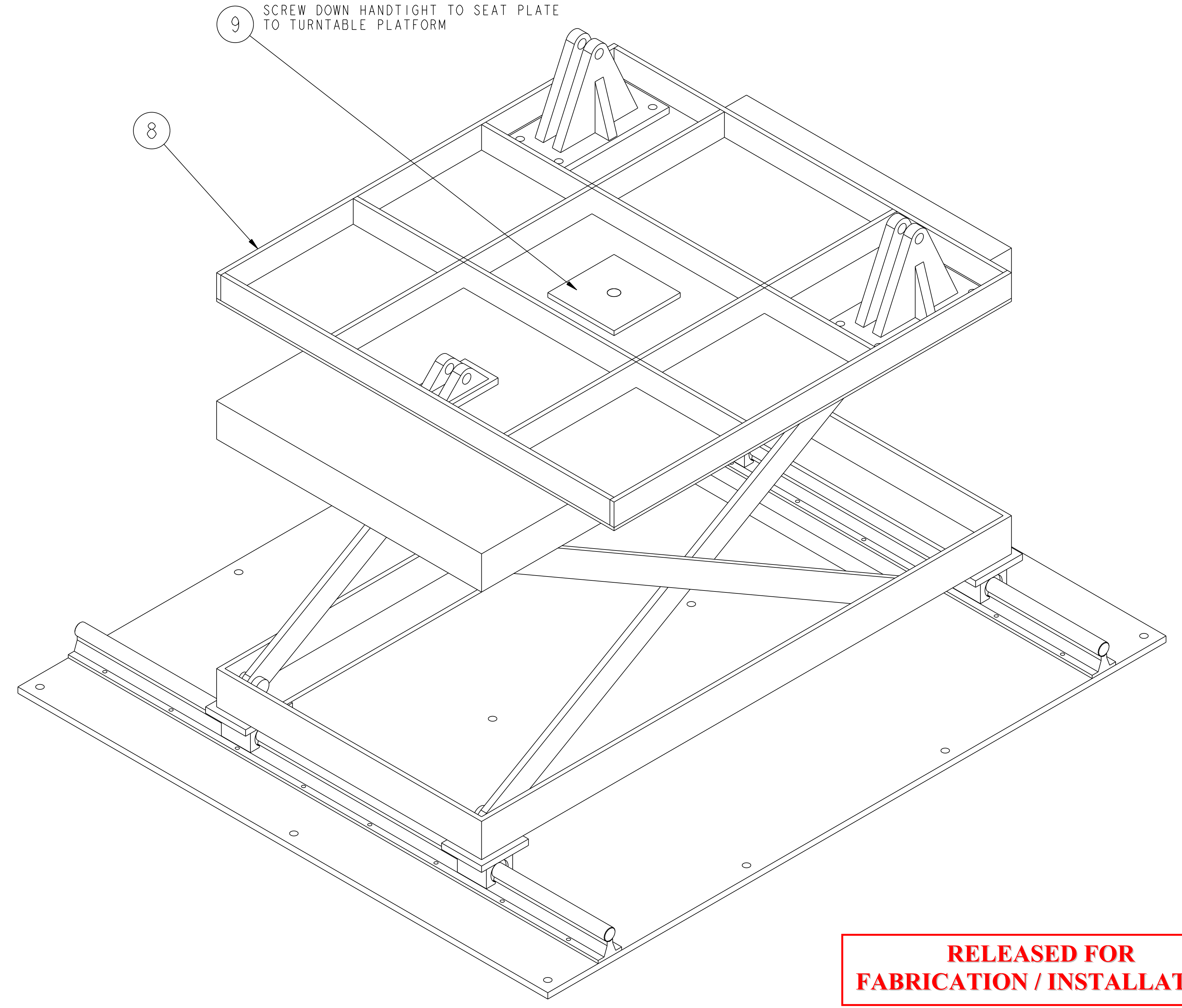


24 26 — 26 27 28  
 Ø.56 THRU PLATFORM TOP PLATE  
 TYP (4) HOLE PATTERN (2) PLACES.  
 USE SUPPORT STAND BASE AS TEMPLATE

24 26 — 26 27 28  
 Ø.56 THRU PLATFORM TOP PLATE  
 TYP (2) HOLE PATTERN (4) PLACES.  
 USE SUPPORT BRACE AS TEMPLATE

23 26 27  
 1/2-13 UNC-2B TAP THRU PLATFORM TOP PLATE  
 AND 2" SQUARE TUBE OF PLATFORM WELDMENT  
 TYP (2) HOLE PATTERN (4) PLACES.  
 USE SUPPORT BRACES AS TEMPLATE

9 SCREW DOWN HANDTIGHT TO SEAT PLATE  
 TO TURNABLE PLATFORM



**RELEASED FOR  
 FABRICATION / INSTALLATION**

FOR NOTES AND BILL OF MATERIAL SEE SHEET 1

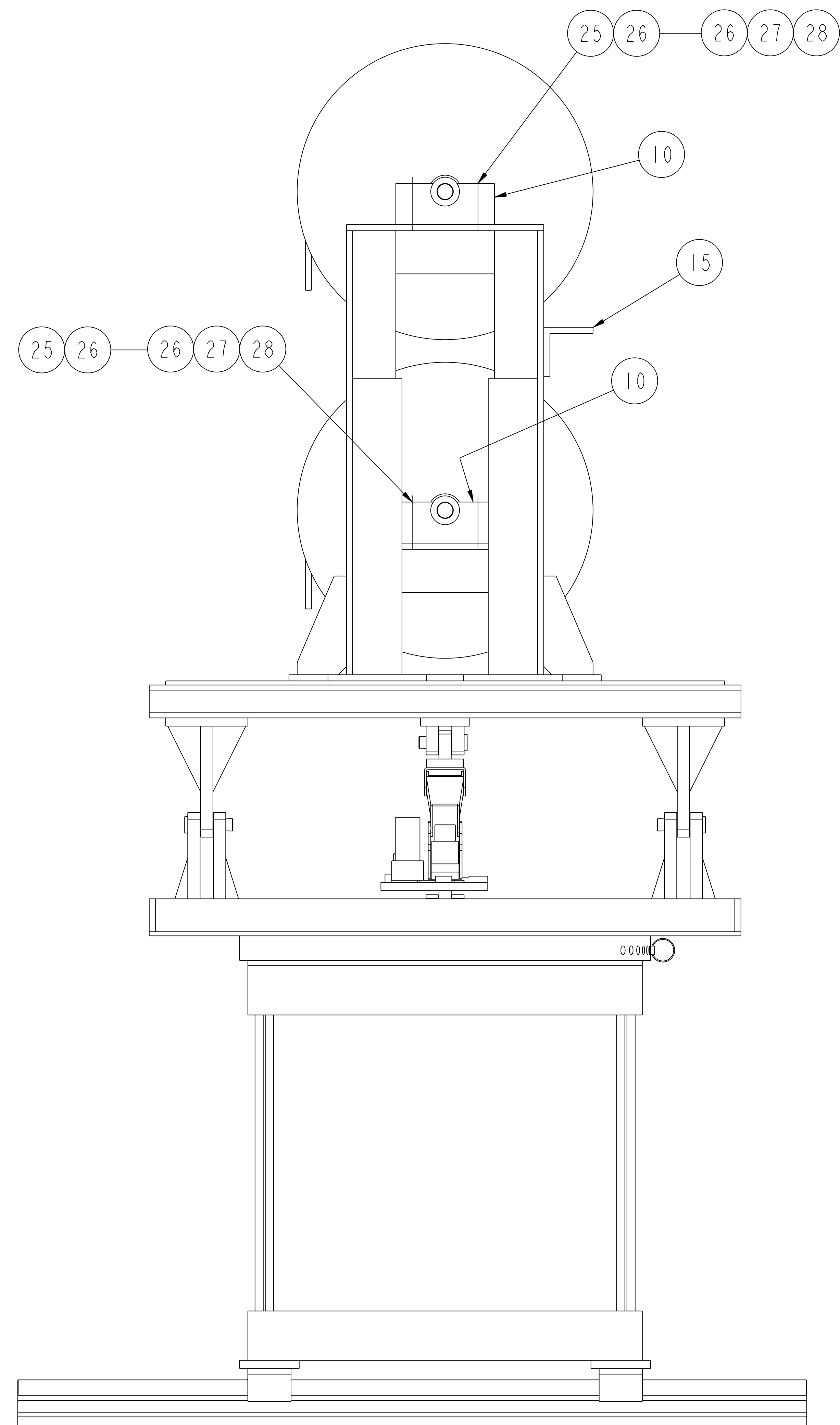
RELEASE LEVEL: Fabrication  
 DWG VERSION NO: 2

WEIGHT  
 2631.1 lbs  
 MODEL NAME  
 SE144-120

COMPUTER GENERATED DRAWING MANUAL CHANGES NOT PERMITTED Pro E	CENTRAL FILES: UNLESS OTHERWISE SPECIFIED DIMENSIONS ARE IN INCHES MACHINE SURFACES BREAK SHARP EDGES .005/.020	PRINCETON PLASMA PHYSICS LABORATORY PRINCETON UNIVERSITY <b>NATIONAL COMPACT STELLARATOR EXPERIMENT</b> MODULAR COIL WINDING FACILITY COPPER SPOOLS MANIPULATOR COPPER SPOOLS MANIPULATOR ASSEMBLY	
DO NOT VERIFY INFORMATION BY SCALING DRAWING	TOLERANCES NON-CUMULATIVE DECIMAL-INCH FRACTIONS .XX ±.000 .XXX ±.005 ANGULAR ±.0°-15°	DSN: L. MORRIS CHK: S. RAFTOPOULOS ENGR: J. CHRZANOWSKI SUPV: J. SIEGEL	DRAWING NO: <b>SE144-120</b> SHEET 2 OF 3 REV 0

NCSX-SE144-120

NO.	REVISION	BY	CH	SUP	APPROVED	DATE



**RELEASED FOR  
FABRICATION / INSTALLATION**

FOR NOTES AND BILL OF MATERIAL SEE SHEET 1

**RELEASE LEVEL: Fabrication  
DWG VERSION NO: 2**

COMPUTER GENERATED DRAWING MANUAL CHANGES NOT PERMITTED Pro E	CENTRAL FILES:	PRINCETON PLASMA PHYSICS LABORATORY PRINCETON UNIVERSITY	
	UNLESS OTHERWISE SPECIFIED	<b>NATIONAL COMPACT STELLARATOR EXPERIMENT</b>	
DO NOT VERIFY INFORMATION BY SCALING DRAWING	DIMENSIONS ARE IN INCHES MACHINE SURFACES	MODULAR COIL WINDING FACILITY COPPER SPOOLS MANIPULATOR COPPER SPOOLS MANIPULATOR ASSEMBLY	
NEXT ASSEMBLY	BREAK SHARP EDGES .005/.020	DSN: L. MORRIS	DRAWING NO:
	TOLERANCES NON-CUMULATIVE	CHK: S. RAFTOPOULOS	<b>SE144-120</b>
	DECIMAL-INCH FRACTIONS	ENGR: J. CHRZANOWSKI	SHEET 3 OF 3
	.XX +/- .000 0°-12° +/- .010	SUPV: J. SIEGEL	REV 0
	.XXX +/- .005 12°-120° +/- .124		
	ANGULAR +/- .0°-15° OVER 120° +/- .124		