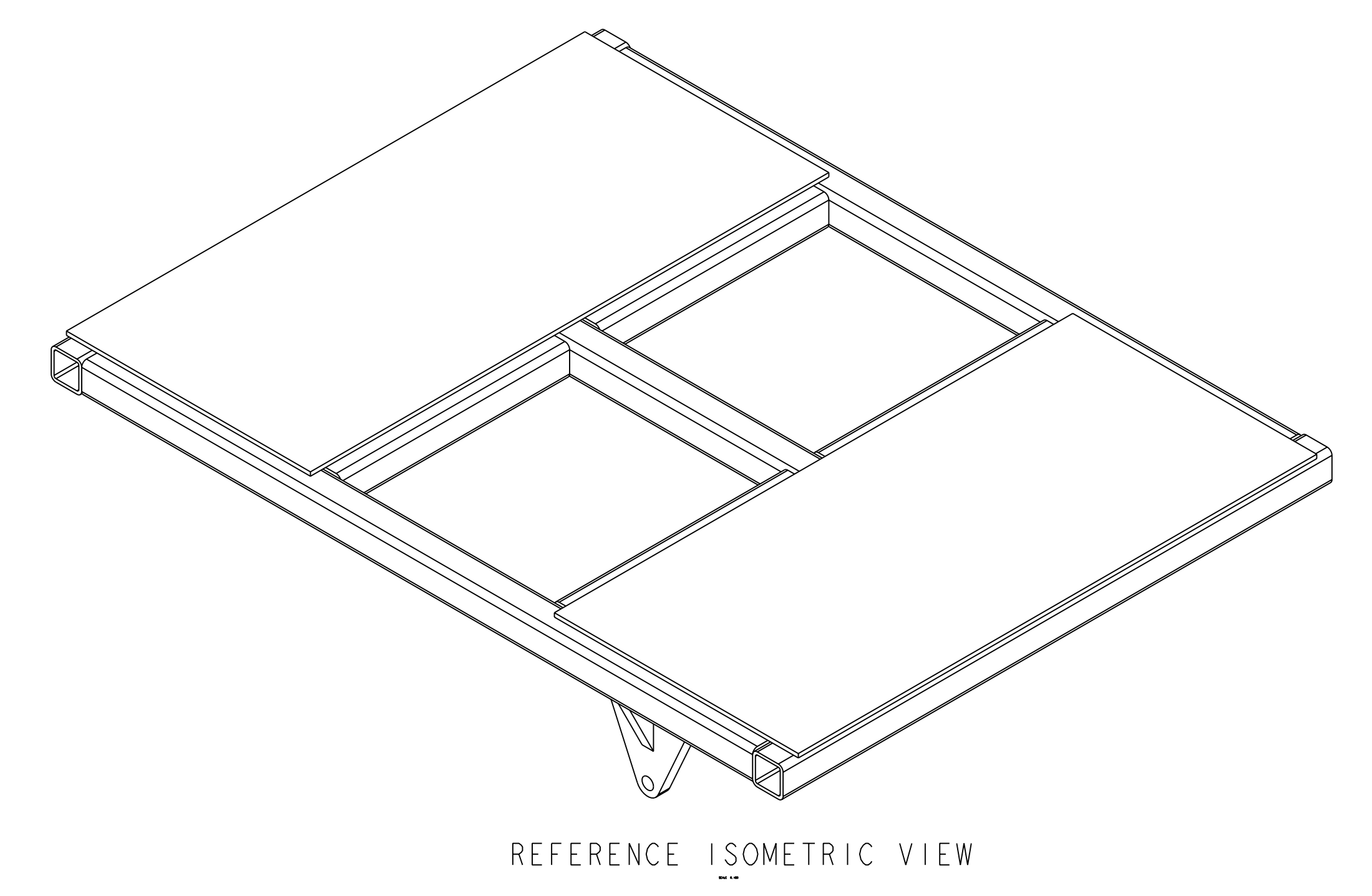
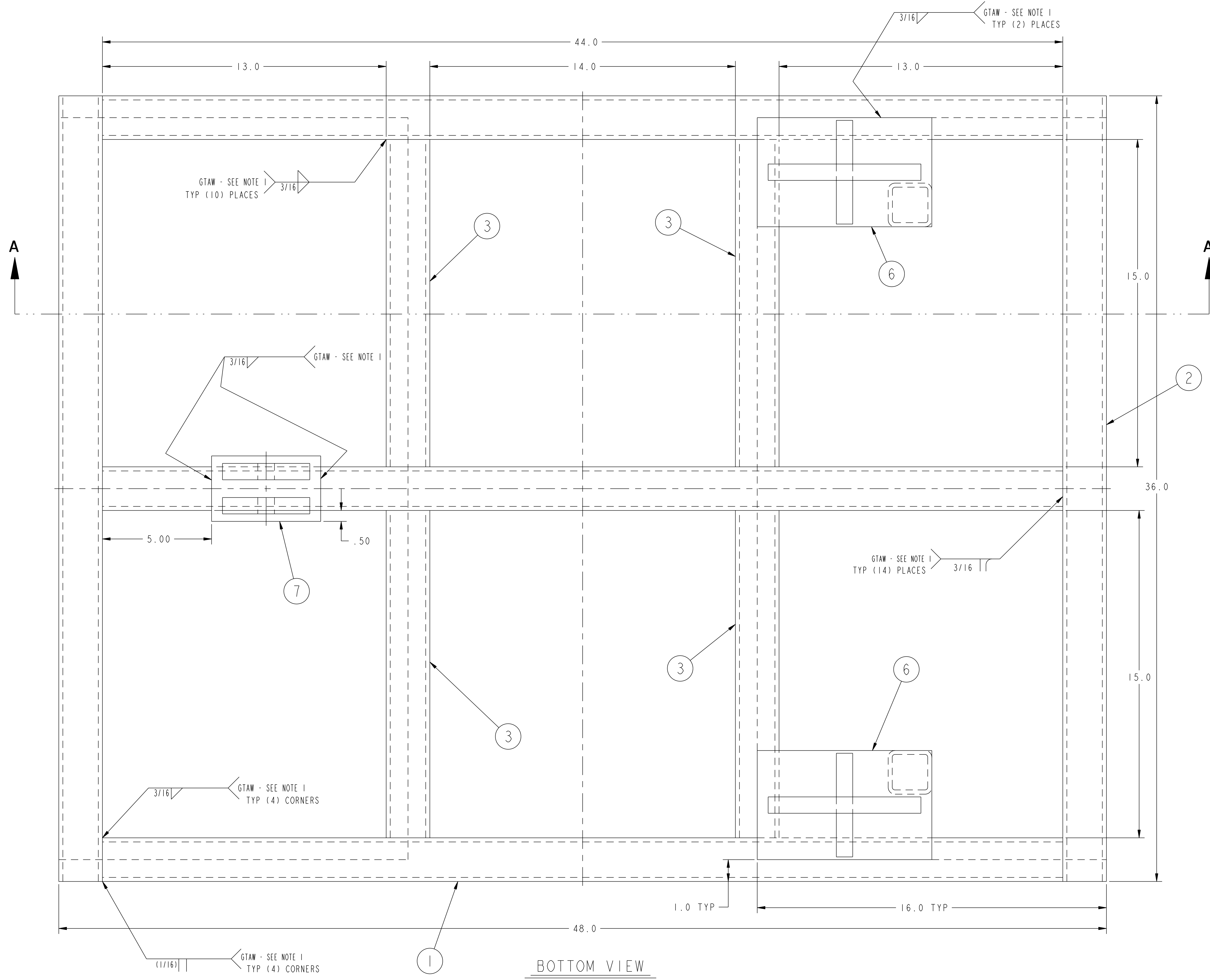


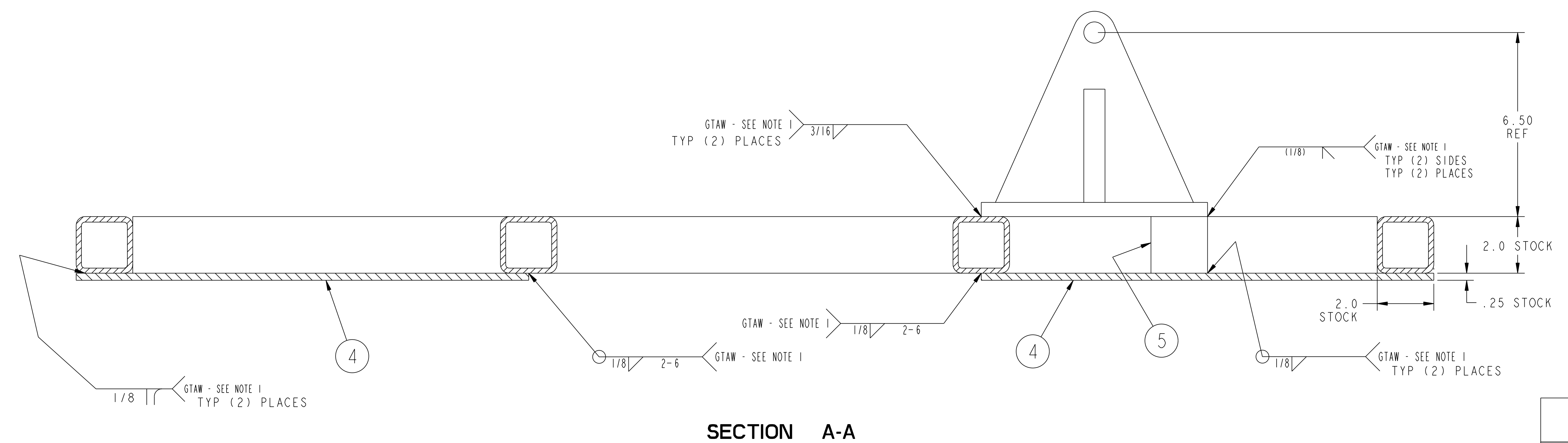
NO.	REVISION	BY	CH	SUP	APPROVED	DATE



NOTES

1. WELDING SHALL BE PERFORMED IN ACCORDANCE WITH THE REQUIREMENTS OF AWS D1.1 SECTION 6 AND PPPL PROCEDURE EM-002. VISUAL WELD INSPECTION SHALL BE PERFORMED IN ACCORDANCE WITH THE ACCEPTANCE CRITERIA OF AWS D1.1 SECTION 6.
2. DISTORTION OF TUBE FRAME AND TOP PLATES, DUE TO WELDING, MUST BE KEPT TO A MINIMUM.

RELEASED FOR FABRICATION / INSTALLATION



SECTION A-A

01	PART ASSY NO.	DRAWING NO.	NOMENCLATURE OR DESCRIPTION	MATERIAL	QTY REQD
1	7	SE144-126-03	PLATFORM CLEVIS TONGUE BRACKET WELDMENT	SEE DWG	
2	6	SE144-126-02	PLATFORM CLEVIS BRACKET WELDMENT	SEE DWG	
2	5	THIS DWG	2 X 2 X 3/16 SQ. STRUCT TUBE X 2" LG	ASTM A36	
2	4	THIS DWG	TOP PLATE	ASTM A569	
4	3	THIS DWG	2 X 2 X 3/16 SQ. STRUCT TUBE X 15" LG	ASTM A36	
2	2	THIS DWG	2 X 2 X 3/16 SQ. STRUCT TUBE X 36" LG	ASTM A36	
3	1	THIS DWG	2 X 2 X 3/16 SQ. STRUCT TUBE X 44" LG	ASTM A36	
3	1	THIS DWG	SPOOL PLATFORM WELDMENT		1

PARTS LIST

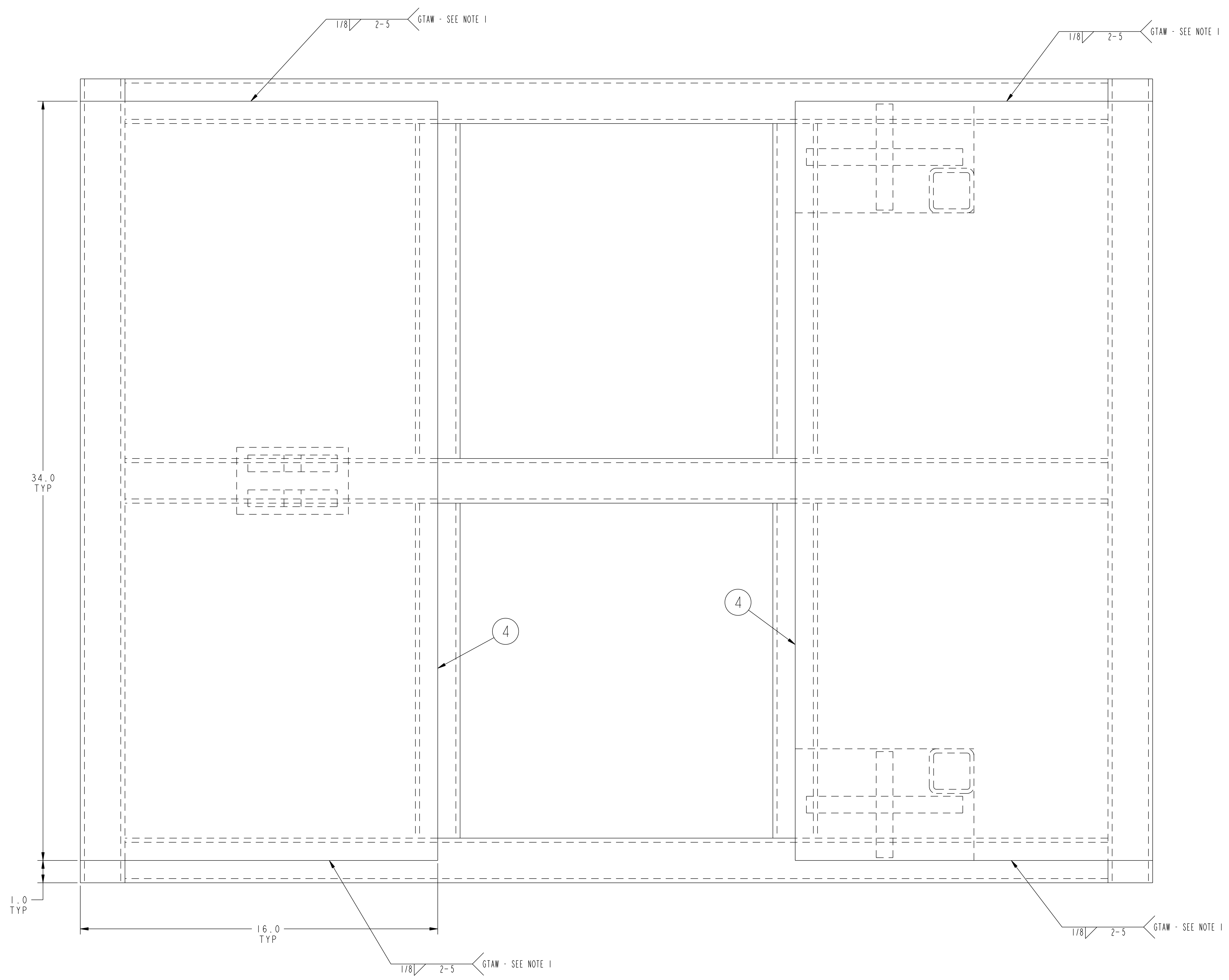
COMPUTER GENERATED DRAWING. MANUAL CHANGES NOT PERMITTED	CENTRAL FILES:	PRINCETON PLASMA PHYSICS LABORATORY	
Pro E	UNLESS OTHERWISE SPECIFIED	NATIONAL COMPACT STELLARATOR EXPERIMENT	
DO NOT VERIFY INFORMATION BY SCALING DRAWING	DIMENSIONS ARE IN INCHES MACHINE SURFACES UNLESS OTHERWISE SPECIFIED	MODULAR COIL WINDING FACILITY	
	BREAK SHARP EDGES .005/.020	COPPER SPOOLS MANIPULATOR	
	TOLERANCES NON-CUMULATIVE	DSN: L. MORRIS	DRAWING NO:
	DECIMAL-INCH FRACTIONS	CHK: S. RAFTOPOULOS	SE144-124
	XX +/- .000 0"-12" +/- .010	ENGR: J. CHRZANOWSKI	
	.XX +/- .005 12"-120" +/- .010	SUPV: J. SIEGEL	SHEET 1 OF 2
	ANGULAR +/- .0-15' OVER 120" +/- .12'		REV 0

RELEASE LEVEL: Fabrication
DWG VERSION NO: 3

WEIGHT	202.1 lbs
MODEL NAME	SE144-124
WELDING ENGINEER	

NCSX-SE144-124

NO.	REVISION	BY	CH	SUP	APPROVED	DATE



TOP VIEW

RELEASED FOR FABRICATION / INSTALLATION

FOR NOTES AND BILL OF MATERIAL SEE SHEET 1

RELEASE LEVEL: Fabrication
DWG VERSION NO: 3

COMPUTER GENERATED DRAWING MANUAL CHANGES NOT PERMITTED Pro E	CENTRAL FILES:	PRINCETON PLASMA PHYSICS LABORATORY NATIONAL COMPACT STELLARATOR EXPERIMENT	
	UNLESS OTHERWISE SPECIFIED	MODULAR COIL WINDING FACILITY COPPER SPOOLS MANIPULATOR SPOOL PLATFORM WELDMENT	
DO NOT VERIFY INFORMATION BY SCALING DRAWING	DIMENSIONS ARE IN INCHES MACHINE SURFACES BREAK SHARP EDGES .005/.020	TOLERANCES NON-CUMULATIVE	DSN: L. MORRIS
NEXT ASSEMBLY	DECIMAL-INCH FRACTIONS .XX +/- .000 0°-120° +/- .010 .XXX +/- .005 120°-120° +/- .010 ANGULAR +/- 0°-15° OVER 120° +/- .112	CHK: S. RAFTOPOULOS ENGR: J. CHRZANOWSKI SUPV: J. SIEGEL	DRAWING NO: SE144-124
WEIGHT 202.1 lbs			SHEET 2 OF 2 REV 0
MODEL NAME SE144-124			
WELDING ENGINEER			

NCSX-SE144-124