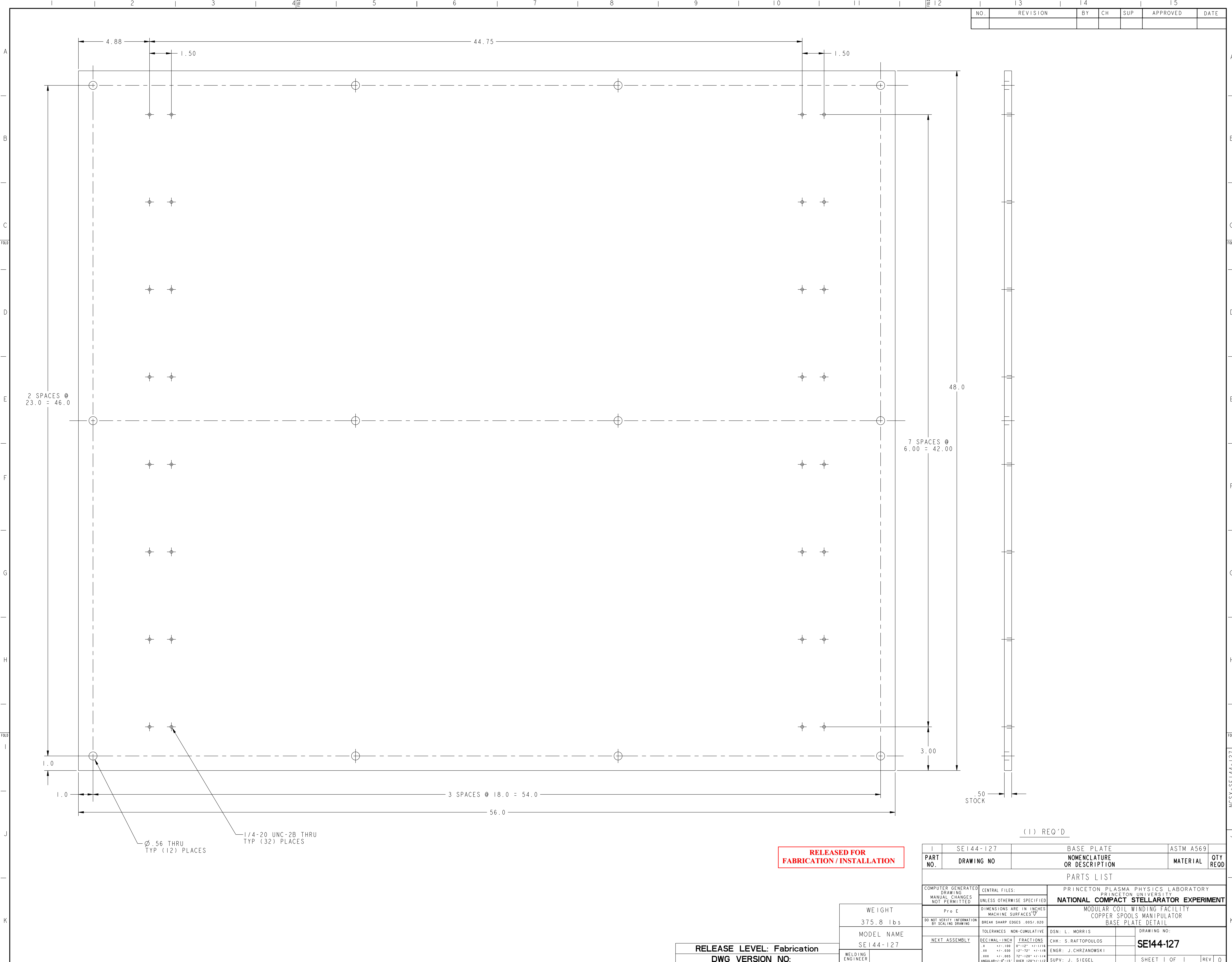


NO.	REVISION	BY	CH	SUP	APPROVED	DATE



2 SPACES @  
23.0 = 46.0

7 SPACES @  
6.00 = 42.00

3 SPACES @ 18.0 = 54.0

56.0

Ø.56 THRU  
TYP (12) PLACES

1/4-20 UNC-2B THRU  
TYP (32) PLACES

48.0

3.00

.50  
STOCK

**RELEASED FOR  
FABRICATION / INSTALLATION**

(1) REQ'D

1	SE144-127	BASE PLATE	ASTM A569	
PART NO.	DRAWING NO	NOMENCLATURE OR DESCRIPTION	MATERIAL	QTY REOD
PARTS LIST				
COMPUTER GENERATED DRAWING MANUAL CHANGES NOT PERMITTED Pro E	CENTRAL FILES: UNLESS OTHERWISE SPECIFIED	PRINCETON PLASMA PHYSICS LABORATORY NATIONAL COMPACT STELLARATOR EXPERIMENT		
DO NOT VERIFY INFORMATION BY SCALING DRAWING	DIMENSIONS ARE IN INCHES MACHINE SURFACES BREAK SHARP EDGES .005/.020	MODULAR COIL WINDING FACILITY COPPER SPOOLS MANIPULATOR BASE PLATE DETAIL		
TOLERANCES NON-CUMULATIVE	DECIMAL-INCH FRACTIONS	DSN: L. MORRIS	DRAWING NO:	
NEXT ASSEMBLY	.XX +/- .030 .XXX +/- .005 ANGULAR +/- 0°15'	12" 12" +/- .120 72" 120" +/- .124 OVER 120" +/- .122	CHK: S. RAFTOPOULOS ENGR: J. CHRZANOWSKI SUPV: J. SIEGEL	SE144-127
			SHEET 1 OF 1	REV 0

WEIGHT  
375.8 lbs

MODEL NAME  
SE144-127

RELEASE LEVEL: Fabrication  
DWG VERSION NO: