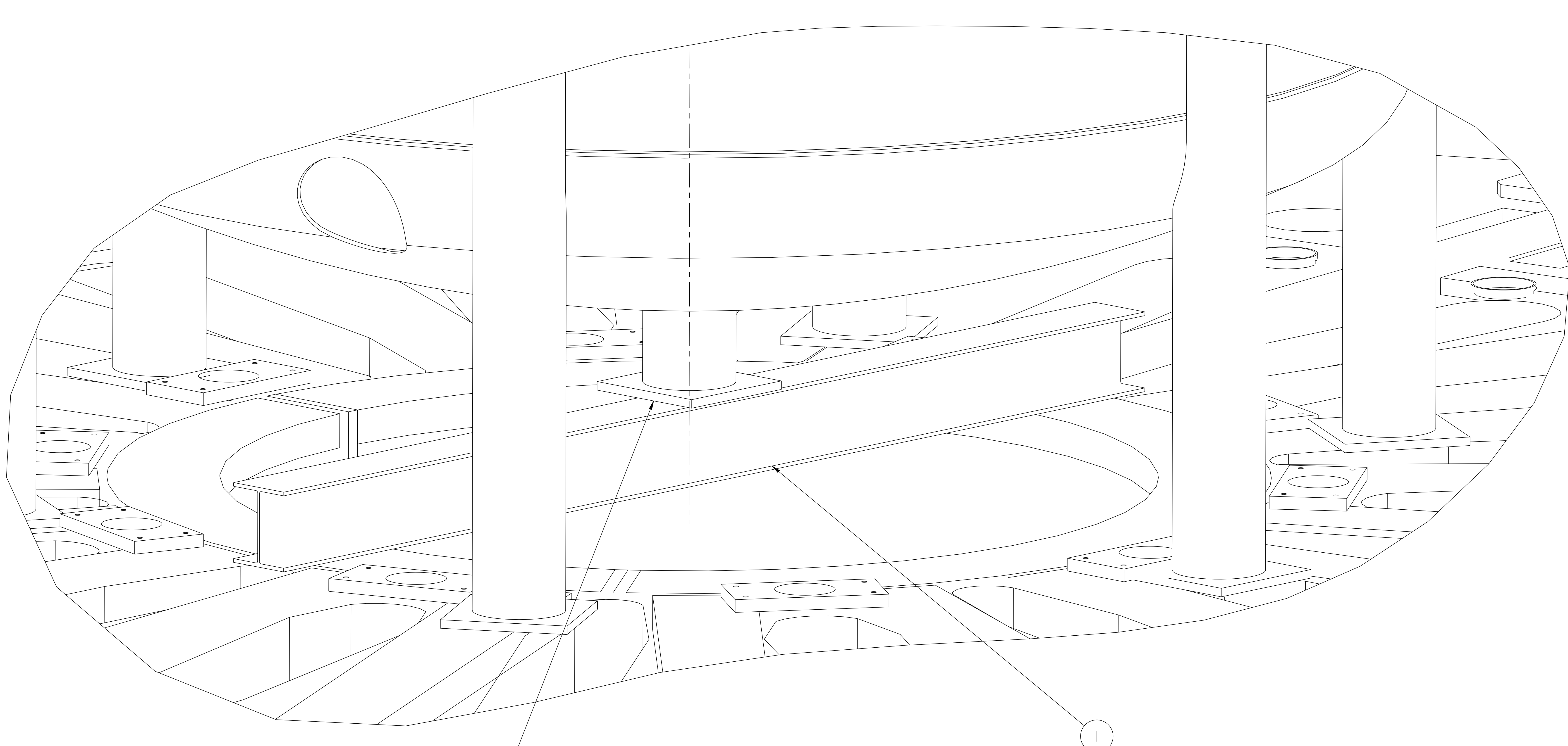


NO.	REVISION	BY	CH	SUP	APPROVED	DATE



AT ASSEMBLY INSTALL 10" X 33.0# X 12'-0" LONG
CARBON STEEL WF BEAM TO BRIDGE OPENING
IN TEST CELL FLOOR

SHIM OR GROUT GAP BETWEEN
CENTER SUPPORT POST ON VESSEL
AND WF SUPPORT BEAM

**RELEASED FOR
FABRICATION / INSTALLATION**

PART NO.	SE144-398	CARBON STEEL I BEAM 10" 33.0#	CARBON STEEL	QTY RECD
	DRAWING NO	NOMENCLATURE OR DESCRIPTION	MATERIAL	
PARTS LIST				
COMPUTER GENERATED DRAWING MANUAL CHANGES NOT PERMITTED	CENTRAL FILES:	PRINCETON PLASMA PHYSICS LABORATORY PRINCETON UNIVERSITY		
Pro E	UNLESS OTHERWISE SPECIFIED	NATIONAL COMPACT STELLARATOR EXPERIMENT		
DO NOT VERIFY INFORMATION BY SCALING DRAWING	DIMENSIONS ARE IN INCHES MACHINE SURFACES	STELLARATOR CORE MODULAR COIL WINDING FACILITY AUTOCLAVE CENTER SUPPORT BEAM INSTALLATION		
	BREAK SHARP EDGES .005/.020	TOLERANCES NON-CUMULATIVE	DSN: J. RUSHINSKI	DRAWING NO:
		DECIMAL-INCH FRACTIONS	CHK: ENGR: S. RAFTOPOULOS	SE144-300
		.XX +/- .030 0"-12" +/- .010	SUPV:	SHEET 4 OF 4
		.XXX +/- .005 12"-120" +/- .010		REV
		ANGULAR +/- .0-15' OVER 120" +/- .172		

RELEASE LEVEL: Fabrication
DWG VERSION NO: 2

WELDING
ENGINEER

NCSX-SE144-300