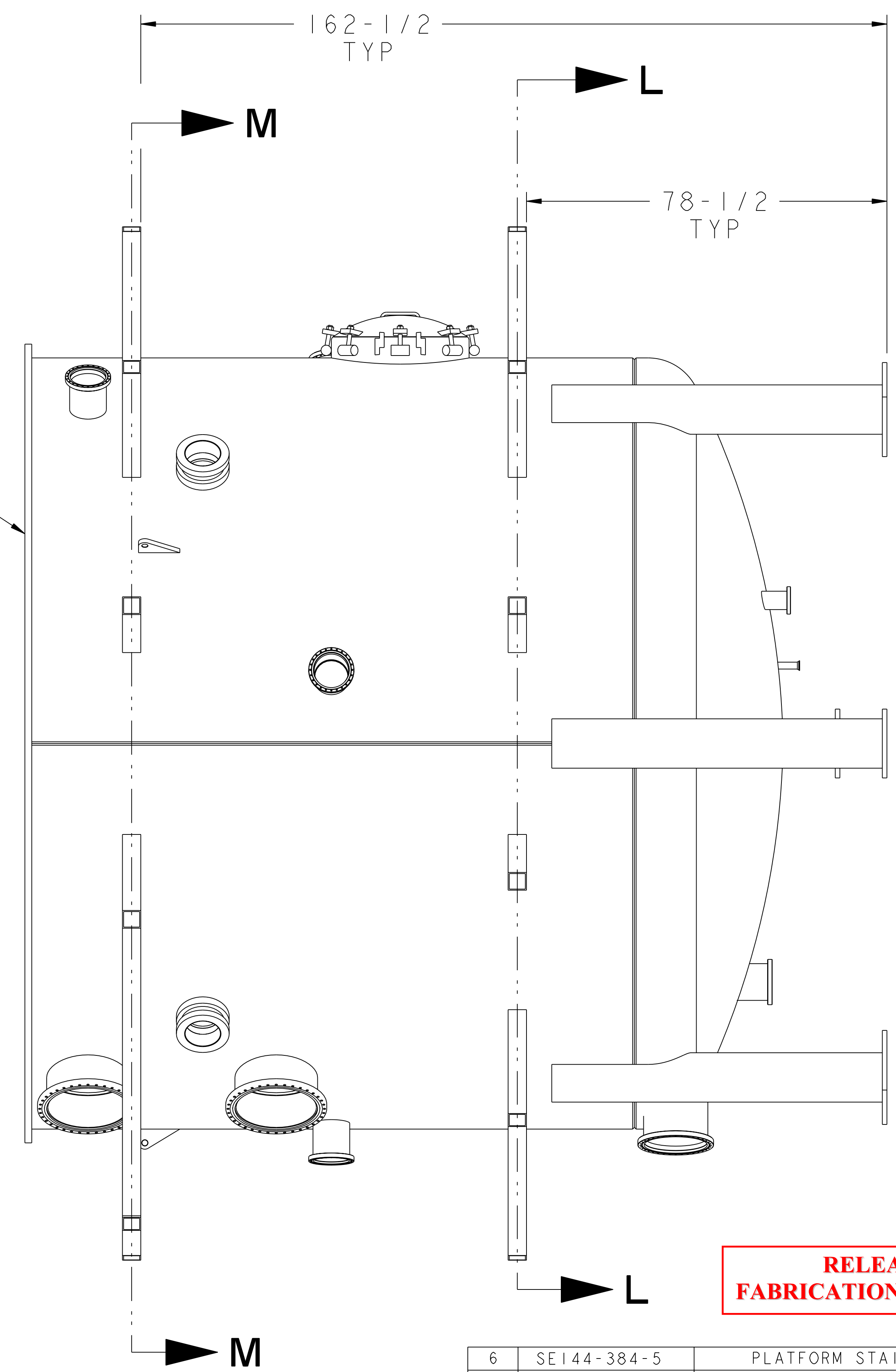
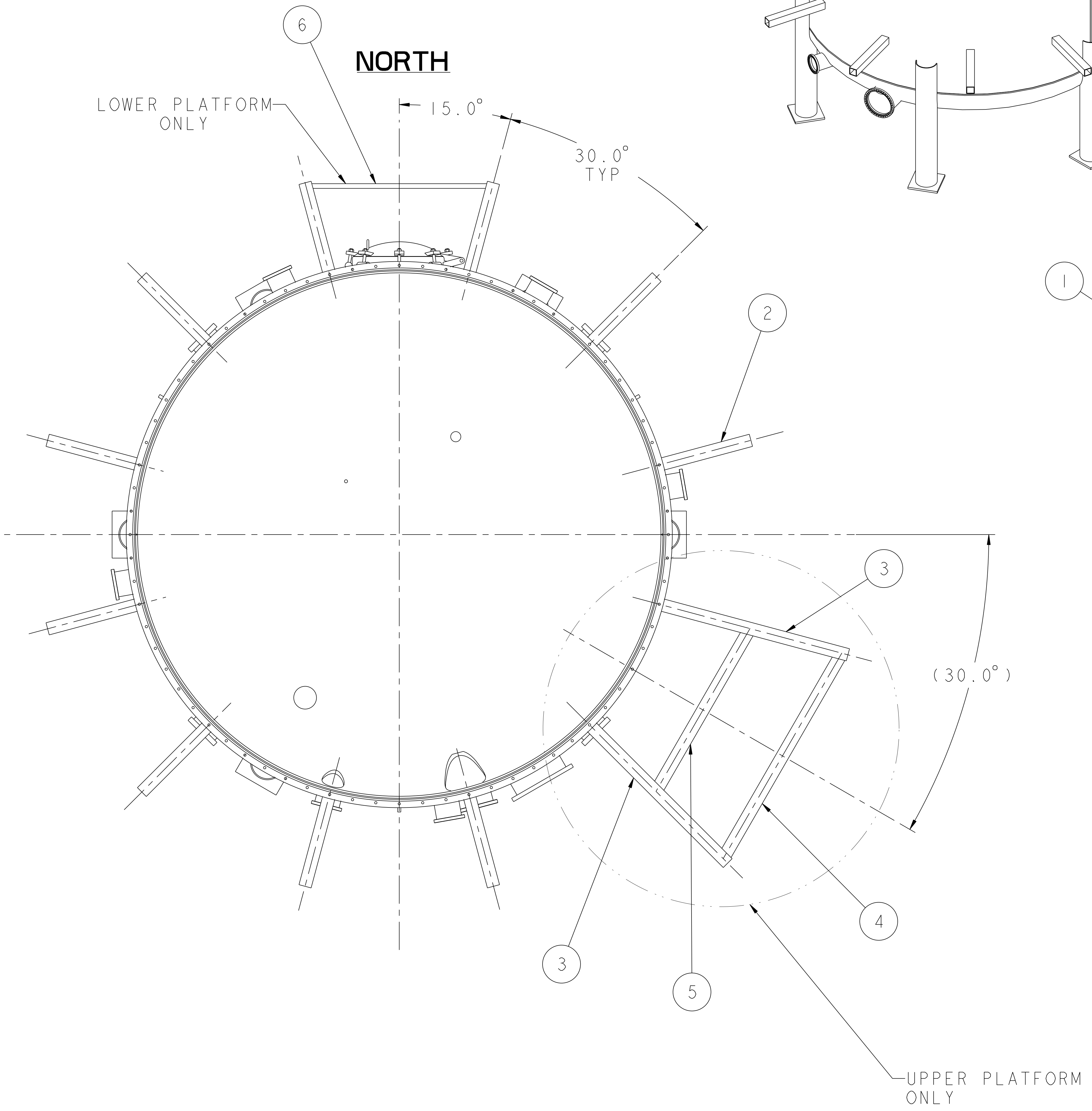
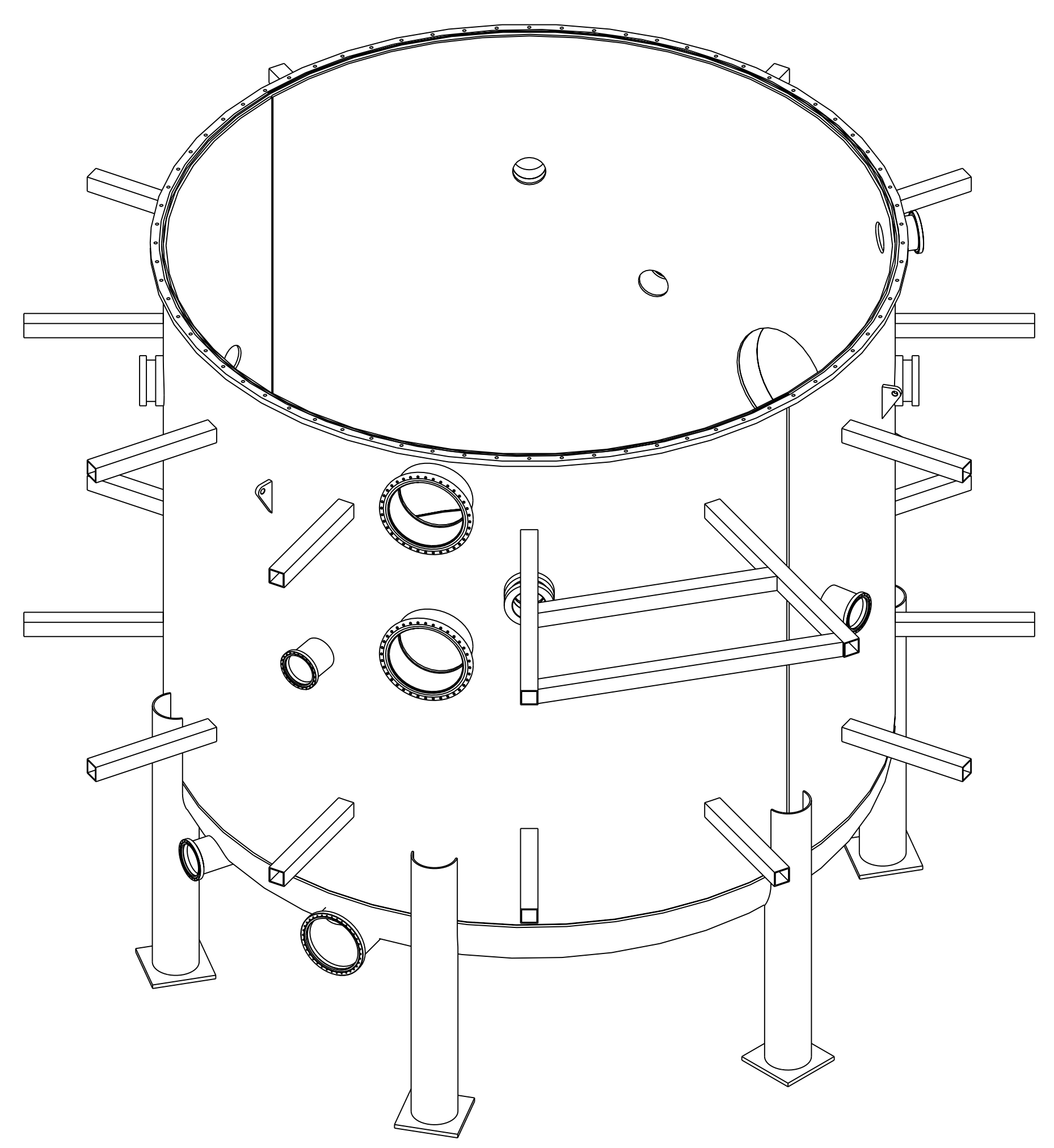


NOTE

1. WELDING SHALL BE PERFORMED IN ACCORDANCE WITH PPPL PROCEDURE EM-002.
2. VISUAL WELD INSPECTION SHALL BE PERFORMED IN ACCORDANCE WITH ACCEPTANCE CRITERIA OF ASME B31.3 CATEGORY "D".
3. NOTE ORIENTATION OF ALL PARTS BEFORE WELDING.



**RELEASED FOR FABRICATION / INSTALLATION**

PART NO.	DRAWING NO	NOMENCLATURE OR DESCRIPTION	MATERIAL	QTY	REOD
6	SE144-384-5	PLATFORM STAIRS CONNECTOR	STN STL	1	
5	SE144-384-3	CROSS BRACE SHORT	STN STL	1	
4	SE144-384-4	CROSS BRACE LONG	STN STL	1	
3	SE144-384-2	RADIAL SUPPORT BEAM LONG	STN STL	2	
2	SE144-384-1	RADIAL SUPPORT BEAM	STN STL	22	
1	SE144-308	VESSEL & PORTS ASSEMBLY	STN STL	1	

COMPUTER GENERATED DRAWING MANUAL CHANGES NOT PERMITTED		CENTRAL FILES:	PRINCETON PLASMA PHYSICS LABORATORY PRINCETON UNIVERSITY	
DO NOT VERIFY INFORMATION BY SCALING DRAWING		UNLESS OTHERWISE SPECIFIED	<b>NATIONAL COMPACT STELLARATOR EXPERIMENT</b>	
SCALE 0.062		DIMENSIONS ARE IN INCHES MACHINE SURFACES	STELLARATOR CORE MODULAR COIL WINDING FACILITY EXTERIOR PLATFORM RADIAL BEAMS WELDING DETAIL	
NEXT ASSEMBLY		TOLERANCES NON-CUMULATIVE	DSN: J. RUSHINSKI	DRAWING NO:
WEIGHT 33834.0 lbs		DECIMAL-INCH FRACTIONS	CHK:	<b>SE144-304</b>
MODEL NAME SE144-304		.XX +/- .030 .XXX +/- .005 ANGULAR +/- .015	ENGR: S. RAFTOPOULOS	SHEET 1 OF 3
RELEASE LEVEL: Fabrication DWG VERSION NO: 01		WELDING ENGINEER	SUPV:	REV 0

NCSX-SE144-304