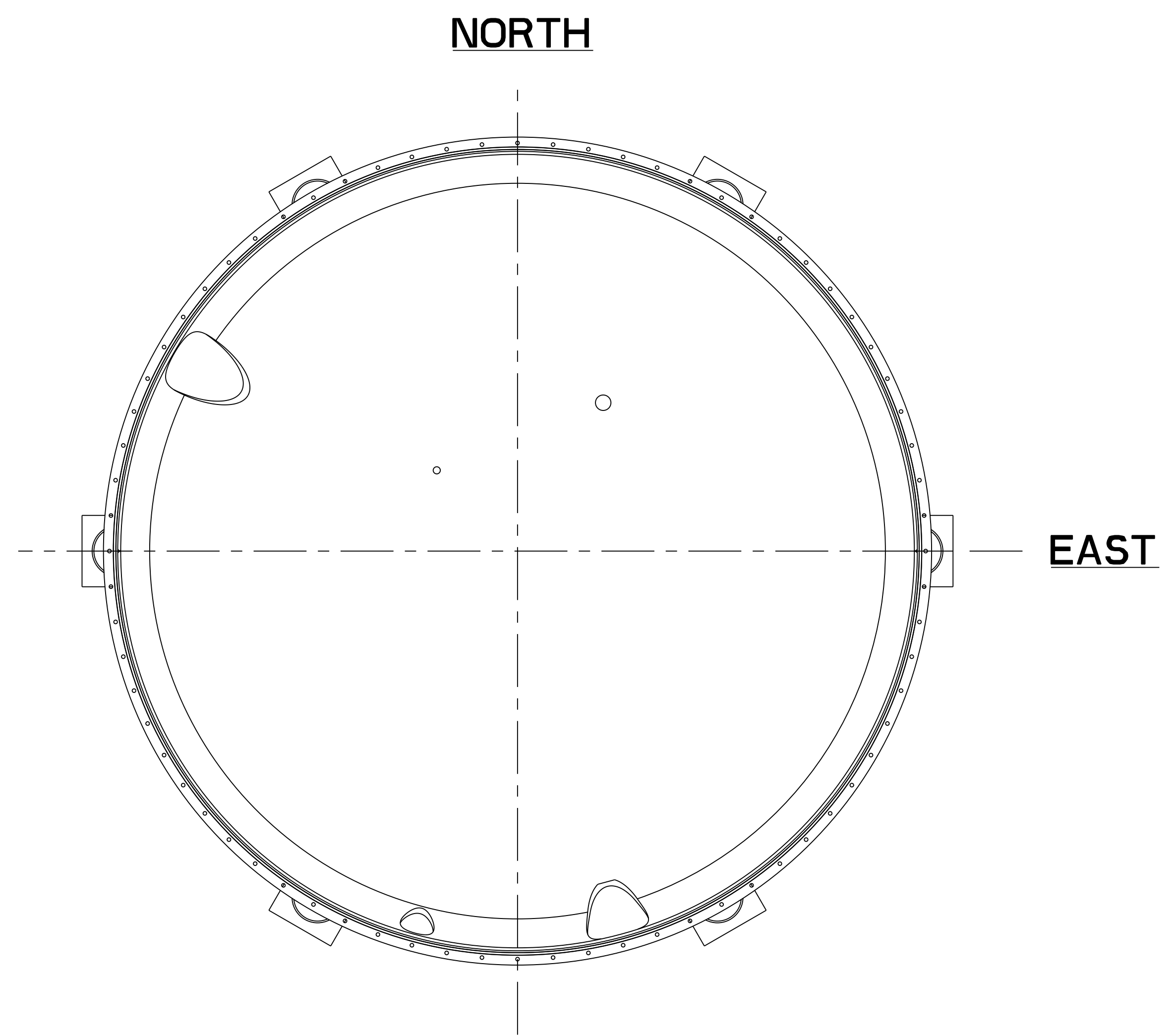
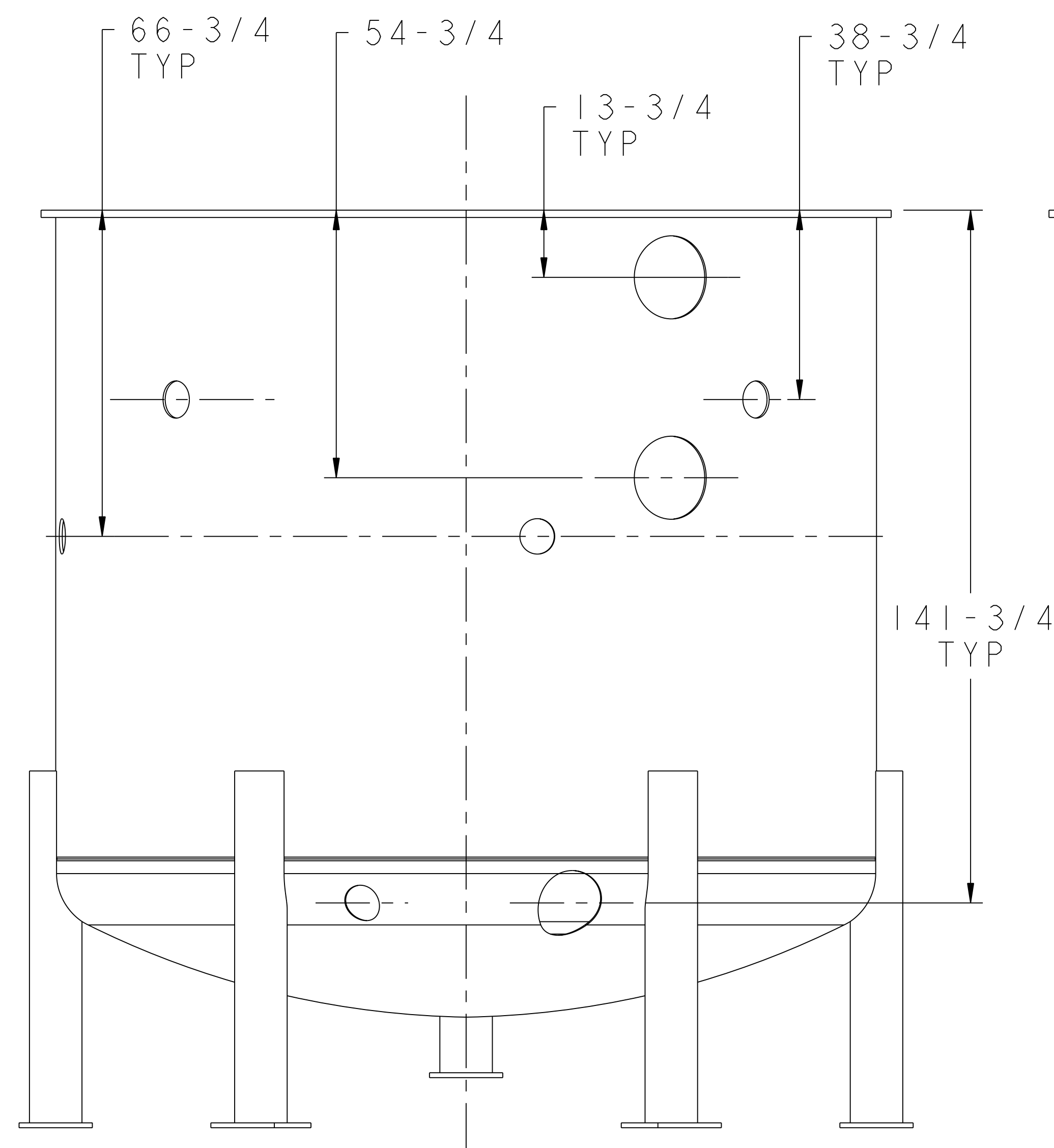
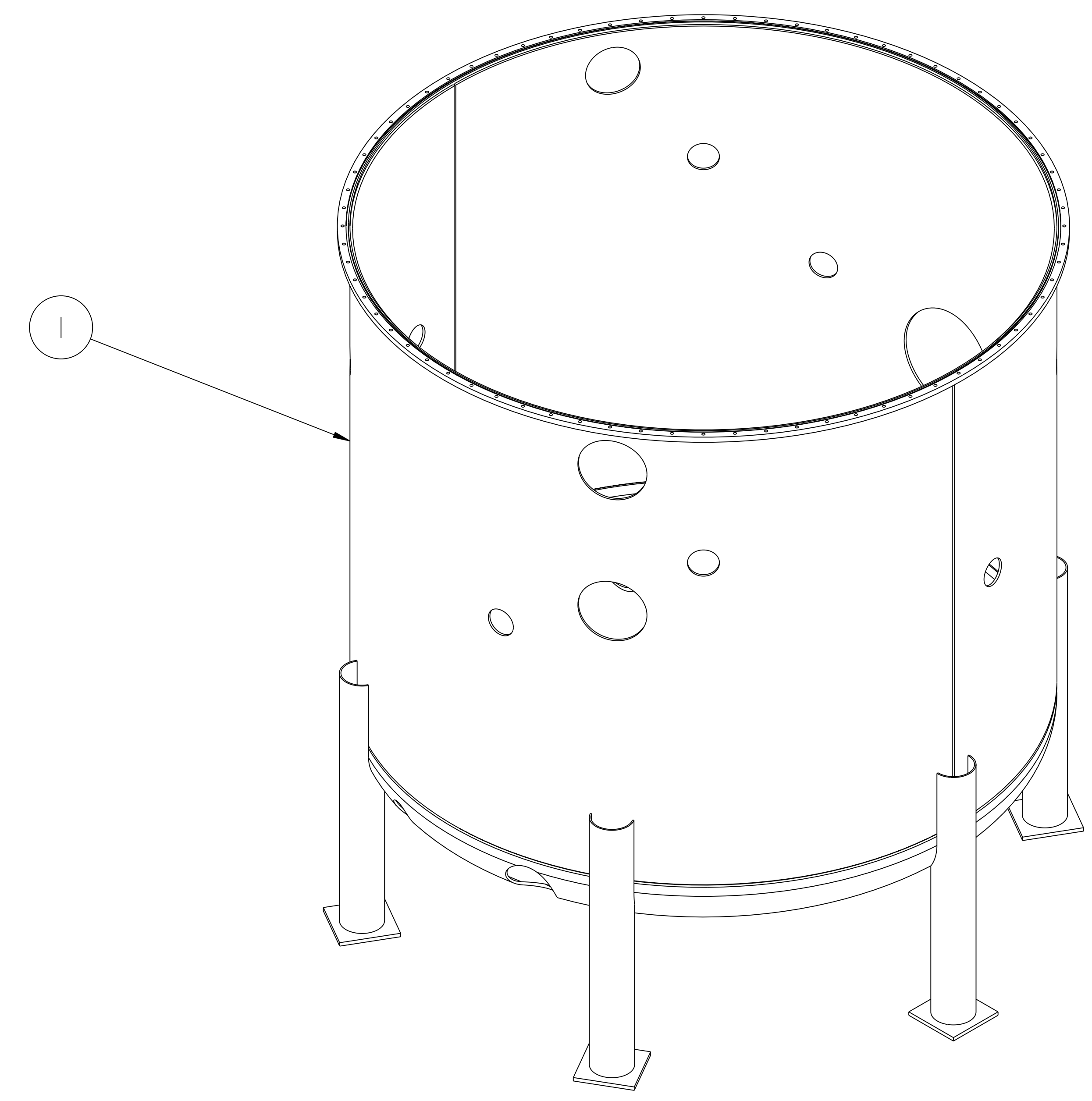


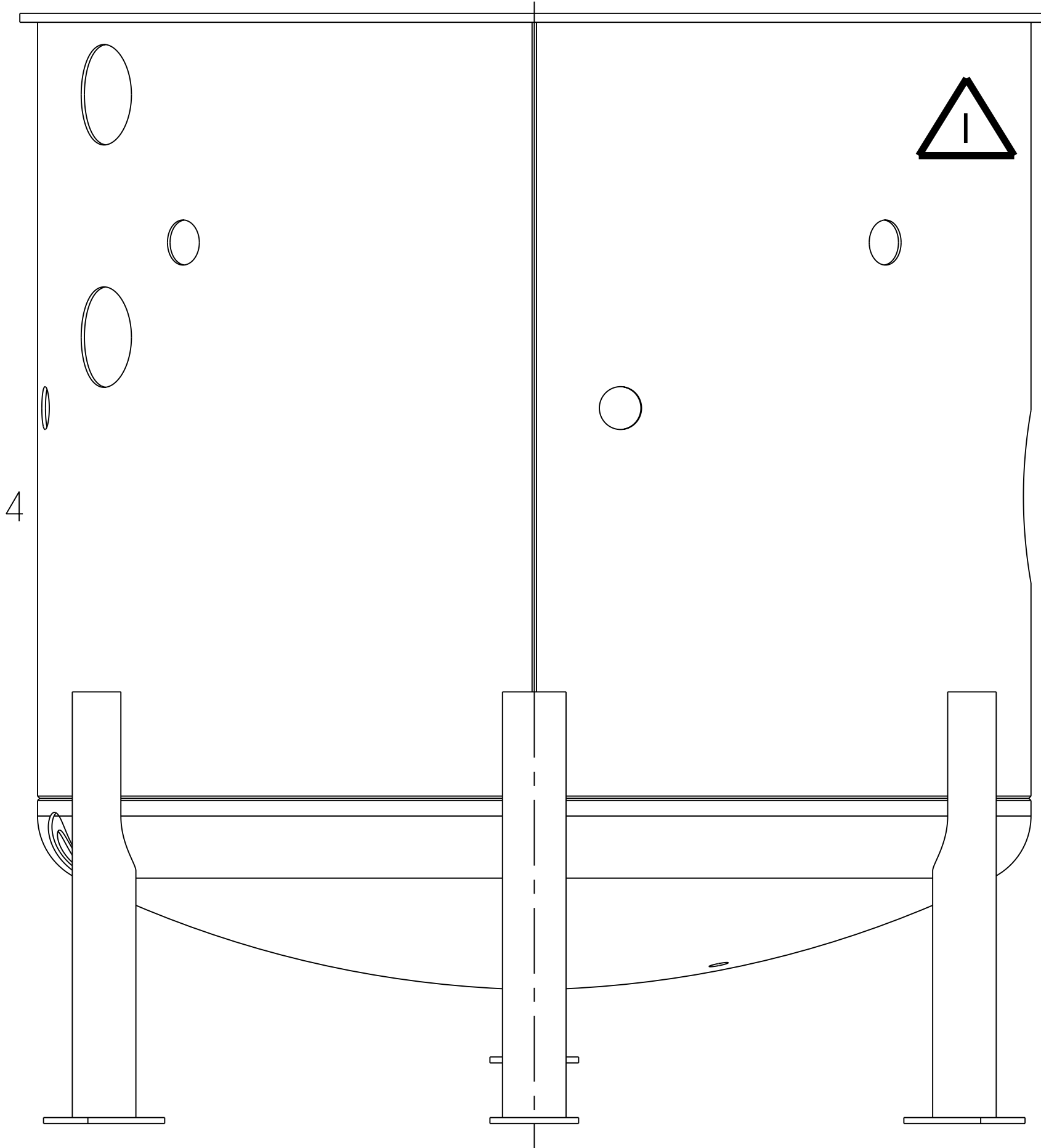
NO.	REVISION	BY	CH	SUP	APPROVED	DATE
1	REVISED PER ECN #4852	JDR	JC	JS	S. RAFTOPOULOS	5/04/04



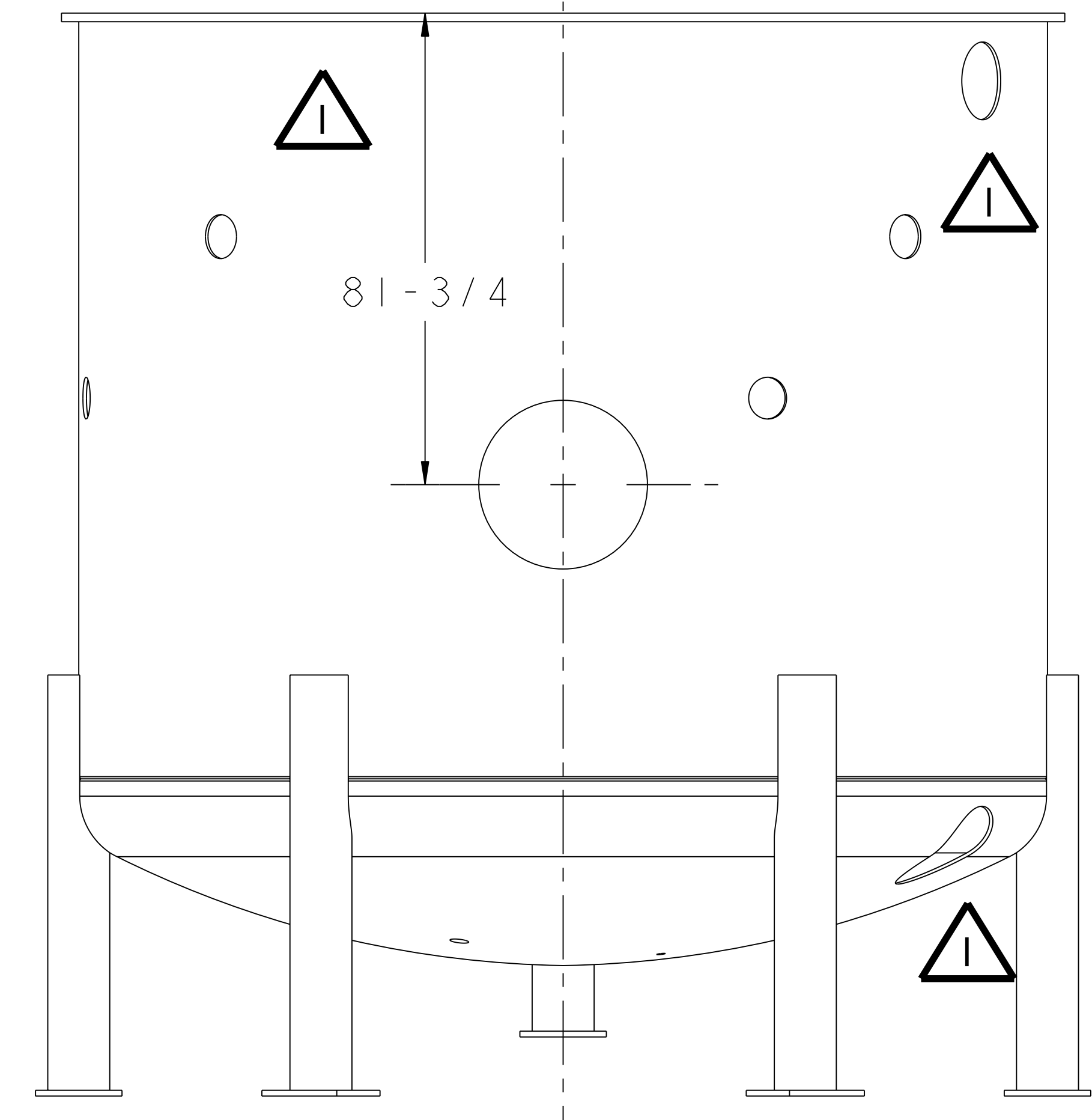
PLAN VIEW  
AS VIEWED FROM ABOVE



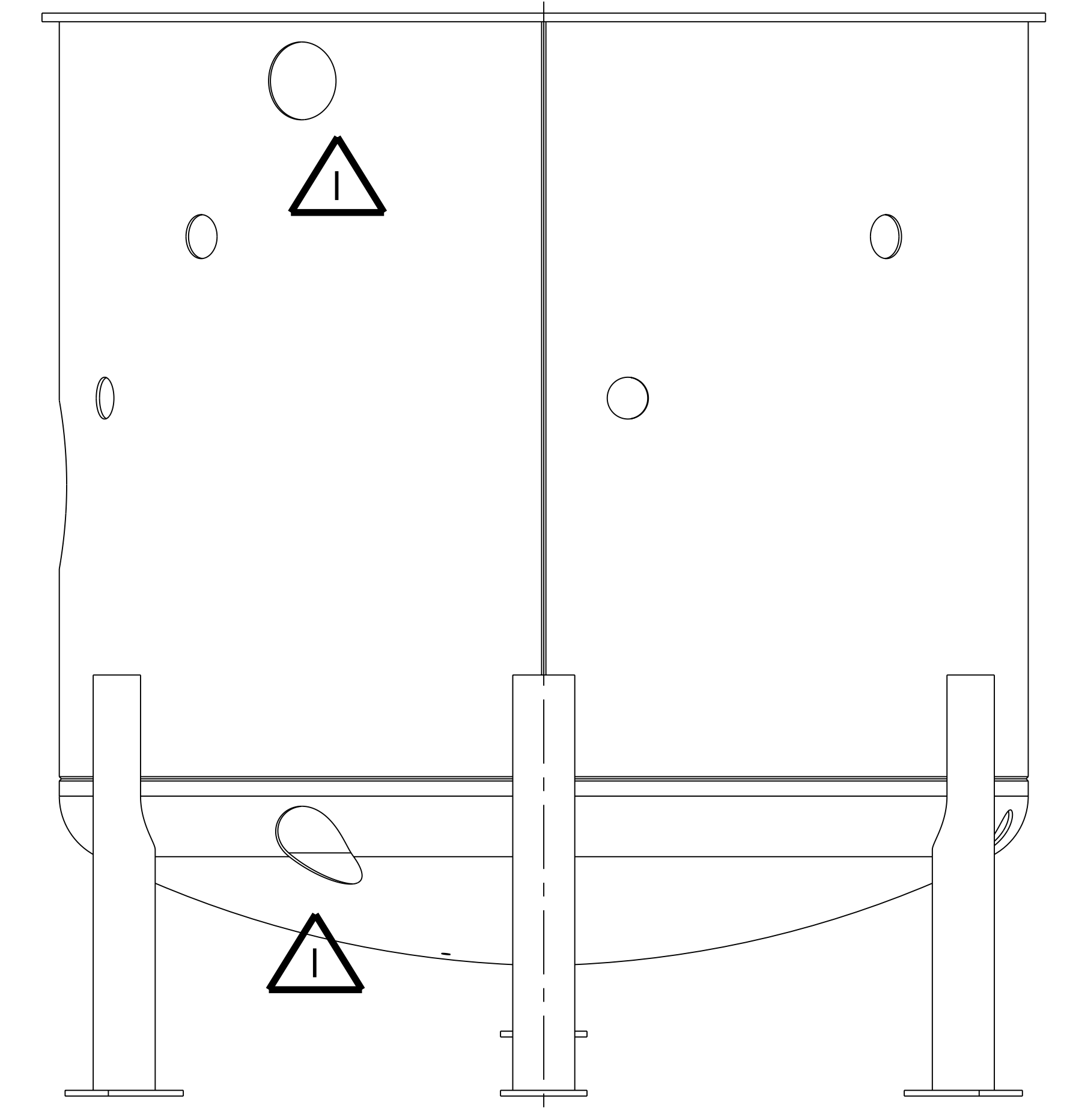
SOUTH ELEVATION



EAST ELEVATION



NORTH ELEVATION



WEST ELEVATION

**RELEASED FOR  
FABRICATION / INSTALLATION**

PPPL Drafting:

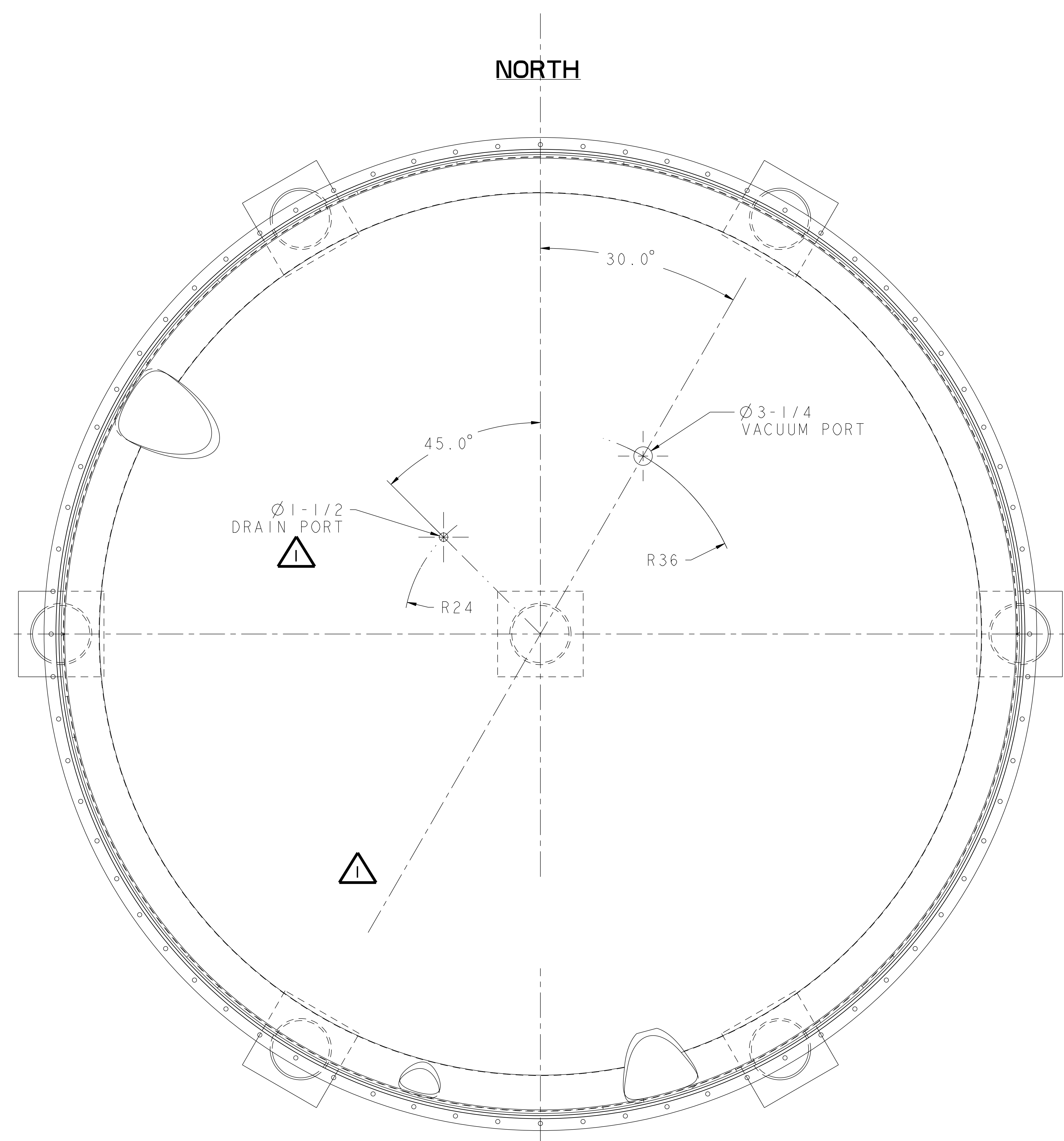
WEIGHT	28135.2 lbs
MODEL NAME	SE144-307
WELDING ENGINEER	

RELEASE LEVEL: As Built  
DWG VERSION NO: 0

PART NO.	DRAWING NO	NOMENCLATURE OR DESCRIPTION	MATERIAL	QTY RECD
1	SE144-315	AUTOClave TANK ASSEMBLY (REV-1)	STN STL	1
PARTS LIST				
COMPUTER GENERATED DRAWING MANUAL CHANGES NOT PERMITTED		CENTRAL FILES: UNLESS OTHERWISE SPECIFIED	PRINCETON PLASMA PHYSICS LABORATORY PRINCETON UNIVERSITY	
DO NOT VERIFY INFORMATION BY SCALING DRAWING		DIMENSIONS ARE IN INCHES MACHINE SURFACES UNLESS OTHERWISE SPECIFIED BREAK SHARP EDGES .005/ .020	NATIONAL COMPACT STELLARATOR EXPERIMENT	
SCALE 0.050 NEXT ASSEMBLY		TOLERANCES NON-CUMULATIVE DECIMAL-INCH FRACTIONS .XX +/- .000 .XXX +/- .005 ANGULAR +/- .05	DSN: J. RUSHINSKI CHK: ENGR: S. RAFTOPOULOS SUPV:	DRAWING NO: <b>SE144-307</b>
			SHEET 1 OF 7	REV 1

NCSX-SE144-307

NO.	REVISION	BY	CH	SUP	APPROVED	DATE
1	REVISED PER ECN #4852	JDR	JC	JS	S. RAFTOPOULOS	5/04/04



**RELEASED FOR  
FABRICATION / INSTALLATION**

PPPL Drafting:

LOWER DOME VERTICAL PENETRATIONS  
LOWER DOME AS VIEWED FROM ABOVE  
(INSIDE THE VESSEL)

WEIGHT  
28135.2 lbs

MODEL NAME  
SE144-307

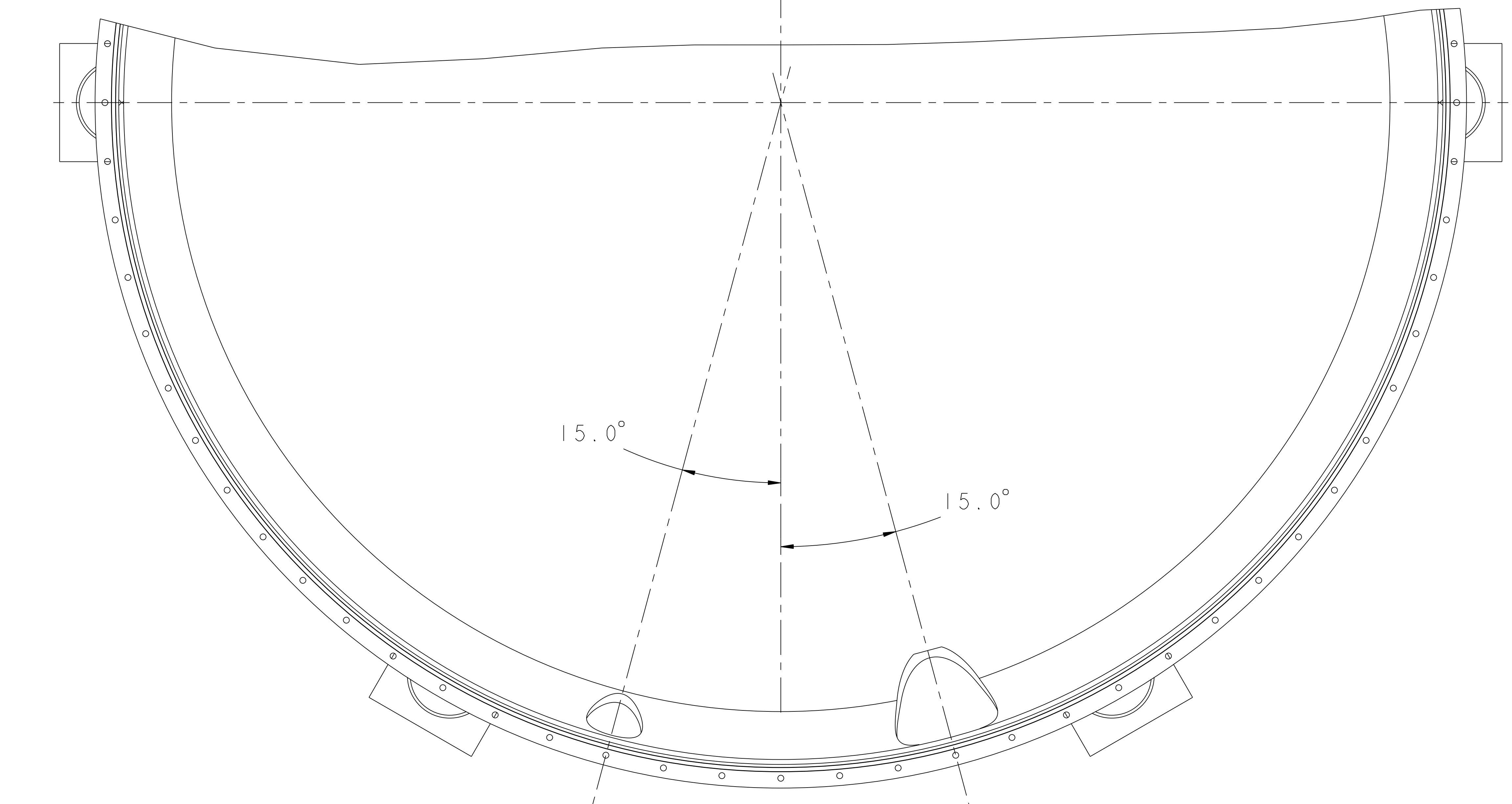
RELEASE LEVEL: As Built  
DWG VERSION NO: 0

PART NO.	DRAWING NO	NOMENCLATURE OR DESCRIPTION	MATERIAL	QTY	RECD
PARTS LIST					
COMPUTER GENERATED DRAWING MANUAL CHANGES NOT PERMITTED		CENTRAL FILES: UNLESS OTHERWISE SPECIFIED	PRINCETON PLASMA PHYSICS LABORATORY PRINCETON UNIVERSITY		
DO NOT VERIFY INFORMATION BY SCALING DRAWING		DIMENSIONS ARE IN INCHES MACHINE SURFACES BREAK SHARP EDGES .005/.020	NATIONAL COMPACT STELLARATOR EXPERIMENT		
SCALE 0.125		TOLERANCES NON-CUMULATIVE	DSN: J. RUSHINSKI	DRAWING NO:	
NEXT ASSEMBLY		DECIMAL-INCH FRACTIONS .X +/- .000 0°-12° +/- .010 .XX +/- .005 12°-120° +/- .010 ANGULAR +/- .0°-15° OVER 120° +/- .125	CHK: J. CHRZANOWSKI	SE144-307	
			ENGR: S. RAFTOPOULOS	SHEET 2 OF 7	
			SUPV: J. SIEGEL	REV 1	

NCSX-SE144-307



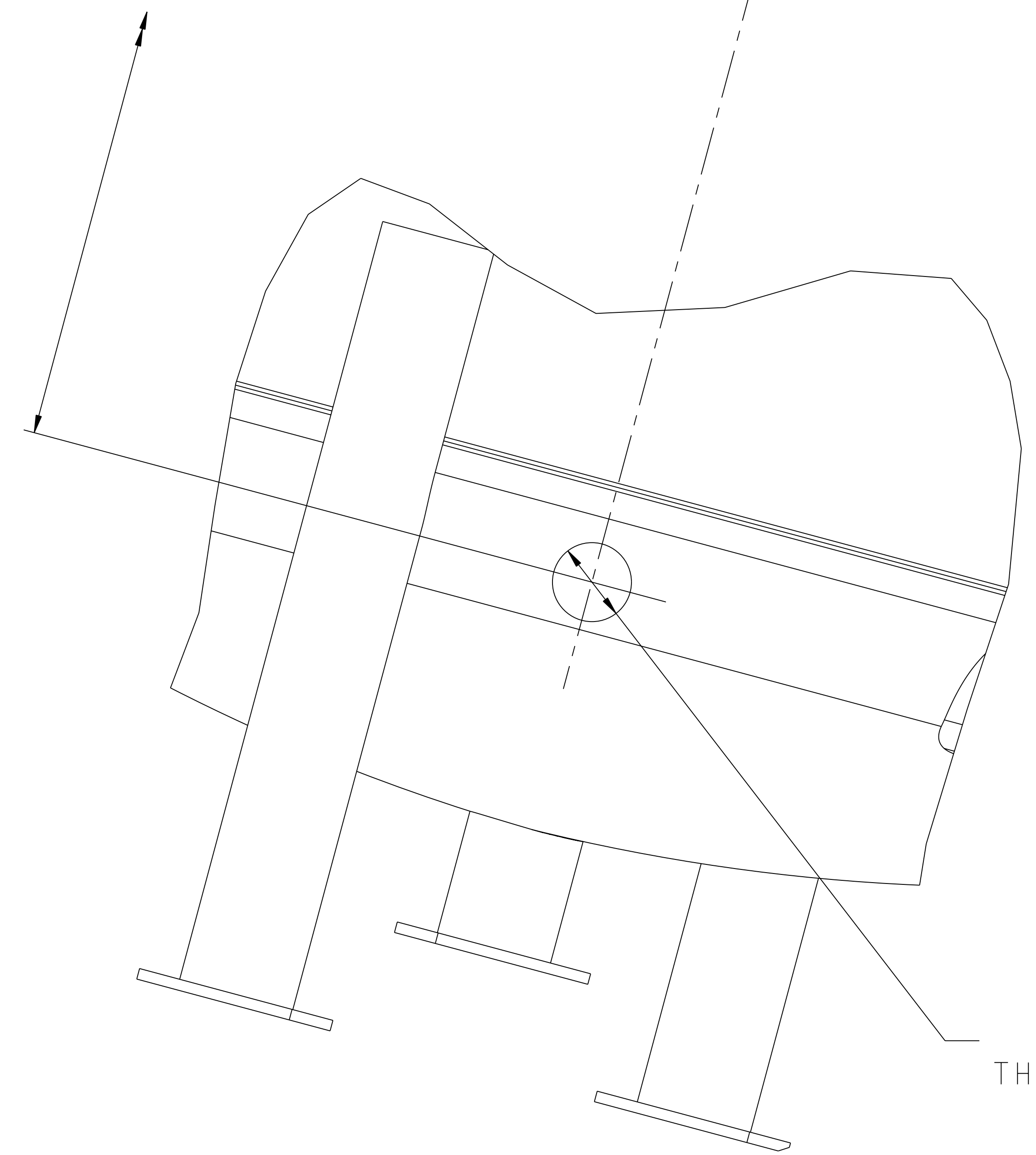
NO.	REVISION	BY	CH	SUP	APPROVED	DATE



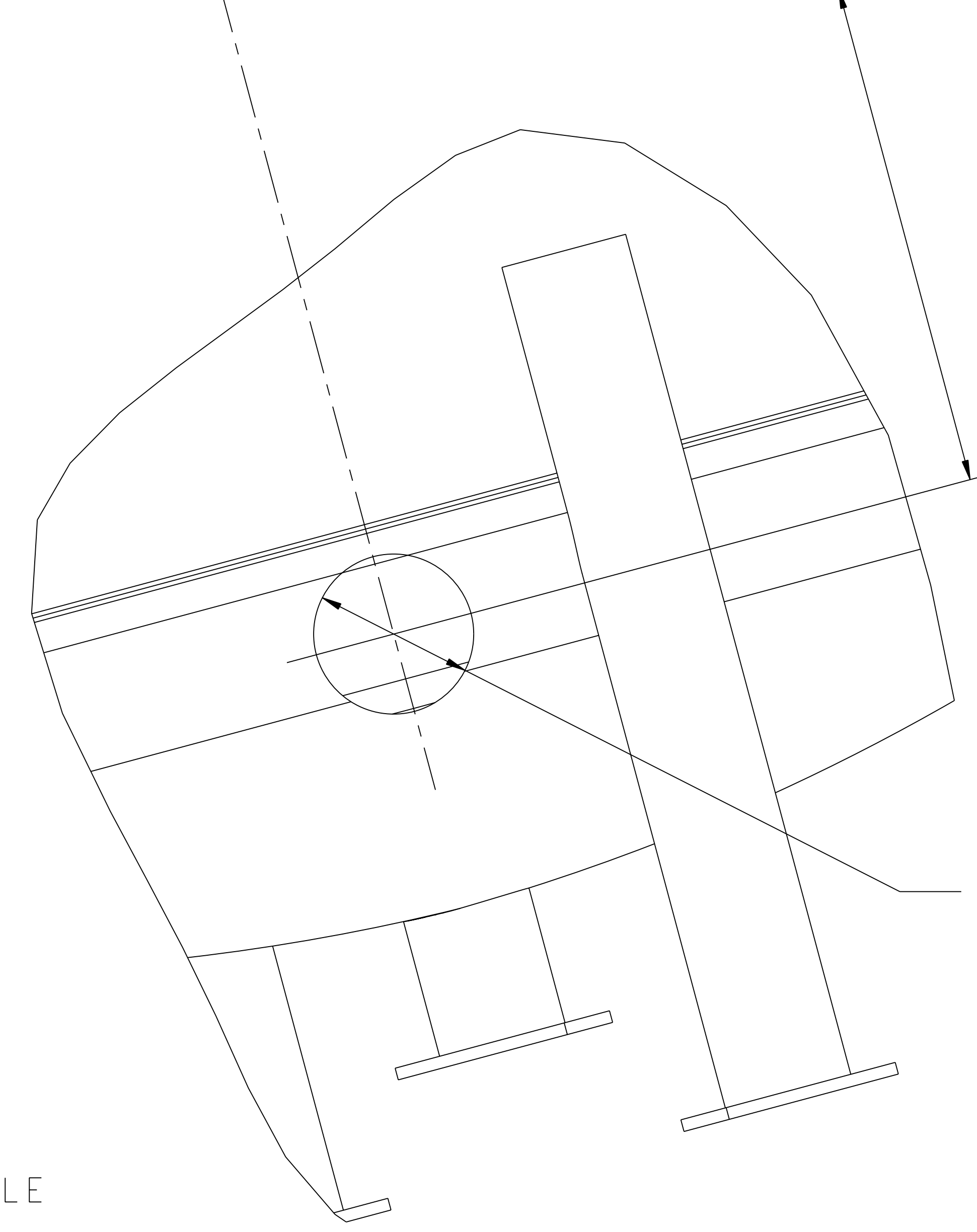
**SOUTH**  
PLAN VIEW  
AS VIEWED FROM ABOVE

141.750  
TO "O" RING  
FLANGE FACE

141-3/4  
TO "O" RING  
FLANGE FACE



Ø 7-1/4  
THERMOCOUPLE  
PORT



Ø 13-1/4  
POWER/LIGHTING  
PORT

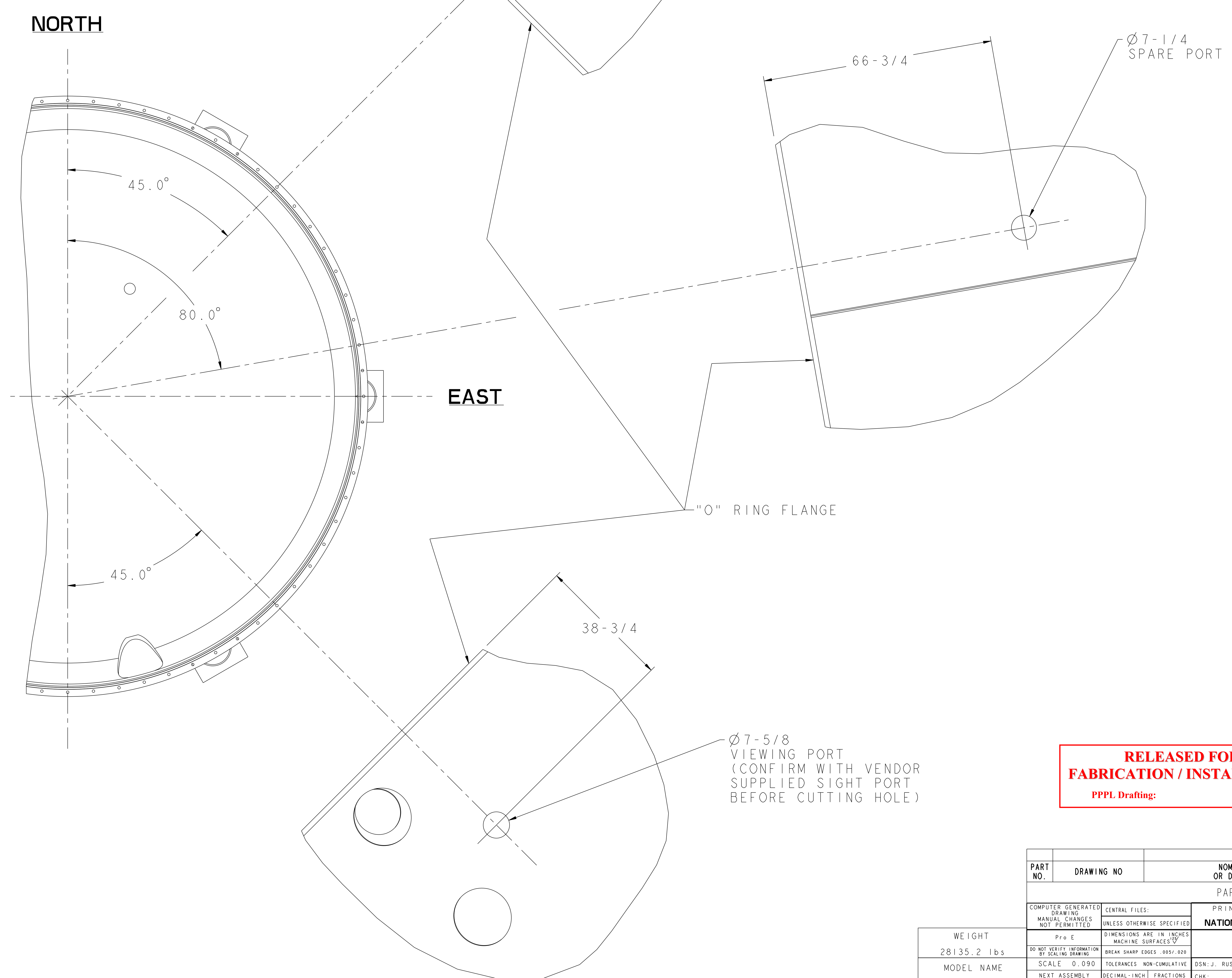
**RELEASED FOR  
FABRICATION / INSTALLATION**  
PPPL Drafting:

PART NO.	DRAWING NO	NOMENCLATURE OR DESCRIPTION	MATERIAL	QTY RECD
PARTS LIST				
COMPUTER GENERATED DRAWING MANUAL CHANGES NOT PERMITTED Pro E		CENTRAL FILES: UNLESS OTHERWISE SPECIFIED	PRINCETON PLASMA PHYSICS LABORATORY PRINCETON UNIVERSITY	
DO NOT VERIFY INFORMATION BY SCALING DRAWING		DIMENSIONS ARE IN INCHES MACHINE SURFACES BREAK SHARP EDGES .005/ .020	<b>NATIONAL COMPACT STELLARATOR EXPERIMENT</b>	
SCALE 0.125		TOLERANCES NON-CUMULATIVE	DSN: J. RUSHINSKI	DRAWING NO:
NEXT ASSEMBLY		DECIMAL-INCH FRACTIONS	CHK: ENGR: S. RAFTOPOULOS	<b>SE144-307</b>
		.XX +/- .000 0°-12° +/- .010 .XX +/- .005 12°-120° +/- .010 ANGULAR +/- .0°-15° OVER 120° +/- .100	SUPV:	SHEET 3 OF 7 REV 0

RELEASE LEVEL: As Built  
DWG VERSION NO: 0

WEIGHT  
28135.2 lbs  
MODEL NAME  
SE144-307  
WELDING  
ENGINEER

NO.	REVISION	BY	CH	SUP	APPROVED	DATE



**RELEASED FOR  
FABRICATION / INSTALLATION**  
PPPL Drafting:

**RELEASE LEVEL: As Built**  
**DWG VERSION NO: 0**

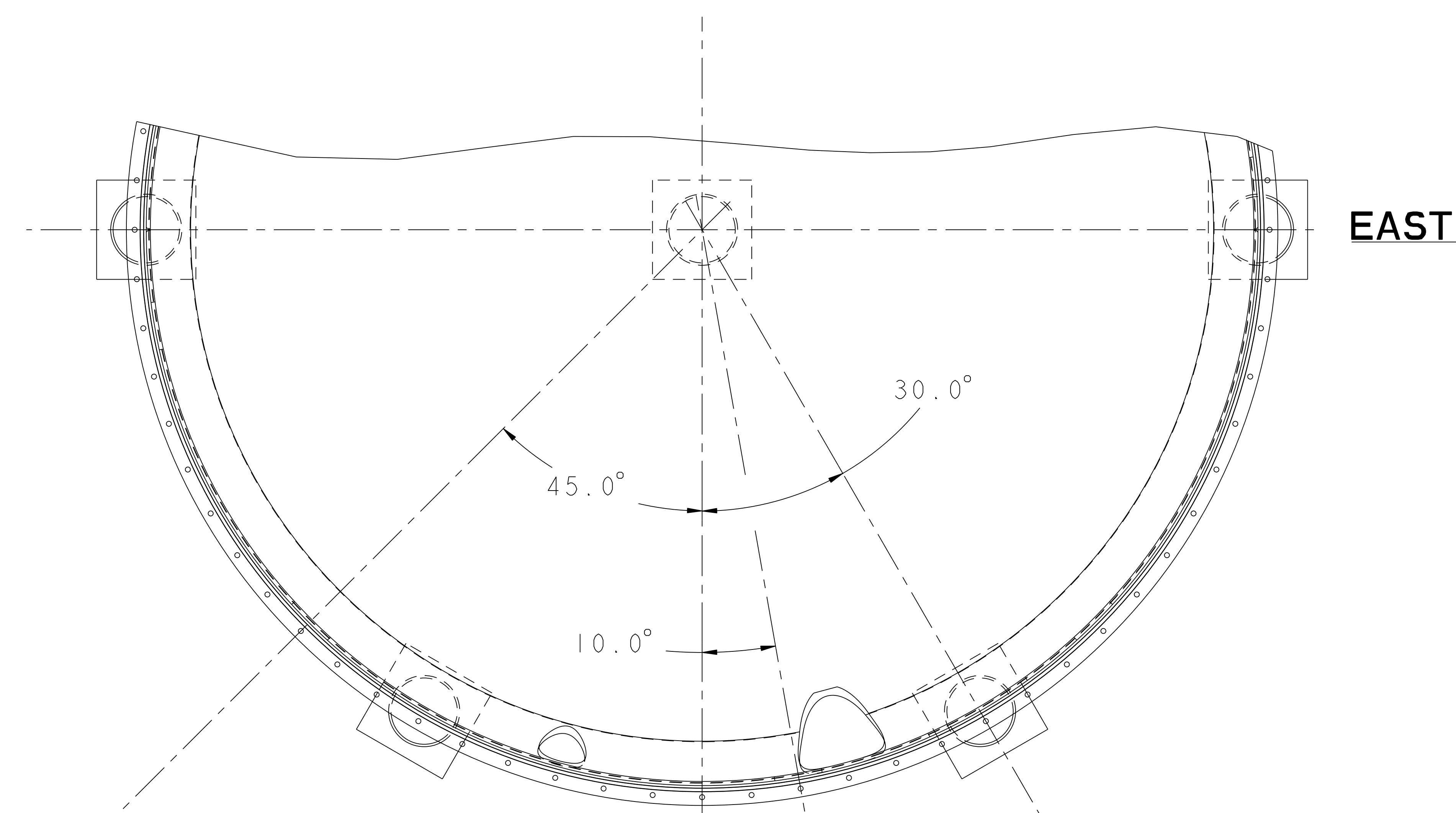
WEIGHT	28135.2 lbs
MODEL NAME	SE144-307
WELDING ENGINEER	

PART NO.	DRAWING NO	NOMENCLATURE OR DESCRIPTION	MATERIAL	QTY RECD
PARTS LIST				
COMPUTER GENERATED DRAWING MANUAL CHANGES NOT PERMITTED		CENTRAL FILES: UNLESS OTHERWISE SPECIFIED	PRINCETON PLASMA PHYSICS LABORATORY PRINCETON UNIVERSITY	
DO NOT VERIFY INFORMATION BY SCALING DRAWING		DIMENSIONS ARE IN INCHES MACHINE SURFACES BREAK SHARP EDGES .005/.020	<b>NATIONAL COMPACT STELLARATOR EXPERIMENT</b>	
SCALE 0.090		TOLERANCES NON-CUMULATIVE	DSN: J. RUSHINSKI	DRAWING NO:
NEXT ASSEMBLY		DECIMAL-INCH FRACTIONS	ENGR: S. RAFTOPOULOS	<b>SE144-307</b>
		ANGULAR ±.0°-15' OVER 120° ±.1°-12'	SUPV:	SHEET 4 OF 7 REV 0

NCSX-SE144-307

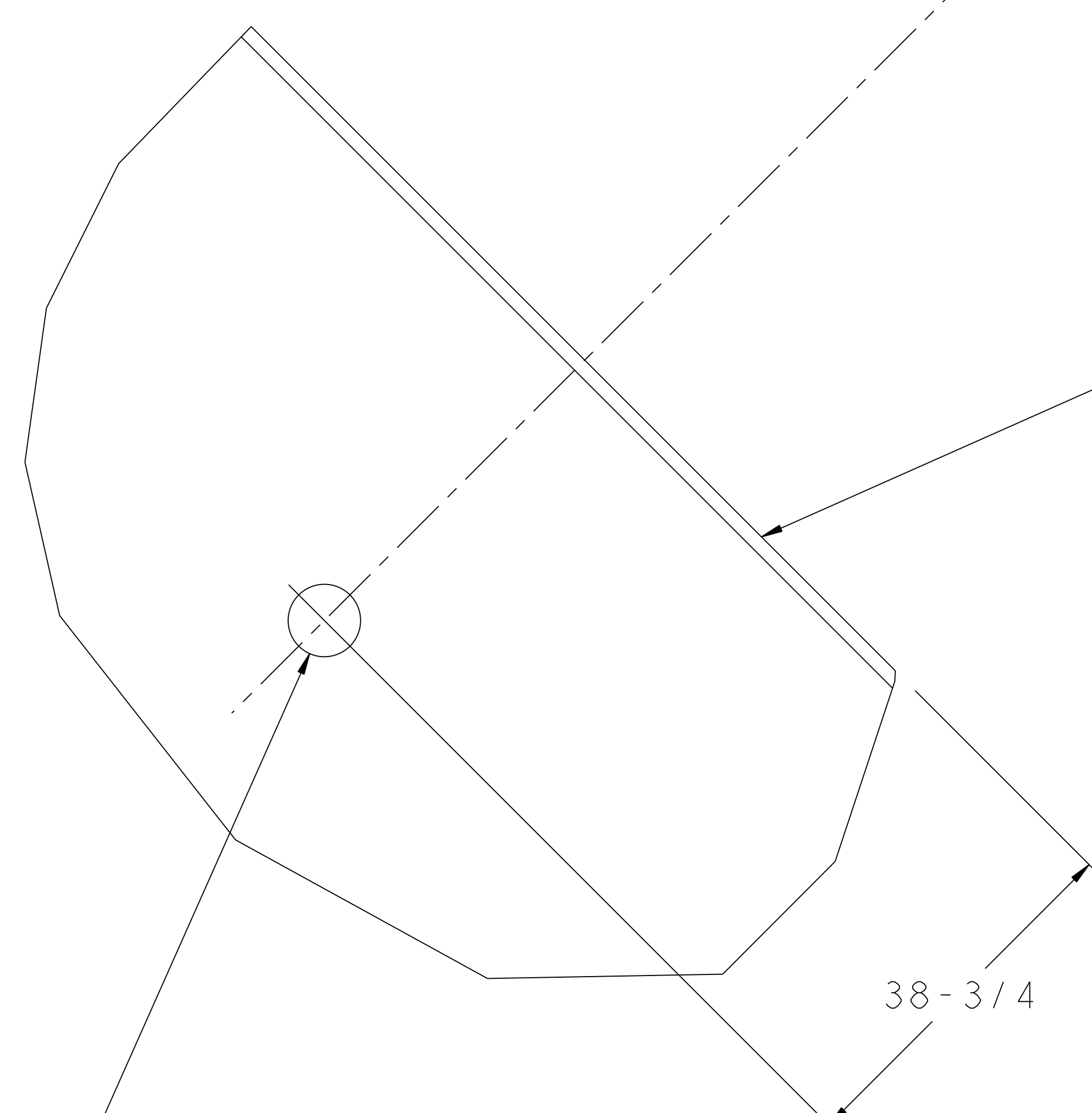


NO.	REVISION	BY	CH	SUP	APPROVED	DATE



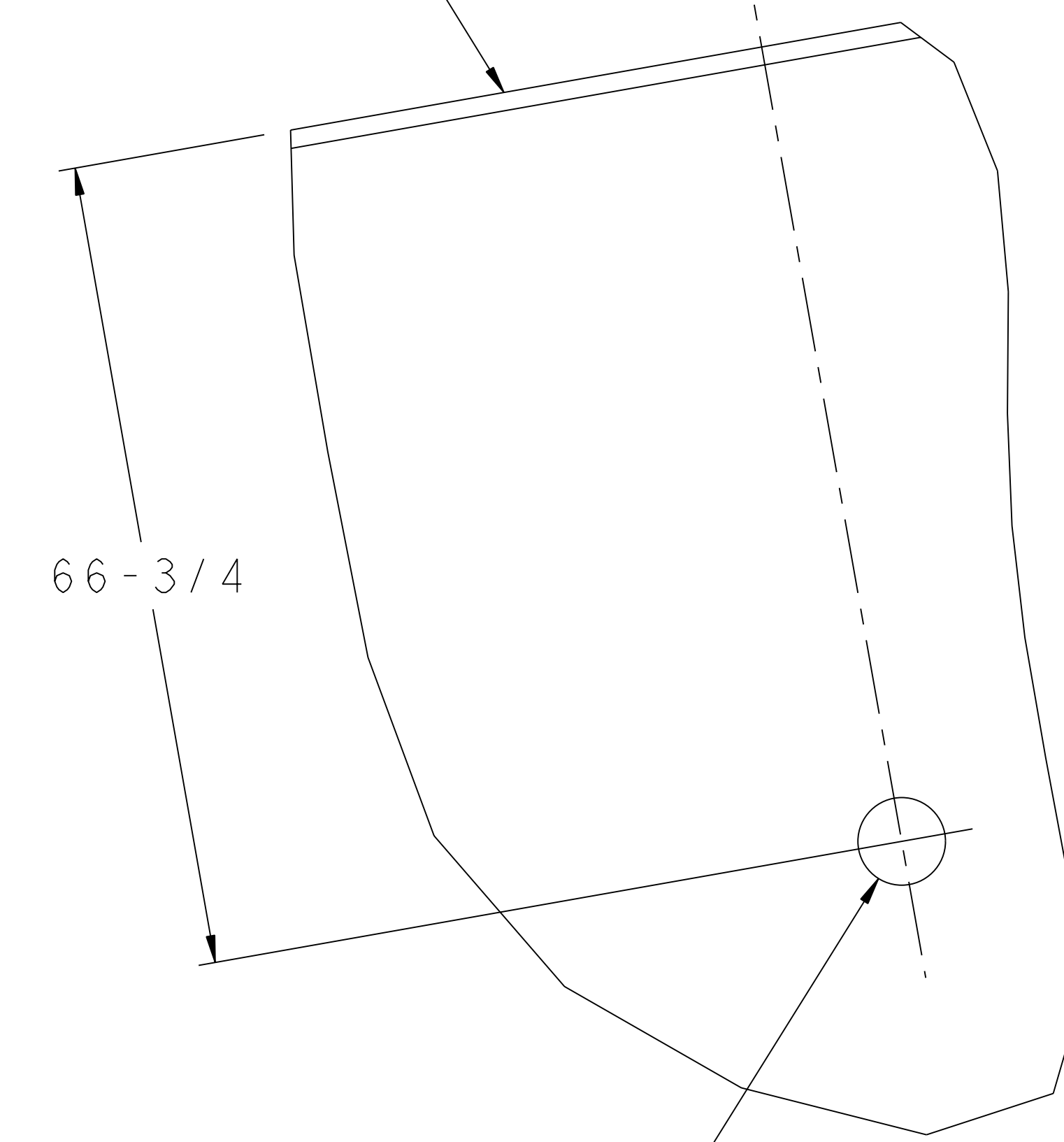
EAST

SOUTH

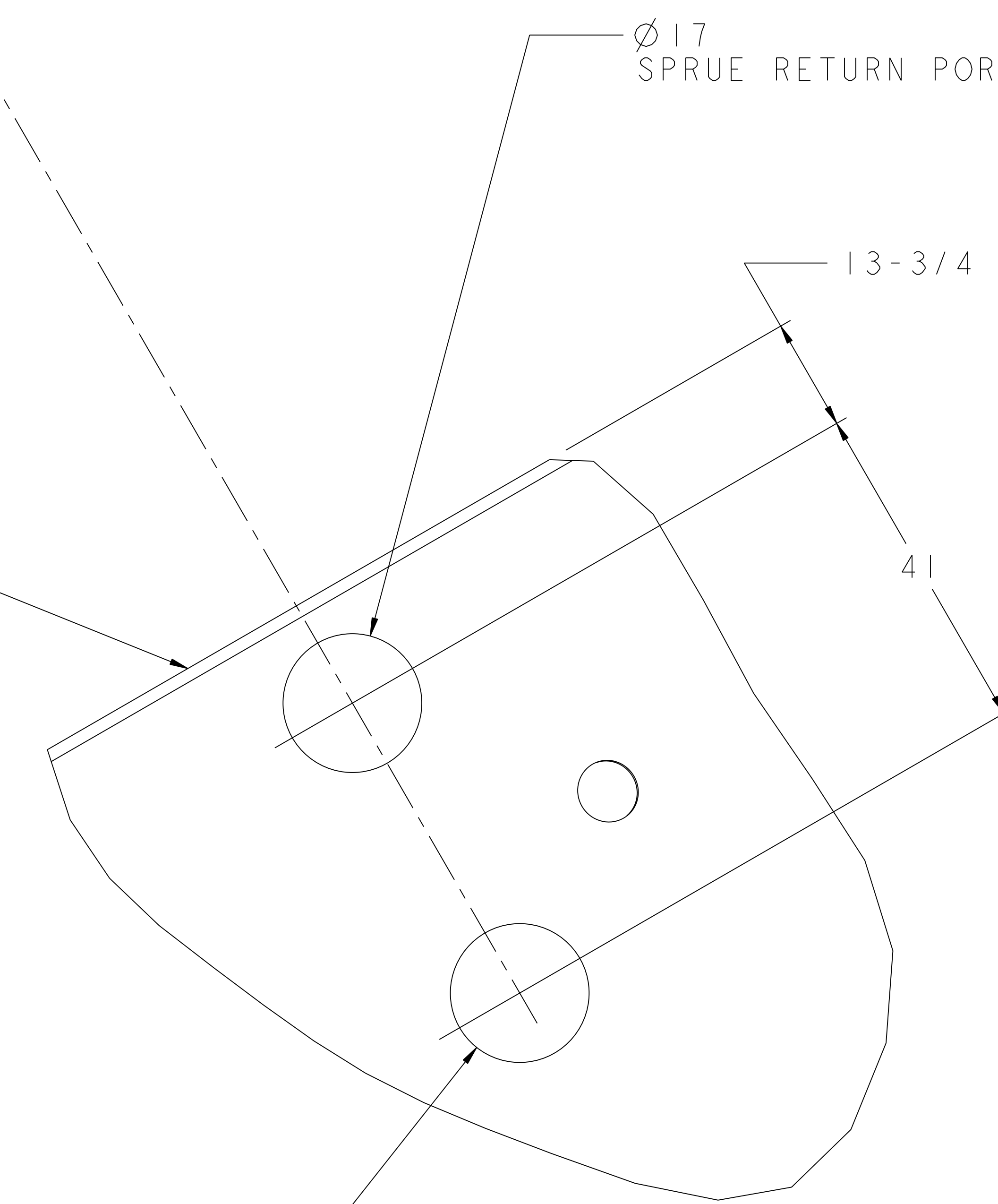


Ø 7-5/8  
VIEWING PORT  
CONFIRM WITH VENDOR  
SUPPLIED SIGHT PORT  
BEFORE CUTTING HOLE

"O" RING FLANGE



Ø 7-1/4  
SPARE PORT



Ø 17  
SPRUE SUPPLY PORT

Ø 17  
SPRUE RETURN PORT

**RELEASED FOR  
FABRICATION / INSTALLATION**  
PPPL Drafting:

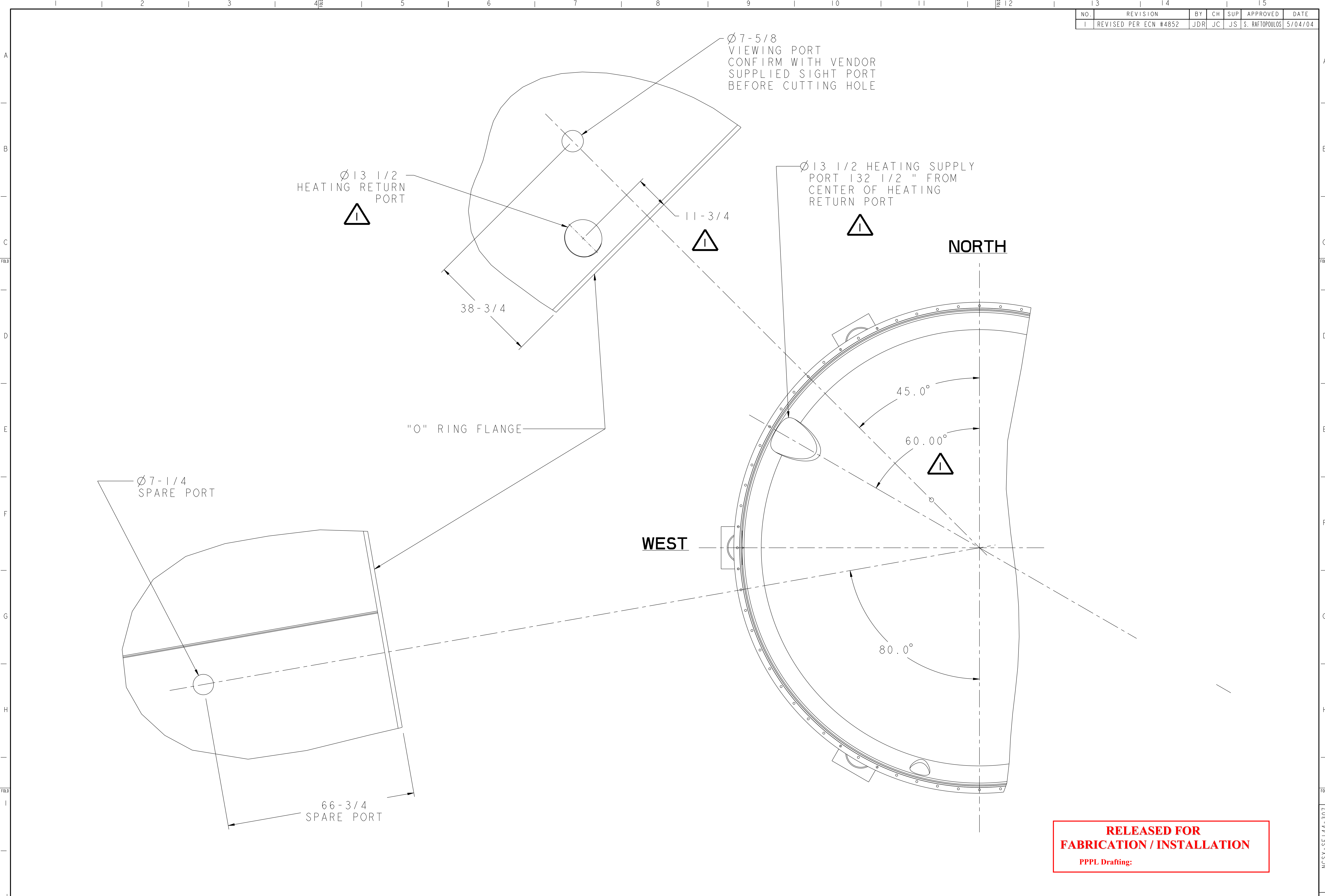
RELEASE LEVEL: As Built  
DWG VERSION NO: 0

WEIGHT  
28135.2 lbs  
MODEL NAME  
SE144-307

PART NO.	DRAWING NO	NOMENCLATURE OR DESCRIPTION	MATERIAL	QTY RECD
PARTS LIST				
COMPUTER GENERATED DRAWING MANUAL CHANGES NOT PERMITTED		CENTRAL FILES: UNLESS OTHERWISE SPECIFIED	PRINCETON PLASMA PHYSICS LABORATORY PRINCETON UNIVERSITY	
DO NOT VERIFY INFORMATION BY SCALING DRAWING		DIMENSIONS ARE IN INCHES MACHINE SURFACES BREAK SHARP EDGES .005/.020	<b>NATIONAL COMPACT STELLARATOR EXPERIMENT</b>	
SCALE 0.090		TOLERANCES NON-CUMULATIVE	DSN: J. RUSHINSKI	DRAWING NO:
NEXT ASSEMBLY		DECIMAL-INCH FRACTIONS	ENGR: S. RAFTOPOULOS	<b>SE144-307</b>
		ANGULAR: ±.05° OVER 120° ±.12°	SUPV:	SHEET 5 OF 7
				REV 0

NCSX-SE144-307

NO.	REVISION	BY	CH	SUP	APPROVED	DATE
1	REVISED PER ECN #4852	JDR	JC	JS	S. RAFTOPOULOS	5/04/04



**RELEASED FOR  
FABRICATION / INSTALLATION**  
PPPL Drafting:

**RELEASE LEVEL: As Built**  
**DWG VERSION NO: 0**

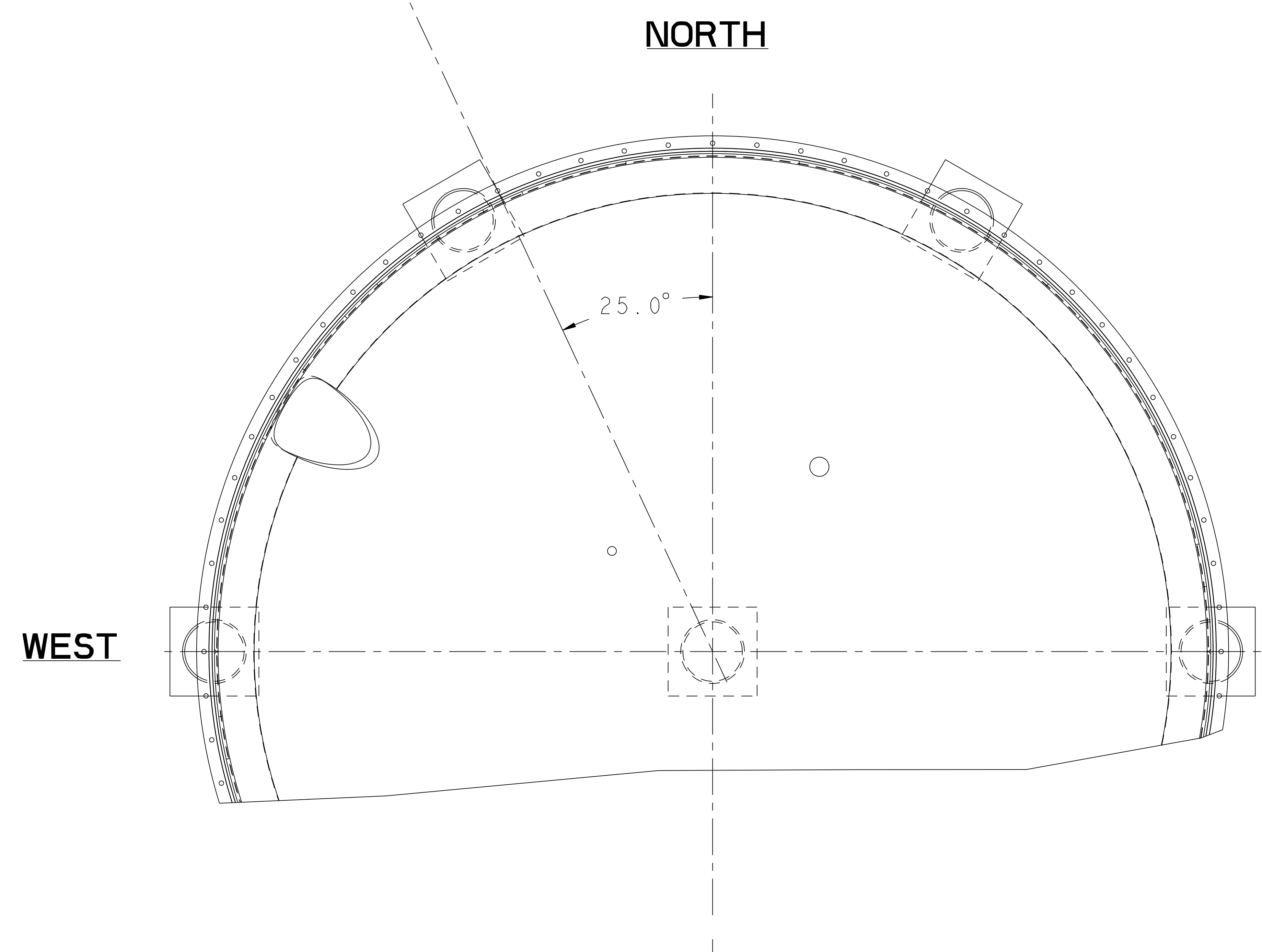
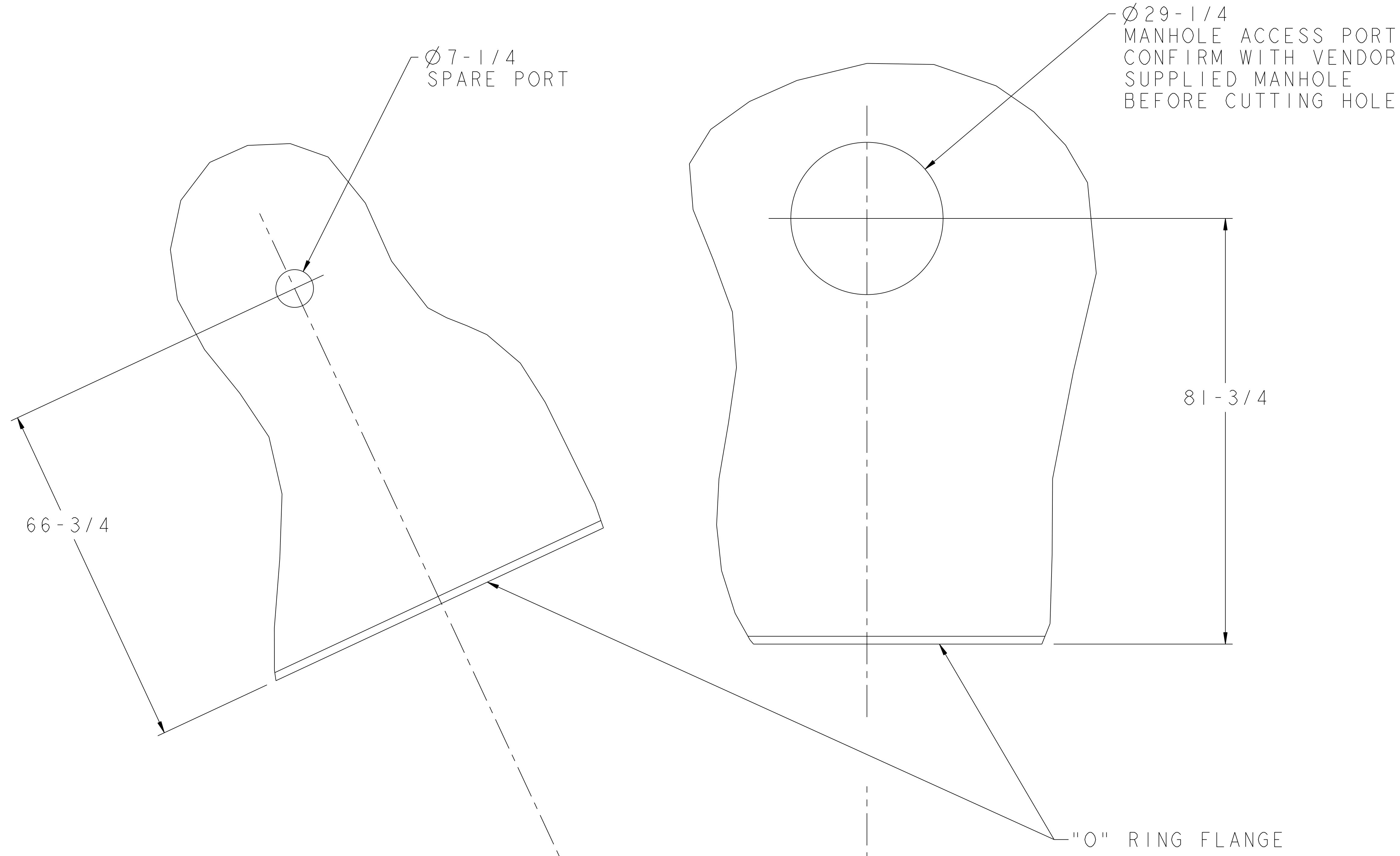
WEIGHT  
28135.2 lbs  
MODEL NAME  
SE144-307  
WELDING  
ENGINEER

PART NO.	DRAWING NO	NOMENCLATURE OR DESCRIPTION	MATERIAL	QTY	RECD
PARTS LIST					
COMPUTER GENERATED DRAWING MANUAL CHANGES NOT PERMITTED		CENTRAL FILES: UNLESS OTHERWISE SPECIFIED	PRINCETON PLASMA PHYSICS LABORATORY PRINCETON UNIVERSITY <b>NATIONAL COMPACT STELLARATOR EXPERIMENT</b>		
DO NOT VERIFY INFORMATION BY SCALING DRAWING		BREAK SHARP EDGES .005/.020	STELLARATOR CORE MODULAR COIL WINDING FACILITY WEST ELEVATION PORT PENETRATIONS		
SCALE 0.090	TOLERANCES NON-CUMULATIVE	DSN: J. RUSHINSKI	DRAWING NO:		
NEXT ASSEMBLY	DECIMAL-INCH FRACTIONS	CHK: J. CHRZANOWSKI	<b>SE144-307</b>		
	.X +/- .000 0"-12" +/- .010	ENGR: S. RAFTOPOULOS	SHEET 6 OF 7		
	.XX +/- .030 12"-32" +/- .100	SUPV: J. SIEGEL	REV		
	.XXX +/- .005 32"-120" +/- .125		REVISIONS		
	ANGULAR +/- .0-15' OVER 120" +/- .125		DATE		

NCSX-SE144-307



NO.	REVISION	BY	CH	SUP	APPROVED	DATE



**RELEASED FOR  
FABRICATION / INSTALLATION**

PPPL Drafting:

WEIGHT	28135.2 lbs
MODEL NAME	SE144-307
WELDING ENGINEER	

**RELEASE LEVEL: As Built**  
**DWG VERSION NO: 0**

PART NO.	DRAWING NO	NOMENCLATURE OR DESCRIPTION	MATERIAL	QTY RECD
PARTS LIST				
COMPUTER GENERATED DRAWING MANUAL CHANGES NOT PERMITTED		CENTRAL FILES: UNLESS OTHERWISE SPECIFIED	PRINCETON PLASMA PHYSICS LABORATORY PRINCETON UNIVERSITY	
DO NOT VERIFY INFORMATION BY SCALING DRAWING		DIMENSIONS ARE IN INCHES MACHINE SURFACES BREAK SHARP EDGES .005/.020	<b>NATIONAL COMPACT STELLARATOR EXPERIMENT</b>	
SCALE 0.090		TOLERANCES NON-CUMULATIVE	DSN: J. RUSHINSKI	DRAWING NO:
NEXT ASSEMBLY		DECIMAL-INCH FRACTIONS	ENGR: S. RAFTOPOULOS	<b>SE144-307</b>
		.XX +/- .000 0°-12° +/- .010 .XX +/- .005 12°-120° +/- .010 ANGULAR +/- .0°-15° OVER 120° +/- .100	SUPV:	SHEET 7 OF 7 REV 0

NCSX-SE144-307