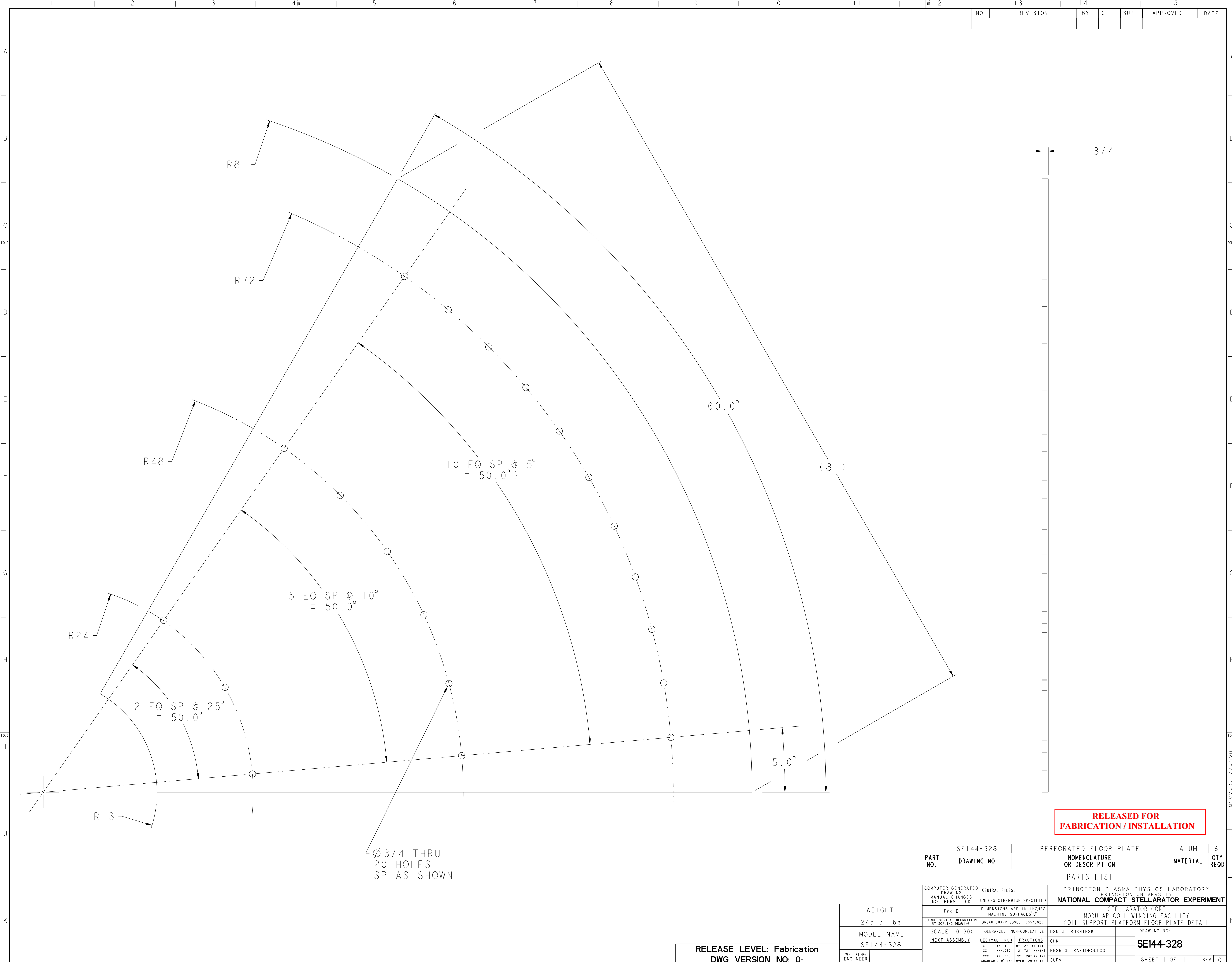


NO.	REVISION	BY	CH	SUP	APPROVED	DATE



RELEASED FOR FABRICATION / INSTALLATION

I	SE144-328	PERFORATED FLOOR PLATE	ALUM	6
PART NO.	DRAWING NO	NOMENCLATURE OR DESCRIPTION	MATERIAL	QTY REOD
PARTS LIST				
COMPUTER GENERATED DRAWING DRAWING CHANGES NOT PERMITTED	CENTRAL FILES: UNLESS OTHERWISE SPECIFIED	PRINCETON PLASMA PHYSICS LABORATORY NATIONAL COMPACT STELLARATOR EXPERIMENT		
DO NOT VERIFY INFORMATION BY SCALING DRAWING	Pro E	DIMENSIONS ARE IN INCHES MACHINE SURFACES BREAK SHARP EDGES .005/.020		
SCALE 0.300	TOLERANCES NON-CUMULATIVE	DSN: J. RUSHINSKI	DRAWING NO:	
NEXT ASSEMBLY	DECIMAL-INCH FRACTIONS	CHK:	SE144-328	
	.XX +/- .030 12" - 12" +/- .170	ENGR: S. RAFTOPOULOS		
	.XXX +/- .005 12" - 120" +/- .174	SUPV:	SHEET 1 OF 1 REV 0	
	ANGULAR +/- .0° - 15° OVER 120° +/- .172			

WEIGHT
245.3 lbs

MODEL NAME
SE144-328

WELDING ENGINEER

RELEASE LEVEL: Fabrication
DWG VERSION NO: 0

NCSX-SE144-328